

MAYOR'S COMMUNITY MESSAGE



The winner of the Library March to a Million 'Fill in the Blanks (footprints)' competition was Pengcheng Pan. His wife Lucy Wei and son Sizhe Pan collected the iPad Mini 4 prize on his behalf.

Outdoor Youth and Family Space

A new Outdoor Youth and Family Recreation Space will be built at Meadowbank Park. The Council decision came after an indepth public consultation that resulted in 394 community members providing feedback. Around eighty percent expressed support for the proposal which will include active, passive and social elements. Concept designs will go on public exhibition in August for the area which will include a children's skate facility, table tennis, a playground, picnic and BBQ areas.

Water Stations

Every year, 160 million drink containers are tossed in the rubbish. Whilst some are recycled, many others end up as litter in waterways, parks, and streets or in landfill.

You can help the environment, your health and hip pocket by "filling up fresh and free" at one of the new water refill stations installed in parks and sportsgrounds around the City of Ryde. The ten new water stations each have a water fountain, bottle refill point and dog bowl. They are located near popular sporting fixtures and walking paths.

NAIDOC Week

Learn about the local indigenous history of the Wallumedegal people and visit sites of Aboriginal significance on a special NAIDOC Week walk through the Field of Mars on Saturday 8 July. Take in the diverse natural surrounds of gum trees, wildlife, birds and urban creeks whilst on the lookout for bush tucker plants. This is also an opportunity to gain an understanding of the co-existence Aboriginal people had with their surroundings. The guided walk will take you through the bush to the shores of the Lane Cove River.

For details go to www.ryde.nsw.gov.au/eventslisting



Yours Sincerely,

Clr Bill Pickering (LtCol Retd)

Mayor - City of Ryde

Phone 9952 8222 or email mayor@ryde.nsw.gov.au

PUBLIC NOTICE BOARD

Garage Sales

Saturday 8 July from 9.00am

- 34 Moira Ave, Denistone West
- 62 Abuklea Rd, Eastwood

To list your garage sale for free, go to www.ryde.nsw.gov.au/garagesales

HAVE YOUR SAY

Planning Proposal – 2-6 Chatham Road, West Ryde and Draft Development Control Plan Part 4.3 West Ryde Town Centre

Planning Proposal 2-6 Chatham Road West Ryde and Draft Development Control Plan Part 4.3 West Ryde Town Centre is on public exhibition up until Friday 4 August 2017 for community comment.

The Planning Proposal seeks to make the following amendments to the *Ryde Local Environmental Plan 2014* and *Part 4.3 West Ryde Town Centre of the Ryde Development Control Plan 2014*:

Draft Amendments to the RLEP 2014

- Increase the maximum height control for the subject site from 15.5 metres to 24 metres
- Increase the FSR control for the subject site from 1.25:1 to 3:1.

Draft Amendments to Part 4.3 West Ryde Town Centre of the RDCP 2014

- Amend setback controls to reflect public domain expansion and active frontage requirements along Chatham Road
- Provide an additional built form control to manage the interface between higher scale mixed use development and lower scale residential uses
- Amend Pedestrian Circulation Framework controls to include the subject site as a Key Pedestrian Area
- Amend public domain controls to insert site-specific design provisions for the linear urban plaza, which includes the 4-metre street frontage setback and existing footpath along Chatham Road
- Update all references to SEPP 65 - Design Quality of Residential Apartment Development and the Apartment Design Guide.

The Department of Planning and Environment issued a Gateway Determination on 15 February 2017, which stipulates the public exhibition of the Planning Proposal for a minimum of 28 days in accordance with Sections 56(2)(c) and 57 of the *Environmental Planning and Assessment Act 1979*. The Department has also issued delegation to Council make the changes to the LEP.

Where and when can I view the Planning Proposal and DCP amendments?

The Planning Proposal, related documents and the Draft DCP are available for viewing up until Friday 4 August 2017:

In person City of Ryde Customer Service Centre
1 Pope Street, Ryde
(Monday to Friday, 8.30am - 5.00pm)

City of Ryde North Ryde Office
Level 1, Building 0, Binary Centre
3 Richardson Place, North Ryde
(Monday to Friday, 8.30am - 4.30pm)

West Ryde Library during branch hours

Online www.ryde.nsw.gov.au/haveyoursay

Making a Submission

Submissions must be in writing and marked 'Planning Proposal – 2-6 Chatham Road, West Ryde' and Draft DCP Part 4.4 West Ryde Town Centre and can be made as follows:

Online www.ryde.nsw.gov.au/haveyoursay

Email cityofryde@ryde.nsw.gov.au

Post General Manager, City of Ryde,
Locked Bag 2069,
North Ryde NSW 1670

All submissions must be received by Council by 4.30pm on Friday 4 August 2017. Please note that Council's policy allows all submissions in relation to draft controls to be made publicly available upon request.

EVENTS AT YOUR LIBRARY

Comic Con-Versation Festival Day

Comic Con-Versation is an exciting initiative, celebrating the best of local comic culture with events, exhibitions and talks across Sydney libraries. Join us for a fun day of family festivities to celebrate Comic Con-Versation at Ryde Library. Activities include a photobooth, badge-making, caricaturist, comic book making, movie screening and more. Dress up as your favourite superhero or comic character and join the celebration!



Comics Plus launch

As part of the Festival Day, we will be launching Comics Plus at 12noon. Learn about this great new resource in the library collection and explore the comic catalogue. Enjoy thousands of digital Graphics Novels and Comics anytime, anywhere on your smart device or PC - all just a click away using the Comics Plus app available to Library members.



When Wednesday 12 July

Time 10.00am - 4.30pm

Where Ryde Library

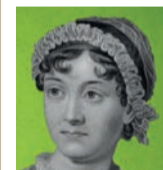
Cost Various costs, refer to each activity

Bookings Essential, call 9952 8352

For the program and cost of activities, visit www.ryde.nsw.gov.au/festivalday

InFocus: 200th Anniversary - Jane Austen

The question, as Jane Austen herself may have put it, is not whether her novels focus on money and marriage but whether they focus on anything else. Come reminisce with Paul Brunton OAM FAHA, Emeritus Curator State Library of New South Wales.



When Tuesday 18 July

Time 1.00 - 3.00pm

Where Ryde Library

Cost Gold coin contribution

Bookings Essential, call 9952 8352 or book online at cityofryde.eventbrite.com.au

InFocus Talk: Understanding Retirement Income Streams

Getting ready for retirement? It's never too early to begin planning your future, working out what you want, looking at the options available to you, and setting some goals. If you plan now, you will have more choices in the future.



When Tuesday 18 July

Time 6.30 - 7.30pm

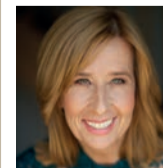
Where Gladesville Library

Cost Gold coin contribution

Bookings Essential, call 9952 8352 or book online at cityofryde.eventbrite.com.au

Authors Platform: Kathryn Heyman

Set in the world of free-diving and inspired by Simon Gittany's conviction for killing his girlfriend, 'Storm and Grace' is a brilliant addition to the territory of domestic noir, tapping deep reservoirs of myth to reveal the secret violence that moves just beneath the surface of everyday.



When Thursday 27 July

Time 6.30 - 7.30pm

Where Ryde Library

Cost Gold coin contribution

Bookings Essential, call 9952 8352 or book online at cityofryde.eventbrite.com.au