

Gladesville

Heritage

Walking

Trail

Contents

1	St Andrews Presbyterian Church	p10
2	Gladesville Shops	p12
	2a. Wilson's Corner	p13
	2b. Commonwealth Bank of Australia	p14
	2c. Gladesville Hotel / Betars' Building	p15
	2d. Sheridan Memorial Clock	p16
	2e. Bayview Hotel (Tavern)	p18
3	Gladesville Public School	p19
	3a. Trim Place	p20
4	Jordan Hall	p21
5	Anglican Christ Church and Rectory	p22
6	War Memorial Gates	p24
7	Tyrell Street Character Area, walking from Ross Street:	p26
	7a. 3 Tyrell Street	p27
	7b. 19 Tyrell Street	p28
	7c. 42 Tyrell Street	p29
	7d. 40 Tyrell Street	p30
	7e. 22 Tyrell Street <i>Wallace Park</i>	p31
8	Gladesville Psychiatric Hospital (<i>Tarban Creek Lunatic Asylum</i>)	p33
9	Great North Road	p34
10	Rockend	p35
11	Banjo Paterson Park	p36
12	Bedlam Point Wharf	p37
13	Stone alignment marker	p38

14	 Wharf Road properties walking from Ashburn Street:	p39
	14a. Ellora	p39
	14b. Avondale	p40
15	 Meditation Park	p41
16	 First Post Office site and Boat House	p42
17	 Gladesville Wharf	p43
18	 Wharf Road properties walking to Ashburn Street:	p44
	18a. Euroma	p44
	18b. Wimberdale and St Elmo	p45
	18c. Woodstone	p46
	18d. The Pines and Speen	p47
19	 Amiens Street	p48
20	 Glades Bay Park and Wulaba Track	p49

Preface

This booklet was produced by the City of Ryde as a guide to discovering and rediscovering our local history. It is the second production of its kind and covers heritage sites west and south of Victoria Road in the village of Gladesville. The sites can be visited in any order and a complete loop is just over 5km, though is presented in four separate short walks. Access is on formed paths but as there are a number of steps and steep gradients, not all of the route is suitable for a wheelchair or pram. Buses run frequently along Victoria Road, free car parking is available in Jordan Street (2 hours) and at Banjo Paterson Park (unlimited). Public toilets are available on the corner of Jordan Street and Victoria Road, in the Gladesville Shopping Village, and in Banjo Paterson Park.

Some of the places along the walking trail are not listed items of heritage significance, however, have been included for their historical, architectural, social or aesthetic importance to the locality. A few sites are within the Hunters Hill Municipal Council area.

When viewing sites, please respect private property. Be aware that churches are not always open, and that entry to school grounds is prohibited other than to authorised visitors.

Much of the information in this booklet has been summarized and updated from Council's database of heritage listed sites available through the Office of Environment and Heritage:

<http://www.environment.nsw.gov.au/heritageapp/heritagesearch.aspx>

For additional information see the following:

- Blaxell G. 2009. *The River: Sydney Cove to Parramatta*. Halstead Press.
- Geeves P. 1970. *A Place of Pioneers. The centenary history of the Municipality of Ryde*. Ryde Municipal Council.
- Levy M.C.I. 1947. *Wallumetta. A history of Ryde and its districts 1792-1945*. W.E. Smith, Sydney.
- Martin M. 1998. *A pictorial History of Ryde*. Kingsclear Books.
- McAndrew A. 2004. *Glimpses of Gladesville Past and Present*.
- Paul Davies P/L 2005. *The Gladesville shops heritage assessment*.
- Ryde District Historical Society 2015. *Ryde goes to War 1914-1918*. RDHS.
- Shaw K. (Ed.) 2002. *Historic Ryde. A guide to some significant heritage sites in the City of Ryde*. Ryde District Historical Society.
- Smith K.V. 2005. *Wallumedegal: An Aboriginal History of Ryde*. Sydney, City of Ryde Council.

About Gladesville

At the time of European settlement, this area was occupied by the Wallumudegal who had lived along the river for five or six thousand years since sea level reached its present height after the last Ice Age.

Prior to that Aboriginal people were here but we have no local archaeological trace of them.

Shortly after the First Fleet arrived a smallpox epidemic ravaged all Aboriginal groups and consequently we know very little about their numbers and lifestyle. The best known local Aboriginal person was Woollarawarre Bennelong, who was a Wangal man from the south side of the river. Bennelong later became the leader of a composite group known as the Kissing Point Tribe in the first decade of the 19th century.

By 1824, the visiting French surgeon and pharmacist Rene Primavere Lesson wrote: *'the tribes today are reduced to fragments scattered all around Port Jackson, on the land where their ancestors lived and which they do not wish to leave.'* Traces of these original inhabitants may be seen in a few middens, rock shelters and stone engravings.

European settlement began with land grants in 1792 on the 'Eastern Farms' and from 1795 in the Gladesville and Tennyson Point areas. A noted convict artist John Doody, received a grant in 1795 as a reward for his paintings of Norfolk Island plants but Doody never lived there and it was reallocated to Ann Benson in 1796. Another convict settler, John Glade used that land as an extension of his 1802 grant and purchased it in 1817.

The district slowly became a rural farming and dairy area supplying the Sydney market, but it remained isolated, with the only access via the Parramatta River.

Isolation was reduced when the Great North Road was opened in 1832. Planned by Major Thomas Mitchell in 1825 it first carried traffic when the punt began to cross the river between Abbotsford and Bedlam Point. The road (now

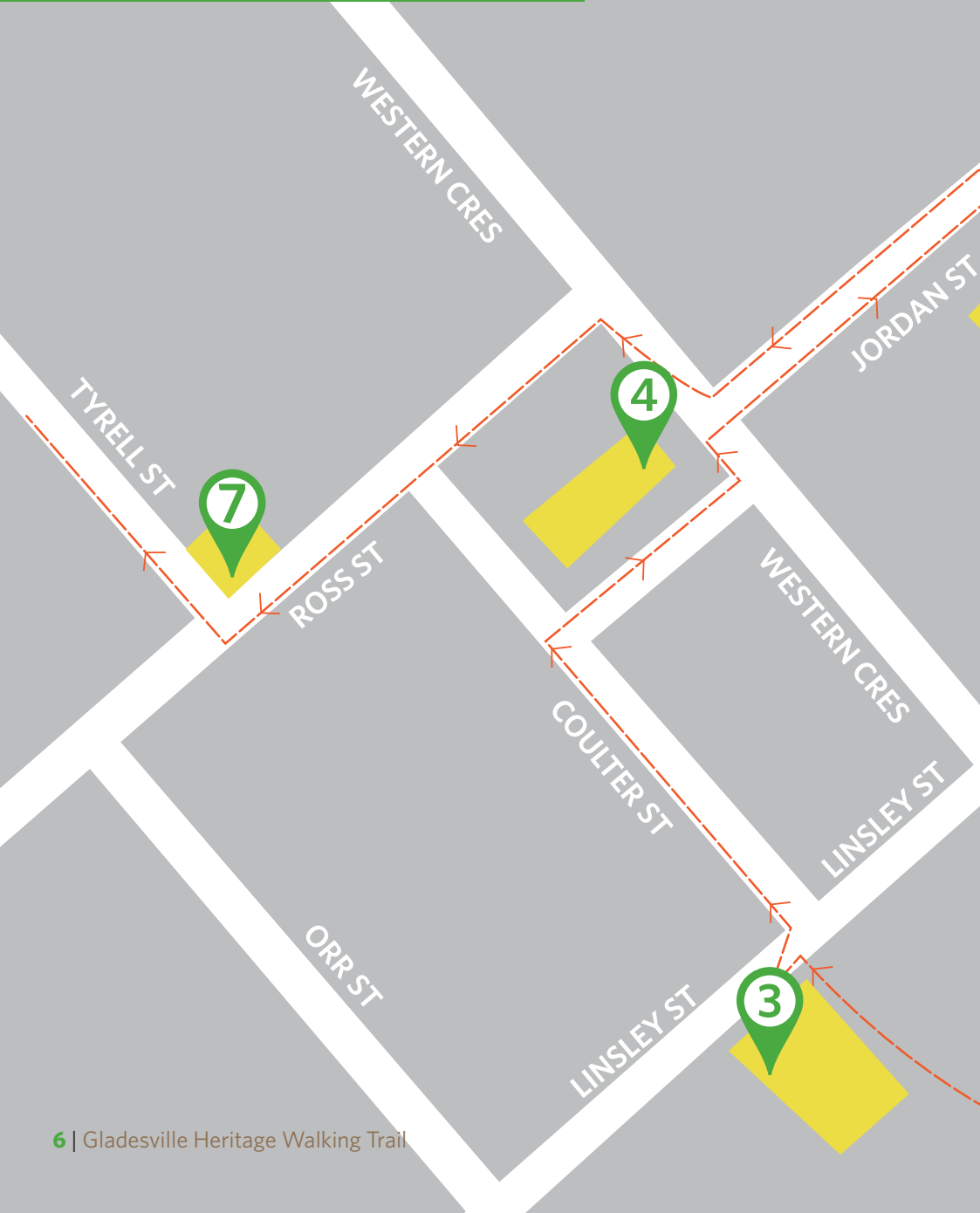
Victoria Road) ran along the ridge to Ryde and eventually to the Hunter Valley and Newcastle.

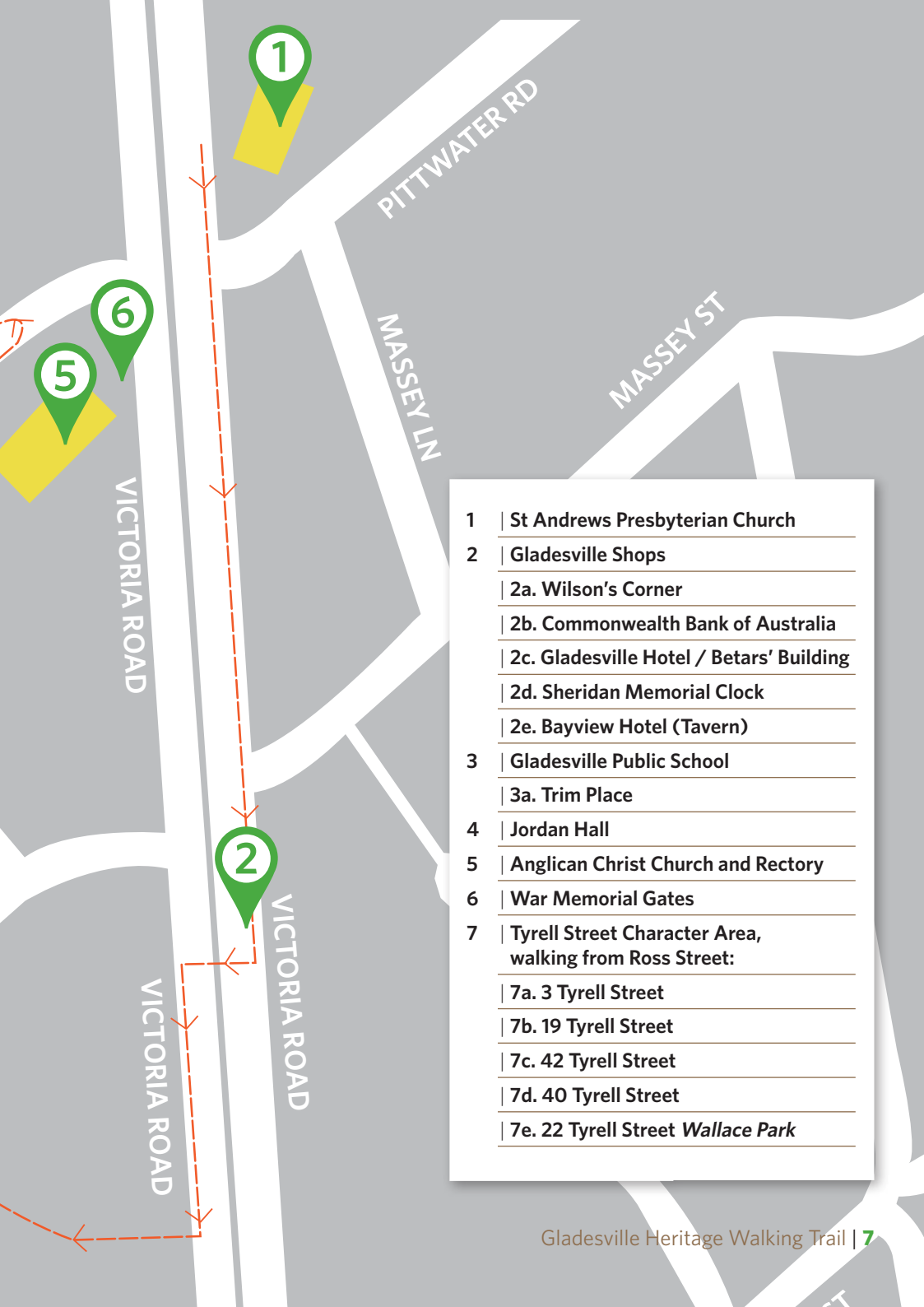
The first attempt at urban subdivision was made in 1841 when Thomas Stubbs tried to sell *Battersea* in small lots west of the Great North Road to the edge of Doody's grant. The 1840s were a bad time for land speculation as the colony was almost bankrupt and the subdivision failed. John Glade died in 1848 and his expanded property along with *Battersea* was obtained by a Sydney solicitor and developer William Billyard, who offered it for sale from November 1855, as the Glades Ville Estate. This development included a wharf to enable better access and to overcome the difficult task for passengers of alighting in midstream from the regular Parramatta River steamers onto the Bedlam Punt to be conveyed to shore. Sales continued slowly over thirty years but it was this subdivision which defined the present roads and many property boundaries. Subdivision of other large estates continued into the 1920s.

The first commercial building in Gladesville was the Flagstaff Inn, licensed to John Worthington in 1856. Several other wharves and ferry services were established but from 1861 residents were petitioning for improved road access to Sydney which was finally obtained after 1874 when land was released from the Field of Mars Common and funds became available to construct bridges at Gladesville (1881, replaced by the present concrete-arch bridge in 1964) and Iron Cove (1882). Horse-drawn bus services to the city operated until replaced by trams from 1910 to 1949, when buses again took over.

The small settlements at Bedlam Point (Tarban Creek) and Flagstaff Hill became the village of Gladesville by the 1870s. The post office moved from Wharf Road to the crest of the hill in 1867. Sydney's first Protestant Hall was built in the same year, the Anglican Church opened in 1877, and Gladesville Public School began classes in 1879.

Map and Key





- 1 | **St Andrews Presbyterian Church**

- 2 | **Gladesville Shops**
 - 2a. **Wilson's Corner**
 - 2b. **Commonwealth Bank of Australia**
 - 2c. **Gladesville Hotel / Betars' Building**
 - 2d. **Sheridan Memorial Clock**
 - 2e. **Bayview Hotel (Tavern)**

- 3 | **Gladesville Public School**
 - 3a. **Trim Place**

- 4 | **Jordan Hall**

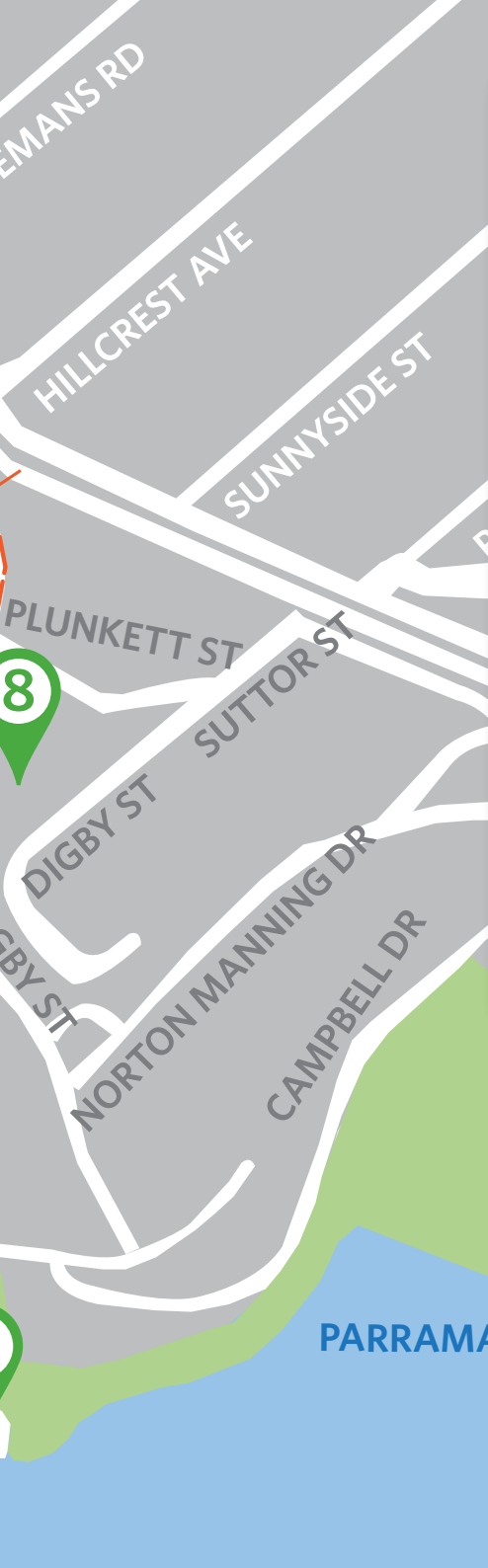
- 5 | **Anglican Christ Church and Rectory**

- 6 | **War Memorial Gates**

- 7 | **Tyrell Street Character Area, walking from Ross Street:**
 - 7a. **3 Tyrell Street**
 - 7b. **19 Tyrell Street**
 - 7c. **42 Tyrell Street**
 - 7d. **40 Tyrell Street**
 - 7e. **22 Tyrell Street *Wallace Park***

Map and Key





- 8 | **Gladesville Psychiatric Hospital
(Tarban Creek Lunatic Asylum)**

- 9 | **Great North Road**

- 10 | **Rockend**

- 11 | **Banjo Paterson Park**

- 12 | **Bedlam Point Wharf**

- 13 | **Stone alignment marker**

- 14 | **Wharf Road properties walking from
Ashburn Street:**
 - 14a. Ellora

 - 14b. Avondale

- 15 | **Meditation Park**

- 16 | **First Post Office site and Boat House**

- 17 | **Gladesville Wharf**

- 18 | **Wharf Road properties walking to
Ashburn Street:**
 - 18a. Euroma

 - 18b. Wimberdale and St Elmo

 - 18c. Woodstone

 - 18d. The Pines and Speen

- 19 | **Amiens Street**

- 20 | **Glades Bay Park and Wulaba Track**

PARRAMATTA RIVER

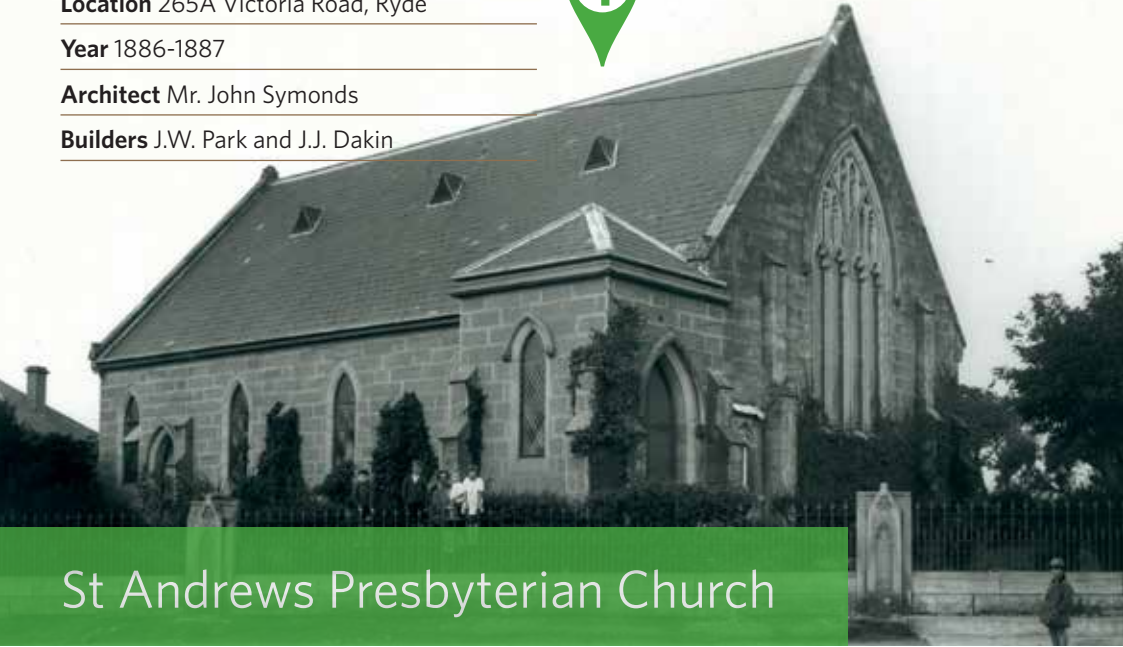
Style Late Sandstone Victorian Rustic Gothic

Location 265A Victoria Road, Ryde

Year 1886-1887

Architect Mr. John Symonds

Builders J.W. Park and J.J. Dakin



View of St Andrews Presbyterian Church c1930 prior to the widening of Victoria Road and the removal of the front entrance porch.

St Andrews Presbyterian Church was the first Presbyterian Church in the district. Planning began in 1886 and until 1887 Presbyterian meetings were conducted in *Euroma*, a cottage on Wharf Road (Item 18a). The first sermon was delivered in 1887 in the shared Protestant Hall on the Christ Church site. In 1887 part of Harriet Miller's *Sunnyside* property was donated for the Church. *Sunnyside* was later purchased by the Church and used as the manse until the 1930s.

The building cost £2,768 and seated 270 people. It officially opened in July 1889. Throughout the years, various works were undertaken to the Church such as relocation of the porch and stone wall when Victoria Road was widened after 1931. A major addition was made in 1917 when James Wallace Park and his wife Catherine donated a classroom on the northern side of the

10 | Gladesville Heritage Walking Trail

Church in memory of their son Wallace, killed at Lone Pine on Gallipoli (Item 7e). An honour roll of WWI Church members, including the Elliot brothers (Item 7b) may be seen on the south facade. The War Memorial Hall in Pittwater Road was opened in February 1955.



St Andrews Presbyterian Church - WWI Honour Roll on the southern façade.



St Andrews Presbyterian Church.



The foundation stone which was laid in 1888. William Wright was a merchant and Island trader who opened a shipping agency in Auckland in 1843, built an impressive house on the Drummoyne Estate, and was a benefactor of several churches, including Balmain, Hunters Hill and Gladesville.





View of Victoria Road and Gladesville shops c1930.

Victoria Road forms part of the boundary between Ryde and Hunters Hill Councils. Buildings in the street are typical of retail development from the late 19th century to the present day but cafes, restaurants, lawyers, and health care services have replaced butchers, green grocers, pharmacists, mercers and hardware stores. Today commercial strip development is challenged by supermarkets and car parking.

Many of the earlier buildings were demolished and redeveloped in the 1930s as part of the widening of Victoria Road, once known as the Great North Road.

Location 263 Victoria Road Gladesville

Style Federation Free Style

Year c1900

Wilson's Corner



Wilson's Corner building.

One of the oldest buildings is at the corner of Pittwater and Victoria Roads and is easily recognised as a former butcher shop by the bullock head which features prominently on the parapet.

The building is defined by its red brick walls with horizontal rendered bands.

This shop was first operated by Bob Woolley then taken over by Jack Wilson in 1924. Jack was followed by his son Ray and grandson Trevor until the retail business closed in 1988. The family also had a ham and bacon factory in Boronia Park that continued for another four years.

Commonwealth Bank of Australia



Location 219 Victoria Road, Gladesville

Style Inter War Art Deco

Year 1920, 1937

Architects Ross and Rowe (1920)



The Commonwealth Bank of Australia.

This is the only true art deco building in Gladesville and is similar to many other Commonwealth Bank buildings of the same age.

The bank was formerly a branch of the Government Savings Bank built by Alexander Simpson and Sons under the architects Ross and Rowe in 1920. The Government Savings Bank merged with the Commonwealth Bank in 1931 and in 1937 the building was refurbished with a new façade constructed by Hogden Brothers.

An awning and a new street face was added in 1992 so today only the upper level reflects the art deco detailing. It is best viewed from Trim Place (Item 3a).



The Commonwealth Bank of Australia in 1937.



Gladesville Hotel / Betars' Building

Location Rear of 177-181 Victoria Road

Style Inter War Federation Free Style

Year 1866

Architects Unknown

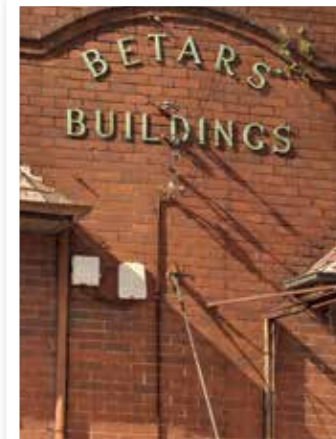
The former hotel is the earliest of the extant hotels in the Hunters Hill/Ryde area. Gladesville Hotel is located on the corner of Junction Street and Victoria Road. The building was constructed in stages between 1856 and the 1870s and originally had a frontage to Junction Street. In 1889 the proprietor was J. Eyles who advertised 'First-class accommodation to scullers' along with the facility of a boatshed. The hotel ceased to operate in 1918 but surprisingly the building is still intact but the façade is hidden behind retail shops at the base of Betars' Buildings. Evidence of the original sandstone wall is visible internally.

The hotel building may incorporate parts of the earlier establishment, the Flagstaff Inn. Today that name seems odd but there is also a Flagstaff Street and a Flagstaff car park off Cowell Street. All derive their names from the fact that there was a flagstaff relay station (telegraph) on the crest of the hill from about 1826 that was used to relay messages between Sydney and Parramatta.

Betars' Building was probably constructed between 1910 and 1920 by Frederick and Nicholas Betar. It is a typical example of shop-top housing from the early 20th century and has interesting architectural detailing. In 1932 the building contained a music shop, a mercer, a cake shop, and a hairdresser.



Betars Building.



The parapet wall.



Gladesville Hotel in 1878, still present but hidden behind Betar's Building.



Sheridan Memorial Clock

Location At the intersection of Wharf Rd and Meriton Street

Style Inter-war Functionalist style

Year 1941

Architects J.C. Sutherland

This clock tower is a landmark on Victoria Road. Originally planned as a traffic separation structure designed by Ryde Council Engineer J.C. Sutherland, it was constructed in 1941.

In October of that year, popular Ryde Alderman James York Sheridan of Gladesville died at the age of 53 and Council decided to dedicate the memorial to him. A granite plaque on the base of the tower pays testament to Alderman Sheridan. The clocktower was 'restored' in April 1969, though possibly was never built to the original design specifications. In June 2017, the clocktower was extensively restored and the top reinstated to the original form intended.

The age of the white building behind the clock tower in the 1990 photo is not known but in 1903 it was purchased by Joseph Kramer and known as Kramer Hall. From 1913, in the era of silent films, it was the first movie theatre in Gladesville operated by Gus Bowe, a Drummoyne grocer who became the 'picture show man' in Ryde. It later had a chequered history being used as a boat factory, roller skating rink, wartime camouflage net factory, and a production facility for Festival Records. In the 1990s it was a Fashion Warehouse known as the Green Door. It was demolished in 2015.



The Sheridan Memorial Clock.



The clockface of the Sheridan Memorial Clock, prior to restoration.



View of the Sheridan Memorial Clock facing towards Wharf Road and Meriton Street c1990.



Meriton's first apartment building in Meriton Street.

The origin of the name of Meriton Street is not known, however the street was the inspiration for the naming of Harry Triguboff's 'Meriton' construction company, now the largest developer in Australia. In 1968 Triguboff built his second block of units *Elizabeth Court*, at 20 Meriton Street.



Bayview Hotel (Tavern)

Location 166-170 Victoria Road, Gladesville

Style Inter-war Free Classical style

Year 1879, 1928-1934 (additions)

Architects Unknown

The original Bayview Hotel was the third hotel in Gladesville and was constructed in 1879 on land granted to John Doody. The present building replaced the much altered original between 1928 and 1934 when this part of Victoria Road was widened. It is a two storey Inter-war Free Classical style hotel which adjoins a two storey shop to the east and a plaza (Trim Place) to the west. Built to the new street alignment, the hotel displays a high degree of symmetry with its central balcony with arched openings and parapet walls either side.

The Bayview Hotel in 2012.



The Bayview Hotel in 2016.



The original Bay View Hotel in 1906.



Figure 20:
c1920 school
building



Gladesville Public School

3

Location Victoria Road, Gladesville

Style 1879 teacher's residence Victorian Georgian. c1920 & c1927 school buildings utilitarian Inter-War period with some Inter-War Georgian revival features.

Year 1879, c1920 & c1927

Architects Government Architect G. Allan Mansfield (1879 building), Education Department (1927)

Contractors P.W. and L.A. Richardson of Penshurst

Gladesville Public School was the first school in the emerging village and the site retains evidence of its sequential development. The original teacher's residence and the 1920 and 1927 school buildings are all significant and reflect the growth of education facilities over more than 135 years.

When the school opened, there were 56 pupils taught by Mr Bayliss. By late 1895 the enrolment at the school was 180 despite the school facilities only accommodating up to 100 students.

The former Teachers Residence built c1879.

By May 1917, population growth was posing such problems for the school that a new building was necessary. This was constructed on the corner of Coulter Street and Linsley Street at a cost of £13,560 and occupied in July 1920.

The new building reduced the playground area and six parcels of land were acquired for school use, including a portion of Orr Street which was closed to public access. Some houses on the acquired land were retained and rented out by the school.

In 1927, another new school building was constructed at the end of Orr Street, for £34,000.

In January 1944, Gladesville Public School became a Central School, catering for pupils up to 14 years of age. It reverted to a Primary School in January 1956, after the opening of the Meadowbank Junior Technical High School. In 1963, amalgamation of the separate girl's and boy's departments started and by 1966 the school had become co-educational.

Trim Place



The school originally had a frontage to Victoria Road but after road widening a remnant section became a small public park, now Trim Place, with a magnificent camphor laurel that was already a mature tree by 1943. During WWII, air raid trenches were excavated beneath this tree.

Trim Place is named after James (Jim) Trim, a popular teacher who taught at the school from 1915 to 1959. Within the park is a Seiko Civic Clock on a tall stand beneath which is buried a 1986 time capsule which is to be opened in 2036.



Trim Place showing the Seiko Clock and location of buried time capsule at the base of the clock.



Jordan Hall

Jordan Hall c1938.



Art Deco influenced detailing to the parapet wall.



Jordan Hall.

Location 6-8 Western Crescent

Style Inter-war Free Classical

Year 1938



Jordan Hall replaced the nearby 1867 Protestant Hall and was opened in 1938 as a popular place for entertainment with light-music and ballroom dancing. There may also have been a baby health centre there for some time. It is a good example of a community hall of the period with embellished architectural detailing, most evident in the Art Deco detailing of the parapet and dual-tone brickwork.

The interior of the main hall is simply decorated with exposed painted brick walls and steel roof trusses. The building has been used as the centre for RSL Youth Club activities for more than 67 years and it neatly terminates the view down Jordan Street.

Anglican Christ Church and Rectory



Location 220 Victoria Road, Ryde

Style Victorian Rustic Gothic

Year 1878

Architects Albert Bond (1877) Cyril and Arthur Blackett, sons of Edmund Blackett (1885)

Builders Peter Hall and Mr Albury (1877), John Morrison (1881-1885)



Anglican Christ Church.



View of the main front leadlight window.

Anglican services began in Gladesville in the 1867 Protestant Hall erected by the Royal Orange Lodge which was shared by several denominations. This hall was purchased by Christ Church in 1935, demolished during road widening, and its function replaced by Jordan Hall (Item 4). In 1988 a new hall, now used as a pre-school, was built on the footprint.

In 1877 land for Christ Church was purchased from Mrs Coulter. Peter Hall was engaged as the stonemason and Mr Albury as the carpenter at a cost of £1,742. The picture leadlight east window is by Lyon and Cottier and was installed in 1885, other leadlight windows were designed by Falconer & Ashwin, a Sydney firm who are strongly represented in NSW churches. The first service was held on November 17, 1878 by the Dean of Sydney, the Very Reverend William Macquarie Cowper. Archdeacon King was appointed rector and he was succeeded by Reverend William Lumsdaine in 1881 who resided in *Ellora* in Wharf Road (Item 14a).

The original church building forms the chancel of the existing building and was extended in 1885/6 by J. Morrison of Burwood at a cost of £3,400. Further extensions occurred in 1962. The three stages can be clearly seen inside the building by looking at the differing wood and decorations on the ceiling. In 1911 the rectory in Jordan Street was completed by Mr Pouley at a cost of £4,140.



Source: National Library of Australia



The Rectory.



War Memorial Gates

6

The War Memorial Gates.

Location 220 Victoria Road, Gladesville

Style Inter-War Gothic Revival

Year 1926

The War Memorial Gates constructed in 1926 are dedicated to local men who belonged to the Anglican Church and served in World War I. The gates were first erected at the corner of Victoria Road and Jordan Street, but were relocated after the widening of Victoria Road after 1931. They feature four sandstone pillars, ornate wrought iron double gates and six bronze memorial plaques.

The War Memorial Gates stand as testament to the local impacts of World War I on part of the Gladesville community and have played an important role during annual Anzac Day services.



Christ Church Memorial Gates in their original position in 1926.

Source: Australian War Memorial Permalink: <http://cas.awm.gov.au/item/H17951item/H17951>



Memorial service at Christ Church, Gladesville, 26th April 1926:

Crowd gathered to witness the unveiling of the memorial gates by the Governor-General Baron Stonehaven. The tall building in the background across Jordan Street is the Palace Theatre de Luxe.

Tyrell Street Character Area WALKING FROM ROSS STREET:



The street name is displayed within the pavement.

Tyrell Street was declared a 'Character Area' by Council in 2006 because the streetscape demonstrates the traditional preference of Australians for single family houses, providing a diverse range of house styles and sizes predominantly single-storey dwellings. Two properties have been listed as of local heritage significance and other properties exhibit particular characteristics or have a special history as described below.

The area around Tyrell Street was part of 60 acres granted to Mrs Hannah Thompson by Governor Bourke in 1835. Hannah Thompson was a free settler who arrived on the *Northampton* in 1815 who married convict Thomas Thompson in 1828.

The land changed in ownership multiple times and in 1877, the title passed to Edward Harte Acres, a grazier of Baukham Hills. Acres subdivided the land as Gladesville Park in 1886 and Tyrell Street was created, named after William Tyrell (Tyrrell) a First Fleet convict who was granted land nearby in 1792.

The subdivision was first auctioned by Hardie and Gorman on 31 July 1886, though there was little interest and it was subsequently offered for sale again in 1896 and 1899.

Gladesville was by then well established as a village centre and had road access to Sydney via the Gladesville and Iron Cove Bridges. However, the development of land was slow with building works in Tyrell Street not commencing until the arrival of the tram service along Victoria Road in 1910.

By 1909 there was one house in the street, increasing to 13 by 1915, and 26 by 1924. The last house was not constructed until the 1980s when a block formerly used as a nursery for Truscott's, a Gladesville florist, was sold. Since then a number of original weatherboard houses have been replaced by modern brick structures.



3 Tyrell Street

3 Tyrell Street.

Location 3 Tyrell Street, Gladesville

Style Federation Queen Anne

Year c1910-1915

Builder Unknown

The first owner of the house was John Holcombe (Halcombe), a plasterer from Balmain who apparently moved in after his marriage to Vera May Pride in 1916. For some years the house was named *Corelli* and it remained in Holcombe ownership until 1981.

The house is associated with politician Rodney Mark Cavalier, elected to the State seat of Fuller (later redrawn as Gladesville) representing the Labor Party in 1978. He became Minister for Education from 1984 to 1988 in the Wran and Unsworth governments and resided here for a few years.

19 Tyrell Street



Location 19 Tyrell Street, Gladesville

Style Federation

Year c1912

Builder Unknown

Sometimes our heritage is not visible.

A simple weatherboard home on this block was one of the first constructed in the street and occupied from 1912 by John and Lucy Elliot and their three boys; twins Jack James and Sidney Johnson and younger brother Lance William. All three sons enlisted in World War I in 1916 and 1917. They served in Egypt and France. Sid was wounded twice and the others contracted malaria but all returned safely to Gladesville and a welcome home party that must have been quite memorable! No trace of this house remains but the boy's service is recorded and remembered.



Sometimes our heritage is lost when we look only at what is presently on the site.



Elliot brothers welcome home to No 19 Tyrell Street in 1919.



42 Tyrell Street

Location 42 Tyrell Street, Gladesville

Style Federation Weatherboard cottage

Year 1918

Builder Unknown

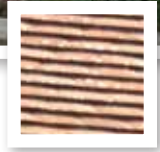
A modest single storey weatherboard house dating from 1918. The house is set on a sloping landscaped allotment, bounded at the street by a low masonry wall that was originally the foundation for a fence, possibly of woven wire. The house retains an intact form and displays architectural features that are typical of a weatherboard cottage from the early 20th century. A striking feature is the front verandah, which is integrated into the main roof form with terracotta shingles.

Lot 25E (part of which is now occupied by this house) and six other lots were purchased by Charles Mickleham in 1901. In 1918 the Public Trustee sold Lot 25E to Augusta Ellacott the wife of Frederick William Ellacott who was a foreman carpenter and probably the builder of the house. Sands Directory lists William Ellacott as the occupant in 1920 and 1924. At that time the house was named *Devon* as street numbers did not come into use until about 1929.

The original allotment had frontage to both Tyrell St and Western Crescent. The Western Crescent side was planted as an orchard. In 1948 this was subdivided and two fibro-cement cottages constructed in Western Crescent, one since replaced. Between 1926 and 1949 the property was owned by members of the Peel family who operated a dairy farm from Tennyson Road and across Peel Park from the 1920s to 1950 when John F. Peel sold his land to Ryde Council for a Council housing scheme.



42 Tyrell Street.



Terracotta shingle tiles
roof cladding.



View in 1976



View in 1984.



40 Tyrell Street

40 Tyrell Street, Gladesville.

Location 40 Tyrell Street, Gladesville

Style Inter-War Californian Bungalow

Year 1930

Builder Unknown

Built in 1930, this house was one of the last to be constructed. It was first occupied by Hector Bates and family. The house is of solid brick construction with an attractive façade that is characteristic of the early Inter-War period Californian Bungalow style.

22 Tyrell Street *Wallace Park*

Location 22 Tyrell Street, Gladesville

Style Late Federation / Californian brick bungalow

Year 1916

Builder Unknown



Newly finished house at 22 Tyrell Street on the handover day in August 1917. Note the woven wire fence which was then common. Members of the Gladesville Volunteer Workers Association are proudly standing on the front porch and pathway.

During World War I the Voluntary Workers' Association was established in several states. In NSW they were organised under the Voluntary Workers (Soldiers' Holdings) Act 1917, with the objective; 'To provide homes for disabled soldiers or for soldiers' widows or dependants.' Groups were organised within local government areas, Crown grants were available and the houses were financed by donations of land, goods, money and labour.

This house is one of more than 100 built by this organisation in Sydney and it was completed for the widow (Ida May) and family (two children) of Private Albert Besanvalle, 4th Battalion Infantry, who was killed at Lone Pine in Gallipoli between 6 and 9 August 1915. Albert was buried in a mass grave of about 250 men that he probably shares with Wallace Park, the son of Gladesville stonemason James and Catherine Park who was killed in the same action. This link is expressed in the name of the house in mirrored glass on the front door.

From *The Cumberland Argus and Fruitgrowers Advocate* Saturday 28 October 1916

'The Gladesville Voluntary Aid Association have arranged to build a brick house with a stone foundation, on an allotment in Tyrell street, Gladesville, and present it free of cost to Mrs. Besanville [sic], a soldier's widow. The building and fencing are estimated, to cost £450, a good proportion of which is already in hand. On Saturday about 60 men were helping, and the fencing and the foundations were completed. Carpenters have completed the making of the door and window frames, and the brickwork has since, been started.'

Very few Voluntary Workers houses remain intact in Sydney although one other which is a mirror image of this property remains in Earl Street, Hunters Hill.

Ida remarried in 1926 and lived in the house until moving to a son's home in Putney in her 70s and then to another son and family on Flinders Island where she died in 1967.



22 Tyrell Street.



Gladesville Psychiatric Hospital (Tarban Creek Lunatic Asylum)



c1874 gate house.

Location Victoria Road, Gladesville

Style Various

Year 1837

This is the oldest purpose built asylum in Australia. The first building was erected in 1837 and the complex continued to grow until the 1970s when there was a steep decline in the number of patients. Buildings were designed by many noted Government architects and the landscaped grounds are surrounded by extensive stone walls mostly constructed by Irish stonemasons from Hunters Hill.

The gate house adjacent to the Police Station in Punt Road was built in 1874.

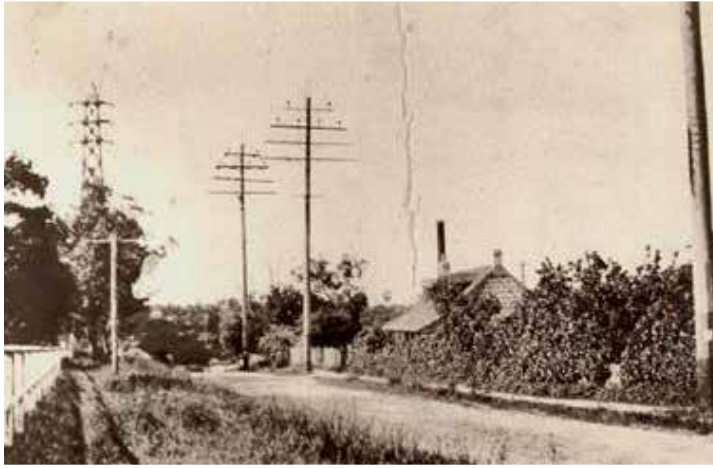
As the Gladesville Psychiatric Hospital site is of enormous historical importance, separate tours are organised by the Friends of Gladesville Hospital.



View of the gatehouse.



View of the stone wall.



Looking toward the river on Great North Road circa 1935-1940, Rockend on the right.

Punt Road is a small part of the original Great North Road, a 240km convict-built road of national significance constructed between 1826 and 1836 to link Sydney to the Hunter Valley and Newcastle.

Surveyor General Major Thomas Mitchell ordered surveyor Heneage Finch to identify a line of road from Bedlam Point to Ryde in 1828 but crossing the Parramatta River was not achieved until a punt was installed in 1832.

From the Bedlam Point Wharf (Item 12) the road climbed up the hill to the Government Flagstaff and continued north-west, running along the line of today's Victoria Road to St Annes Church, Ryde. Beyond the church the road turned north to travel through Eastwood and on to Pennant Hills and another road followed the line of present-day Victoria Road to Parramatta.



Great North Road trail marker.

Location 40 Punt Road, Ryde

Style Victorian Georgian

Year c1860s

Builder/Architect John Crotty



Rockend



Rockend.

The land on which *Rockend* sits was purchased by John Terry Hughes in 1836 but was later repossessed by the Bank of Australia in 1843 when Hughes went bankrupt during the 1840s depression. From 1850, the land passed through various owners and accumulated in size and eventually it was subdivided by Sydney solicitor W.W. Billyard. Lot 47 was sold to builder John Crotty in March 1857 and he built *Rockend Cottage*.

The design with two doors onto the front verandah, and its proximity to the Great North Road, suggests it was originally built as an inn, a recommendation that had been made by Thomas Mitchell in 1830 but apparently not followed. After Crotty's death in 1859, the property was offered for sale, being described as 'a substantial stone-built family residence, containing seven rooms and kitchen'.

Emily Mary Barton (1817-1909) purchased the property in August 1866 and she renamed the house *Rockend*. Her grandson the poet and author, Andrew Barton (Banjo) Paterson, lived with her for a number of years whilst attending Sydney Grammar School. In 1869 and 1891, she purchased four adjoining lots.



Rockend about 1910.

In 1922 the five-acres of land, including *Rockend* was purchased by Harold Meggitt for the construction of a Linseed oil mill. The cottage was used as offices and substantially modified. The mill operated in what is now Banjo Paterson Park (Item 11) until 1974 when the site was abandoned until being purchased by the State Government and later passing to Ryde Council for a park development in 1978. The restored cottage was leased in 1986 and is currently used as a restaurant.



Rockend about 1980 prior to restoration.

Banjo Paterson Park

11

Location Punt Road, Gladesville



Halmeg Ltd linseed oil mill, Punt Road Gladesville around 1945.



Guests at the official opening of Harold Meggitt's linseed oil mill, Punt Road Gladesville in November 1923 Foster, Arthur Ernest, c.1879-1958, photographer

This land forms a part of John Terry Hughes purchase in 1836. In 1922 the land was held by Harold Meggitt Ltd who operated a linseed oil extraction plant. When the factory closed in 1974 the site was proposed for construction of 174 townhouses.

Agitation from the local community encouraged the State Government and Ryde Municipal Council to acquire the land and create a waterfront park in 1978. The factory was demolished but a cottage on the property was retained and later restored (Item 10).

Banjo Paterson Park is an attractive riverside parkland, retaining some of the natural shoreline which is an uncommon feature along the river, with views to Looking Glass Bay and the Parramatta River.



Banjo Paterson Park (Former Halmeg Ltd site) Gladesville.



Bedlam Wharf sandstone remains.

Bedlam Point Wharf

Location Punt Road, Gladesville (end)

Year c1832

These wharf remains have historic significance as part of the construction of the Great North Road and the operation of ferry services at Bedlam Point from 1833 to 1884. The ferryman's cottage stood on the rock above the landing place. The first puntman was Robert Bateman who later lived in Batemans Avenue. He was on call at all hours and as well as taking travellers across the river he also met steamers in mid-stream to transfer passengers. In 1834 charges were 1/6d for a four-wheeled wagon, 1/- for 24 sheep or pigs, and double rates on Sunday.

The original nature of this wharf is uncertain as the structure was used for other purposes when the punt was discontinued after the opening of the Gladesville Bridge. The foundation stones may date back to the time of the punt but other layers exposed in the eroded face include a tar sealed surface which was not available in Ryde until 1887.

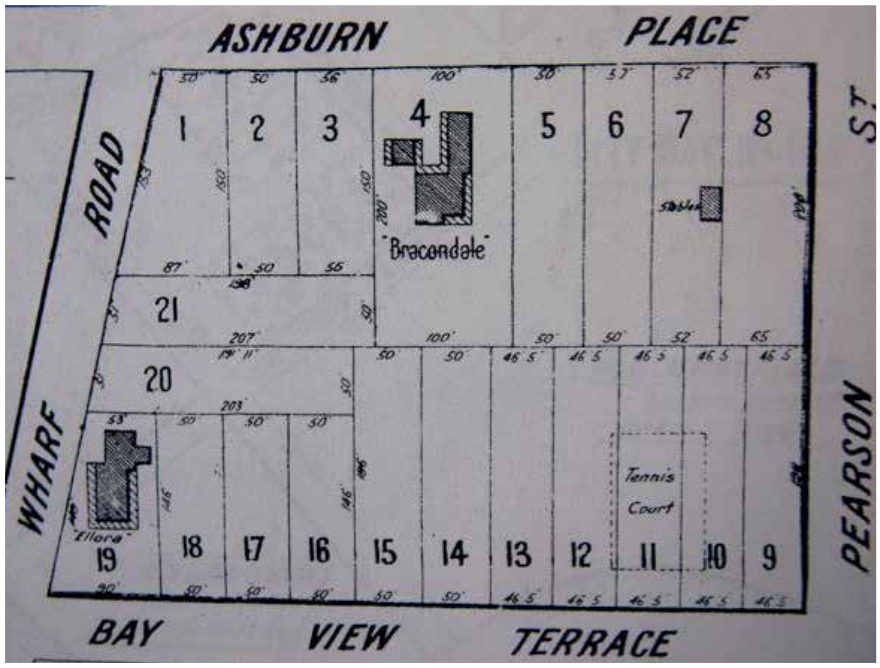
Stone alignment marker



Location Corner of Ashburn Place and Wharf Road

The alignment marker is 300mm square with a domed top and is made of quartz sandstone. It is one of about 50 stone alignment markers known within the Ryde LGA. The stone markers were used to establish the alignments of major roads and as surveyors' reference markers for subdivision boundaries. This one was probably placed when the Herring Estate including the homestead *Bracondale* was surveyed for sale in 1919.

Stone marker, corner of Ashburn Place & Wharf Road, Gladesville.



The stone markers were important in setting out the boundaries for subdivision such as the one shown.

Wharf Road properties WALKING FROM ASHBURN STREET:



Wharf Road was the central spine of William Billyard's Glades Ville Estate of 1855. It connects the Great North Road (Victoria Road) with the river and is the second oldest official road in Gladesville.

Large blocks suitable for 'villa residences' were sold but building was slow. Over time further subdivision occurred but a number of properties retain their original style and the street contains an interesting mix of architecture right through to recent constructions.

Location Corner of Wharf Road and Amiens Street (formerly Bay View Terrace) 54 Wharf Road / 19A Amiens Street

Style Victorian Georgian

Year 1865

Builder/Architect Unknown



Ellora

The dwelling *Ellora*, opposite *Woodstone* (Item 18c) was built circa 1865. *Ellora* sits on Lot 58 of Billyard's subdivision. It is associated with a number of prominent local people and their families: well-known solicitor and Alderman Thomas Salter, for whom the house was built; Mr. Gerrard Edgar Herring, Under Secretary for Lands and Mayor of Ryde in 1874, 1876 and 1880-1884, who was the owner from 1870. By 1876 the Herrings had built a second house of a similar size at the opposite end of the property, naming it *Bracondale* which became the Herrings' family home while *Ellora* was tenanted by a Mr Folkard and later by the Reverend William Lumsdaine, Rector of Christ Church, Gladesville, who resided here from 1884-1902.

Not much is known on the occupants of *Ellora* after 1905 when the new rectory was occupied at Christ Church, then in 1916/1919 after Gerrard Herring's death one of his sons Sydney C.E. Herring subdivided and auctioned the Herring Estate including both houses.

It is a substantial weatherboard house situated on a prominent corner site with a mature garden.

Amiens Street (previously Bay View Terrace) was renamed after World War I, to commemorate one of the 1916 battlefields of the Somme, France.



Ellora.

Avondale



Location 76 Wharf Road, Ryde

Style Late Victorian period house

Year 1888

Builder Unknown

Once part of John Glade's grant of 1802, the property went through various owners after 1838, and eventually in 1887 it was purchased by Sydney solicitor, Edwin Sandys Lumsdaine.

Lumsdaine oversaw the house being built in 1888 and named it *Blanerne* after the Lumsdaine family property in Berwickshire in Scotland. A later owner of the house, Alfred Edwin Knibbs named the house *Ercildoune* and it was named *Avondale* more recently.

76 Wharf Road, Gladesville.

The property has had several modifications over the years. The stables have been converted to a self-contained guesthouse and a swimming pool added. According to a 2012 Real Estate description, Edwin Lumsdaine, had a small chapel built within the house, now used as a study. Lumsdaine later became an Anglican minister like his father who served at Christ Church Gladesville and who lived nearby in *Ellora* (Item 14a).





Meditation Park

Location End of Wharf Rd, Looking Glass Bay

In Meditation Park, adjacent to the boat house, a 1979 plaque commemorates this site as the probable location of the first meeting between Europeans and a local Aboriginal man of the Wallumudegal on 15 February 1788. The name of the Aboriginal man is not recorded but Governor Phillip and Lt W. Bradley came ashore near here and presented the Aboriginal man with a hatchet and a looking glass (mirror).



Plaque commemorating the landing by Governor Arthur Phillip.



View of the Boat House.

First Post Office site and Boat House



Gladesville's first post office was built at the end of Wharf Road in 1861, with William Billyard possibly having been responsible for this building. The first Postmaster was Mr Buckingham with a salary of £24 per year plus a commission on stamp sales.

In 1940, the River Sailing Club was founded. It later became the Parramatta River Sailing Club following its amalgamation with the Parramatta River Yacht Club.

In 1952 they planned a new club house and acquired the c1920s crib room from the AGL Mortlake Gasworks (a major local employer located across the river). The building was relocated to the present site by floating it across the Parramatta River, where it was converted into their new club house. New ramps, decks and space for boats were added.

Location Near the end of Wharf Road

Style Unknown

Year 1861

Builder Unknown





Gladesville Wharf

Location At the end of Wharf Road

Style Unknown

Year 1859

Builder Unknown



Location of the former Wharf.

The Glades Ville developer, William Billyard, was very aware of the need to connect the properties with river transport and he had constructed a wharf at the end of his main road in 1859. At first it may have been a private facility 'reserved for the use of the public upon the property', but it functioned as a public wharf within a few years.

In the later 19th and early 20th century the wharf would have been a good place from which to view the very popular professional sculling races along the river that ran for just over 5km from the Meadowbank Railway Bridge to a finishing line at Searle's monument on Three Brothers Rocks at Henley. Today the wharf lacks the timber deck it once had at which the ferries tied up to embark passengers.



View of the wharf c1900.

Euroma

Location 55 Wharf Road, Ryde

Style Victorian Italianate

Year c1880

Builder Thomas Pidding

18a.



View of Euroma.



Detailed view of the sandstone chimney.

This land was once part of John Glade's grant of 1802 and later became Lots 19 and 20 of the Glades Ville Estate subdivision.

Purchased by William Lowther on 9 October 1877, on 31 October, 1879 the land was transferred to Thomas Smedley Pidding, who was a telegraph inspector, an Alderman at Ryde Municipal Council (1889-1891) and Mayor in 1896.

By April 1880 there was a house on the property with the likelihood that Thomas Pidding built it. By 1883 the house was known as *Euroma Cottage*. Prior to the Presbyterian Church (Item 1) being built, meetings were conducted in this cottage. Pidding occupied the house until his death in 1922, and his wife, Jane O'Donnell Pidding stayed until her death the following year. The house displays an interesting variety of architectural detailing.



Wimberdale and St Elmo

Location 43-45 Wharf Road, Ryde Wimberdale (No.43) and St Elmo (No.45)

Style Federation Queen Anne

Year 1914

Builder Unknown

These two dwellings were built in 1914 on re-subdivision of an area first subdivided in 1876 and originally part of John Glade's 1802 grant.

Both houses display architectural characteristics attributed to the Federation Queen Anne style of the early 20th century, though there are some notable modifications.



View of Wimberdale and St Elmo.



View of Woodstone.

Woodstone

Location 39 Wharf Road, Ryde

Style Victorian Georgian

Year 1867, 1889 (modifications)

Builder Unknown



Woodstone is associated with Walter Scott Campbell the son of Dr Francis Campbell, superintendent of the Gladesville Psychiatric Hospital. Walter grew up in Gladesville and recorded much of the local history including a great many Aboriginal rock engraving sites around Sydney. He was Chief Draftsman of the Department of Mines, later Chief Inspector of Agriculture, an Alderman in the first Ryde Council in 1871, and he contributed to the construction of Christ Church (Item 5).

W.S. Campbell constructed a four-room cottage with an attic on this site in 1867. This was extended by Edwin R. Mackenzie in 1889, sold to Frederick A. Elgood a dental surgeon in 1925, then to Malcolm H. Pike who added a mansard roof to the upper storey. In 1985 attempts were made to return the dwelling to its original form and in 1990 it was leased to the University of Technology, as the Vice Chancellor's residence.



The Pines and Speen

Location 37 Wharf Road, and 36 Ashburn Place

Style Late Victorian

Year c1890s

Builder E.R. Mackenzie



View of The Pines.

The Pines stands on land that has been through various owners beginning with Lewis Gordon in 1836 and becoming part of the 1855 Glades Ville Estate. Edwin Robert Mackenzie who resided at *Woodstone* (now 39-41 Wharf Road, (Item 18c) reputedly built *The Pines* and the adjacent house *Speen* (36 Ashburn Place) for his two daughters in the early 1890s. *The Pines* was first occupied by Mabel Dalrymple Mackenzie.

Constructed of sandstone, it is a fine example of a single storey dwelling from the late 19th century and is situated within a large landscaped setting, now partly screened from Wharf Road. It has been substantially modified in the 20th century.

In the 1860s the Mackenzie family held grazing property in New England and it seems that they retired to Gladesville. Edwin Robert Mackenzie died in 1896 and the properties at Gladesville were held in trust for his widow, Emma Louisa Mackenzie. After her death in 1907, the property remained in her name until 1923. Her son-in-law resided at *The Pines* until 1908, then moved into *Woodstone*.

Amiens Street



One house belonging to John Glade a third fleet convict, after whom Gladesville is named, was located close to the present corner of Meriton and Amiens Streets. He had another near George Street.

Glade was a good farmer as he had 13 acres of land under wheat and maize here by 1802 and was supporting three people 'off stores', meaning that they did not depend on the Government for provisions. By 1828 he held 140 acres with 40 acres cleared and six acres under cultivation.

Group of Federation Queen Anne style dwellings

Location 23 - 31 Amiens Road, Gladesville

Style Federation Queen Anne

Year c1915-1920

Builder Unknown

A group of five houses (originally six) built between 1915 and 1920 probably by the same builder.

The group of dwellings each display similar architectural detailing which reinforces the early 20th century period housing character of the street.



23 Amiens Street 2015.



Glades Bay Park and Wulaba Track

Location Accessed from; Delmar Parade, Ashburn Place, York Street and Glades Avenue

In 1969, the National Trust reported that 'Glades Bay Reserve is an example of a foreshore area retaining sufficient elements of 'naturalness' to warrant retention and restoration'.

They recommended that, 'every effort should be made to maintain, restore and accentuate the natural qualities of this reserve'. After considerable public discussion, Council established the Glades Bay Native Gardens as part of the Ryde Centenary Celebrations in 1970.



View of the monument commemorating the Ryde Centenary Celebrations in 1970.



View of an Aboriginal rock carving depicting a wallaby.

The concept was that the park would be developed as an Australian wildflower garden. In 1943 natural vegetation in this area was sparse with exposed sandstone and patches of clearing. Mangroves were scattered along the shoreline. In the development of the 'Native Garden' sandstone lined garden beds were constructed and apparently planted with Australian species but these were not of local stock. These beds may still be traced but the present 'bush' has regenerated from the mid-20th century cover and some of the planted species. Dense mangroves, some *Phragmites* reed swamp, and small patches of saltmarsh now line the river bank.

Half of this land was in the Doody/Benson grant of 1795/96 and the remainder was in John Glade's grant of 1802.

It is also one of the few places in Gladesville where evidence remains of the original inhabitants – the Wallumedegal and these sites are interpreted along a newly refurbished walkway that goes through the park and along the river's edge. First constructed as the Wulaba Track in 2002 by Ryde Council in consultation with the Metropolitan Local Aboriginal Land Council, the track has a number of interpretive signs and passes by numerous sites of Aboriginal significance.

The Ryde Heritage Walking Trail Book is a project of the City of Ryde and the Ryde Heritage Advisory Committee.

Ryde Heritage Advisory Committee 2017

Staff Convenor Ms Lexie Macdonald

Heritage Advisor Mr Michael Edwards

Local Studies Librarian Ms Angela Phippen

Chairperson Former City of Ryde Councillor, Jane Stott

Delegate Former City of Ryde Councillor, Denise Pendleton

Former City of Ryde Councillor, Terry Perram

Committee members Ms Cate Fisher

Mr John Hull

Ms Beth Kosnik

Ms Lyn Langtry

Ryde-Hunters Hill Flora & Fauna
Preservation Society

Ms Suzanne Marks

Dr Peter Mitchell OAM

Mr Jim Vaughan

Mrs Betty Willis

Brush Farm Historical Society

Ryde District Historical Society

We hope to produce additional booklets in the future and would appreciate feedback from readers. Please contact cityofryde@ryde.nsw.gov.au

