



Macquarie Park and North Ryde update

Transport for NSW



Station Link services

- More than two million trips since 30 September 2018
- Station Link services generally maintaining frequency across all routes
- The team is actively monitoring Station Link operations and the broader transport network.



Return to work, school and university

- SL7 services between Epping Station and Macquarie University Campus resume 18 February 2019 in time for Orientation Week
- Joint Operations Centre will be actively monitoring the network as Students return to University
- Pink Shirts will return, assisting students attending Orientation Week activities and during the first week of semester 1
- Bus Marshalls will continue to monitor and manage Station Link bus stops to ensure operational efficiency
- NSW Police, Transport Commanders, and Transport Emergency Patrol will return to the field monitoring network operations.



Return to university

- Macquarie University and Businesses on campus have been notified of SL7 services resuming 18 February 2019
- We've provided key messaging to be communicated via University channels
- Posters for SL7 services will be provided to University to raise awareness of services resuming
- An email notification and Travel Choices Newsflash will be sent out to all registered stakeholders
- Facebook post will be in market from 18 – 25 February 2019.



Facebook post



SL7 Poster



Bike it to Uni

- Collaborating with a cycling training provider to deliver a 3 day program to encourage students and staff to consider riding to Macquarie University
- Cycling information sessions will be held on campus between 26 and 28 February 2019, 10am – 4pm.
- Program will provide assistance with:
 - route planning to and from Uni
 - advice on cycling equipment
 - bike maintenance and check ups.



(E)Bike it to Uni!

Want to get more active on your commute to Uni and still be on time for that morning lecture?

Transport for NSW, PedalEd and E-Transport will be on Wally's Walk near the Atrium, with free tips and advice about bike riding to Uni.

Session dates:
26, 27 and 28 February 10am to 4pm

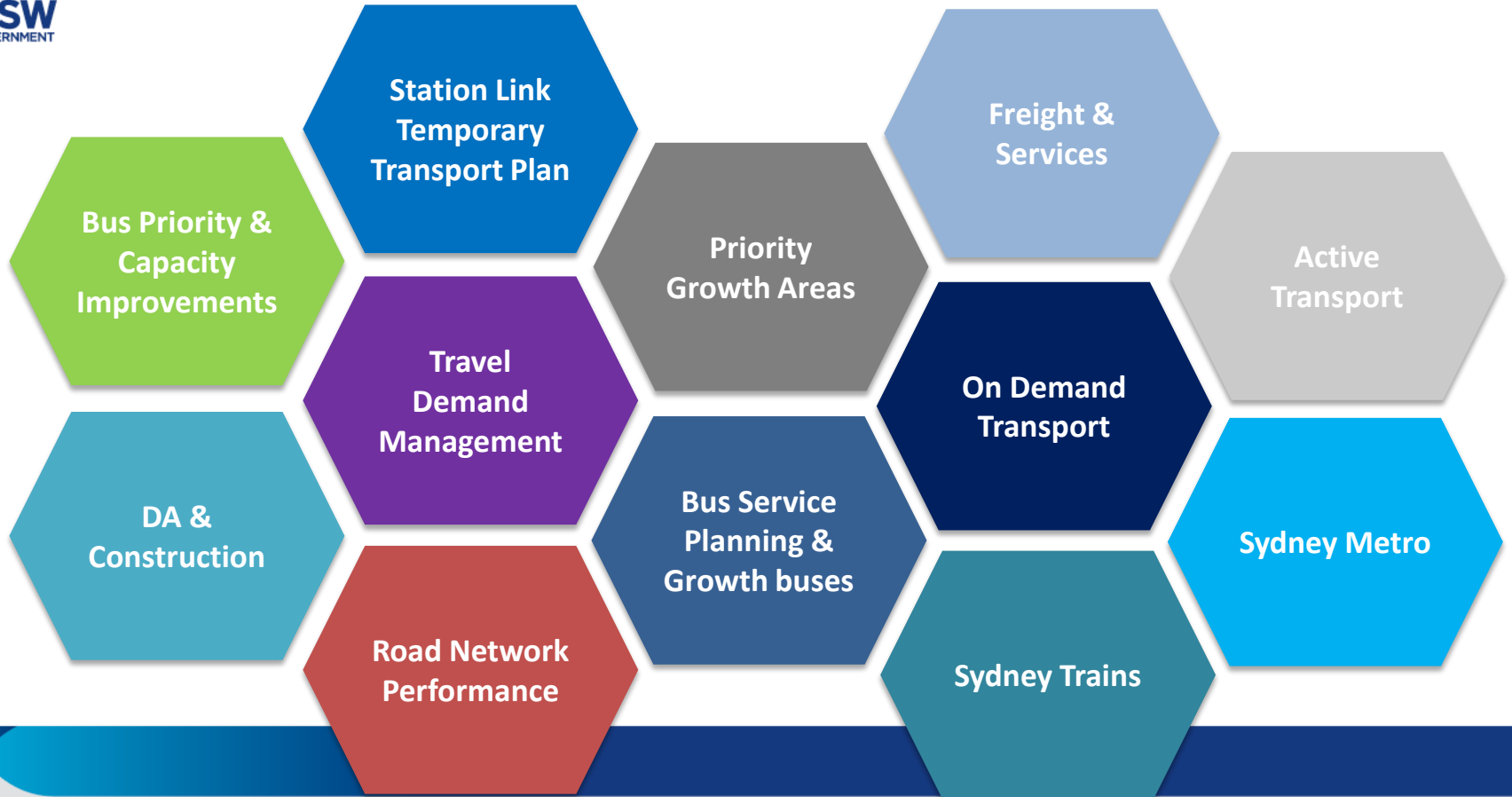
- Test rides on E-bikes and bikes
- Free designer bike bells
- Route planning for riding to and around campus.
- Advice on choosing a suitable bike

*Bike maintenance, check ups and tune ups 11am to 2pm





Transport Action Plan



Bus network improvements for Macquarie Park and North Ryde

- Extra services from 30 September 2018 delivering extra AM and PM shoulder peak and evening services on routes:
 - 288 Epping to City via North Ryde
 - 293 Marsfield to City
 - 294 Macquarie University to City via Epping Road
 - M54 Parramatta to Macquarie Park
 - All night bus N91 extended to Macquarie Park from 1 March 2018
- Strong growth is occurring on the bus network.



Over
2,200
extra weekly
bus services
since 2011

Bus network improvements

- Macquarie University Bus Interchange
 - Planning and investigations underway
 - Moving towards final business case to government
- Further bus priority infrastructure is needed to support more bus services
 - Providing road capacity for more bus services
 - Improving journey times and reliability of the bus network and for all road users
- Sydney Metro will unlock more bus network benefits
 - Bus network reviews will be implemented to integrate the network
 - Integrated transport is the key to increasing public transport mode share.



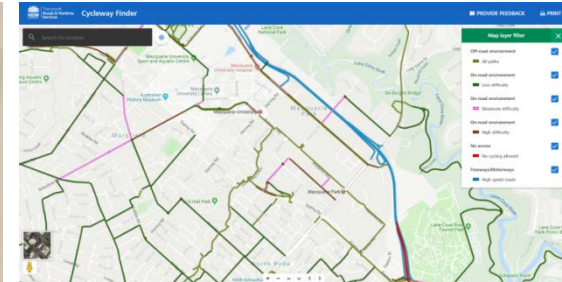
On Demand

- On-demand bus trial
 - Macquarie Park trial commenced March 2018
 - Refinements made to reduce waiting times in November 2018
 - Other On-demand services operate Carlingford-North Rocks-Epping.



Active transport

- Bike Wise Training at Macquarie University Campus and Optus
 - Knowledge and confidence seminars
 - Skills, control and confidence practical training
 - Personal bike trip planning
- Epping Road Cycleway
- Macquarie Park Travel Choices Cycle map
- RMS Cycleway Finder
- City of Ryde - Shrimptons Creek Cycleway
 - \$5m NSW Government contribution.




Road network and kerbside use

- Improved monitoring infrastructure for the Transport Management Centre
 - More CCTV at key intersections
 - Power supply upgrades to traffic signals
- Kerbside use changes
 - Standardisation of No Parking times to encourage peak spreading
 - Working with the City of Ryde for more short term parking
- Delhi Road upgrade
 - Additional lane eastbound has halved travel time in the AM Peak
- A safer road environment on Waterloo Road
 - 50km/h speed limit
 - New pedestrian refuges supported by speed cushions on the approach to Khartoum Road.



Travel Choices Macquarie Park


TRAVEL HACK
#56




I check emails at home before heading to work.

Roads around Macquarie Park are less busy after 9:30am.

Prepare for change
mysydney.nsw.gov.au




TRAVEL HACK
#65



I shop later on Thursdays and skip the traffic.

Roads around Macquarie Park are less busy after 6:30pm.

Prepare for change
mysydney.nsw.gov.au



TRAVEL HACK
#45



I walk the kids to school on Tuesday.

More businesses are encouraging flexible working.

Prepare for change
mysydney.nsw.gov.au



TRAVEL HACK
#40



Once a week I shoot hoops after work and skip the traffic.

Roads around Macquarie Park are less busy after 6:30pm.

Prepare for change
mysydney.nsw.gov.au





Sydney Metro

- \$8.3 billion investment opening in the first half of this year
- Eight new metro stations and five upgraded stations on Sydney Metro Northwest
- From 2024 a rapid transit connection between key economic precincts and Macquarie Park:
 - Chatswood-Crows Nest
 - North Sydney
 - Sydney CBD
 - Sydney Airport via Central Station
- Planning for Sydney Metro West has commenced.



Metro train testing



Metro train testing



Platform screen doors



Stations



Stations



Services start mid 2019





Wendy