



# Macquarie Park Forum

7 May 2015

# Agenda

- Welcome
- Presentation NWRL
- Parramatta Light Rail
- MPSL Infrastructure update
- Marketing Group Update
- Connect Macquarie Park +North Ryde Update
- General Business

# NWRL – Temporary Transport Plan



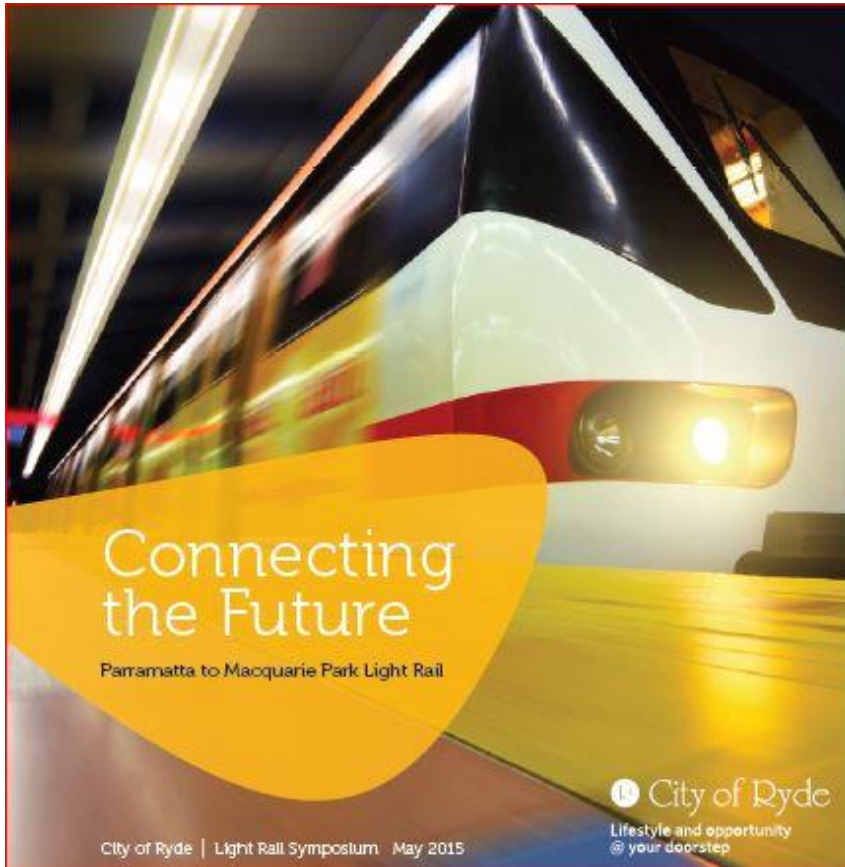
Tom Gellibrand

# Parramatta Light Rail



Connections: The four possible light rail routes around Parramatta to be considered by the state government.

# Light Rail Symposium – 8 May 2015

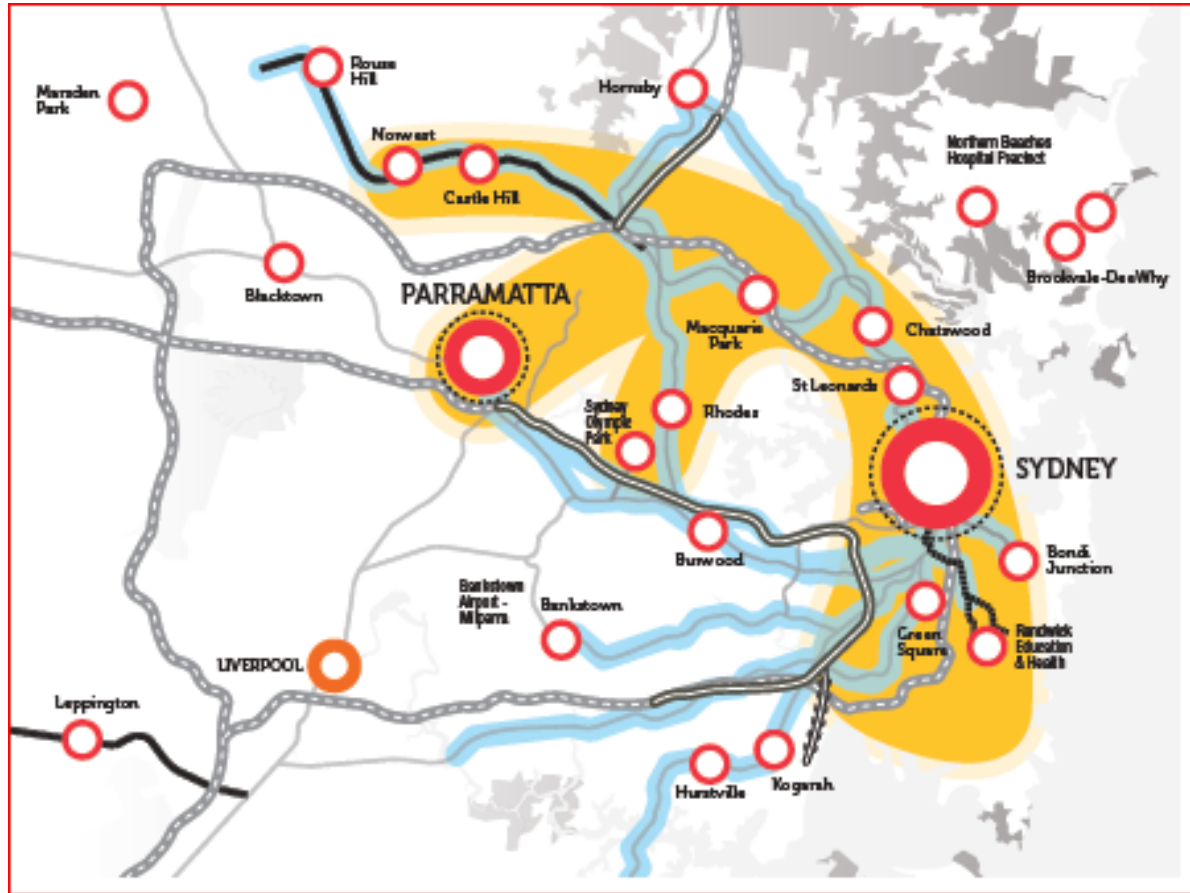


Light Rail Symposium  
Co-hosted by CoR and MQU

Venue – MGSM  
10:30am for 11 am – 1pm

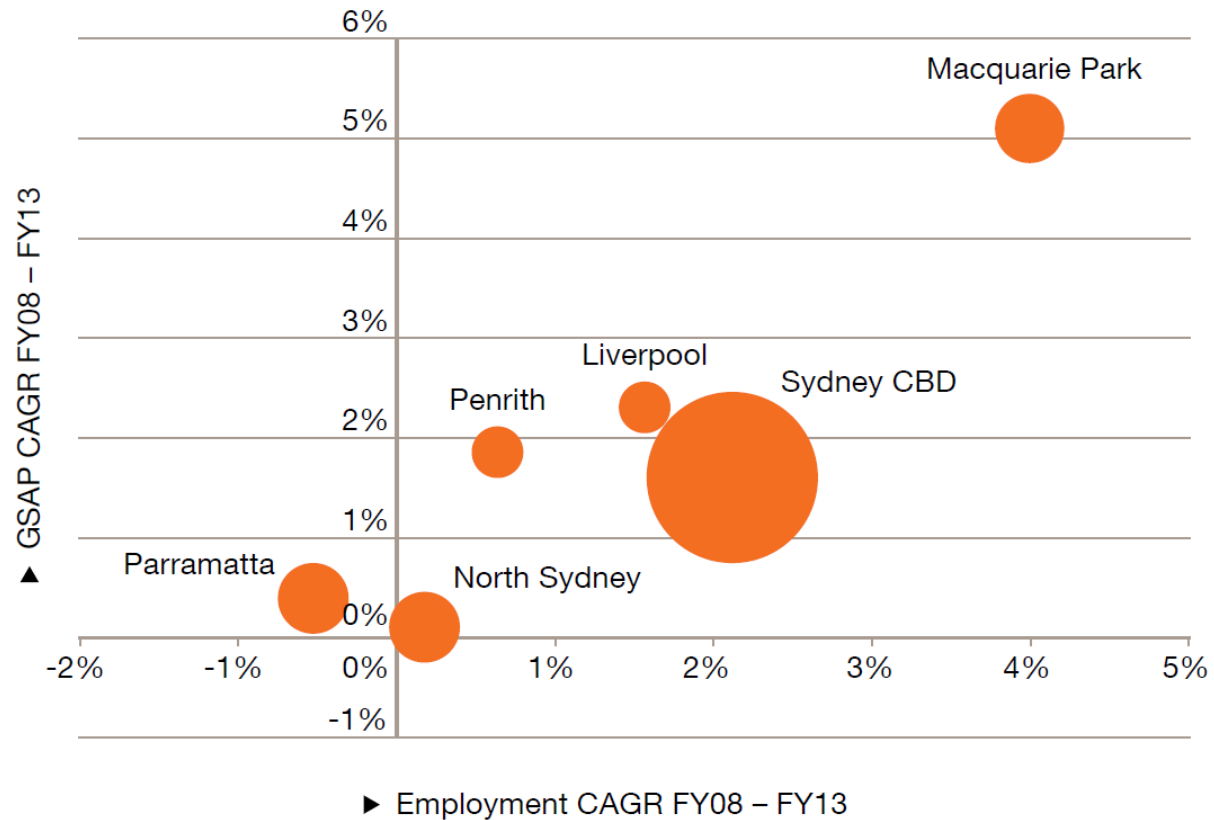
It's purpose...

# Mac Park – strategically located



# Mac Park leads growth

Figure 2: Sydney's economic clusters



Bubble size = Gross Small Area Product

'pwc Big City Analytics April 2015'

# Light Rail - Video





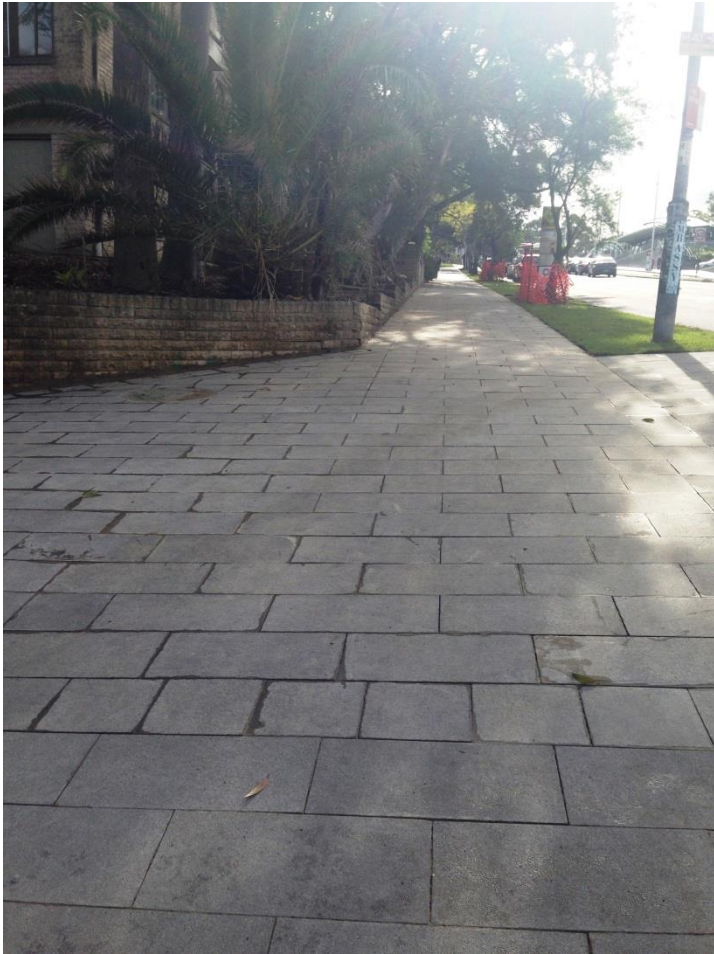
# MPSL Infrastructure Update

- Complete link along Lane Cove Road (Canon Site)
- Complete link along Waterloo Road (near Cottonwood Crescent )
- Complete footpath upgrade along Delhi Road from North Ryde Station to National Park (starting July)
- Construct a footpath along the southern side of Julius Ave, North Ryde (starting mid May)
- Construct a footpath along Plassey Road from Delhi Road into the National Park (starting July)

# Lane Cove Road – Canon Site



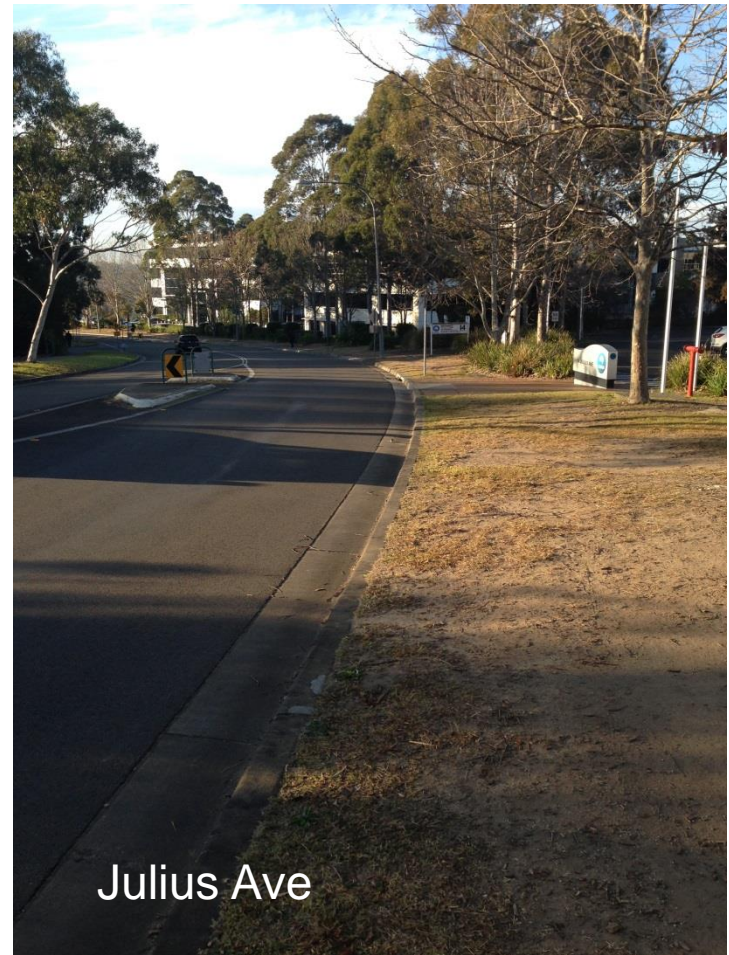
# Waterloo Road – Cottonwood Crescent



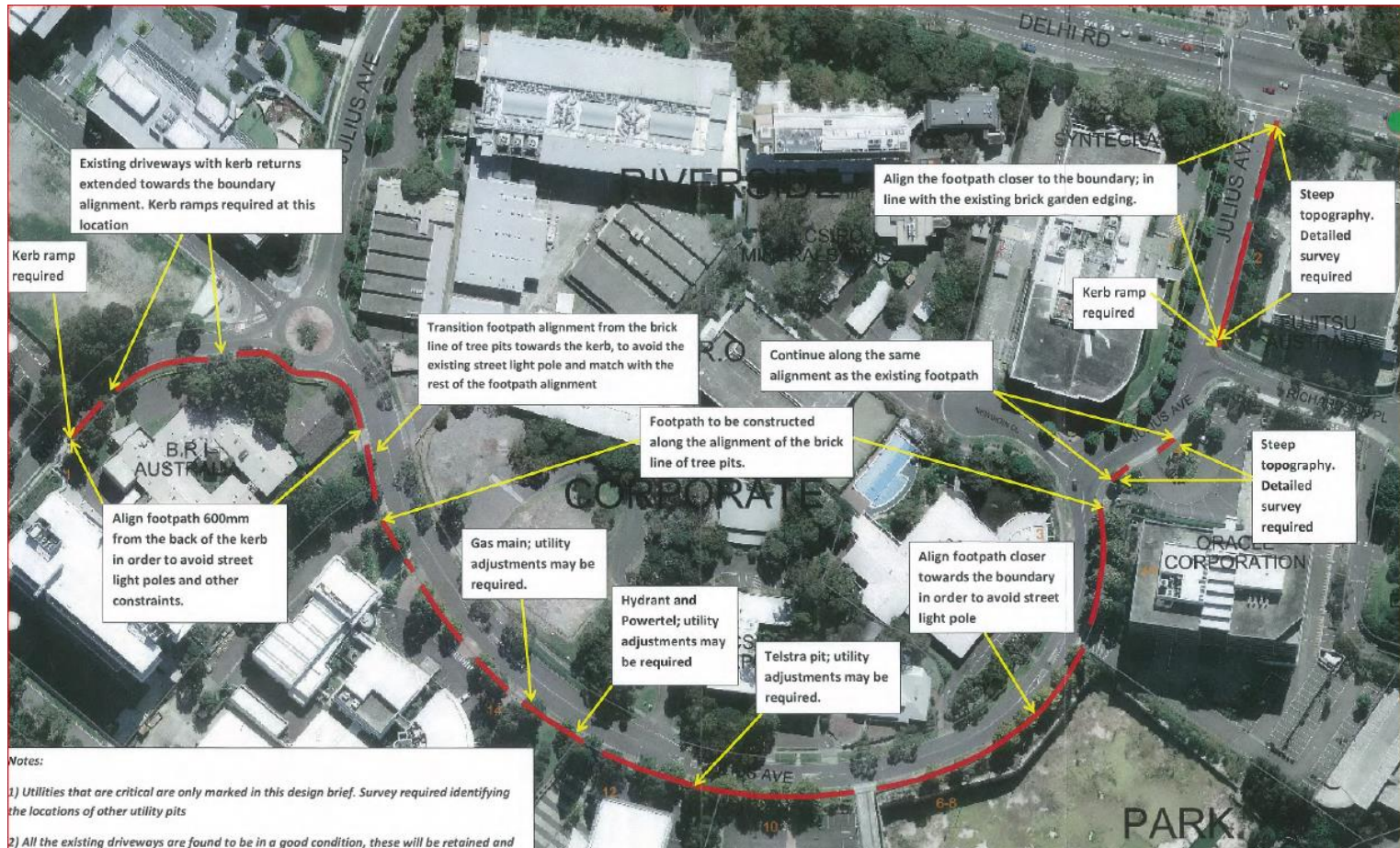
# Shared Paths



# Soon to start....



# Julius Ave – footpath upgrade



# Marketing Update

## 1. Macquarie Park Investment Prospectus Launch at Optus headquarters

- 120 people in attendance
- 400 booklets distributed

## 2. eNewsletter on 14 April to complete Macquarie Central Park online survey.

## 3. Approval given to appoint casual position for Macquarie Park website support.

## 4. Mobile Food Vending Policy currently being drafted by Urban Planning Department.





# Transport Management Association Update

Rebecca Lehman, Connect Macquarie Park + North Ryde



# General Business

- Next Meeting Thursday 6 August 2015