



# Macquarie Park Forum

3 August 2017

# Agenda

- Welcome
- Macquarie Park Public Art Plan
- Development Approvals Update – Macquarie Park
- Sydney Metro – Macquarie Park Transport Access Plan
- Strategic Review - Macquarie Park
- MPSL Projects
- Connect Macquarie Park +North Ryde
- Marketing Activities
- General Business



ARTSCAPE.

MACQUARIE PARK  
CORRIDOR  
**PUBLIC ART PLAN**



# Macquarie Park

## Macquarie University Precinct

Mixed Use -residential, retail, community in expanded podium and four towers

## 120-126 Herring Road - Approved

23 storey mixed use development with 198 apartments & 107m<sup>2</sup> of retail space  
Value: \$61.4M

## Macquarie Shopping Centre – Stage 1 Approved by Sydney Planning Panel

Mixed Use -residential, retail, community in expanded podium and four towers

Value: \$941M



## Macquarie University “Incubator” –

Approved Biological Science building

Value: \$14M

## 137-143 Herring Road – Under Assessment

2 residential buildings with 297 apartments proposed

Value: \$110M





# Macquarie Park

45-61 Waterloo Rd – New public park

## 80 Waterloo Road – Under Assessment

16 to 20 storey mixed use development with 409 apartments & 307m<sup>2</sup> of retail space

Value: \$154M

## 82-84 Waterloo Road – Under Assessment

2 x 20 storey mixed use towers with 357 apartments & 167m<sup>2</sup> of retail space

Value: \$122M

## 101-107 Waterloo Road – Under Assessment

4 x 23 storey mixed use towers with 680 apartments & 1,744m<sup>2</sup> of retail space

Value: \$207M

## 25-27 Epping Road – Under Assessment

Staged mixed use development; 8 x 3 to 17 storey mixed use towers with 885 apartments, a retail podium & a 2,500m<sup>2</sup> community facility

Value: \$320M



## Lachlan's Line – Infrastructure under construction

Upgrade of Waterloo/Wicks Intersection underway





Stamford – 110 Herring Road



# Park One - 80 Waterloo Road





Macquarie University

Macquarie Centre

Macquarie University  
Train Station

2,4,6,8 & 10 Cottonwood Cres,  
Macquarie Park



2-10 Cottonwood Crescent





101 Waterloo Rd





66 Talavera Rd – Planning Proposal

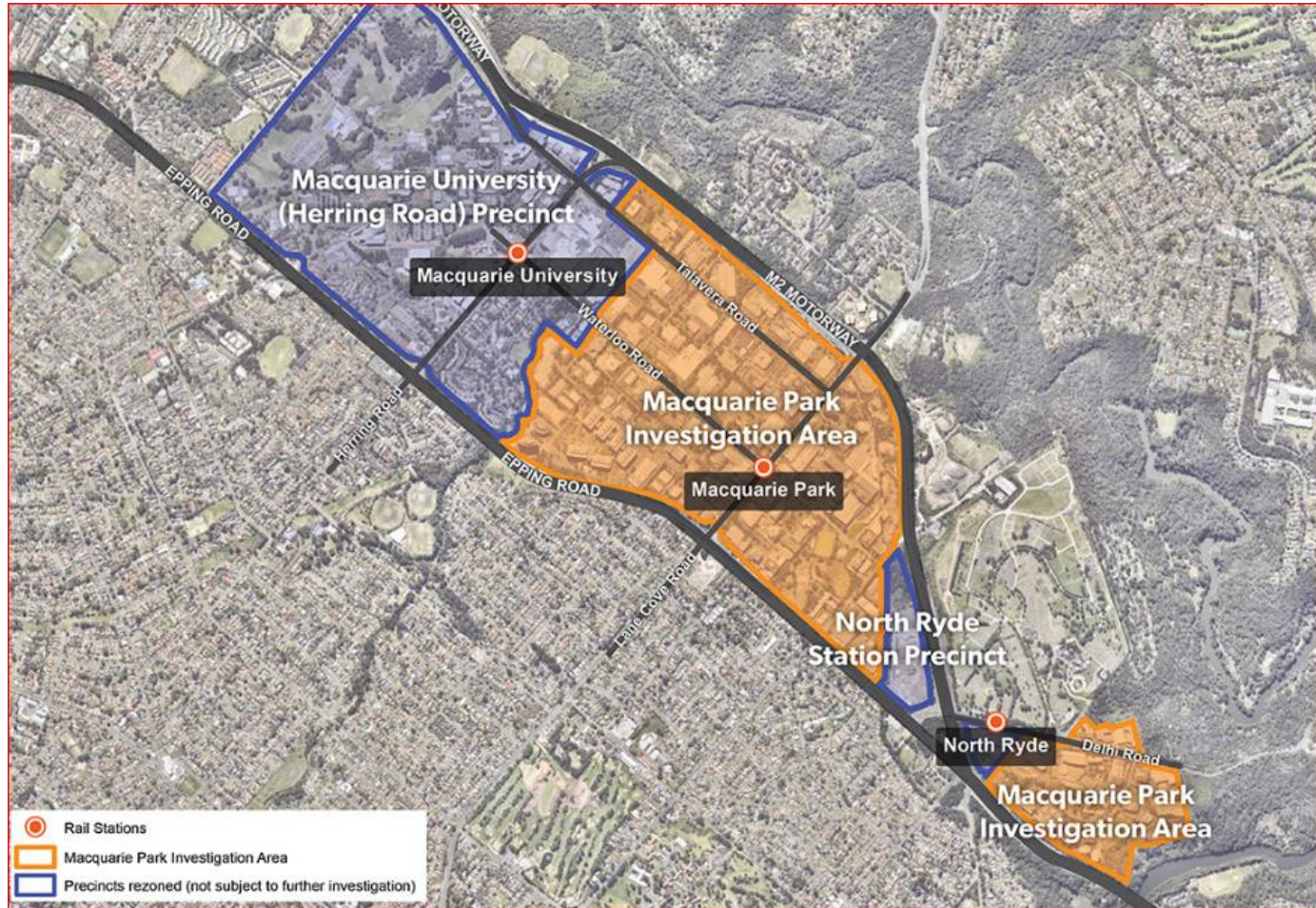


# Planning for the Future

## Macquarie Park Strategic Review & Draft North District Plan



# Macquarie Park Strategic Review





# Macquarie Park Transport Access Plan



**Sydney Metro**

Australia's biggest public transport project

# Short Term Car Parking Trial

Bitizios consulting has been engaged undertake behavioural surveys and to study traffic and parking movements

Around 40 sites across Lyon Park, Byfield, Giffnock and Eden Park Drive  
6 months trial – March to September 2017  
Report to Council late 2017





# Parking Fees and Charges – 2017-18

Additional revenue  
hypothesized into  
traffic and  
transport initiatives

The all day  
parking cap was  
removed  
(currently all day  
charge \$18)

As per Council  
resolution 28  
June 2016

Hourly parking  
rate will remain at  
\$3 /hr

The community  
was advised  
through an  
extensive  
communication  
plan

Effective July  
2017

# Byfield St Upgrade





# Shrimptons Creek Project



Elouera Reserve

# Connect Update





# Marketing of Macquarie Park

Smart Cities and Suburbs Program – joint application was submitted  
MQU, MPID and City of Ryde

Application proposed to deliver and support:

- Public (Free WiFi) ...Shrimptons Creek Corridor
- Internet of Things – open data sharing (traffic, air quality...)
- Hackathons to explore real world problems
  - Traffic congestion
  - Rail closure
  - How to benefit from The Internet of Things

# Marketing cont'd

- STEM Career for Women Event
- Get Connected Business Event
- Chinese Delegation – Update
- Community of Practice – Manufacturing- update
- Think Space Optus – Shrimptons Creek Corridor.



# General Business

- Taxis in Macquarie Park (Penny Dillon)
- Next Meeting – date to be confirmed