



City of Ryde Mayor Clr Jordan Lane and Clr Sophie Lara-Watson checking out the Boronia Park mural

NEW MURAL BRIGHTENS UP BORONIA PARK

I was so pleased to pop down to Boronia Park last week to check out the new mural that has brightened up the village.

Designed and installed by Sydney-based illustrator, artist and muralist Lydia Morgan (AKA Squid Morgan), the mural is the brainchild of the Beautiful Boronia Working Group, which was established by Hunters Hill Council to work with the local businesses and community to identify and implement placemaking opportunities in Boronia Park. The Working Group comprised representatives from both Hunters Hill Council and City of Ryde, as well as local business and community representatives.

The Working Group expressed a desire for a public art project in the centre to represent themes of 'village', 'love' and 'creativity' and this mural certainly achieves that.

Find out more and view images at www.ryde.nsw.gov.au/boroniaparkmural

SPRING GARDEN ENTRIES CLOSING SOON

Don't forget to get your entries in for this year's Spring Garden Competition - entries close next Wednesday 31 August.

With 10 different categories to suit every size garden it's the perfect chance to showcase the amazing spaces created by individuals and organisations in our City.

Judging is based on three main factors – maintenance, design and

intent – and all entrants will be invited to attend a Gala Presentation Evening for the announcement of the 2022 Spring Garden Competition winners.

Find out more and enter now at www.ryde.nsw.gov.au/gardencomp

WORKSPACE WEEK

Workspace Week (22-28 August) is a community health initiative aimed at minimising injuries to the hundreds-of-thousands of Australians now working from home following years of lockdowns and the ongoing COVID-19 health risk.

With 42 percent of Australians now working and studying from home, and new data revealing an alarming number of Australians are putting their health at risk due to home workspaces not being set up correctly, Workspace Week aims to improve the health and wellbeing of Australians by educating them about the importance of an ergonomic workspace and postural correctness when working at home or in any other location.

I encourage you to visit www.workspaceweek.org.au for resources and information to help ensure a safer workspace.

Sincerely,



Clr Jordan Lane
Mayor

Phone 9952 8222
mayor@ryde.nsw.gov.au

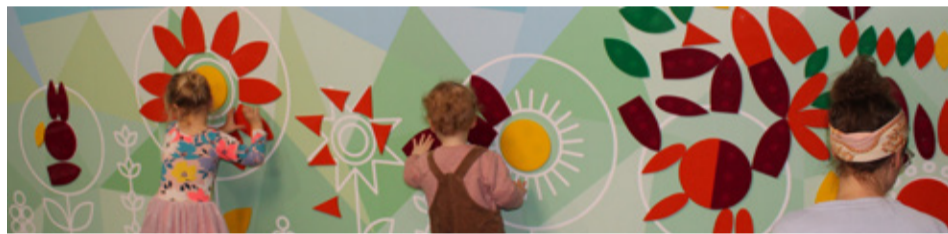


DEVELOPMENT APPLICATIONS RECEIVED & DETERMINED

For full details of the development applications received and determined visit www.ryde.nsw.gov.au/eServices

Received between 11 and 17 August 2022			
LDA2022/0241	2 Cave Ave NORTH RYDE	LDA2022/0239 213 Vimiera Rd MARSFIELD	
LDA2022/0247	17B Dora St MARSFIELD	MOD2022/0151 54 Trelawney St DENISTONE	
LDA2022/0252	37 Kuppia Rd RYDE	Determined between 11 and 17 August 2022	
LDA2022/0240	350 Pittwater Rd NORTH RYDE	LDA2022/0003 396 Lane Cove Rd MACQUARIE PARK	
LDA2022/0244	14 Frances Rd PUTNEY	LDA2022/0119 26 David Ave NORTH RYDE	
LDA2022/0245	17 Gilda St NORTH RYDE	LDA2022/0171 44 Greene Ave RYDE	
LDA2022/0246	436-484 Victoria Rd GLADESVILLE	MOD2022/0120 15 Smith St RYDE	
LDA2022/0248	24 Tennyson Rd GLADESVILLE	LDA2022/0182 27 Gilda St NORTH RYDE	
LDA2022/0249	25 Kennedy St GLADESVILLE	LDA2021/0296 3 Porter St & 105 Church St RYDE	
LDA2022/0250	2 Joy St GLADESVILLE	LDA2022/0024 1 Coronation Ave EASTWOOD	
LDA2022/0251	16 Lyndhurst St GLADESVILLE	LDA2022/0222 471 Blaxland Rd DENISTONE EAST	
MOD2022/0149	28 Small St PUTNEY	MOD2022/0126 6-8 Miriam Rd WEST RYDE	
MOD2022/0150	6 Frederick St RYDE		
MOD2022/0152	6 Gerard St GLADESVILLE		

LIBRARY NEWS



TOY LIBRARY AT NORTH RYDE LIBRARY

Visit our Toy Library located at North Ryde Library for a great variety of fun educational toys and puzzles. Toys in our collection are selected for those of developmental ages between 0 - 7 years, but most can be used by borrowers of all ages and abilities.

The Toy Library also hosts our interactive wall which was designed to provide creative play to those who use the Toy Library and provides a unique and engaging experience between caregivers and children or other persons in care.

Toys are fantastic tools for engaging the senses and stimulate the brain, and are great for young children as well as people of any age or ability.

For more details go to www.ryde.nsw.gov.au/ToyLibrary

HAVE YOUR SAY

OPEN COMMUNITY CONSULTATIONS

You are invited to have your say about documents, projects and proposals that are currently on public exhibition, or provide feedback on services and concerns that affect the community.

- Planning Proposal – Housekeeping Review 2022 (Closing 29 August 2022)
- Planning Proposal – 22 Winbourne Street, West Ryde (Closing 29 August 2022)
- Pearson Street, Gladesville - Proposal to install 'No Parking' Zones (Closing 31 August 2022)
- Proposal to re-establish/establish Alcohol Free Zones in City of Ryde (Closing 4 September 2022)
- Transport for NSW | Macquarie Park Precinct & Bus Interchange Upgrade (Closing 8 September 2022)
- Proposed Classification of Land - 40 Punt Road, Gladesville (Closing 18 September 2022)
- Licence to North Ryde Community Preschool, of part of Yamble Reserve (Closing 21 September 2022)
- Proposed closure of part of Blenheim Road, North Ryde (Closing 9 October 2022)
- Dragon Boat Club – Boat Storage Trial (Closing 11 December 2022)

Want to find out more?

To find out more about one of the above projects or for information on how to provide feedback, please visit www.ryde.nsw.gov.au/haveyoursay or call Customer Service on 9952 8222.