

ITEM (A): CULLODEN ROAD, MARSFIELD
SUBJECT: FORMALISE PARALLEL PARKING

ELECTORATE: RYDE
WARD: WEST WARD
ROAD CLASS: NON-CLASSIFIED

Traffic Committee Members are required to advise whether they have any pecuniary or non-pecuniary interest about the item discussed below.

PROPOSAL

Council is reconstructing the road on the eastern side of Culloden Road, Marsfield between Epping Road and Gymnasium Road (approximately 600 metre long). This is to provide a footpath and vertical kerb. Part of this section contains an informal perpendicular parking area that will no longer be accessible over the new vertical kerb.

As such it is intended to convert the current informal perpendicular parking to standard parallel parking, with the same time restriction (2P 7am-7pm Mon-Fri).



Figure 1: Location Map

DISCUSSION

The eastern side of Culloden Road along the boundary of Macquarie University is currently an unpaved road shoulder where vehicles have been parking in informal perpendicular parking zone (figure 2). This was possible as vehicles were able to enter the verge due to the existence of unpaved shoulder. As this area will be reconstructed with a standard vertical kerb, vehicle will no longer be able to park perpendicularly.



Figure 2: Current parking conditions

The provision of vertical kerb and a footpath along this section of Culloden Road will improve drainage, parking and pedestrian accessibility.

CONSULTATION

This is a construction project with significant benefits to the community, as such this will be a notification of works rather than a consultation. Residents on the western side of Culloden Road will be notified prior to implementation.

RECOMMENDATION

The Ryde Traffic Committee recommends that:

- a) The existing informal 2P 7am-7pm Mon-Fri perpendicular (90°) parking on the eastern side of Culloden Road be replaced with 2P 7am-7pm Mon-Fri, parallel parking where road width and statutory No Stopping permits.

- b) The parallel parking spaces be defined as marked parking bays with 'Park in Bays Only' signage installed to improve enforceability.

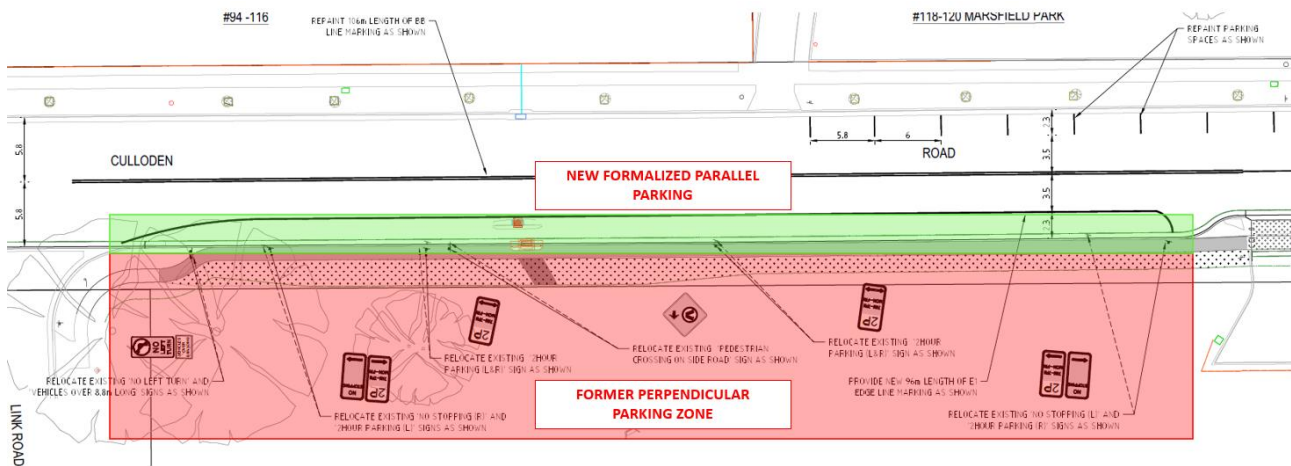


Figure 3: New kerb alignment with footpath



Figure 4: Proposed works overview

ITEM (B): **MCGOWAN STREET, PUTNEY**

SUBJECT: **NO PARKING**

ELECTORATE: LANE COVE

WARD: EAST

ROAD CLASS: NON-CLASSIFIED

Traffic Committee Members are required to advise whether they have any pecuniary or non-pecuniary interest about the item discussed below.

PROPOSAL

Council is proposing to install Kerb and Gutter on the western side of McGowan Street, Putney. This will widen the carriageway to 6.5m along the length of the street.

A 126-metre-long 'NO PARKING' zone will be installed on the western side of McGowan Street, between the property boundary of 6 Putney parade and 68 Pellisier Road, Putney.

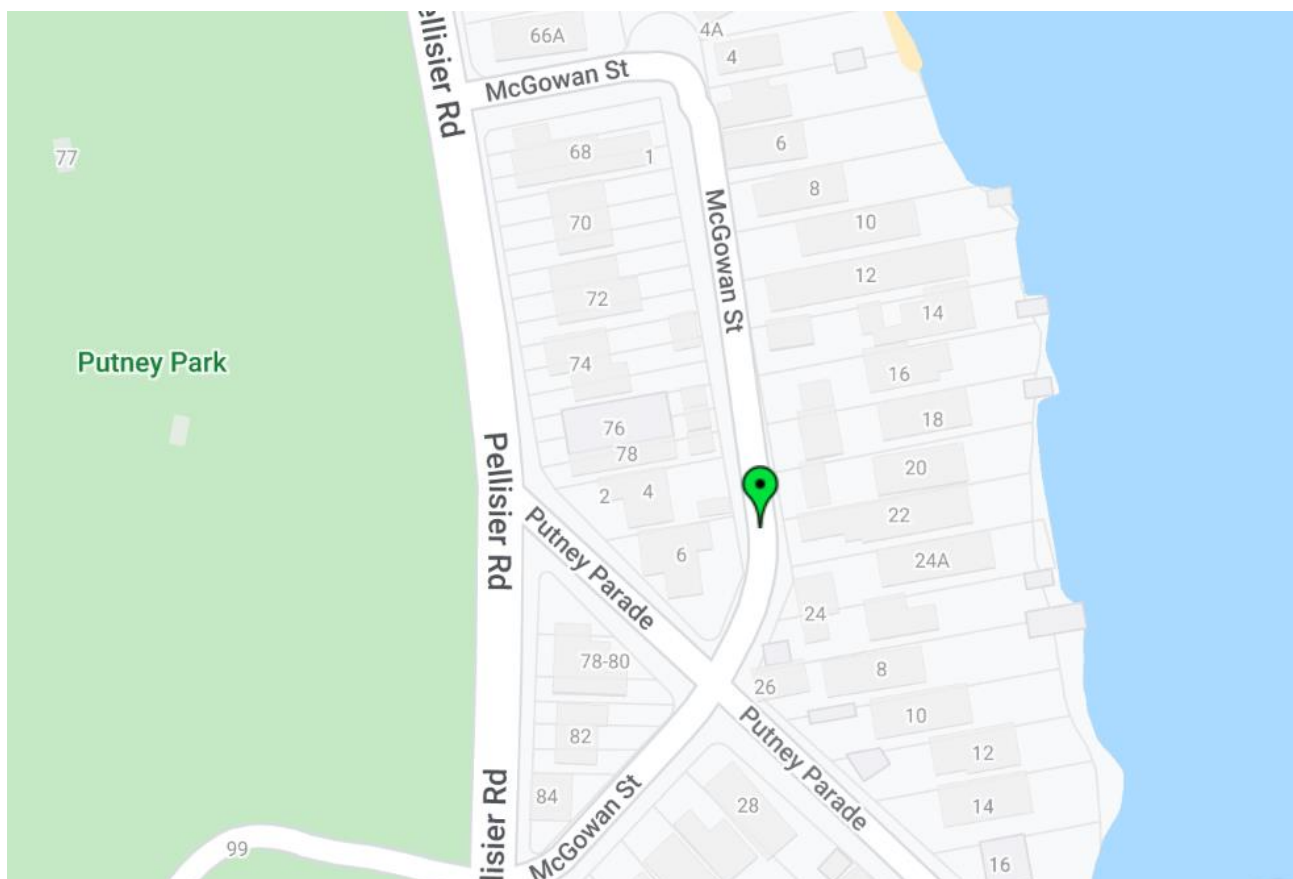


Figure 1: Location Plan

DISCUSSION

McGowan Street is a narrow street (4.7m – 5.2m) with steep grades, which discourages residents from parking along its western side. Whilst there are no formal restrictions parking does not occur on this section.

Providing kerb and gutter in this section, combined with the slightly wider carriageway may create a perception that this area is available for parking. Council intends to pre-empt this by installing 126 metres of 'NO PARKING' zone along the western side of McGowan Street between Putney Parade and the rear of 68 Pellisier road, Putney.

This does not represent the removal of parking from a residential area but rather is providing guidance for the effective utilisation of the area.

CONSULTATION

The residents will be notified of the proposed works at least 2 weeks prior start of construction. Notification flyers promoting community consultation and response will be distributed to all properties along McGowan Street.

RECOMMENDATION

The Ryde Traffic Committee recommends that:

- a) A 126-metre-long 'NO PARKING' zone be installed on the western side of McGowan Street, between the property boundary of 6 Putney parade and 68 Pellisier Road, Putney.

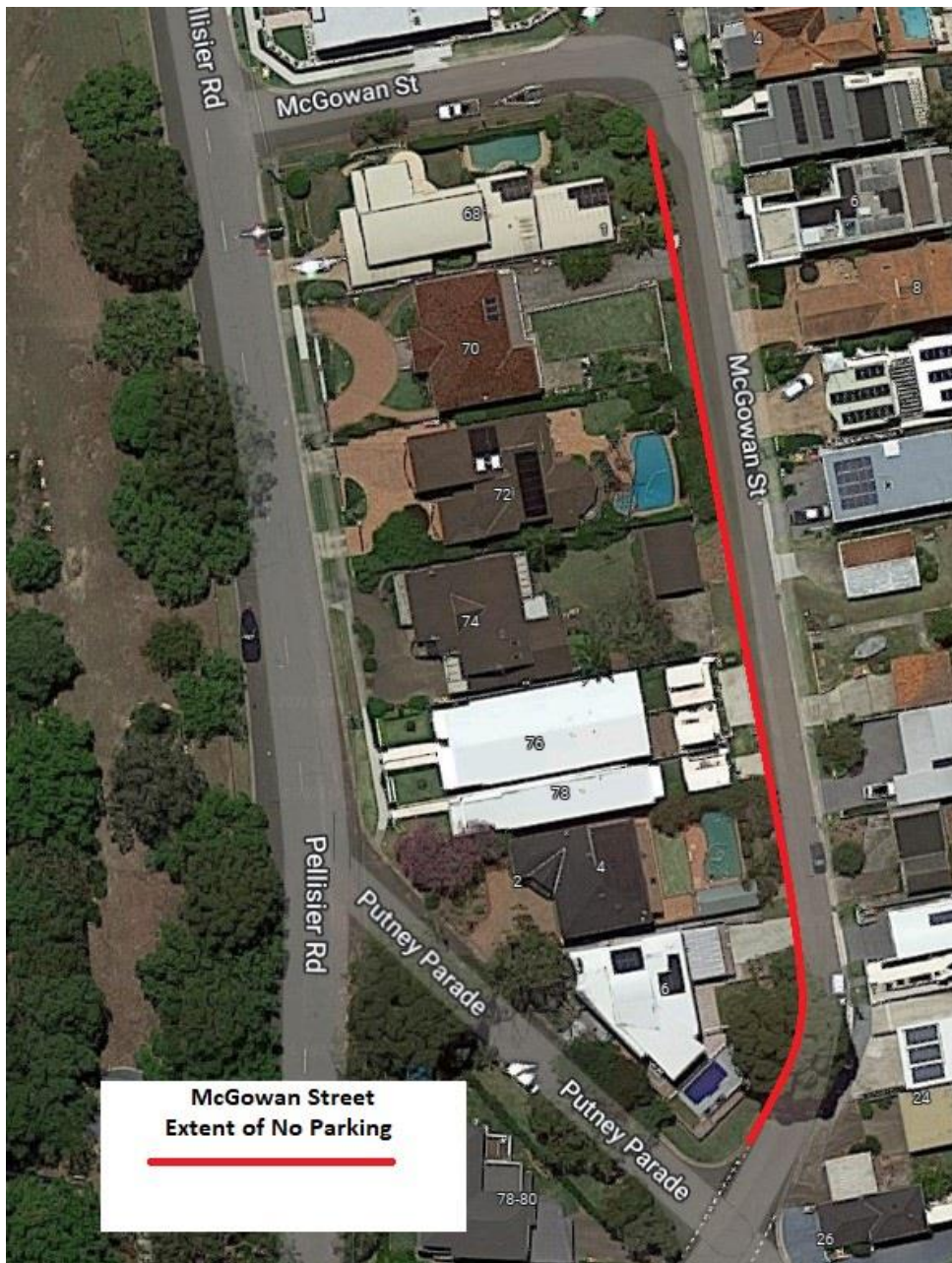


Figure 2: Proposed No Parking zone in McGowan St, Putney

ITEM (C): HILLVIEW LANE, EASTWOOD
SUBJECT: REMOVAL OF LOADING ZONE AT THE REAR OF 127 TO 133 ROWE STREET

ELECTORATE: RYDE
WARD: CENTRAL
ROAD CLASS: NON-CLASSIFIED

Traffic Committee Members are required to advise whether they have any pecuniary or non-pecuniary interest with regards to the item discussed below.

PROPOSAL

Council is proposing to remove the existing Loading Zone on the southern side of Hillview Lane, between Coolgun Lane and West Parade, at the rear of properties 127 to 133 Rowe Street, Eastwood.



Figure 1: Location map.

DISCUSSION

Hillview Lane is one-way laneway located in the town centre of Eastwood surrounded by commercial businesses. The laneway is approximately 4 metre wide between Coolgun Lane and West Parade and 5.2 metre wide between Lakeside Road and Coolgun lane. There are currently three loading zones on Hillview Lane and two on Coolgun Lane servicing the businesses in that area.



Figure 2: Loading zones on Hillview Lane and Coolgun Lane

Council has received feedback from the community that the existing Loading Zone at the rear of 127 & 133 Rowe Street, is encroaching onto the intersection of Coolgun Lane and Hillview Lane. When vehicles occupy the Loading Zone, the movement of vehicles on Coolgun Lane and Hillview Lane is obstructed, as other vehicles cannot pass resulting in long delays and traffic congestion. The regular use of the loading zone is also restricting the rear access/driveway to 127-133 Rowe Street. Refer to Figure 3.

The removal of the Loading Zone will improve traffic flow conditions and laneway access.



Figure 3: Loading zone on Hillview Lane near the intersection of Coolgun Lane

CONSULTATION

A “Have Your Say” consultation was carried out for two weeks between 28th March 2022 to 10th April 2022. Letters were distributed to local residents and businesses as shown in Figure 4 to determine the level of support for the proposal.



Figure 4: Community Engagement Distribution Map

Two (2) responses were received out of thirty-two (32) surveys distributed, both in favour of the proposal.

RECOMMENDATION

The Ryde Traffic Committee recommends that:

- a) The existing Loading Zone on the southern side of Hillview Lane at the rear of properties 127 to 133 Rowe Street, Eastwood be removed and replaced with No Stopping.

ITEM (D): 17 BUFFALO ROAD, GLADESVILLE
SUBJECT: FORMALISATION OF MAIL ZONE

ELECTORATE: RYDE
WARD: CENTRAL
ROAD CLASS: NON-CLASSIFIED

Traffic Committee Members are required to advise whether they have any pecuniary or non-pecuniary interest with regards to the item discussed below.

PROPOSAL

Council is proposing to formalise the existing Mail Zone (5.8 metre long) in front of 17 Buffalo Road, Gladesville to ensure access during Australia Post operational hours.



Figure 1: Location map

DISCUSSION

Council's Rangers Team and Australia Post have reported several instances of vehicles parking in front of the mailbox preventing mail pickup during business hours at the property frontage of 17 Buffalo Road, Gladesville.

To address this issue, it is proposed that 5.8 metre long "MAIL ZONE, 10AM - 5PM, MON-FRI" signage be installed to designate this area.



Figure 2: Mail zone outside of 17 Buffalo Road Gladesville.

CONSULTATION

Australia Post was consulted regarding the operational hours. Public consultation was not required as the mailbox is an existing infrastructure. However, notification letters will be issued prior to the installation of Mail Zone signs.

RECOMMENDATION

The Ryde Traffic Committee recommends that:

- a) The existing Mail Zone be formalised by installing 5.8 metre long “MAIL ZONE, 10AM – 5PM, MON-FRI” at the property frontage of 17 Buffalo Road, Gladesville.

ITEM (E): **ROAD SAFETY UPDATE**
SUBJECT: **ROAD SAFETY PROGRAMS**

ELECTORATE: RYDE / LANE COVE
WARD: ALL

Traffic Committee Members are required to advise whether they have any pecuniary or non-pecuniary interest with regards to the items discussed below.

TRANSPORT FOR NEW SOUTH WALES (TfNSW) FUNDED PROGRAMS

Safer Driving for Seniors workshop was held on 31 April with 24 attendees. Various information and resources distributed.

COUNCIL FUNDED PROGRAMS

Youth Week

Car maintenance workshop run by Galmatic with 16 participants was held on 12 April.

School Holiday Learn to Ride Program

Learn to Ride and Cycle Skills for Kids classes were held on 22 April. 30 participants in the morning Learn to Ride class, but only five attended in the afternoon class due to poor weather. Will look at making this program a regular school holiday event to support active travel to school programs.

School Zone Safety Program

- New footpath flagged for Cooney Street to improve access to Holy Spirit Primary School and enable removal of non-compliant Children's Crossing and relocation of Kiss & Drop zone to Marilyn Street.
- Term 2 School Zone Safety Newsletter has been distributed to all primary schools. This is a joint program with Lane Cove and Hornsby Shire Councils. See below (Figures 1 & 2).
- Working with Meadowbank Public School on school zone safety resources created by students – printing postcards, stickers and fence banners that will be used in safety program rolling out over coming weeks.
- Council's Transport team, Parking Enforcement team and Ryde Police Area Command (PAC) are currently reviewing traffic, parking and safety around the new Meadowbank Employment and Education Precinct now that the new site has

opened. A number of proposed changes to improve conditions will be discussed at a meeting with School Infrastructure NSW in early May.

‘What If?’ Young driver safety program

- Program is a partnership between City of Ryde, Hornsby Council, Ryde PAC and Eastwood Gladesville Liquor Accord. Targets four high schools per year to deliver a morning of presentations, activities and demonstrations around alcohol awareness and road safety for young drivers. First school participating in the 2022 program is Ryde Secondary College on 20 May.

Upcoming events

- **Walk Safely to School Day - 20 May** – encouraging schools to be involved and register for the breakfast packages offered by NSW Health.
- **National Road Safety Week - 15–22 May:**
 - o Kidsafe and Transurban are partnering with local Councils to fund a Child Car Seat Checking Day during National Road Safety Week. City of Ryde’s will be held on 19 May at Blenheim Park.
 - o Council will promote messaging on social media and in staff newsletters.

RECOMMENDATION

The Ryde Traffic Committee recommends that:

- a) The Road Safety report be received and noted.



Term 2 - 2022

Welcome to the Term 2 School Zone Road Safety Newsletter. In this edition we remind drivers about the rules for the No Parking zone at your school. Using these zones correctly provides a safer and more efficient resource for all drivers.

Do you know how to use the No Parking zone at your school?

Most schools have a No Parking zone at the front or near it. These zones are designed for drivers to stop for no more than two minutes to drop-off or pick-up a passenger. The driver must remain with their vehicle at all times. **NO PARKING ZONES ARE NOT DESIGNED FOR DRIVERS TO SIT AT THEIR LEISURE UNTIL THEIR CHILD APPEARS.**



- If your child(ren) is being picked up from the No Parking zone outside the school, only stop there when they are ready to enter your vehicle. If they are not waiting within the zone, move away and come back later. This will free the zone up for other drivers whose passengers are waiting.
- If your school runs an organised pick-up program from the No Parking zone at the front of the school, follow the instructions issued by the school executive.
- When dropping your child at school within the No Parking zone, ensure you have given them a hug and kiss at home, so the child can leave the vehicle independently, to minimise your time within the zone.

Walk Safety to School Day - Friday 20 May 2022

As you are aware, walking to school has many benefits for students, parents and the surrounding community. Walking with your child will help them develop vital road crossing skills and is an opportunity to teach them about road safety and independence. It also gives you both exercise, gets you out of the car and away from the traffic congestion, reducing air pollution and car dependency.



On Friday 20 May 2022, all students across Australia, are being asked to participate in National Walk Safely to School Day, in conjunction with their school, or independently. For further information visit: walk.com.au.



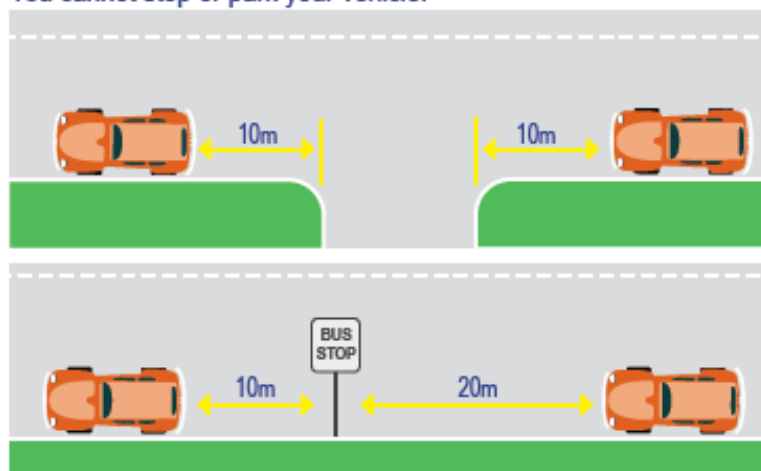
Figure 1

Parking Rules

Please park safely and legally on the streets around your school. Park legally so you do not incur parking fines and demerit points. Council's Traffic Compliance Officers and NSW Police enforce parking around schools. If you park contrary to the road rules you will be fined!

No Parking Zone <ul style="list-style-type: none"> Drivers may stop in this zone to drop off or pick up passengers or goods for a maximum of 2 minutes. The driver MUST remain in or within 3 metres of the vehicle at all times. The vehicle must not be left unattended. If times of operation are shown on the sign, the restriction only applies during the times shown. No Parking zones can also be used to drop off and pick up children. 	 	No Stopping Zone <ul style="list-style-type: none"> Stopping is not permitted at any time. If times of operation are shown on the sign, the restriction only applies during the times shown. 	
		Double Parking <ul style="list-style-type: none"> You must not stop on the road adjacent to another vehicle at any time, even to drop off or pick up passengers. 	
<p>PENALTIES & DEMERIT POINTS APPLY *</p>			

You cannot stop or park your vehicle:



Within 10m of an intersecting road at an intersection without traffic lights (20m with traffic lights), unless a sign states you can park there (see image at left).

PENALTIES & DEMERIT POINTS APPLY *

Within 20m before and 10m after a bus stop (see image at left)

PENALTIES & DEMERIT POINTS APPLY *

Parallel parking

You must park in the same direction of travel and parallel and as close to the kerb as possible.



You can **NOT** park across driveways or pedestrian kerb ramps. A vehicle can be parked up to the wings on the driveways or ramp (see image)

PENALTIES & DEMERIT POINTS APPLY *

* Penalty amounts are substantially higher for offences committed in School Zones. All penalties are set by the NSW State Government.

For a list of all school zone driving and parking offences in New South Wales visit:

<https://roads-waterways.transport.nsw.gov.au/documents/roads/safety-rules/demerits-school.pdf>

Figure 2

ITEM (F): BRENDON STREET AND FLINDERS ROAD, NORTH RYDE
SUBJECT: PARKING AND ACCESS

ELECTORATE: RYDE
 WARD: CENTRAL
 ROAD CLASS: NON-CLASSIFIED

Traffic Committee Members are required to advise whether they have any pecuniary or non-pecuniary interest with regards to the item discussed below.

PROPOSAL

Council is proposing to formalise No Stopping signage, install a section of No Parking and paint the Give Way hold lines at the intersections of Brendon Street with Flinders Road and Cave Avenue, North Ryde.

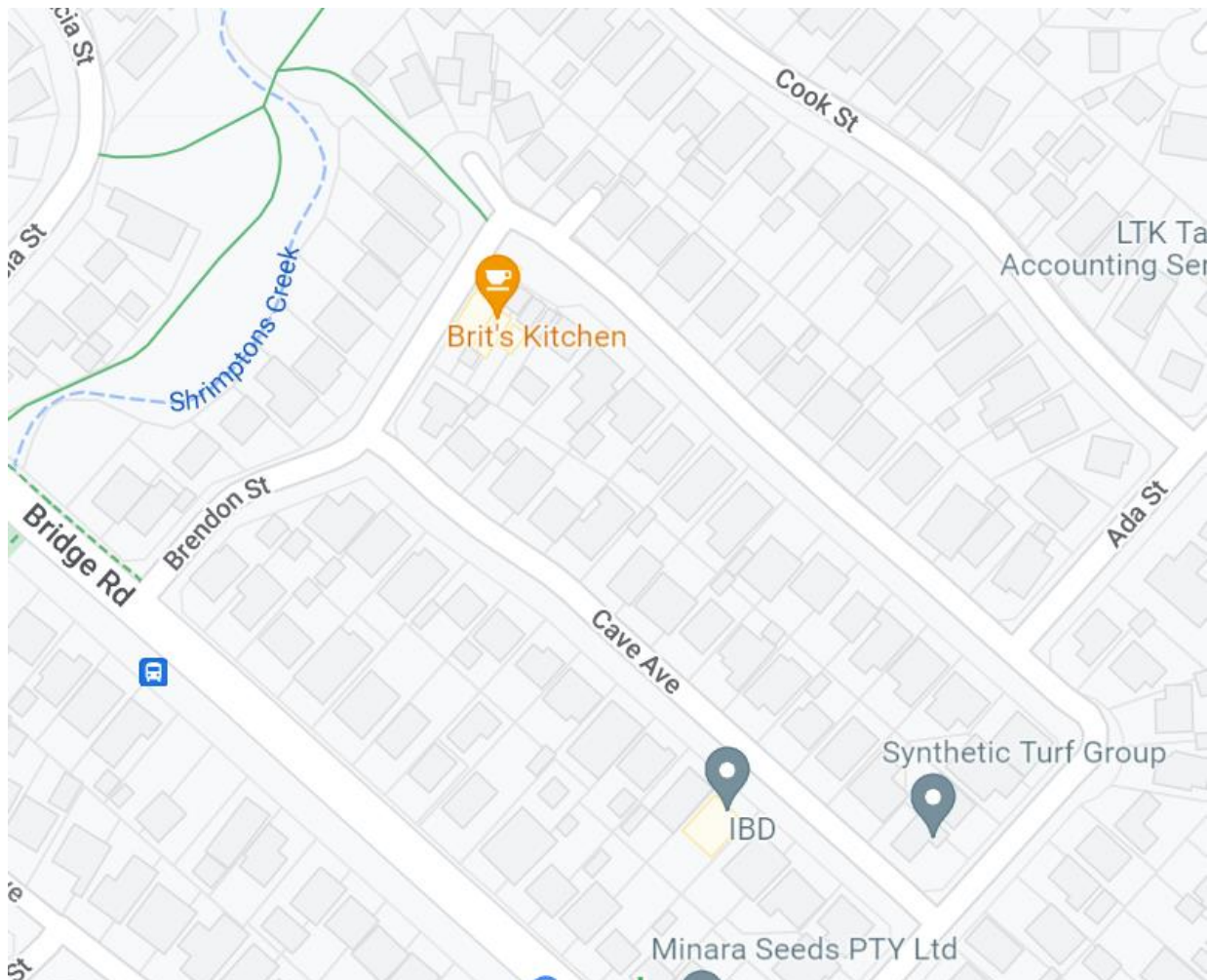


Figure 1: Location map

DISCUSSION

Council have been contacted by residents of Brendon Street, North Ryde regarding traffic and parking issues in their street.



Figure 2: Overview showing Signage and linemarking changes

The primary nature of the concern is with access to residential driveways caused by vehicles parking on the western side of Brendon Street. This issue is associated with increased parking demand in the area attributed to increased utilisation of the commercial area on Flinders Road.

Council's Urban Strategy department have also received comments regarding this issue and recommended that a review of the parking arrangements be conducted.

CONSULTATION

Aside from the No Parking zone, this is to reinforce the existing conditions and Road Rules. The section of No Parking is considered to be a safety issue. The only affected

property 5 Brendon Street is currently under construction, thus consultation cannot be carried out.

RECOMMENDATION

The Ryde Traffic Committee recommends that:

- a) Statutory 10 metre No Stopping signs be installed at the intersections of Brendon Street with Flinders Road and Cave Avenue, North Ryde.
- b) Give Way hold lines (TB) and associated signs be installed at the intersections of Brendon Street with Flinders Road and Cave Avenue, North Ryde.
- c) A 13-metre-long section of No Parking be installed on the western side of Brendon Street, opposite its intersection with Cave Avenue.