

ATTACHMENTS FOR: AGENDA NO. 6/21 WORKS AND COMMUNITY COMMITTEE MEETING

Meeting Date: Tuesday 10 August 2021
Location: Online Audio Visual Meeting
Time: 6.00pm

ATTACHMENTS FOR WORKS AND COMMUNITY COMMITTEE

Item		Page
3	ADOPTION OF MAGDALA PARK MASTERPLAN	
Attachment 1	Magdala Park Masterplan Report for Council adoption - May 2021	1
Attachment 2	Magdala Park Masterplan for Council adoption - May 2021.....	57
Attachment 3	Magdala Park Draft Masterplan - Stage 2 Consultation Report - April 2021	58
Attachment 4	Magdala Park Draft Masterplan for Stage 2 Consultation - March 2021	79
Attachment 5	Magdala Park Draft Masterplan - Stage 1 Consultation Report - September 2020	80
Attachment 6	Magdala Park Road Reserve Closure Overlay - May 2021.....	101
Attachment 7	Magdala Park Proposed Land Transfer from NPWS to CoR - May 2021.....	102
Attachment 8	Magdala Park Existing Community Land Categorisation Overlay - May 2021	103
Attachment 9	Magdala Park Proposed Community Land Categorisation Overlay - May 2021	104

ITEM 3 (continued)

ATTACHMENT 1



place
design
group.

MAGDALA PARK, NORTH RYDE

MASTERPLAN REPORT FOR COUNCIL ADOPTION

May 2021

ITEM 3 (continued)

ATTACHMENT 1



Archalla
 6/2na
 South East Asia

Follow us on



placedesigngroup.com

Report title	Magdala Park Masterplan Report
Document number	2520040
Prepared for	City of Ryde
Authors	Matthew Diury; Steve Masters; Eileen Yang.
Revision number	04
Revision issue date	3 May 2021
Approved	Nick Ison
Reason for revision	For Council Adoption

Document History & Status

Rev.	Date	Description	Approved by
01	19.01.21	DRAFT	NI
02	26.02.21	DRAFT	NI
03	03.05.21	Draft for Council Adoption	NI

Disclaimer This report has been prepared in accordance with the scope of services described in the contract or agreement between Place Design Group Pty Ltd ACN 082 370068 and the Client. The report relies upon data, surveys, measurements and results taken at or under the particular times and conditions specified herein. Any findings, conclusions or recommendations only apply to the aforementioned circumstances and no greater reliance should be assumed or drawn by the Client. Furthermore, the report has been prepared solely for use by the Client and Place Design Group accepts no responsibility for its use by other parties.

ITEM 3 (continued)

ATTACHMENT 1

Contents	
1.0 Introduction & Context	4
1.1 Introduction	
1.2 Design Vision + Principles	
1.3 City of Ryde Community Context + Key Facts	
1.4 Key Challenges for City of Ryde Council	
1.5 Sports and Recreation Strategy	
2.0 Site Analysis	10
2.1 Site Context	
2.2 Site Context - Transport + Connections	
2.3 Existing Circulation + Access	
2.4 Current Layout + Uses	
2.5 Existing Site	
2.6 Opportunities + Constraints	
2.7 Analysis Overlay Image	
2.8 Selection of Community Feedback	
3.0 Masterplan	22
3.1 Overall Masterplan	
3.2 Magdala Park North	
3.3 Magdala Park South	
3.4 Perspective Views	
3.5 Design + Activation Strategy	
3.6 Circulation Strategy	
3.7 Lighting Strategy	
3.8 Signage and Wayfinding Strategy	
3.9 Climate Change and Resilience Planning	
3.10 Canopy Cover Calculations	
3.11 Planting Strategy	
3.12 Planting Palette	
3.13 Landscape Character Images	
3.14 Staging Strategy	
3.15 Site Elevation - AA	
3.16 Site Elevation - BB	
3.17 Site Elevation - CC	
4.0 Appendices	44
4.1 Strategic Documents	
4.2 Precedent Scale Comparison	
4.3 Site History	
4.4 Zoning / Land Ownership Plan	
4.5 Vegetation Communities	
4.6 Biodiversity Values Map	
4.7 SEPP Coastal Management	
4.8 Bush Fire Mapping	
4.9 Senior Baseball Field Layout Alternative	
4.10 Site Section AA - Senior Baseball Field Alternative	

ITEM 3 (continued)

ATTACHMENT 1



ITEM 3 (continued)

ATTACHMENT 1

1.1 Introduction

Place Design Group has been engaged by the City of Ryde (Council) to develop a Masterplan for Magdala Park that will incorporate sporting, active recreations and passive uses.

Magdala Park is 4.87 hectares in size and located within the suburb of North Ryde. It is bound to the north, south and west by Lane Cove National Park with the Lane Cove River forming the eastern boundary. The Park also has key linkages to bush tracks in the Lane Cove National Park, Buffalo Creek and Field of Mars Reserve while also including a section of the historic Great North Walk.

The goals of this Masterplan are to:

- Integrate the Park into their surrounding context,
- Improve the sporting, recreational and ecological functions of the Park,
- Identify improvement projects for Council so that the Park best services the future needs of the community,
- Make Magdala Park a sports hub for the City, provide facilities for other recreation pursuits and integrate the Park with the Lane Cove River and Lane Cove National Park,
- Demonstrate effective future provision, conservation, planning and development of facilities and services within the Park,

- Guide Council over the next 20 years on how the Park and the facilities and infrastructure will be improved and renovated with new facilities and uses introduced to provide a safe Park for the local community and visitors to Ryde to enjoy.
- Identify stages for implementation to allow for future inclusion in the Council's Delivery Plan.

This Masterplan will provide Council with the design guidelines and objectives for the future of the Park that incorporates the site's surrounding context, improves the sporting, recreation and ecological functions of the Park maximising it's potential for the local and broader community.



1.2 Design Vision + Principles

"An inclusive, activated sports destination for the Ryde community that takes advantage of it's natural surrounds."



An Inclusive Destination



Multi Sports Destination



Provide 'Connection to Country'



Improve Connections and Safety



Enhance the Natural Setting



Environmental Sustainability



Maximise the Site's Potential



Offer Passive Recreation



Identity and Sense of Place

ITEM 3 (continued)

ATTACHMENT 1

1.3 City of Ryde Community Context + Key Facts

Third oldest settlement in Sydney

116,302 residents in 2016

160,000 residents in 2031 = 38% increase

17,000 new dwellings by 2031

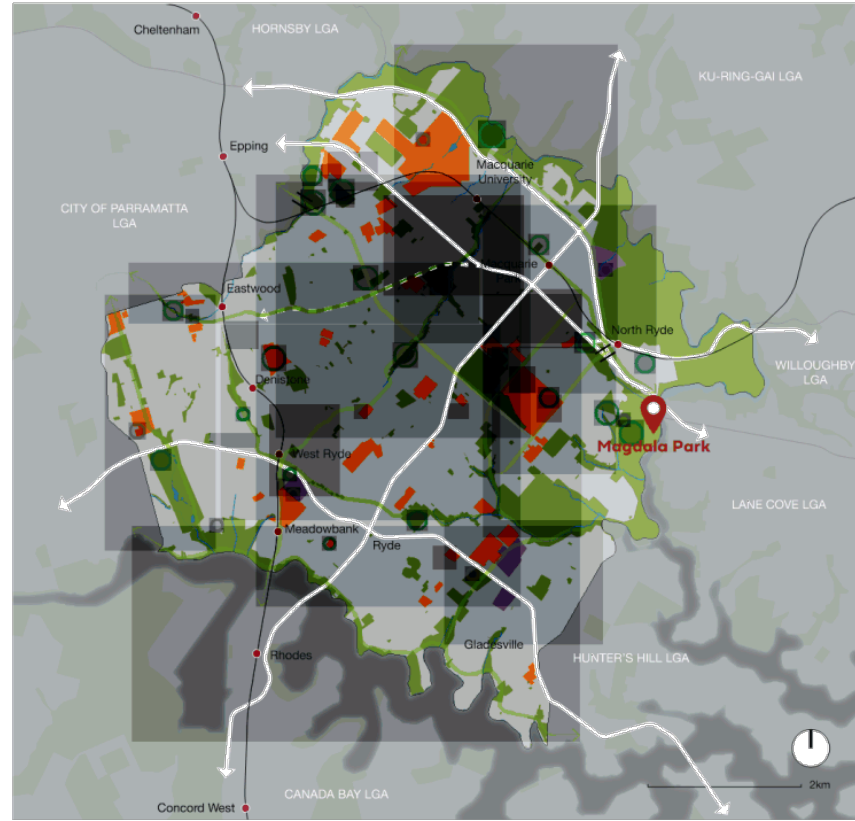
200ha of natural areas

60 playing fields

50% of City of Ryde's population were born overseas (2016)

42% speak a language other than English at home

70% of trips made by car



KEY

- Railway station
- Railway line
- Main road
- Green space
- Education / hospital
- Local industrial area
- Investigate new / expanded public recreation & open space opportunity
- Investigate new / expanded indoor recreation opportunity
- Investigate open space link
- Potential new bridge for cyclists / pedestrians

Existing City of Ryde Structure Plan

Source: Existing Structure Plan, Planning Ryde, Local Strategic Planning Statement (2020)

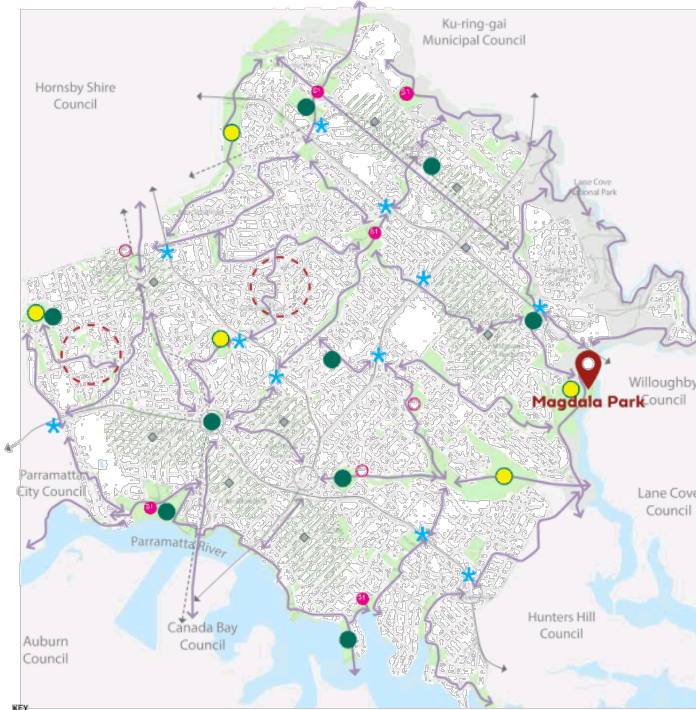
ITEM 3 (continued)

ATTACHMENT 1

1.4 Key Challenges for City of Ryde Council

- + Ensuring park design and planting strategies draw on local landscape character
- + Adapting to the stresses of climate change on open space
- + Balancing structured and unstructured recreation facilities and spaces
- + Providing 1,500m² of open space within a safe and direct walking distance from every residence – 200 metres for high-density areas and 400 metres for low/medium-density areas
- + Optimising access to open space and recreation facilities by walking and cycling
- + Conserving and enhancing native flora, fauna and habitats
- + Providing natural connections across the City of Ryde, linking with other adjoining local Council areas

Source: Planning Ryde, Local Strategic Planning Statement (2020)



KEY

● Major Centres - Existing And Proposed	★ Major Barrier/Reduction Targets (Walking/Cycling)
● Citywide Sports Hub/President-Regionals	▨ Local Open Space Deficit Areas Acquisition/Review Areas
Ⓜ Local 2-Sports Park - Suburb	→ Major Arterial Roads
● Primary Passive Parkland	→ Rail Lines
● Potential Backland Reserves	Ⓧ Future Local Reserve Acquisition Opportunity (Review Locations)
←→ Potential Reservoir/Charges (see Green Web and Green Grid)	Ⓧ Multiple Small Reserves (Evaluation/Review)

City of Ryde Open Space Structure Plan

Source: Integrated Open Space Plan (2012)

1.5 Sports and Recreation Strategy

Goal 1 - To Make the Most of What We Have

Goal 2 - Equitable Access for All

Goal 3 - We understand and respond to the needs of our Diverse Community

Goal 4 - Our Facilities are fit for purpose

Goal 5 - We provide inclusive and accessible sport and recreation

Goal 6 - Our community will be aware of our facilities and programs

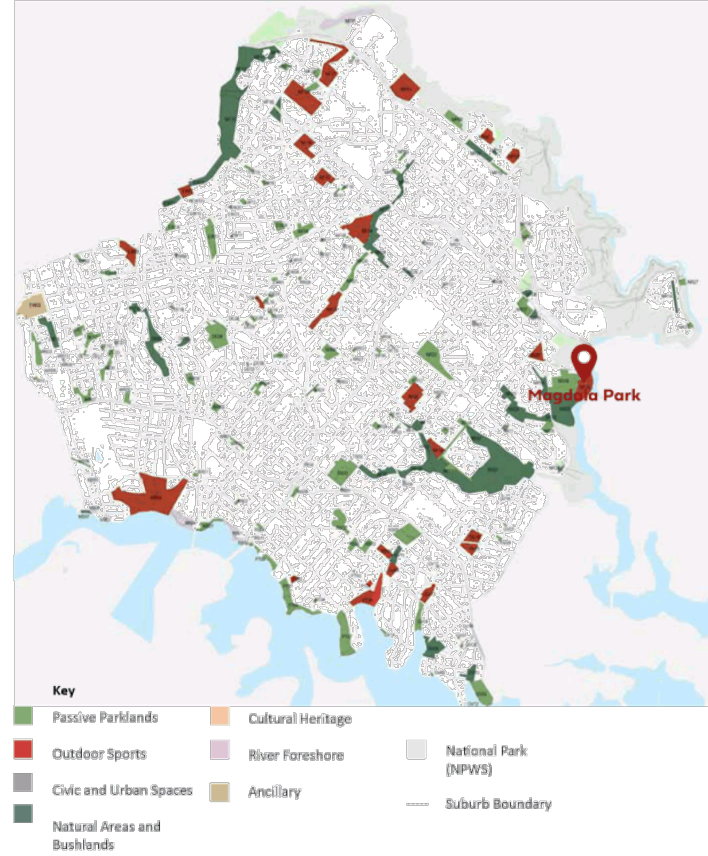
Goal 7 - Sustainable management of facilities and Sport

Magdala Park: 27 hours of use per week in Winter

City of Ryde Recreation Assets	Quantity
Soccer Pitches (Senior)	37
Soccer Pitches (Junior / Mini)	9
Baseball (Senior)	6
Baseball (Junior)	8

Recreation Asset	Participation Rates	2016	2021	2031
Baseball	0.4%	460	489	542
Running	9.1%	10,465	11,134	12,331
Soccer	6.5%	7,475	7,953	8,808
Walking (bush)	4.8%	5,520	5,873	6,504

Source: City of Ryde Sports and Recreations Strategy (2017)



Open Space Setting

Source: Integrated Open Space Plan (2012)

ITEM 3 (continued)

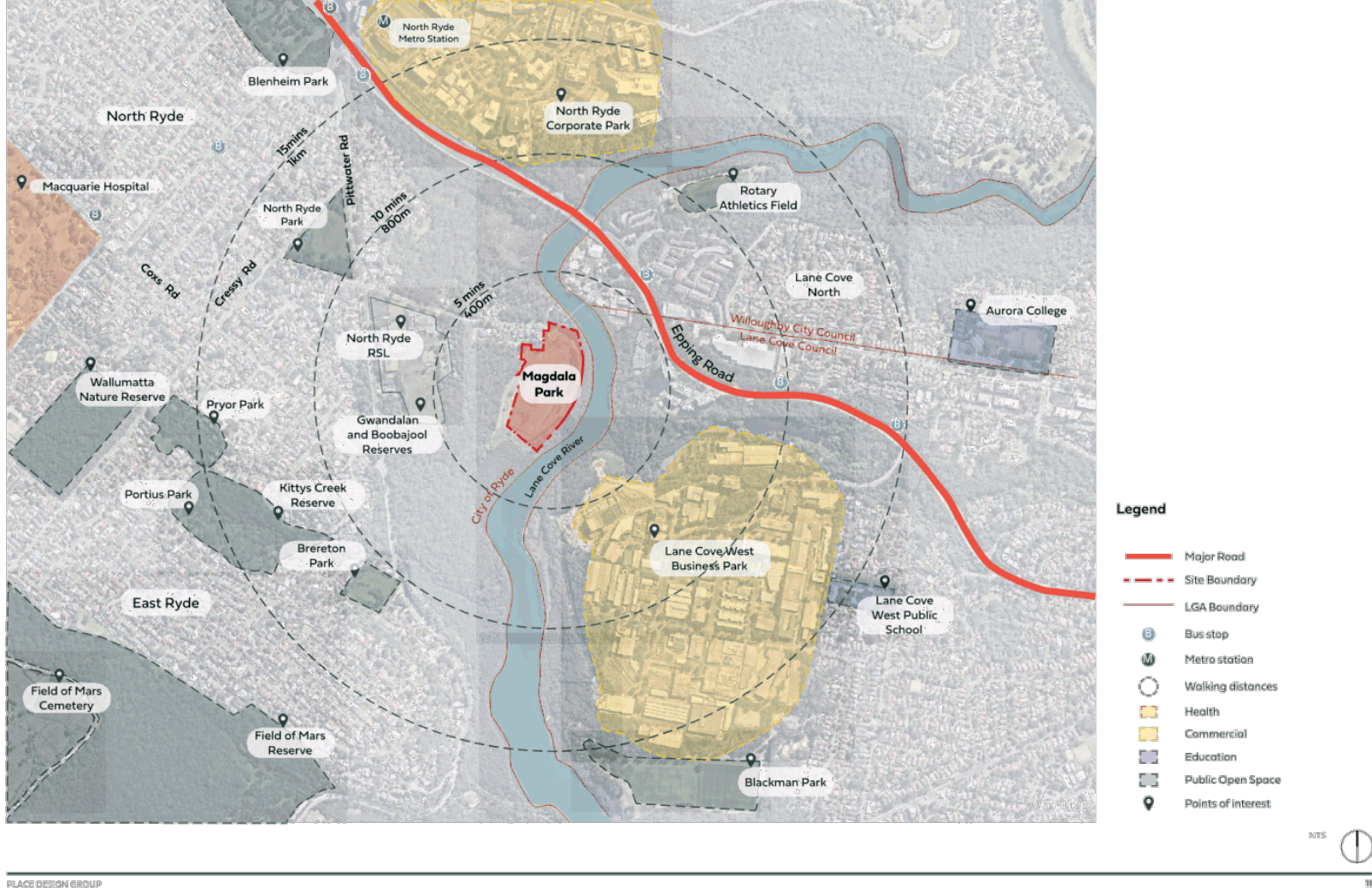
ATTACHMENT 1



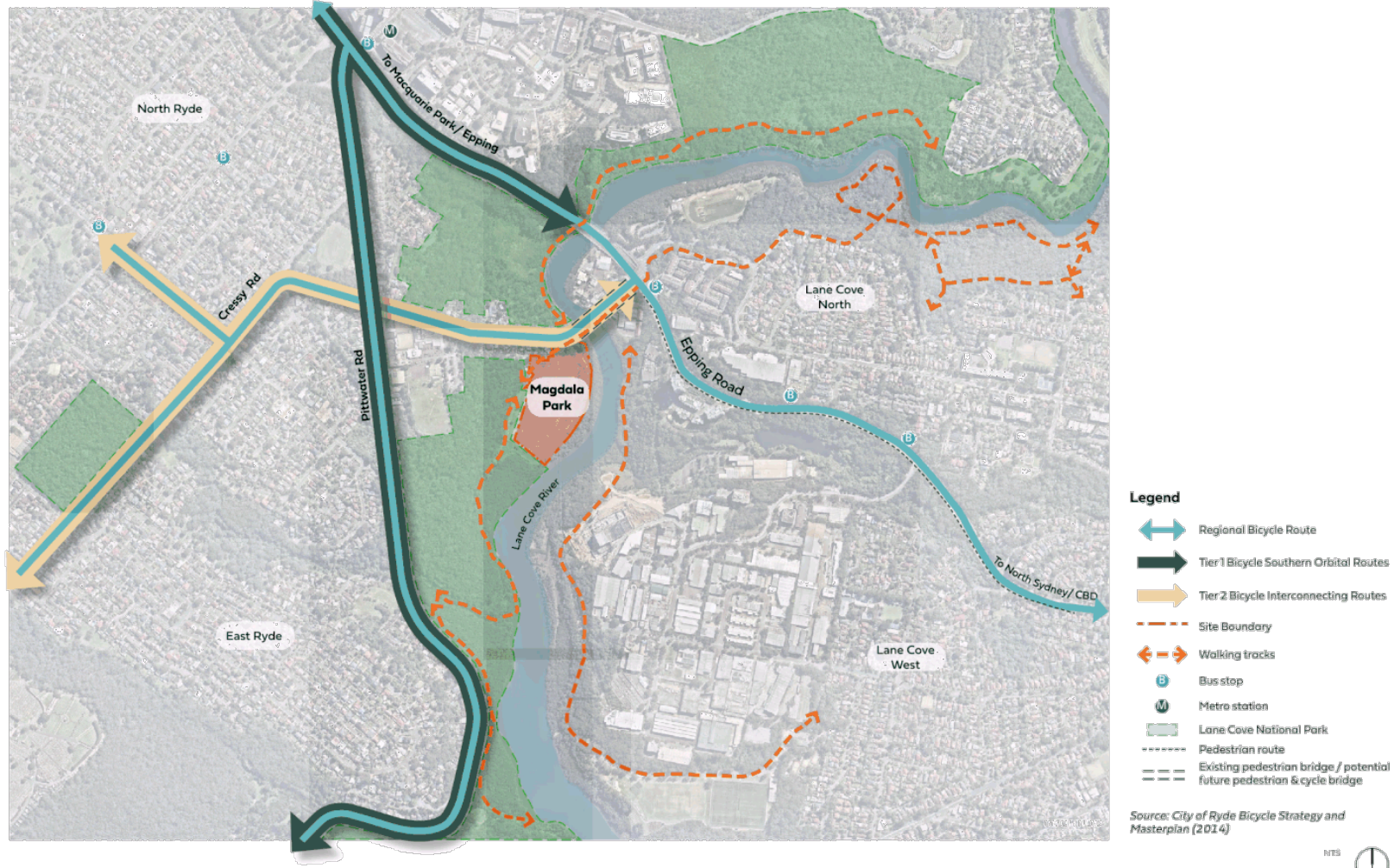
ITEM 3 (continued)

ATTACHMENT 1

2.1 Site Context



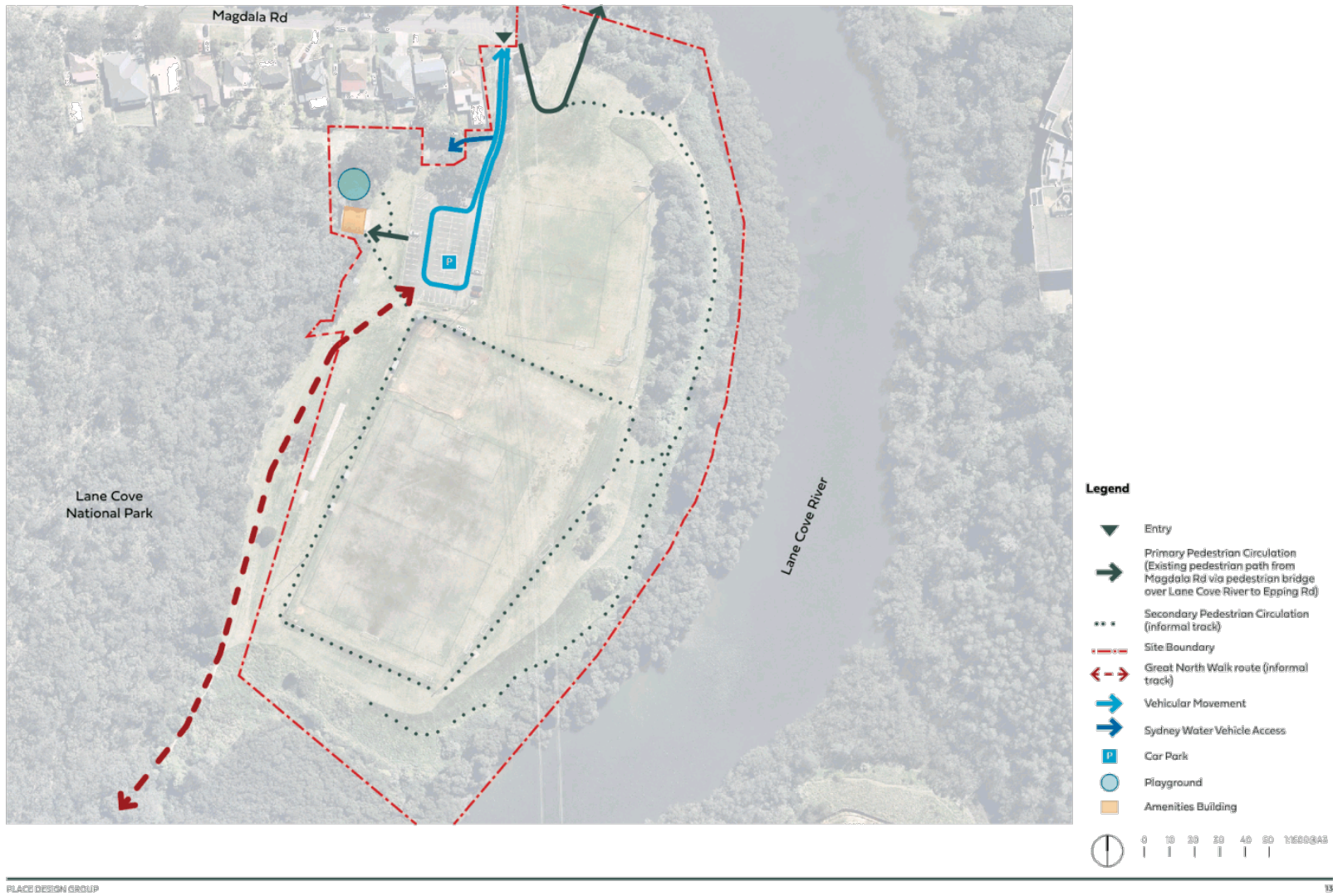
2.2 Site Context - Transport + Connections



ITEM 3 (continued)

ATTACHMENT 1

2.3 Existing Circulation + Access

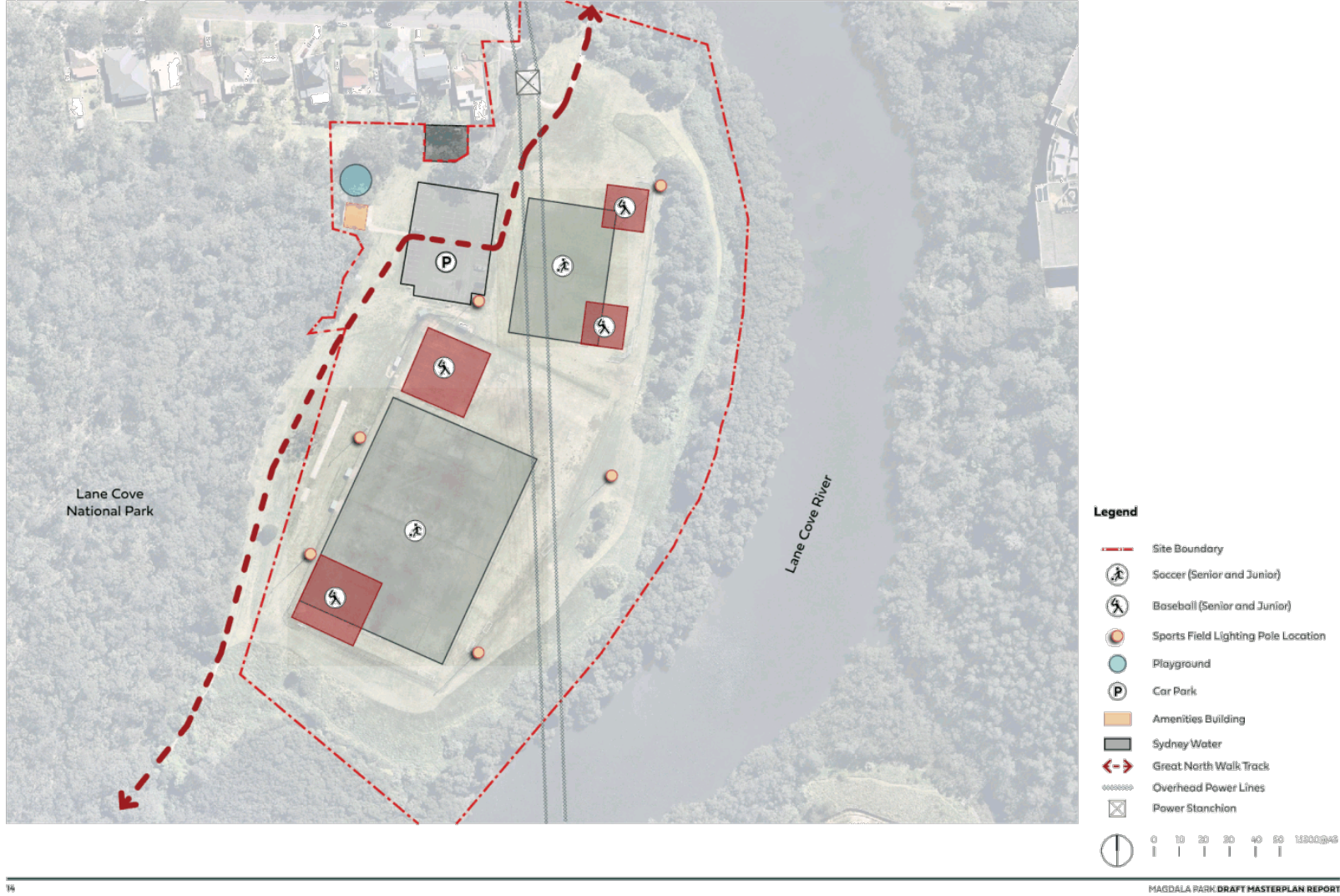


PLACE DESIGN GROUP

ITEM 3 (continued)

ATTACHMENT 1

2.4 Current Layout + Uses



ITEM 3 (continued)

ATTACHMENT 1

2.5 Existing Site



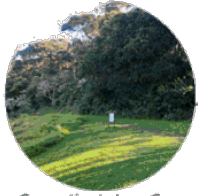
Existing playground



Existing amenities building



Existing car park



Connection to Lane Cove National Park



Pedestrian site entry



Junior sports field



Mangrove edge



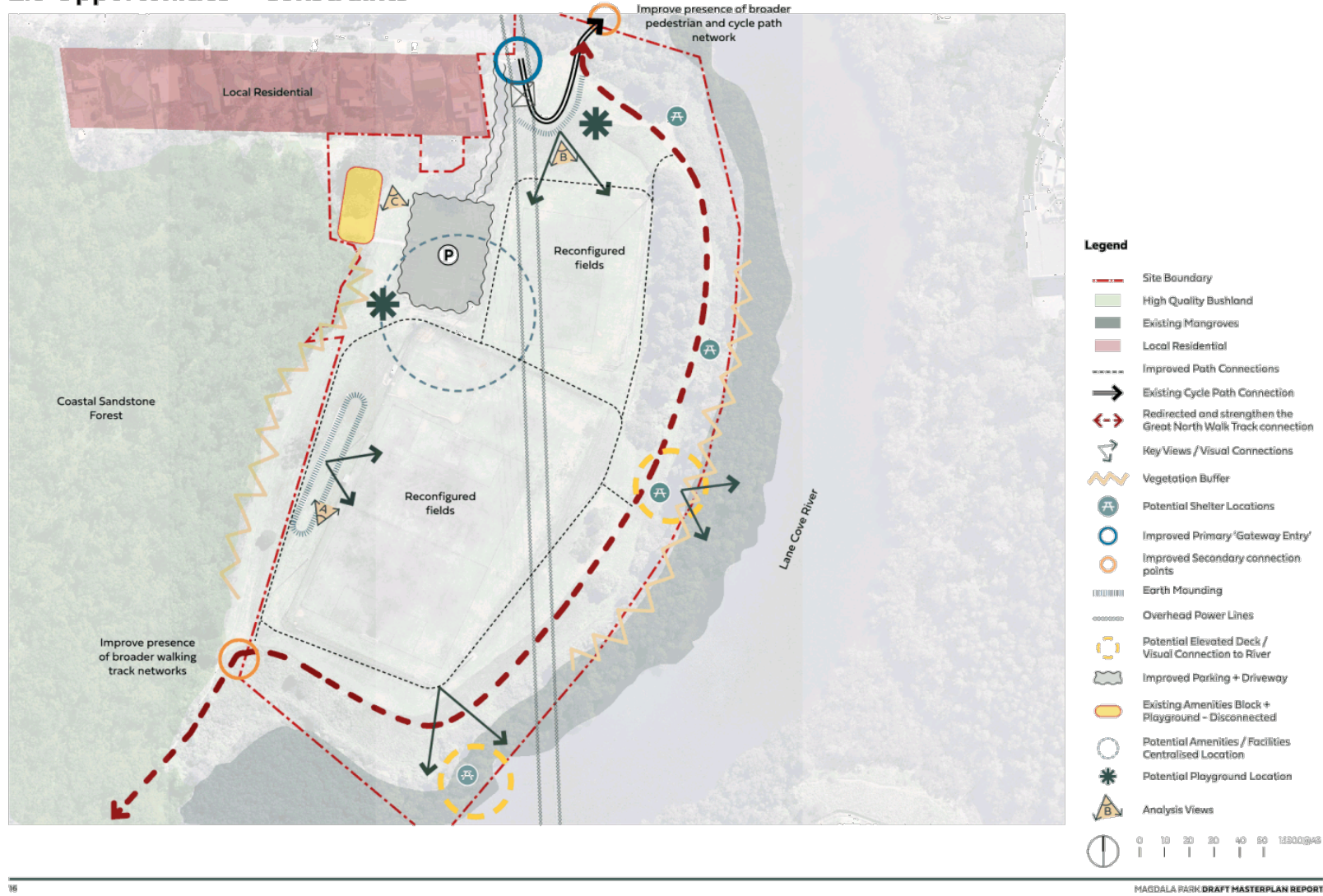
Senior sports field



ITEM 3 (continued)

ATTACHMENT 1

2.6 Opportunities + Constraints



ITEM 3 (continued)

ATTACHMENT 1

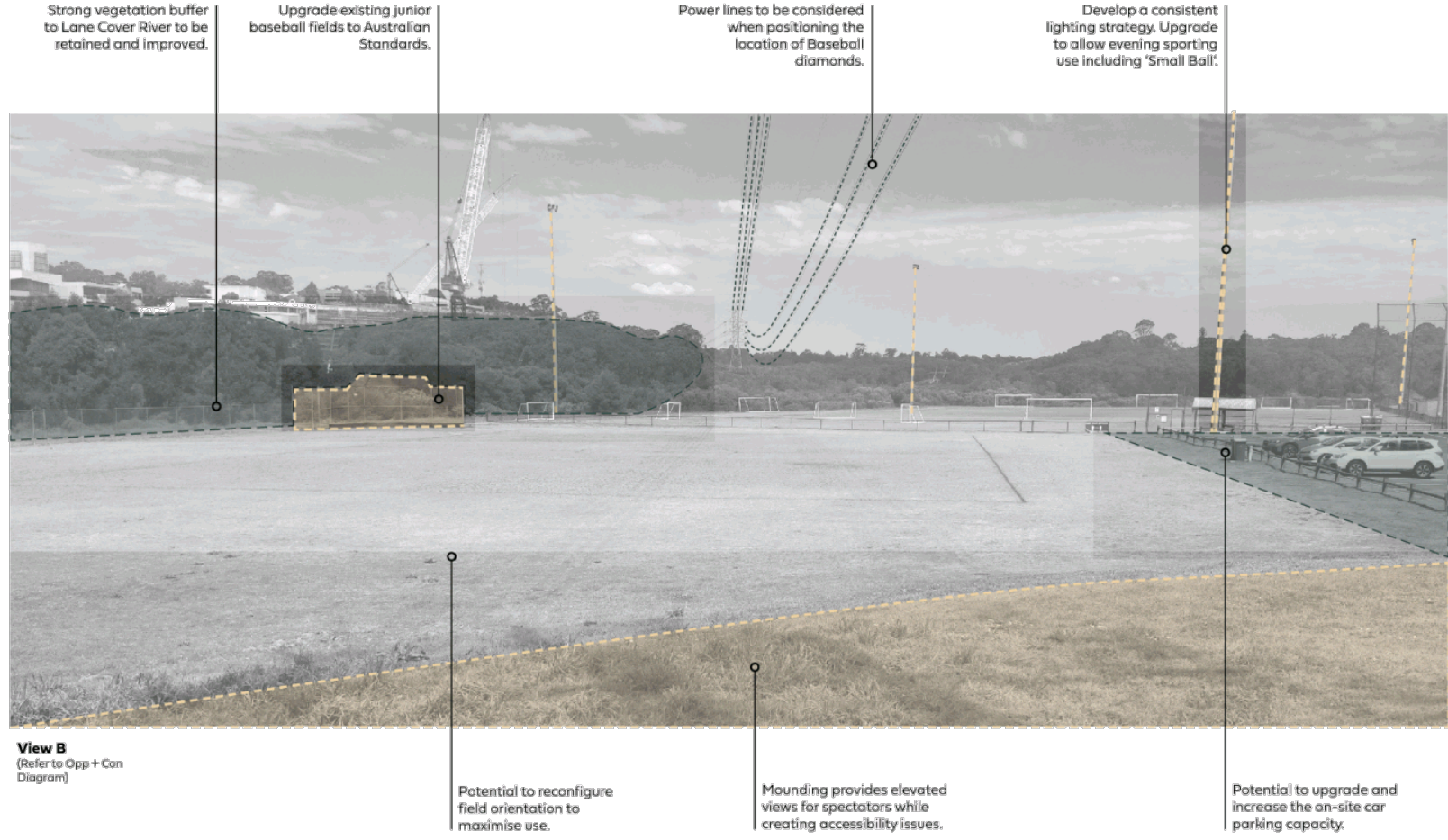
2.7 Analysis Overlay Image



ITEM 3 (continued)

ATTACHMENT 1

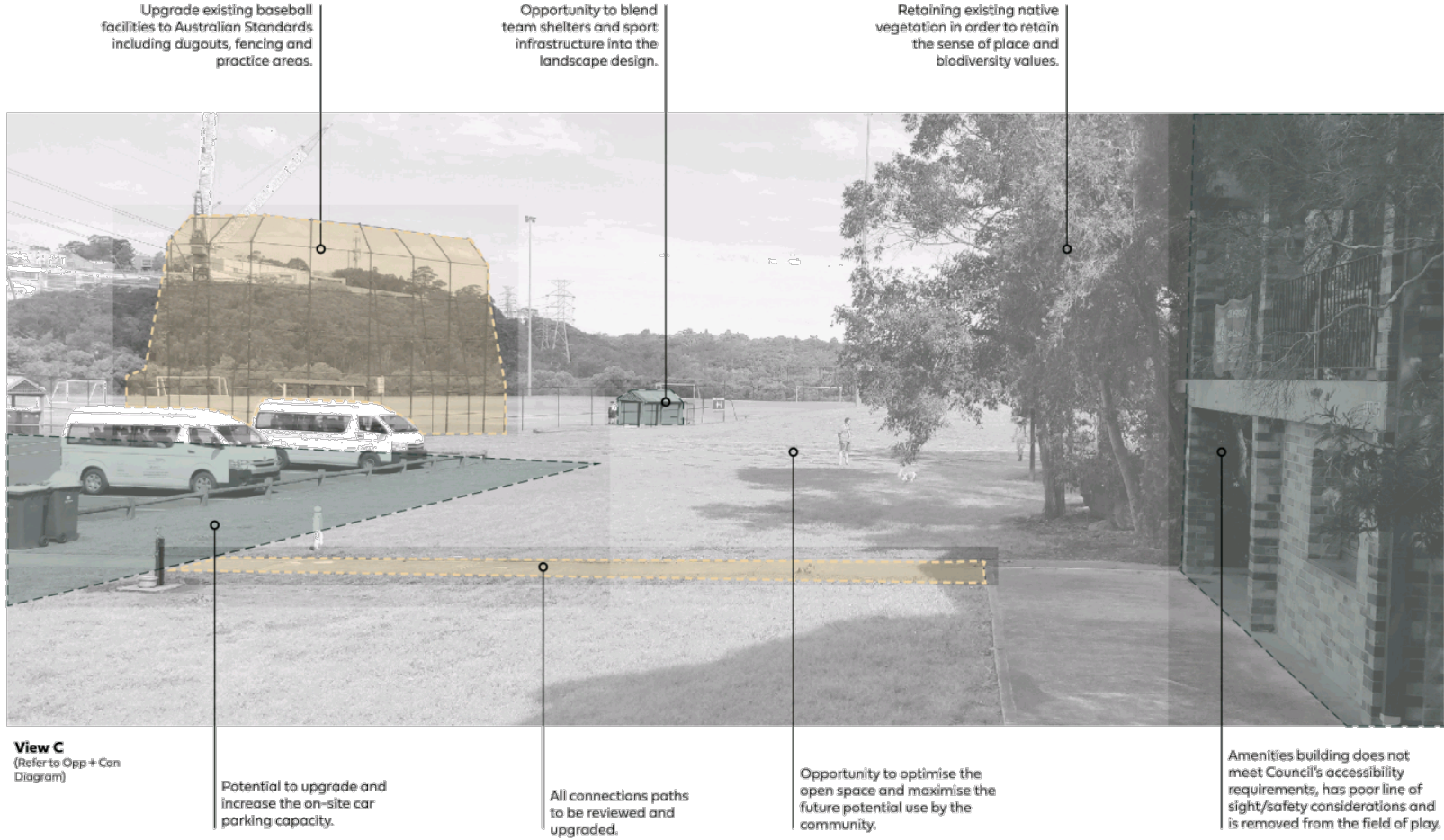
2.7 Analysis Overlay Image



ITEM 3 (continued)

ATTACHMENT 1

2.7 Analysis Overlay Image



ITEM 3 (continued)

ATTACHMENT 1

2.8 Selection of Community Feedback

"It would really be great to upgrade the Baseball facilities, including flood light improvements, drainage and dug-outs"

"Better signage and rules of the park in more places"

"Ensure that the route of the Great North Walk through the park is clear to walkers in both directions"

"Would be great to see some cover areas, tables, bbq's, and paths and bikeways along the water."

"Habitat planting of native shrubs"

"Don't lose the view - this is one of the aspects that makes Magdala Park amazing."

"Upgrade the drainage"

"Magdala is for football"

"Shading and windbreaks for spectator comfort"

"Relocate and update club house to be single level and disabled friendly"

"More parking"

"Extend the car park and make the driveway wider and safer / add a footpath along the side so that you can walk in safely"

"Playground needs updating. This would be a great area for one of the natural wild play areas for older kids."

"Walking track around the outside of the ovals and between the large oval and small ovals possibly some seating along the river bank"

ITEM 3 (continued)

ATTACHMENT 1



PLACE DESIGN GROUP

21

ITEM 3 (continued)

ATTACHMENT 1



ITEM 3 (continued)

ATTACHMENT 1

3.1 Overall Masterplan

The Magdala Park Masterplan has been designed to maximise the site's recreational potential, both active and passive. Taking into account the site's unique location, community feedback and natural surroundings, the Masterplan design aims to cater for a wide range of users.

Magdala Park will become a sporting hub for the local and broader community with the inclusion of 1x primary baseball field, 4x secondary baseball fields, batting cages + pitching den, 2x senior soccer fields, 1x small soccer field, new amenities building and spectator seating. This will be accompanied by an enlarged car park, new 'nature-based' playground, formalised path networks (including the Great North Walk route), picnic shelters and native vegetation that ties into the local environment.

The Masterplan has been designed to provide a safe, inclusive and activated space for the enjoyment of the local community and visitors. The site provides flexibility for unstructured recreation as well as allowances for formal sport.

Due to the site's location bound by National Park and the Lane Cove River, the site has the ability to operate in the evening without severely disturbing local residents. This means the lighting levels required for evening baseball use can be accommodated (subject to future lighting report at a later stage).

Furthermore, in order to accommodate the increase sporting use and field layout, retaining along the eastern boundary will be required before sloping again to the Lane Cove River. To counteract the impact of field water run off, bio-buffer planting has been introduced to help manage stormwater before running into the mangrove edge / river.

Not only has the user experience for players been elevated but spectators, walkers, joggers and passive users as well. This has been designed through a new arrival experience off Magdala Road, improved traffic flow through the car park, improved connections to the wider path network, a sense of arrival through the new amenities building, viewing decks overlooking the adjacent mangroves, new BBQ and picnic facilities as well a dedicated perimeter track that ties into the Great North Walk.

Overall, this Masterplan has been developed with future longevity in mind, maximising the site's recreational use, while catering for a wide range of local community users and visitors.



ITEM 3 (continued)

ATTACHMENT 1

3.2 Magdala Park North



ITEM 3 (continued)

ATTACHMENT 1

Legend

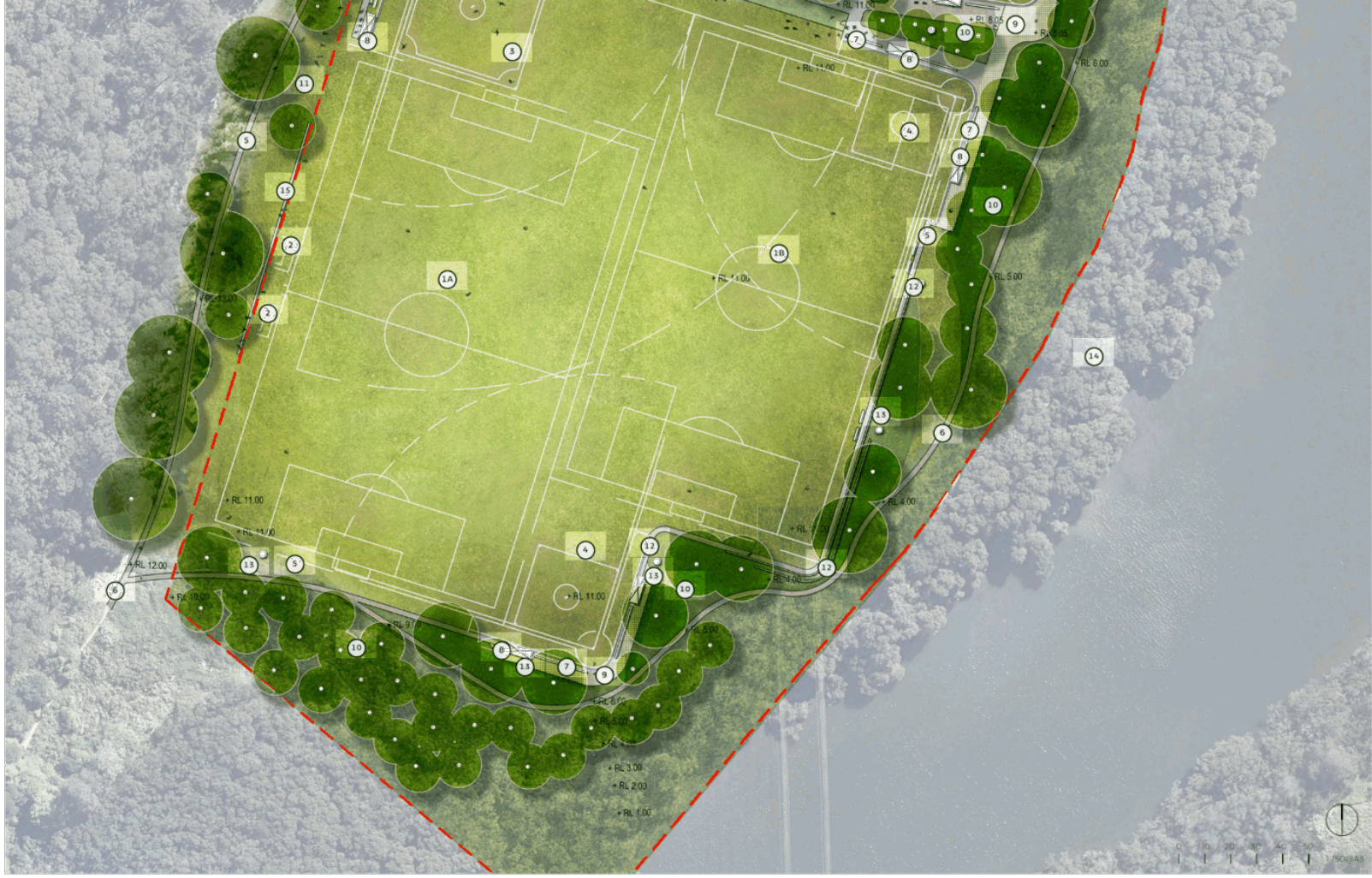
- 18 Primary football field B (56x100m) with 3m run off
- 2 Secondary football field (50x70m) with 3m run off
- 3 Primary baseball with permanent dirt pitching mound and bases (100m home run arc)
- 4 Secondary baseball field (60m home run arc)
- 5 Proposed amenities building (anticipated size 225m²). Designed to include 4 x changerooms, umpire room, canteen and public toilets. Large awning over the building + forecourt area (anticipated 85m² of covered social space)
- 6 Entry forecourt area with stone paving
- 7 Enlarged car park from 71 to 118 spaces
- 8 Accessible path network
- 9 'Nature-based' local playground with climber, swings and rocker. Shade provided by spreading tree canopy
- 10 Great North Walk track
- 11 Terraced spectator seating
- 12 2x Batting practice cages with short pile synthetic grass surface
- 13 1x Bullpen for pitching practice with short pile synthetic grass surface and storage cage
- 14 Baseball dugout - lightweight fenced structure with roof, seating and scoring facilities
- 15 Proposed picnic shelters
- 16 Feature viewing deck cantilevered over planting. Fibre Reinforced Plastic (FRP) with balustrade.
- 17 Native Bio-buffer planting to help manage stormwater before running into the mangrove edge / Lane Cove River
- 18 Mass planted areas with large trees
- 19 Retaining to sports field edge
- 20 New tree lined entrance path with widened vehicle access
- 21 Upgraded park entry with signage, planting and paths
- 22 Sports field lighting
- 23 Bicycle parking
- 24 Filtered water station
- 25 Maintenance access ramp



ITEM 3 (continued)

ATTACHMENT 1

3.3 Magdala Park South



ITEM 3 (continued)

ATTACHMENT 1

Legend

- 1A Primary soccer field A (64x105m) with 3m run off
- 1B Primary soccer field B (56x100m) with 3m run off
- 2 Soccer technical area / coaches box
- 3 Primary baseball field with permanent dirt pitching mound and bases (100m home run arc)
- 4 Secondary baseball field (60m home run arc)
- 6 Accessible path network
- 6 Great North Walk track
- 7 Spectator seating
- 8 Baseball dugout - lightweight fenced structure with roof, seating and scoring facilities
- 9 Feature viewing deck cantilevered over planting, Fibre Reinforced Plastic (FRP) with balustrade.
- 10 Native Bio-buffer riparian planting to help manage stormwater before running into the mangrove edge / Lane Cove River
- 13 Existing mounding along perimeter to be flattened allowing for soccer pitch
- 12 Retaining to sports field edge
- 13 Sports field lighting
- 14 Protected mangroves along Lane Cove River
- 15 Low retaining/seating wall to maintain mound levels



ITEM 3 (continued)

ATTACHMENT 1

3.4 Perspective Views



Looking south from car park edge

ITEM 3 (continued)

ATTACHMENT 1

3.4 Perspective Views



Looking west from viewing deck

3.5 Design + Activation Strategy



Design Principles

- Enhance park arrival experience with proposed car park enhancements and feature entry statements such as new amenities building and pedestrian forecourt.
- Provide spaces for gathering and spectating.
- Create a safe environment for families to utilise play equipment with shelters and kick-about spaces adjacent.
- Introduce a series of accessible paths to ensure equal access to all main park elements.
- Provide a variety of open spaces which facilitate sport throughout the seasons and also passive recreation during off peak times.
- Connect Magdala Park with the wider active transport and pedestrian networks (i.e Great North Walk, cycle paths etc).
- Passive water management strategies such as bio-swales and dry creek beds to mitigate pollutants entering the river.

Legend

- Site Boundary
- Car Park Arrival
- Community Facilities
- Entry Forecourt
- Passive Turf Area
- Active Sport Field
- Training/Warm-up areas
- Spectator Seating
- Bush Walking Tracks



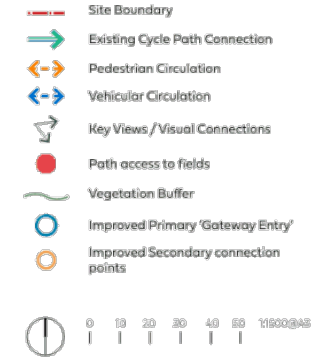
3.6 Circulation Strategy



Design Principles

- Connect Magdala Park with the wider active transport and pedestrian networks (i.e Great North Walk, cycle paths etc).
- Provide a recognisable hierarchy of paths to help navigation and wayfinding throughout the park.
- Ensure equal access is achieved to all major site interventions.
- Level or accessible access to playing fields.
- Improved arrival experience with high quality paving finishes, open sight lines and direct routes to key site locations.
- One way car park circulation to reduce congestion at peak times.
- Sufficient access for Council maintenance + emergency vehicles to all necessary areas of the park. Vehicle access between northern and southern fields located adjacent bullpen.

Legend



ITEM 3 (continued)

ATTACHMENT 1

3.7 Lighting Strategy



Design Principles

- Relocate and upgrade field lighting to avoid clashes with proposed layout and level changes.
- Create a safe pedestrian experience at night with a series of lighting interventions on all key path networks in conjunction with Council's Park Lighting Policy.
- Incorporate lighting into walls, buildings and paving where appropriate to reduce additional clutter within the landscape.

Legend

- Site Boundary
- x Existing Sports Field Lighting Pole to be removed
- Indicative Sports Field Light Pole Location (subject to future lighting report)
- Inground Lighting
- Pole Top Light, 5m High
- Post Lighting
- Wall Lighting
- Sports Fields to be lit to Australian Sports Fields Standards



ITEM 3 (continued)

ATTACHMENT 1

3.8 Signage and Wayfinding Strategy



Design Principles

- Identifying key architectural and natural features, as well as points of interest, decision points, and service only zones that will be incorporated into a landmark hierarchy framework.
- Creation of a place naming strategy based on the surrounding and on site structures and landmarks.
- Collate an understanding of user and visitor journeys with particular focus on their mode of transport and their specific needs within the space.
- Mapping the common and necessary links that will occur across the site ensuring logical and timely information is provided at decision points physical route between the points.
- Developing a suite of appropriate and informative wayfinding interventions that work in harmony with the park environment.
- Council to liaise with Crown Lands – NSW Department of Planning, Industry and Environment to ensure consistency between Park and Great North Walk wayfinding signage.

Legend

- Site Boundary
- Entry Signage (Vehicular)
- Identity Signage
- Primary Signage (Map based Pedestrian)
- Secondary Signage (Directional/Post)

Refer to 3.13 Landscape Character Images for precedent images.








3.9 Climate Change and Resilience Planning



Design Principles

- Human induced climate change will continue to cause increased impacts on both our natural and man-made environments. Events such as extreme rainfall, storms and floods, coupled with long term sea level rise will have impacts on our urban infrastructure, including parks, into the future. Council recognise these facts and have implemented the *Ryde Resilience Plan 2030*.
- This Masterplan considers the Park's long term future and sustainability, aiming to mitigate environmental damage while adding to the vital urban ecosystem and biodiversity.
- Magdala Park is in a fortunate position that the current field levels are approx. 11 metres above the adjacent Lane Cove River and sea level rise impact will be slight. However, climate change resilience analysis has been undertaken to understand how the Park will accommodate projected sea level change. As verified by *NSW Government Coastal Planning Guidelines (2010)* a level rise benchmark figure of 40cm by 2050 and 0.9m by 2100 has been adopted.
- The Masterplan has taken into consideration the Bush Fire Prone Vegetation Buffer (refer to Appendix 4.8). Construction and materiality of the amenities building to be further considered during detailed design and Development Application process.

Legend

-  Site Boundary
-  Current Sea Level
-  2100 Projected Sea Level
-  Stormwater flows
-  Bio-buffer planting



ITEM 3 (continued)

ATTACHMENT 1

3.10 Canopy Cover Calculations



Design Principles

- Plant large native canopy trees throughout the Park to provide shade and amenity for users.
- Plant large trees in / adjacent the carpark to reduce heat and provide shade.
- Retain and protect existing significant trees.
- Protect the mangroves along the Lane Cove River, including installing a bio-buffer along the western edge to capture nutrient run-off from sports fields.
- On the southern side of the Park and adjacent the National Park, planting density will be increased with new trees as this area is degraded.
- A variety of plant types, species and sizes are proposed to strengthen the biodiversity of the site and provide habitat for local fauna. This also includes mid-storey and under-storey plants.

Approximate Canopy Calculations

- Existing: **16.1%** of overall site
- Proposed: **33.2%** of overall site

Legend

- Site Boundary
- Tree Canopy Cover



ITEM 3 (continued)

ATTACHMENT 1

3.11 Planting Strategy



ITEM 3 (continued)

ATTACHMENT 1

3.12 Planting Palette

Indicative Planting Palette



Flindersia australis



Melaleuca quinquenervia



Angaphra hispida



Banksia 'Birthday Candles'



Anigozanthos 'Yellow Gem'



Leanandra flaviatilis



Westringia fruticosa 'Platn'Fruity'



Doryanthes excelsa



Goodenia ovata



Ozothamnus turbinatus



Chrysocephalum apicalatum



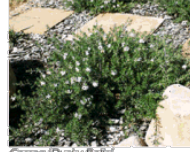
Eremophila debilis



Syzygium australe



Correa 'Dusky Bells'



Correa 'Dusky Bells'



Liriope muscari 'Isabella'



Myoporum parvifolium

Planting Character



Playground planting



Buffer planting



WSUD planting



Avenue planting towards amenities building



Amenities Building forecourt



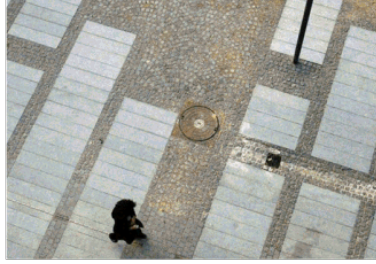
Planting adjacent shelters

ITEM 3 (continued)

ATTACHMENT 1

3.13 Landscape Character Images

Materials



Furniture



Wayfinding and signage








ITEM 3 (continued)

ATTACHMENT 1

3.14 Staging Strategy



Legend

-  Site Boundary
-  Stage 1 - All field works, southern & eastern vegetation/pathway improvements, baseball infrastructure.
-  Stage 2 - Amenities
-  Stage 3 - Car park
-  Stage 4 - Playground

ITEM 3 (continued)

ATTACHMENT 1

3.15 Site Elevation - AA



ITEM 3 (continued)

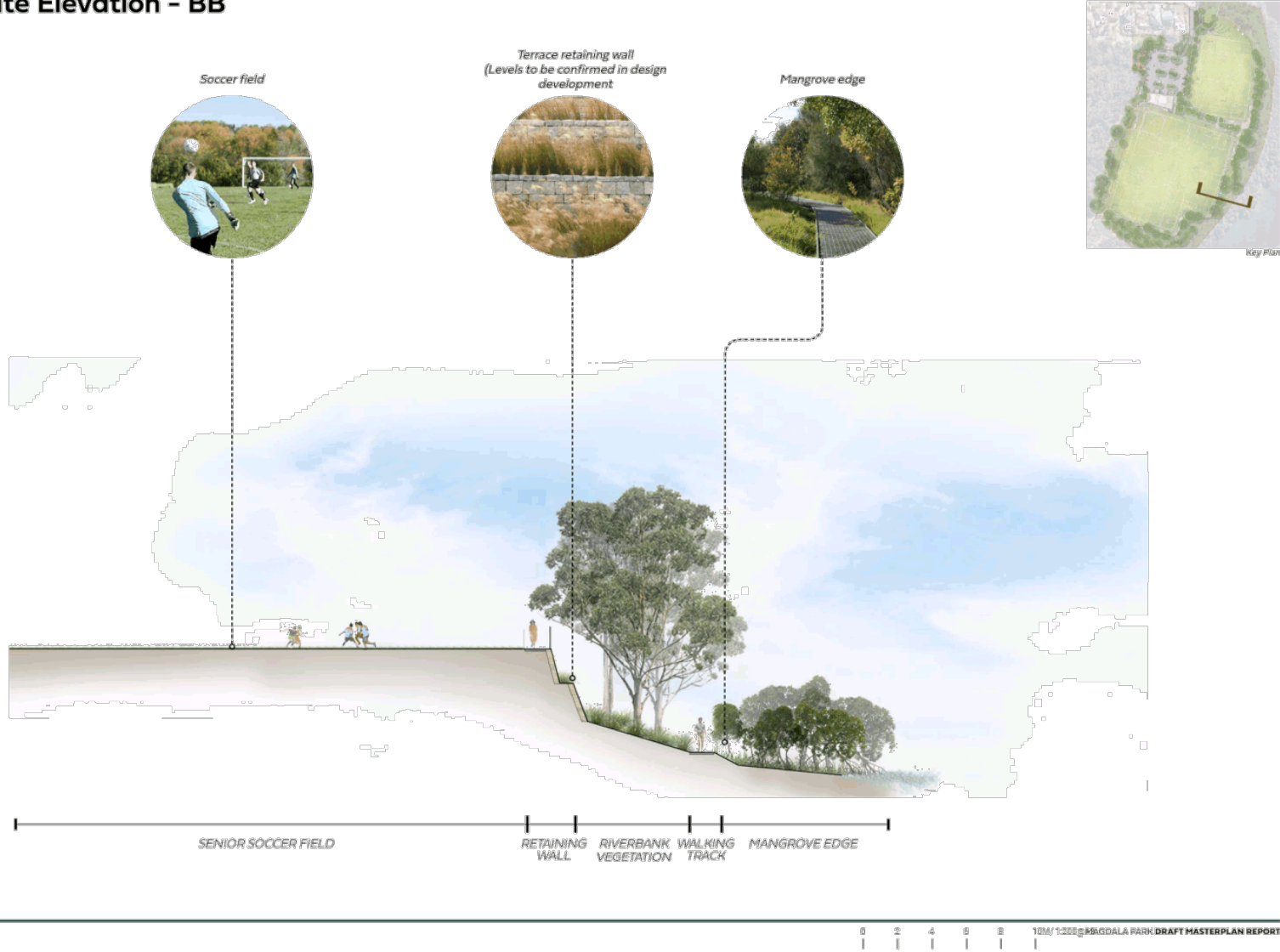
ATTACHMENT 1



ITEM 3 (continued)

ATTACHMENT 1

3.16 Site Elevation - BB



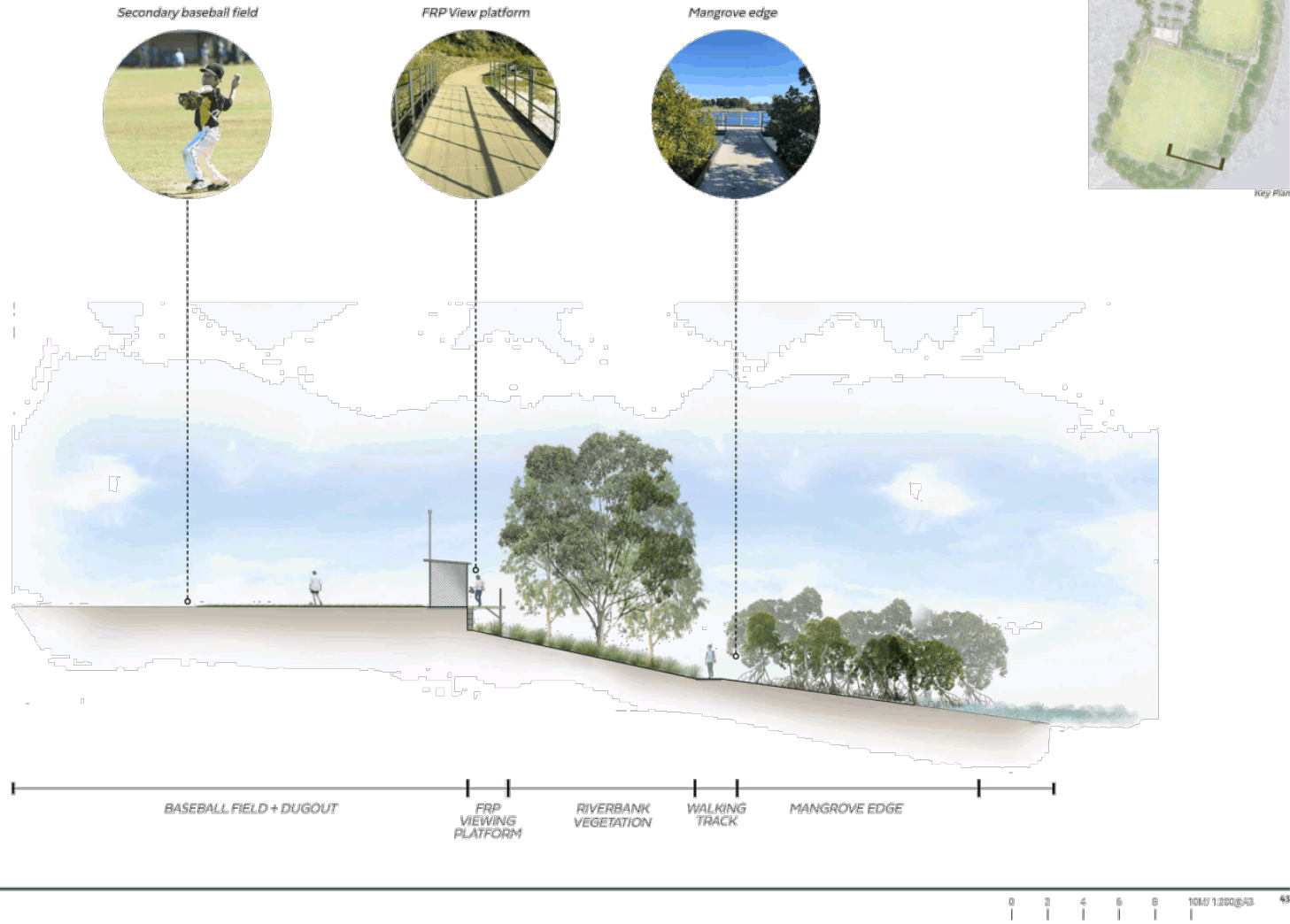
42

0 2 4 6 8 10M/ 1:200 @ MAGDALA PARK DRAFT MASTERPLAN REPORT

ITEM 3 (continued)

ATTACHMENT 1

3.17 Site Elevation - CC



ITEM 3 (continued)

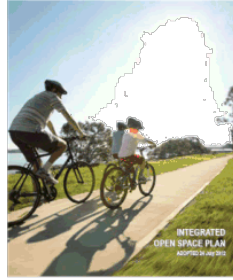
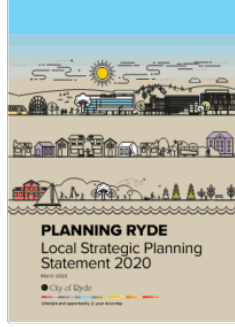
ATTACHMENT 1



ITEM 3 (continued)

ATTACHMENT 1

4.1 Strategic Documents



- + Greater Sydney Commission Greater Sydney Regional Plan – A Metropolis of Three Cities (2018)
- + Greater Sydney Commission Our Greater Sydney 2056 North District Plan (2018)
- + City of Ryde Planning Ryde Local Strategic Planning Statement (2020)
- + Ryde Local Environmental Plan (2014)
- + City of Ryde 2028 Community Strategic Plan (2018)
- + City of Ryde Integrated Open Space Plan (IOSP, 2012)
- + City of Ryde Sport and Recreation Strategy 2016 – 2026 (2017)
- + City of Ryde Synthetic Surface Action Plan 2016 – 2026 (2017)
- + City of Ryde Children’s Play Implementation Plan (2013) and Update (2019)
- + City of Ryde Biodiversity Plan (2016)
- + City of Ryde Bicycle Strategy and Masterplan (2014)
- + City of Ryde Generic Plan of Management – Sports Grounds (2020)
- + City of Ryde Generic Plan of Management – Parks and General Community Use (2020)
- + City of Ryde Draft Generic Plan of Management – Natural Areas (under development)
- + City of Ryde Generic Plan of Management for Sportsground, Parks, Natural Areas, General Community Use (2001)
- + Lane Cove National Park Plan of Management (2016)
- + City of Ryde Draft Resilience Plan 2030 (under development)
- + City of Ryde Disability Inclusion Action Plan (2017)
- + NSW Government Department of Primary Industries Office of Water, Guidelines for riparian corridors on waterfront land (2012)
- + Lane Cove River Coastal Management Plan
- + Parramatta River Masterplan – Duba, Budu, Barra (2019)
- + Football NSW Field Markings and Equipment.
- + Baseball Australia Club Facility Resource Guide
- + Relevant stormwater, drainage and flood surveys, mapping and modelling as supplied by Council.

ITEM 3 (continued)

ATTACHMENT 1

4.2 Precedent Scale Comparison



- Magdala Park, North Ryde**
- + 1x Senior soccer field
 - + 1x Junior/mini soccer field
 - + 2x Senior/Intermediate baseball diamonds
 - + 2x Junior baseball diamonds



- Bill Mitchell Park, Tennyson Point**
- + 1x Senior soccer field
 - + 1x Junior/ mini soccer field
 - + 2x Cricket fields



- ELS Hall Park, Marsfield**
- + 2x Senior soccer fields
 - + 1x Senior baseball diamond
 - + 1x Junior baseball diamond
 - + 1x Rugby oval
 - + 2x AFL Junior ovals
 - + 2x Cricket fields



- Westminster Park, Gladesville**
- + 1x Senior baseball diamond
 - + 1x Senior soccer field
 - + 1x Cricket field

ITEM 3 (continued)

ATTACHMENT 1

4.2 Precedent Scale Comparison



Greenway Park, Cherrybrook

- + 2x Senior baseball diamonds
- + 2x Junior baseball diamonds
- + 1x Cricket fields



Rowland Park, Daceyville

- + 3x Senior soccer fields
- + 3 x Junior/ mini soccer field
- + 1x Cricket fields



Grantham Reserve, Blacktown

- + 1x Senior baseball diamond
- + 1x Junior baseball diamond
- + 2x Rugby fields

ITEM 3 (continued)

ATTACHMENT 1

4.3 Site History



Source: SIX Maps NSW

Source: City of Ryde Library Services

Timeline

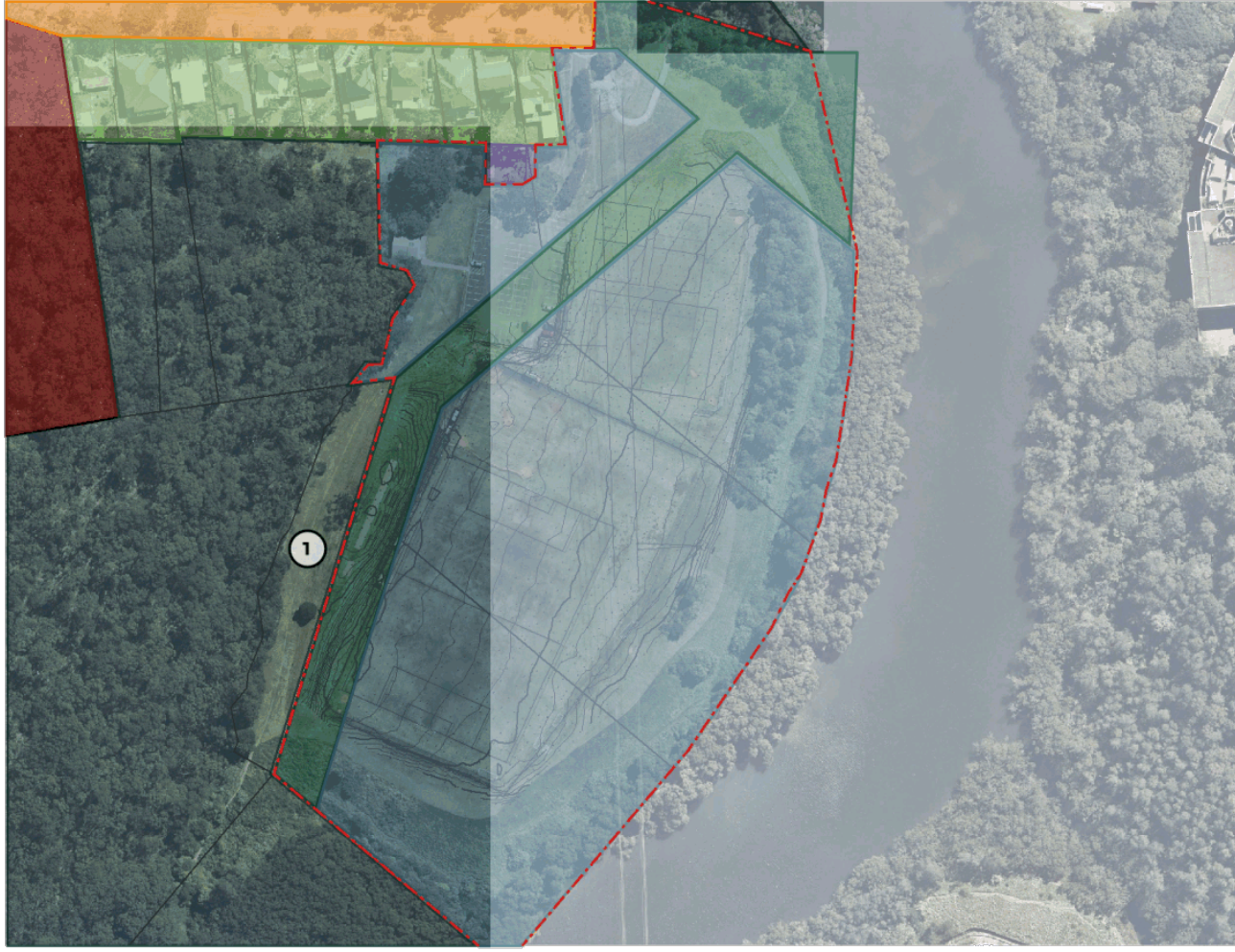
- + 1804 - Establishment of Field of Mars Common to assist with breeding stock owned by the early settlers
- + 1874 - Resumption of the Field of Mars Common
- + 1958 - Transferred to the Municipality of Ryde
- + 1959-1970 - Use as a sanitary depot for the disposal of garbage
- + 1980 - Road closure gazetted
- + 1981 - Construction of sports fields
- + 1985 - Construction of amenities block completed
- + 1996 - Baseball diamond was cleared
- + 1999 - Field levelled and graded
- + 2009 - Mini field graded











ITEM 3 (continued)

ATTACHMENT 1

4.4 Zoning / Land Ownership Plan



Legend

-  City of Ryde community land
-  National Parks Wildlife Service
-  City of Ryde - Road Reserve
-  Sydney Water
-  Private Residential
-  North Ryde RSL
-  Closed Road
-  **1**

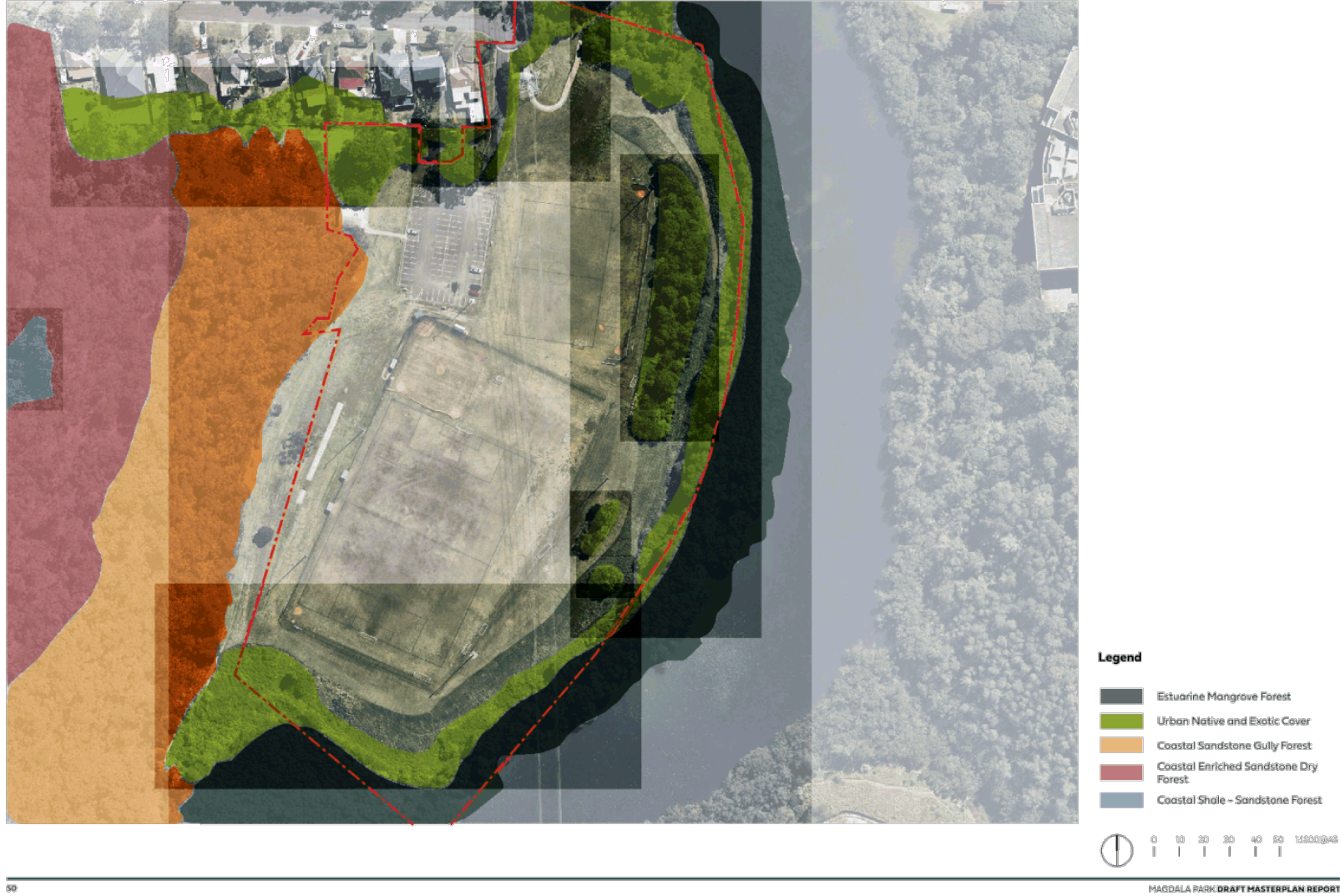
Note: Area along western boundary owned by NPWS. However, section of parkland is currently maintained by City of Ryde.



ITEM 3 (continued)

ATTACHMENT 1

4.5 Vegetation Communities



ITEM 3 (continued)

ATTACHMENT 1

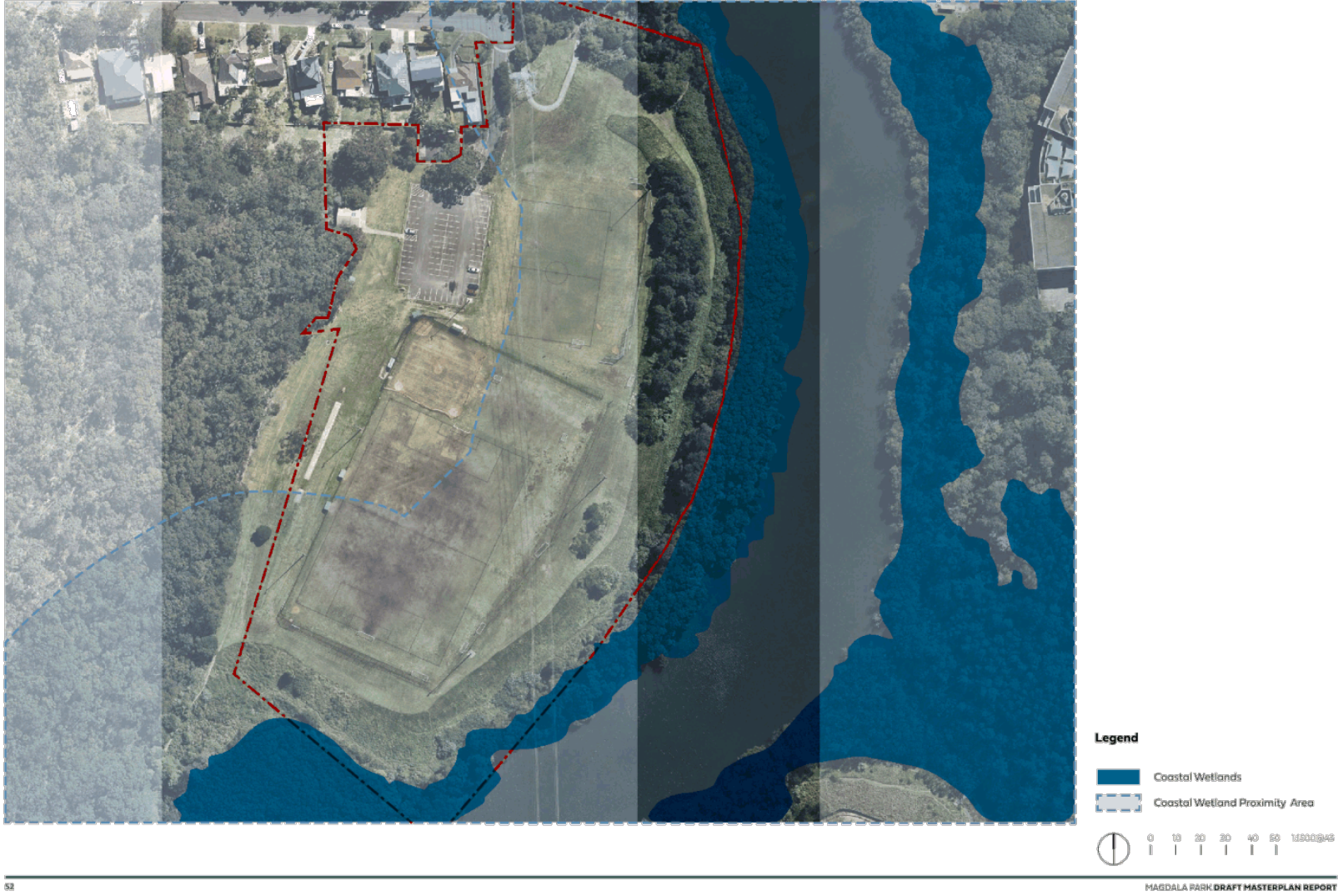
4.6 Biodiversity Values Map



ITEM 3 (continued)

ATTACHMENT 1

4.7 SEPP Coastal Management



ITEM 3 (continued)

ATTACHMENT 1

4.8 Bush Fire Mapping



4.9 Senior Baseball Field Layout Alternative



Inclusions:

- + 1x Primary A soccer (64x105m) with coaches boxes
- + 1x Primary B soccer (56x100m)
- + 1x Secondary soccer (50x70m)
- + 2x Primary baseball (95m arc)
- + 3x Secondary baseball (60m arc)

Note:

- 2 x Senior Baseball fields were investigated (95m arc) but not deemed feasible due to:
- Site/size constraints (topography)
 - Significant costs/engineering feasibility of retaining works
 - Disassociation of main field (southern field) from supporting infrastructure,
 - Not able to accommodate other masterplan elements eg. circulation paths (inc. Great North Walk) etc.
 - Impacts on protected mangrove
 - Reduces tree canopy and bio-buffer around the southern sports field

Legend

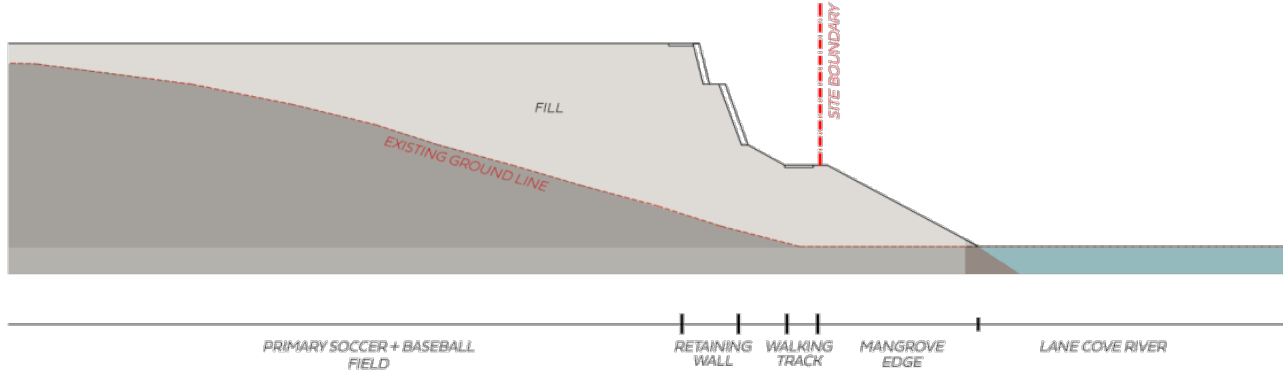
- Site Boundary
- Primary Soccer
- Secondary Soccer
- Primary Baseball
- Secondary Baseball
- Additional Retaining Required



ITEM 3 (continued)

ATTACHMENT 1

4.10 Site Section AA - Senior Baseball Field Layout Alternative



0 2 4 6 8 10M/1:300@A3

ITEM 3 (continued)

ATTACHMENT 1



place
design
group.

Australia
China
South East Asia

Follow us on
   

placedesigngroup.com

ITEM 3 (continued)

ATTACHMENT 2



place design group.

Place Design Group Pty Ltd
100/102/104/106/108/110/112/114/116/118/120/122/124/126/128/130/132/134/136/138/140/142/144/146/148/150/152/154/156/158/160/162/164/166/168/170/172/174/176/178/180/182/184/186/188/190/192/194/196/198/200/202/204/206/208/210/212/214/216/218/220/222/224/226/228/230/232/234/236/238/240/242/244/246/248/250/252/254/256/258/260/262/264/266/268/270/272/274/276/278/280/282/284/286/288/290/292/294/296/298/300/302/304/306/308/310/312/314/316/318/320/322/324/326/328/330/332/334/336/338/340/342/344/346/348/350/352/354/356/358/360/362/364/366/368/370/372/374/376/378/380/382/384/386/388/390/392/394/396/398/400/402/404/406/408/410/412/414/416/418/420/422/424/426/428/430/432/434/436/438/440/442/444/446/448/450/452/454/456/458/460/462/464/466/468/470/472/474/476/478/480/482/484/486/488/490/492/494/496/498/500/502/504/506/508/510/512/514/516/518/520/522/524/526/528/530/532/534/536/538/540/542/544/546/548/550/552/554/556/558/560/562/564/566/568/570/572/574/576/578/580/582/584/586/588/590/592/594/596/598/600/602/604/606/608/610/612/614/616/618/620/622/624/626/628/630/632/634/636/638/640/642/644/646/648/650/652/654/656/658/660/662/664/666/668/670/672/674/676/678/680/682/684/686/688/690/692/694/696/698/700/702/704/706/708/710/712/714/716/718/720/722/724/726/728/730/732/734/736/738/740/742/744/746/748/750/752/754/756/758/760/762/764/766/768/770/772/774/776/778/780/782/784/786/788/790/792/794/796/798/800/802/804/806/808/810/812/814/816/818/820/822/824/826/828/830/832/834/836/838/840/842/844/846/848/850/852/854/856/858/860/862/864/866/868/870/872/874/876/878/880/882/884/886/888/890/892/894/896/898/900/902/904/906/908/910/912/914/916/918/920/922/924/926/928/930/932/934/936/938/940/942/944/946/948/950/952/954/956/958/960/962/964/966/968/970/972/974/976/978/980/982/984/986/988/990/992/994/996/998/1000

Magdala Park Draft Masterplan
Magdala Park, North Ryde

DATE	PROJECT NO.	REVISION	DWG NO.
10/05/2021	2220043	03	LA-CD-001
0	0	0	000 1000001

ITEM 3 (continued)

ATTACHMENT 3

MAGDALA PARK

Draft Masterplan



STAGE 2
COMMUNITY CONSULTATION REPORT
APRIL 2021

ITEM 3 (continued)

ATTACHMENT 3



CITY OF RYDE | Magdala Park Draft Masterplan – Stage 2
Community Consultation Report
April 2021© City of Ryde

DISCLAIMER

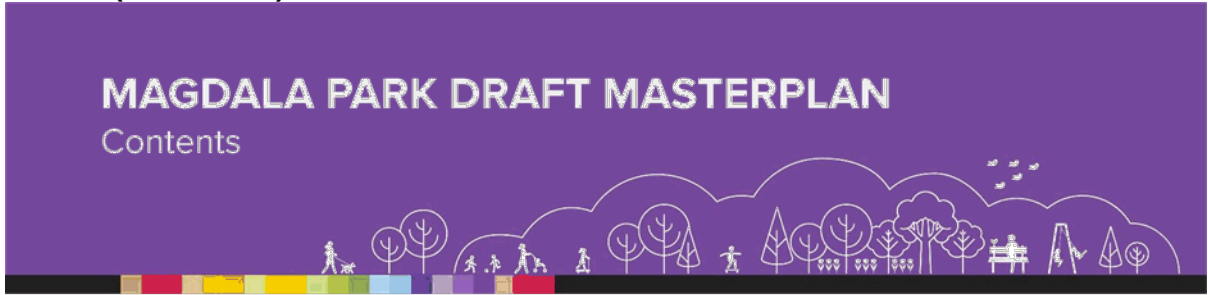
While every reasonable effort has been made to ensure that this document is correct at the time of printing, the City of Ryde, its agents and employees, disclaim any and all liability to any person in respect of anything or the consequences of anything done or omitted to be done in reliance or upon the whole or any part of this document.

COPYRIGHT NOTICE

If you wish to reproduce, alter, store or transmit material appearing in this submission document for any purpose, requests for formal permission should be directed to the General Manager, City of Ryde.

ITEM 3 (continued)

ATTACHMENT 3

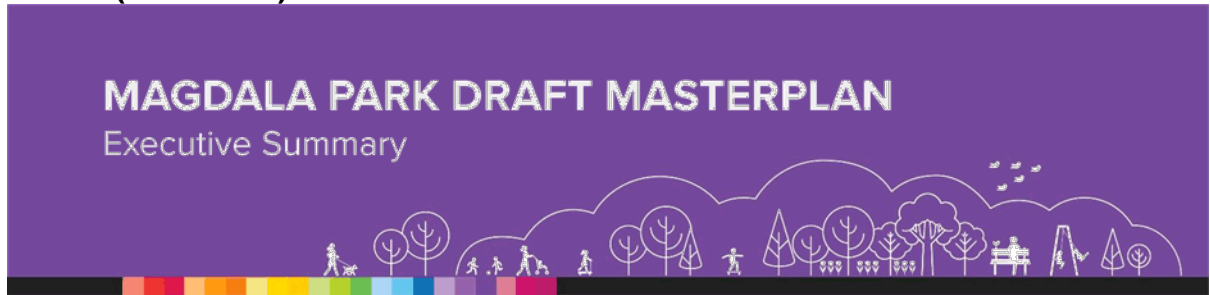


Executive Summary	3
Background	4
Community Consultation Timeline	5
Community Consultation Methodology	6-7
Community Consultation Results	8-13
Appendices	
• Website	14
• Have Your Say eNewsletter	15
• A4 Flyer	16
• Park Signage	18
• Newspaper Ad	19
• Facebook Ad	20
• Social Pinpoint Results	21



ITEM 3 (continued)

ATTACHMENT 3



The City of Ryde is developing a Masterplan for Magdala Park. A Masterplan provides the framework for how the park will be upgraded over the next 20 years. This strategic plan aims to meet the current and future needs of the community and user groups, while ensuring sustainable and efficient use and ecological outcomes.

The park currently includes sportsgrounds with sports field lighting, an amenities building, a car park, local playground and picnic shelter.

Stage 1 community consultation was conducted from 10 August to 30 August 2020 during which the community could provide comment and suggestions via an online interactive map, paper survey or provide feedback at a registered phone session with a member of the project team. This was promoted through City of Ryde's Have Your Say website, flyers to surrounding residents, an eNewsletter to stakeholders, signage in the park and an advertisement in the local newspaper.

The City of Ryde's internal community engagement team conducted Stage 2 community consultation to gather feedback from the community on the draft Masterplan design for Magdala Park. The draft Masterplan included an increased number of sporting fields (for sports including football and baseball), new baseball pitching/batting facilities, new amenities building, new playground, improved onsite car parking, new walking paths/tracks and other passive park improvements.

Stage 2 community consultation was conducted from 8 March to 28 March 2021, during which the community could provide comments and suggestions via an online interactive map, paper survey or provide feedback at a registered phone session with Council staff. This was promoted through City of Ryde's Have Your Say website, flyers to surrounding residents, an eNewsletter to stakeholders, signage in the park and an advertisement in the local newspaper.

In light of the COVID-19 pandemic, Council held one-on-one phone sessions in lieu of face-to-face drop-in sessions. Community members could register for a one-on-one phone discussion with a member of the project team to provide feedback and ask any questions.

In total 169 comments were received from the community with 151 comments from the online interactive map, 16 email submissions and 2 phone submissions.

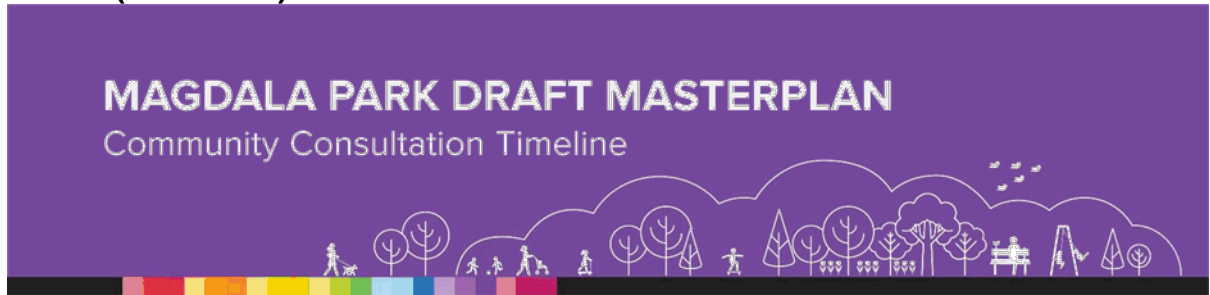
Through the Stage 2 community consultation, respondents provided positive feedback to the proposed reconfiguration of the sport fields, upgraded amenities building and additional support facilities. Some participants provided suggestions, such as the inclusion of netball courts, alternative field configurations, additional spectator seating, field lighting, meeting rooms and environmental considerations.

The feedback from this Stage 2 community consultation will be used to inform the final Masterplan for Magdala Park, which will be reported to Council for adoption in mid-2021.



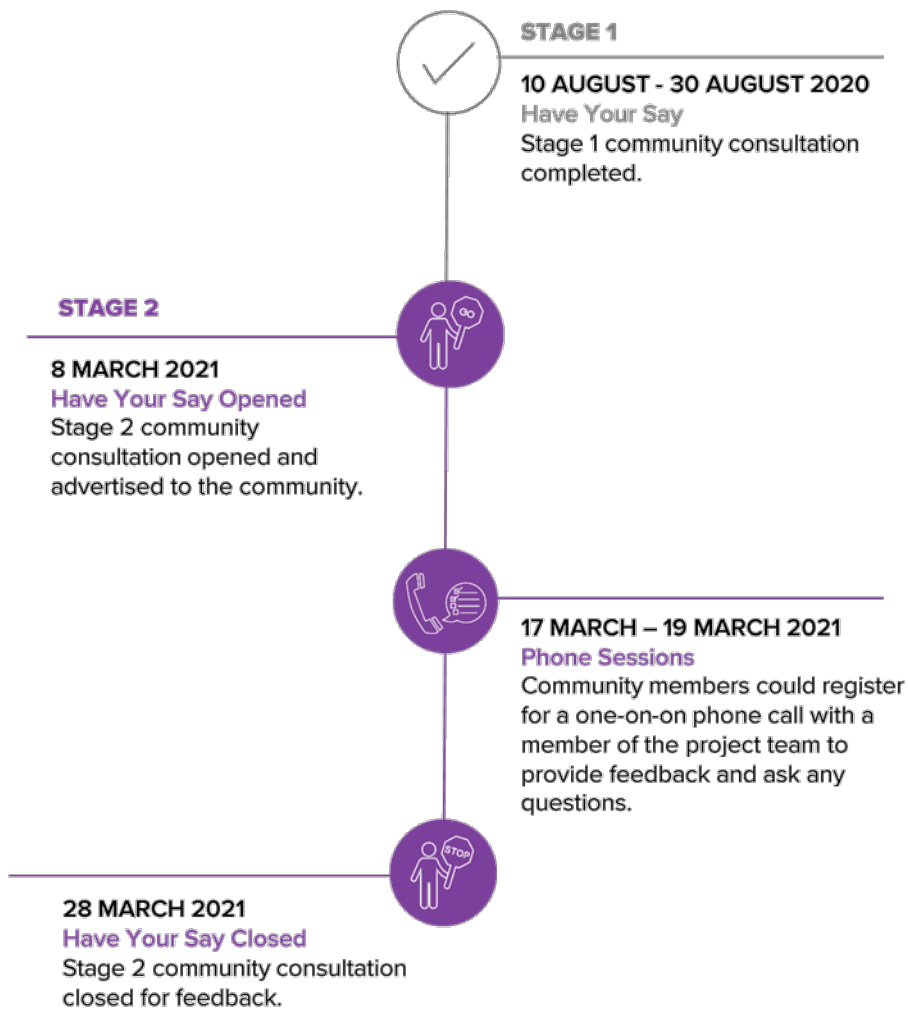
ITEM 3 (continued)

ATTACHMENT 3



MAGDALA PARK DRAFT MASTERPLAN

Community Consultation Timeline



ITEM 3 (continued)

ATTACHMENT 3



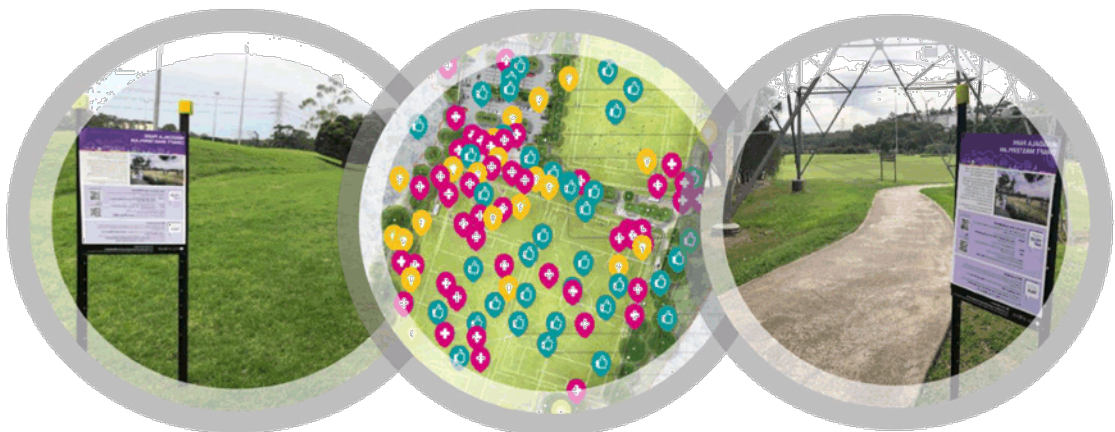
Date	Tool	Stakeholders	Overview	Engagement
Mon 8 Mar to Sun 28 Mar 2021	Have Your Say Website	Website users	A project webpage with background information, online survey and project updates.	363 page views and 283 unique visits
Mon 8 Mar to Sun 28 Mar 2021	Social Pinpoint	Website users	An online interactive map where stakeholders could provide comments and suggestions on the site. This was accessed through Council's Have Your Say webpage.	68 online respondents 151 online comments
Mon 8 Mar to Sun 28 Mar 2021	Park Signage	Magdala Park users	Park signage was placed to promote the project and feedback opportunities for park users and interested stakeholders.	3 signs at entry points of the park
Mon 8 March 2021	A4 Flyer	Surrounding residents – adjacent to park (500m radius)	An A4 flyer was letterbox dropped to promote the project and feedback opportunities for surrounding local residents. The flyer included a paper form that residents could mail back to Council.	44 flyers approximately
Mon 8 Mar 2021	Have Your Say eNewsletter	Internal and external stakeholders, sports clubs and community groups	A targeted eNewsletter was sent to relevant community stakeholders to provide an opportunity to give their feedback.	213 eNewsletters distributed 137 eNewsletters opened
Wed 10, 17, 24 Mar 2021	Open Community Consultations Ad Northern District Times	Newspaper subscribers	Newspaper advertisement to promote the project and consultation opportunities for all stakeholders.	38,000 total print readership

ITEM 3 (continued)

ATTACHMENT 3

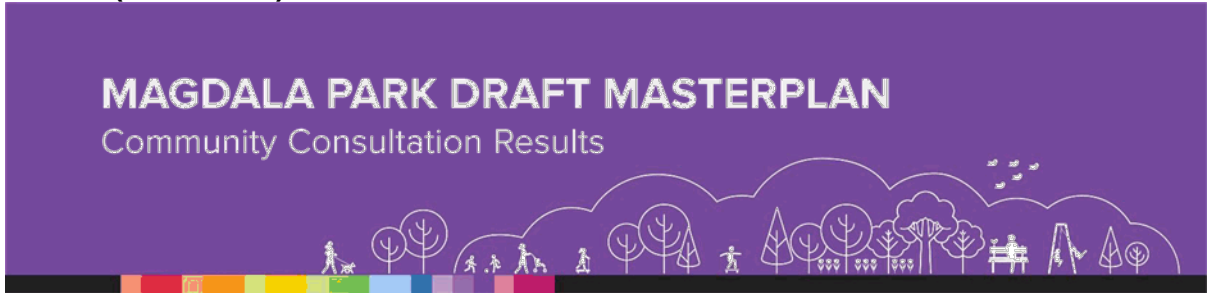


Date	Tool	Stakeholders	Overview	Engagement
Wed 17 Mar – Fri 19 Mar 2021	Registered phone sessions	All interested stakeholders	One-on-one discussion over the phone with a member of the project team to ask any questions and provide feedback about the project.	2 registered attendees who provided 2 comments
Fri 26 Mar 2021	Facebook Ad	Online Facebook users	Social media advertisement to promote the project and consultation opportunities for all stakeholders.	1,428 users reached 9 users engaged
Mon 8 Mar to Sun 28 Mar 2021	Information phone line and email	All Stakeholders	The City of Ryde main phone and email address was provided for the project and was open for feedback from the community.	16 submissions received



ITEM 3 (continued)

ATTACHMENT 3



151
SOCIAL
PINPOINT COMMENTS

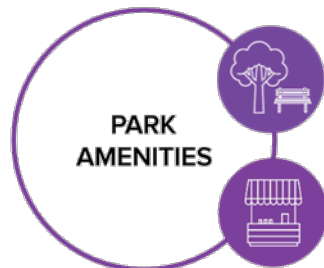
16
EMAIL
SUBMISSIONS

2
PHONE
SUBMISSIONS



Overall the proposed **field reconfiguration** of the sport fields were well received for both soccer and baseball. Some respondents provided suggestions for alternative layouts and field size. Other respondents would like to see **netball courts** included in the plans.

Baseball dugouts, batting cages and bullpen were generally favoured, with requests for baseball scorer tables, soccer technical areas/team benches and fencing.



The need for additional spectator **seating**, sport (small ball) **lighting and shaded** areas was commonly noted.

Respondents noted the need for the **upgraded amenities building**, including meeting rooms, a canteen, storage and change rooms.

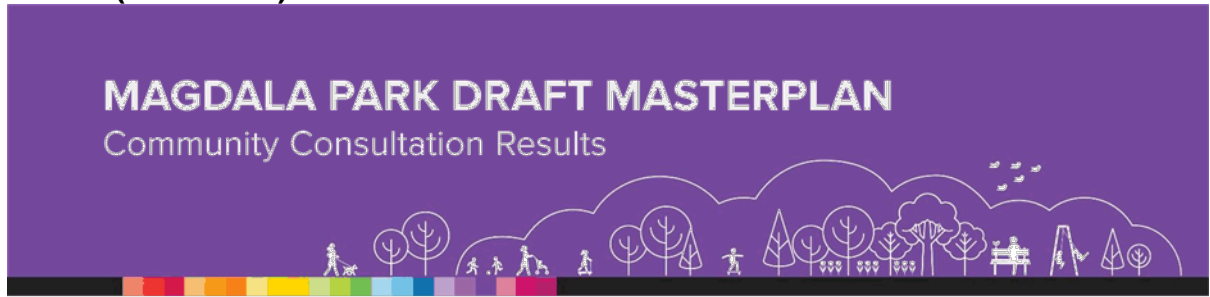


Due to street parking and traffic issues, the **expanded car park** was favoured. Comments also noted the need for **pathways** within the park, connecting to the Great North Walk and along Magdala Road for pedestrian safety.

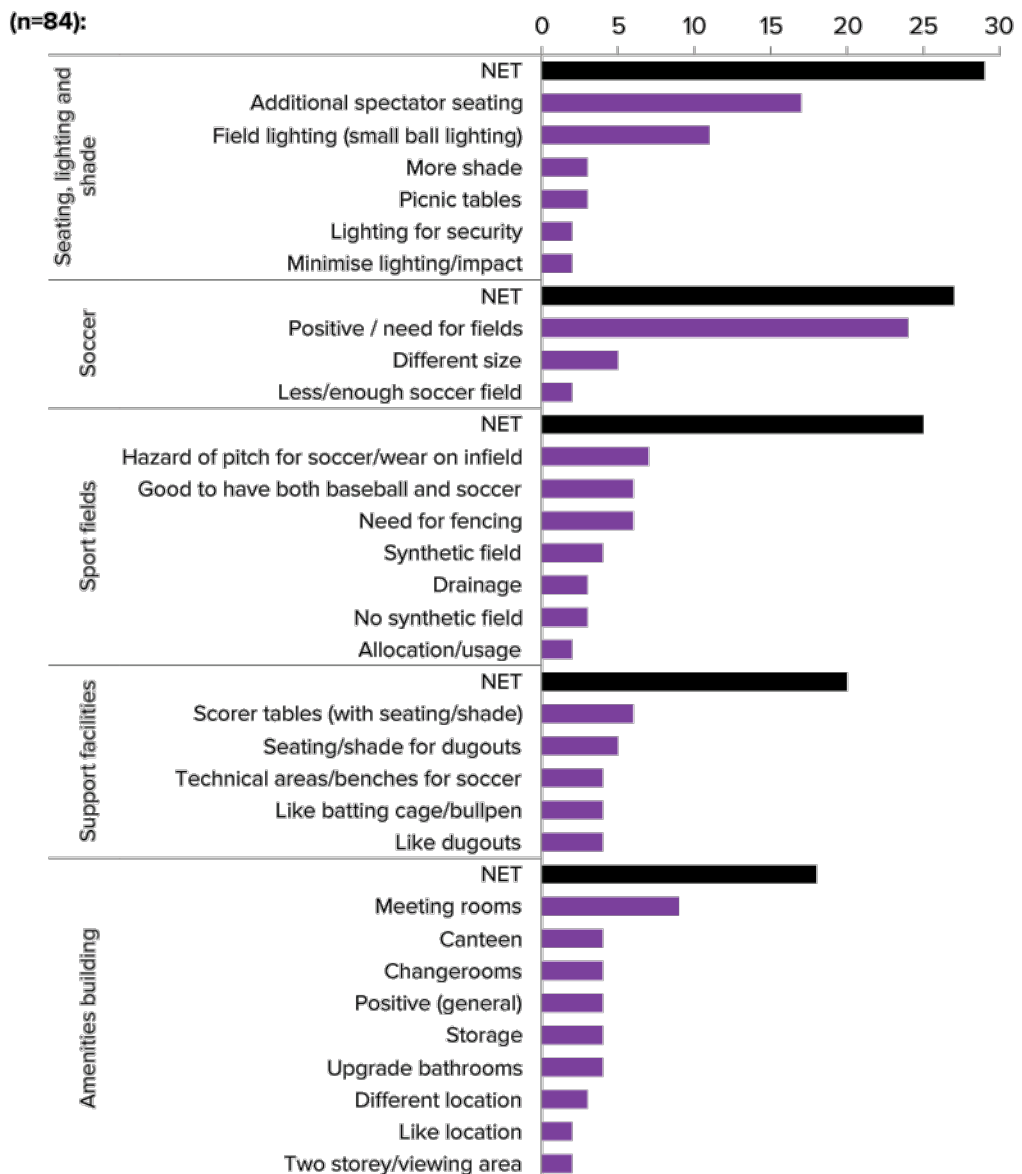
Other suggestions or favoured elements included the playground, protection of the surrounding environment, community inclusiveness and access for kayaks.

ITEM 3 (continued)

ATTACHMENT 3

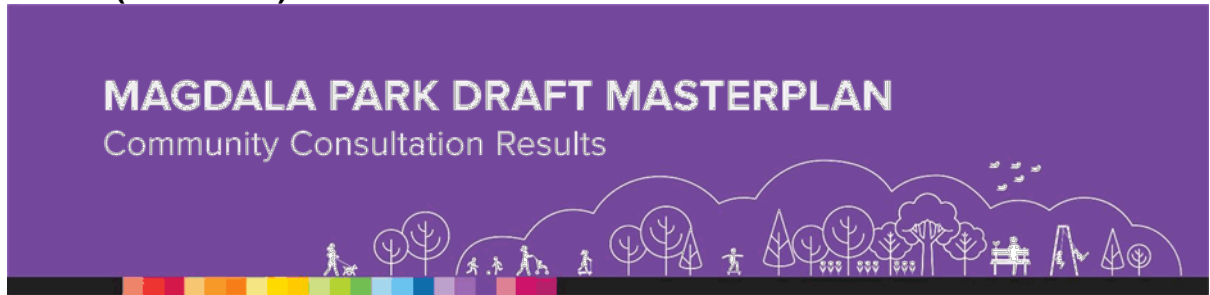


FEEDBACK ON MAGDALA PARK DRAFT MASTERPLAN



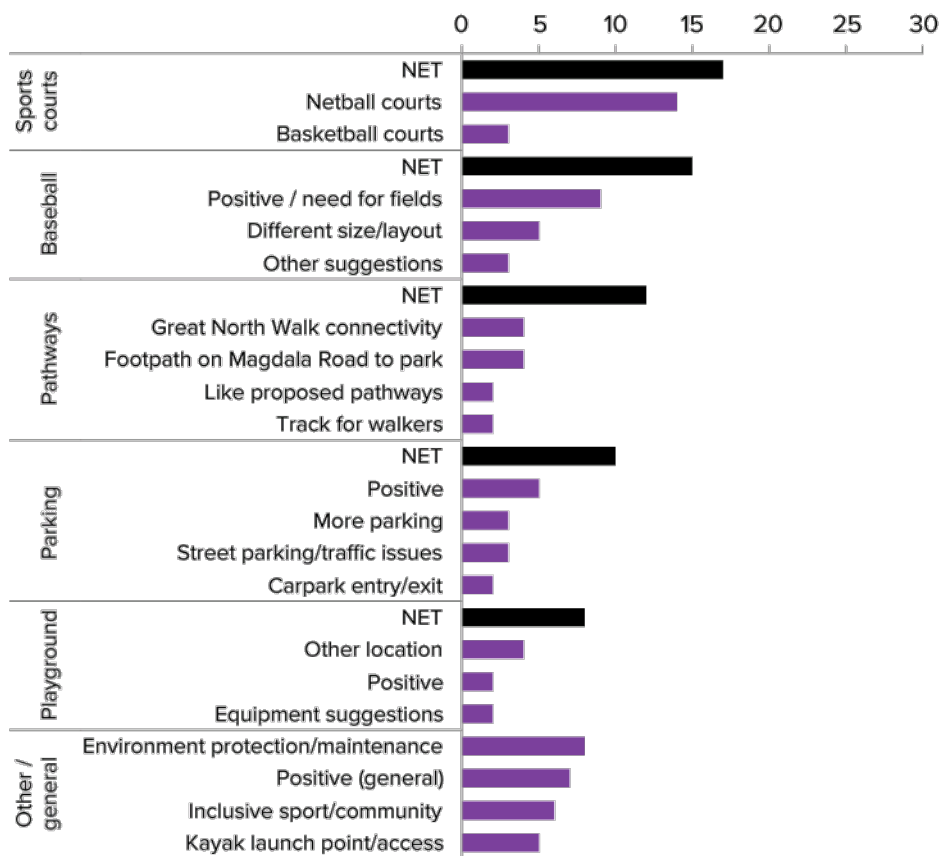
ITEM 3 (continued)

ATTACHMENT 3



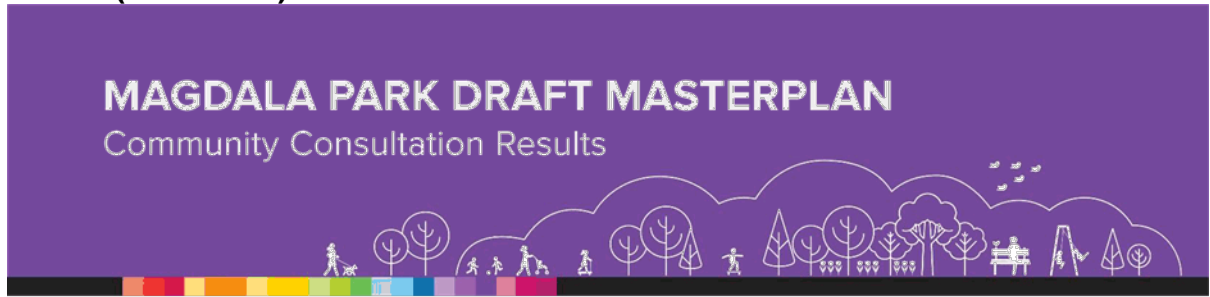
FEEDBACK ON MAGDALA PARK DRAFT MASTERPLAN

(n=84):

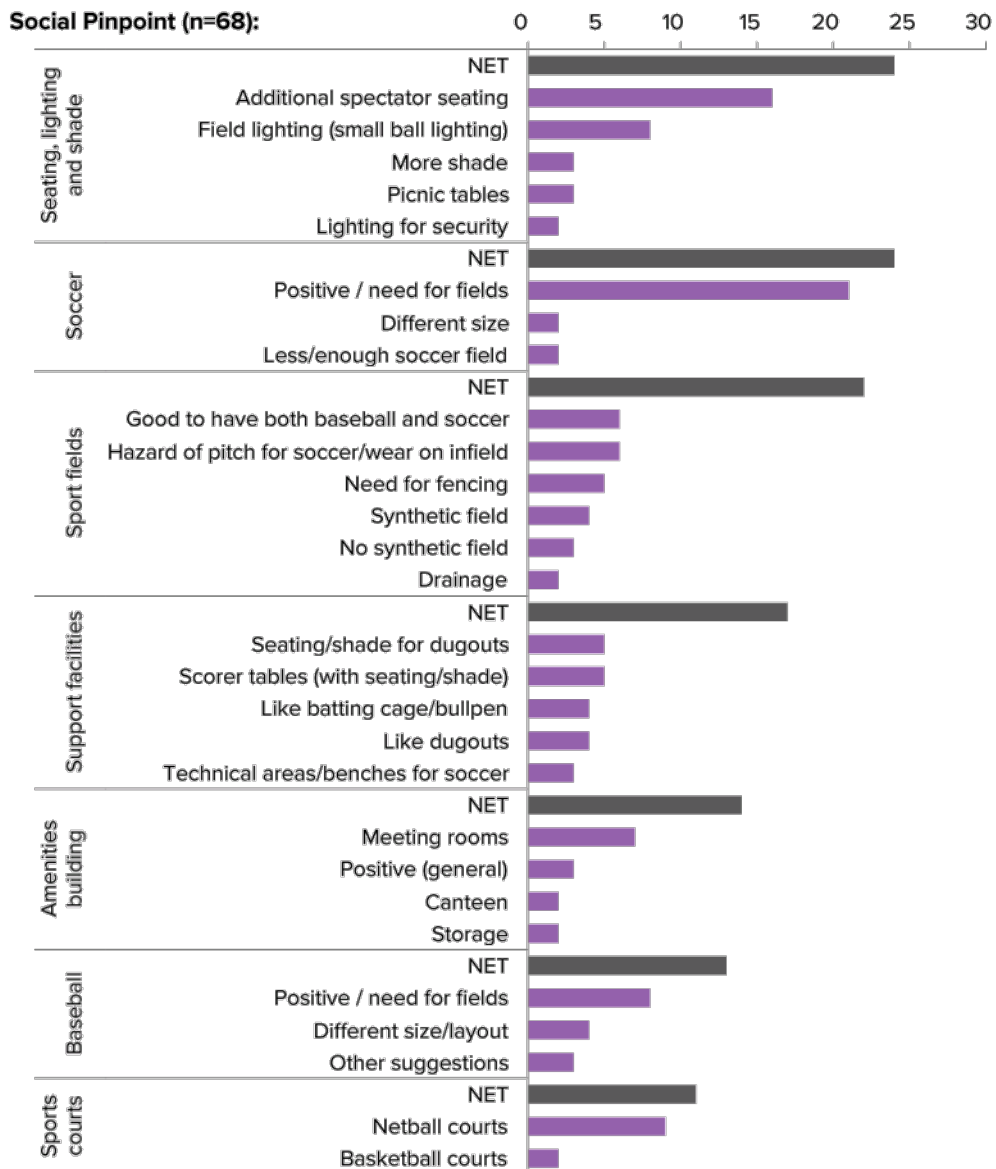


ITEM 3 (continued)

ATTACHMENT 3

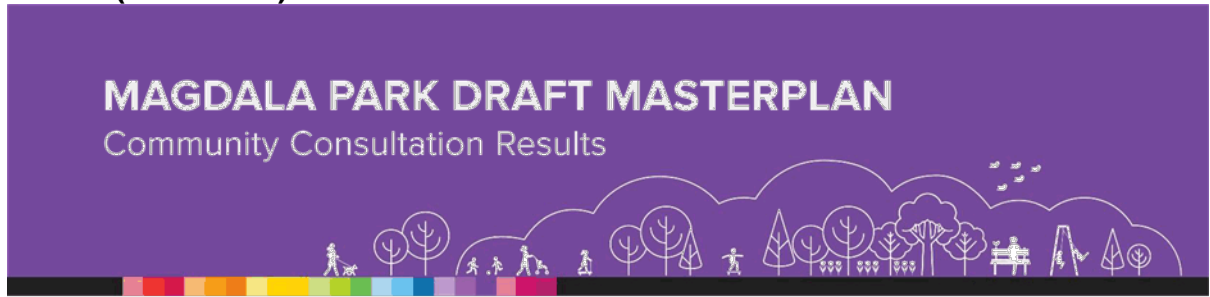


FEEDBACK ON MAGDALA PARK DRAFT MASTERPLAN, BY SOURCE



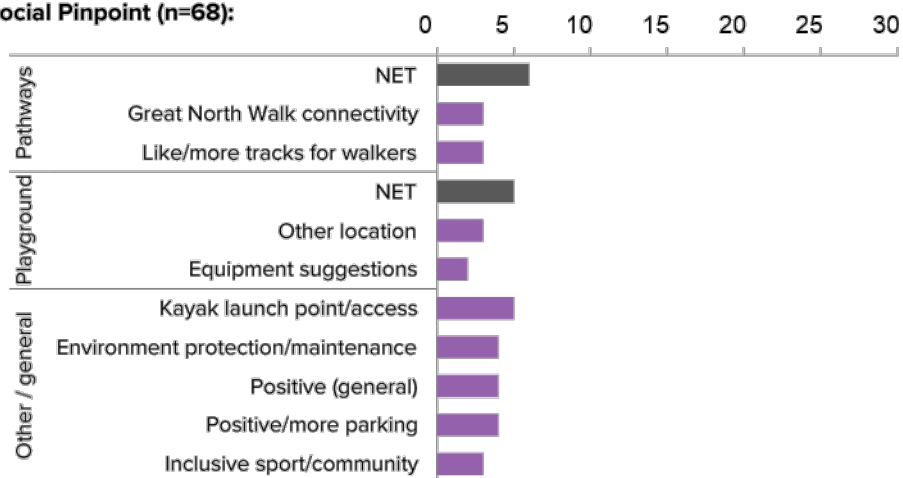
ITEM 3 (continued)

ATTACHMENT 3



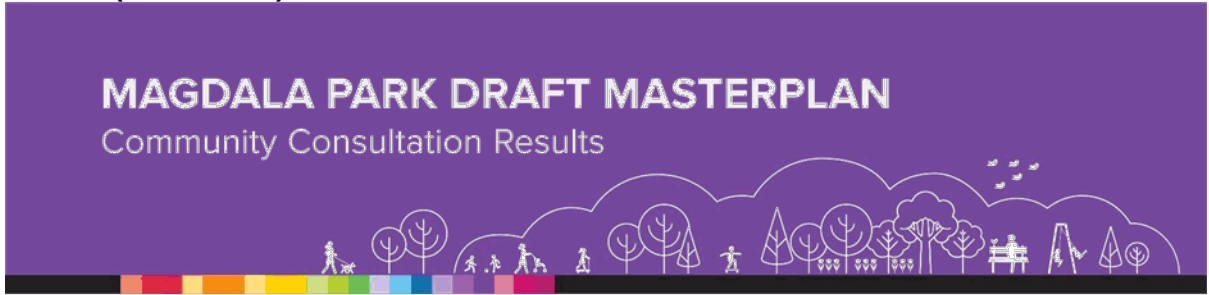
FEEDBACK ON MAGDALA PARK DRAFT MASTERPLAN, BY SOURCE

Social Pinpoint (n=68):



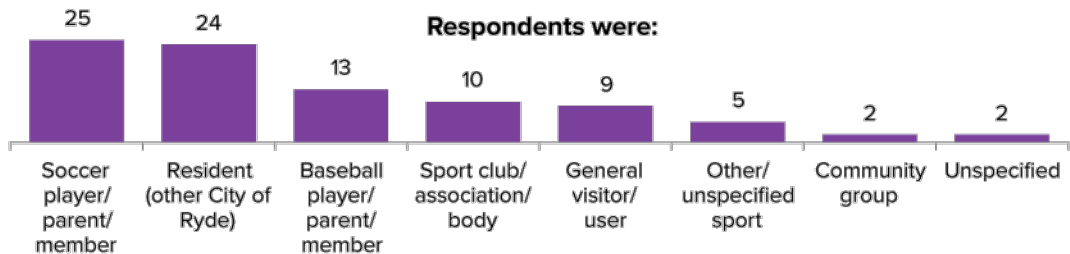
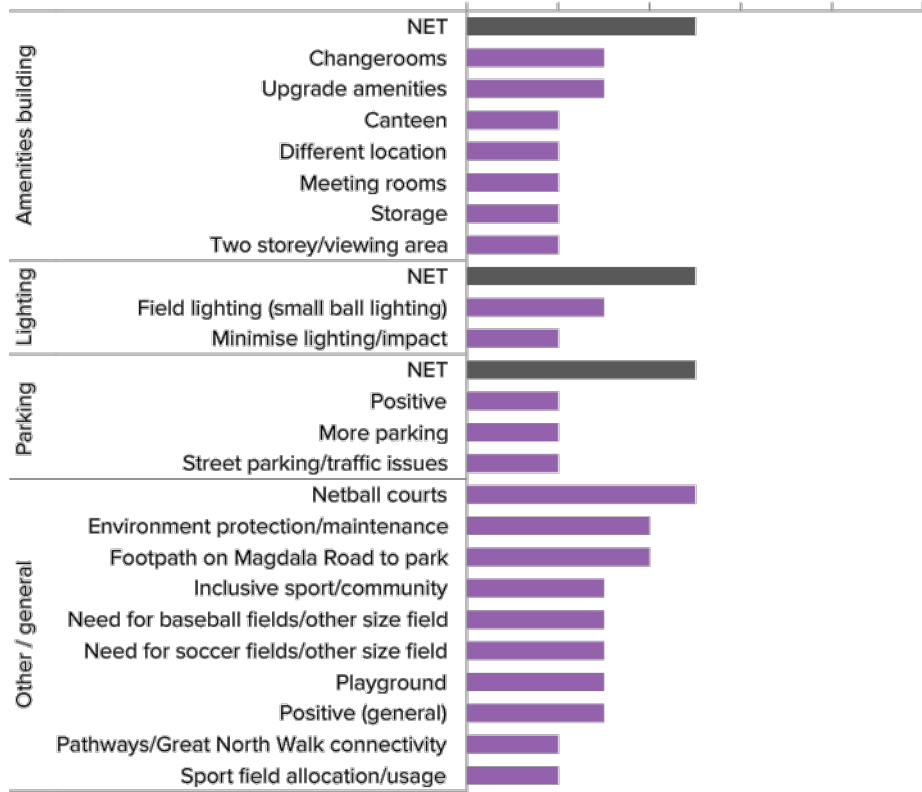
ITEM 3 (continued)

ATTACHMENT 3



FEEDBACK ON MAGDALA PARK DRAFT MASTERPLAN, BY SOURCE

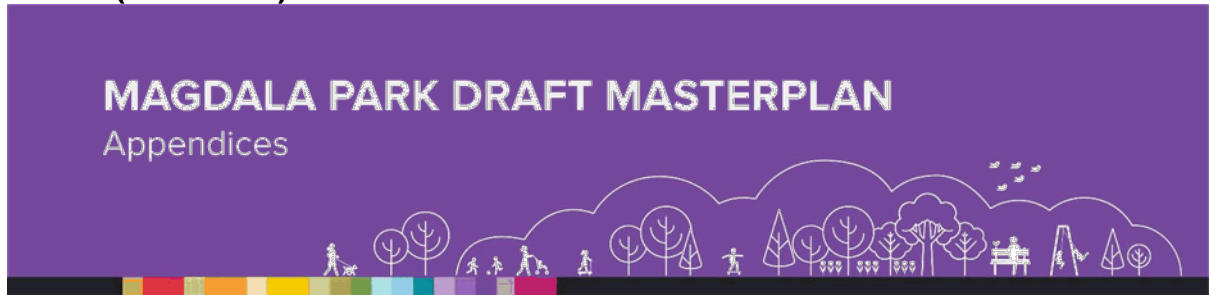
Email and phone submissions (n=17): 0 2 4 6 8 10



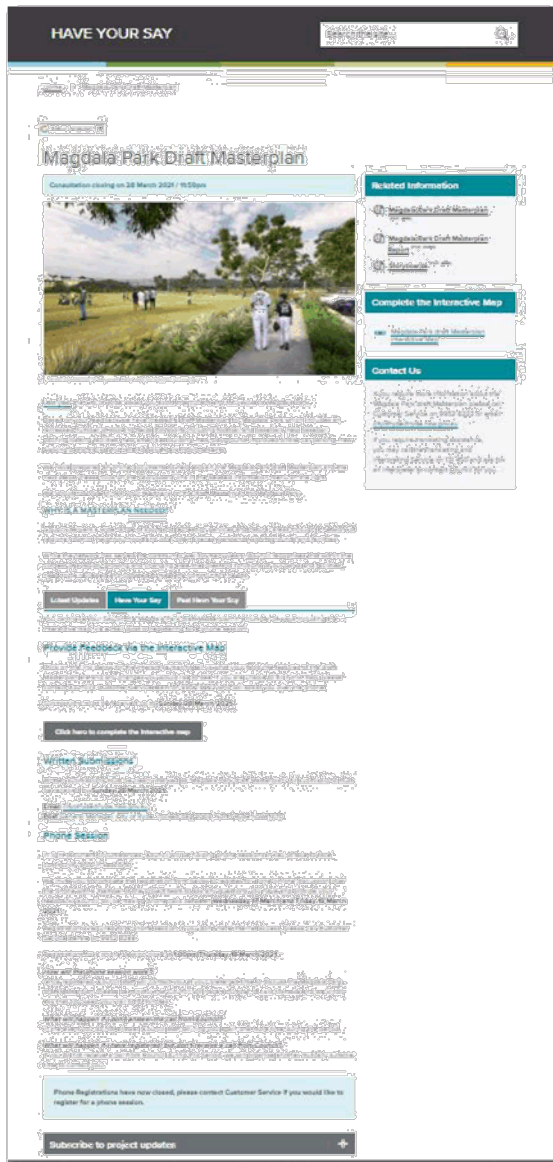
Note: Respondents may be included in multiple categories, hence total may not add to total respondents

ITEM 3 (continued)

ATTACHMENT 3

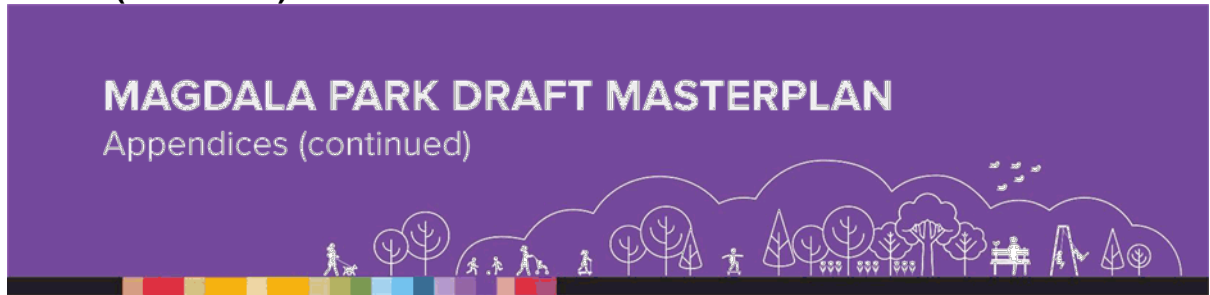


HAVE YOUR SAY WEBSITE



ITEM 3 (continued)

ATTACHMENT 3



HAVE YOUR SAY NEWSLETTER

Magdala Park Draft Masterplan

Last year the City of Ryde asked you about the current and future use of Magdala Park. Based on your feedback we have created a draft Masterplan for Magdala Park which includes an increased number of sporting fields for sports including football and baseball, new baseball pitching/batting facilities, new amenities building, new playground, improved on-site car parking, new walking paths/tracks and other passive park improvements.

We would now like to hear your feedback on the draft Masterplan for Magdala Park.

Why is a Masterplan needed?

Council delivers a wide range of sport and recreation services and natural areas through a network of regional, district, neighbourhood and local open spaces, parklands, sportsgrounds and facilities.

While the network has served the community well for many years, Council recognises that within the context of a rapidly growing and changing area, the roles and functions of our parks and facilities need to be reviewed and updated to meet the community's needs.

Have Your Say

You can Have Your Say on the Magdala Park draft Masterplan in a number of ways, including online, email, post or by registering for a one-on-one phone session.

Online Interactive Map

Use the interactive map to tell us what your favourite features of the draft Masterplan are and any changes you would like to see.

The map will be available online until Sunday 28 March 2021.

[Provide Feedback via Interactive Map](#)

Written Submissions

Written submissions must be clearly marked as 'Magdala Park Draft Masterplan' and can be sent to:

Email: cityofryde@ryde.nsw.gov.au
Post: General Manager, City of Ryde, Locked Bag 2050, North Ryde NSW 1570

All submissions must be received by Sunday 28 March 2021.

Phone Sessions

In light of current circumstances, Council will be holding phone sessions in lieu of face-to-face community drop-in sessions.

We invite you to register for a one-on-one discussion over the phone with a member of the project team to ask any questions you have and provide your feedback. Council will be making phone calls between Wednesday 17 March and Friday 19 March 2021.

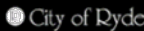
Registration is required for a phone session. Please click on link below to register for a session, noting your preferred time for a call back. If you don't have internet access, please call Customer Service Centre on 0952 0222.

Registrations for a phone session close at 1.00pm Thursday 18 March 2021.

[Register for a Phone Session](#)

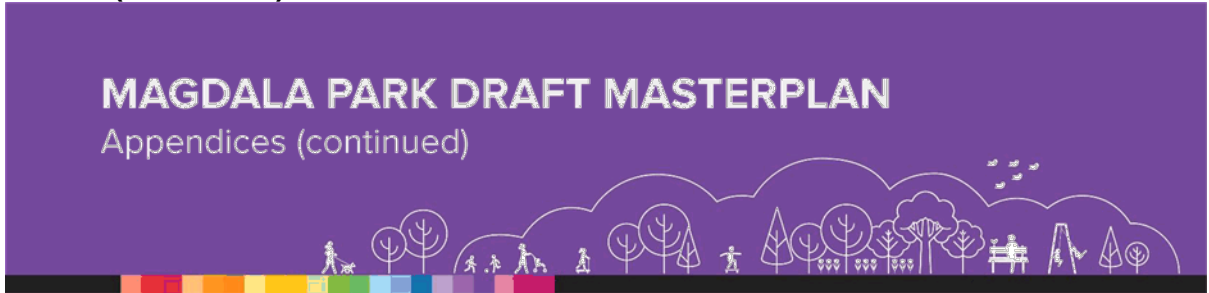
For more information

If you require more information about the Magdala Park draft Masterplan, please visit www.ryde.nsw.gov.au/haveyoursay/MagdalaPark or call Customer Service on 0952 0222.



ITEM 3 (continued)

ATTACHMENT 3



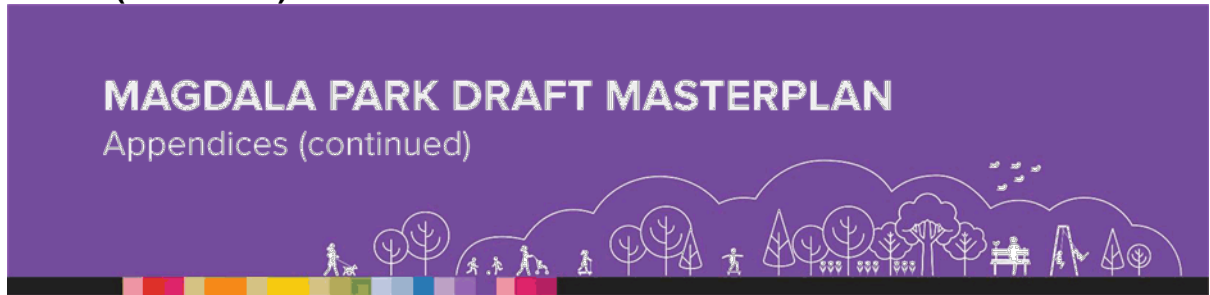
A4 FLYER (CONTINUED)

Flyer distribution area



ITEM 3 (continued)

ATTACHMENT 3



PARK SIGNAGE

MAGDALA PARK DRAFT MASTERPLAN

Appendices (continued)



Last year the City of Ryde asked for your input, views and thoughts on the current and future use of Magdala Park.

Based on your feedback we have created a draft Masterplan for Magdala Park which includes an increased number of sporting fields for sports including football and baseball, new baseball pitching/batting facilities, new amenities building, new playground, improved on-site car parking, new walking paths/tracks and other passive park improvements.

We would now like to hear your feedback on the draft Masterplan for Magdala Park.



How do I give my feedback?

You can Have Your Say on the Magdala Park draft Masterplan in a number of ways including:

Online Via the interactive map at www.ryde.nsw.gov.au/haveyoursay/MagdalaPark or scan the QR code.

Email cityofryde@ryde.nsw.gov.au

Post General Manager, City of Ryde, Locked Bag 2069 North Ryde 1670

Written submissions must be clearly marked 'Magdala Park draft Masterplan'.

Submissions must be received by **Sunday 28 March 2021**.

Scan the QR code to view the interactive map



한국어
한국어
QR code for translated
information





Phone sessions

We invite you to register for a one-on-one discussion over the phone with a member of the project team to ask any questions you may have and provide your feedback.

Council will be making phone calls between **Wednesday 17 March and Friday 19 March 2021**.

Registration is required for a phone session, please note your preferred time for a call back at www.ryde.nsw.gov.au/haveyoursay/MagdalaPark

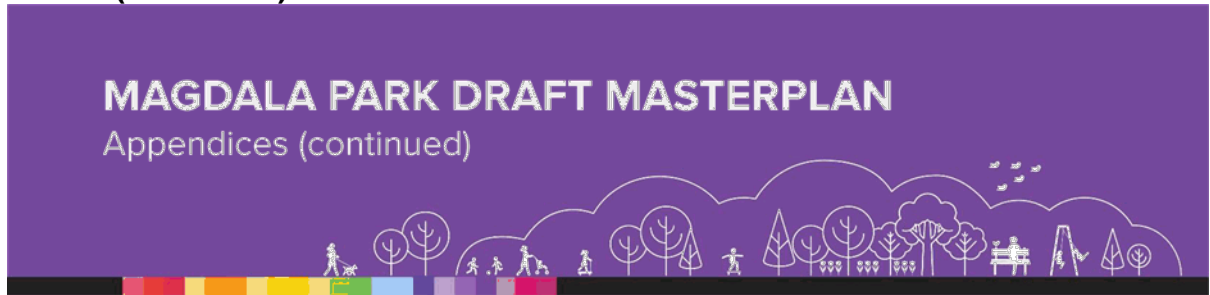
Registrations close at 1.00pm **Thursday 18 March 2021**



For more information
Visit www.ryde.nsw.gov.au/haveyoursay/MagdalaPark
Call Customer Service on 9952 8222 or email cityofryde@ryde.nsw.gov.au

ITEM 3 (continued)

ATTACHMENT 3



**NEWSPAPER AD - OPEN COMMUNITY CONSULTATIONS
THE WEEKLY TIMES**

HAVE YOUR SAY

OPEN COMMUNITY CONSULTATIONS

You are invited to have your say about documents, projects and proposals that are currently on public exhibition, or provide feedback on services and concerns that affect the community.

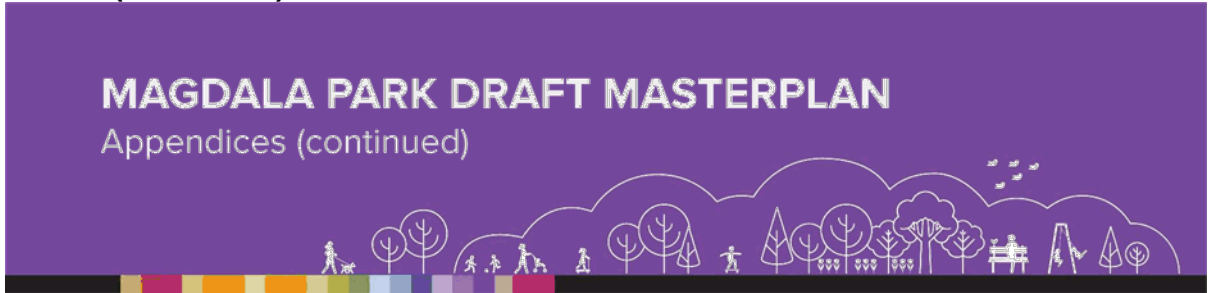
- Santa Rosa Park BBQ and Picnic Facilities (Closing 28 March 2021)
- Magdala Park Draft Masterplan (Closing 28 March 2021)
- Gordon Crescent Road Upgrade Between East Parade and Sixth Avenue (Closing 31 March 2021)
- NSW Government: NSW Water Quality Objectives Survey (Closing 31 March 2021)
- Dog Off Leash Trial (Closing 11 April 2021)
- Devlin Street Pedestrian Bridges
- Graffiti Vandalism in the City of Ryde
- Immunisation Clinic Customer Experience Survey
- Traffic & Parking Around Schools

Want to find out more?

To find out more about one of the above projects or for information on how to provide feedback, please visit www.ryde.nsw.gov.au/haveyoursay or call Customer Service on 9952 8222.

ITEM 3 (continued)

ATTACHMENT 3

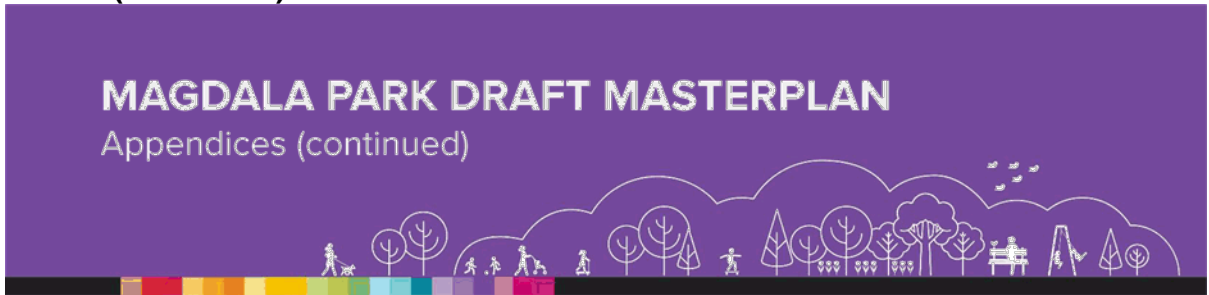


FACEBOOK AD

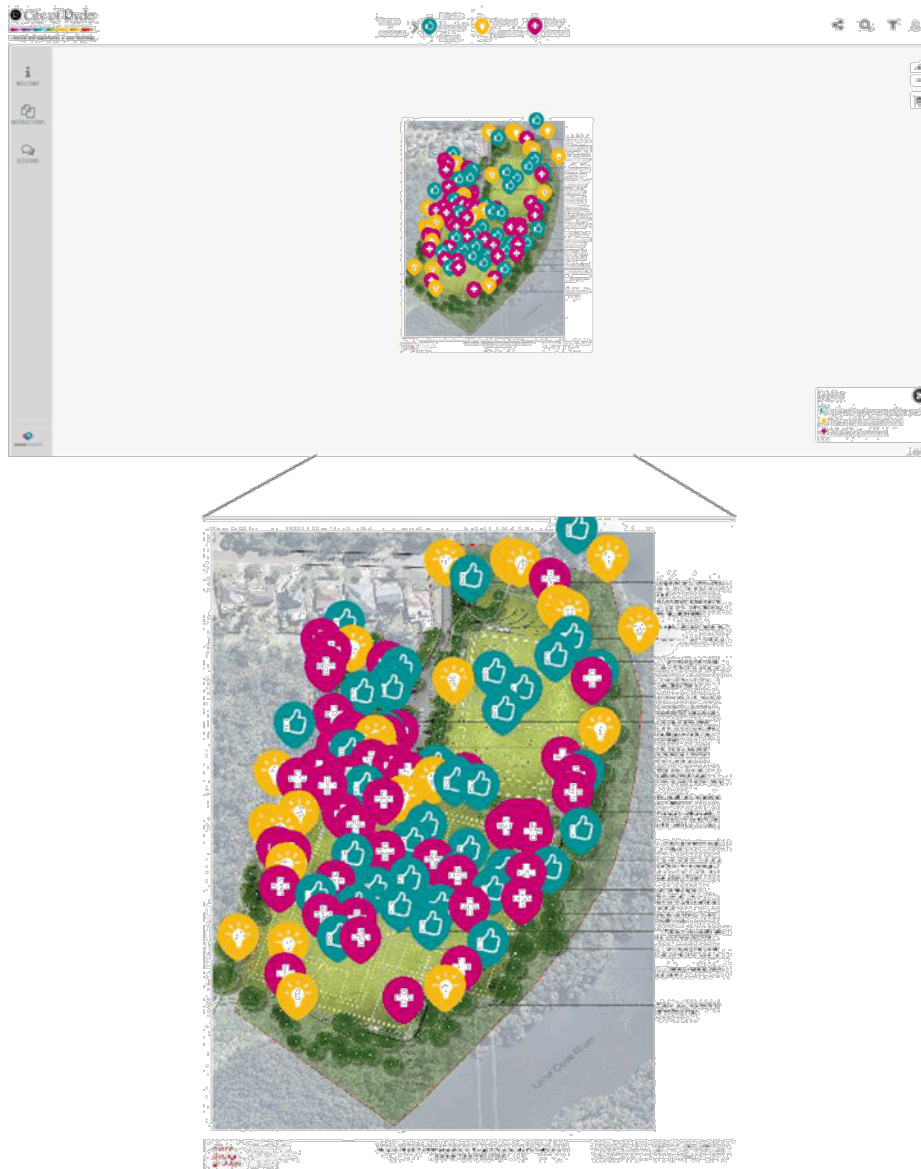


ITEM 3 (continued)

ATTACHMENT 3



SOCIAL PIN-POINT RESULTS



ITEM 3 (continued)

ATTACHMENT 4



Place Design Group Pty Ltd
100/100-100 Pittwater Avenue
Sydney NSW 1585 Australia
T +61 2 9550 8200
F +61 2 9550 4960

Magdala Park Draft Masterplan for Stage 2 Community Consultation
Magdala Park, North Ryde



DATE	PROJECT NO.	REVISION	DWG NO.
03/03/2021	22202613	05	LA-CD-003
0	0	0	0

ITEM 3 (continued)

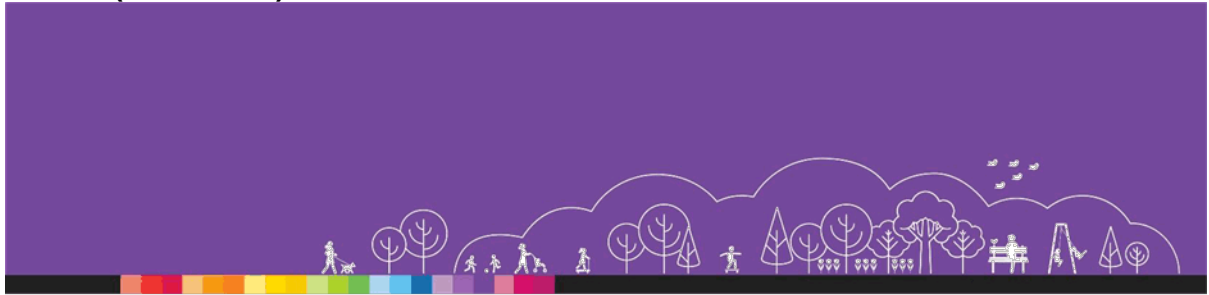
ATTACHMENT 5



STAGE 1
COMMUNITY CONSULTATION REPORT
SEPTEMBER 2020

ITEM 3 (continued)

ATTACHMENT 5



CITY OF RYDE | Magdala Park Masterplan – Stage 1 Community
Consultation Report
September 2020 © City of Ryde

DISCLAIMER

While every reasonable effort has been made to ensure that this document is correct at the time of printing, the City of Ryde, its agents and employees, disclaim any and all liability to any person in respect of anything or the consequences of anything done or omitted to be done in reliance or upon the whole or any part of this document.

COPYRIGHT NOTICE

If you wish to reproduce, alter, store or transmit material appearing in this submission document for any purpose, requests for formal permission should be directed to the General Manager, City of Ryde.

ITEM 3 (continued)

ATTACHMENT 5



Executive Summary	3
Background	4
Community Consultation Timeline	5
Community Consultation Methodology	6-7
Community Consultation Results	8-14
Appendices	
• Website	15
• Have Your Say eNewsletter	16
• A4 Flyer	17
• Park Signage	18
• Newspaper Ad	19
• Facebook Ad	20
• Social Pinpoint Results	21



ITEM 3 (continued)

ATTACHMENT 5



The City of Ryde is currently developing a Masterplan for Magdala Park. A Masterplan provides the framework for how the park will be upgraded over the next 20 years. This strategic plan aims to meet the current and future needs of the community and user groups, while ensuring sustainable and efficient use and ecological outcomes.

The park currently includes a sportsground with sports field lighting, an amenities building, a car park, local playground and picnic shelter.

The purpose of this Stage 1 community consultation is for Council to understand the current and likely future recreation, leisure and sporting needs of the Ryde community in order to develop a draft Masterplan for Magdala Park.

City of Ryde's community engagement team conducted the Stage 1 community consultation process to gather feedback from the community to inform the draft Masterplan design for Magdala Park.

Stage 1 community consultation was conducted from 10 August to 30 August 2020 during which the community could provide comment and suggestions via an online interactive map, paper form or provide feedback at a registered phone session with Council staff. This was promoted through City of Ryde's Have Your Say website, flyers to surrounding residents, an eNewsletter to stakeholders, signage in the park and an advertisement in the local newspaper.

In light of the COVID-19 pandemic, Council trialed one-on-one phone sessions in lieu of face-to face drop-in sessions. Community members could register for a one-on-one phone discussion with a member of the parks team to provide feedback and ask any questions.

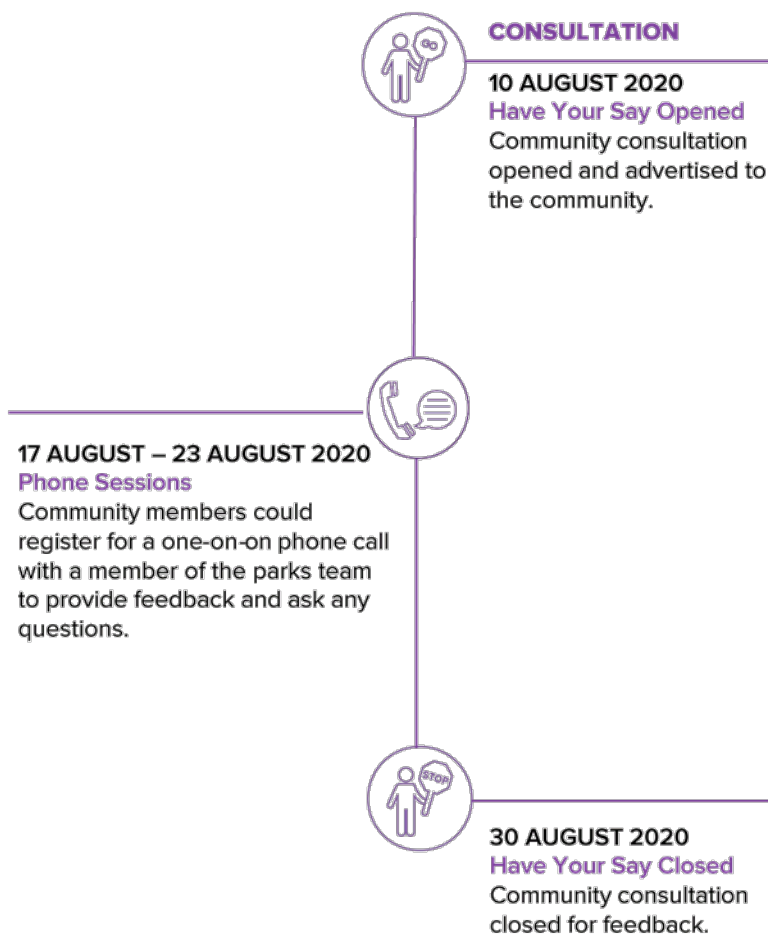
In total 256 comments were received from the community with 217 comments from the online interactive map, 36 email submissions and 3 phone submissions.

Through the Stage 1 community consultation, respondents expressed support for keeping soccer at Magdala Park, while others expressed support for upgrading and expanding baseball facilities at the park. Improvements to supporting facilities included an expanded car park, an upgraded and relocated amenities building and additional pathways within and to the park.

The feedback from this Stage 1 community consultation will be used to inform the draft Masterplan for Magdala Park. Once the draft Masterplan has been prepared, the community will be provided with an opportunity to provide feedback via a Stage 2 community consultation.

ITEM 3 (continued)

ATTACHMENT 5



ITEM 3 (continued)

ATTACHMENT 5



Date	Tool	Stakeholders	Overview	Engagement
Mon 10 Aug to Sun 30 Aug 2020	Have Your Say Website	Website users	A project webpage with background information, online survey and project updates.	1,614 page views and 1,381 unique visits
Mon 10 Aug to Sun 30 Aug 2020	Social Pinpoint	Website users	An online interactive map where stakeholders can provide comments and suggestions on the site. This was accessed through Council's Have Your Say webpage.	107 online respondents 217 online comments
Mon 10 Aug to Sun 30 Aug 2020	Park Signage	Magdala Park users	Park signage was placed to promote the project and feedback opportunities for park users and interested stakeholders.	3 signs at entry points of the park
Mon 10 Aug 2020	A4 Flyer	Surrounding residents – adjacent to park (500m radius)	An A4 flyer was letterbox dropped to promote the project and feedback opportunities for surrounding local residents. The flyer included a paper form that residents could mail back to Council.	40 flyers approximately
Mon 10 Aug 2020	Have Your Say eNewsletter	Internal and external stakeholders, sports clubs and community groups	A targeted eNewsletter was sent to relevant community stakeholders to provide an opportunity to give their feedback.	76 eNewsletters distributed 50 eNewsletters opened
Tues 11 Aug to Mon 17 Aug 2020	Facebook Ad	Online Facebook users	Social media advertisement to promote the project and consultation opportunities for all stakeholders.	9,914 users reached 735 users engaged

ITEM 3 (continued)

ATTACHMENT 5



Date	Tool	Stakeholders	Overview	Engagement
Wed 12, 19, 26 August 2020	Open Community Consultations Ad Northern District Times	Newspaper subscribers	Newspaper advertisement to promote the project and consultation opportunities for all stakeholders.	38,000 total print readership
Mon 17 Aug 2020- Sun 23 Aug 2020	Registered phone sessions	All interested stakeholders	One-on-one discussion over the phone with a member of the project team to ask any questions and provide feedback about the project.	3 registered attendees who provided 3 comments
Mon 10 Aug to Sun 30 Aug 2020	Information phone line and email	All Stakeholders	The City of Ryde main phone and email address was provided for the project and was open for feedback from the community.	36 submissions received



ITEM 3 (continued)

ATTACHMENT 5



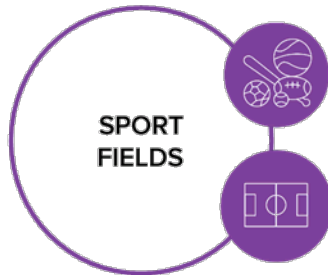
217
SOCIAL
PINPOINT COMMENTS



36
EMAIL
SUBMISSIONS



3
PHONE
SUBMISSIONS



Magdala Park was recognised as a good field, with requests to keep **soccer** at the park. Other respondents noted they would like to see **baseball** facilities upgraded and expanded at Magdala Park.

The inclusion of a **synthetic field** and improving **drainage** was noted improve the field.



Current **parking and pedestrian safety** issues were a key concern, with many noting that the car park should be extended with improved entry and exits.

New and upgraded **pathways** within and to the park were commonly suggested.



Relocating and upgrading the **amenities building** (including a canteen, storage, change rooms and other multi-use facilities) would improve safety and convenience.

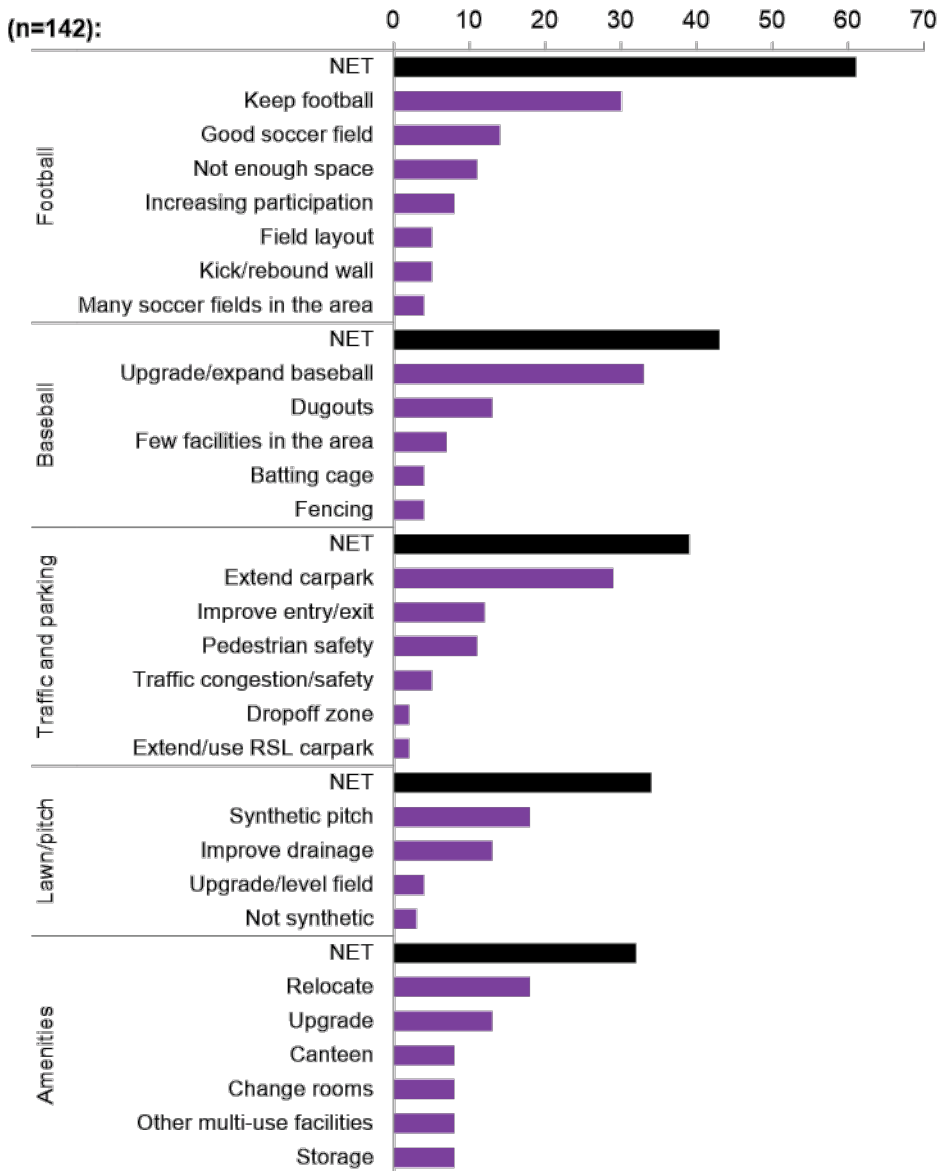
The need for additional or improved **seating, lighting and shaded** areas was commonly noted.

ITEM 3 (continued)

ATTACHMENT 5



FEEDBACK ON MAGDALA MASTERPLAN

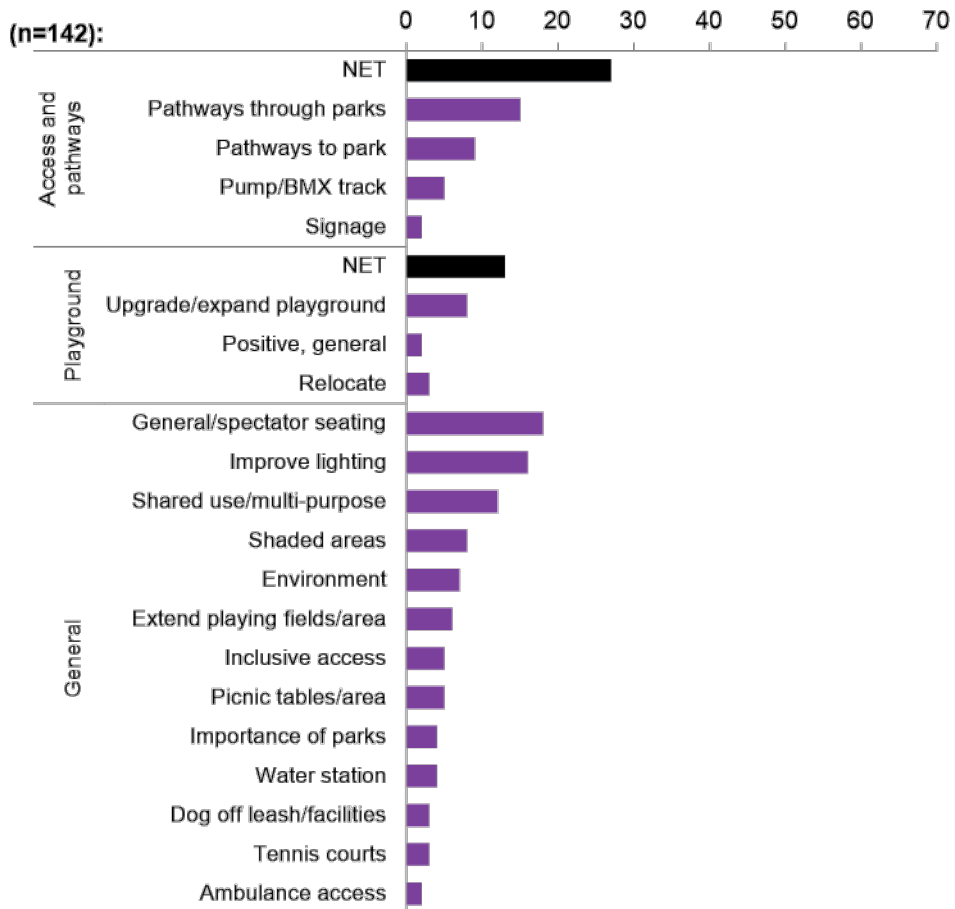


ITEM 3 (continued)

ATTACHMENT 5



FEEDBACK ON MAGDALA MASTERPLAN

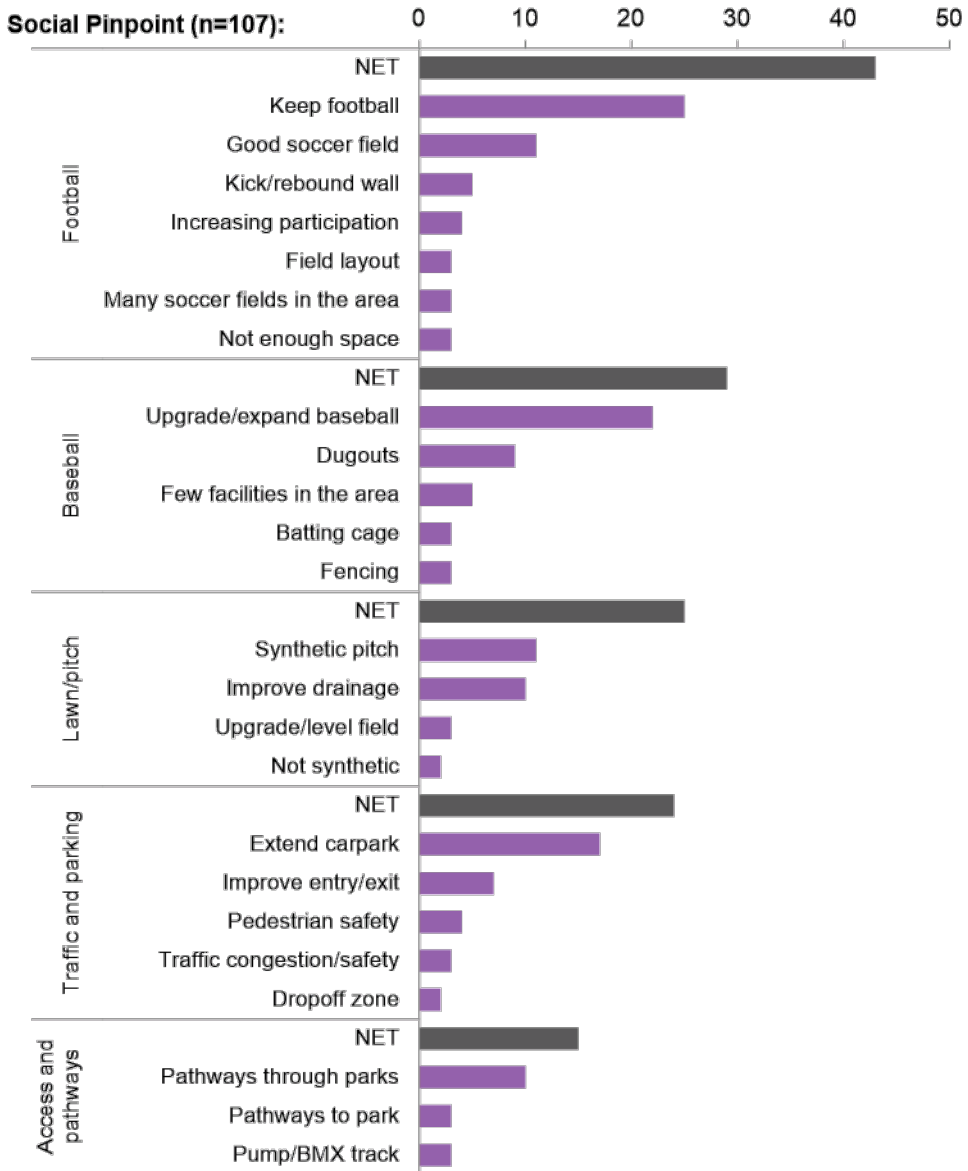


ITEM 3 (continued)

ATTACHMENT 5



FEEDBACK ON MAGDALA MASTERPLAN, BY SOURCE

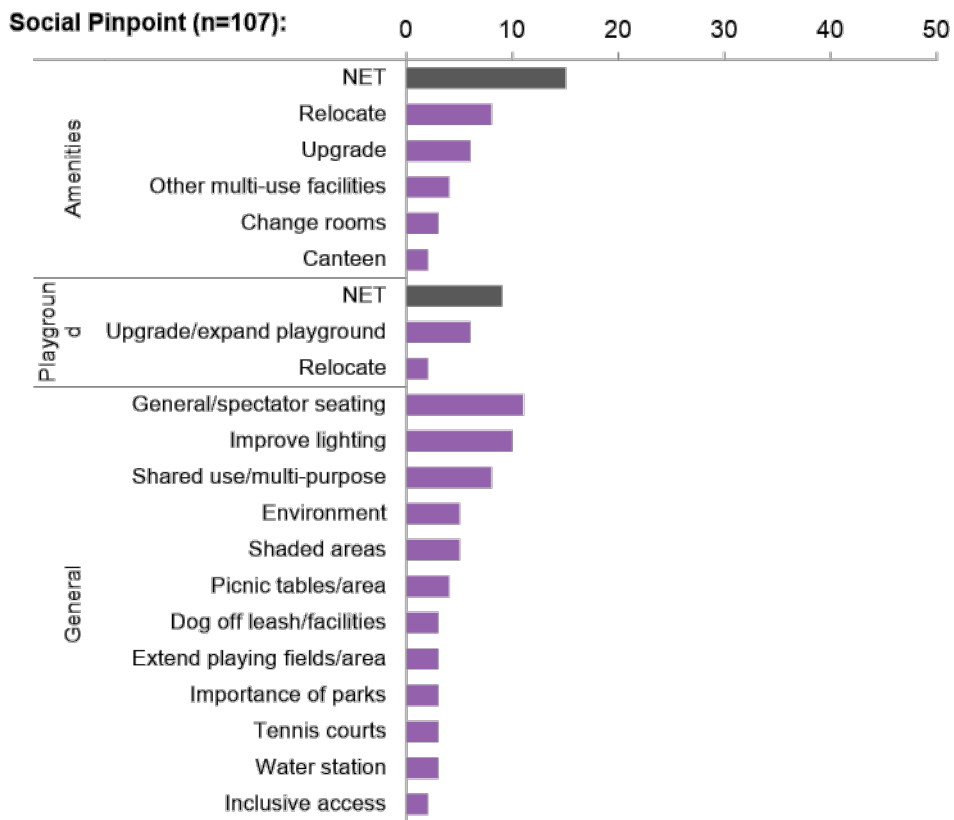


ITEM 3 (continued)

ATTACHMENT 5



FEEDBACK ON MAGDALA MASTERPLAN, BY SOURCE



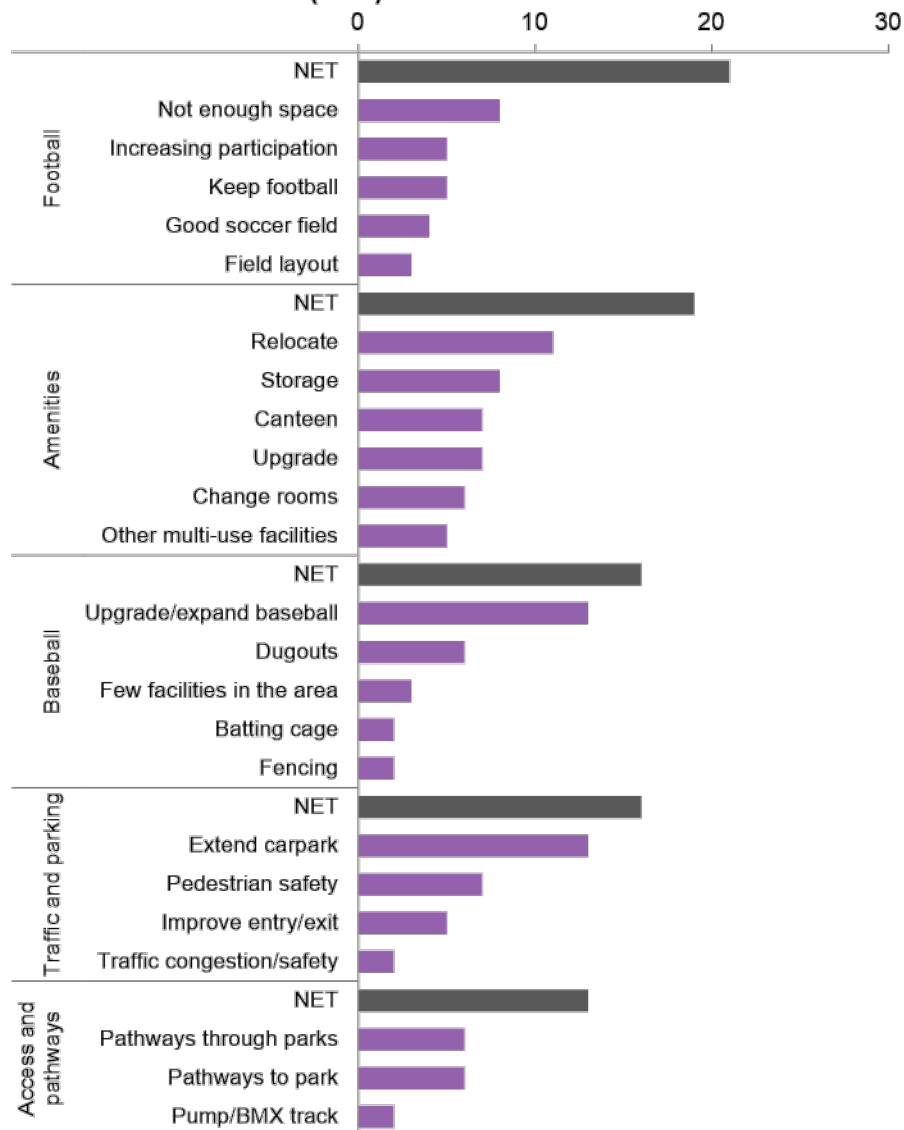
ITEM 3 (continued)

ATTACHMENT 5



FEEDBACK ON MAGDALA MASTERPLAN, BY SOURCE

Written/Phone Submissions (n=39):



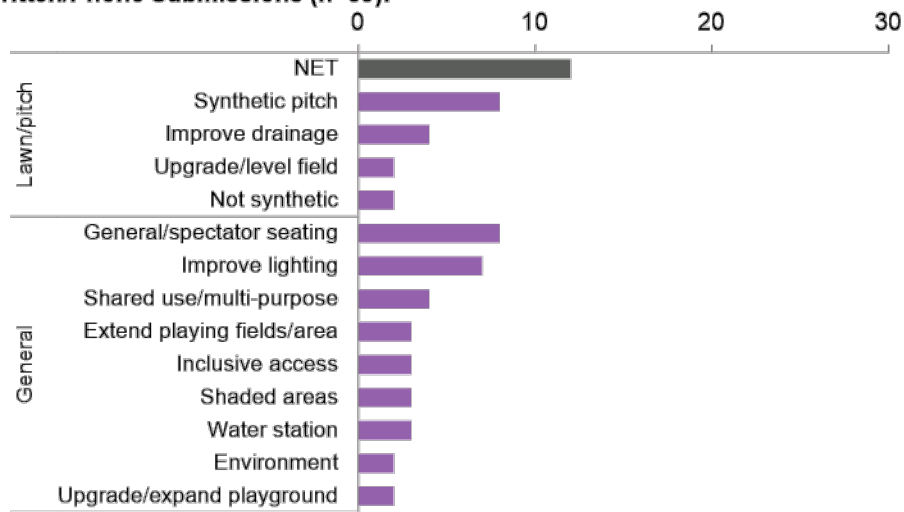
ITEM 3 (continued)

ATTACHMENT 5



FEEDBACK ON MAGDALA MASTERPLAN, BY SOURCE

Written/Phone Submissions (n=39):



ITEM 3 (continued)

ATTACHMENT 5



HAVE YOUR SAY WEBSITE

HAVE YOUR SAY

Magdala Park Masterplan

Consultation closed on 30 August 2020

Complete the Interactive Map

[Magdala Park Masterplan Interactive Map](#)

Contact Us

If you require more information about the Magdala Park Masterplan please call Customer Service on 9952 8222 or email cityofryde@ryde.nsw.gov.au

WHY IS A MASTERPLAN NEEDED?

Council delivers a wide range of sports and recreation services and related areas through a network of regional, district, neighbourhood and local open spaces, parks, sports grounds and facilities. While the network has served the community well for many years, Council recognises that within the context of a rapidly growing and changing area, the roles and functions of our parks and facilities need to be reviewed and updated to meet the community's needs.

Latest Updates | **Have Your Say**

Have Your Say is now closed

Published on 24 August 2020

The Have Your Say Magdala Park Masterplan has now closed.

Have Your Say is now open

Published on 24 August 2020

Have Your Say on the Magdala Park Masterplan is open until Sunday 30 August 2020.

Subscribe to project updates

Last updated on 24 August 2020

Contact Us

Customer Service Centre
1 Pope Street, Ryde NSW 2112
Phone: 9952 8222
After Hours Assistance: 9952 8222
Email: cityofryde@ryde.nsw.gov.au
[View More Details](#)

Share & Connect

- [facebook.com/cityofryde](https://www.facebook.com/cityofryde)
- twitter.com/cityofryde
- [youtube.com/CityofRydeCouncil](https://www.youtube.com/CityofRydeCouncil)
- [instagram.com/cityofryde](https://www.instagram.com/cityofryde)
- [pinterest.com/cityofryde](https://www.pinterest.com/cityofryde)

ITEM 3 (continued)

ATTACHMENT 5



HAVE YOUR SAY NEWSLETTER

City of Ryde **Have your SAY**

Magdala Park Masterplan

The City of Ryde is seeking your input to create a Masterplan for Magdala Park. We would like to hear what you currently like about Magdala Park, ideas and suggestions for how the park can be improved, managed and maintained now and into the future.

Located in North Ryde, Magdala Park currently contains a sportsground with sports field, lighting, amenities building, car park, local playground and picnic shelter.

Why is a Masterplan needed?

Council delivers a wide range of sport and recreation services and natural areas through a network of regional, district, neighbourhood and local open spaces, parklands, sportsgrounds and facilities.

While the network has served the community well for many years, Council recognises that within the context of a rapidly growing and changing area, the roles and functions of our parks and facilities need to be reviewed and updated to meet the community's needs.

Have Your Say

You can Have Your Say on the Magdala Park Masterplan in a number of ways including online, email, post or by registering for a one-on-one phone session.

Online Interactive Map

Use the interactive map to tell us what your favourite features of the park are and any ideas or suggestions you have. The map will be available online until Sunday 30 August 2020.

[Provide Feedback via Interactive Map](#)

Phone Sessions

In light of current circumstances, Council will be holding phone sessions in lieu of face-to-face community drop-in sessions.

We invite you to register for a one-on-one discussion over the phone with a member of the project team to ask any questions you have and provide your feedback.

Council will be making phone calls between **Monday 17 August and Saturday 22 August 2020**. Registration is required for a phone session. Please click on link below to register for a session, noting your preferred time for a call back.

Registrations close **Friday 21 August at 1:00pm**.

[Register for a Phone Session](#)

Written Submissions

Written submissions must be clearly marked as 'Magdala Park Masterplan' and can be sent to:

Email: cityofryde@ryde.nsw.gov.au
Post: General Manager, City of Ryde, Locked Bag 2065, North Ryde NSW 1670

All submissions must be received by **Sunday 30 August 2020**.

For more information

If you require more information about the Magdala Park Masterplan, please visit www.ryde.nsw.gov.au/haveyoursay/MagdalaPark/ or call Customer Service on 9952 8222.

City of Ryde
Lifestyle and opportunity @ your doorstep

ITEM 3 (continued)

ATTACHMENT 5



A4 FLYER

MAGDALA PARK MASTERPLAN 

The City of Ryde is seeking your input to create a Masterplan for Magdala Park. We would like to hear what you currently like about Magdala Park, ideas and suggestions for how the park can be improved, managed and maintained now and into the future.

Located in North Ryde, Magdala Park currently contains a sportsground with sports field lighting, amenities building, car park, local playground and picnic shelter.



Have YOUR SAY **How do I give my feedback?**
You can Have Your Say on the Magdala Park Masterplan in a number of ways including:

- Online** via the interactive map at www.ryde.nsw.gov.au/haveyoursay/MagdalaPark
- Email** cityofryde@ryde.nsw.gov.au
- Post** City of Ryde, Reply Pad 6520, NORTH RYDE NSW 1670 (you do not need to put a stamp on the envelope)

Feedback will be open until **Sunday 30 August 2020**.

Let's TALK **Phone sessions**
In light of current circumstances, Council will be trialling phone sessions in lieu of face-to-face community drop-in sessions. We invite you to register for a one-on-one discussion over the phone with a member of the project team to ask any questions you have and provide your feedback. Council will be making phone calls between **Monday 17 August** and **Saturday 22 August 2020**. Registration is required for a phone session, please note your preferred time for a call back at www.ryde.nsw.gov.au/haveyoursay/MagdalaPark. If you don't have internet access, please call Customer Service on 9952 8222. Registrations close **Friday 21 August** at 1.00pm.

Have YOUR SAY **Paper Survey**
If you are unable to provide feedback via the online interactive map, please complete and return this paper survey before **Sunday 30 August 2020** by:
Email cityofryde@ryde.nsw.gov.au
Post City of Ryde, Reply Pad 6520, NORTH RYDE NSW 1670 (you do not need to put a stamp on the envelope)



Name:

Email: Suburb:

Please tell us your association with the park e.g. resident, business, visitor, sports club etc.

I like this element of the Park – Tell us what features you currently like about Magdala Park

Ideas and Suggestions – Tell us what you would like to see changed at Magdala Park

Make a comment:

Flyer distribution area




ITEM 3 (continued)

ATTACHMENT 5




PARK SIGNAGE

MAGDALA PARK MASTERPLAN  City of Ryde

The City of Ryde is seeking your input to create a Masterplan for Magdala Park. We would like to hear what you currently like about Magdala Park, ideas and suggestions for how the park can be improved, managed and maintained now and into the future.

Located in North Ryde, Magdala Park currently contains a sportsground with sports field lighting, amenities building, car park, local playground and picnic shelter.



Have YOUR SAY **How do I give my feedback?**

You can Have Your Say on the Magdala Park Masterplan in a number of ways including:

Online via the interactive map at www.ryde.nsw.gov.au/haveyoursay/MagdalaPark

Email cityofryde@ryde.nsw.gov.au

Post City of Ryde, Locked Bag 2069 North Ryde NSW 1670

Feedback will be open until **Sunday 30 August 2020**.


Let's TALK **Phone sessions**

In light of current circumstances, Council will be trialling phone sessions in lieu of face-to-face community drop-in sessions. We invite you to register for a one-on-one discussion over the phone with a member of the project team to ask any questions you have and provide your feedback.

Council will be making phone calls between **Monday 17 August and Saturday 22 August 2020**.

Registration is required for a phone session, please note your preferred time for a call back at www.ryde.nsw.gov.au/haveyoursay/MagdalaPark.

If you don't have internet access, please call Customer Service on 9952 8222. Registrations close **Friday 21 August at 1.00pm**.


City of Ryde

For more information
Visit www.ryde.nsw.gov.au/haveyoursay/MagdalaPark
Call Customer Service on 9952 8222 or email cityofryde@ryde.nsw.gov.au

ITEM 3 (continued)

ATTACHMENT 5



**NEWSPAPER AD - OPEN COMMUNITY CONSULTATIONS
THE WEEKLY TIMES**

HAVE YOUR SAY

OPEN COMMUNITY CONSULTATIONS

You are invited to have your say about documents, projects and proposals that are currently on public exhibition, or provide feedback on services and concerns that affect the community.

- Magdala Park Masterplan (Closing 30 August 2020)
- Rowe Street East Smoke Free Zone Trial (Closing 31 August 2020)
- Devlin Street Pedestrian Bridges
- Graffiti Vandalism in the City of Ryde
- Immunisation Clinic Customer Experience Survey
- Traffic & Parking Around Schools
- Save Our Streets

Want to find out more?

To find out more about one of the above projects or for information on how to provide feedback, please visit www.ryde.nsw.gov.au/haveyoursay or call Customer Service on 9952 8222.

ITEM 3 (continued)

ATTACHMENT 5



FACEBOOK AD



ITEM 3 (continued)

ATTACHMENT 5



SOCIAL PIN-POINT RESULTS



ITEM 3 (continued)

ATTACHMENT 6



Legend

- Closed Road
- ① Note: Area along western boundary owned by NPWS. However, section of parkland is currently maintained by City of Ryde.



Place Design Group Pty Ltd
100/1000 Pittwater Road
Wahroonga NSW 1585
T +61 2 9550 8500
F +61 2 9550 9000

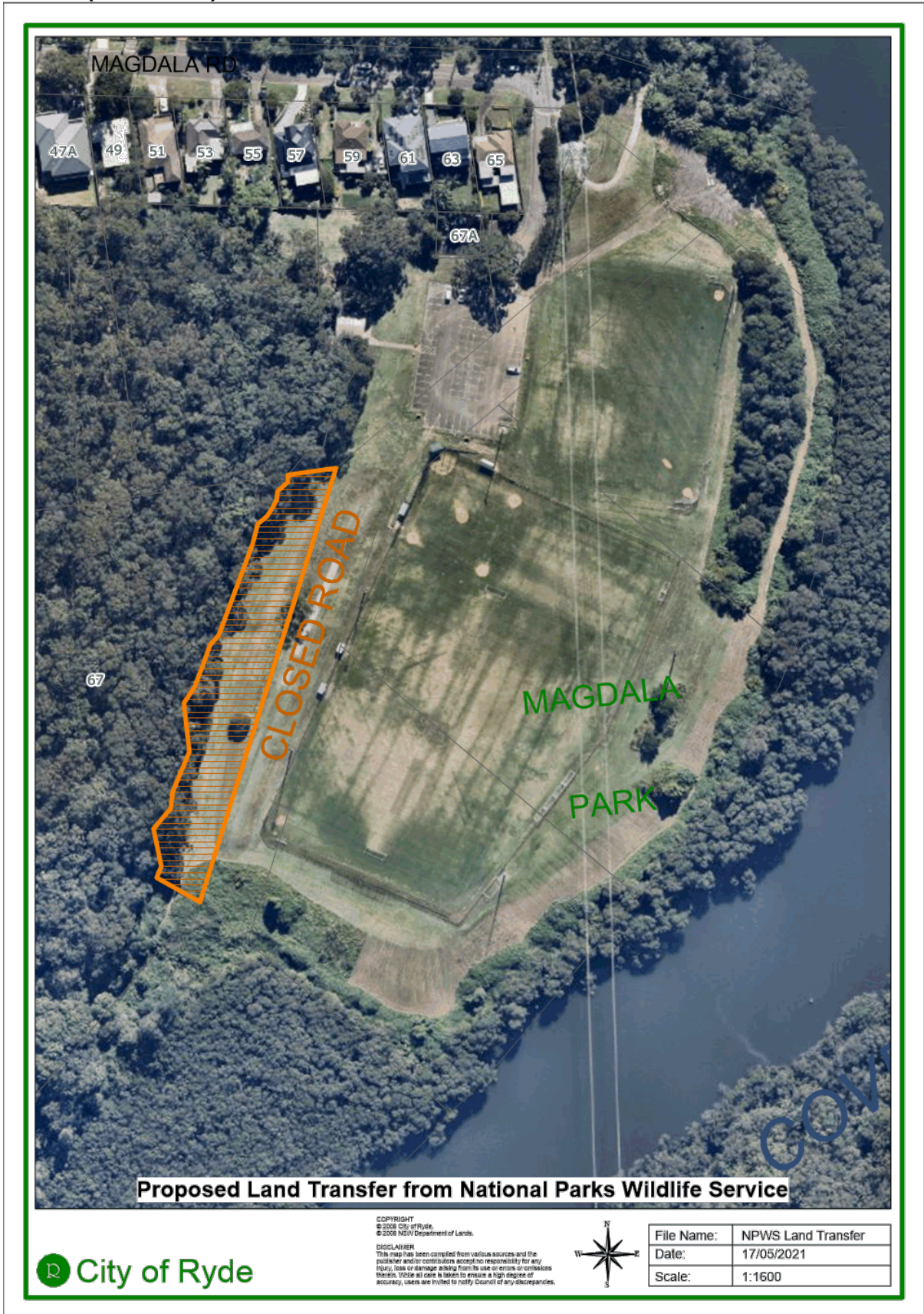
Magdala Park Masterplan - Road Reserve Closure Map
Magdala Park, North Ryde



DATE	PROJECT NO.	REVISION	DWG NO.
17/05/2021	22230413	02	LA-002
0	0	0	0
0	0	0	0

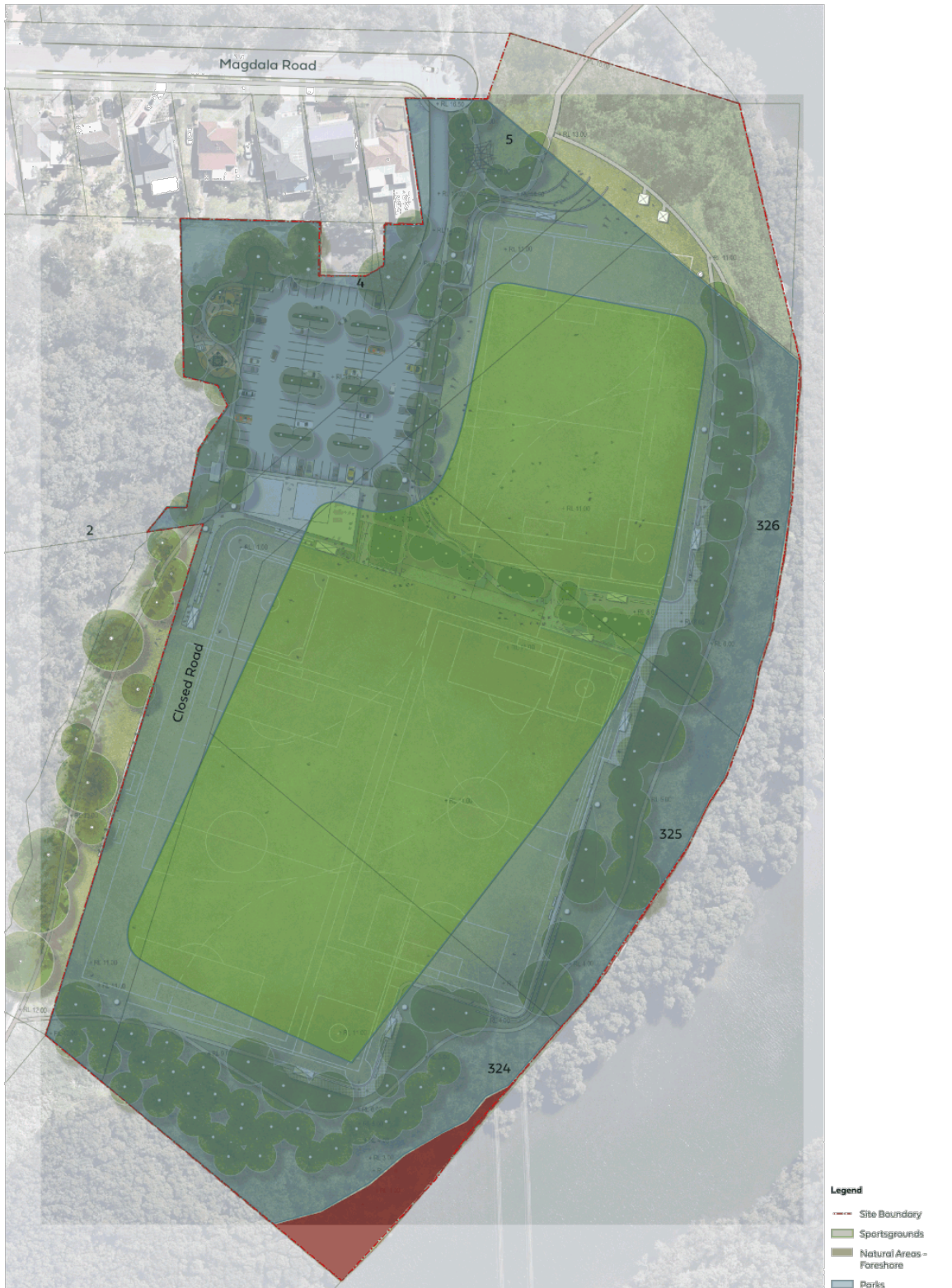
ITEM 3 (continued)

ATTACHMENT 7



ITEM 3 (continued)

ATTACHMENT 8



Place Design Group Pty Ltd
100/1000 Pittwater Avenue
North Sydney NSW 1585
T +61 2 9550 8330
P +61 2 9550 8340

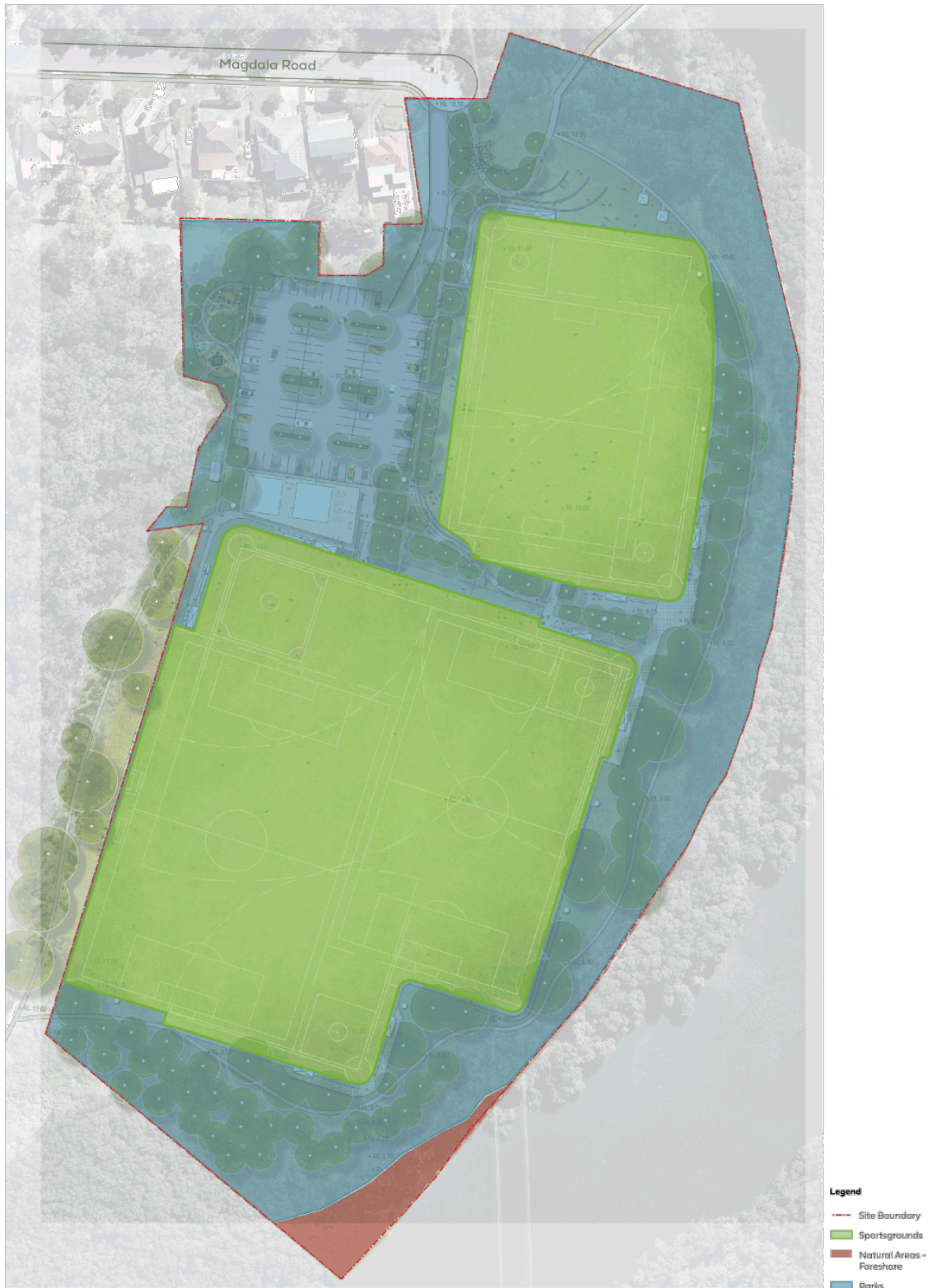
Magdala Park Masterplan - Existing Community Land Categorisation
Magdala Park, North Ryde



DATE	PROJECT NO.	REVISION	DWG NO.
17/05/2021	3253041	02	LA-05LA
0	0	0	0000 1388241

ITEM 3 (continued)

ATTACHMENT 9



Place Design Group Pty Ltd
100/1000 Pacific Highway
North Ryde NSW 1585
T +61 2 9550 8300
P +61 2 9550 8300

Magdala Park Masterplan - Proposed Community Land Categorisation
Magdala Park, North Ryde



DATE	PROJECT NO.	REVISION	DWG NO.
17/05/2021	22230413	02	LA-001
0	0	0	0000 1388241