

SCHOOL ZONE

Term 1, 2021

Road Safety News

Welcome to the first School Zone Newsletter for 2021. Our goal this year is to see **safer, kinder, more active** school zones. To help with this, we will include simple Active Travel ideas for you to try, traffic and parking rule reminders and messages from members of our school communities.

Park & Walk

Walking to school with your child has obvious health benefits for you both and is also a wonderful opportunity to connect. Talk Road Safety with your child along the way. Empower them to ultimately make safe decisions independently around traffic.

- Identify a quiet location where you can park your car and walk to school.
- Think about winding your way through a local park, or past an interesting community feature.
- Grab a coffee and have a chat.

Encourage friends to join you or chat with your school P&C to see if there is community interest in broadening Active Travel ideas.

"Catching the bus home with all my friends is a really cool way to finish the day. I'm just about to start high school and will be catching the bus to the next suburb but I feel ready because I've been catching the bus since Year 4".

Grace, 12

Station

"Walking to the train station in the morning gives me time to think about the day ahead. I like zoning out on the train, listening to music, but we are not allowed to wear headphones on the walk from the station to school".

Jake, 15

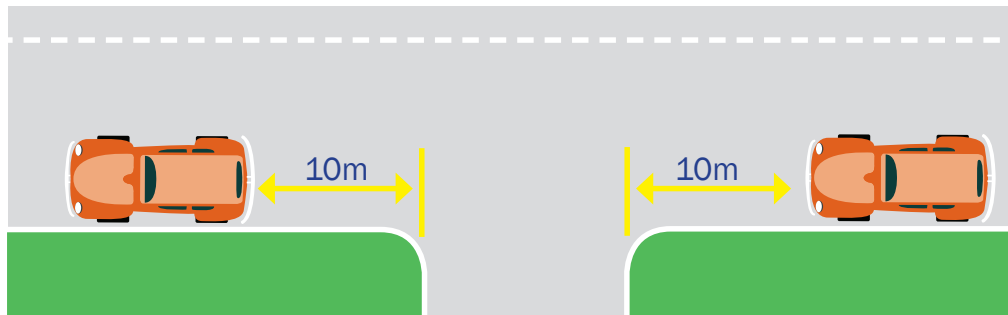
"I love it when Mum picks me up after school and we walk home past the ice-cream shop".

Maya, 8

Parking Rules

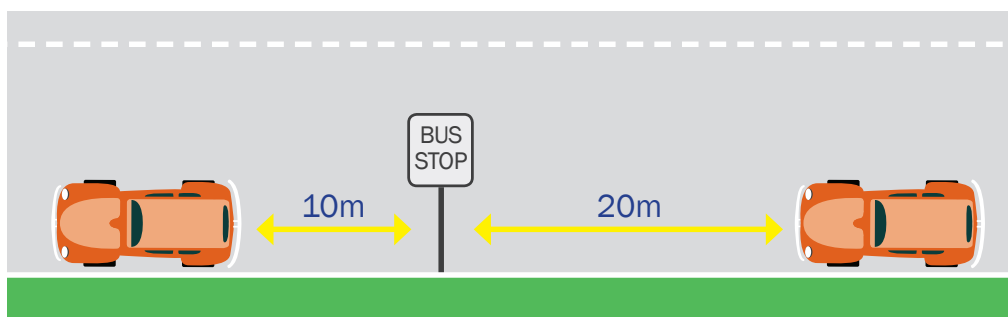
Please park safely and legally on the streets around your school. Park legally so you do not incur parking fines and demerit points. Council Rangers enforce parking around schools. If you park contrary to the road rules you will be fined!

You cannot stop or park your vehicle:



Within 10m of an intersecting road at an intersection without traffic lights (20m with traffic lights), unless a sign states you can park there (see image at left).

PENALTIES FROM: \$464
Demerit Points apply in School Zone

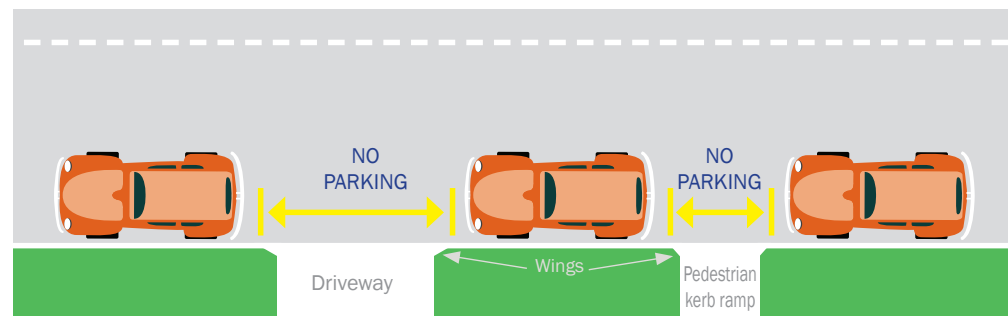


Within 20m before and 10m after a bus stop (see image)

PENALTIES FROM: \$349
Demerit Points apply in School Zone

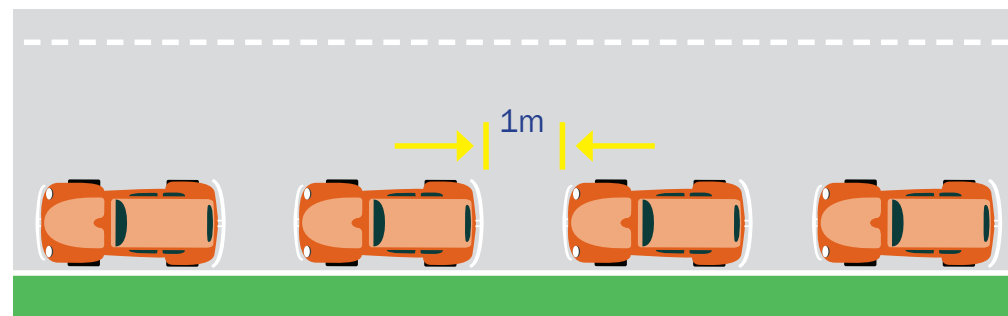
Parallel parking

This is the usual way to park unless signs tell you otherwise. You must park in the same direction as the adjacent traffic and parallel and as close as possible to the kerb.



You can NOT park across driveways or pedestrian kerb ramps. A vehicle can be parked up to the wings on the driveways or ramp (see image)

PENALTIES FROM: \$349
Demerit Points apply in School Zone



You should park at least one metre from any other parked vehicle and entirely within any marked parking lines where provided (see image)

PENALTIES FROM: \$116