

Meeting Date: Tuesday 24 May 2022
Location: Council Chambers, Level 1A, 1 Pope Street, Ryde and Online
Time: 6.00pm

ATTACHMENTS FOR COUNCIL MEETING

Item

5 ADOPTION OF ANZAC PARK MASTERPLAN

Attachment 1 Anzac Park Masterplan Report for Adoption by
Council - May 2022



ANZAC PARK MASTERPLAN REPORT FOR ADOPTION BY COUNCIL

April 2022

 City of Ryde

Lifestyle and opportunity
@ your doorstep

CONTENTS PAGE

1.0 INTRODUCTION

1.1 ANZAC PARK AERIAL..... 2

1.2 BACKGROUND..... 3

2.0 CONTEXT

2.1 RYDE CONTEXT 5

2.2 SITE LOCALITY 6

2.3 SURROUNDING GREEN SPACE..... 7

2.4 SURROUNDING LAND USE 8

2.5 SITE HISTORY..... 9

2.6 DEMOGRAPHICS..... 10

3.0 SITE ANALYSIS

3.1 SITE CHARACTER 12

3.2 EXISTING MOVEMENT 13

3.3 EXISTING FACILITIES 14

3.4 EXISTING ENVIRONMENT 15

3.5 EXISTING HERITAGE AND SIGNIFICANT FEATURES 16

3.6 OPPORTUNITIES & CONSTRAINTS 17

4.0 DESIGN STRATEGY

4.1 VISIONS & PRINCIPLES 19

4.2 DESIGN APPROACH 20

4.3 PROPOSED ARRANGEMENT 21

4.4 PROPOSED MOVEMENT 22

4.5 PROPOSED SPATIAL ARRANGEMENT 23

4.6 PROPOSED PLANTING 24

5.0 MASTERPLAN

5.1 OVERALL PLAN 26

5.2 DETAILED PLAN 01..... 27

5.3 DETAILED PLAN 02 28

5.4 SECTIONS 01 29

5.5 SECTIONS 02 30

5.6 SECTIONS 03 31

5.7 PRECEDENT IMAGES 01 32

5.8 PRECEDENT IMAGES 02 33

5.9 PRECEDENT IMAGES 03 34

5.10 PERSPECTIVE 01 35

5.11 PERSPECTIVE 02 36

5.12 PERSPECTIVE 03 37

5.13 PERSPECTIVE 04 38

5.14 PERSPECTIVE 05 39

5.15 PERSPECTIVE 06 40

5.16 PLANTING PALETTE 41

5.17 CANOPY COVERAGE 42

5.18 CIRCULATION 43

5.19 LIGHTING 44

5.20 STAGING 45

5.21 REFERENCES 46



DOCUMENT CONTROL

REVISION	DATE	STATUS
1	09/12/2021	Initial draft for review
2	01/02/2022	Draft for Stage 2 Community Consultation
3	14/04/2022	Draft for Council Adoption
4	Pending	Final Masterplan Adopted by Council



1.0 INTRODUCTION



Anzac Park is located in West Ryde to the east of West Ryde Train Station and town centre. Anzac Park (the Park) is approximately 150m from West Ryde Station and 50m from the town centre making it within close proximity to infrastructure and services. Anzac Park is bounded on all four sides by streets including Ryedale Lane to the west, Wattle Street to the north, Anzac Avenue to the east and Herbert Street to the south.

Anzac Park measures approximately 1.22 hectares with topography falling gently from the west to east as the lowest point. The Park is predominantly characterised by the diagonal pathway axis that splits the Park into four quadrants. The Park is also characterised by the strong avenues of deciduous trees along the main axis pathways, around the north perimeter as well as the dense tree clusters to the north east corner.

The Park features the children’s playground constructed in 2020 to the north east, ANZAC commemorative plaques and flag poles in the centre and open recreation picnic space to the west, south and east. A small amenities building was constructed in 1986/1987 and is located to the north east underneath the dense tree canopies. The Park is known for hosting a number of community events such as the ANZAC Day Ceremony and West Ryde Garden Bar.

In the interest of the community and growing West Ryde population, City of Ryde Council has developed a Masterplan for Anzac Park that will incorporate passive and active recreation.

The Masterplan aims to provide the framework for how the Park will be upgraded over the next 20 years. This strategic plan aims to meet the current and future recreational needs of the community and user groups, while ensuring sustainable and efficient use and ecological outcomes. This Masterplan incorporates the site’s surrounding context, while maximising the Park’s potential for the broader community.

The goals of this Masterplan are to:

- Improve connectivity to the surrounding West Ryde context and town centre
- Improve existing active and passive recreation uses
- Introduce new and exciting active and passive recreation uses including multi-purpose facilities
- Make Anzac Park a hub for community events and recreation within West Ryde
- Identify improvement projects so the Park best services the future needs of the community
- Demonstrate effective future provision, conservation, planning and development of facilities
- Guide Council over the next 20 years on how the park will be upgraded
- Identify stages for implementation which may be suitable for future external grant funding opportunities

Relating Strategic Council Documents

There are a number of strategic documents that provide context in regard to Anzac Park. These documents include:

Draft West Ryde Town Centre Masterplan (2022)

Council is planning for the future of the West Ryde Town Centre by preparing the West Ryde Town Centre Masterplan (draft) to help encourage the rejuvenation of the area into a distinctive, vibrant, and attractive local centre.

The draft West Ryde Town Centre Masterplan includes the following key points which are applicable to Anzac Park:

- One of the objectives of the West Ryde Town Centre Masterplan is to: improve access to and functionality of existing open spaces to maximise their benefit to the local community, including Anzac Park, Darvall Park and the Sydney Water site.
- New developments should be responsive to the desired village character of Ryedale Road to the west and the existing open space characteristics of Anzac Park.
- Anzac Park is considered to be an important existing open space that is to be protected from overshadowing.
- Future active transport and public transport links in immediate vicinity of Anzac Park.

Draft Green Links Masterplan (2021)

Anzac Park sits within the Meadowbank/ West Ryde Precinct as part of the *Draft Green Links Masterplan*. This precinct provides connection between the Parramatta River and Blaxland Road for pedestrians and cyclists. Within the Meadowbank/ West Ryde Precinct the Green Link Shared User Path is proposed along Wattle Street adjacent Anzac Park, running between Hermitage and Ryedale Roads. This Shared User Path will ultimately provide Anzac Park with increased connectivity across the wider City of Ryde local government area.

Integrated Open Space Plan (2012)

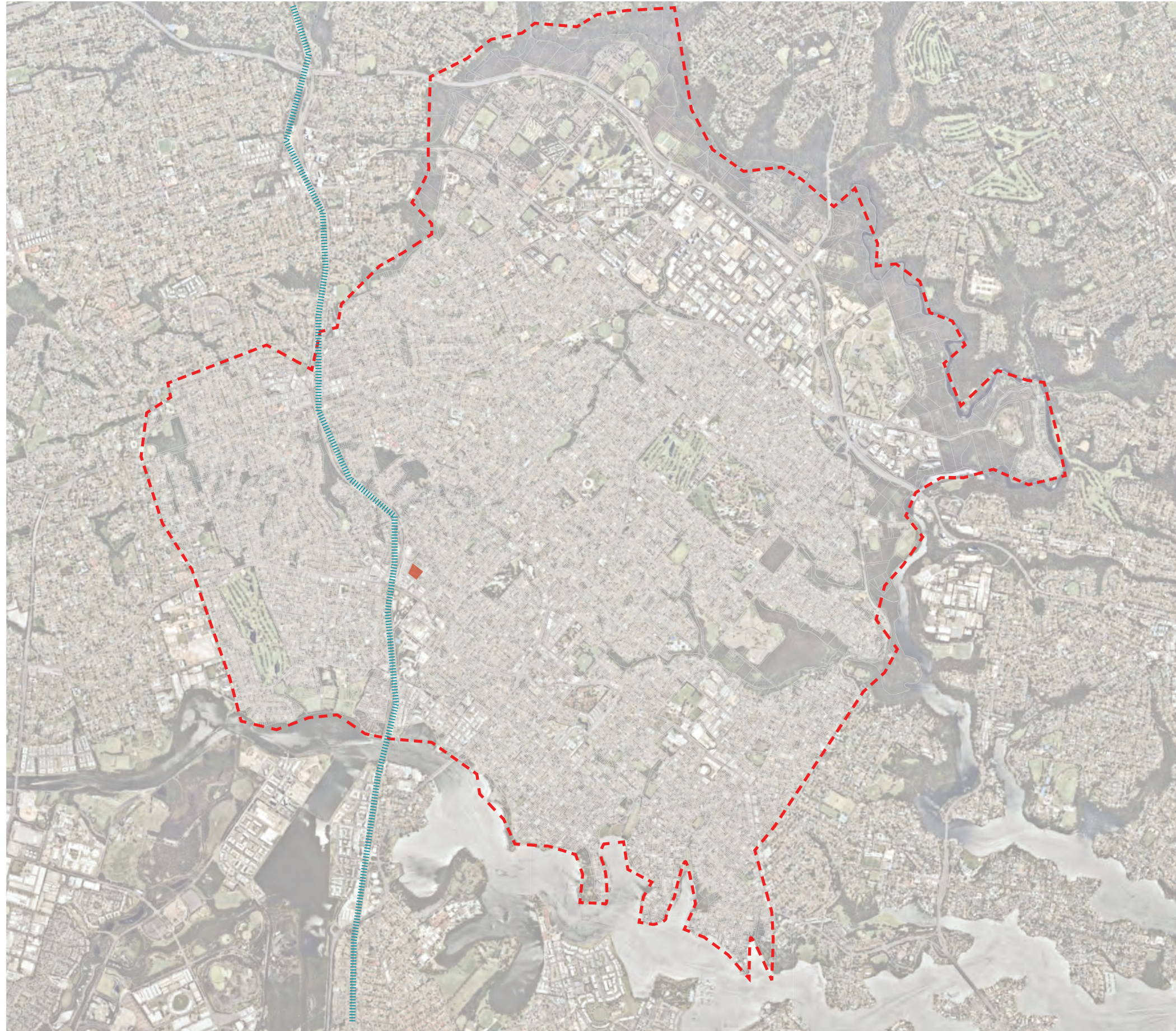
Anzac Park is identified within the *Integrated Open Space Plan* as a Level 3 Open Space within the open space hierarchy between Levels 1 and 4. Level 3 typically represents the 2nd smallest open spaces within City of Ryde, with Level 4 representing the smallest open space areas. Anzac Park as Level 3 attracts a greater level of use, encourage longer stays and contribute to the identity and character of the local area. These spaces also provide convenient access to passive and active recreational opportunities for local residents of all age groups.

Children’s Play Implementation Plan (2019)










2.0 CONTEXT

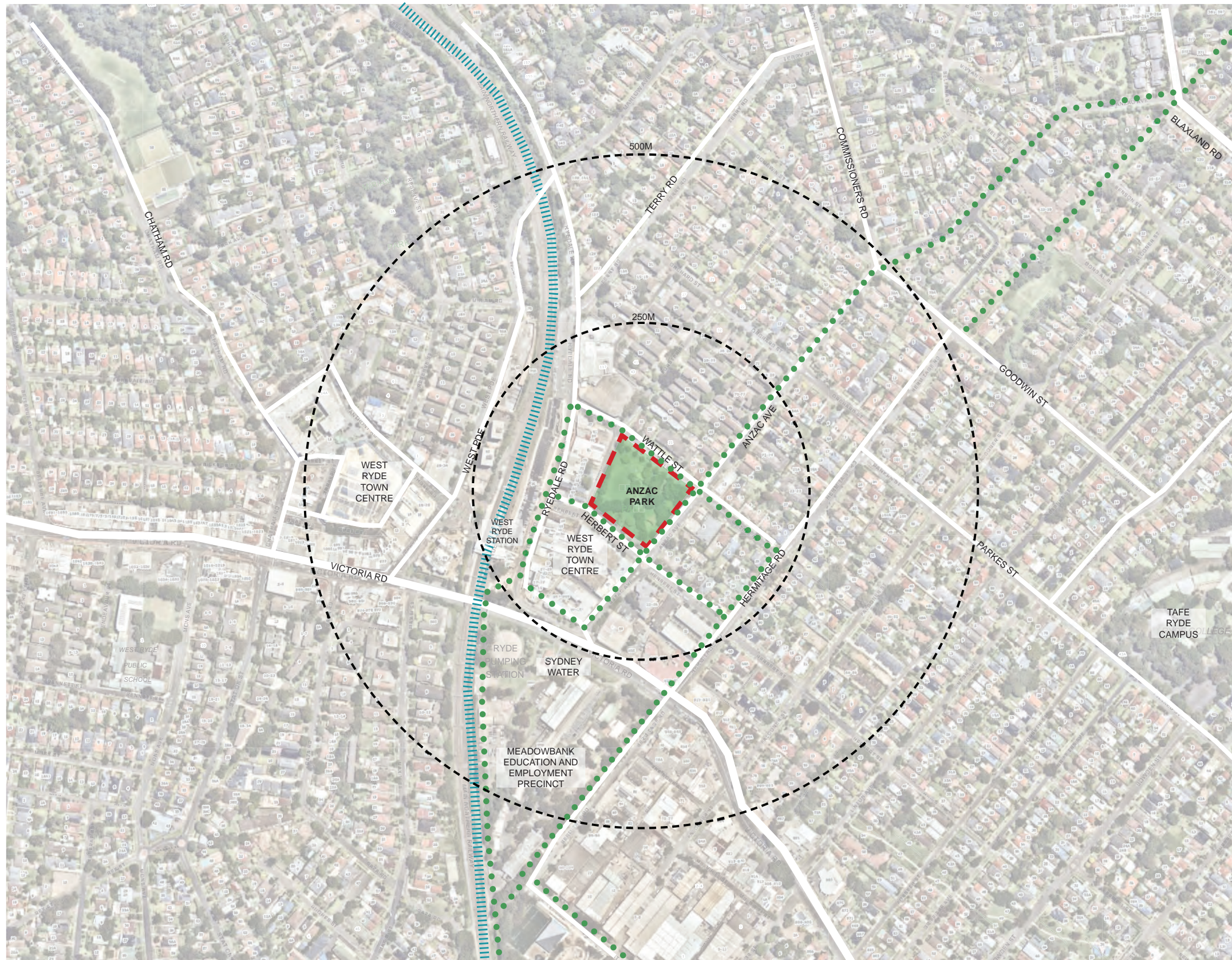


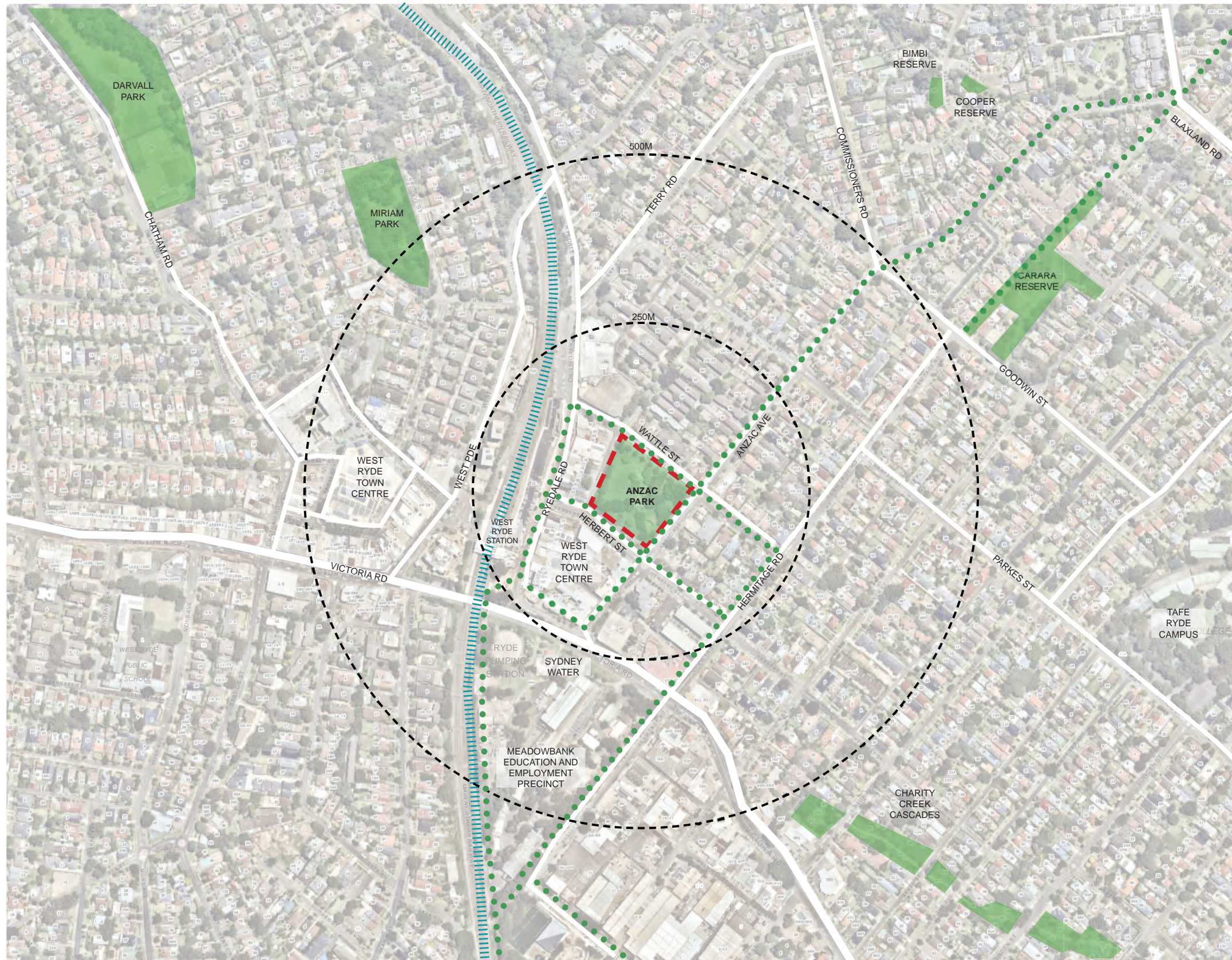
LEGEND



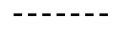



- CITY OF RYDE LOCAL GOVERNMENT AREA (LGA) BOUNDARY
- ANZAC PARK LOCATION
- TRAIN LINE

LEGEND

-  ANZAC PARK BOUNDARY
-  CONTEXT RADIUS
-  MAJOR ROAD CORRIDOR
-  TRAIN LINE
-  FUTURE ACTIVE TRANSPORT ROUTE (REFER GREEN LINKS MASTERPLAN)

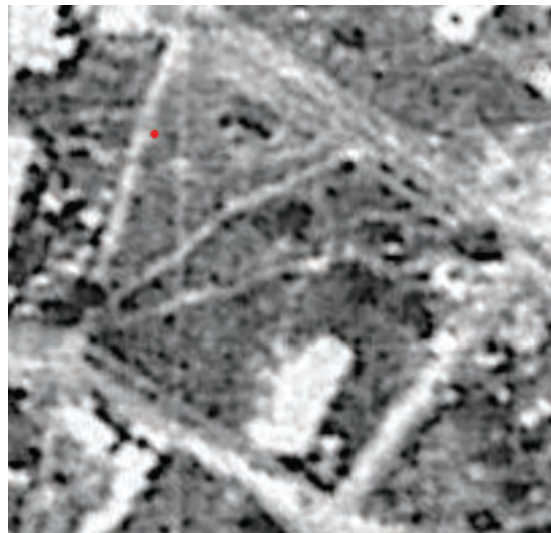




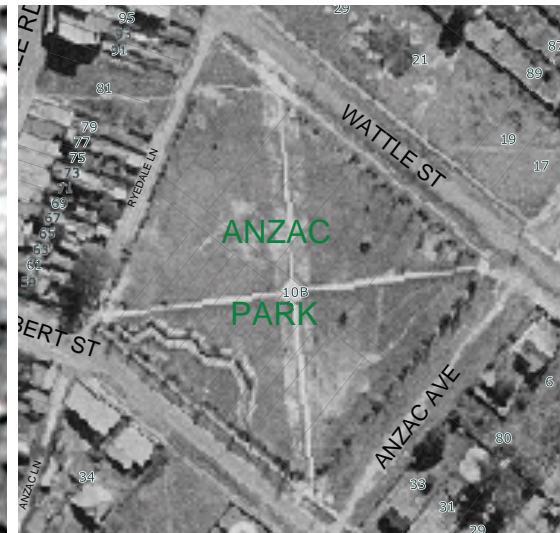
- LEGEND**
-  ANZAC PARK BOUNDARY
 -  SURROUNDING PARKS & RESERVES
 -  CONTEXT RADIUS
 -  MAJOR ROAD CORRIDOR
 -  TRAIN LINE
 -  FUTURE ACTIVE TRANSPORT ROUTE (REFER GREEN LINKS MASTERPLAN)



- LEGEND**
- - - SITE BOUNDARY
 - - - MAJOR PEDESTRIAN MOVEMENT
 - ← FORMAL ENTRY/ EXIT POINTS
 - ● ● ● ● FUTURE ACTIVE TRANSPORT ROUTE (REFER GREENLINKS MASTERPLAN)
 - ||||| TRAIN LINE
 - T TRAIN STATION
 - B BUS STOP
 - P CAR PARKING
 - PUBLIC RECREATION
 - MIXED USE
 - LOW DENSITY RESIDENTIAL
 - HIGH DENSITY RESIDENTIAL
 - INFRASTRUCTURE CORRIDOR



1930 Aerial Photograph¹¹



1943 Aerial Photograph¹¹



1956 Aerial Photograph¹¹



1965 Aerial Photograph¹¹



1978 Aerial Photograph¹¹



1982 Aerial Photograph¹¹



1995 Aerial Photograph¹¹



2006 Aerial Photograph¹¹



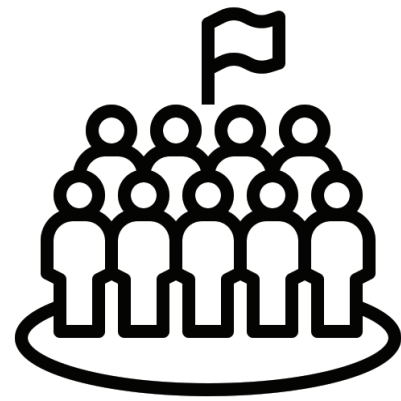
2010 Aerial Photograph¹¹

ANZAC PARK HISTORICAL TIMELINE

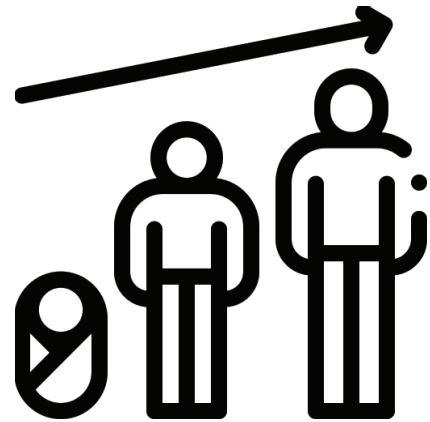
- 1919 - First suggestion that a park was needed in West Ryde by Councillors.¹
- 1926 - Alternative uses for the current site were suggested including bitumen concrete plant.²
- 1935 - The Parks and Lighting Committee inspected the land in Wattle Street, Herbert Street and Anzac Avenue in February.³
- 1936 - The Parks & Lighting Committee recommended that the offer to acquire land be approved.⁸ Council needed to forward £1077 to acquire all land with frontage to Herbert, Wattle and Anzac Streets.⁸
- 1937 – Wattle Street Park becomes Anzac Park. At the meeting of the Parks Committee on 13 March 1937 there were reports presented on a number of parks including the 'Wattle Street Park', later decided 'Anzac Park'.⁹ The committee recommended the following works; fencing, planting of Oleander and Poplar trees, leveling and grassing and pavilion shelter.¹⁰
- 1938-1943 - Works were undertaken including tree planting and the prominent diagonal pathways. During World War II by 1943 zig-zag slit trenches were constructed along Herbert St due to the fear of air raid attacks during.¹¹ A fake Victoria Road alignment was also put through the Park to confuse enemy aerial bombers.
- 1956-1961 - Turf netball courts were constructed in north west portion of Anzac Park.¹¹
- 1965 - Netball Courts were removed.¹¹
- 1971 - Plans for beautification were prepared including new planting and toilet block adjacent the corner of Herbert and Ryedale Lane (no toilet block was completed).¹¹
- 1978 - New plans were prepared including car barriers, shrub and tree planting, adventure playground and junior playground as well as entry pergola at the Wattle Street and Anzac Avenue entry.¹¹
- 1980 - Additional planting, playground, entry pergola and lighting completed.¹¹
- 1986-1987 - Current toilet block constructed.¹¹
- 2003 - Upgrade works were undertaken including additional pathways, BBQs, formalised garden beds with planting, playground relocation to adjacent Anzac Avenue and new park furniture.¹¹
- 2018 - In respect to Centenary of ANZAC Day (2018), commemorative plaques were installed in the central garden bed.¹¹
- 2019-2020 – Council's Heritage Review in 2019 identified Anzac Park as "Heritage Item". The Heritage Review Planning Proposal went through extensive community consultation in September – November 2019 and reported to Council on 12 December 2019. The Ryde Local Environment Plan (2014) was amended on 27 November 2020 to incorporate the new heritage items/areas, including Anzac Park.
- 2021/2022 - Anzac Park Masterplan prepared.

WEST RYDE DEMOGRAPHICS

14,410 RESIDENTS



55.2% 25-59 Yrs old of which:
 22% 25-34
 21.8% 35-49
 11.4% 50-59



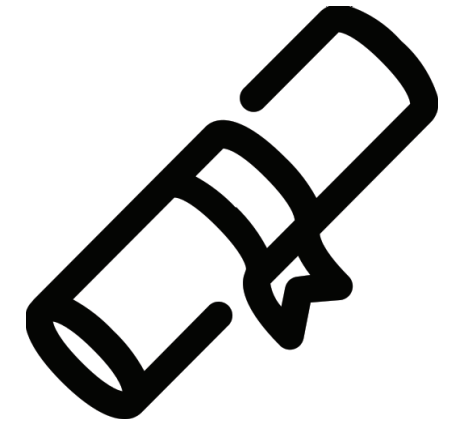
5,400 DWELLINGS



2.6 PEOPLE PER HOUSEHOLD



40.5% HOLD BACHELOR DEGREE
 (HIGHER THAN LGA AVG)



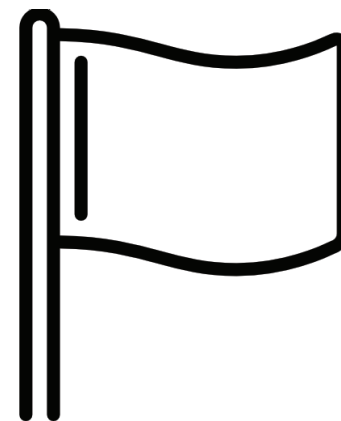
93.7% EMPLOYED



TYPICALLY HOUSEHOLDS EARN
 \$1,482 TO \$2,554 per week



COMMON ANCESTRIES
 CHINESE (23.8%)
 ENGLISH (15.7%)
 AUSTRALIAN (15.0%)



59.4% SPEAK
 LANGUAGE OTHER THAN
 ENGLISH



2.5% POPULATION
 GROWTH PER YEAR
 17,094 RESIDENTS by 2036



(Australian Bureau of Statistics, 2016)¹²



3.0 SITE ANALYSIS

SITE CHARACTER



ANZAC MEMORIAL



DECIDUOUS TREES
FORMAL PLANTING



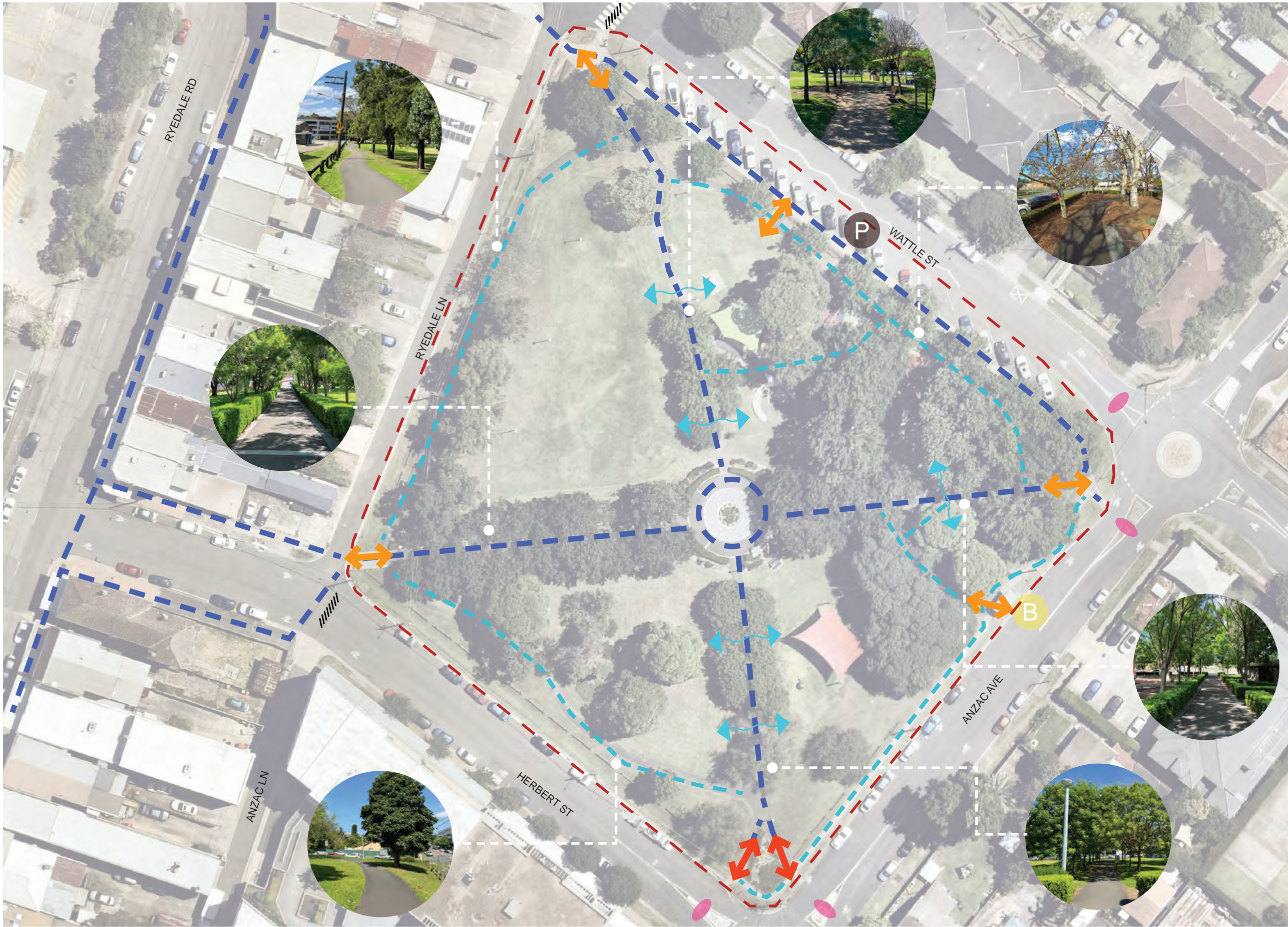
OPEN SPACE



DISTRICT LEVEL PLAY-
GROUND & DENSE TREE
CANOPIES



STRUCTURED
PATHWAYS



- LEGEND**
- - - SITE BOUNDARY
 - - - MAJOR PEDESTRIAN MOVEMENT
 - - - MINOR PEDESTRIAN MOVEMENT
 - ↔ LEVEL (ACCESSIBLE) ENTRY/ EXIT POINTS
 - ↔ ENTRY AT GRADE
 - ↔ MOVEMENT ACROSS PATHWAY
 - ||||| PEDESTRIAN CROSSINGS
 - PEDESTRIAN ISLAND REFUGE
 - B BUS STOP
 - P CAR PARKING



- LEGEND**
- - - SITE BOUNDARY
 - ↔ FORMAL ENTRY/EXIT POINTS
 - STRUCTURED RECREATION
 - OPEN RECREATION
 - AMENITIES
 - ANZAC MEMORIAL



- LEGEND**
- - - SITE BOUNDARY
 - SOLAR MOVEMENT
 - ← WIND MOVEMENT
 - VEGETATION
 - 1:100 FLOODING
 - ~ SLOPING TOPOGRAPHY



LEGEND

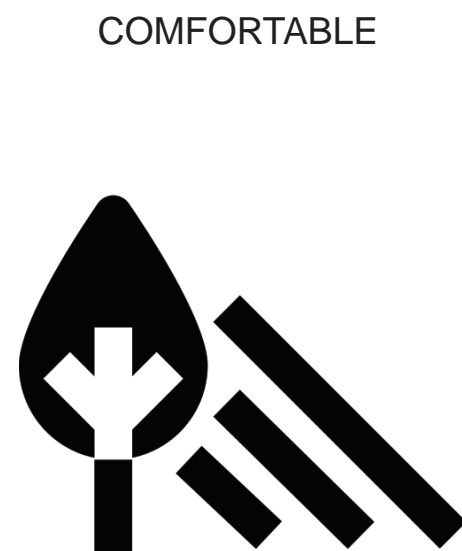
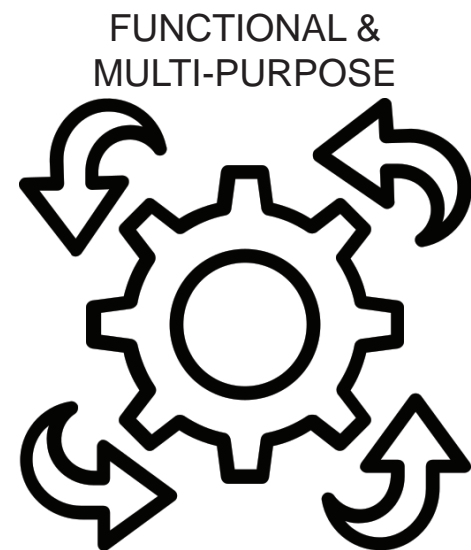
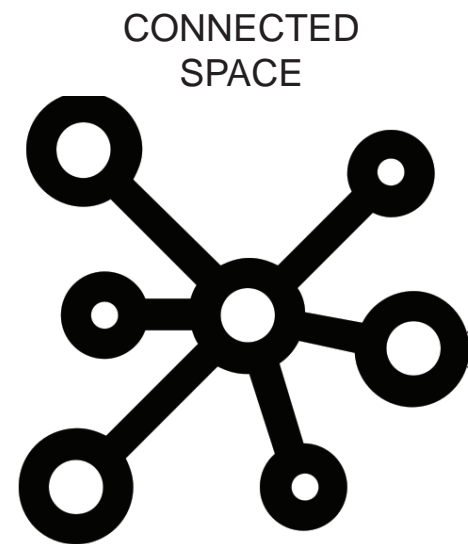
- - - SITE BOUNDARY
- ELEMENTS OF SITE SIGNIFICANCE
- ELEMENTS OF HERITAGE AND CULTURAL SIGNIFICANCE

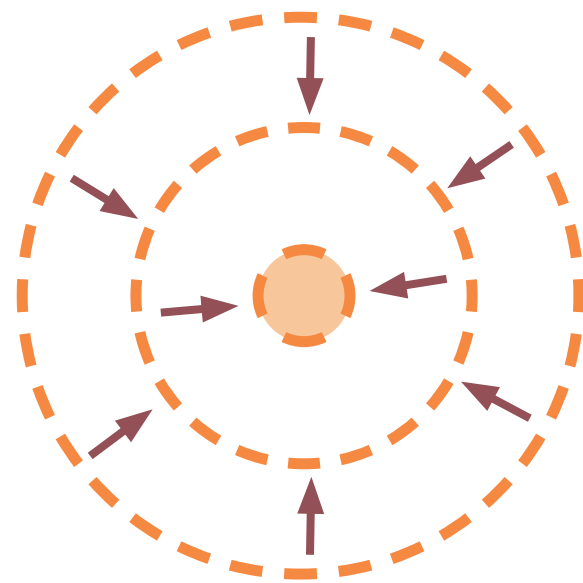


- LEGEND**
- - - SITE BOUNDARY
 - ⇄ INCREASE INTERNAL PARK CONNECTIVITY
 - ⇄ INCREASE EXTERNAL PARK CONNECTIVITY
 - ✱ INCREASE ACTIVATION
 - OPPORTUNITY TO WORK WITH TOPOGRAPHY/ SLOPE
 - ⇄ VIEW VANTAGE POINT
 - ▨ INCREASE PLANTING/ TREE CANOPY
 - ▨ EXTENSION TO PLAYGROUND
 - ▭ FORMALISED COMMUNITY EVENT SPACE
 - ~ POOR VISIBILITY INTO PARK
 - ◊◊◊◊ SHARED ZONE (REAR ACCESS RETAINED)
 - ⋯ FUTURE ACTIVE TRANSPORT ROUTE (REFER GREEN LINKS MASTERPLAN)

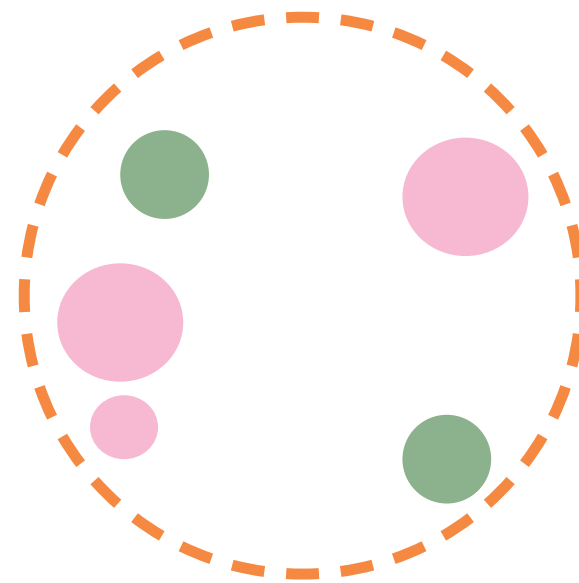


4.0 DESIGN STRATEGY

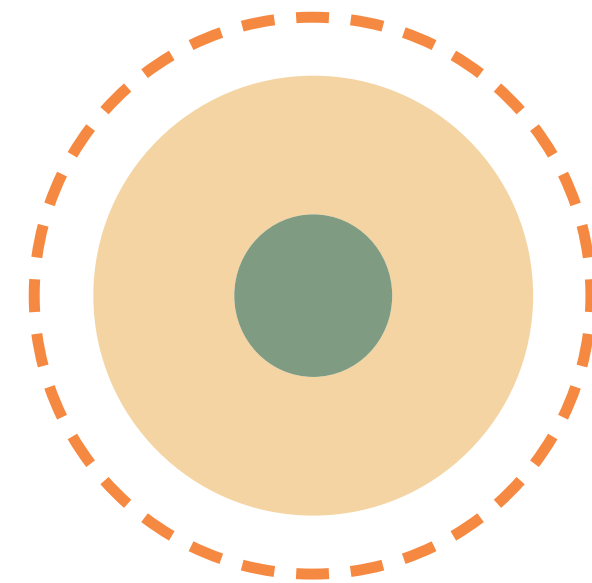




ACTIVATION OF
PARK CORE



DESIGNATED ACTIVE
& PASSIVE RECREATIONAL
ZONES



TOWNCENTRE PARK
AS 'URBAN OASIS'
AND REFUGE





- LEGEND**
- - - SITE BOUNDARY
 - ↔ PARK ENTRY EXIT
 - - - MAJOR PEDESTRIAN MOVEMENT
 - - - MINOR PEDESTRIAN MOVEMENT
 - ↔ MOVEMENT ACROSS PATHWAY
 - //// PEDESTRIAN CROSSING
 - PEDESTRIAN REFUGE ISLAND
 - B BUS STOP
 - P CAR PARKING



- LEGEND**
- SITE BOUNDARY
 - ↔ PARK ENTRY EXIT
 - MAJOR PEDESTRIAN MOVEMENT (OUTSIDE PARK)
 - MAJOR PEDESTRIAN MOVEMENT (WITHIN PARK)
 - MINOR PEDESTRIAN MOVEMENT
 - ||||| PEDESTRIAN CROSSING
 - PEDESTRIAN REFUGE ISLAND
 - B BUS STOP
 - P CAR PARKING



LEGEND

- - - SITE BOUNDARY
- - - Existing *Platanus acerifolia*
- - - Existing *Fraxinus raywoodii*
- - - Existing *Celtis australis*
- - - Existing *Lophostemon confertus*
- - - Existing *Jacaranda mimosifolia*
- Proposed *Fraxinus raywoodii*
- Proposed *Platanus acerifolia*
- ◀ Proposed WSUD Swale

NOTE:

Preliminary tree assessment was conducted in the preparation of this Masterplan.

Some existing trees, especially along the axis paths, are likely to reach senescence and exceed their maximum natural lifespan within coming 20 years.

A succession plan for progressive replacement plantings is to be developed based on formal assessment of tree conditions:

- * High priority for replacement (1-5 years)
- * Medium priority for replacement (6-10 years)
- * Low priority for replacement (11-20 year)
- * Ongoing - Replacement not required.

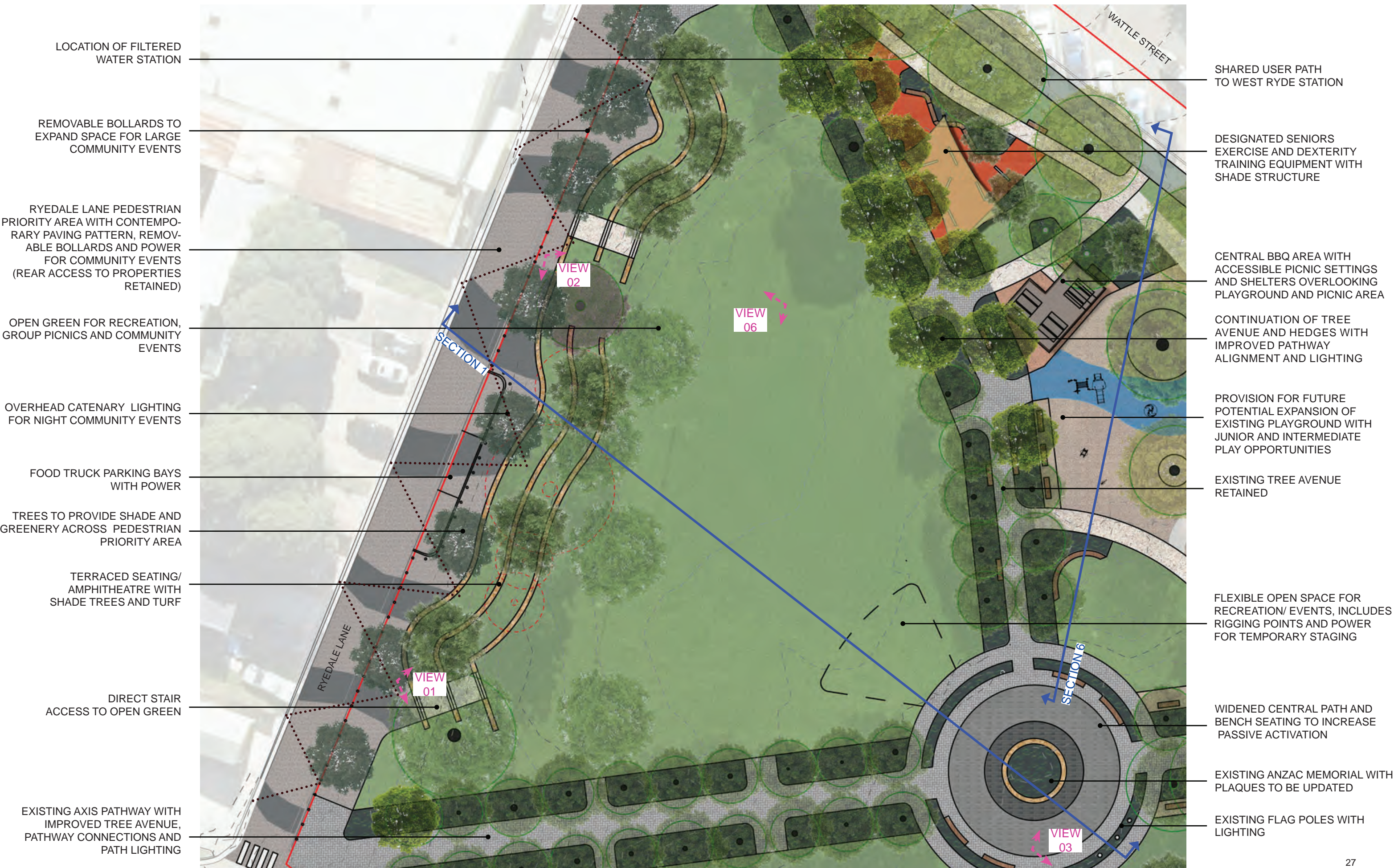


5.0 MASTERPLAN



LEGEND

1. Existing ANZAC memorial with plaques to be updated
2. Widened circular path with bench seating and memorial planting
3. Flexible open space for recreation/ events, including rigging and power for temporary event staging
4. Flag Poles with lighting
5. Terraced seating amphitheatre with shade trees and turf
6. Open green for recreation, group picnics and community events
7. Ryedale Lane pedestrian priority area with contemporary paving pattern, removable bollards and power for community events (rear access to properties retained)
8. Ryedale Lane pedestrian priority area with food truck parking bays and power
9. Seniors exercise and dexterity equipment with shade structure
10. BBQ and picnic shelters with accessible picnic settings
11. Provision for future potential expansion of playground with junior and intermediate play opportunities
12. Existing playground
13. New amenities building with accessible facilities and bike racks adjacent
14. Active recreation area including table tennis tables with existing shade structure
15. Fitness equipment zone
16. Picnic and reflection area for smaller groups
17. Fixed seating, tables for reflection and quiet study, with historic interpretation for past WWII trenches and air raid shelter
18. Continuation of tree avenue with improved pathway alignment, hedges and lighting
19. Existing tree avenue and hedges with improved pathway connections and path lighting
20. Shared User Path
21. On-Street parking with accessible parking spaces
22. New avenue tree planting within park boundary



LOCATION OF FILTERED WATER STATION

REMOVABLE BOLLARDS TO EXPAND SPACE FOR LARGE COMMUNITY EVENTS

RYEDALE LANE PEDESTRIAN PRIORITY AREA WITH CONTEMPORARY PAVING PATTERN, REMOVABLE BOLLARDS AND POWER FOR COMMUNITY EVENTS (REAR ACCESS TO PROPERTIES RETAINED)

OPEN GREEN FOR RECREATION, GROUP PICNICS AND COMMUNITY EVENTS

OVERHEAD CATENARY LIGHTING FOR NIGHT COMMUNITY EVENTS

FOOD TRUCK PARKING BAYS WITH POWER

TREES TO PROVIDE SHADE AND GREENERY ACROSS PEDESTRIAN PRIORITY AREA

TERRACED SEATING/ AMPHITHEATRE WITH SHADE TREES AND TURF

DIRECT STAIR ACCESS TO OPEN GREEN

EXISTING AXIS PATHWAY WITH IMPROVED TREE AVENUE, PATHWAY CONNECTIONS AND PATH LIGHTING

SHARED USER PATH TO WEST RYDE STATION

DESIGNATED SENIORS EXERCISE AND DEXTERITY TRAINING EQUIPMENT WITH SHADE STRUCTURE

CENTRAL BBQ AREA WITH ACCESSIBLE PICNIC SETTINGS AND SHELTERS OVERLOOKING PLAYGROUND AND PICNIC AREA

CONTINUATION OF TREE AVENUE AND HEDGES WITH IMPROVED PATHWAY ALIGNMENT AND LIGHTING

PROVISION FOR FUTURE POTENTIAL EXPANSION OF EXISTING PLAYGROUND WITH JUNIOR AND INTERMEDIATE PLAY OPPORTUNITIES

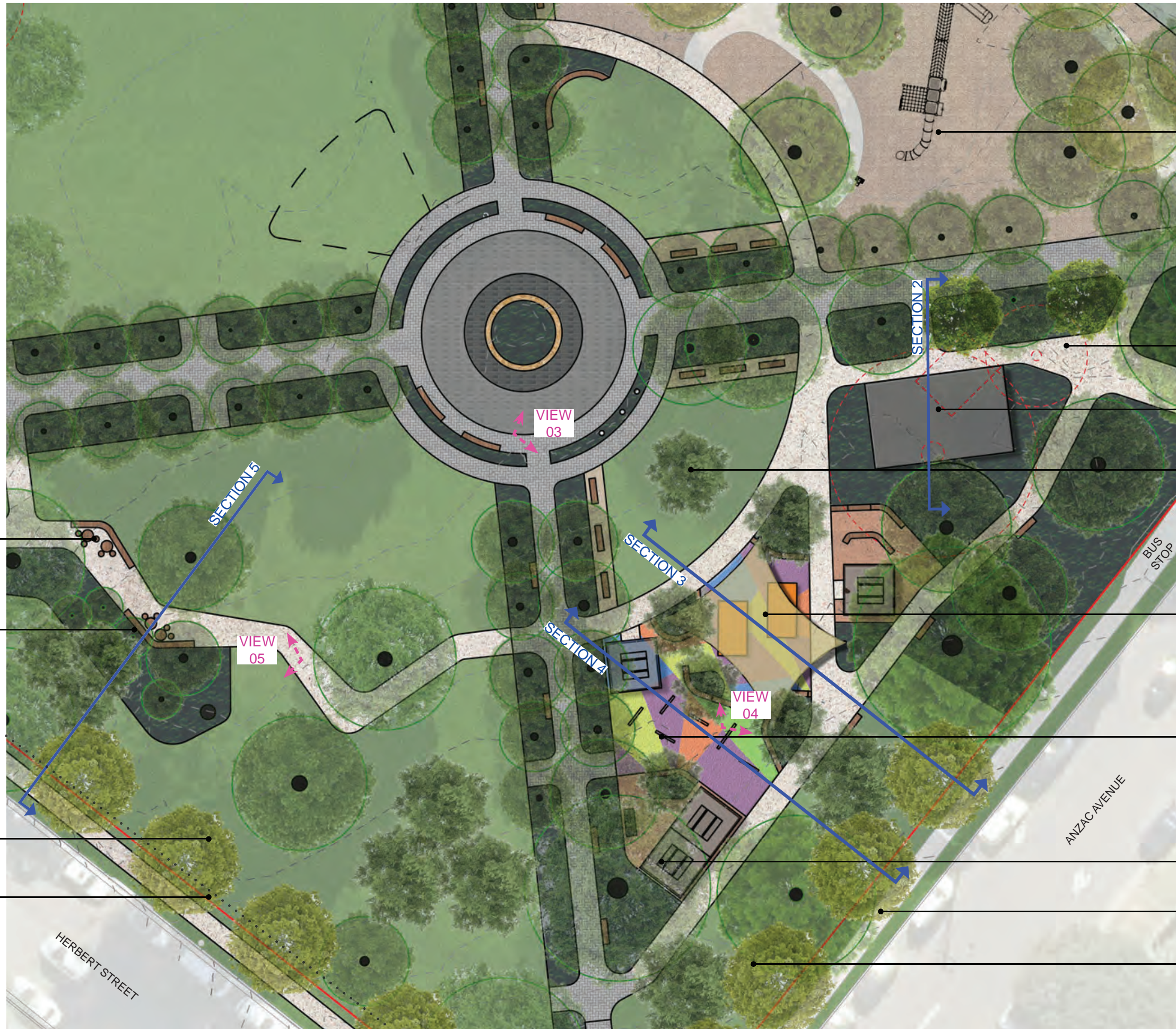
EXISTING TREE AVENUE RETAINED

FLEXIBLE OPEN SPACE FOR RECREATION/ EVENTS, INCLUDES RIGGING POINTS AND POWER FOR TEMPORARY STAGING

WIDENED CENTRAL PATH AND BENCH SEATING TO INCREASE PASSIVE ACTIVATION

EXISTING ANZAC MEMORIAL WITH PLAQUES TO BE UPDATED

EXISTING FLAG POLES WITH LIGHTING



EXISTING PLAYGROUND

LOCATION OF NEW BIKE RACKS

NEW AMENITIES BUILDING WITH ACCESSIBLE FACILITIES

LONE PINE MEMORIAL PLANTING

ACTIVE RECREATION AREA INCLUDING TABLE TENNIS TABLES WITH EXISTING SHADE STRUCTURE

DESIGNATED FITNESS ZONE WITH FIXED EQUIPMENT CIRCUIT

SHELTER WITH ACCESSIBLE PICNIC TABLES

EXISTING ANZAC AVENUE FOOTPATH

NEW AVENUE TREE PLANTING WITHIN PARK BOUNDARY

FIXED TABLES AND SEATING FOR QUIET REFLECTION AND STUDY

HISTORIC INTERPRETATION FOR PAST WWII TRENCHES AND AIR RAID SHELTER

NEW AVENUE TREE PLANTING WITHIN PARK BOUNDARY

BOLLARDS AS DELINEATION ALONG HERBERT ST BOUNDARY

HERBERT STREET

ANZAC AVENUE

BUS STOP

VIEW 03

VIEW 04

VIEW 05

SECTION 2

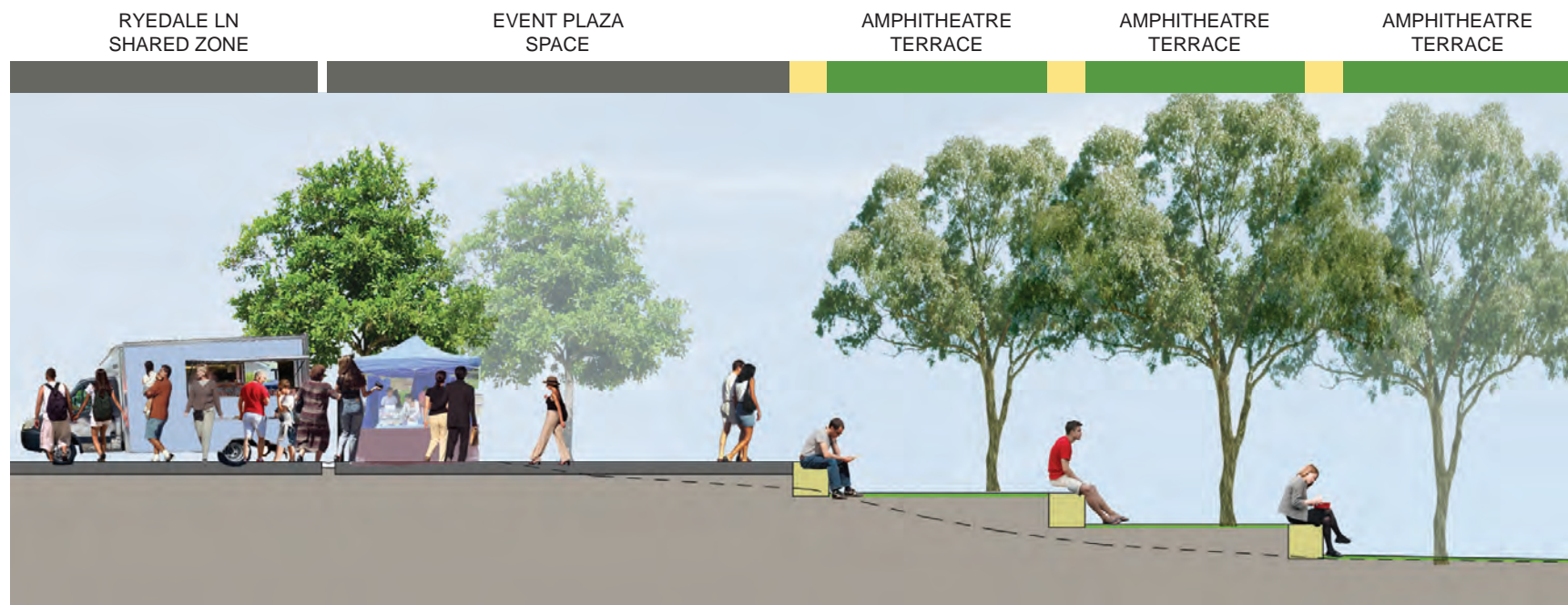
SECTION 3

SECTION 4

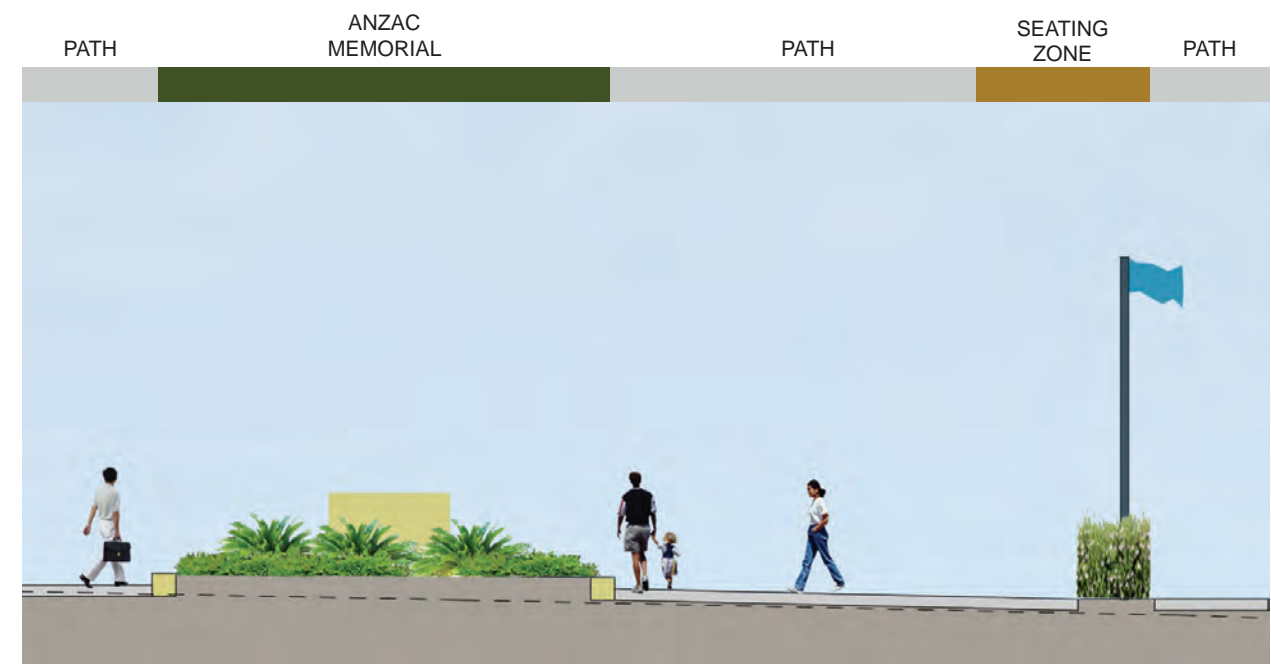
SECTION 5



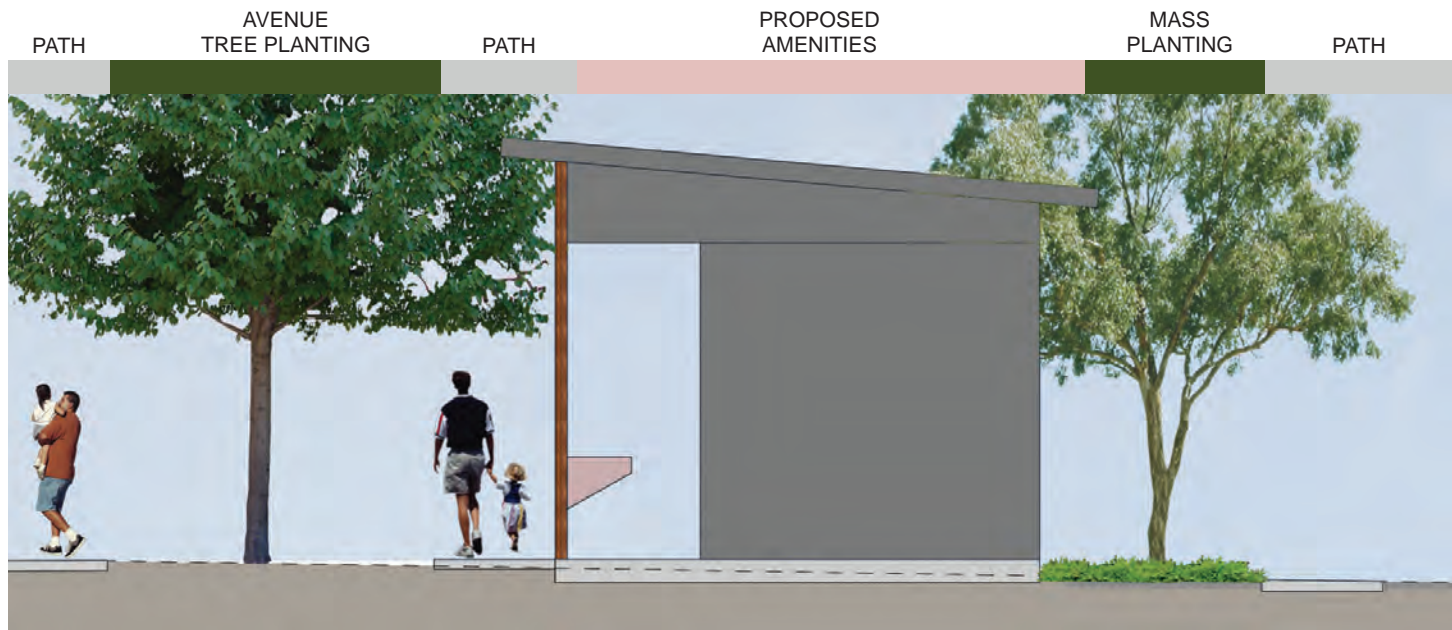
SECTION 01
SCALE 1:200 @A3



SECTION 01-A
SCALE 1:100 @A3



SECTION 01-B
SCALE 1:100 @A3



SECTION 02
SCALE 1:100 @A3



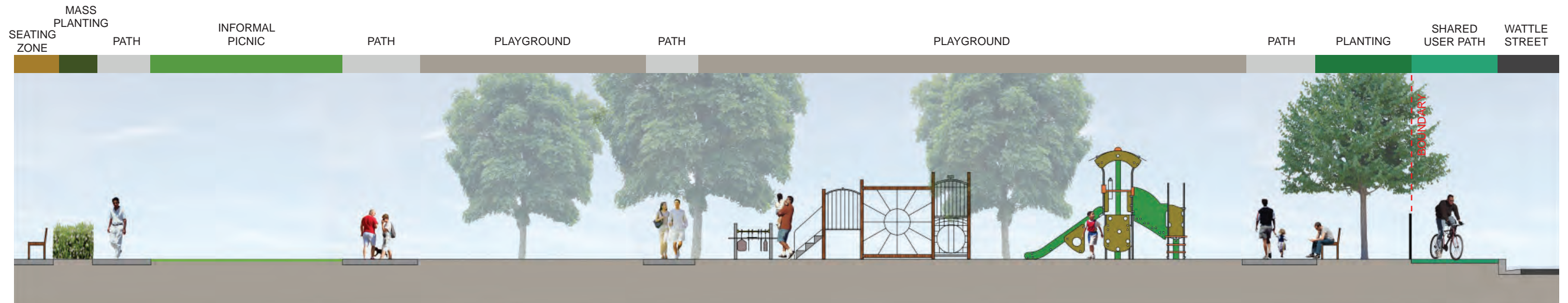
SECTION 03
SCALE 1:100 @A3



SECTION 04
SCALE 1:100 @A3



SECTION 05
SCALE 1:100 @A3



SECTION 06
SCALE 1:100 @A3

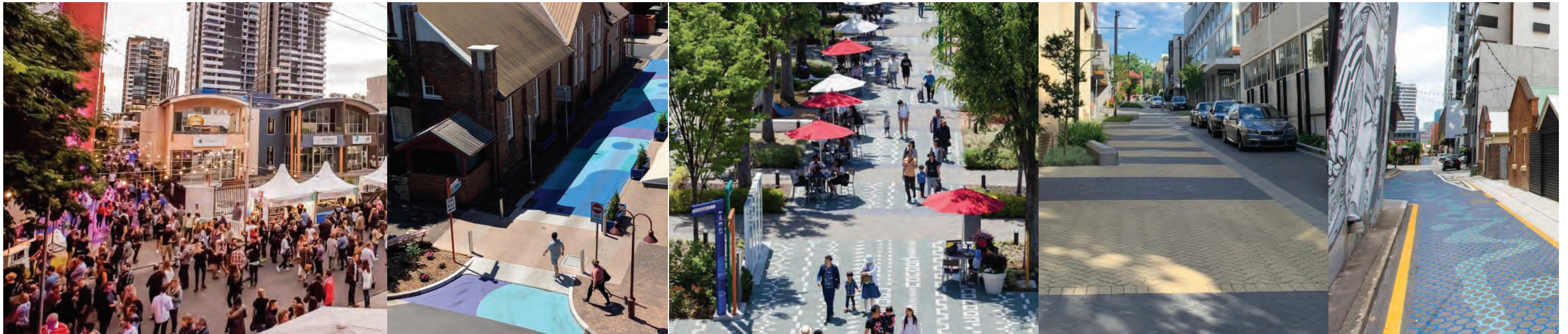
PICNIC AND EVENT SPACE



AMPHITHEATRE & TEMPORARY STAGE



SHARED ZONE & PLAZA SPACE



AMENITIES BUILDING



GAMES AND FITNESS AREA



SENIORS EXERCISE EQUIPMENT



REFLECTION & STUDY SPACE



GENERAL PARK FURNITURE



(INDICATIVE SELECTIONS)













TREES



Fraxinus raywoodii
(Claret Ash)



Lophostemon confertus
(Brush Box)



Brachychiton populneus
(Qld Bottle Tree)



Platanus acerifolius
(London Plane Tree)



Eucalyptus fibrosa
(Red Ironbark)



Eucalyptus haemastoma
(Scribbly Gum)



Eucalyptus tereticornis
(Forest Red Gum)



Pistacia chinensis
(Chinese Pistache)



Pinus brutia
(Lone Pine Tree)

SHRUBS



Buxus microphylla japonica
(Japanese Box)



Rosmarinus officinalis
(Rosemary)



Nandina domestica
'Gulf Stream'
(Nandina)



Callistemon viminalis 'Better John'
(Dwarf Callistemon)

GRASSES & GROUNDCOVERS



Liriope muscari 'Just Right'
(Giant Liriope)



Trachelospermum jasminoides
(Stair Jasmine)



Myoporum parvifolium
(Creeping Boobialla)

WSUD STORMWATER
DETENTION



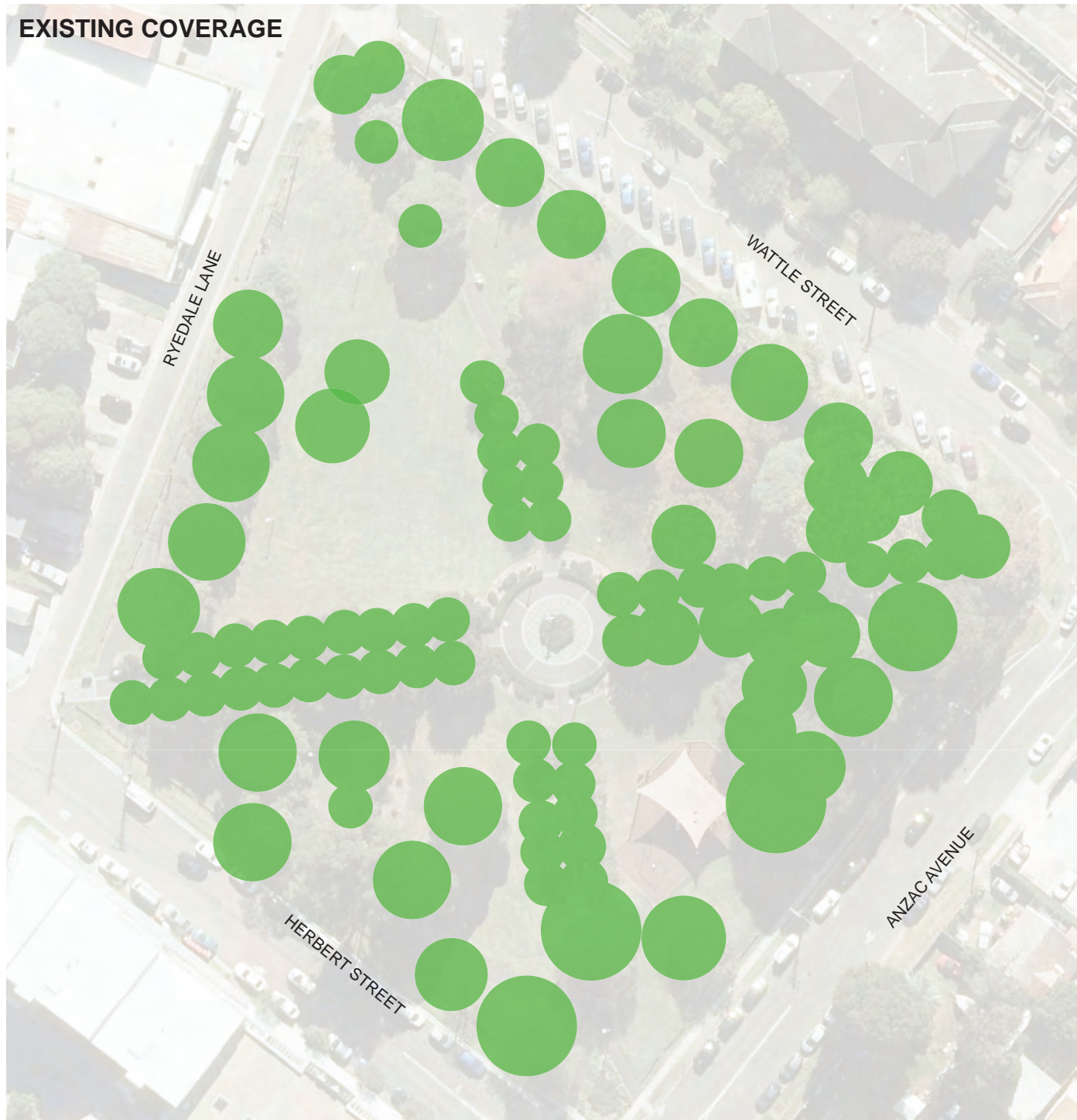
Ficinia nodosa
(Knobby Club Rush)



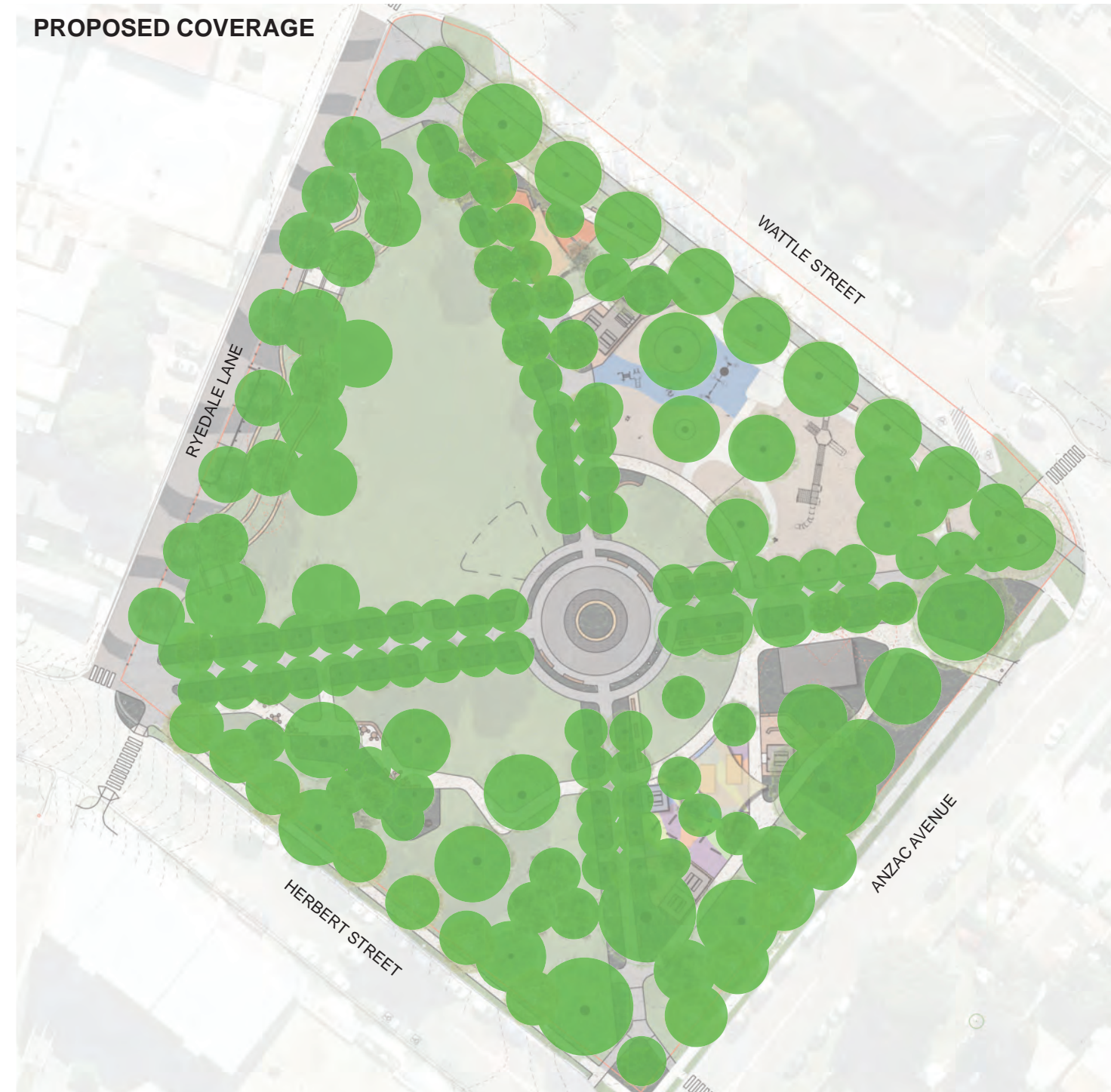
Imperata cylindrica
(Cogon Grass)



Carex appressa
(Club Rush)



EXISTING COVERAGE



PROPOSED COVERAGE











PLANTING PRINCIPLES

- Continue and enhance avenue tree planting on axis pathways
- Avenue tree planting to Herbert Street and Anzac Avenue frontages
- Native evergreen tree planting within passive and active zones for shade and greenery
- Deciduous trees along axis pathways and frontages to provide character and solar access

APPROXIMATE CANOPY CALCULATIONS

- Existing 37% of overall site
- Proposed 59% of overall site area



- LEGEND**
-  PARK ENTRY EXIT
 -  MAJOR PEDESTRIAN MOVEMENT
 -  MINOR PEDESTRIAN MOVEMENT
 -  FUTURE ACTIVE TRANSPORT ROUTE (REFER GREENLINKS MASTERPLAN)
 -  PEDESTRIAN CROSSING
 -  PEDESTRIAN REFUGE
 -  BUS STOP
 -  CAR PARKING
 -  ACCESSIBLE PARKING
 -  CAR SHARE PARKING



LEGEND

- MAJOR PATHWAY POST TOP LIGHTING
 - MINOR PATHWAY POST TOP LIGHTING
 - AMPHITHEATRE POST LIGHTING
 - FLAG POLE UP LIGHTING
 - ⋯ CATENARY OVER-HEAD LIGHTING
 - - - STRIP LIGHTING IN AMPHITHEATRE WALLS
 - SHELTER AND AMENITIES LIGHTING
 - 'FAIRY' LIGHTING UP TREE TRUNKS
- (LOCATIONS SHOWN ARE CONCEPTUAL ONLY)

NOTE:

Existing CCTV on-site to be upgraded to digital platform. Locations for cameras, poles and camera angles to be reviewed to ensure appropriate coverage and sight lines are achieved for the current park layout and future park configurations as the Masterplan is progressively implemented.



STAGING

Stage 1

- Demolition of existing amenities building
- New amenities building
- Shelters & BBQ
- Bike Racks
- Circulation pathways and lighting
- Fitness circuit
- Table tennis tables
- Furniture and fixtures
- Tree planting
- Undergrounding of Anzac Street powerlines

Stage 2

- Main circulation pathways and lighting
- Widened central pathway
- Recreation/ temporary stage area
- Tree planting
- Upgrade flag poles
- ANZAC Memorial and plaques to upgraded

Stage 3

- Ryedale Lane shared zone and lighting
- Plaza space
- Amphitheatre
- Tree planting
- Circulation pathways
- Undergrounding of Ryedale Lane powerlines

Stage 4

- Playground extension
- BBQ and Picnic Shelters
- Pathways and lighting
- Senior exercise and dexterity equipment
- Shade structure above exercise equipment

Stage 5

- Passive recreational zone
- Seating and study zone
- Historical interpretation zone
- Circulation pathways and lighting
- Tree planting
- Undergrounding of Herbert Street powerlines
- Park delineation bollards/ fence

Stage 6

- Green Links Shared User Path (Green Links Masterplan)
- Undergrounding of Wattle Street powerlines

Other/Ongoing

- CCTV review and upgrade
- Tree assessments and succession plan for progressive replacement plantings (if/as required)
- Pedestrian crossings in adjoining local streets.

References

- ¹Minutes of Ordinary meeting 5 December 1919
- ²M C I Levy, Wallumetta: a history of Ryde and its districts. 1792 to 1945, p.246
- ³Parks & Lighting Committee Report 2 February 1935
- ⁴Parks & Lighting Committee Report 30 March 1935
- ⁵Parks & Lighting Committee Report 1 June 1935
- ⁶Parks & Lighting Committee Report 1 June 1935
- ⁷Parks & Lighting Committee Report 6 November 1935
- ⁸Parks & Lighting Committee Report 16 May 1936
- ⁹Parks Committee Report 13 March 1937
- ¹⁰Parks Committee Report 13 March 1937
- ¹¹Anzac Park West Ryde Background and History, A. Phippen, 2021

