

New concept image released for New Heart of Ryde community facility

Published on 31 July 2019



Concept image of community centre

The City of Ryde has released a new indicative image detailing how the interior of the New Heart of Ryde community facility could look.

The City of Ryde community has expressed a need to enhance cultural and community facilities to meet the increasing demand and ensure equitable access for all sections of our community.

Therefore, the proposal features a flexibly-designed, multi-purpose cultural and community space, as well as a space with offices, childcare facilities, commercial and retail facilities, an outdoor plaza, on-site basement parking, public meeting rooms and Council chambers.

The New Heart of Ryde will be a low impact development featuring two buildings that will address the growing demand within Ryde for a new and significant space that will service a diverse range of community needs.

Formal consultation on The New Heart of Ryde proposal will take place until 25 August, with all members of the community encouraged to [have their say](#).

'The New Heart of Ryde' good for business

Published on 24 July 2019



Riverside Business Chamber President, Tony Abboud & City of Ryde Mayor, Clr Jerome Laxale

The Riverside Business Chamber has become the latest organisation to voice its support for The New Heart of Ryde.

The New Heart of Ryde is the new vision for the Ryde Civic Centre, delivering a four-fold increase in community facilities without the introduction of any residential development on the site.

Riverside Business Chamber President, Tony Abboud, said the proposal meets the needs of the entire City of Ryde community.

“In my 39 years of being involved in the local business community, The New Heart of Ryde is the best proposal I have seen for the Ryde Civic Centre site,” Mr Abboud said.

“In terms of the needs of the business community, it ticks all the boxes. Businesses will be able to hold conferences and stage large-scale events such as the Local Business Awards. At present the Local Business Awards sells out with some nominees unable to attend the event simply because we do not have a large enough venue in the City.

“There is also the opportunity for The New Heart of Ryde to be a one-stop shop for the community, with dedicated Council offices and space for other government services that will have synergies with the retail businesses at Top Ryde. It really will be a true civic hub.”

City of Ryde Mayor, Clr Jerome Laxale, said the initial reception to The New Heart of Ryde has been overwhelmingly positive.

“The New Heart of Ryde is one of the most exciting projects undertaken by the City of Ryde. It will be built for the community and owned by the community, without any residential development,” Clr Laxale said.

“It has won the support of local residents, community groups such as the Ryde Eisteddfod and now the local business community.

“Given the importance of this project, it is essential that all members of the community take part in the formal consultation that is currently underway. All feedback submitted during this period will help shape the final design and report that will be submitted to Council later in the year.”

Members of the public have until Sunday 25 August to provide feedback. Submissions can be made:

- Through an online survey at www.ryde.nsw.gov.au/heart
- By email at cityofryde@ryde.nsw.gov.au
- By post to General Manager, City of Ryde, Locked Bag 2069, North Ryde NSW 1670.

In addition to receiving submissions, the City of Ryde will also undertake a wide range of communication activities during the formal consultation period including a community roadshow and displays at local shopping centres.

The New Heart of Ryde will be financially sustainable that will not result in increased rates or cuts to any services. Council will also retain complete ownership of the site.

Council endorses reforms to protect Ryde's heritage

Published on 23 July 2019



'Ripley', a beautiful example of a Federation Arts & Crafts style home in Eastwood

The City of Ryde has endorsed a raft of reforms that will offer stronger protections for places of heritage significance while also providing more funding to homeowners to help conserve and add value to their heritage-listed properties.

The reforms will amend the Ryde Local Environment Plan to create six new heritage conservation areas and 44 new heritage items across the City of Ryde.

The former Squire's Brewery and Halvorsen's Boat Yard in Putney and the Glades Bay Baths in Gladesville will also be listed as archaeological sites.

In addition, Council has allocated an additional \$500,000 to its Local Heritage Assistance Fund and will increase the size of individual grants available from the fund from \$5,000 to \$15,000. The Local Heritage Assistance Fund was established by the City of Ryde to help with the cost associated with repairing and conserving privately-owned heritage-listed items.

The reforms are based on the findings of a comprehensive heritage review commissioned by the City of Ryde to protect the community's heritage and provide greater certainty to current and prospective home owners. City of Ryde Mayor, Cllr Jerome Laxale, said the reforms will ensure places of heritage significance will be adequately protected.

“Ryde has been a target of overdevelopment for years and our community is concerned about losing our City’s history. These measures show how serious this Council is about protecting our local heritage,” Clr Laxale said.

“These changes will ensure our heritage items will have statutory protection, while also providing much-needed certainty in the development process.

“We will also provide financial support to owners to protect and enhance their heritage properties, with a \$500,000 increase to the Heritage Assistance Fund.

Ryde’s last heritage study undertaken in 2010 left the majority of properties identified unprotected. About 20 percent of these properties have been demolished or significantly altered, thereby losing their heritage significance.

“If we do not act urgently, more and more properties worthy of protection will be lost forever.”

The reforms will now be submitted to the Department of Planning for Gateway Determination prior to the City of Ryde undertaking extensive community consultation on the proposed changes.

Ryde's Historic Homes: Then and Now

Interested in seeing more heritage homes? Check out our [Ryde's Historic Homes: Then and Now page](#) and use the sliders to see how the homes and their surroundings have changed over time.

New Problem Waste Drop-off Station in Ryde

Published on 22 July 2019



New problem waste drop-off station

[Ryde Aquatic Leisure Centre \(RALC\)](#) is now home to a brand new Problem Waste Drop-Off Station!

Problem Waste Drop-off Stations are for City of Ryde residents to safely dispose of household hazardous waste items that are not allowed in your kerbside red, yellow or green lid bins. These items can include:

- household batteries
- mobile phones and accessories
- ink cartridges
- light bulbs and globes*.

There are seven Problem Waste Drop-Off Stations around the City of Ryde, including at our Operations Centre, Customer Service Centre, West Ryde Library, Tzu Chi Australia, Eden Gardens and Macquarie University, in addition to the one at the RALC.

To find out what you can dispose of and the locations of the stations, visit our [Problem Waste Drop-Off Stations webpage](#).

**Please note, light bulbs and globes are not accepted at the RALC Drop-Off Station only. Other items on the list are accepted.*

Lighting upgrades for sporting venues

Published on 17 July 2019

Two key sporting fields in the City of Ryde have received extensive lighting upgrades as part of Council's ongoing work to create state-of-the-art sporting venues across the community.

Marsfield Park and Gladesville's Monash Park both received the upgrades which were funded under Council's four year delivery plan. Both projects received two separate \$20,000 grants from Football NSW as part of its Let's Light Up Football initiative.

Clr Roy Maggio put forward a motion last year for the City of Ryde to seek the grants from Football NSW, which received unanimous support from Councillors.

Marsfield Park and Monash Park are regularly utilised by local sporting organisations and have become popular facilities for their respective communities.

Marsfield Park is the home ground for the Macquarie Dragons Football Club as well as the Central Eastwood Rugby Club, while Monash Park is used by the Gladesville Ravens Football Club.

City of Ryde Mayor, Clr Jerome Laxale, said the upgrades reaffirm Council's commitment to deliver first-rate facilities for local sporting clubs and their members.

"These upgrades are a really effective way of providing more use of our open spaces for residents and sporting clubs," Clr Laxale said.

"The Let's Light Up Football initiative has been really beneficial for the City of Ryde. I would like to thank Football NSW for its assistance to help make these lighting upgrades possible and also its continued support to helping improve the sporting landscape in the City of Ryde."

For more on the lighting upgrades, check out the video below.

Let's Light Up Football - Football NSW

Your City Winter 2019

Published on 17 July 2019

View Interactive Version

View PDF Version

View the full newsletter: [Your City - Winter 2019](#)

Knitting for good

Published on 16 July 2019



West Ryde Knitting Group

Celebrating its tenth year running, the West Ryde Knitting Group has been feverishly knitting in the lead up to the City of Ryde's annual [Knit In](#) on Friday 2 August. Each year, the event brings together knitters from across the City, including those both in established groups and aspiring knitters, who all make and donate hundreds of lovingly crafted handmade blankets to [Wrap with Love](#). This not-for-profit organisation sends wraps to people in more than 75 countries, including within Australia, with volunteers making, transporting and assembling the blankets.

The West Ryde group meets twice per month at [West Ryde Library](#). There are also knitting groups that meet at Eastwood, Gladesville and Ryde libraries each month.

Prolific knitter Lydia, a Russian speaker who grew up in China, spoke about how the West Ryde group's beauty lies in its inclusiveness and willingness to help others. "We are so lucky to have members from more than 10 different nationalities in our group, with all different skill levels and experience. It's all about sharing, helping and teaching", she said.



West Ryde Knitting Group members hard at work

Others talked about how therapeutic they find the process of knitting, as like any creative process it provides a wonderful escape from ordinary life. "You can pick up your needles anywhere and do some knitting while you're in the car or sitting in front of the television", one member said.

"The best thing is that you feel like you've accomplished something at the end".



Holding up a masterpiece

Everyone's invited to come along to the free City of Ryde Knit In on Friday 2 August from 10.00am-2.00pm at Ryde Library. Light refreshments will be provided.

To find out more about our library knitting groups and other activities, visit our [Library Activities page](#).

City of Ryde Council Meeting Summary - June Meeting

Published on 16 July 2019

Council held its latest Ordinary meeting on 25 June 2019. Here is a summary of the main outcomes from the meeting:

THE 20-YEAR VISION FOR THE CITY OF RYDE PLACED ON PUBLIC EXHIBITION

The City of Ryde's Local Strategic Planning Statement (LSPS) has been placed on public exhibition for the community's feedback. The LSPS is a blueprint for how Council will plan for the future of the City of Ryde, detailing the 20 year vision for a liveable, prosperous and connected City supported by appropriate infrastructure.

The LSPS will be on public display until 12 August.

[Click here for more information.](#)

FOUR YEAR DELIVERY PROGRAM

The City of Ryde has adopted its Four Year Delivery Program 2019-2023 as well as the One Year Operational Plan 2019/20.

Under the Four Year Delivery Program, Council will invest \$711 million over the next four years on projects and services that align with the Community Strategic Plan.

DRAFT MACQUARIE PARK MARKETING PLAN ENDORSED

The draft Macquarie Park Marketing Plan (2019-2023) was endorsed by Council. The marketing plan provides a strategic blueprint for the City of Ryde to deliver greater economic development, marketing and place making outcomes within the Macquarie Park precinct.

The draft plan has now been placed on public exhibition and can be viewed in the [Have Your Say](#) section.

SMALL GRANTS ALLOCATED

More than \$33,000 has been allocated to 18 local community organisations as part of round one of the 2019 Small Grants initiative. The Small Grants are part of the City of Ryde's Community Grants Program and are designed to respond to the changing circumstances and emerging needs between the larger Community Grant rounds.

NEW CRITERIA FOR RESIDENT PARKING SCHEME ENDORSED

Council has endorsed a defined set of criteria that a street will need to meet before it becomes part of a resident parking scheme. Under the criteria on-street parking utilisation rate must be greater than 85 per cent, surveys at three different time

periods on three different days need to be undertaken, and a minimum of 51 per cent of properties surveyed must be in support of the scheme.

A new Draft Permit Parking Policy which reflects the new Roads and Maritime Services Permit Parking Policy will also be placed on public exhibition.

VALE DORIS CARRALL

A minute's silence was observed as a mark of respect to Doris Carrall who recently passed away. Ms Carrall was a member of Council's Access Advisory Committee for 10 years and the Heritage Advisory Committee for two years. The City of Ryde will also donate \$500 to Arthritis NSW in memory of Ms Carrall.

REPORT ON GLYPHOSATE USE TO BE PREPARED

A report will be prepared for Council detailing the use of herbicides that contain Glyphosate (commonly known as 'Roundup') in all City of Ryde-owned and managed areas. The report will also provide information on the current safety advice from state and federal agencies regarding the use of Glyphosate, as well as the current practices of neighbouring councils.

PAINT4FREEDOM ART COMPETITION TO TAKE PLACE

A partnership between the City of Ryde and Ryde Rotary will be established to deliver a Paint4Freedom art competition later this year. Paint4Freedom is a national art competition that aims to educate Australians about the tragedy of modern-day slavery.

RMS ASKED TO CONSIDER PEDESTRIAN SAFETY MEASURES OUTSIDE GLADESVILLE SCHOOLS

The City of Ryde will request that the Roads and Maritime Service conduct a pedestrian safety audit on Victoria Road and Potts Street, Gladesville, outside Holy Cross College and St Charles Primary School. Council will also request that pedestrian safety measures such as barriers and footbridges be considered by the RMS in the vicinity of both schools.

WORLD CUP STREET FOOTBALL TOURNAMENT SUPPORTED

A proposal for Melrose Park Football Club to host a Ryde City World Cup Street Football Tournament has won the support of Council. The aim of the event is to contribute to the social dynamic of Ryde through encouraging local community groups from a variety of cultures and backgrounds to participate in the tournament.

CORK AND FORK FESTIVAL HAILED A SUCCESS

Council recognised the outstanding efforts of the City of Ryde Events and Operations staff in delivering a highly successful Cork and Fork Festival in May. A report will be prepared for Council exploring additional funding for the Cork and Fork Festival as the City of Ryde Lunar New Year Festival and West Ryde Easter Parade and Fair.

ADDITIONAL OUTDOOR YOUTH SPACE A POSSIBILITY

Following the opening of Meadowbank Skate Park earlier this year, Council will investigate a suitable location in the City of Ryde for an additional outdoor youth space which could include a BMX VRamp, pumptrack and a mountain bike track.

MILESTONES RECOGNISED BY COUNCIL

A morning tea will be held by Council to recognise the contribution made by John Booth and The Weekly Times newspaper to the Ryde community. The morning tea follows Mr Booth celebrating his 40th year as owner and managing editor of The Weekly Times newspaper.

A morning tea will also be held to commemorate the 30th anniversary of the Korean Nurses Association of Australia, which is located in West Ryde.

TOY LIBRARY NOW OPEN TO GRANDPARENTS

The procedure for borrowing toys via the popular Toy Library at North Ryde Library will be amended to allow grandparents who are library members to borrow toys on behalf of their grandchildren.

NEXT MEETING

The next Ordinary Council meeting will take place on Tuesday 23 July 2019.

The architects behind The New Heart of Ryde

Published on 15 July 2019



Gabriel Duque, Rido Pin and the Mayor on the roof of the Civic Centre building

We took to the roof of the old Ryde Civic Centre with the Mayor, Cllr Jerome Laxale, and [The New Heart of Ryde](#) architects, Plus Architecture.

Rido Pin and Gabriel Duque from [Plus Architecture](#) spoke to us about the project and what it means to them. Founded in 1997, Plus Architecture is an award-winning integrated architecture, master planning and interior design firm with offices across Australia and New Zealand. Plus Architecture is recognised for its design ethos and ability to deliver projects in a diverse spectrum of scale and typology.

What do you see as the key drivers behind The New Heart of Ryde project?

Rido: Our design process has been based on strong urban design principles following our analysis of the site. Understanding the impact of scale, proportions and height in relation to the immediate context was essential to come to a design solution which meets the objectives of Council, creating a place for the community. More than anything the design is driven by connectivity to the context and its community. The project will bring people together in this unique community precinct. The proposed central plaza and public domain is very important, and how it will interact with the foyer areas of the community and civic building. We see a dynamic, lively and inspiring range of spaces filled with people enjoying the landscape, art and activity that brings the community together.

Transparency is at the heart of the design concept. Council staff are a part of the City of Ryde community, and at both a metaphorical and practical level, The New Heart of Ryde will be a place of openness, inclusion and connection, where you'll be able to see the plaza from many angles and Council at work - serving its community in a very visual way.

How are you approaching the design?

Rido: Through our investigations of the site we have been able to achieve a clear and balanced outcome of form, scale, connectivity and environmental considerations in relation to the context which creates a great outcome for the community. We see it as an exemplary project in terms of efficiency and sustainability, with the ability to collect and reuse water, minimizes waste and carefully considers energy use. The materials should be durable to ensure this civic and community hub remains an iconic building for years to come.

What do you think the benefits are of the Ryde Civic Centre site?

Gabriel: Standing up on the rooftop of the old Civic Centre today, it's evident that the expansive views that the site offers should be embraced. Located at the top of a hill, the site is a place where people will gravitate to and this needs to be amplified in the design. Success in terms of design is not limited to the building itself, but rather how people interact with the space surrounding the building. It should be a place people want to casually come together.

What led you to undertaking this project?

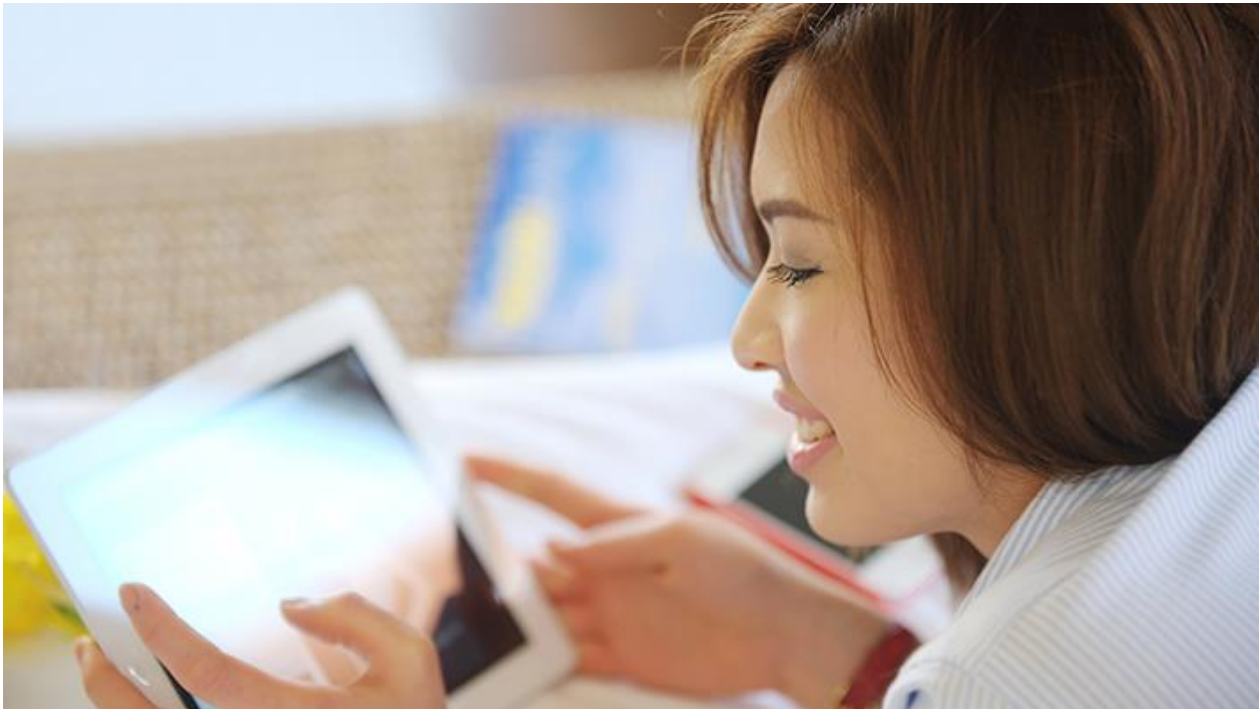
Rido: We both have a strong understanding of the urban story having worked on a diverse range of projects. Our projects help to shape our cities with a strong focus on the public benefits and incorporate community buildings and spaces. Plus Architecture designed a community centre and library in Christchurch, New Zealand, following the devastating earthquake there. We wanted to acknowledge the past while building a new space for the future, and used recycled bricks that came from the rubble in the construction of the new building.

Gabriel: I have been working in Australia in the architecture field for more than 15 years and feel that The New Heart of Ryde offers a unique opportunity to implement lessons we've learned and create something special for the City of Ryde community.

To find out more about The New Heart of Ryde project, including the history, answers to frequently asked questions and more, visit www.ryde.nsw.gov.au/heart.

Pay your rates with direct debit

Published on 11 July 2019



The City of Ryde is making it easier for you to pay your rates, with a new direct debit option now available.

The new option allows for all ratepayers to have their rates direct debited from a nominated cheque or savings account.

Each direct debit would occur on a quarterly basis and in line with the rates instalment. To complete the online form visit our [Direct debits page](#).

To access the direct debit option, an online form must be completed and a bank account nominated.

The new payment option is part of the City of Ryde's efforts to provide ratepayers with more ways in which they can pay their rates.

In addition to the direct debit option, Council also recently introduced BPAY payments for sundry debtors.

The full list of options offered by Council for rate payments is as follows:

- Direct debit: Sign up now at www.ryde.nsw.gov.au/directdebits
- Internet banking: Either through BPAY (Biller Code 5330) or by visiting Council's website and clicking on 'Make a Payment'
- Phone: BPAY (Biller Code 5330) or credit card payments (MasterCard and Visa only)

- In person: Present your rates notice at any City of Ryde outlet or Australia Post outlet and you will be have the option of paying with cash, cheque or EFTPOS
- Mail: Send your cheque or money order payable to the City of Ryde to City of Ryde, Locked Bag 2069, North Ryde NSW 1670.

The City of Ryde sends out rates notices in January, April, July and October either by post or electronically. Those who would like to receive their rates notice electronically are required to register on our [Switch to email notification page](#).

A new view of The New Heart of Ryde

Published on 09 July 2019



An indicative image of how the roof top areas could be utilised at The New Heart of Ryde

The City of Ryde has released a new indicative image detailing how the roof top areas could be utilised at The New Heart of Ryde.

The New Heart of Ryde features two buildings, a flexibly-designed, multi-purpose cultural and community space, and a space with offices, childcare facilities, commercial and retail facilities, a plaza and open space, on-site basement parking, public meeting rooms and Council chambers.

It is envisaged that the roof tops of the two buildings could be activated to include facilities catered for recreation and entertainment activities while providing the community with stunning views of western Sydney and beyond.

“Not only will The New Heart of Ryde create more community space, it will also will provide much needed function venues that our City is crying out for. The top level roof top bar will be the perfect local public space for residents to hold family functions with gorgeous western views,” City of Ryde Mayor, Clr Jerome Laxale, said.

The New Heart of Ryde will not have any residential development on the site. The proposal is financially sustainable and will not result in increased rates or cuts to any services.

The City of Ryde encourages all members of the community to have their say on all aspects of The New Heart of Ryde proposal, with formal consultation taking place until 25 August.

Submissions can be made:

- Through the online survey at www.ryde.nsw.gov.au/heart
- By email at cityofryde@ryde.nsw.gov.au
- By post to General Manager, City of Ryde, Locked Bag 2069, North Ryde NSW 1670.

[Click here](#) for more information on The New Heart of Ryde.

Top Things to do this Winter in Ryde

Published on 04 July 2019



First-class sporting facilities at Christie Park

The weather is cool, the days are short and while many people prefer to stay indoors during the winter months there are still plenty of great activities going on in the City of Ryde during this time of the year for the whole community to enjoy.

1. Join up, join in at Ryde Libraries

Winter is the perfect time to read that book you have been meaning to get to and becoming a member of [Ryde Library Service](#) doesn't just give you access to thousands of books, but also a number of services to make you glad to be indoors.

This includes access to free Wi-Fi and PCs, a 24/7 online library, children's programs and ancestry research tools. And just last month, [The Hive Digital Media Lab](#) opened, giving library members free access to creative software for design, 3D modelling, web and app development, as well as image, audio and video editing software.

So what are you waiting for? Become a member by visiting any one of our local library branches in Ryde, Eastwood, Gladesville, West Ryde and North Ryde. For more information, visit our [Library page](#).



Sign up for a free membership to receive access to great resources

2. Turn that junk into a masterpiece

You may not know it, but your growing collection of household recycling items could actually be a magnificent piece of art.

To prove it, this winter the City of Ryde is staging its [Sustainable Waste to Art Prize](#) (commonly known as SWAP). This is one of the more unique events held by Council in which we ask members of the community to express their creativity by turning their repurposed rubbish and recovered materials into works of art.

Applications for this year's prize are now open, and will close on Monday 12 August. Winners will be announced at a special gallery opening event at See Street Gallery in Meadowbank on 18 September. This event will also mark the opening of the SWAP exhibition, which will showcase around 80 of the entries for this year's award up until Thursday 3 October.

To submit your entry or find our more, visit the [Sustainable Waste to Art Prize page](#).



Sustainable Waste to Art Prize

3. Surfin' Sundays at the RALC

Getting in the water may not be the first thing that springs to mind in the depths of winter, but the activities taking place at the [Ryde Aquatic Leisure Centre](#) (RALC) will change your thinking.

One of the highlights is [Surfin' Sunday](#), which is a great day out for the whole family. Running on the last Sunday of each month, families can purchase a Family pass (two adults and three children or one adult and four children) for a discounted rate of \$20.

This pass gives all recipients access to the RALC's giant water inflatable course, 40-metre wave pool, junior and giant water slides and much more. Even better, all the pools at RALC are heated. For more information, visit the [Ryde Aquatic Leisure Centre page](#).



Ryde Aquatic Leisure Centre

4. Thursdays with Venture Cafe

Renowned Italian author Pietro Aretino once wrote, "Let us love winter, for it is the spring of genius". For those that think Mr Aretino was on to something, then the new [Venture Café Sydney](#), located in the heart of Macquarie Park, is just for you!

Each Thursday Venture Café Sydney delivers a weekly program to connect people from Sydney's budding innovation and start-up community. It creates intentional spaces for individuals and organisations to gather, connect and build relationships.



Venture Café, Macquarie Park

5. Take advantage of our first-class sporting facilities

Gone are the days where winter meant regular cancelled sporting fixtures and closed sporting fields.

Due to a commitment from the City of Ryde to provide high quality outdoor sporting facilities all year round, there are now two synthetic playing fields at [Christie Park](#), in Macquarie Park, and one at North Ryde's [ELS Hall Park](#).

Each of these playing fields offer consistent playing surfaces 365 days of the year, even during the coldest and wettest periods. So grab some friends and check out these first-class facilities this winter.



Check out our first-class sporting facilities

Planning Ryde: Have your say on the 20-year vision for the City of Ryde

Published on 01 July 2019



The City of Ryde's Local Strategic Planning Statement (LSPS) has been placed on public exhibition for the community's feedback.

The LSPS is a blueprint for how Council will plan for the future of the City of Ryde, detailing the 20 year vision for a liveable, prosperous and connected City supported by appropriate infrastructure.

The LSPS has been informed by Council's Community Strategic Plan, the plan for the City of Ryde by the people of the City of Ryde. The vision described in the plan has been built into the priorities and actions of the LSPS. It has also been structured to show consistency with the Greater Sydney Commission's North District Plan which sets out planning priorities and actions to be implemented by councils in the district.

The City of Ryde is focused on ensuring the area continues to be liveable as it grows and making sure suburbs look and function the way the community needs them to.

The LSPS will be on public display from 1 July to 12 August. During this time, we want to hear from you as part of the planning process. By having your say, you can help to plan the future of our community.

[Click here](#) for more information on the LSPS and to complete the online survey.

For those who would like to provide their feedback in person or ask questions, Council staff will be visiting the following areas:

Date	Time	Location
Tuesday 9 July	10am - 12pm	Ryde Aquatic Leisure Centre
	2pm - 4pm	Top Ryde Shopping Centre
Saturday 20 July	10am - 12pm	Eastwood Mall
	2pm - 4pm	Coxs Road Mall (near the library)
Saturday 27 July	10am - 12pm	Meadowbank Park (near the netball courts)
	2pm - 4pm	West Ryde Marketplace
Friday 2 August	8.30am - 10.30am	Trim Place, Gladesville
Saturday 3 August	10am - 5pm	Macquarie Centre
Thursday 8 August	1pm - 3pm	Macquarie University (18 Wally's Walk)
	5pm - 7pm	Venture Cafe