

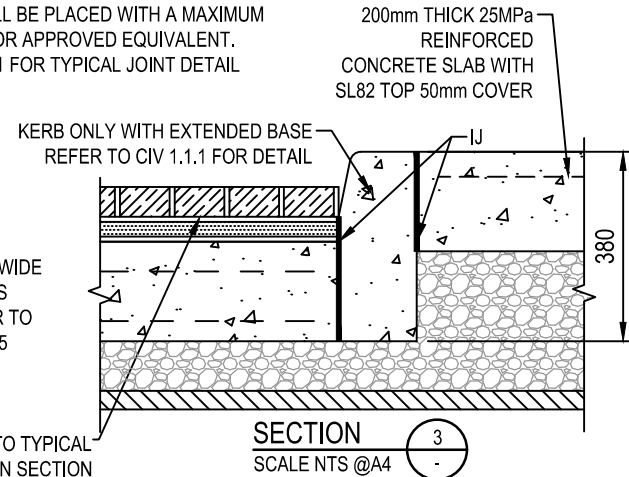
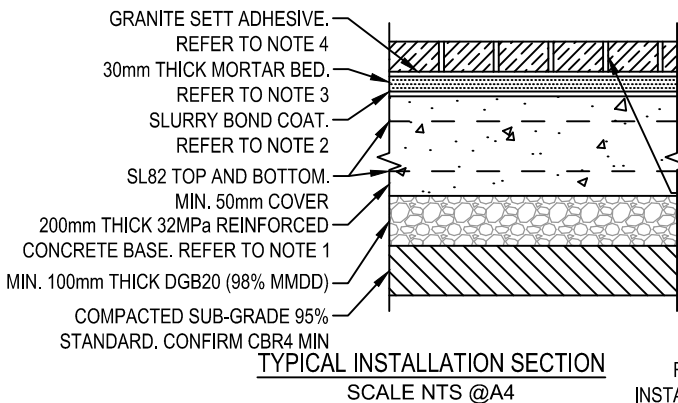
**NOTES:**

1. SURFACE SHALL BE MADE PLUMB AND TRUE WITHIN 3mm AND SHALL HAVE A WOODEN FLOAT FINISH.
2. MORTAR BED SHALL BE LAID WHILE THE SLURRY BOND COAT IS STILL WET & TACKY.
3. 30mm THICK MORTAR BEDDING FINISHED TO A WOOD FLOAT QUALITY. THE BEDDING SHALL BE OF MODIFIED MORTAR (3:1 SAND:CEMENT) MIXED WITH MORTAR ADMIX AS PER THE SUPPLIER'S

**SPECIFICATIONS**

4. THE PORPHYRY SETTS SHALL BE ADHERED TO THE CURED BEDDING USING A MIX OF PREMIUM MORTAR & ADMIX AS PER THE SUPPLIER'S SPECIFICATIONS USE MODIFIED MORTAR (3:1 SAND:CEMENT) MIXED WITH MORTAR ADMIX, BED MORTAR TO MATCH SETTS COLOUR
5. CONCRETE SHALL BE PLACED WITH A MAXIMUM SUMP OF 80mm OR APPROVED EQUIVALENT.
6. REFER TO CIV. 11 FOR TYPICAL JOINT DETAIL

**COPYRIGHT © 2011 City of Ryde - ALL RIGHTS RESERVED**  
 No part of this document shall be modified or reproduced without written permission.  
 Go to [www.ryde.nsw.gov.au/disclaimer](http://www.ryde.nsw.gov.au/disclaimer) to view the Standard Drawings Disclaimer



AUSTRALIAN PORPHYRY STONE SPECIFICATION	
BULK SPECIFIC GRAVITY (t.m <sup>3</sup> )	2.7
WATER ABSORPTION (MEAN) % BY WEIGHT	0.30
% BY VOLUME	0.81
MODULUS OF RUPTURE (MPa) DRIED STRENGTH	23.2
SOAKED STRENGTH	27.5
COMPRESSIVE STRENGTH (MPa) DRIED STRENGTH	147.4
ABRASION RESISTANCE ABRASION INDEX (Ha)	52
RESISTANCE TO SALT ATTACK WEIGHT LOSS (wt%) MODE OF DECAY	<0.01 NO DECAY VISIBLE
SLIP RESISTANCE AS/NZS4586:1999 BRITISH PENDULUM NUMBER (WET) CONTRIBUTION TO RISK OF SLIPLING	64 V GLASS - VERY LOW
AS/NZS3661.1:193 COEFFICIENT OF FRICTION (WET)	0.63

ABN: 61 621 292 610  
 LEVEL 1, BUILDING 0, BINARY CENTRE, 3 RICHARDSON PLACE, NORTH RYDE NSW 2113  
 Locked Bag 2069 NORTH RYDE NSW 1670  
 Email: [cityofryde@ryde.nsw.gov.au](mailto:cityofryde@ryde.nsw.gov.au)  
 Web: [www.ryde.nsw.gov.au](http://www.ryde.nsw.gov.au)  
 Tel: (02) 9952 8222  
 Fax: (02) 9952 8070

STANDARD DRAWING  
**PORPHYRY SETTS VEHICULAR PAVEMENT**

APPROVED VP DESIGN MANAGER	DATE 18/07/2018
DRAWING NUMBER CIV.13	REVISION C

COPYRIGHT © 2011 City of Ryde - ALL RIGHTS RESERVED. No part of this document shall be reproduced without written permission.