

LANDSCAPE DESIGN DRAWINGS

FOR
1 - 20 Railway Road
Meadowbank NSW

DRAWING LIST:

Ref	Title	Scale
LP00	Title Sheet	1:1 @ A3
LP01	Landscape Plan: Ground Floor	1:500 @ A3
LP02	Landscape Plan: Level 1 (north)	1:250 @ A3
LP03	Landscape Plan: Level 1 (south)	1:250 @ A3
LP04	Landscape Plan: Level 2 & 3	1:500 @ A3
LP05	Landscape Plan: Level 4 & 5	1:500 @ A3
LP06	Landscape Plan: Level 6	1:500 @ A3
LP07	Landscape Plan: Level 7 (north)	1:200 @ A3
LP08	Landscape Plan: Level 7 (south)	1:200 @ A3
LP09	Schedule	1:1 @ A3
LP10	Paradiam Images	1:1 @ A3
LP11	Levels Plan: Level 1 (north)	1:250 @ A3
LP12	Levels Plan: Level 1 (south)	1:250 @ A3
LP13	Landscape Sections 01	1:100 @ A3
LP14	Landscape Sections 02	AS @ A3

28 January 2022

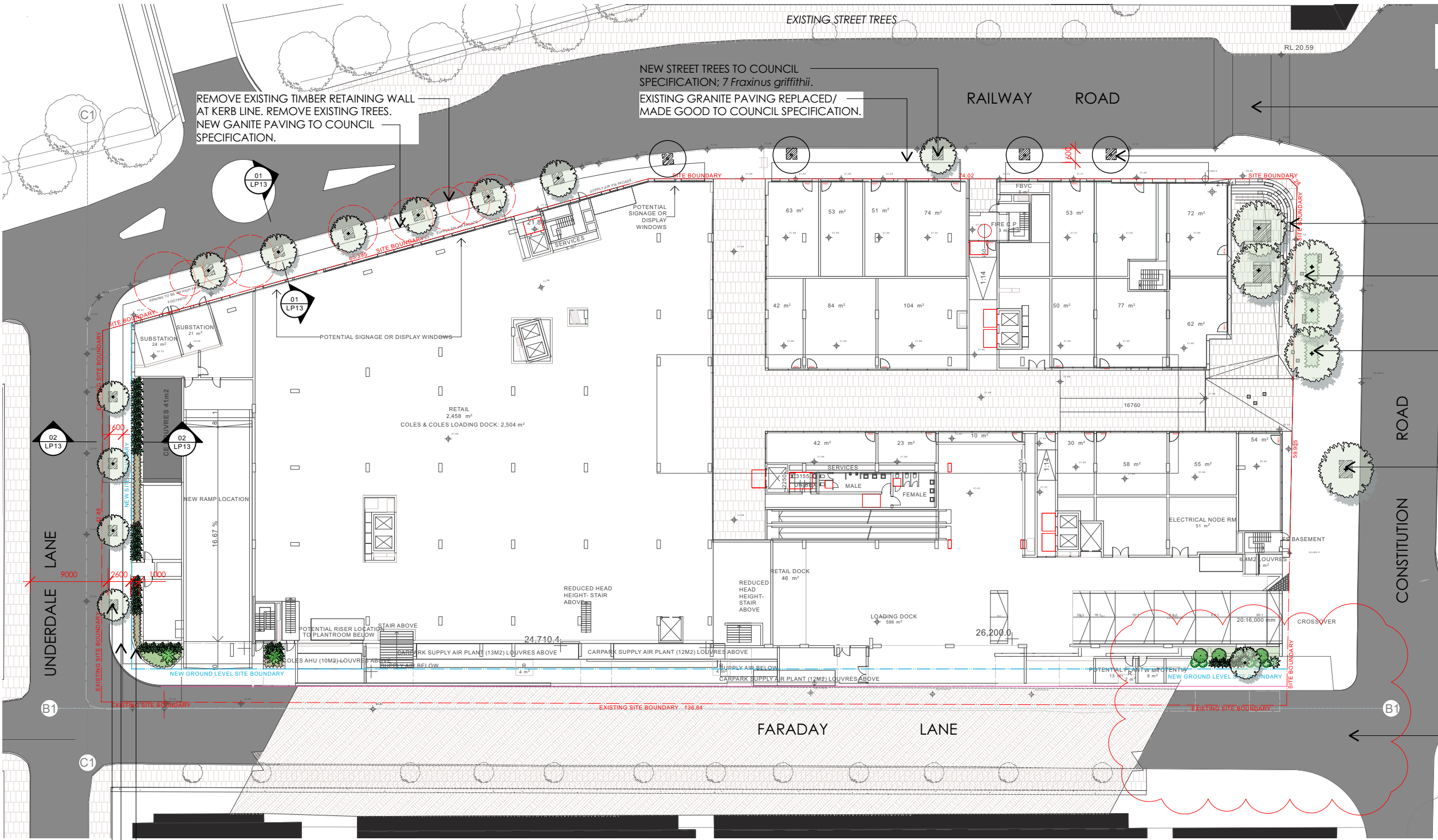
DEVELOPMENT APPLICATION



Matthew Higginson Landscape Architecture Pty Ltd
po box 353 five dock nsw 2046
t 0414 725 944 w www.mhla.com.au

client
SASCO Developments

1 - 20 RAILWAY ROAD



- EXISTING TRAFFIC LIGHTS AND PEDESTRIAN CROSSING RETAINED
- EXISTING STREET TREES TO RAILWAY ROAD TO BE RETAINED.
- SEATING INCORPORATED IN STEPS AS MONOLITHIC PROJECTION OF STEP TREADS.
- MONOLITHIC SEATS SCATTERED BELOW TREE CANOPY.
- NEW STREET TREE PLANTING SETBACK FROM KERB TO DEFINE DEVELOPMENT FORECOURT;
5 *Corymbia citriodora*.
SURROUND IN 3m x 1.5m MASS PERENNIALS.
- NEW STREET TREE PLANTING TO COUNCIL SPECIFICATION; 1 *Angophora costata*

FARADAY LANE TO BE RE-GRADED TO PROVIDE TWO-WAY VEHICLE CONNECTION TO CONSTITUTION ROAD. SEE LP02.

G	28.01.22	Update Faraday/ Constitution junction. DA issue
F	02.12.21	Update planters. DA issue
E	26.11.21	Update GF, awnings, balc planters. DA issue
D	02.11.21	Amend to comments. DA issue
C	09.12.20	Update to arch. Amend to comments. DA issue
B	22.05.20	Amend to comments. DA issue
A	21.05.20	Update to Arch. DA issue
01	23.02.20	Preliminary issue for coordination.
issue	date	description

project

Railway Road
Meadowbank NSW

client

Sasco Developments Pty Ltd

drawing title

Landscape Plan : Ground Floor

scale

1:500 @ A3

project no.

19836

drawing no.

LP01

issue

G

DEVELOPMENT APPLICATION

notes: This drawing has been prepared for consideration and reference in the communication of conceptual ideas and is not intended as a detailed 'For Construction' document. No guarantee is given to the accuracy in location or size of existing or proposed elements, measurements or nominated or figured dimensions. Do not scale drawing. Drawing and content protected by copyright.

- 1m WIDE PLANTER WITH SHADE TOLERANT FOLIAGE PLANTING TO SOFTEN SOUTHERN ELEVATION
- NEW FOOTPATH ALIGNMENT WITH GRANITE PAVING TO COUNCIL SPECIFICATION.
- NEW STREET TREES TO COUNCIL SPECIFICATION;
4 *Magnolia 'Little Gem'*

- NOTES:
1. STREET TREES TO BE PLANTED IN VAULTED SOIL SYSTEM EQUAL TO CITYGREEN® STRATAVAULT™ AND INSTALLED TO MANUFACTURERS DETAIL.
2. INDICATIVE VAULT SIZING: (SUBJECT TO DETAIL DESIGN)
- RAILWAY ROAD & UNDERDALE LANE : 3.5m x 1.5m (TARGET SOIL VOLUME: 5m3 PER TREE)
- CONSTITUTION ROAD: 5m x 5m (TARGET SOIL VOLUME: 25m3 PER TREE)
3. FOOTPATH PAVING AND TREE PIT DETAIL TO COUNCIL SPECIFICATION, BEING:
- CONSTITUTION ROAD & RAILWAY RD : GRANITE PAVING WITH GRATED TREE PIT COVER
- UNDERDALE LANE : GRANITE PAVING WITH RESIN BOUND AGGREGATE INFILL.

LEGEND:

EXISTING TREE - RETAIN

EXISTING TREE - REMOVE

NEW TREE - CANOPY

NEW TREE - PALM

SITE BOUNDARY

EXISTING SPOT LEVEL

PROPOSED SPOT LEVEL

TURF / LAWN

AS SELECTED TILE/ PAVER

AS SELECTED TILE/ PAVER

HARDWOOD TIMBER DECKING
'Spotted Gum' or equal.

IN-SITU CONCRETE PAVING
Plain, uncoloured concrete.
Non-Slip (Broom) finish.





NOTES:
1. SOIL VOLUMES FOR ON PODIUM GARDENS TO BE PROVIDED IN ACCORDANCE WITH NSWDPIC APARTMENT DESIGN GUIDE PART 4, TABLE 5.

2. INDICATIVE SOIL VOLUME/ DEPTH SUBJECT TO DETAIL DESIGN AS FOLLOWS:
- SMALL TREES = 9m³ SOIL VOLUME PER TREE
- PALMS = min. 3m³ SOIL VOLUME PER TREE
- SHRUBS = min. 500mm DEPTH
- GROUNDCOVERS = min. 300mm DEPTH
- TURF = min. 200mm DEPTH

REFER TO DRAWING LP11 FOR LEVELS AND SOIL DEPTHS.

1m DEEP PLANTER TO PARAPET.

PLANTING TO PROVIDE SEPARATION BETWEEN COMMON OPEN SPACE AND PRIVATE BALCONIES.

- Buxus
- Aspidistra
- Liriope
- Sansevieria

MASS PLANTED SHRUBS TO MAX. 1m TALL;

- Rhampholepis
- Lomandra 'Tanika'
- Pennisetum 'Nafay'
- Brachyscome
- Helichrysum

MIXED NATIVE TREES OF PALMS AND CANOPY SPECIES;

- Elaeocarpus eumundii (Ee)
- Elaeocarpus reticulatus (Er)
- Livistona australis (La)
- Cyathea australis (Ca)
- Cyathea cooperi (Cc)

ORNAMENTAL TREE FOR SEASONAL INTEREST; Magnolia x soulagenea (Ms) OR SIMILAR.

LAYERED PLANTING TO PROVIDE SEPARATION BETWEEN COMMON OPEN SPACE AND PRIVATE BALCONIES.

- Buxus
- Aspidistra
- Philodendron
- Sansevieria

G	12.01.22	Update Faraday Lane planters. DA Issue
F	02.12.21	Update planters. DA issue
E	26.11.21	Update GF, awnings, balc planters. DA issue
D	02.11.21	Amend to comments. DA issue
C	09.12.20	Update to arch. Amend to comments. DA issue
B	22.05.20	Amend to comments. DA issue
A	21.05.20	Update to Arch. DA issue
01	23.02.20	Preliminary issue for coordination.
issue	date	description

project
**Railway Road
Meadowbank NSW**

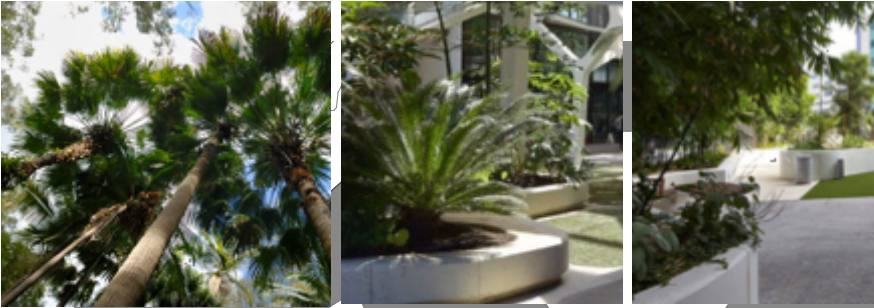
client
Sasco Developments Pty Ltd

drawing title
Landscape Plan : Level 1 (north)

scale	project no.	drawing no.	issue
1:250 @ A3	19836	LP02	G

DEVELOPMENT APPLICATION

notes: This drawing has been prepared for consideration and reference in the communication of conceptual ideas and is not intended as a detailed 'For Construction' document. No guarantee is given to the accuracy in location or size of existing or proposed elements, measurements or nominated or figured dimensions. Do not scale drawing. Drawing and content protected by copyright.



SCREEN PLANTING TO SOFTEN ELEVATION AND BACKDROP C.O.S ;
- Syzygium 'Select'

REFER TO LP01 FOR LANDSCAPING AT STREET LEVEL TO RAILWAY ROAD.

MHLA

Matthew Higginson
Landscape Architecture Pty Ltd
po box 353 five dock nsw 2046
www.mhla.com.au t 0414 725 944

NOTES:
1. SOIL VOLUMES FOR ON PODIUM GARDENS TO BE PROVIDED IN ACCORDANCE WITH NSWDPIC APARTMENT DESIGN GUIDE PART 4, TABLE 5.

2. INDICATIVE SOIL VOLUME/ DEPTH SUBJECT TO DETAIL DESIGN AS FOLLOWS:
- SMALL TREES = 9m³ SOIL VOLUME PER TREE
- PALMS = min. 3m³ SOIL VOLUME PER TREE
- SHRUBS = min. 500mm DEPTH
- GROUNDCOVERS = min. 300mm DEPTH
- TURF = min. 200mm DEPTH

REFER TO DRAWING LP12 FOR LEVELS AND SOIL DEPTHS.

PLANTING TO PROVIDE SEPARATION BETWEEN COMMON OPEN SPACE AND PRIVATE BALCONIES.

- Buxus
- Aspidistra
- Philodendron
- Sansevieria

MIXED NATIVE CANOPY;
- Livistona australis (La)
- Cyathea australis (Ca)
- Cyathea cooperi (Cc)
- Elaeocarpus reticulatus (Er)
- Elaeocarpus eumundii (Ee)

PLANTING TO PROVIDE SEPARATION BETWEEN COMMON OPEN SPACE AND PRIVATE BALCONIES.

- Rhipidolepis
- Aspidistra
- Philodendron
- Sansevieria

G	12.01.22	Update Faraday Lane planters. DA Issue
F	02.12.21	Update planters. DA issue
E	26.11.21	Update GF, awnings, balc planters. DA issue
D	02.11.21	Amend to comments. DA issue
C	09.12.20	Update to arch. Amend to comments. DA issue
B	22.05.20	Amend to comments. DA issue
A	21.05.20	Update to Arch. DA issue
01	23.02.20	Preliminary issue for coordination.
issue	date	description

project

**Railway Road
Meadowbank NSW**

client

Sasco Developments Pty Ltd

drawing title

Landscape Plan : Level 1 (south)

scale	project no.	drawing no.	issue
1:250 @ A3	19836	LP03	G

DEVELOPMENT APPLICATION

notes: This drawing has been prepared for consideration and reference in the communication of conceptual ideas and is not intended as a detailed 'For Construction' document. No guarantee is given to the accuracy in location or size of existing or proposed elements, measurements or nominated or figured dimensions. Do not scale drawing. Drawing and content protected by copyright.



NOTES:
1. SOIL VOLUMES FOR ON PODIUM GARDENS TO BE PROVIDED IN ACCORDANCE WITH NSWDPIC APARTMENT DESIGN GUIDE PART 4, TABLE 5.
2. INDICATIVE SOIL VOLUME/ DEPTH SUBJECT TO DETAIL DESIGN AS FOLLOWS:
- SHRUBS = min. 500mm DEPTH
- GROUNDCOVERS = min. 300mm DEPTH



01 Landscape Plan : Level 2
Scale: 1:500



02 Landscape Plan : Level 3
Scale: 1:500

F	02.12.21	Update planters, DA issue
E	26.11.21	Update GF, awnings, balc planters, DA issue
D	02.11.21	Amend to comments, DA issue
C	09.12.20	Update to arch, Amend to comments, DA issue
B	22.05.20	Amend to comments, DA issue
A	21.05.20	Update to Arch, DA issue
01	23.02.20	Preliminary issue for coordination.
issue	date	description

project
**Railway Road
Meadowbank NSW**

client
Sasco Developments Pty Ltd

drawing title
Landscape Plan : Level 2 & 3

scale project no. drawing no. issue
1:500 @ A3 19836 LP04 F

DEVELOPMENT APPLICATION

notes: This drawing has been prepared for consideration and reference in the communication of conceptual ideas and is not intended as a detailed 'For Construction' document. No guarantee is given to the accuracy in location or size of existing or proposed elements, measurements or nominated or figured dimensions. Do not scale drawing. Drawing and content protected by copyright.

NOTES:
1. SOIL VOLUMES FOR ON PODIUM GARDENS TO BE PROVIDED IN ACCORDANCE WITH NSWDPIC APARTMENT DESIGN GUIDE PART 4, TABLE 5.
2. INDICATIVE SOIL VOLUME/ DEPTH SUBJECT TO DETAIL DESIGN AS FOLLOWS:
- SHRUBS = min. 500mm DEPTH
- GROUNDCOVERS = min. 300mm DEPTH



F	02.12.21	Update planters, DA issue
E	26.11.21	Update GF, awnings, balc planters, DA issue
D	02.11.21	Amend to comments, DA issue
C	09.12.20	Update to arch. Amend to comments, DA issue
B	22.05.20	Amend to comments, DA issue
A	21.05.20	Update to Arch, DA issue
01	23.02.20	Preliminary issue for coordination.
issue	date	description

project
**Railway Road
Meadowbank NSW**

client
Sasco Developments Pty Ltd

drawing title
Landscape Plan : Level 4 & 5

scale
1:500 @ A3

project no.
19836

drawing no.
LP05

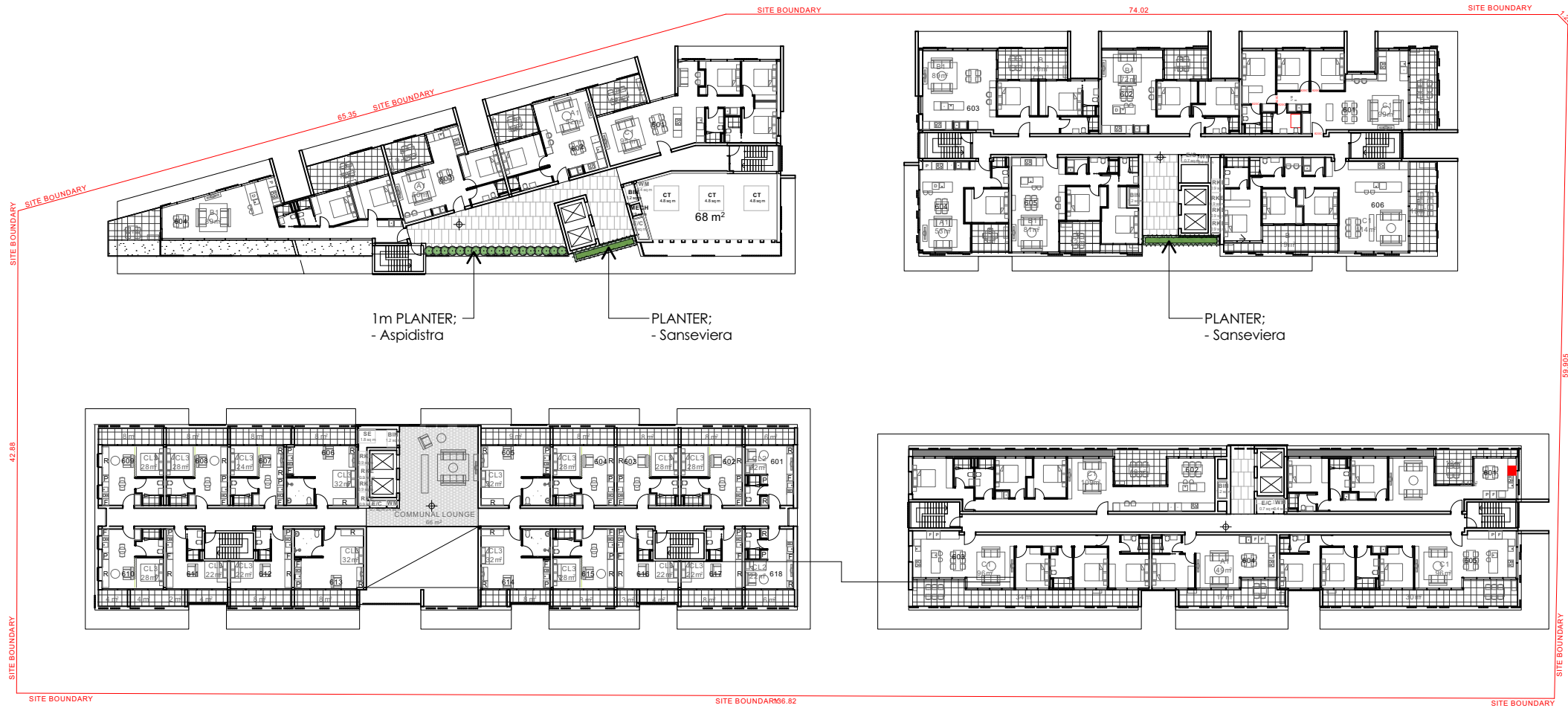
issue
F

DEVELOPMENT APPLICATION

notes: This drawing has been prepared for consideration and reference in the communication of conceptual ideas and is not intended as a detailed 'For Construction' document. No guarantee is given to the accuracy in location or size of existing or proposed elements, measurements or nominated or figured dimensions. Do not scale drawing. Drawing and content protected by copyright.

NOTES:

1. SOIL VOLUMES FOR ON PODIUM GARDENS TO BE PROVIDED IN ACCORDANCE WITH NSWDPIC APARTMENT DESIGN GUIDE PART 4, TABLE 5.
2. INDICATIVE SOIL VOLUME/ DEPTH SUBJECT TO DETAIL DESIGN AS FOLLOWS:
 - SHRUBS = min. 500mm DEPTH
 - GROUNDCOVERS = min. 300mm DEPTH



01

Landscape Plan : Level 6
Scale: 1:500

F	02.12.21	Update planters. DA issue
E	26.11.21	Update GF, awnings, balc planters. DA issue
D	02.11.21	Amend to comments. DA issue
C	09.12.20	Update to arch. Amend to comments. DA issue
B	22.05.20	Amend to comments. DA issue
A	21.05.20	Update to Arch. DA issue
01	23.02.20	Preliminary issue for coordination.
issue	date	description

client
Sasco Developments Pty Ltd

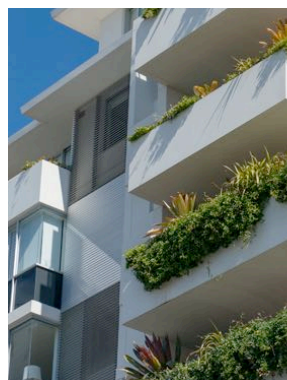
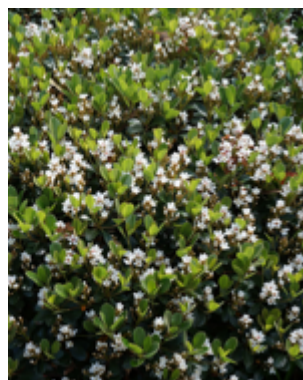
drawing title

Landscape Plan : Level 6

scale	project no.	drawing no.	issue
1:500 @ A3	19836	LP06	F

DEVELOPMENT APPLICATION

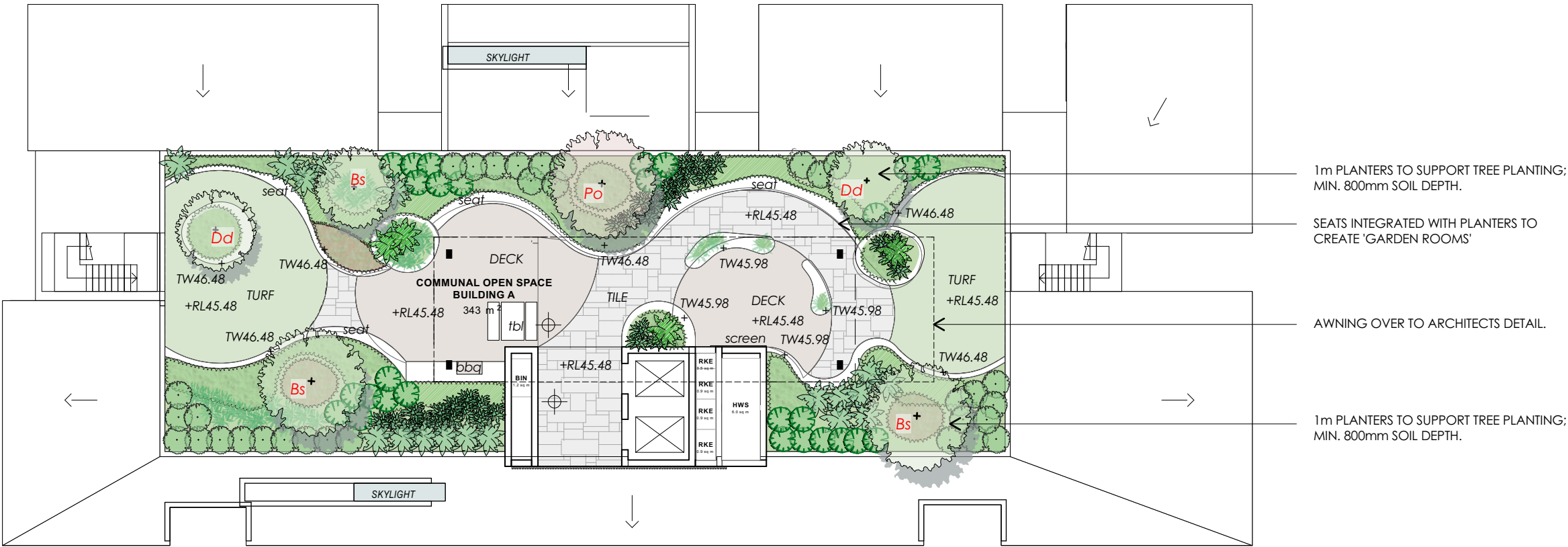
notes: This drawing has been prepared for consideration and reference in the communication of conceptual ideas and is not intended as a detailed 'For Construction' document. No guarantee is given to the accuracy in location or size of existing or proposed elements, measurements or nominated or figured dimensions. Do not scale drawing. Drawing and content protected by copyright.



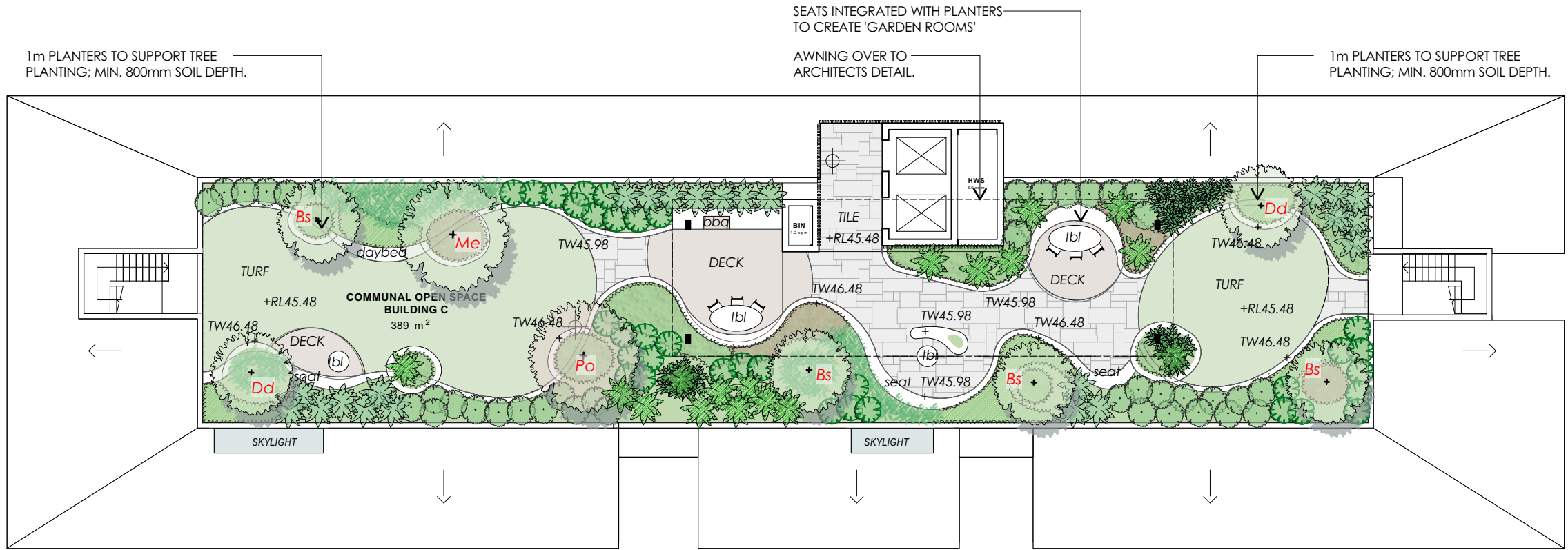
NOTES:
1. SOIL VOLUMES FOR ON PODIUM GARDENS TO BE PROVIDED IN ACCORDANCE WITH NSWDPIC APARTMENT DESIGN GUIDE PART 4, TABLE 5.

2. INDICATIVE SOIL VOLUME/ DEPTH SUBJECT TO DETAIL DESIGN AS FOLLOWS:
- SMALL TREES = 9m3 SOIL VOLUME PER TREE
- SHRUBS = min. 500mm DEPTH
- GROUNDCOVERS = min. 300mm DEPTH
- TURF = min. 200mm DEPTH

MIXED CANOPY OF SMALL TREES;
- Banksia serrata (Bs)
- Dracaena draco (Dd)
- Metrosideros excelsa (Me)
- Plumeria obtusa (Po)



01 Building A Roof Terrace
Scale: 1:200



02 Building C Roof Terrace
Scale: 1:200

F	02.12.21	Update planters, DA issue
E	26.11.21	Update GF, awnings, balc planters, DA issue
D	02.11.21	Amend to comments, DA issue
C	09.12.20	Update to arch. Amend to comments, DA issue
B	22.05.20	Amend to comments, DA issue
A	21.05.20	Update to Arch, DA issue
01	23.02.20	Preliminary issue for coordination.
issue	date	description

project
**Railway Road
Meadowbank NSW**

client
Sasco Developments Pty Ltd

drawing title
Landscape Plan : Level 7 (north)

scale
1:200 @ A3

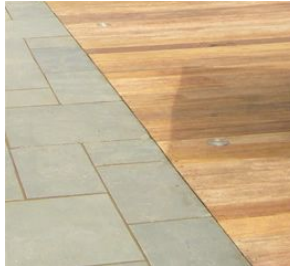
project no.
19836

drawing no.
LP07

issue
F

DEVELOPMENT APPLICATION

notes: This drawing has been prepared for consideration and reference in the communication of conceptual ideas and is not intended as a detailed 'For Construction' document. No guarantee is given to the accuracy in location or size of existing or proposed elements, measurements or nominated or figured dimensions. Do not scale drawing. Drawing and content protected by copyright.



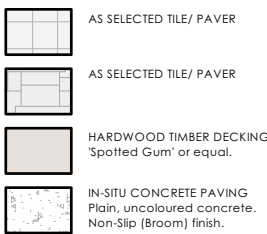
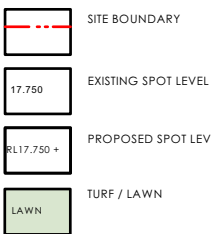
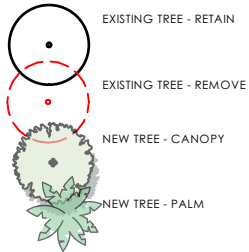
Flush deck inset to paving

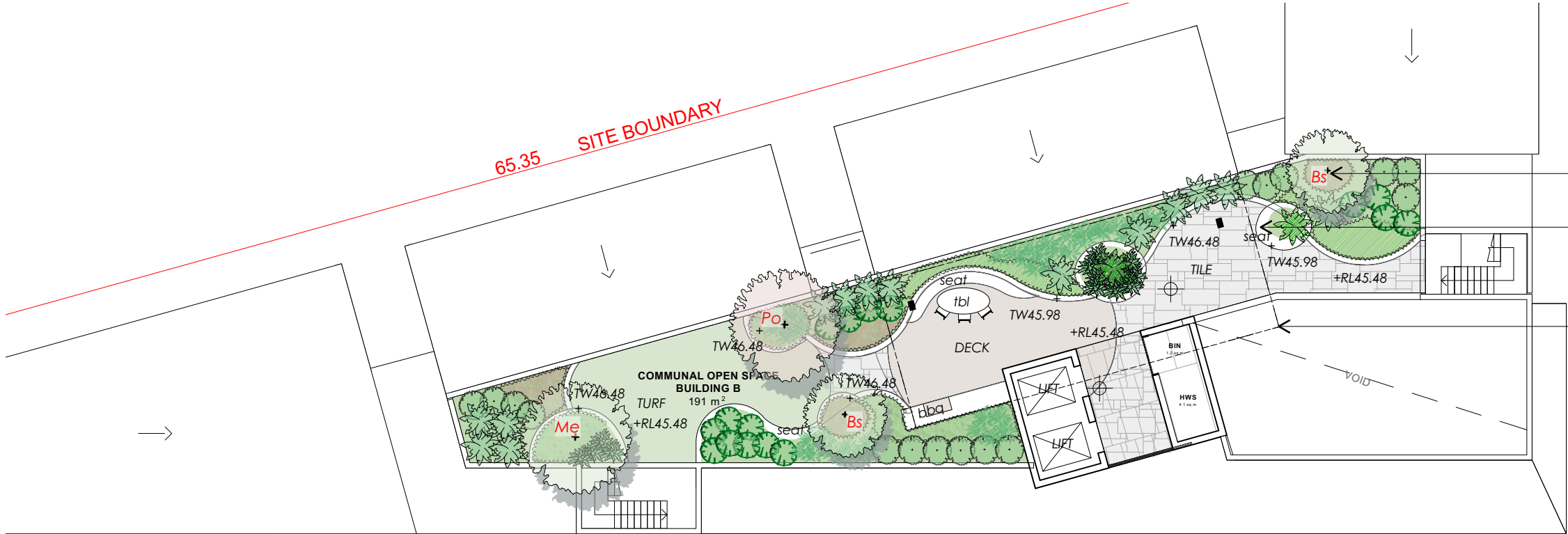


Curved concrete planters



LEGEND:



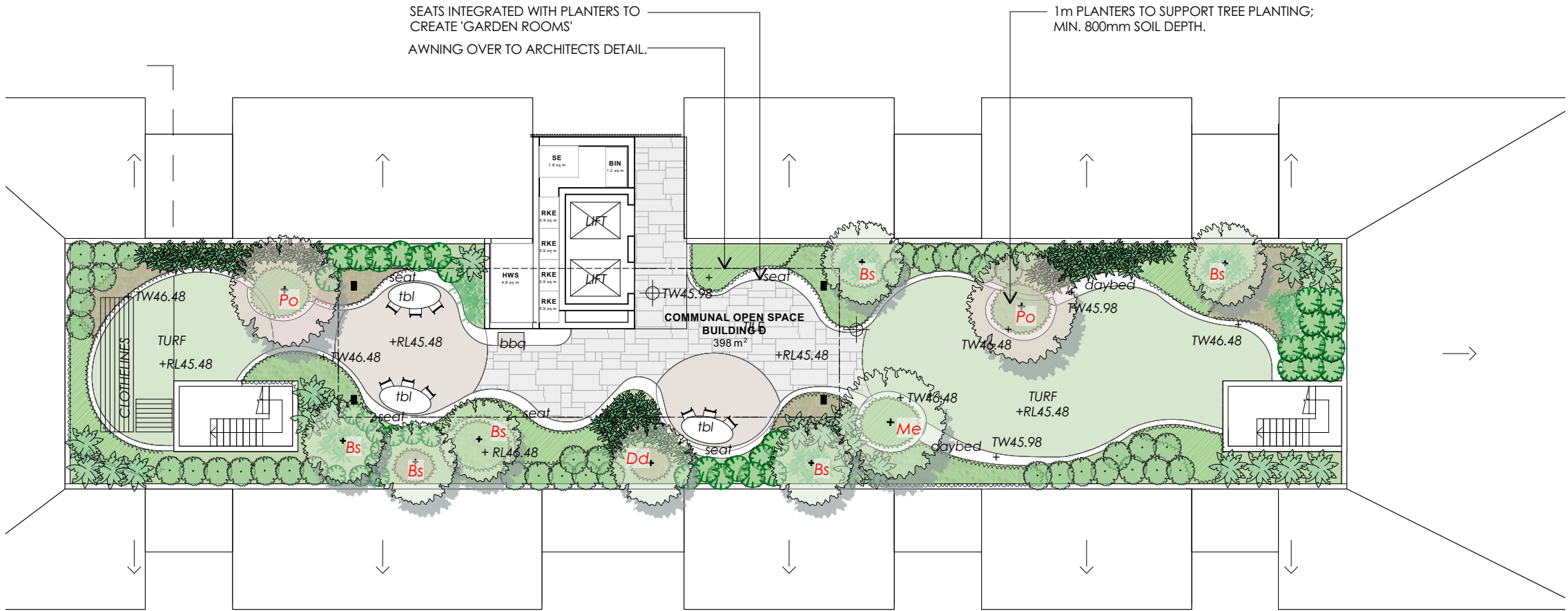


1m PLANTERS TO SUPPORT TREE PLANTING;
MIN. 800mm SOIL DEPTH.

SEATS INTEGRATED WITH PLANTERS TO
CREATE 'GARDEN ROOMS'

AWNING OVER TO ARCHITECTS DETAIL.

01 Building B Roof Terrace
Scale: 1:200



SEATS INTEGRATED WITH PLANTERS TO
CREATE 'GARDEN ROOMS'
AWNING OVER TO ARCHITECTS DETAIL.

1m PLANTERS TO SUPPORT TREE PLANTING;
MIN. 800mm SOIL DEPTH.

NOTES:
1. SOIL VOLUMES FOR ON PODIUM GARDENS TO BE
PROVIDED IN ACCORDANCE WITH NSW DPI APARTMENT
DESIGN GUIDE PART 4, TABLE 5.

2. INDICATIVE SOIL VOLUME/ DEPTH SUBJECT TO DETAIL
DESIGN AS FOLLOWS:
- SMALL TREES = 9m³ SOIL VOLUME PER TREE
- SHRUBS = min. 500mm DEPTH
- GROUNDCOVERS = min. 300mm DEPTH
- TURF = min. 200mm DEPTH

MIXED CANOPY OF SMALL TREES;
- Banksia serrata (Bs)
- Draceana draco (Dd)
- Metrosideros excelsa (Me)
- Plumeria obtusa (Po)

F	02.12.21	Update planters, DA issue
E	26.11.21	Update GF, awnings, balc planters, DA issue
D	02.11.21	Amend to comments, DA issue
C	09.12.20	Update to arch, Amend to comments, DA issue
B	22.05.20	Amend to comments, DA issue
A	21.05.20	Update to Arch, DA issue
01	23.02.20	Preliminary issue for coordination.
issue	date	description

project
**Railway Road
Meadowbank NSW**

client
Sasco Developments Pty Ltd

drawing title
Landscape Plan : Level 7 (south)

scale
1:200 @ A3

project no.
19836

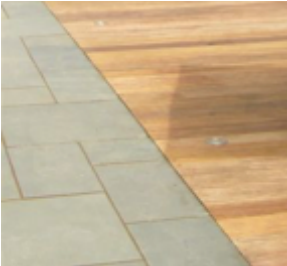
drawing no.
LP08

issue
F

DEVELOPMENT APPLICATION

notes: This drawing has been prepared for consideration and reference in the communication of conceptual ideas and is not intended as a detailed 'For Construction' document. No guarantee is given to the accuracy in location or size of existing or proposed elements, measurements or nominated or figured dimensions. Do not scale drawing. Drawing and content protected by copyright.

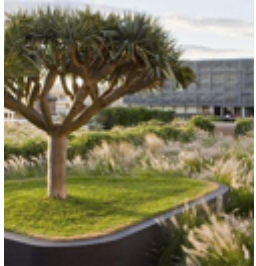
02 Building D Roof Terrace
Scale: 1:200



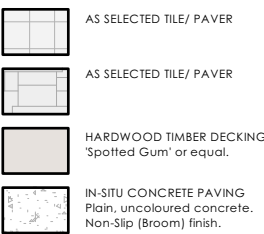
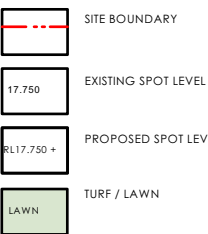
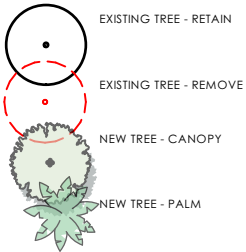
Flush deck inset to paving



Curved concrete planters



LEGEND:



INDICATIVE PLANT SCHEDULE: GROUND

Botanic Name	Common Name	Supply Size (mm/L)	Mature Height	Mature Spread	Location:
Trees					
Corymbia citriodora	Lemon-Scented Gum	150L	20m	8m	Constitution Road
Fraxinus griffithii	Evergreen Ash	150L	7m	4m	Railway Road
Magnolia 'Teddy Bear'	Teddy Bear Magnolia	150L	7m	4m	Underdale Lane
Tristaniopsis 'Luscious'	Luscious Water Gum	150L	7m	3m	Faraday Lane

INDICATIVE PLANT SCHEDULE: LEVEL 1

Botanic Name	Common Name	Supply Size (mm/L)	Mature Height	Mature Spread	Location:
Trees					
Acer 'Senkaki'	Coral Bark Maple	100L	3m	2m	Street entry accents
Elaeocarpus eumundii	Quondong	100L	8m	3m	
Syzygium 'Northern Select'	Northern Select Lily Pily	75L	7m	4m	
Palms / Ferns/ Cycads					
Archontophoenix alexandrae	Alexander Palm	3m stem	15m	3m	COS plaza
Cyathea cooperii	Coin Spot Tree Fern	2m stem	8m	3m	COS plaza
Livistona australis	Aust. Cabbage Tree	3m stem	20m	4m	COS plaza
Macrozamia communis	Burrawang	400mm	2m	2m	Accent
Rhapis excelsa	Broadleaf Lady Palm	400mm	3m	2m	COS plaza
Shrubs					
Alpinia nutens	False Cardemom	200mm	1m	1m	Accent
Alpinia zerumbet 'Variagata'	Variagated Shell Ginger	200mm	3m	1m	
Buxus sempervirens	Boxwood	200mm	1m	1m	
Calathea zebrina	Zebra Plant	200mm	1m	1m	
Cordyline fruticosa 'Rubra'	Red Ti Plant	200mm	2m	1m	
Doryanthes excelsa	GyMEA Lily	45L	1.2m	1.2m	
Philodendron 'Xanadu'	Xanadu Philodendron	200mm	1m	1m	
Rhaphiolepis 'Snow Maiden'	Snow Maiden Hawthorn	200mm	0.8m	0.8m	
Syzygium 'Aussie Boomer'	Aussie Boomer Lily Pily	45L	1.5m	1.5m	
Groundcovers / Climbers / Aquatics					
Asplenium nidum	Birds Nest Fern	200mm	1m	1m	Accent
Aspidistra elatior	Cast Iron Plant	200mm	1m	1m	
Brachyscome multifida	Break-O-Day	200mm	0.2m	0.5m	
Cissus antarctica	Water Vine	200mm	-	2	
Crinum pedunculatum	Swamp Lily	140mm	1	1	
Dianella caerulea	Flax Lily	140mm	0.7m	0.7m	
Hardenbergia violacea	Native Sarsparilla	140mm	-	1m	
Hibbertia scandens	Snake Vine	140mm	-	1m	
Liriope muscarii	Lily Turf	140mm	0.4m	0.4m	
Lomandra 'Tanika'	Tanika Mat Rush	140mm	0.9m	0.9m	
Sansevieria trifasciata	Mother-In-Laws Tongue	200mm	1m	0.4m	Accent
Trachelospermum 'Tricolor'	Tricolor Jasmine	140mm	0.3m	1m	

INDICATIVE PLANT SCHEDULE: LEVEL 2 - 6

Botanic Name	Common Name	Supply Size (mm/L)	Mature Height	Mature Spread	Location:
Shrubs					
Alpinia nutens	False Cardemom	200mm	1m	1m	L5 Balconies
Buxus sempervirens	Boxwood	200mm	1m	1m	
Grevillea buxifolia	Grey Spider Flower	200mm	1.5m	1m	
Philodendron 'Xanadu'	Xanadu Philodendron	200mm	1m	1m	
Rhaphiolepis 'Snow Maiden'	Snow Maiden Hawthorn	200mm	0.8m	0.8m	
Syzygium 'Aussie Boomer'	Aussie Boomer Lily Pily	45L	1.5m	1.5m	L5 Balconies
Westringia fruticosa 'Zena'	Zena Coast Rosemary	200mm	1m	1m	L5 Balconies
Groundcovers / Climbers / Aquatics					
Aspidistra elatior	Cast Iron Plant	200mm	1m	1m	Cascading
Brachyscome multifida	Break-O-Day	200mm	0.2m	0.5m	
Cissus antarctica	Water Vine	200mm	-	2	
Dichondra 'Silver Falls'	Silver Falls Kidney Weed	140mm	-	1m	
Hardenbergia violacea	Native Sarsparilla	140mm	-	1m	
Hibbertia scandens	Snake Vine	140mm	-	1m	Cascading
Juniperus conferta	Shore Juniper	200mm	0.2m	1m	
Lomandra 'Lime Tuff'	Lime Tuff Mat Rush	140mm	0.5m	0.5m	
Myoporum parvifolium	Creeping Boobialla	140mm	0.3m	1m	
Pennisetum 'Nafray'	Nafray Foxtail Grass	140mm	0.7m	0.7m	
Sansevieria trifasciata	Mother-In-Laws Tongue	200mm	1m	0.4m	
Sedum 'Blue Spruce'	Blue Spruce	140mm	0.3m	1m	
Trachelospermum 'Tricolor'	Tricolor Jasmine	140mm	0.3m	1m	

INDICATIVE PLANT SCHEDULE: ROOF GARDENS

Botanic Name	Common Name	Supply Size (mm/L)	Mature Height	Mature Spread	Location:
Trees					
Banksia serrata	Old Man Banksia	100L	5m	2m	Accent
Draceana draco	Dragon Blood Tree	2m stem	3m	3m	
Metrosideros excelsa	NZ Christmas Bush	75L	5m	3m	
Plumeria obtusa	Frangipani	75L	5m	3m	
Syzygium 'Northern Select'	Northern Select Lily Pily	75L	5m	1.5m	
Palms / Ferns/ Cycads					
Macrozamia communis	Burrawang	400mm	2m	2m	Accent
Rhapis excelsa	Broadleaf Lady Palm	400mm	3m	2m	
Shrubs					
Doryanthes excelsa	Gynea Lily	45L	1.2m	1.2m	Accent
Gaura lindheimeri	Butterfly Bush	200mm	1m	1m	
Philodendron 'Xanadu'	Xanadu Philodendron	200mm	1m	1m	
Rhaphiolepis 'Apple Blossom'	Snow Maiden Hawthorn	200mm	0.8m	0.8m	
Syzygium 'Aussie Boomer'	Aussie Boomer Lily Pily	45L	1.5m	1.5m	
Westringia fruticosa 'Zena'	Zena Coast Rosemary	200mm	1m	1m	
Groundcovers / Climbers / Aquatics					
Brachyscome multifida	Break-O-Day	200mm	0.2m	0.5m	
Cissus antarctica	Water Vine	200mm	-	2	
Dianella caerulea	Flax Lily	140mm	0.7m	0.7m	
Hardenbergia violacea	Native Sarsparilla	140mm	-	1m	
Lomandra 'Lime Tuff'	Lime Tuff Mat Rush	140mm	0.5m	0.5m	
Pennisetum 'Nafray'	Nafray Foxtail Grass	140mm	0.7m	0.7m	
Sansevieria trifasciata	Mother-In-Laws Tongue	200mm	1m	0.4m	
Trachelospermum 'Tricolor'	Tricolor Jasmine	140mm	0.3m	1m	

F	02.12.21	Update planters, DA issue
E	26.11.21	Update GF, awnings, balc planters, DA issue
D	02.11.21	Amend to comments, DA issue
C	09.12.20	Update to arch, Amend to comments, DA issue
B	22.05.20	Amend to comments, DA issue
A	21.05.20	Update to Arch, DA issue
01	23.02.20	Preliminary issue for coordination.
issue	date	description

project

Railway Road Meadowbank NSW

client

Sasco Developments Pty Ltd

drawing title

Schedule

scale

1:1 @ A3

project no.

19836

drawing no.

LP08

issue

F

DEVELOPMENT APPLICATION

notes: This drawing has been prepared for consideration and reference in the communication of conceptual ideas and is not intended as a detailed 'For Construction' document . No guarantee is given to the accuracy in location or size of existing or proposed elements, measurements or nominated or figured dimensions. Do not scale drawing. Drawing and content protected by copyright.



F	02.12.21	Update planters, DA issue
E	26.11.21	Update GF, awnings, balc planters, DA issue
D	02.11.21	Amend to comments, DA issue
C	09.12.20	Update to arch. Amend to comments, DA issue
B	22.05.20	Amend to comments, DA issue
A	21.05.20	Update to Arch. DA issue
01	23.02.20	Preliminary issue for coordination.
issue	date	description

project

**Railway Road
Meadowbank NSW**

client

Sasco Developments Pty Ltd

drawing title

Paradigm Imagery

scale	project no.	drawing no.	issue
1:1 @ A3	19836	LP10	F

DEVELOPMENT APPLICATION

notes: This drawing has been prepared for consideration and reference in the communication of conceptual ideas and is not intended as a detailed 'For Construction' document . No guarantee is given to the accuracy in location or size of existing or proposed elements, measurements or nominated or figured dimensions. Do not scale drawing. Drawing and content protected by copyright.



- NOTES:
1. SOIL VOLUMES FOR ON PODIUM GARDENS TO BE PROVIDED IN ACCORDANCE WITH NSWDPIC APARTMENT DESIGN GUIDE PART 4, TABLE 5.
 2. INDICATIVE SOIL VOLUME/ DEPTH SUBJECT TO DETAIL DESIGN AS FOLLOWS:
 - SMALL TREES = 9m3 SOIL VOLUME PER TREE
 - PALMS = min. 3m3 SOIL VOLUME PER TREE
 - SHRUBS = min. 500mm DEPTH
 - GROUNDCOVERS = min. 300mm DEPTH
 - TURF = min. 200mm DEPTH
 3. TOTAL SITE AREA = 7,772m2

KEY:

GARDEN AREA
Soil depth min. 500mm

D:1m

1m DEEP SOIL AREA.
Total area : 544m2
7% of Site Area

- 1m HIGH PLANTER TO PARAPET.
MINIMUM SOIL DEPTH 600mm.
- 1m HIGH GRC PLANTERS TO PROVIDE 1m
DEEP SOIL TO TREE PLANTINGS.
- 1m DEEP SOIL TO SUPPORT TREE PLANTINGS.

C	12.01.22	Update Faraday Lane planters. DA Issue
B	02.12.21	Update planters. DA Issue
A	02.11.21	Amend to comments. DA Issue
01	01.11.21	Preliminary issue for review.
issue	date	description

project
**Railway Road
Meadowbank NSW**

client
Sasco Developments Pty Ltd

drawing title
Levels Plan : Level 1 (north)

scale
1:250 @ A3

project no.
19836

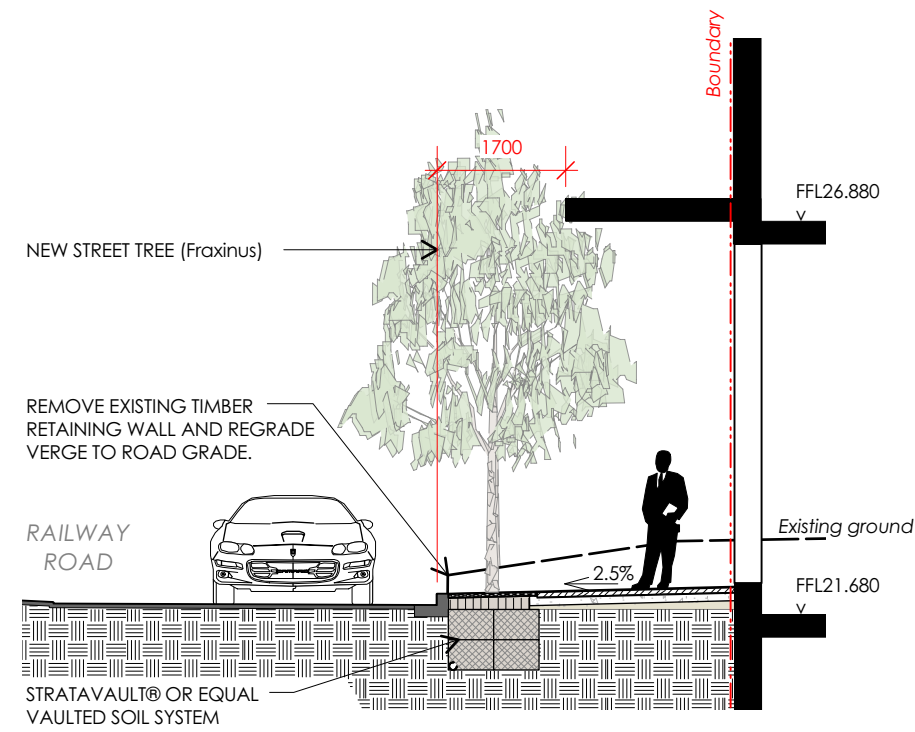
drawing no.
LP11

issue
C

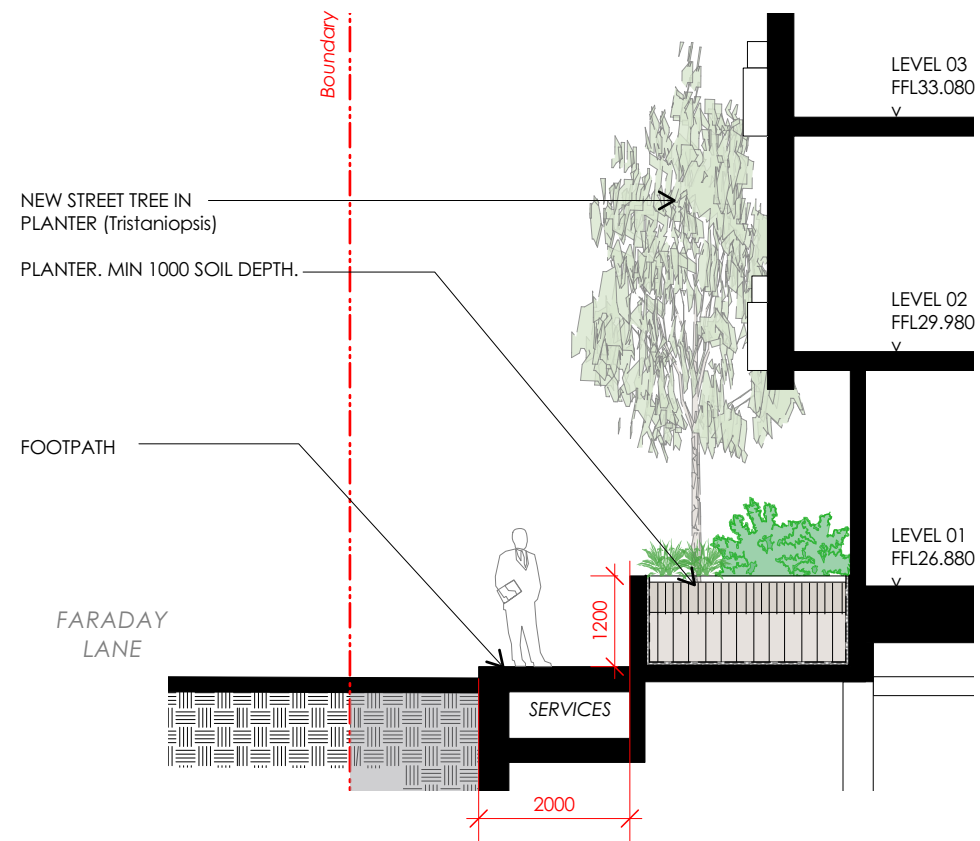
DEVELOPMENT APPLICATION

notes: This drawing has been prepared for consideration and reference in the communication of conceptual ideas and is not intended as a detailed 'For Construction' document. No guarantee is given to the accuracy in location or size of existing or proposed elements, measurements or nominated or figured dimensions. Do not scale drawing. Drawing and content protected by copyright.

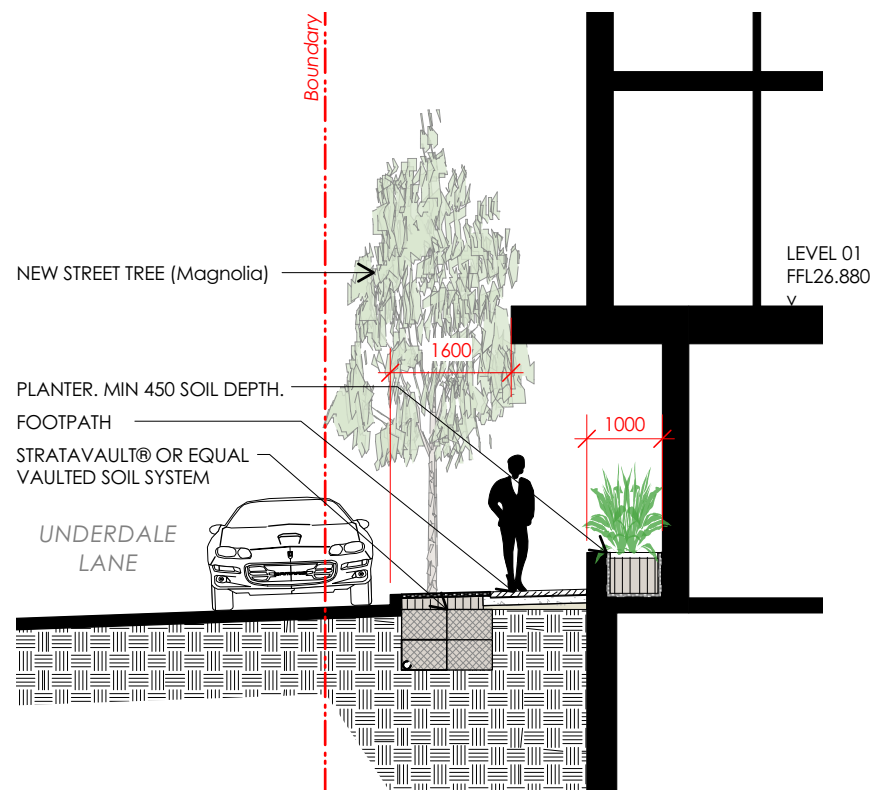




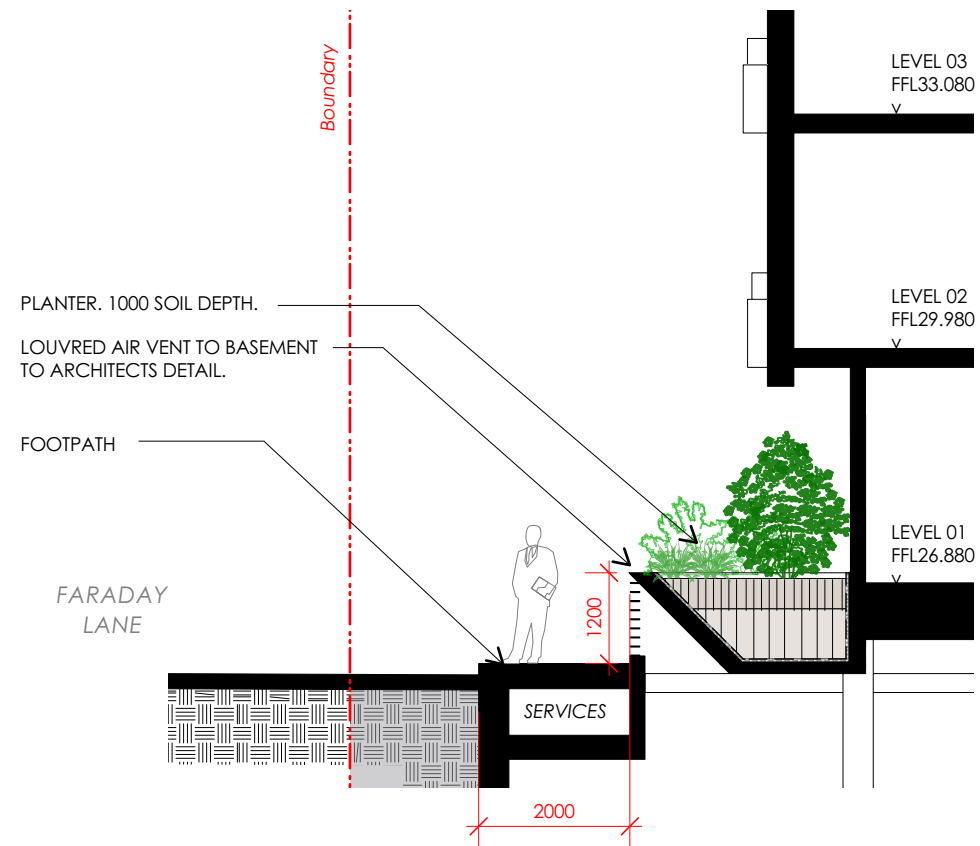
01 Section A : Railway Rd (south)
Scale: 1:100



03 Section C : Faraday Lane
Scale: 1:100



02 Section B : Underdale Lane
Scale: 1:100



04 Section D : Faraday Lane At Basement Vents
Scale: 1:100

B	23.11.21	Update awnings, DA issue
A	02.11.21	Amend to comments, DA issue
01	01.11.21	Preliminary issue for review.
issue	date	description

project
**Railway Road
Meadowbank NSW**

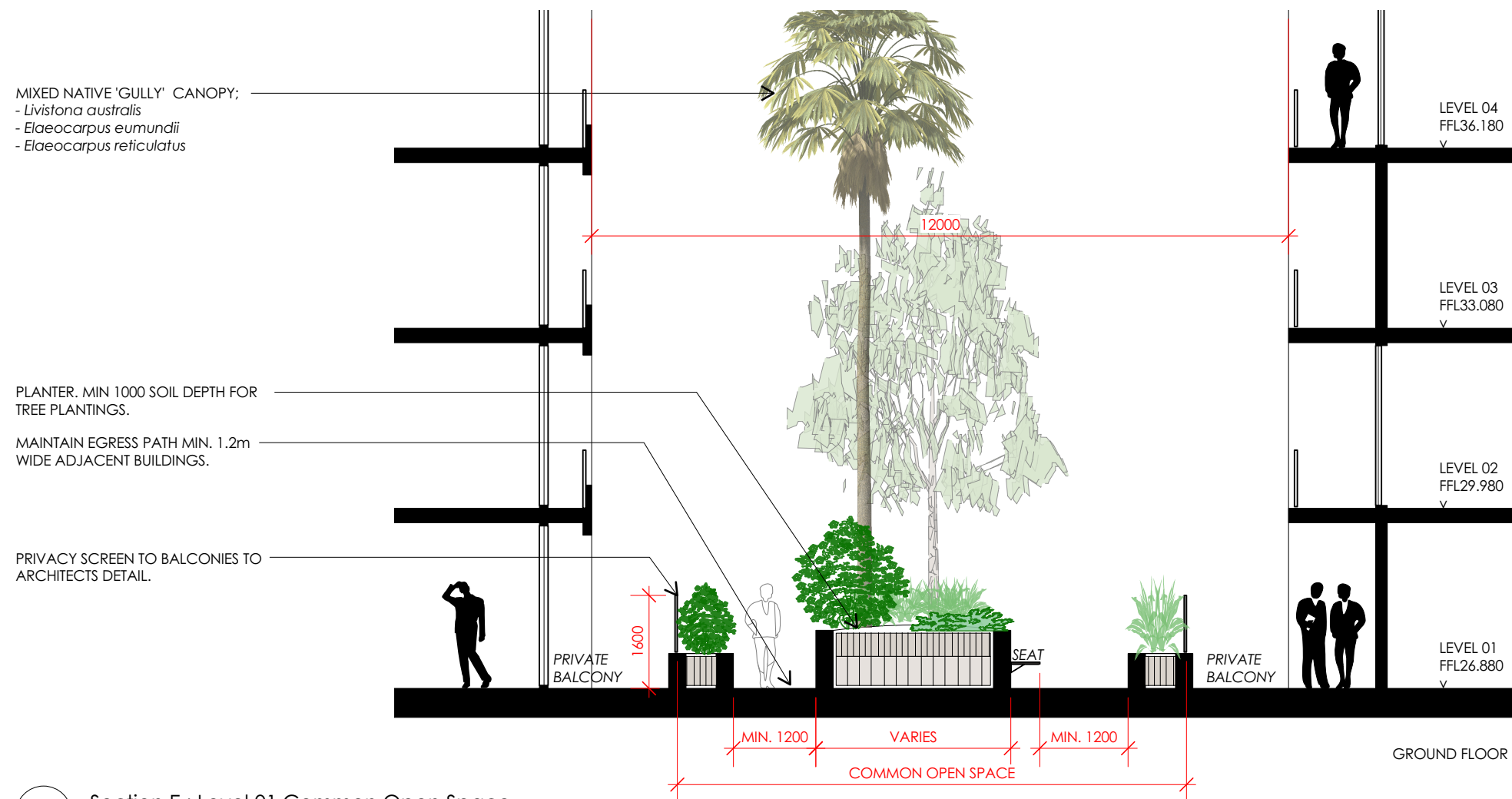
client
Sasco Developments Pty Ltd

drawing title
Landscape Sections 01

scale	project no.	drawing no.	issue
1:100 @ A3	19836	LP13	B

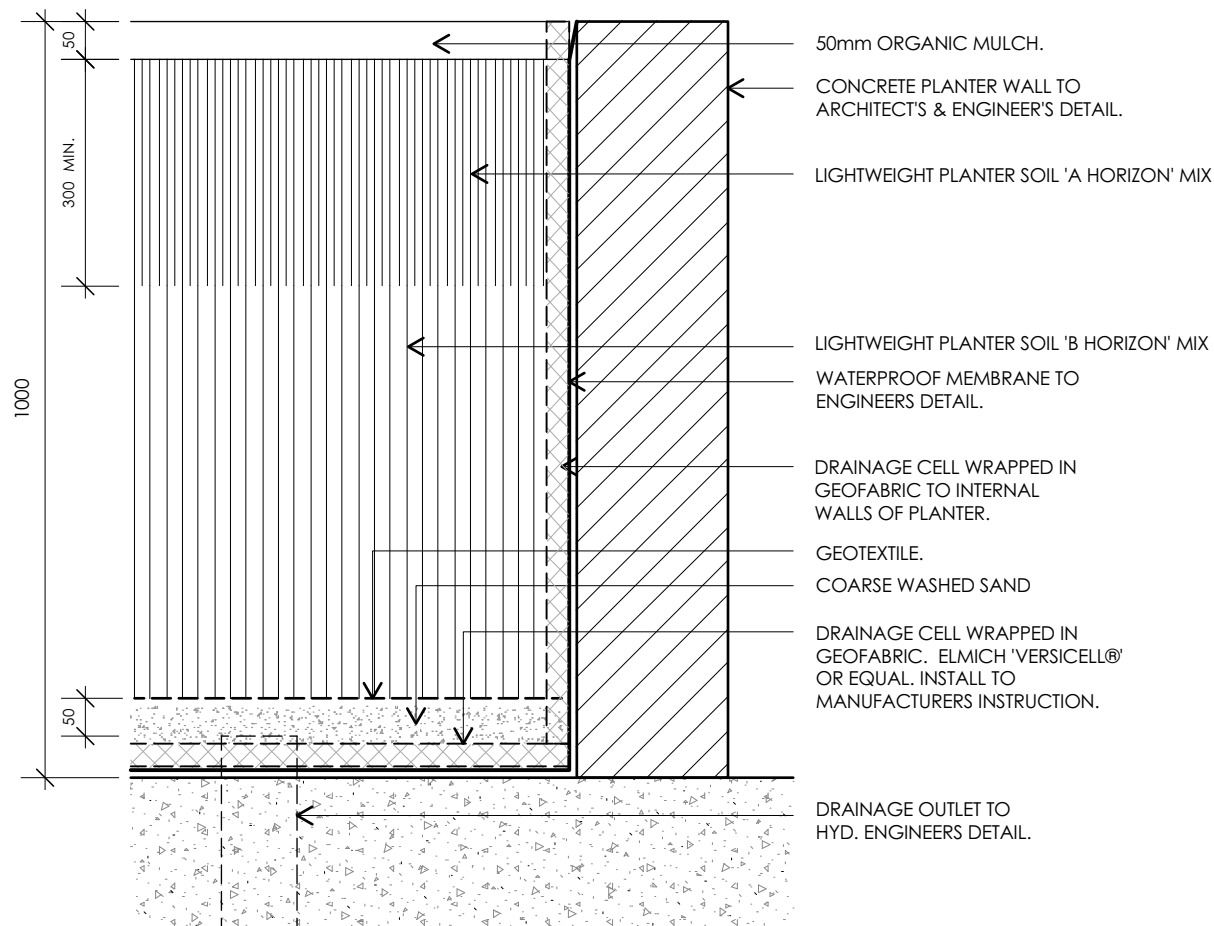
DEVELOPMENT APPLICATION

notes: This drawing has been prepared for consideration and reference in the communication of conceptual ideas and is not intended as a detailed 'For Construction' document. No guarantee is given to the accuracy in location or size of existing or proposed elements, measurements or nominated or figured dimensions. Do not scale drawing. Drawing and content protected by copyright.



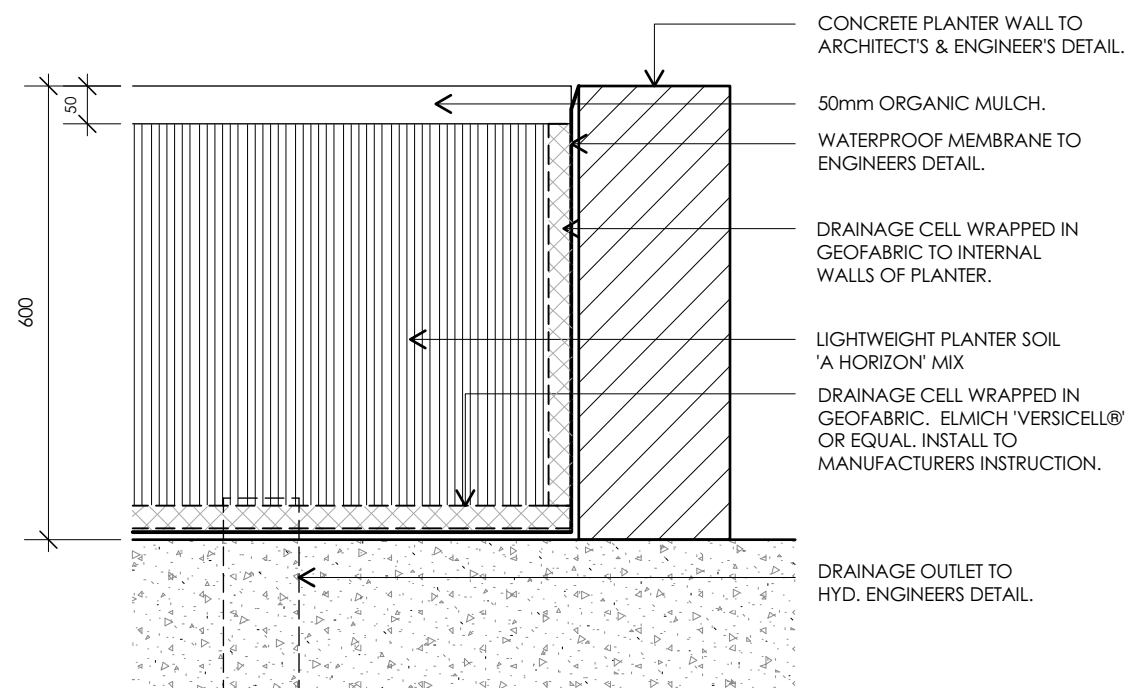
05 Section E : Level 01 Common Open Space

Scale: 1:100



06 Detail : Planter on Slab 1m Deep (Typical)

Scale: 1:10



07 Detail : Planter on Slab 0.6m Deep (Typical)

Scale: 1:10

A	02.11.21	Amend to comments, DA issue
01	01.11.21	Preliminary issue for review.
issue	date	description

project

**Railway Road
Meadowbank NSW**

client

Sasco Developments Pty Ltd

drawing title

Landscape Sections 02

scale

As Shown @ A3 19836

project no.

drawing no.

issue

LP14

A

DEVELOPMENT APPLICATION

notes: This drawing has been prepared for consideration and reference in the communication of conceptual ideas and is not intended as a detailed 'For Construction' document. No guarantee is given to the accuracy in location or size of existing or proposed elements, measurements or nominated or figured dimensions. Do not scale drawing. Drawing and content protected by copyright.