



ENVIRONMENT & SUSTAINABILITY Achievements

© City of Ryde



2017 Environment and Sustainability Achievements

The Environment and Sustainability Snapshot is an update to our community and stakeholders on projects and works delivered by the Environment Unit at City of Ryde Council. Programs and works are delivered as part of suite of various outcome areas as guided by Council's Community Strategic Plan 2025. Ongoing delivery of future environment improvement works will continue to be guided by the Plan and assisted through the Bushland and Environment Advisory Committee and the Renewable Energy Advisory Committees.

These are some of the highlights of the many projects that have been delivered this year.

WATERWAYS



GET THE
SITE RIGHT
CAMPAIGN

The Get the Site Right initiative is a joint educational and regulatory campaign with our 10 partnership councils in the Parramatta River Catchment Group. The building site sedimentation compliance blitz aims to protect our waterways from sediments such as sand, soil and mud. These sediments can run off building sites and into stormwater drains and into Parramatta River if controls aren't put in place.



**Council Officers
Inspected
over 58 sites
issuing fines for site
breaches resulting in
improved compliance.**



PARRAMATTA
RIVER
CATCHMENT
GROUP/
'SWIMMABLE
2025
CAMPAIGN'

I'M READY
ARE YOU?



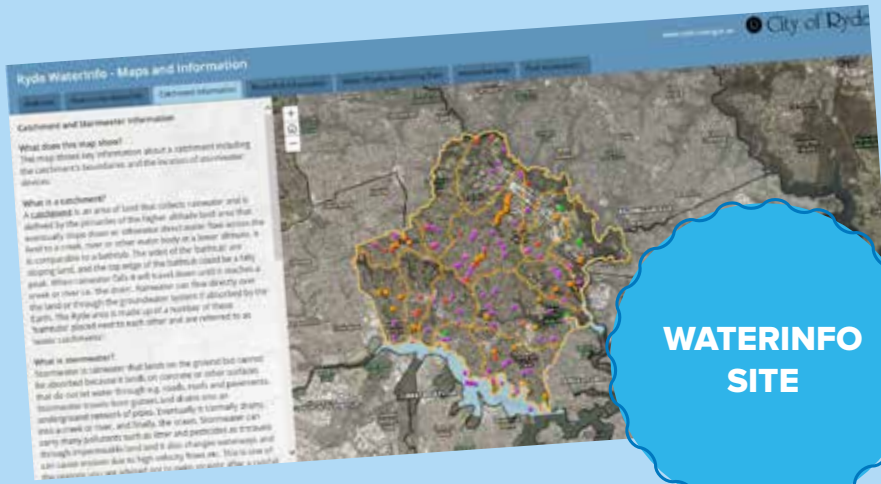
HELP MAKE OUR RIVER SWIMMABLE AGAIN.
ourlivingriver.com.au

City of Ryde is an active partner in the Parramatta River Catchment Group, an alliance of councils and government agencies and community groups working to make the Parramatta River Swimmable again by 2025.

In 2017 the PRCG established pathways to make the river swimmable again through the development of a Parramatta River Masterplan. Ryde is investigating Putney, Kissing Point and Meadowbank Park as possible swimming activation sites for the campaign.

Water quality monitoring is carried out by the City of Ryde in its 5 major Creeks; Terrys, Archers, Buffalo, Shrimptons and Porters, to inform environmental management and development decisions impacting on or relating to our waterways.

WATER QUALITY MONITORING



WATERINFO SITE

Council developed an interactive online map on the City of Ryde website, that school children and residents can use to access information about water quality for Terry's, Shrimptons, Archers, Porters and Buffalo Creeks. It also plots historical water data and provides location based information about riparian corridors, stormwater devices and other catchment information.



WATER QUALITY AND RIPARIAN IMPROVEMENT PROGRAM



Creek works were undertaken at Terry's Creek and Jim Walsh Park to stabilise and protect riparian areas.

A Creek tributary restoration project was completed at Jim Walsh Park to restore water conveyance and improve water quality.

Council also delivered a multi-staged Stormwater Harvesting and gross pollutant project at Bill Mitchell Park, Gladesville to treat and utilise for irrigation Bill Mitchell Park.

Council also actively maintains bio-retention systems at Looking Glass Bay and Meadowbank Park, including an active wetland on Buffalo Creek.

BIODIVERSITY

The Ryde Biodiversity Plan was adopted by Council in December 2016. This 10 year plan to protect and enhance our natural areas includes actions to manage and protect native vegetation, restore waterways and surrounds, link landscaping, promote biodiversity and community interaction with protection of the environment.

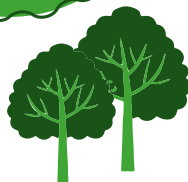
RYDE BIODIVERSITY PLAN 2016



BUSHLAND AND ENVIRONMENT ADVISORY COMMITTEE

The Bushland and Environment Advisory Committee assists in contributing to advise Council on Bushland, Environment and Sustainability issues and initiatives within the City. This group meets quarterly and consists of community representatives from environmental groups, educational institutions, bushcare groups and general community members. This group was integral in assisting Council to guide the Ryde Biodiversity Plan in 2016/2017.

FLORA AND FAUNA SURVEYS



In 2017

Council surveyed 26 key bushland parks and reserves

These surveys conducted in autumn and spring provided data which indicated a number of surveyed parks had an increase in diversity of fauna species and presence of threatened species.

Under the bushcare program training and education programs are provided to bushcare volunteers to help them improve their knowledge and skills. Popular workshops this year included 'An introduction to Bushcare', 'First Aid' and 'Plant Identification'.

Council manages
27 bushcare groups
which this year provided
over 4,000 hours
of volunteer bush regeneration.



BUSHCARE





155 Community members attended Ryde's 'National Tree Day' event at Field of Mars in July 2017.

700 trees and shrubs were planted.

Our local schools also joined in the fun with 42 High school students planted over 400 seedlings for a habitat corridor for local fauna in Buffalo Creek.



WORLD ENVIRONMENT DAY 2017

City of Ryde celebrated the annual World Environment Day in June with the community at a fun family event held at Field of Mars Reserve. Featuring animal displays, a recycling relay, guided walks, biodiversity and environmental displays and a BBQ.



BIODIVERSITY... continued

The walking trail upgrade seeks to formalise parts of the existing Terrys Creek Walking Trail connecting a number of bushland reserves from Forrester Park to the Lane Cove National Park.

The project is to be delivered over the next 3 years and is a key recreational corridor identified in the Draft North District Plan for Sydney and Green Grid Plan. Works will improve access and connections whilst protecting the environmental values of this bushland corridor along the creekline.

TERRYS CREEK WALKING TRAIL UPGRADE



BUSHFIRE MAPPING

Council, working with the Rural Fire Service, has reviewed to update our existing bushfire maps to assist with community protection, planning and aligning with legislative requirements for development.

The new mapping provides 3 nominated categorisations for management and for planning.

In 2017 we actively managed over 4,000 lineal metres of natural areas for asset protection to protect our community and minimise impacts of any fire threat.

SUSTAINABLE TRANSPORT

PEDESTRIAN ACCESSIBILITY AND MOBILITY PLANS (PAMP)



In 2017, Council completed two more strategic PAMP studies for the West Ryde and Meadowbank West town centre areas. To date, Council has completed a total of six town centre studies for pedestrian accessibility and mobility. These studies provide recommendations for capital works projects to improve pedestrian safety. Several connections across Top Ryde Town Centre were completed providing 160mtrs of footpath to link to Lane Cove Road along with several kerb ramps improving connection in Gladesville, Macquarie Park and Eastwood.

SUSTAINABLE TRANSPORT... continued

ON-STREET CARSHARE TRIAL

An on-street carshare trial commenced in Macquarie Park as part of a broader short term parking trial. Success of this will assist to expand carsharing opportunities within our city for community.

SHOP RYDER BUS

The Shop Ryder is a free community bus service for short passenger trips linking our key town centres in Ryde.



In 2016/17
46,981
passenger trips
were taken has
conservatively avoided over
10,000 single passenger car
movements within Ryde.

EVENTS



Council partnered with Connect Macquarie Park to celebrate Ride to Work Day. This annual event is aimed at promoting the benefits of riding to work. Events were held at Macquarie University, Optus and Trinity.

We participated in the Sydney Cycle Challenge and hosted corporate cycling workshops to encourage our business community to consider sustainable transport for their journeys to and from work.

ENVIRONMENTAL REPORTING AND UPGRADES PROGRAM

ENERGY EFFICIENCY PROJECTS



This year we completed a number of lighting upgrades, including the installation of energy efficient LEDs at RALC, Peel Park, Ryde Park Amenity Building and also LED multifunction light poles near Macquarie Park and University Station/ Tucker and Church St Ryde.

Solar Hot Water systems at RALC were installed.

Design work for the installation of a 305kw Solar Harvesting System (over 800 solar panels) for the RALC was completed this year. Installation will take place next year. This system is expected to save over 300 tCO₂e per annum the reducing energy reliance for the site further and serving 70% of energy needs.

A 32.5 kW / 126 solar panel energy system was installed on the roof of North Ryde Library. The system will reduce greenhouse gas emissions by approximately 41 tCO₂e per annum.

WATER EFFICIENCY PROJECTS

The Sustainability Team worked with our Operations, Sportsfield and Passive Parks Departments to find efficiencies in our practices and infrastructure towards reducing our consumption at our parks and sports fields.

Measures undertaken in include irrigation management software at 3 parks and additional water metering to enable quicker response time to leaks.

Sub-metering at the RALC was also installed to reduce water consumption.



ENVIRONMENTAL EDUCATION



Wild Edibles Workshop
with Diego Bonetto
(Image by Sreshan Kander)



COMMUNITY ENVIRONMENTAL EDUCATION PROGRAM



We held a number of community sustainability workshops including two very popular Solar solutions and Solar battery workshops which were attended by over 250 community members to learn about the benefits of solar and sustainable living. We partnered with Macquarie University and radio station 2SER to host a series of Sustainability Talks featuring high profile speakers engaging in positive, future focussed discussion on some of the biggest sustainable development issues facing Sydney.

Other community workshops held in 2017 included a sustainable retrofit workshop, upcycling furniture repair workshops, native bee keeping and an environmental documentary screening on waste.

We launched our first online environment and sustainability e-newsletter 'Smarter, Cleaner, Greener' for community to learn tips to become more sustainable, have access to upcoming events and what's on in our city. The publication continues to grow rapidly in popularity.

The free home advisory service helps householders identify ways in which the householder can reduce their costs of living towards improved sustainable living, efficient use of household resources and improved domestic waste management behaviour. Now in its 5th year, this service continues to grow in popularity. 145 assessments were delivered to community in 2016/2017 an increase of 45 percent in signups since the previous year. Evaluations found that ninety-five percent of all participants are implementing most or some of the recommendations made during the home assessment.



HOME WASTE AND SUSTAINABILITY ADVISORY SERVICE



In 2016/2017

145 assessments delivered to community

ENVIRONMENTAL EDUCATION ... continued

CORPORATE ENVIRONMENTAL EDUCATION PROGRAM



In addition to community workshops Council also ran environmental education programs for staff and business community of Ryde.

This year 200 staff took part in a webinar to engage our corporate community in changing energy, water and waste behaviours at home and in the office.

RYDE ENVIRONMENTAL EDUCATORS NETWORK



Ryde Environmental Educators Network (REEN) was set up in 2007 by the City of Ryde to provide schools and their teachers with learning opportunities, tools, resources, ideas and support to embed sustainability across the school curriculum. 17 educational institutes were represented at REEN in 2017. This network is free to join and attend to all teachers within the Ryde LGA. Guest speaker's present ideas on integrating sustainability into lesson plans at term meetings held throughout the year and local teachers can share ideas with each other through round table discussions.

Council, through facilitation of our REEN meetings are now endorsed by the NSW Education Standards Authority as an accredited provider of professional development for teachers for career development.



ENVIRONMENTAL EDUCATION ... continued



A total of
167 works
were submitted
in the 2016/17 event with
79 artworks
selected for the exhibition.

**SUSTAINABLE
WASTE 2
ART PRIZE**



Council's annual Sustainable Waste 2 Art Prize is now in its 5th year. Artists, designers and members of the community were invited to enter the competition which requires entrants to produce art or design objects from reclaimed materials. Approximately 200 people attended the opening night in September. Popularity continues to grow for this Prize annually.

**100
RESILIENT
CITIES
PROGRAM**

RESILIENCE PLANNING

Funded by the Rockefeller Foundation, the 100 Resilient Cities is a global initiative with 100 cities around the world to identify and address the top shocks and stresses in our city impacting our environment and community into the future. The program focuses on impacts from globalisation, urbanisation and impacts from climate change. Ryde is an ambassador Council under the program working with Councils across Sydney to work on strategies to build resilience into our communities for the future.



