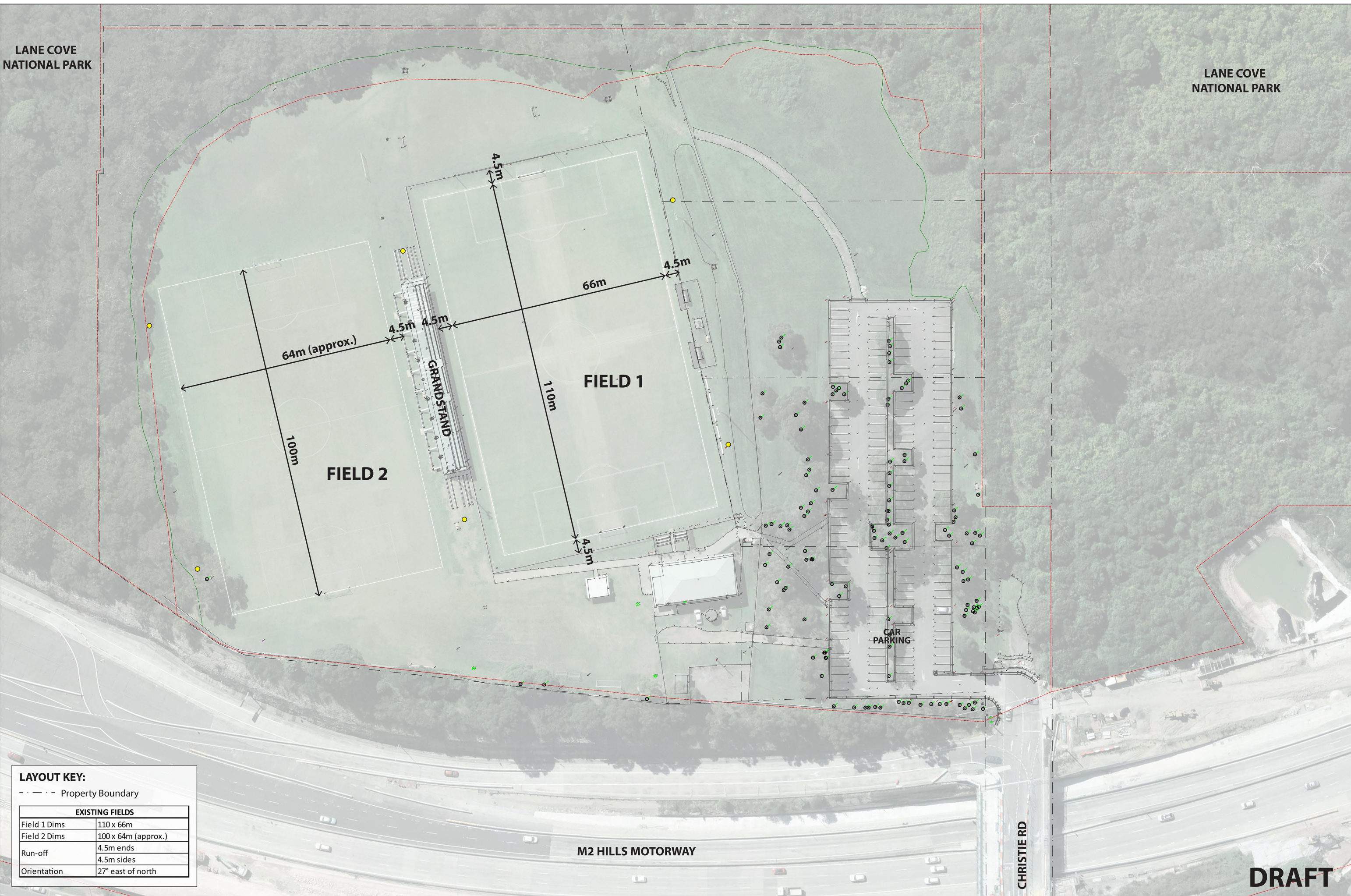


LANE COVE
NATIONAL PARK

LANE COVE
NATIONAL PARK



LAYOUT KEY:
- - - - Property Boundary

EXISTING FIELDS	
Field 1 Dims	110 x 66m
Field 2 Dims	100 x 64m (approx.)
Run-off	4.5m ends
	4.5m sides
Orientation	27° east of north

EXISTING LAYOUT
CHRISTIE PARK - FUTURE FACILITY MASTER PLAN

CITY OF RYDE

DATE: 02/03/16

ISSUE: FOR DISCUSSION

SCALE: 1:500@ A1

