

OLYMPIC PARK DRAFT MASTERPLAN AND DRAFT TRAFFIC AND PARKING STUDY

 City of Ryde

Stage 2 Community Consultation
11 November – 9 December 2020



THE SITE

Olympic Park is located at 504 Victoria Road, Ryde and currently includes:

- Ryde Aquatic Leisure Centre
- Tennis courts
- Green space with playground and dog off leash area
- Car park
- Next Gen Health Club



BACKGROUND

While the Olympic Park site and Ryde Aquatic Leisure Centre has served the community well for many years, Council recognises that, within the context of a rapidly growing and changing area, the roles and functions of our parks and recreation facilities need to be constantly reviewed.

In late 2017 the City of Ryde asked for community input to create a vision for the future of Olympic Park and the Ryde Aquatic Leisure Centre precinct.

Based on this community feedback Council has prepared a draft Masterplan for Olympic Park and obtained a Parking and Traffic Study Report. These are now available for community feedback.

The draft Masterplan proposes significant improvements to onsite parking to better meet current and future demand. Within the Ryde Aquatic Leisure Centre, the draft Masterplan also includes a new program/learn to swim pool, interactive splash pad, two additional indoor sports courts, new café, indoor and outdoor seating areas, new toilet/change facilities, children's party area and new lobby/reception area with improved accessibility.

COMMUNITY FEEDBACK

In late 2017 Council conducted community consultation asking the community for suggestions and feedback to create a vision for the future of Olympic Park site. These suggestions and feedback were used to inform the draft Masterplan design.

Feedback received

Draft Masterplan response

Preferred mode of transport is private vehicle. Traffic congestion and parking are very problematic and there is a strong support for additional parking on the site

The draft Masterplan includes a significant increase in on-site parking. Refer to the following Parking and Traffic slide.

Poor experiences with excessive traffic and overflow parking impacting their properties.

The profile of the site is considered poor, with poor access and interconnectedness of facilities. The interior layout of the aquatic centre is considered good

The draft Masterplan includes improved access and interconnectedness

Heavily utilised site by families where main activities are taking children to the pool, squad and recreational swimming

The draft Masterplan includes an additional 25m program/ learn to swim pool and new toilet/change room facilities to better meet demand

COMMUNITY FEEDBACK

Feedback received

Draft Masterplan response

The café could be relocated to increase revenue and to provide learn to swim staff with an office space in a good location. Staff facilities could use some improvements

The draft Masterplan includes a new café and office/staff facilities

Natural areas are highly regarded by users and adjacent residents. The playground is run down and hidden from the rest of the site

The draft Masterplan includes the retention of green spaces and the playground identified for a future upgrade

The tennis courts are considered to be under utilised with opportunity to improve this. The indoor courts are heavily used with high demand. There is scope to expand to address the demand

The draft Masterplan includes two additional indoor sports courts to better meet demand

The aquatic centre is the biggest energy consumer of all Council facilities. There is a strong push to reduce this. Consideration is requested to reducing operational costs of energy and water consumption

Council has and will continue to use energy and water efficient features such as solar panels, and energy-efficient LED lights

PARKING AND TRAFFIC STUDY

Community feedback was received specifically relating to parking and traffic at Olympic Park.

In response Council engaged a traffic consultant (Stanbury Traffic Planning) to review the draft Masterplan and prepare a draft Parking and Traffic Study.

The draft Parking and Traffic Study reviewed the existing and future parking and traffic impacts at Olympic Park and the draft Masterplan.

Whilst the draft Masterplan represents a significant improvement over the existing conditions, the Study provided a range of recommendations and considerations to greatly improve the existing conditions, further reduce the reliance on on-street parking and significantly improve the traffic flow conditions within the surrounding local road network.

The draft Parking and Traffic Study and an Overview and Summary of the draft Parking and Traffic Study are on Council's website for you to view:

www.ryde.nsw.gov.au/haveyoursay/OlympicPark

THE DRAFT MASTERPLAN

Council engaged an architect (Michael Davies Architecture) to prepare a draft Masterplan and images to show what the site could look like.

Aerial view of Olympic Park
(images may be subject to change)



THE DRAFT MASTERPLAN

New entry foyer and plaza
(images may be subject to change)



THE DRAFT MASTERPLAN

New 25m program/
learn to swim pool
(images may be subject to change)



THE DRAFT MASTERPLAN

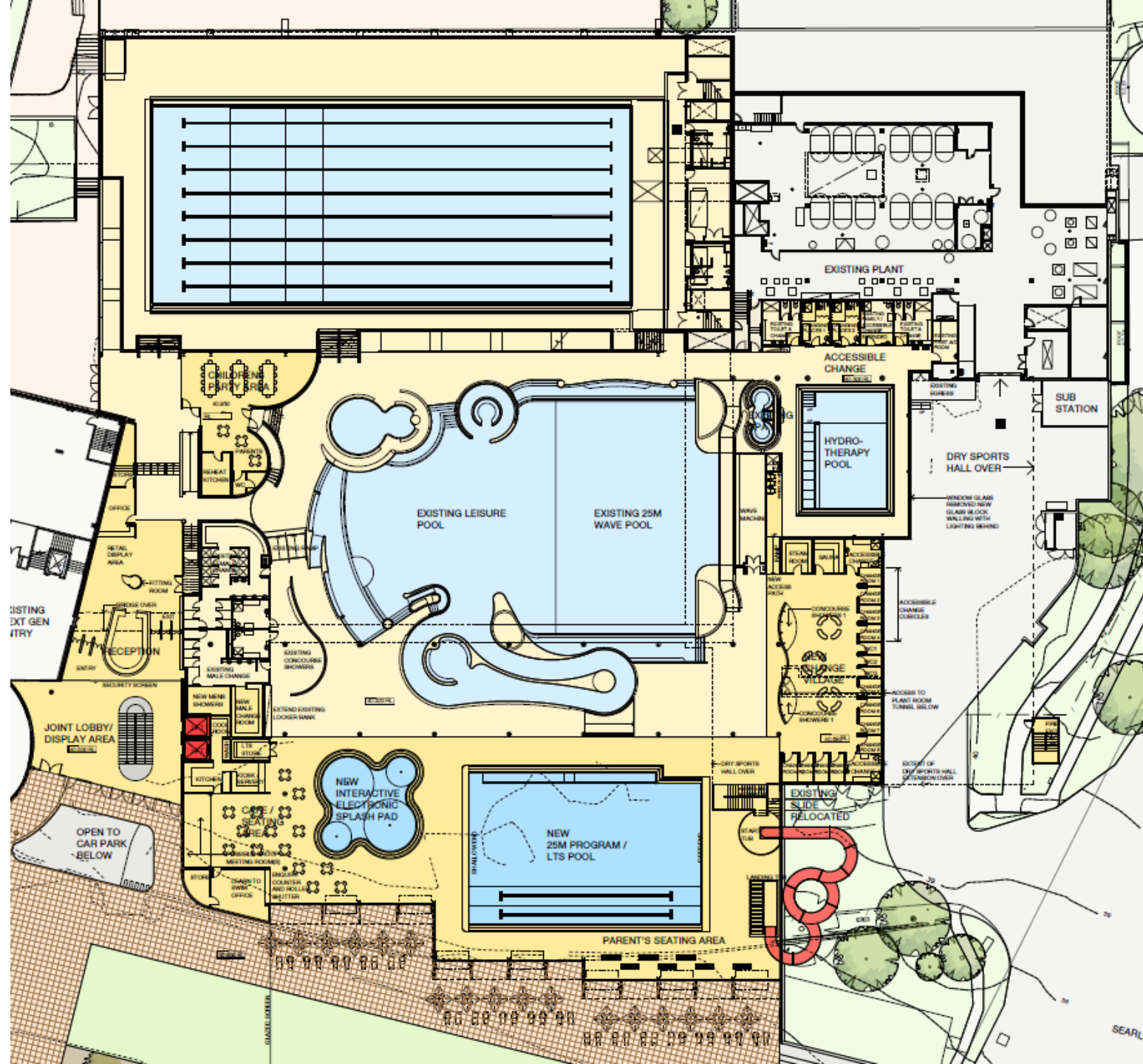
New interactive splash pad
(images may be subject to change)



THE DRAFT MASTERPLAN

STAGE 3: Ryde Aquatic Leisure Centre – Entry Level

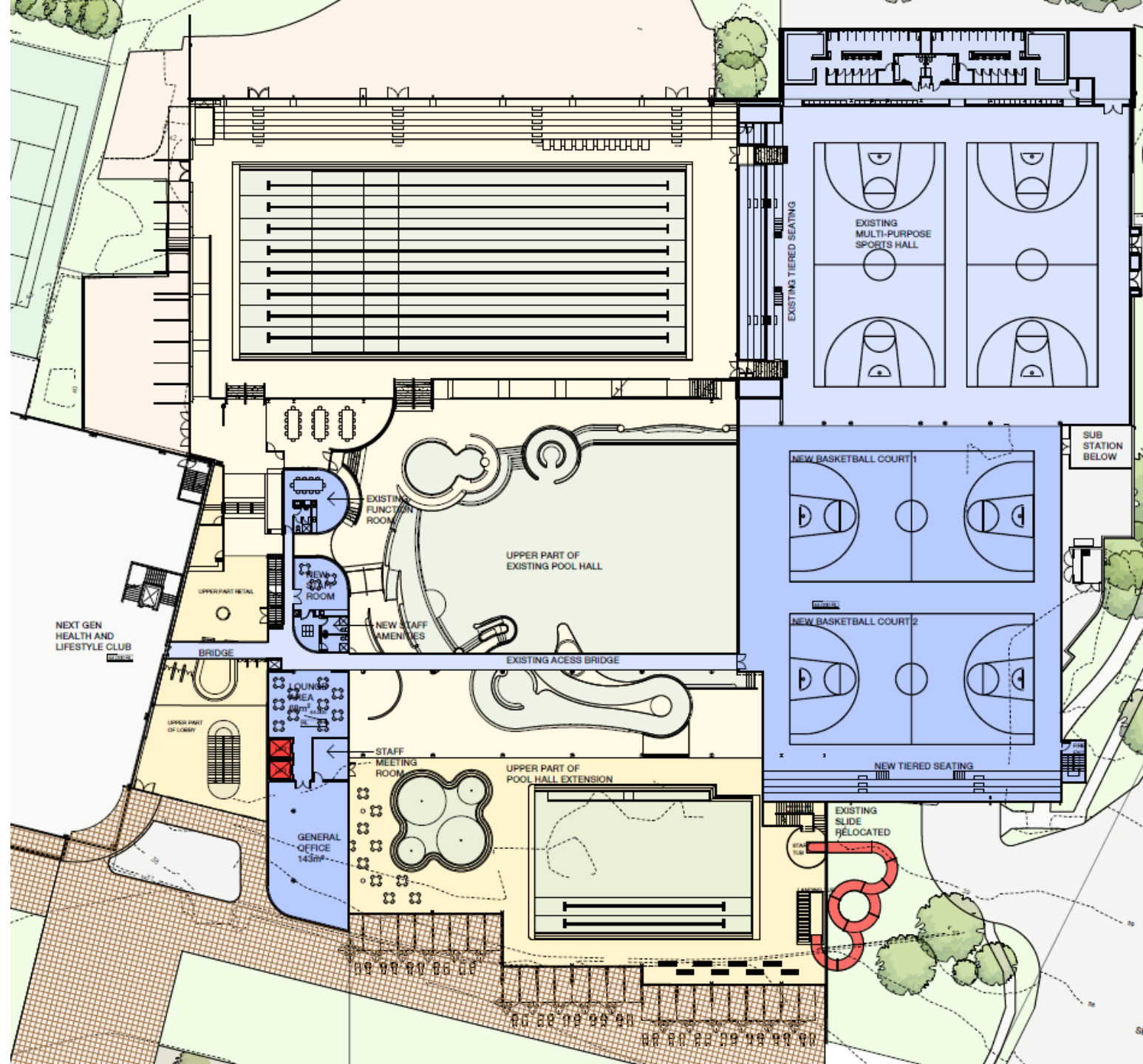
New 25m program/learn to swim pool, interactive splash pad, relocation of water slide, café, seating area, children's party area, new toilet/change facilities, new lobby and lifts.
(design may be subject to change)



THE DRAFT MASTERPLAN

STAGE 5: Ryde Aquatic Leisure Centre – Stadium Level

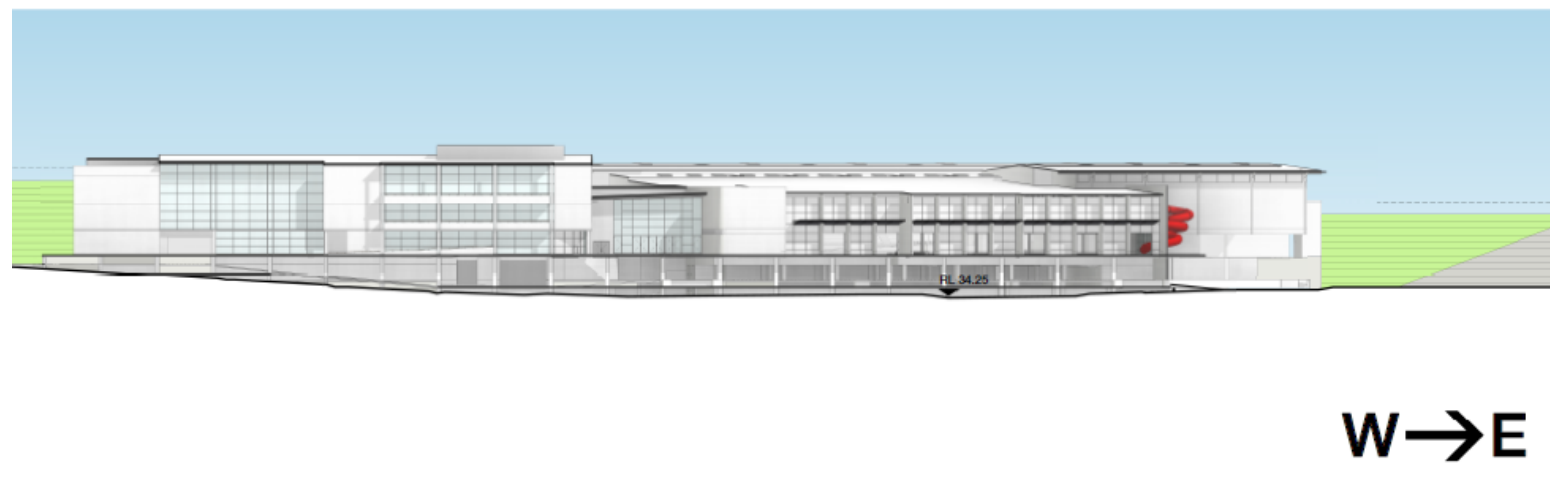
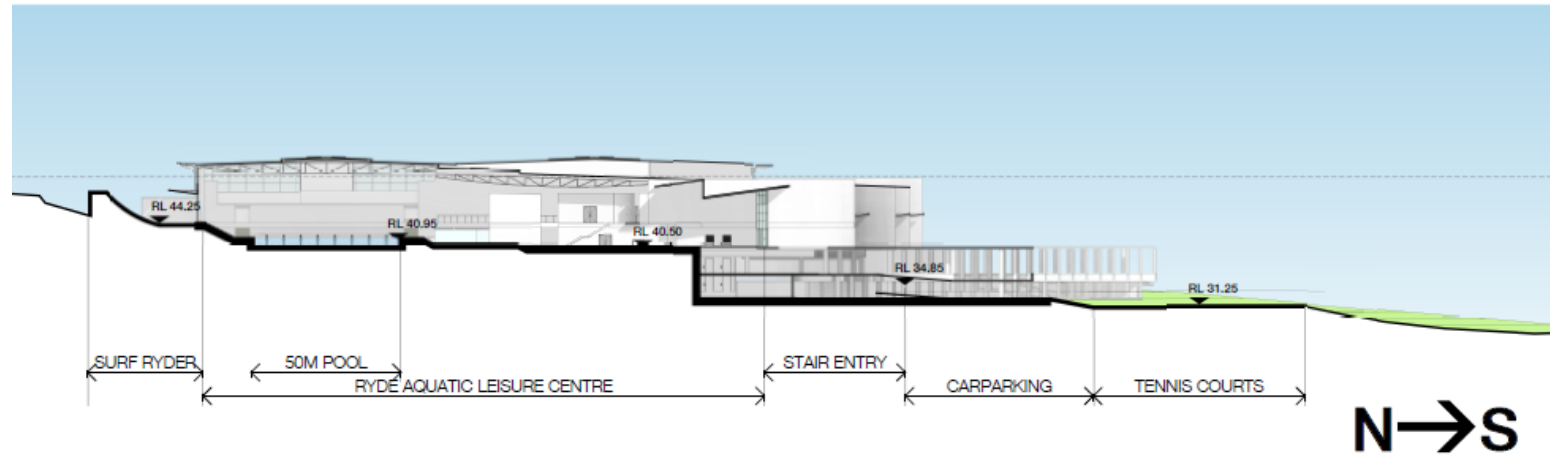
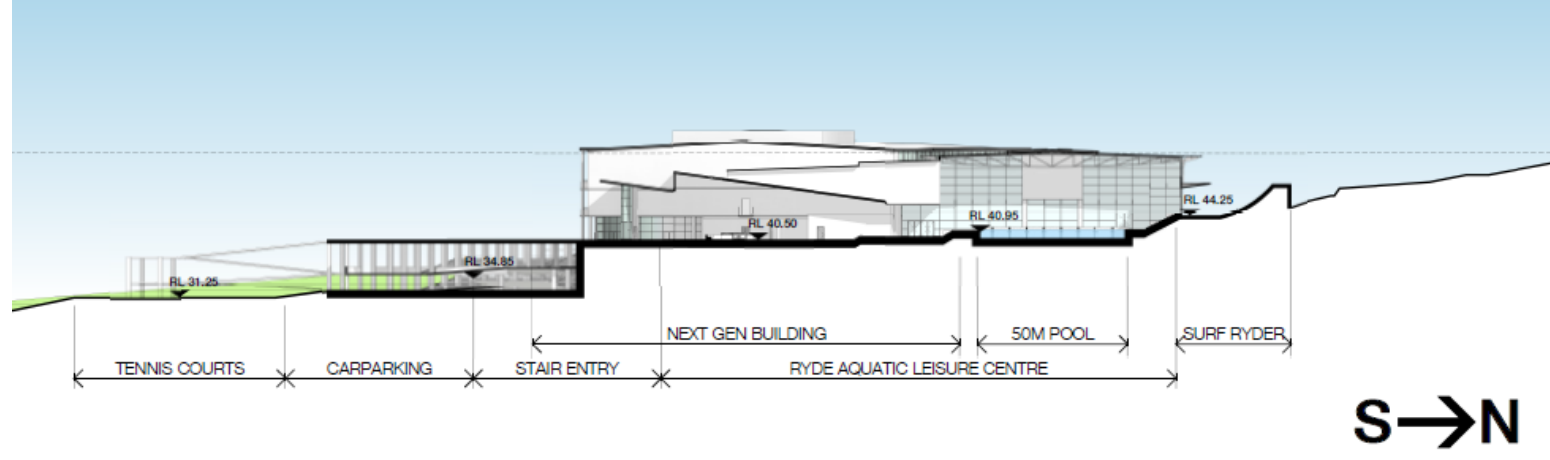
2 additional indoor sports courts with tiered seating in the Stadium and improved staff/office areas.
(design may be subject to change)



DRAFT MASTERPLAN SECTIONS

The site slopes down South from Victoria Rd. These sections have been created to show what the site would look like on the gradient.

(design may be subject to change)



DRAFT MASTERPLAN STAGING

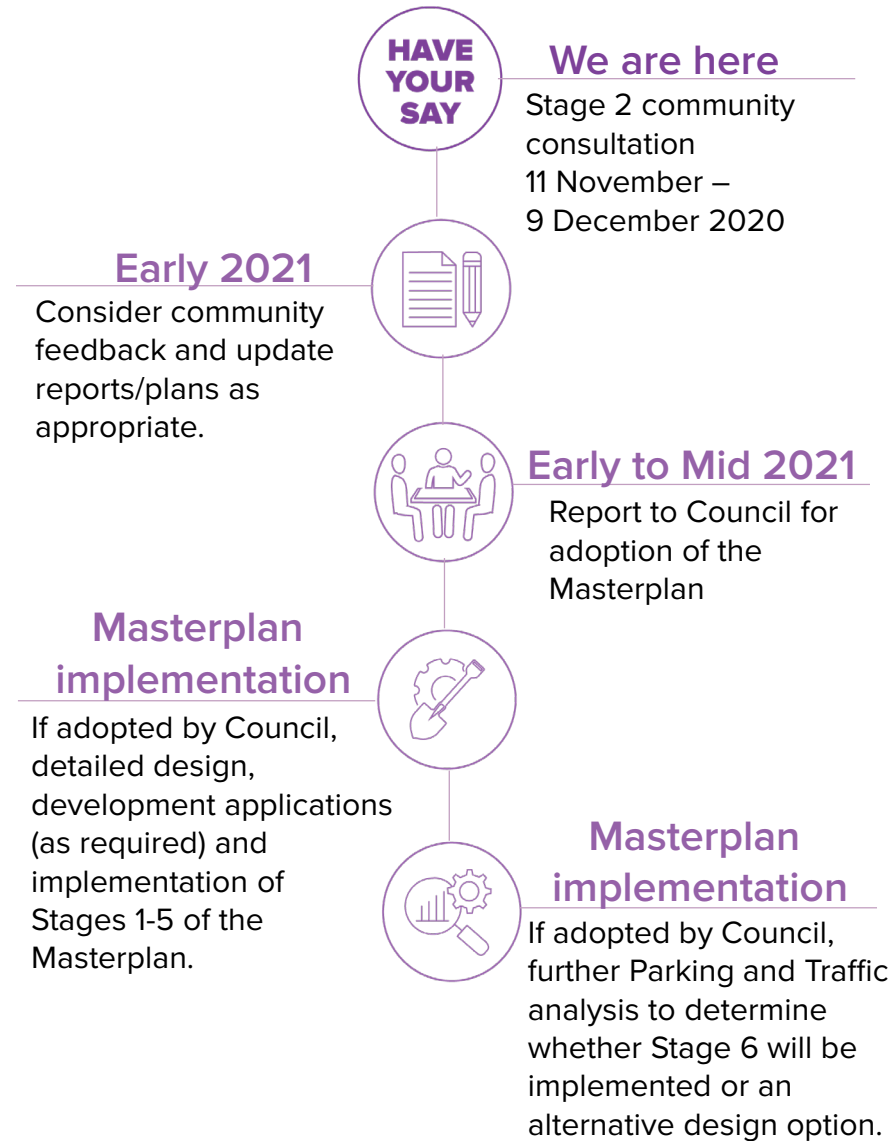
The Masterplan will be implemented in six stages:

1. New car park (South-East)
2. Main car park (West) and western plaza.
3. Ryde Aquatic Leisure Centre entry extension including new 25m pool, splash pad, entry foyer, lifts, café, seating areas and toilet/change facilities.
4. Main car park (East), eastern plaza and southern access path
5. Ryde Aquatic Leisure Centre stadium level extension including two additional indoor sports courts
6. Removal of car park (South-East) pending further parking and traffic analysis.



NEXT STEPS

After the conclusion of this Stage 2 community consultation, Council will need to complete a number of steps and processes prior to Masterplan implementation.





You have can your say on the draft Masterplan and draft Parking and Traffic Study Report in a number of ways:

Online Complete the survey at www.ryde.nsw.gov.au/haveyoursay/OlympicPark

Email cityofryde@ryde.nsw.gov.au

Post General Manager

City of Ryde

Locked Bag 2069

North Ryde NSW 1670

All submissions must be received by **Wednesday 9 December 2020**



Phone Sessions

Due to the current restrictions on public gatherings, Council will be trialling phone sessions in lieu of face-to-face community drop in sessions. We invite you to register for a one-on-one discussion over the phone with a member of the project team to ask any questions you have and provide feedback.

Council will be making phone calls on **Monday 30 November** and **Tuesday 1 December 2020**.

Registration is required for a phone session, please note your preferred time for a call back at www.ryde.nsw.gov.au/haveyoursay/OlympicPark or if you don't have internet access, please call Customer Service on 9952 8222.

Registrations for a phone session close at **11.00am Monday 30 November 2020**.