

Green Links Masterplan

Ryde - Eastwood - Macquarie Park



Background

Why is the Ryde - Eastwood - Macquarie Park Green Links Masterplan being created?

This Masterplan is being prepared in response to:

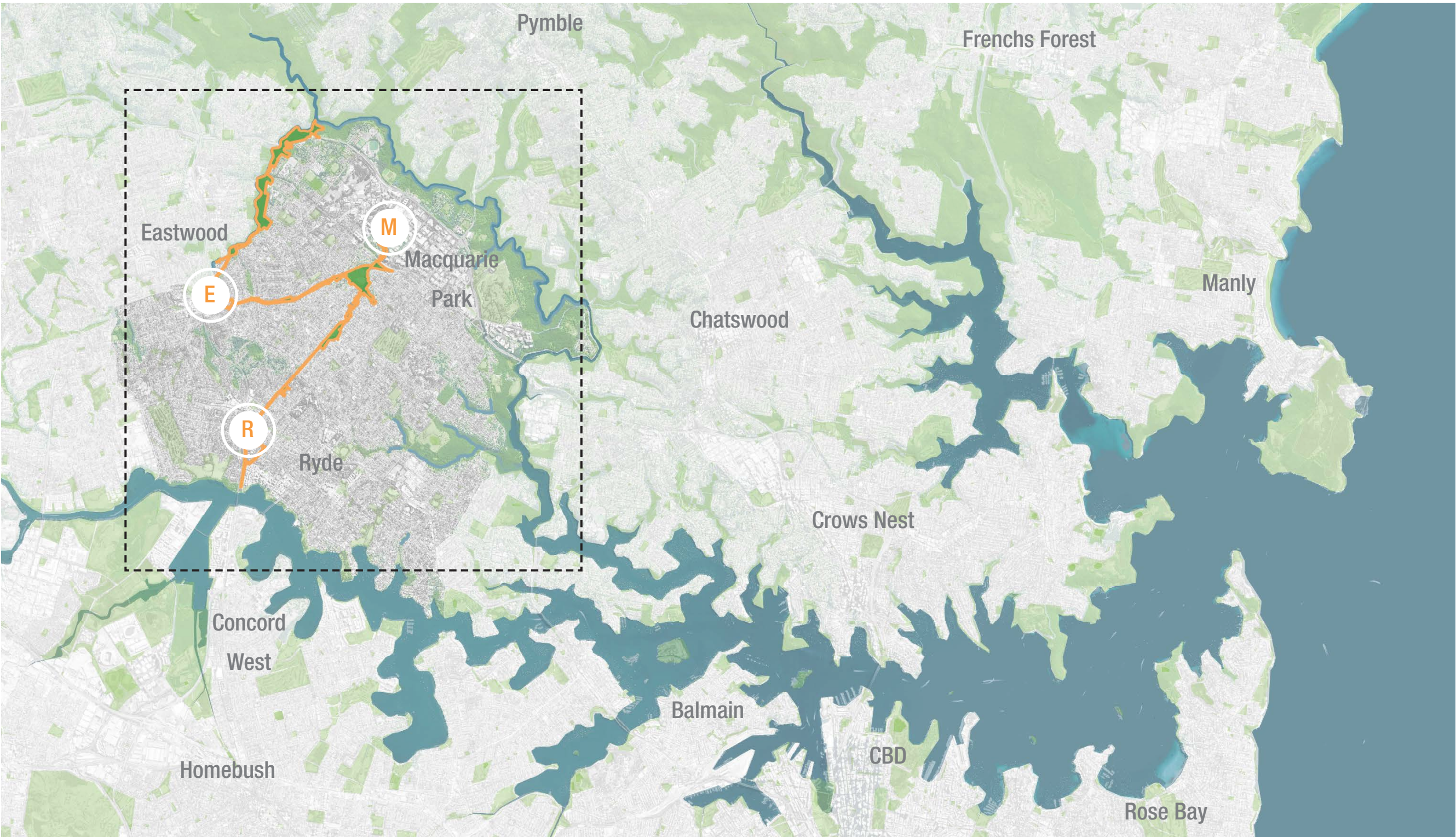
- Greater Sydney Commission, Our Greater Sydney 2056 - North District Plan (March 2018) www.greater.sydney/north-district-plan
- City of Ryde, Planning Ryde Local Strategic Planning Statement (March 2020) www.ryde.nsw.gov.au/LSPS2020

The North District Plan identifies the Eastwood to Macquarie Park Open Space Corridors as a “Priority Corridor” as follows:

“Eastwood to Macquarie Park Open Space Corridors will be extended and enhanced, including Shrimptons Creek, Terrys Creek and the Booth Road-North Road-Welby Street Green Link.”

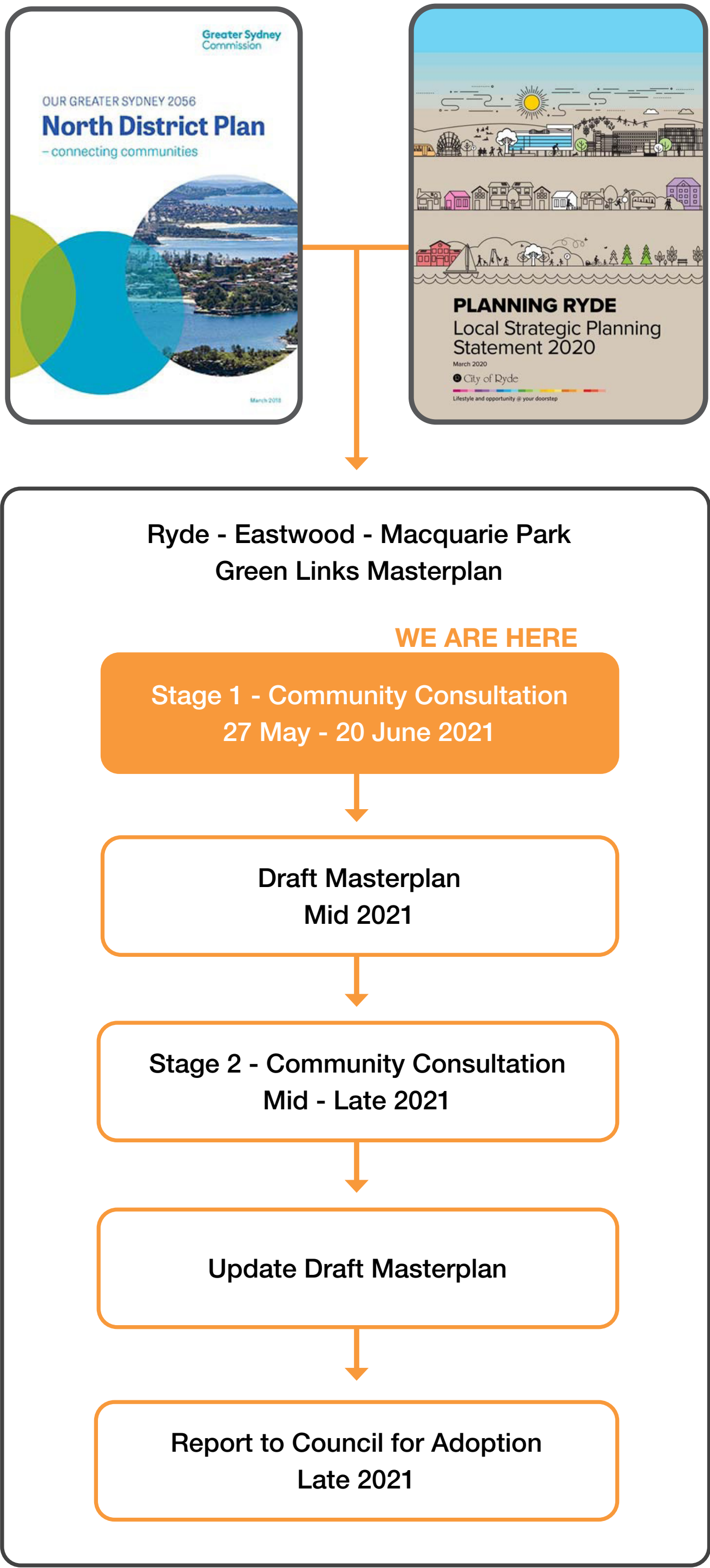
The NSW Department of Planning, Industry and Environment has provided Council with a Metropolitan Greenspace Program grant to create a Masterplan for these three open space corridors.

Council has received in principal support from Sydney Water and Transport for NSW for the inclusion of their lands in the Green Links Masterplan. Council will continue to working in consultation with these agencies.



Context Plan [North District]

Project Timeline



Study Area [City of Ryde Local Government Area]

Green Links Masterplan

Ryde - Eastwood - Macquarie Park



Initial Analysis

The Greater Sydney Region Plan - A Metropolis of Three Cities (2018) will rebalance growth and deliver its benefits more equally and equitably to residents across Greater Sydney. The plan aligns land use, transport and infrastructure planning to reshape Greater Sydney as three unique but connected cities.

Greater Sydney has been divided into five districts: Western City District, Central City District, Eastern Harbour District, North District and South District to realise the Greater Sydney Commission's vision.

City of Ryde falls within the North District, but due to it's central proximity it is in many ways a gateway providing connectivity between Central City District (including Parramatta) and onwards to Western City District; as well as Eastern City District (including Sydney CBD) and onwards to Southern District.

While the City of Ryde provides a network of formal and informal cycle routes, the cross-city terrain can be quite difficult to navigate. The current cycling network lacks in some coherency and there are a number of obvious missing links. The Masterplan aims to address these missing links and provide continuous connectivity.

What is a Green Link?

A "Green Link" is a linear open space corridor, typically used for recreation and/or active transport (e.g. walking, running, riding) and may sometimes include connectivity with other forms of green transport (e.g. public transport). As the term implies, it is typically a 'green' or vegetated corridor.

What is a Masterplan?

While the open space network has served the community well for many years, Council recognises that within the context of a rapidly growing and changing area, the roles and functions of our parks and facilities need to be reviewed and updated to meet the community's needs. The Green Links Masterplan will identify how these three open space corridors can be upgraded and improved over the next 20 years.



Regional active transport links (based on: City of Ryde Cycling Orbitals (2018); Open Street Map (2020))

Green Links Masterplan

Ryde - Eastwood - Macquarie Park



Shrimptons Creek Green Link

This corridor will form the link between Macquarie Park and West Ryde. The northern section, along Shrimptons Creek has an existing shared path running along it, while the southern part is less well connected. Plans have already been developed for the section north of Kent Rd (North Ryde) to Macquarie Park, which will be included in this Masterplan. The Green Link Masterplan will integrate the Sydney Water corridor for open space, recreation and active transport to provide the missing link between Santa Rosa Park and West Ryde.

This Green Link will strengthen the connection between Macquarie Park, West Ryde and onwards to Meadowbank. It will also demonstrate the interconnectivity with the Meadowbank Education and Employment Precinct, Ryde Central, Ryde River Walk which provides active transport link to Parramatta, the other Green Link corridors and the surrounding context.

Overview

This corridor should be maintained and appreciated as a natural area with safe recreational access and act as an ecological buffer to the creek from adjacent urban areas. The parklands will provide clear connections to adjacent environments and networks without compromising their natural character. This corridor links Elouera Reserve, Wilga Park, Quandong Reserve, Booth Reserve, ELS Hall Park, Greenwood Park, Tindarra Reserve, Flinders Park and Santa Rosa Park and has the potential to further connect to Beattie Park and Carara Reserve.

The following precincts for this Green Link have been defined:

- Macquarie Park Precinct:** From Waterloo Rd to the Epping Rd underpass.
- ELS Hall Precinct:** From the Epping Rd underpass to Kent Rd, including ELS Hall Park, Greenwood Park and Booth Reserve.
- Santa Rosa Precinct:** From Kent Rd to Blaxland Rd, including Santa Rosa Park, Tindarra reserve and Flinders Park.
- West Ryde Precinct :** From Blaxland Rd to West Ryde and the connection to Ryde River Walk/Parramatta River Valley Cycleway at Meadowbank.



Existing Conditions



Shared path along open space, with views to Macquarie Park



Shrimptons Creek (there are bush care initiatives along creek and its banks)



The underutilised open space between Shrimptons Creek and Epping Rd



The Habitat community gardens at Santa Rosa Park



Quarry Rd crossing south of Santa Rosa Park, facing the fenced off open space corridor



Fenced off open space corridor at the end of Benson Lane

Green Links Masterplan

Ryde - Eastwood - Macquarie Park



County Green Link

This corridor will form the link between Macquarie Park and Eastwood and will include the future proofing for a potential green transport connectivity. This Green Link has the potential to be a multi-faceted open space corridor for green transport, recreation and blue and green ecology, providing links to local centres, schools and other networks.

The Masterplan will strengthen the connection between Eastwood and Macquarie Park. It will also demonstrate the interconnectivity with the other Green Link corridors and the surrounding context.

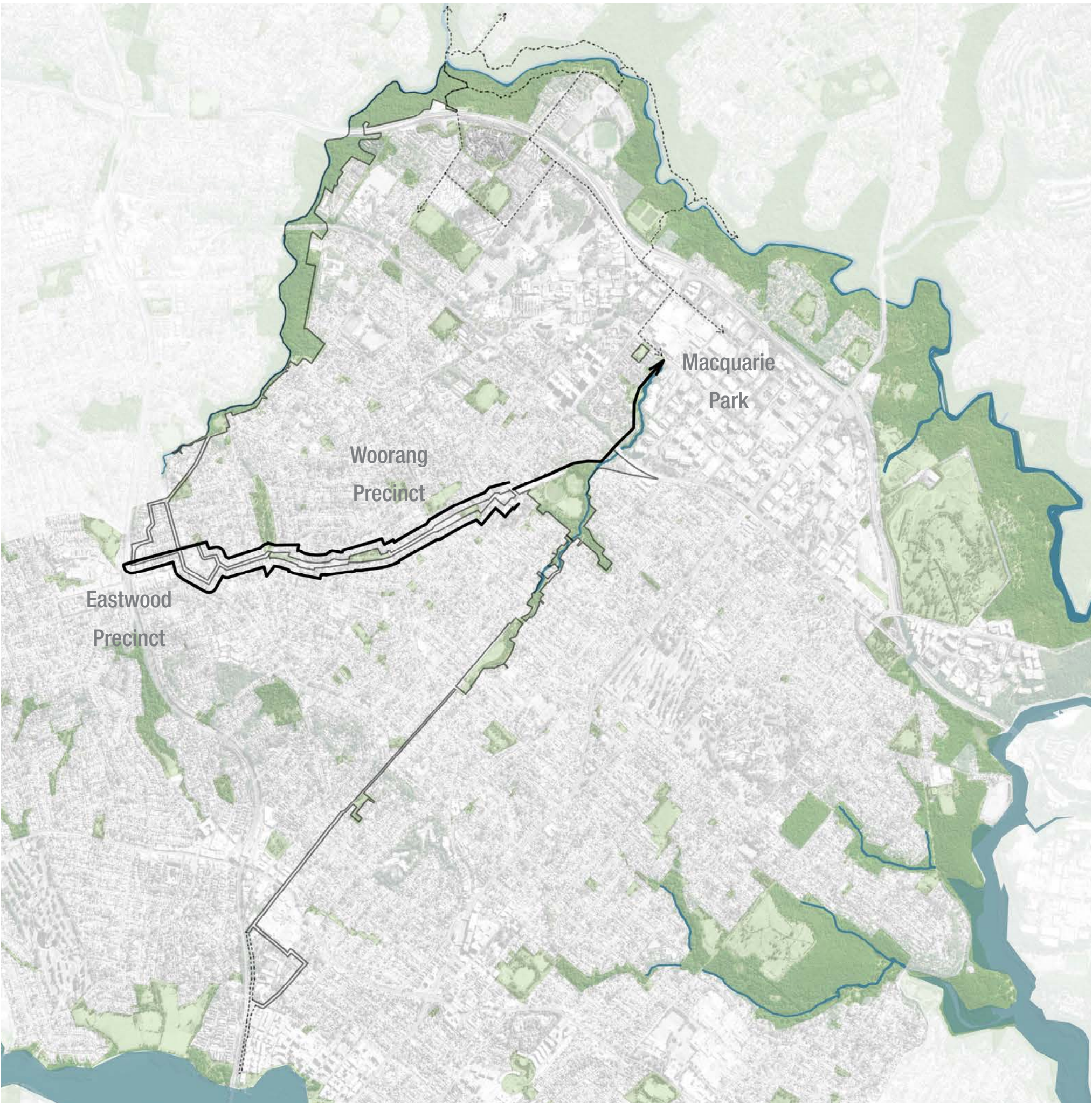
Overview

This Green Link is named after the County Road corridor, a future road reservation. This corridor will provide a direct link from Macquarie Park to Eastwood.

The vision for this Green Link is to provide a green open space network for recreation, green transport, ecology and biodiversity improvements along the corridor.

The following precincts for the County Green Link have been defined:

- Woorang Precinct:** From Kent Rd to Graham Ave.
- Eastwood Precinct:** From Graham Ave to Eastwood station.



Existing Conditions



At Grove St, facing east into the fenced off open space corridor



Large (underutilised) open space between Abuklea Rd and Herring Rd



Entrance to a relatively new section of shared path between Grove St and Orange St



At Orange St, facing west toward the fenced off open space corridor



Tai Chi at Eastwood mall



Ethel St towards Eastwood Centre and Station; including some mature trees in the streetscape

Terrys Creek Green Link

This corridor will form the connection between Eastwood and Macquarie Park (with links onwards to Epping). Terrys Creek is located between Eastwood and Epping and forms an important and well established ecological and recreational corridor linking to Lane Cove National Park. Council has recently completed construction of pathways and a new boardwalk. The focus for this link in this Masterplan will be on access points (including improving amenity at these points), connections to surrounding networks, and a future connection between the City of Ryde and Epping in the City of Parramatta local government area (as identified in Ryde's Local Strategic Planning Statement).

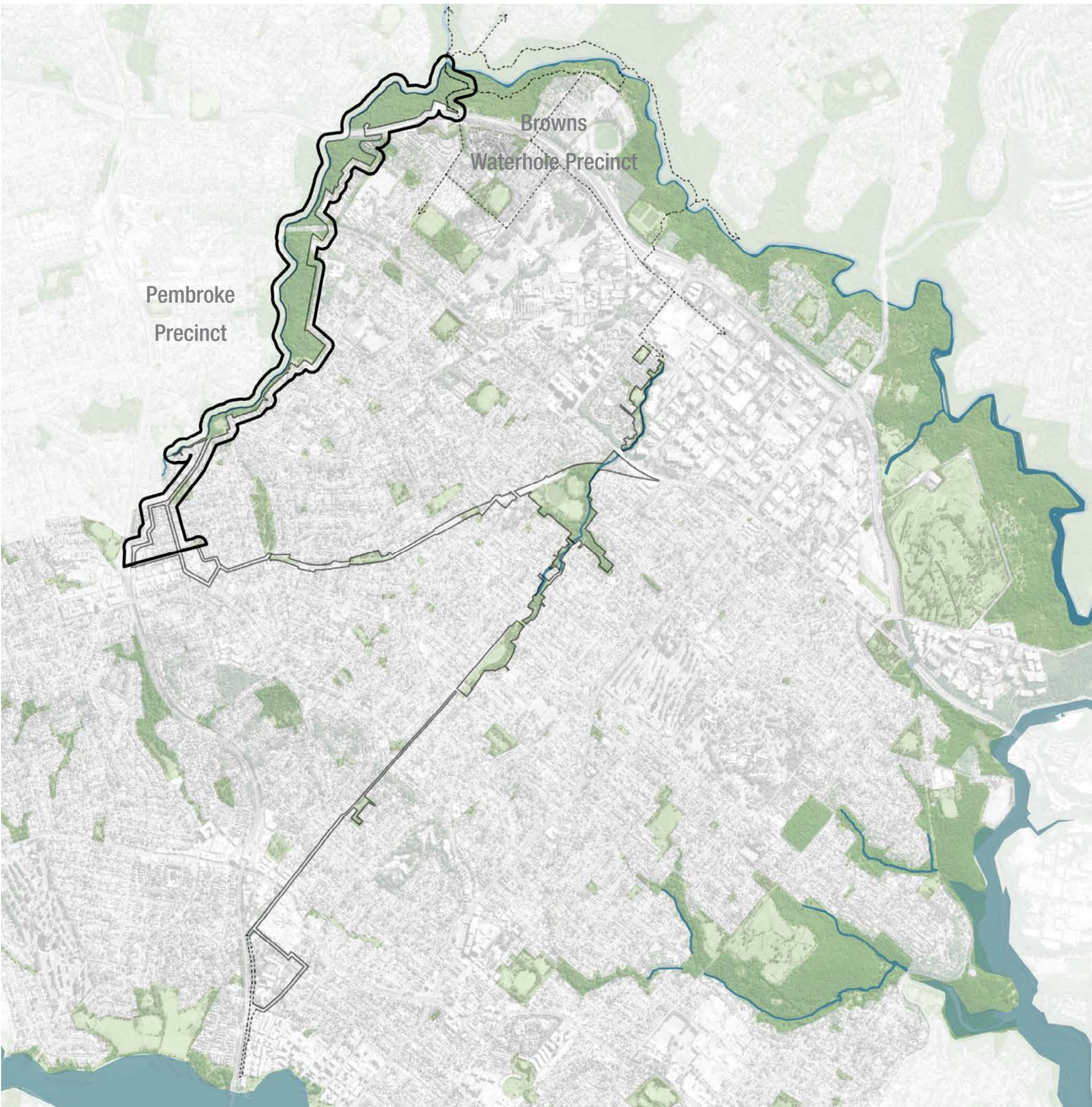
The Masterplan will strengthen the connection between Eastwood and Browns Water Hole. It will also demonstrate the interconnectivity with Macquarie Park and the other Green Link corridors.

Existing Conditions

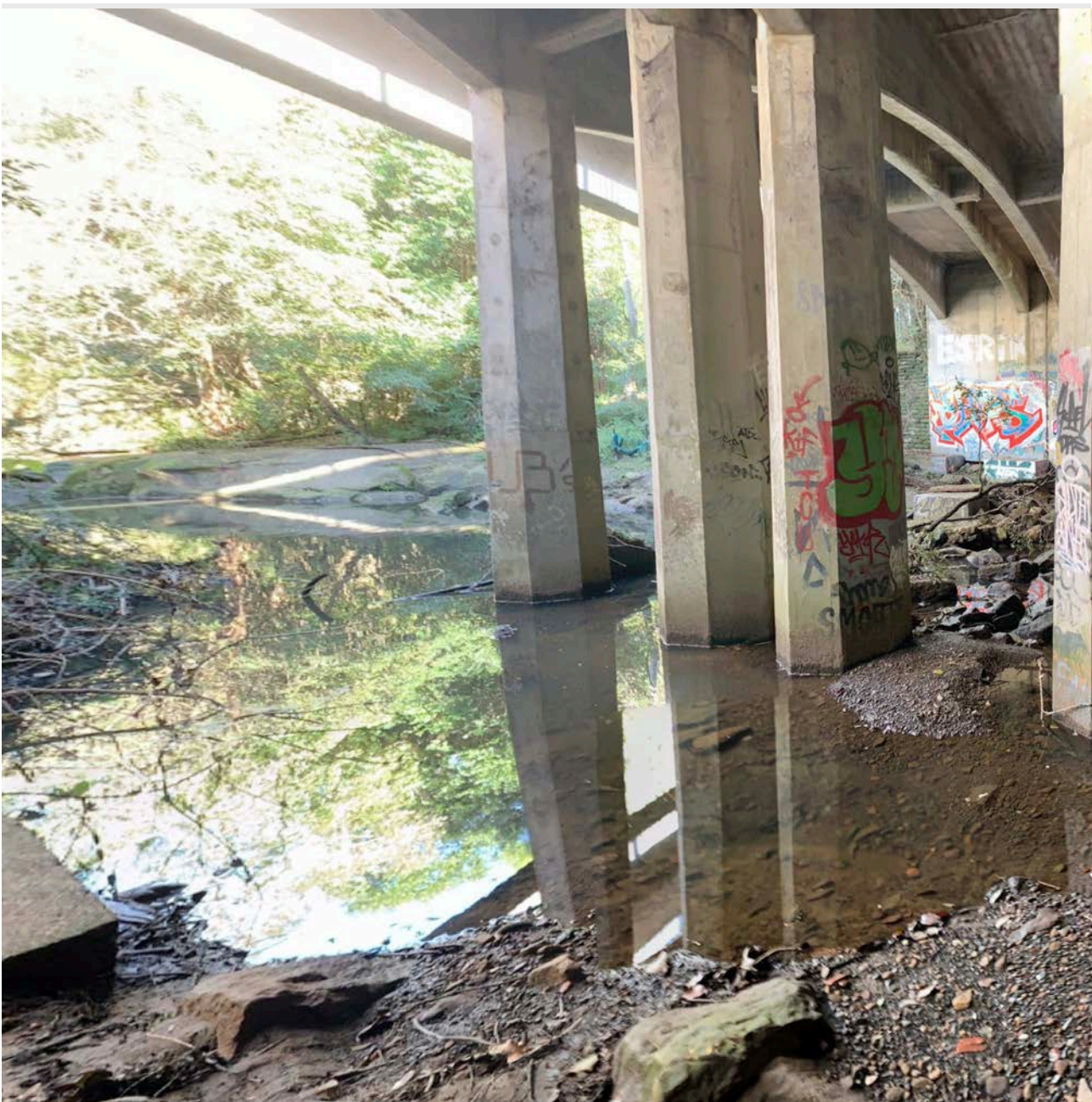
Terrys Creek forms an important regional biodiversity corridor, connecting to Lane Cove National Park. While recreational paths and boardwalks are provided through this area, the main focus is environmental; to protect and enhance the existing ecology.

The following precincts for the Terrys Creek Green Link have been defined:

- Pembroke Precinct:** From Forrester Park and the M2 motorway, east of Terrys Creek and along Pembroke Park and Lucknow Park.
- Browns Waterhole Precinct:** From north of the M2 motorway underpass to Macquarie Park, via Browns Waterhole.



Existing Conditions



Epping Rd underpass is an ecological pinch point in the corridor and could be improved to encourage safe passage through for fauna



Terrys Creek Waterfall



M2 motorway underpass at Busaco Rd offers an opportunity for lighting (art)



Forrester Park: the access points to Terrys Creek could be further activated at this park



Terrys Creek walk



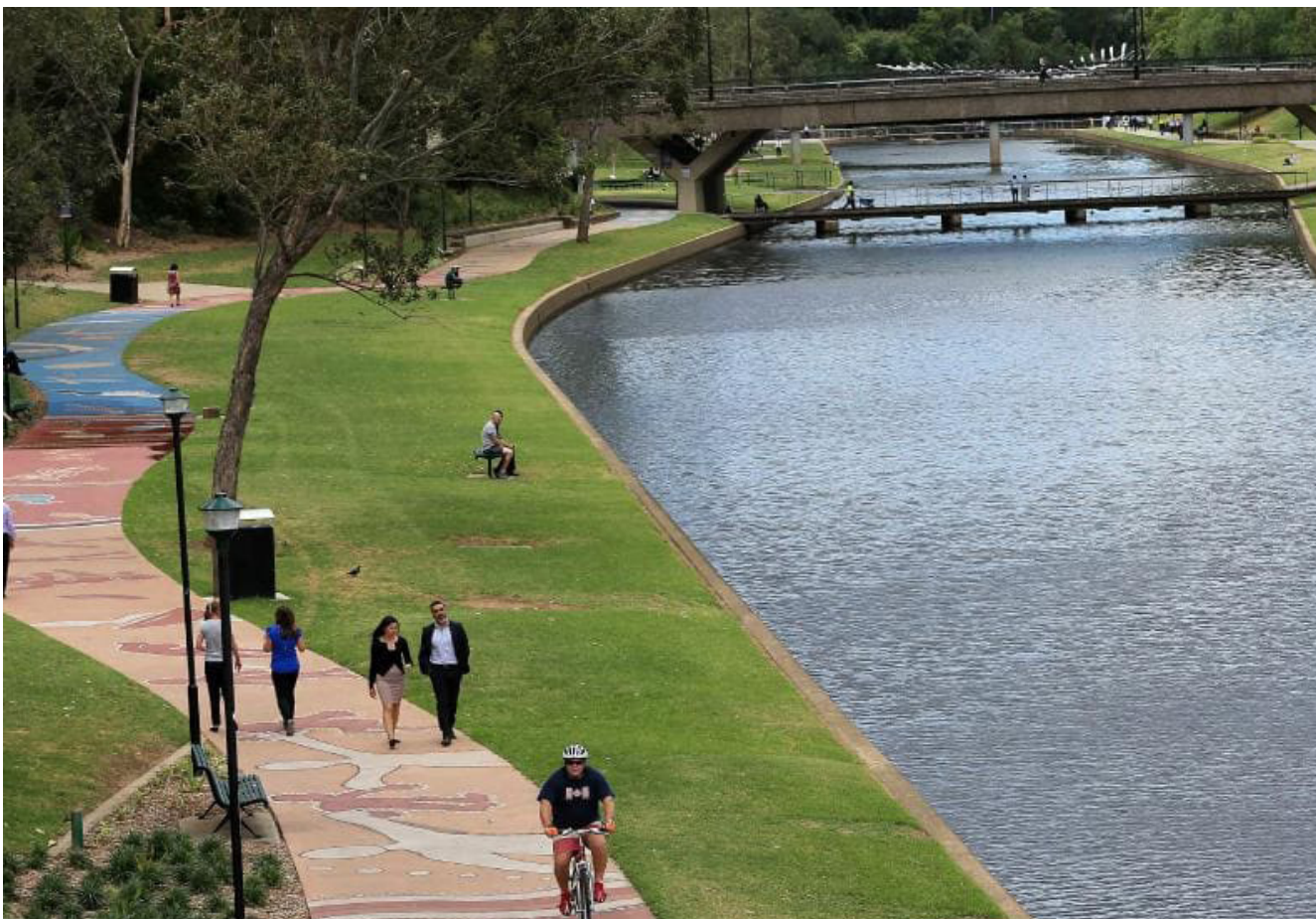
The Busaco Trail (bushfire trail) connecting Browns Waterhole with Busaco Rd, Macquarie Park

Green Links Masterplan

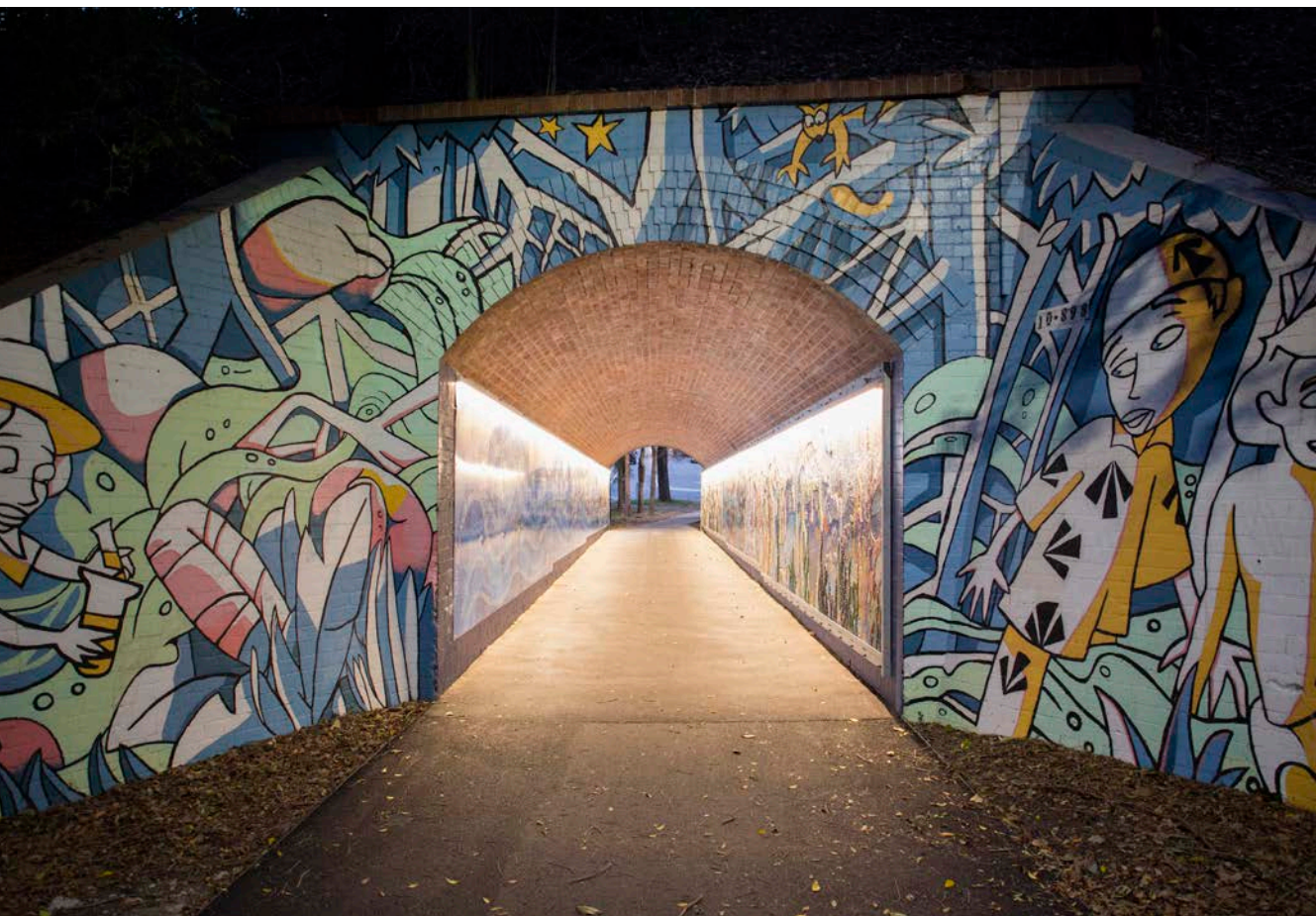
Ryde - Eastwood - Macquarie Park



Precedent Images



Shared user path for walking and cycling
Parramatta River Valley Cycleway



Artwork on pedestrian/cycle tunnel
Cooks to Cove Greenway, Inner West



Fitness and active recreation opportunities
Narrabeen Lagoon Trail, Northern Beaches



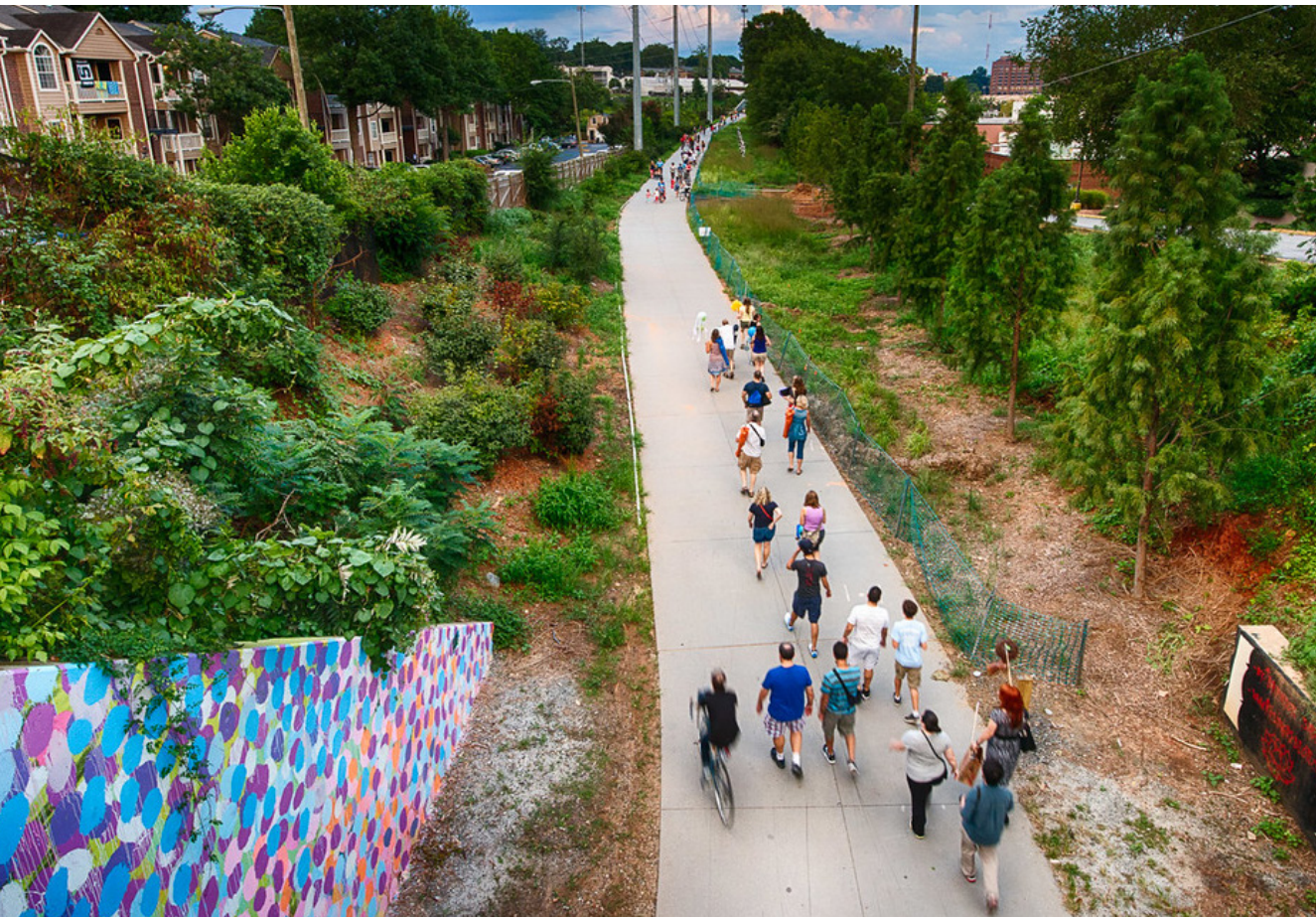
Cycleway enhanced with trees and gardens
Bourke Street Cycleway, Sydney



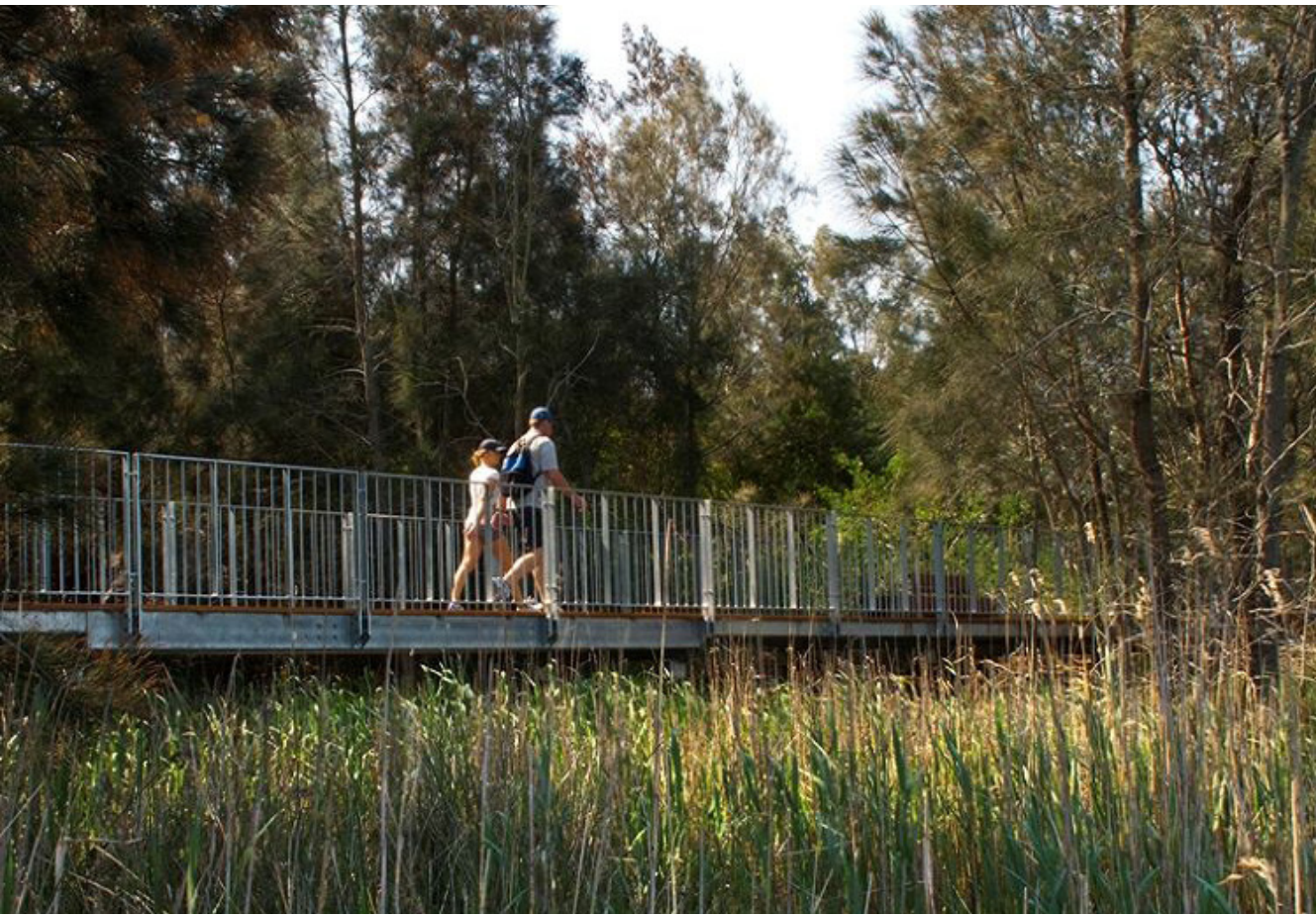
Inclusive social places and rest stops
Plan Del Verde Y De La Biodiversidad, Barcelona



Children play opportunities
Hyde Park, London



Shared user path with re-vegetation
Beltline, Atlanta



Pedestrian bridge over naturalised creek
Sydney



Walking path in natural setting
Bishan, Singapore



How do I give my feedback?

You can have your say on the Green Links draft Masterplan in a number of ways including:

- Online** via the online survey by scanning the QR code or at www.ryde.nsw.gov.au/haveyoursay/Greenlinks
- Email** cityofryde@ryde.nsw.gov.au
- Post** City of Ryde, Locked Bag 2069, North Ryde NSW 1670

Written submissions must be clearly marked "Green Links draft Masterplan".
All feedback must be received by Sunday 20 June 2021.
For Further Information: Visit www.ryde.nsw.gov.au/haveyoursay/GreenLinks
Email cityofryde@ryde.nsw.gov.au
Phone Customer Service 9952 8222

Scan the QR code for more information



한국어
详情请看
(QR code for translated information)

