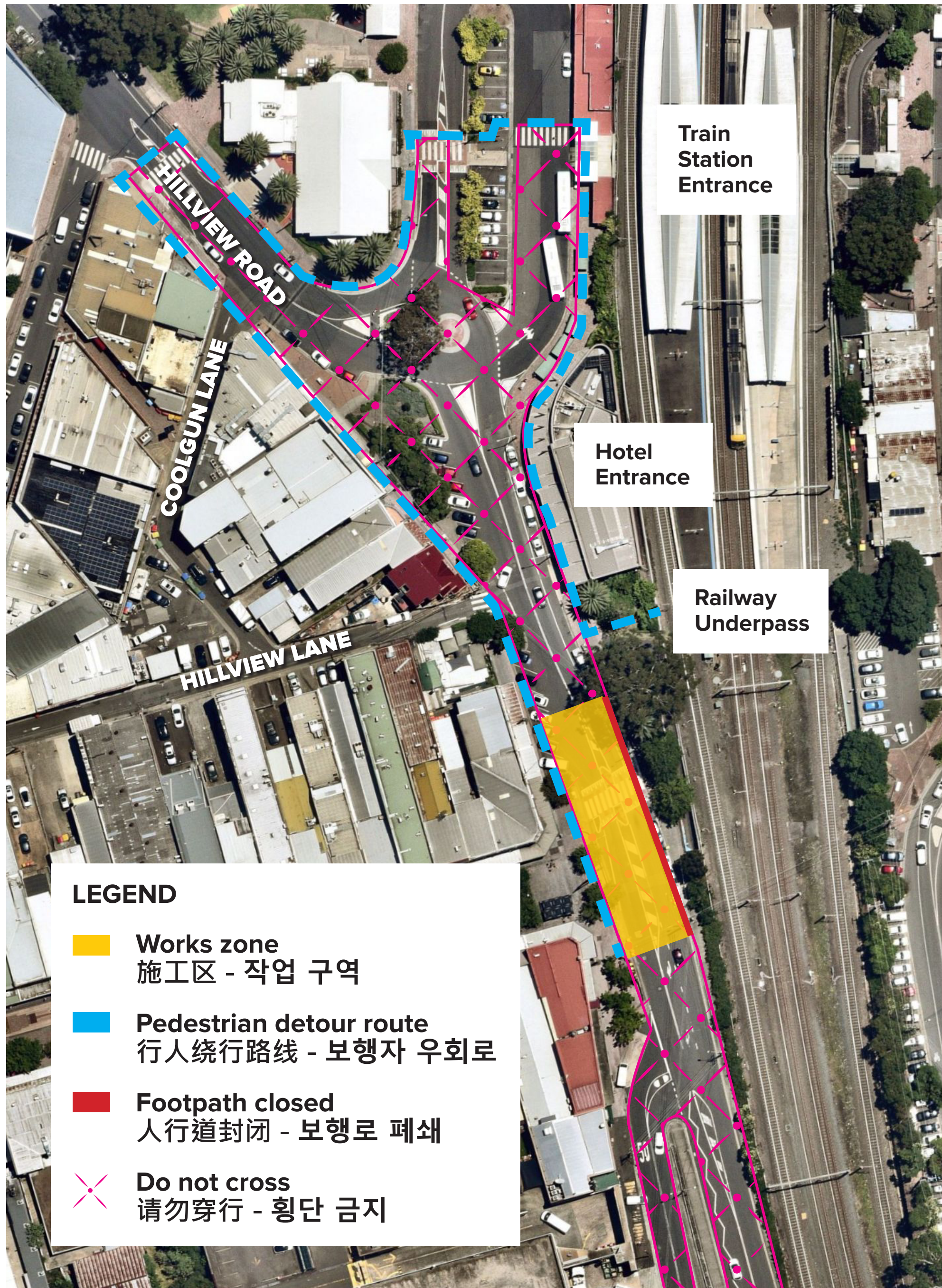


PEDESTRIAN DETOUR IN PLACE

The City of Ryde is installing traffic lights at the West Parade and Rowe Street Intersection, replacing the existing pedestrian crossing.

During these works the pedestrian crossing and footpath on the Eastern side will be closed. For your safety during these works, please follow the pedestrian detour below.



中文



한국어



 City of Ryde

For further information please contact:

Gaanesh Prasad | Project Manager

Phone: (02) 9952 8139 | Email: GaaneshP@ryde.nsw.gov.au

Visit: www.ryde.nsw.gov.au/EC