

New Amenities Building at Kissing Point Park, Putney NSW
Construction Update – End of May 2022

I. Works Completed

- Brick Installation and Cleaning
- Rendering
- Waterproofing 1st and 2nd Coat
- Tile Bedding
- Mesh/Solid Panel Installation (90% completed to date)



II. Ongoing Works

Floor Tiles Installation



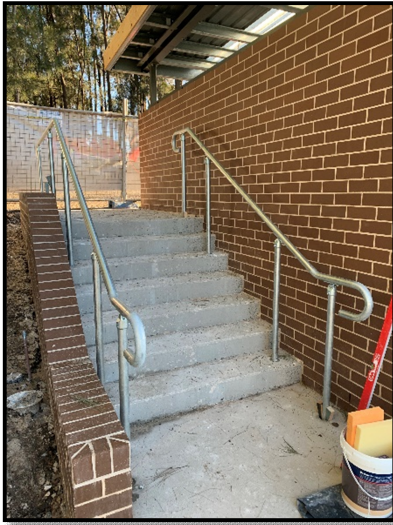
Floor Tile Skirting



Wall Tiles Installation



Moddex Handrail Installation



III. Upcoming Milestone Targets

- Aluminium Battens
- Signage Logo