



Be Waste Smart

Achievements 2018

- Sustainability
- Waste
- Natural Areas
- Parks

Renewable Energy



Council resolved to investigate how a **Renewable Energy Target** could be mandated by **June 2030** to ensure at least **60% of electricity use** that Council is responsible for can be delivered **from renewable energy sources**.

Southern Sydney Regional Organisation of Councils Power Purchase Agreement



We joined with **18 councils** across the state to purchase a percentage of our power from Moree Solar Farm to **increase investment in renewables**.



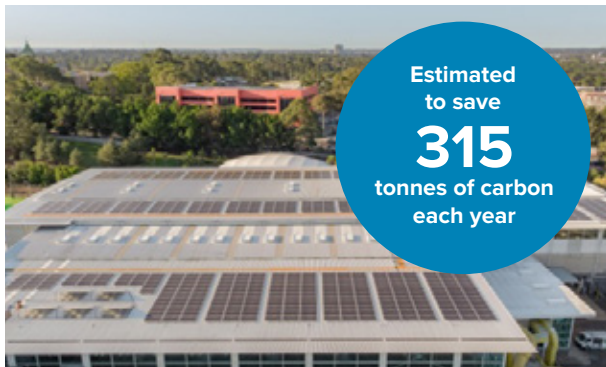
Council continued to **divest** its term portfolio **from all fossil fuel-aligned financial institutions** such as oil, coal and gas companies as a way of helping tackle climate change and protecting the environment.

Eastwood Hall

A **7.8Kw solar PV system** was installed on Eastwood Hall which offsets **24% of the energy consumption** on site. The system also offsets approximately 12 tonnes of greenhouse gas emissions per annum, avoiding burning the six tonnes of coal.



RYDE Ryde Aquatic Centre



Estimated to save **315 tonnes of carbon** each year

Estimated to **save 315 tonnes of carbon each year**, Ryde Aquatic Leisure Centre's 846 solar panels are complemented by a co-generation plant to further reduce consumption. The 200.33kW solar PV system will **reduce over 12% of on-site electricity consumption** with annual expected **saving of \$35,000 per year**.



CITIES POWER PARTNERSHIP

Council joined a network of over 100 other councils working together to transform our energy future and making the switch to clean energy. We have committed to pursuing five actions over the coming years.



Provide Council resources to educate and support uptake of renewable energy



Install renewable energy (solar PV and battery storage) on Council buildings



Roll out energy efficient lighting, particularly street lighting, across the City of Ryde



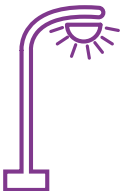
Encourage sustainable transport use through Council transport planning and design



Implement an education and behaviour change program to drive the shift to renewable energy, energy efficiency and sustainable transport.

Emissions Reporting

Our total **greenhouse gas emissions were 10.4% lower** than emissions for the 2016/17 financial year. This decrease was mainly due to lighting upgrades at the different facilities and street lights and improvements in building operations.



Launched SunSPot Tool

Residents can access the free online tool SunSPot to estimate the solar potential of their property. Information is provided on size, orientation, generation and potential payback of a solar system on a mapped area of roof space. www.ryde.nsw.gov.au/SunSPot



122

Free Home Waste and Sustainability Advisory Service assessments delivered to residents

Residents received free, independent, tailored advice on how to reduce costs associated with energy, gas and water usage and how to improve their waste management in their homes and reduce their ecological footprint.

Water Quality

Water quality monitoring in our five creeks continues to have consistent results over the years despite increasing development. The program was expanded this year to include assessment of the riparian vegetation that will be used to inform our natural areas program.



Stormwater Harvesting

Council's recent stormwater harvesting system at Bill Mitchell Park has achieved total water savings of over 2,000 KL since May 2018.



Shrimptons Creek

Parts of Shrimptons Creek at Wilga Park were rehabilitated including major biodiversity corridor works with planting of over 7,500 riparian and corridor plants for small native birds and canopy cover. Three water quality improvement structures were installed and instream debris removal was undertaken. This project won a 'Highly Commended' award at the Local Government NSW Excellence in the Environment Awards.



Making Parramatta River Swimmable Again

With our partner agencies in the Parramatta River Catchment Group we launched The Parramatta River Masterplan - our plan to **make Parramatta River swimmable again**. This was the culmination of years of background research, community consultation and collaboration with our many partners and community work and includes a 10-step plan to bring back swimming to the River. This project was a finalist in the International River Foundation's 2018 Riverprize.

Putney Park was announced as one of three sites to be activated for swimming by 2025 as part of this plan. The image below shows the artist's impression of what this might look like.

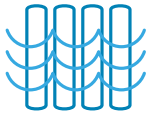


Get the Site Right Campaign

We joined 20 other Councils in a month long compliance blitz in May targeting erosion and sediment controls on building sites to protect our waterways. 746 sites were inspected across Sydney and the Central Coast resulting in \$212,412 in fines issued.



Environmental Education



Ocean Action Pod

The Ocean Action Pod visited our Ryde Environmental Education Network member schools providing fun and interactive education around the growing problem of plastic waste in our waterways and impacts. There are currently **17 schools in the network**.



Sustainability Events

Free community sustainability events held including World Environment Day celebrations where we launched Councils phase out of single use plastics, Furoshiki workshops, sustainability talks on Backyard Biodiversity and Urban Resilience, World Water Day celebrations, River Keeper network meeting and a Green Hub at the Granny Smith Festival.

Sustainable Waste 2 Art Prize (SWAP)

Over 200 entries submitted making it the biggest year yet. 80 creative works exhibited and \$2,500 in prize money awarded. Six free art workshops using reclaimed materials were held to help the community prepare a piece to enter the competition.

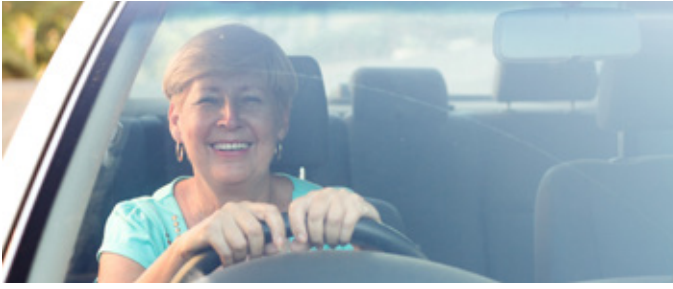


200
Entries

80
Creative works
exhibited



Sustainable Transport



Car Share



Following up on the successful implementation of a pilot on-street car share space in Macquarie Park, Council is working on a car share policy and will gauge broader interest from car share operators in dedicated car share spaces within city-owned streets and car parks in 2019.

Travel Plans

We assessed travel plans for all new major developments and ensured developers have considered sustainable transport options in their new buildings, from bike parking to car share pods to minimising car spaces.



PAMPS

Using our seven previous Pedestrian Access and Mobility Plans (PAMPS) town centre studies, we continued to improve pedestrians and mobility connections in Meadowbank and West Ryde. Works included upgraded kerb ramps, pedestrian refuge islands and new footpaths.



Bike Share

We partnered with Transport for NSW and our fellow Northern Sydney councils to develop Bike Share Guidelines for operators in our City.



Shop Ryder Free Community Bus Service



Approximately
52,000
passenger trips in 2018



Resilience Plan

The Resilient Sydney plan was released by 100 Resilient Cities, for which Ryde is an ambassador Council. The plan works with the Greater Sydney Commission to ensure Government, businesses and communities across Sydney can survive, adapt and thrive in the face of increasing global uncertainty and local shocks and stresses.



Waste

Recycling and Garden Organics

48,000 households in Ryde are provided with waste services.

Last financial year, Council collected over:



from residential properties

TV and Computer Collections

During 2017/18, 44 tonnes of electronic waste was collected and recycled. This project not only helps to minimise our reliance on virgin resources, it also helps to prevent hazardous material like mercury and cadmium from entering into landfill.



Chipping and Mulching Service

910 residents took advantage of this free service which leads to approximately 72 tonnes of waste being diverted from landfill.

910
Residents



Community Recycling Centre

In 2017/2018, 82,000 kilograms of material were recycled or responsibly disposed of at the Artarmon Community Recycling Centre.

Problem Waste Recycling Stations

Residents recycled over 1130kg of batteries, 210kg of mobile phones, 230kg of ink cartridges and 180kg of light bulbs through council's six Problem Waste Recycling Stations.

That's over 1750kg of plastics and precious metals such as mercury, zinc, copper and gold that were repurposed and reused.



Household Chemical CleanOut

848 participants attended the event and a total of 34 tonnes of chemicals were received and disposed of responsibly. Paints and oils made up 65% of materials collected.

848
Participants

34
Tonnes of chemicals were recycled or safely disposed of



Composting and Worm Farming

105 residents bought a subsidised compost bin or worm farm from Council and started reducing their organic waste.



Waste Workshops

We held 20 waste-wise workshops including composting and worm farming, waste tours, de-cluttering, and how to reduce your use of single-use plastics. Over 450 residents attended these successful workshops throughout the year.

20
Waste-wise
workshops

Over 450
Residents
attended



Clothing Bins

Over 30 Smarter Cleaner Greener charity clothing bins have been installed throughout the City.

1,200
Tonnes of
clothing

**Have been collected
and diverted from
landfill so far**



Phase out of Single Use Plastics

Council resolved to ban the use of single-use plastic drinking straws and phase out balloons, plastic bottles, plastic cups and plastic bags in all Council operations and Council-sponsored events. Following this, City of Ryde has developed a Single Use Plastics Policy and updated its Waste Wise Events Guidelines. Council is also working towards updating the existing Sustainable Procurement Policy and providing training options.

Recycling in Multi Unit Dwellings

120 building complexes requested and received waste education material which provided residents with information on how to reduce overall waste, prevent contamination and illegal dumping.

Over 50 new multi-storey buildings were inspected and received waste signage, stickers and information on domestic waste services. To help reduce the amount of plastic bags incorrectly disposed of in recycling bins, a trial using recycling tubs in multi-storey buildings is also underway.

Clean Up Australia Day



6 Businesses + **11** Schools + **7** Youth Groups + **17** Community Groups

**Took part in Clean Up Australia Day
throughout the City of Ryde**

This combined effort led to rubbish being removed from 41 sites including local streets, parks and waterways.

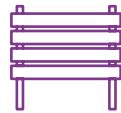
Natural Areas




92Ha

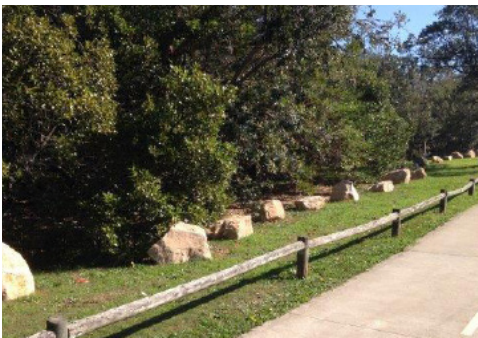
92 hectares of bushland under active management

As part of our ongoing commitment to the management of our natural areas, bush regeneration works were undertaken in 47 parks and reserves across Ryde.



13 Bushland signs installed

at key bushland parks and reserves along Buffalo Creek and at Stewart Park and Bundara Reserve. The signage highlights significant features about the parks, the significant vegetation communities they contain and promotes an awareness of the problems of illegal dumping.



Saltmarsh Protection

Settlers and Kissing Point Park boulder delineation of endangered saltmarsh. The delineation will allow the endangered saltmarsh to expand along the intertidal zone.



Bushcare

Council supported Bushcare activities at 24 sites with Bushcare volunteers working to restore 11 hectares of bushland. They celebrated their achievements at the end of year BBQ at Santa Rosa Park where Council said thank you to the volunteers for their service.



Over **300** people attended World Environment Day 2018

at Memorial Park, Meadowbank to celebrate the theme of "Beat Plastic Pollution". Thanks to Sydney Water's refill station, World Environment Day attendees helped save 125kg of plastic waste from going into landfill – just by drinking tap water on the day!

Flora and Fauna Studies 2018

This year's study of 42 bushland parks and reserves across Ryde discovered:

133
Fauna species,
including
6
threatened
species

403
Native plant
species

12
Different
vegetation
communities



National Tree Day 2018 at Laurel Park



Over
200
Volunteers

Planted
900
Plants



Laurel Park was abuzz with activity on National Tree Day. The local community was on board to help transform this park into a wildlife corridor, getting their hands dirty and making a difference. The plantings along Buffalo Creek enhance biodiversity and look fantastic!



7 Community
Partnership Days



Feral Animal Control

Council implemented a Feral Animal Control program, targeting rabbits and foxes on Council land in key corridors along Buffalo Creek, Terrys Creek and specific parks such as Dunbar Park, Marsfield Park, Waterloo Park, Wilga Park, Glades Bay Reserve, Brush Farm Park. The control of pests such as rabbits and foxes has many challenges in the urban environment. At the forefront of the program was safety of the community members, their pets, and native wildlife. A variety of techniques were used, as appropriate in particular areas.

Natural Areas



Community Planting activities

Community Planting activities and corridor plantings occurred at Tuckwell Park, Darvall Park, Brush Farm Park and Field of Mars Reserve. During a school holiday guided walk at Waterloo Park, the kids helped to plant a wildlife area.



Wildlife Protection

To help educate the community about the importance of Field of Mars Reserve as a Wildlife Refuge a flyer and film clip was produced to encourage residents to protect native wildlife from pet cats and dogs.



Terrys Creek walking trail upgrade

Bushwalking along Terrys Creek in Pembroke Park has become easier and safer with the installation of fibremesh boardwalk decking in selected areas with significant erosion. We hope more people will be able to explore and enjoy this significant bushland corridor, a link to the Lane Cove National Park that is significant for both wildlife and recreation.



Best Bushcare site



**Meadowbank Park
Spring Gardens Competition**

Winner

25 October 2018

Pictured: Clr Penny Pedersen and Marilyn Wise from the Meadowbank Park Bushcare Group.

Elouera Reserve upgrade

Elouera Reserve upgraded to include new play equipment, illuminated footpath connections from units to the train, BBQ and picnic area and water bottle refill station.



Street Tree Planting Program

Roll out of our Street Tree Planting Program with the focus on high priority areas identified by residents or as being a significant habitat corridor.



Spring Garden Competition

This year's competition saw 120 entries. The competition has been running for over 25 years now.



Feedback sessions

Multiple community consultation sessions held to integrate community feedback into park planning and upgrades.



Guided walks

Guided walk program including bushland, historical and NAIDOC week walks.

Filtered Water Stations

17 filtered water stations have been installed in our City's parks, sports fields and public places to encourage the community to make smarter environmental and healthy lifestyle choices. Over the last financial year, our residents filled their reusable water bottles with 16,623 litres of water.

17

Filtered water stations installed



Residents filled their reusable water bottles with **16,623 Litres** of water



Morrison Bay Seawall Upgrade

New Morrison Bay Seawall to protect and enhance the local Parramatta River foreshore. Including planting of saltmarsh and improvements to the storm water drainage system, installation of scenic viewing and new seating areas along the path and the upgrade of the existing path to a new concrete shared-path for pedestrians and cyclists.



Be Waste Smart

 City of Ryde