
NOTICE OF MEETING

You are advised of the following meeting:

Ryde Traffic Committee Meeting

Thursday, 20 July 2023

**Meeting Room Landmark, Level 1, North Ryde Office
&
MS Teams**

MEMBERS

City of Ryde (Chair) Senior Coordinator Traffic Operations (for Mgr. Traffic Services)
Transport for New South Wales..... Network & Safety Officer, Central River City
NSW Police ForceRyde Local Area Command
Member for RydeThe Hon. Jordan Lane MP
Member for Lane CoveThe Hon. A Roberts MP

ADVISORS

BuswaysWestern Region

MEETING CONVENOR

Muddasir Ilyas – Senior Coordinator - Traffic Operations
MuddasirI@Ryde.nsw.gov.au

NOTICE OF BUSINESS

APOLOGIES

CONFIRMATION OF PREVIOUS MINUTES

AGENDA ITEMS

ITEM (A) - ROWE LANE, EASTWOOD – GIVE WAY HOLDING LINE AND PAINTED ISLANDS

ITEM (B) - CHARLES STREET, PUTNEY - PEDESTRIAN SAFETY

ITEM (C) - SEE STREET, MEADOWBANK - RAISED PEDESTRIAN CROSSING

ITEM (D) - VIMIERA ROAD, MARSFIELD - PROPOSED CHANGES TO PARKING RESTRICTIONS

ITEM (E) - ROAD SAFETY UPDATE - ROAD SAFETY PROGRAMS

GENERAL BUSINESS

ITEM (A) ROWE LANE, EASTWOOD

SUBJECT: GIVE WAY HOLDING LINE AND PAINTED ISLANDS

ELECTORATE: RYDE
WARD: WEST
ROAD CLASS: NON-CLASSIFIED
OFFICER: L KUNG

Traffic Committee Members are required to advise whether they have any pecuniary or non-pecuniary interest with regards to the item discussed below.

PROPOSAL

Council is proposing to install the following measures at the intersection of Railway Parade and Rowe Lane, Eastwood, to assist with improving traffic safety at this location:

- “GIVE WAY” sign and holding line.
- Painted Islands.
- 5m long double barrier lines.

Figure 1 shows the location of the proposed works.



Figure 1: Location Map.

DISCUSSION

The intersection of Railway Parade and Rowe Lane is located directly opposite Eastwood Railway Station. The buildings along both sides of Rowe Lane restrict the sightline afforded to exiting drivers from Rowe Lane onto Railway Parade as evident in **Figure 2**.



Figure 2: Intersection of Railway Parade and Rowe Lane, Eastwood.

Council is proposing to provide additional signage and linemarking at the intersection of Rowe Lane and Railway Parade to improve safety and sightlines for drivers exiting Rowe Lane onto Railway Parade. These safety measures include:

- The installation of painted islands on Railway Parade on either side of Rowe Lane.
- The installation of “GIVE WAY” sign and holding line approximately 1.7m from the face of the kerb.
- 5m long double barrier lines

Please refer to **Figure 3** for extent of the proposed works.

There is no loss of on-street parking associated with the proposed works. These safety measures also reinforce existing road rules being traffic exiting from Rowe Lane (minor road) must Give Way to traffic on Railway Parade. Further, these measures are recognised as effective road safety treatments under the Australian Government Black Spot Program guidelines.

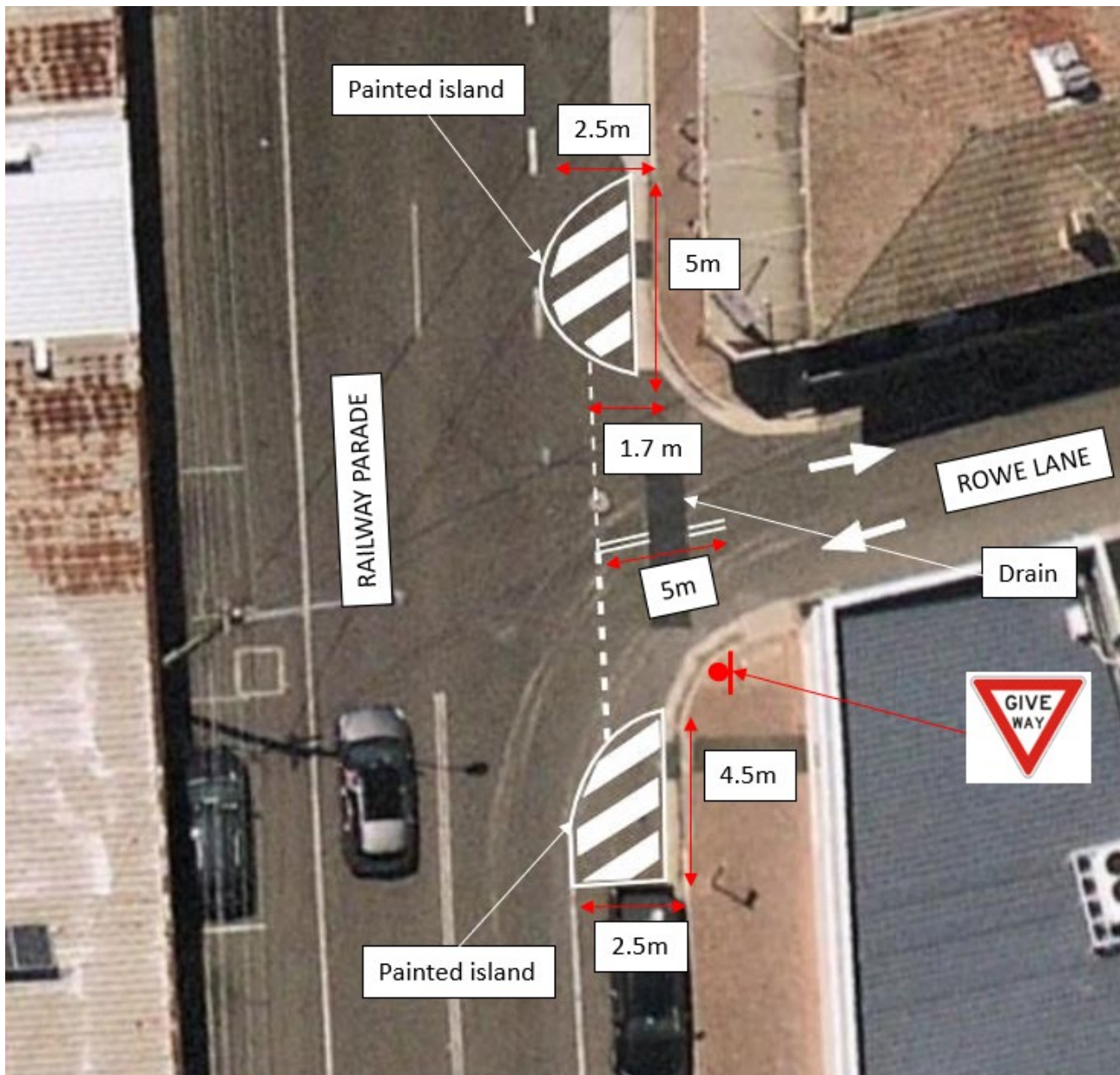


Figure 3: Proposed Changes.

COMMUNITY CONSULTATION

The proposed changes will have no impact on surrounding businesses or residents. As such, community consultation was not considered to be required.

RECOMMENDATION

The Ryde Traffic Committee recommends that the following measures be installed at the intersection of Railway Parade and Rowe Lane, Eastwood:

- Painted islands on Railway Parade on either side of Rowe Lane.
- “GIVE WAY” sign and holding line approximately 1.7m from the face of the kerb.
- The installation of 5m long double barrier lines.

ITEM (B) CHARLES STREET, PUTNEY**SUBJECT: PEDESTRIAN SAFETY**

ELECTORATE: RYDE
WARD: EAST
ROAD CLASS: UNCLASSIFIED
OFFICER: K WELLS

Traffic Committee Members are required to advise whether they have any pecuniary or non-pecuniary interest with regards to the item discussed below.

PROPOSAL

Council is proposing and seeking in principle approval for the below recommended alterations to the road environment at the roundabout controlled intersection of Charles Street and Parry Street, Putney.

- a) The roundabout device at the intersection of Charles Street and Parry Street be reconstructed to incorporate a raised central island (subject to swept path analysis for a 12.5 metres long heavy rigid vehicle).
- b) The splitter islands be reconstructed into concrete islands, subject to a design incorporating swept paths of vehicles.
- c) Additional roundabout warning signs be installed on the reconstructed islands.
- d) The existing at-grade threshold on Charles Street be reconstructed as a raised threshold.
- e) Traffic calming devices be installed on Charles Street, north of Parry Street, and on Parry Street, east of Charles Street.
- f) The abovementioned recommendations be developed subject to the availability of funds and in accordance with Transport for NSW (TfNSW) Technical Directions.

Figure 1 shows the location of the proposed works.

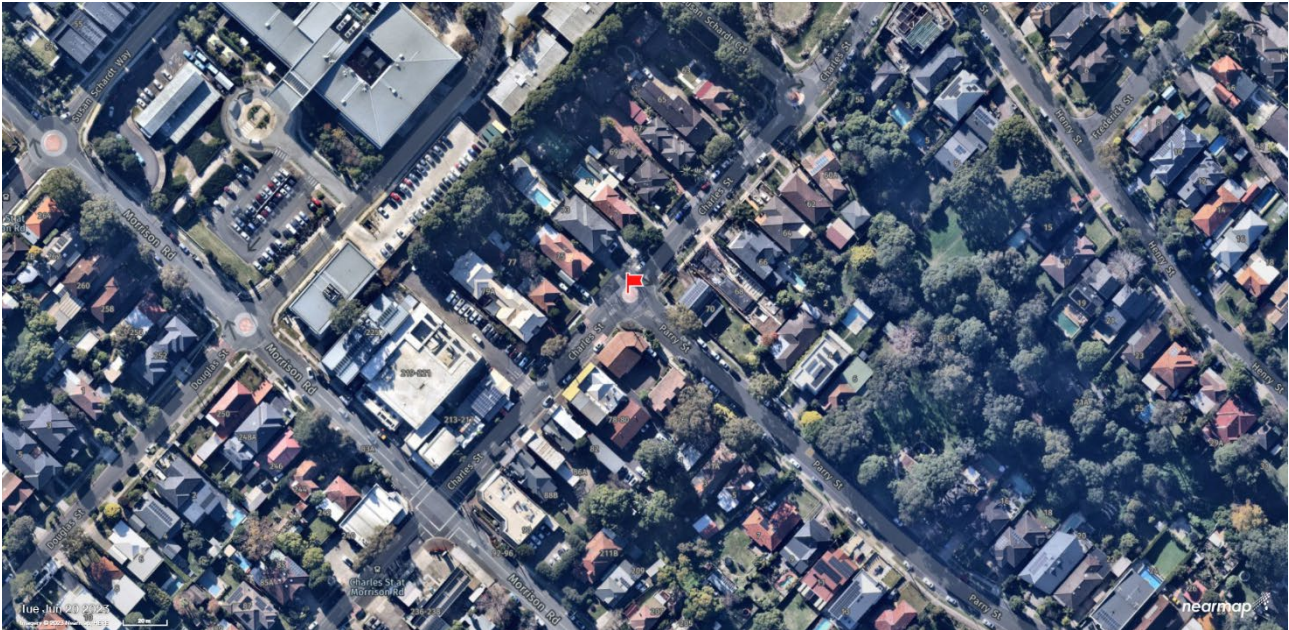


Figure 1: Location Map.

DISCUSSION

At the meeting held on 27 September 2022 Council resolved to investigate pedestrian safety on Charles Street near the intersection of Parry Street, Putney.

After receiving an assessment of this site from an independent road safety auditor, Council is now seeking to further develop the recommendations from the road safety audit.

The audit assessed pedestrian amenity and safety as well as the general operation of the roundabout. The overall finding is that the roundabout is not performing the function for which it was designed and requires remedial works to be made effective. This will require alteration to several elements of the intersection treatment and the addition of new devices on the approaches.

The roundabout needs to be reconstructed with a raised central island to prevent vehicles travelling over the apron without horizontal deflection. This will be subject to a satisfactory swept path analysis for 12.5m long heavy rigid vehicle.

The painted islands on the approach need to be replaced with concrete islands to allow for the positioning of additional signs, and to create a visual clue for motorists to identify the road environment.

Additional speed mitigation measures in the form of speed cushions and thresholds are recommended to lower approach speeds into the intersection. Please refer to **Figure 2** for details.



Figure 2: Proposed Changes.

FUNDING

No funding is available for this project at this stage. To install these measures, Council will seek funding opportunities through external grant programs such as the Australian Government funding Programs for 2023 - 24 financial year.

COMMUNITY CONSULTATION

Council will consult with affected residents and businesses following completion of the detailed design of the proposed works.

RECOMMENDATION

The Ryde Traffic Committee recommends that:

- The roundabout device at the intersection of Charles Street and Parry Street be reconstructed to incorporate a raised central island (subject to swept path analysis for a 12.5 metres long heavy rigid vehicle).
- The splitter islands be reconstructed into concrete islands, subject to a design incorporating swept paths of vehicles.
- Additional roundabout warning signs be installed on the reconstructed islands.
- The existing at-grade threshold on Charles Street be reconstructed as a raised threshold.



- e) Traffic Calming devices be installed on Charles Street, north of Parry Street, and on Parry Street, east of Charles Street.
- f) The abovementioned recommendations be developed subject to the availability of funds and in accordance with Transport for NSW (TfNSW) Technical Directions.

ITEM (C) **SEE STREET, MEADOWBANK**

SUBJECT: **RAISED PEDESTRIAN CROSSING**

ELECTORATE: RYDE

WARD: CENTRAL

ROAD CLASS: NON-CLASSIFIED

OFFICER: L KUNG

Traffic Committee Members are required to advise whether they have any pecuniary or non-pecuniary interest about the item discussed below.

PROPOSAL

Council is proposing to install a raised pedestrian crossing on See Street to the South of Stone Street, Meadowbank.

Figure 1 shows the location of the pedestrian crossing.



Figure 1: Location Map.

DISCUSSION

With the relocation of Meadowbank Public School and Marsden High School to the Meadowbank Education and Employment Precinct (MEEP), there has been a significant increase in volume of vehicles along See Street during School Zone times and the number of pedestrians crossing See Street near Angas Street and Stone Street.

Following requests from the NSW Police, Meadowbank Public School, Marsden High School and TAFE, Council is proposing to install a pedestrian crossing to improve pedestrian safety and connectivity in the area. The proposed location is consistent with the desired path of travel for students walking to and from the various schools within MEEP.

The raised pedestrian crossing will also act as a traffic calming device to discourage speeding along See Street, particularly during school zone periods. This pedestrian facility will further support and encourage active modes of travel to and from school.

Transport for NSW Technical Directions requires statutory No Stopping parking restrictions on the approach and departure side of the crossing. In this regard, the proposed raised pedestrian crossing will result in the loss of four (4) on-street parking spaces on the western (TAFE) side and one (1) on the eastern side of See Street.

Please refer to concept design in **Figure 2**. The proposed location of the pedestrian crossing is approximate and may vary (to the south) subject to the detailed design and site surveys. The detail design and construction of the facility is subjected to funding being allocated.



Figure 2: Proposed Changes.

FUNDING

No funding is available for this project at this stage. Council will seek funding opportunities through external grant programs such as the Australian Government funding Programs for 2023 - 24 financial year.

CONSULTATION

Consultation letters were distributed to the following properties shown in **Figure 3** below, allowing two (2) weeks for feedback. This included surrounding residents, the Italian Bilingual School, Little Stars Kindergarten and Meadowbank Scout Hall at 2B Angas Street. A total of fifteen (15) letters were distributed and one (1) objection was received.

The objection raised by the resident was concerned about the noise associated with the raised platform and the proximity to his property. However, the resident agreed that a pedestrian crossing is required on See Street to improve the safety for students crossing this road. The resident's feedback above will be considered in the detailed design.

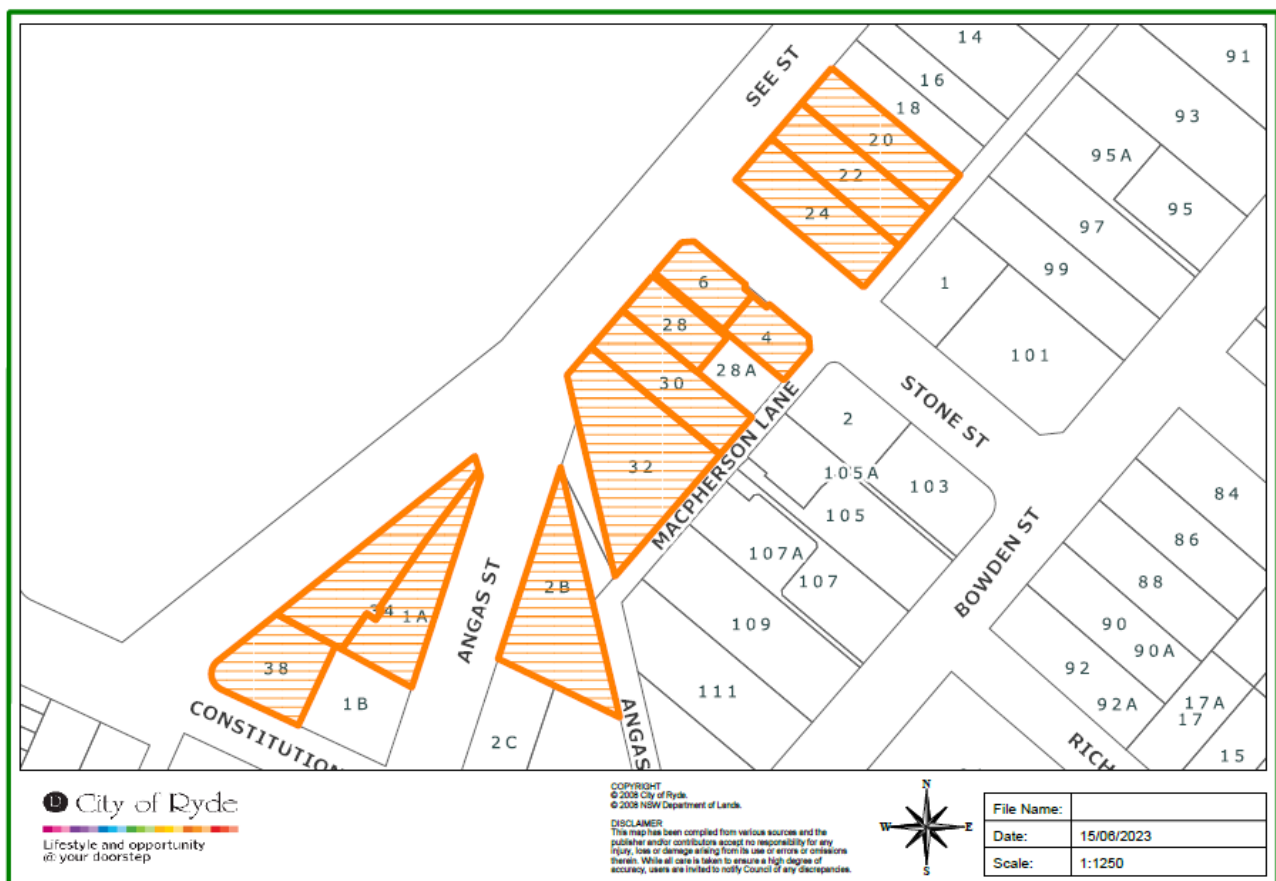


Figure 3: Consultation Area.

RECOMMENDATION

The Ryde Traffic Committee recommends that:

- a) A raised pedestrian crossing be installed (subject to availability of funds) on See Street to the South of Stone Street, Meadowbank.
- b) The pedestrian crossing be installed in accordance with the TfNSW Technical Directions and other relevant standards.

ITEM (D)	VIMIERA ROAD, MARSFIELD
SUBJECT:	PROPOSED CHANGES TO PARKING RESTRICTIONS
ELECTORATE:	RYDE
WARD:	WEST
ROAD CLASS:	NON-CLASSIFIED
OFFICER:	I SHAIK

Traffic Committee Members are required to advise whether they have any pecuniary or non-pecuniary interest with regards to the item discussed below.

PROPOSAL

Council is proposing to install 50m long "NO PARKING 08:00 AM-09:30 AM – SCHOOL DAYS" on the western side of Vimiera Road approximately 50m north of Epping Road outside of property nos. 213 and 215 Vimiera Road, Marsfield.



Figure 1: Location Map.

DISCUSSION

Council has received requests from Epping Boys High School, parents, and the NSW Police regarding a lack of drop-off and pick-up opportunities for students during the morning peak period near the school. This has caused parents and caregivers to perform illegal parking manoeuvres such as double parking and blocking through traffic which results in congestion and safety issues along Vimiera Road during the morning peak period.

To facilitate safe and efficient drop-off and pick-up of students near the school, Council is proposing to introduce 50m long "NO PARKING 08:00 AM-09:30 AM - SCHOOL DAYS" at the location shown in **Figure 2**.

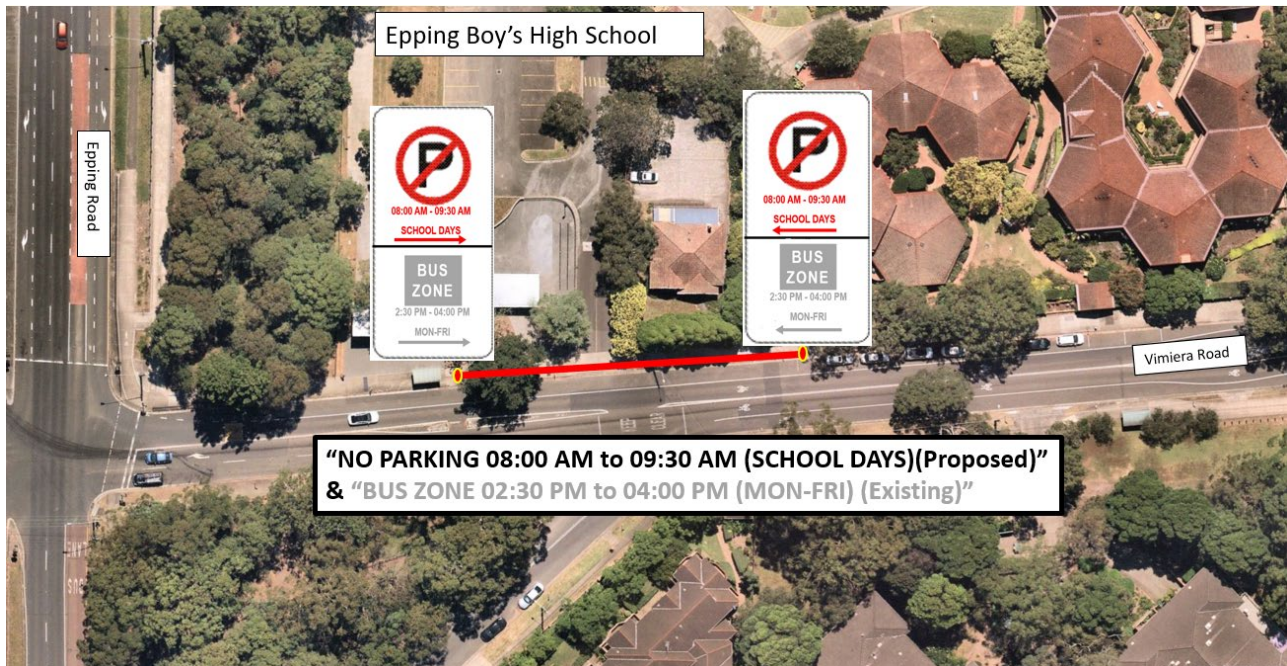


Figure 2: Proposed Changes.

COMMUNITY CONSULTATION

Council consulted with the properties shown in **Figure 3**. No objections were received from the residents and Busways regarding the proposed changes. The NSW Police and Epping Boys High School has supported this proposal.

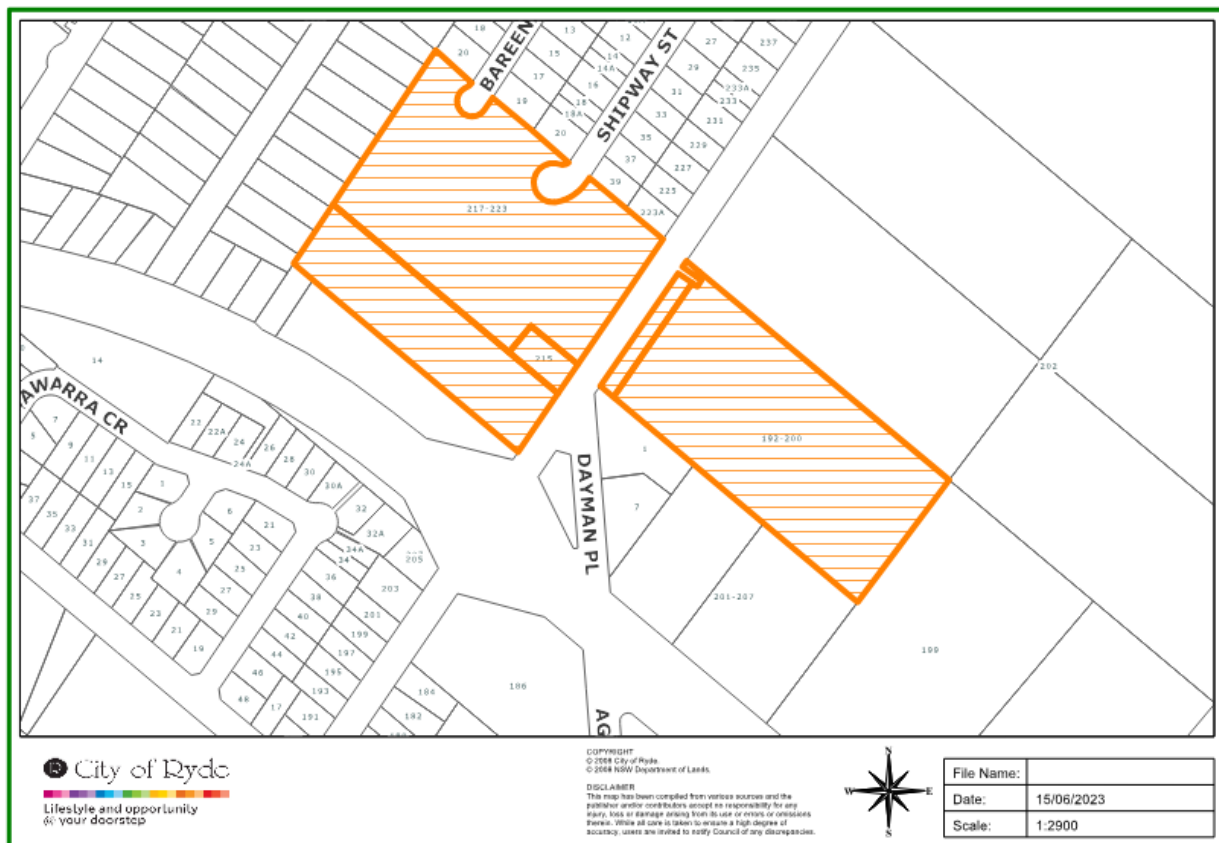


Figure 3: Consultation Area.

RECOMMENDATION

The Ryde Traffic Committee recommends that:

- 50m long "NO PARKING 08:00 AM-09:30 AM – SCHOOL DAYS" zone be installed on the western side of Vimiera Road approximately 50m north of Epping Road outside of property nos. 213 and 215 Vimiera Road, Marsfield.

ITEM (E)	ROAD SAFETY UPDATE
SUBJECT:	ROAD SAFETY PROGRAMS
ELECTORATE:	RYDE / LANE COVE
WARD:	ALL
OFFICER:	L PEARS

Traffic Committee Members are required to advise whether they have any pecuniary or non-pecuniary interest with regards to the items discussed below.

TRANSPORT FOR NEW SOUTH WALES (TfNSW) FUNDED PROGRAMS

Final reports and invoices for the 2022-2023 financial year programs have been completed. Council is waiting for confirmation of funding and programs for the 2023-2024 financial year.

COUNCIL FUNDED PROGRAMS

Police/Council Road Safety Awareness Program

Council, Ryde Police Area Command, and the Local Highway Patrol held a road safety information day at Eastwood Plaza on Wednesday 12 July. Staff and Police engaged with the community and provided road safety information and resources in Chinese and Korean.

Council and Police will also hold a road safety information stall at the upcoming Macquarie University Kickstart week 17-25 July (mid-year student orientation) targeting young drivers and international students.

Council is also supporting the police road safety engagement program at Ryde and Meadowbank TAFE, with two upcoming presentations in July.

Community Engagement

A stall was held in partnership with Bike North at the Sustainability Festival to promote safe cycling on the cycleways and shared user paths in the City of Ryde. Attendees were encouraged to cycle to the event to receive a cycling resource bag with reflective slap bands, lights, a reflective waterproof backpack cover and other maps and safety items. 48 free bike checks were offered by a bike mechanic and around 30 bikes made use of the bike parking area.

Road safety information stalls were also held at the Neighbour Day event at Lachlan's Line and the Refuge Week Community Expo. Information was provided in a range of languages targeting families, cyclists, and pedestrians. Both events were very successful for one-on-one engagement with members of the community, with people taking the opportunity to ask questions about road rules, licensing, and cycle routes.

School Zone Safety Program

Pedestrian crossings have been repainted on Winbourne Street outside Ermington Public School, and on Morrison Road at the corner of Linsley Street near Gladesville Public School to improve pedestrian safety for families heading to and from these schools.

RECOMMENDATION

The Ryde Traffic Committee recommends that:

- a) The Road Safety report be received and noted.