

---

**NOTICE OF MEETING**

---

**You are advised of the following meeting:**

**Ryde Traffic Committee Meeting**

**Thursday, 23 November 2023**

**Meeting Room Landmark, Level 1, North Ryde Office  
&  
MS Teams**

**MEMBERS**

City of Ryde (Chair) ..... Senior Coordinator Traffic Operations (for Mgr. Traffic Services)  
Transport for New South Wales..... Network & Safety Officer, Central River City  
NSW Police Force .....Ryde Local Area Command  
Member for Ryde .....The Hon. Jordan Lane MP  
Member for Lane Cove .....The Hon. A Roberts MP

**ADVISORS**

Busways .....Western Region

**MEETING CONVENOR**

Muddasir Ilyas – Senior Coordinator - Traffic Operations  
**MuddasirI@Ryde.nsw.gov.au**

## **NOTICE OF BUSINESS**

### **APOLOGIES**

### **CONFIRMATION OF PREVIOUS MINUTES**

### **AGENDA ITEMS**

**ITEM (A) - WASTE COLLECTION – VARIOUS STREETS - NO PARKING -  
WASTE VEHICLES EXCEPTED**

**ITEM (B) - ELLIOT AVENUE, EAST RYDE – NO STOPPING**

**ITEM (C) - FARRINGTON PARADE, NORTH RYDE - PEDESTRIAN REFUGE – KERB  
REALIGNMENT**

**ITEM (D) - PARKES STREET, WEST RYDE - KERB BLISTERS**

**ITEM (E) – CHATHAM ROAD, WEST PARADE & HILLVIEW ROAD WEST RYDE &  
EASTWOOD - TRAFFIC CALMING**

**ITEM (F) - RYDE TRAFFIC COMMITTEE - 2024 MEETING DATES**

**ITEM (G) - ROAD SAFETY UPDATE - ROAD SAFETY PROGRAMS**

### **GENERAL BUSINESS**

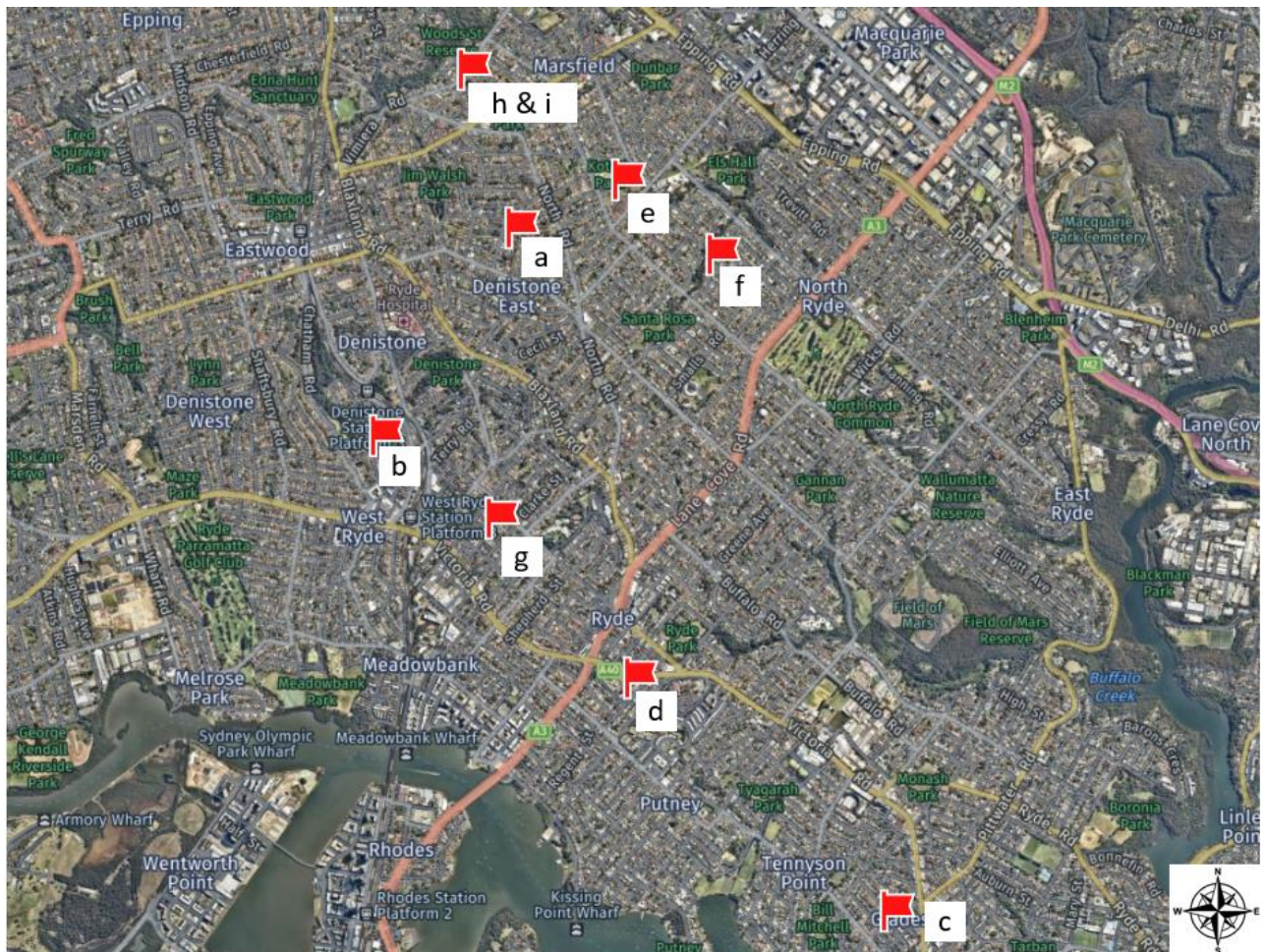
<b>ITEM (A)</b>	<b>WASTE COLLECTION – VARIOUS STREETS</b>
<b>SUBJECT:</b>	<b>NO PARKING – WASTE VEHICLES EXCEPTED</b>
ELECTORATE:	RYDE / LANE COVE
WARD:	ALL
ROAD CLASS:	NON-CLASSIFIED
OFFICER:	S ALI

## PROPOSAL

Council is proposing to install the following parking restrictions for waste collection vehicles on the streets mentioned below.

**Figure 1** shows the location of the proposed changes.

- a) “NO PARKING 5AM-11AM THURSDAY WASTE VEHICLES EXCEPTED” at the cul-de-sac on Dawes Crescent, Eastwood.
- b) 5m long “NO PARKING 5AM-11AM WEDNESDAY WASTE VEHICLES EXCEPTED” restriction at the frontage of 32 Anthony Road, West Ryde.
- c) 6.5m long “NO PARKING 5AM-11AM TUESDAY WASTE VEHICLES EXCEPTED” restriction on Blair Street frontage of 18-20 Ross Street, Gladesville.
- d) 16m long “NO PARKING 5AM-11AM MONDAY WASTE VEHICLE EXCEPTED” restriction at the frontage of 15-17 Gladstone Avenue, Ryde.
- e) “NO PARKING 5AM-11AM THURSDAY WASTE VEHICLE EXCEPTED” at the cul-de-sac on Fay Place, Marsfield.
- f) “NO PARKING 5AM-11AM FRIDAY WASTE VEHICLE EXCEPTED” at the cul-de-sac on Flinders Road, North Ryde.
- g) 14m long “NO PARKING 5AM-11AM TUESDAY WASTE VEHICLE EXCEPTED” restriction at the frontage of 58-60 Falconer Street, West Ryde.
- h) “NO PARKING: 5AM-11AM THURSDAY, WASTE VEHICLES EXCEPTED” at the two (2) cul-de-sacs on Deborah Place, Eastwood.
- i) “NO STOPPING” zones at the property frontage of 2 and 17 Deborah Place, Eastwood.



**Figure 1: Location Plan**

## DISCUSSION

Under the Local Government Act 1993, Council is responsible for waste collection services within their area. In addition, Council must adhere to the strict Work, Health, and Safety obligations towards contractors as stipulated by the Work, Health, and Safety Act 2011.

The streets identified in the previous section of this report have characteristics such as narrow carriageway widths, road bends, steep gradients and small cul-de-sacs, which pose significant challenges for Council's waste vehicle to manoeuvre. These issues are further exacerbated by parked vehicles on both sides of narrow streets that obstruct access for waste trucks during collection days, affecting bin collection. Further, the inability of trucks to turn around in small cul-de-sacs forces them to reverse out, thereby creating potential safety hazards.

Council has also received representation from local residents, drivers of Council's waste collection vehicle and other stakeholders requesting consideration be given to parking restrictions being introduced on the following streets to improve the safety and efficiency of waste vehicle manoeuvring:

- a) Dawes Crescent, Eastwood
- b) Anthony Road, West Ryde
- c) Blair Street, Gladesville
- d) Gladstone Avenue, Ryde
- e) Fay Place, Marsfield
- f) Flinders Road, North Ryde
- g) Falconer Street, West Ryde
- h) Deborah Place, Eastwood

These parking restrictions are proposed to apply only during the waste collection period and are generally installed on one side of the street to minimise parking impacts on surround residents. In some cases, these parking controls have been installed to provide space for bins to be stored on waste collection days.

#### **a) Dawes Crescent, Eastwood**

It is imperative to note that waste collection vehicles encounter significant challenges accessing the cul-de-sac of Dawes Crescent whenever cars are parked around the turning area. Consequently, the waste vehicle is often forced to reverse back along Dawes Crescent to Grove Street. This situation represents a safety risk and affects bin collection.

To address this safety concern and facilitate the waste collection, Council is proposing to introduce “NO PARKING 5AM-11AM THURSDAY WASTE VEHICLES EXCEPTED” around the cul-de-sac on Dawes Crescent.

Please refer to **Figure 2** for the extent of proposed parking restrictions.



**Figure 2: Proposed parking changes - Dawes Crescent, Eastwood**

## b) Anthony Road, West Ryde

There is an existing multi-dwelling residential development containing three(3) dwellings on the western side of Anthony Road, with a street address of no. 32 – 34 Anthony Road, West Ryde. Currently, the kerb space adjacent to the property frontage accommodates unrestricted parking, which impacts on the waste collection process.

To improve the efficiency of the waste collection process outside of no. 32 - 34 Anthony Road, Council is proposing to introduce a 5m long “NO PARKING 5AM-11AM WEDNESDAY WASTE VEHICLES EXPECTED” zone at the frontage of 32 Anthony Road, West Ryde.

Please refer to **Figure 3** for the extent of proposed parking restrictions.



**Figure 3: Proposed parking changes- Anthony Road, West Ryde**

## c) Blair Street, Gladesville

There is an existing multi-dwelling residential development containing sixteen(16) dwellings on the eastern side of Blair Street, with a street address of no. 18 – 20 Ross Street, Gladesville. Currently, the kerb space adjacent to the property frontage accommodates unrestricted parking, which impacts on the waste collection process.

To facilitate the waste collection at 18-20 Ross Street, Gladesville, Council is proposing to introduce 6.5m long “NO PARKING 5AM-11AM TUESDAY WASTE VEHICLES EXCEPTED” zone on Blair Street frontage of 18-20 Ross Street, Gladesville.

Please refer to **Figure 4** for the extent of proposed parking restrictions.



*Figure 4: Proposed parking changes - Blair Street, Gladesville*

#### **d) Gladstone Avenue, Ryde**

There is an existing multi-dwelling residential development containing seventeen (17) dwellings on the western side of Gladstone Avenue, with a street address of no. 15 – 17 Gladstone Avenue, Ryde. Currently, the kerb space adjacent to the property frontage accommodates unrestricted parking, which impacts on the waste collection process.

To facilitate the waste collection at this location, Council is proposing to install a 16m long “NO PARKING 5AM-11AM MONDAY WASTE VEHICLE EXCEPTED” zone at the frontage of 15-17 Gladstone Avenue, Ryde.

Please refer to **Figure 5** for the extent of proposed parking restrictions.



**Figure 5: Proposed parking changes-Gladstone Avenue, Ryde**

#### **e) Fay Place, Marsfield**

Vehicles have been observed to park around the cul-de-sac at the southern end of Fay Place, Marsfield. This affects the safety and efficiency of Council's waste vehicle turning around within the cul-de-sac. To improve the situation, Council is proposing to introduce "NO PARKING 5AM-11AM THURSDAY WASTE VEHICLES EXPECTED" around the cul-de-sac on Fay Place.

Please refer to **Figure 6** for the extent of proposed parking restrictions.



**Figure 6: Proposed parking changes – Fay Place, Marsfield**

#### f) Flinders Road, North Ryde

When vehicles have been parked around the cul-de-sacs, they restrict the movement of waste collection vehicles to collect the bins. This situation frequently leads to the waste collection vehicles failing to collect bins from properties in the cul-de-sacs on Flinders Road.

To facilitate the waste collection, Council is proposing to introduce **“NO PARKING 5AM-11AM FRIDAY WASTE VEHICLES EXCEPTED”** around the cul-de-sac on Fay Place.

Please refer to **Figure 7** for the extent of proposed parking restrictions.



*Figure 7: Proposed parking changes – Flinders Road, North Ryde*

#### g) Falconer Street, West Ryde

As part of the development at 58-60 Falconer Street, West Ryde, the waste-collection at the development was not possible because of on-site constraints and the nature of the driveway.

To facilitate the waste collection and improve safety, Council is proposing to introduce **“NO PARKING 5AM-11AM Tuesday WASTE VEHICLES EXCEPTED”** along the property frontage of 58-60 Falconer Street, West Ryde.

Please refer to **Figure 8** for the extent of proposed parking restrictions.



Figure 8: Proposed parking changes – Falconer Street, West Ryde

### h) Deborah Place, Eastwood

The carriageway width on Deborah Place is approximately 6.8m. Parked vehicles on both sides of Deborah Place and along its cul-de-sacs affects the manoeuvring of Council's waste vehicle. To improve the safety of manoeuvring and accessibility by Council's waste vehicles, Council is proposing to install "NO PARKING: 5AM-11AM THURS, WASTE VEHICLES EXPECTED" and "NO STOPPING" zones on Deborah Place at the locations shown in **Figure 9** below.



Figure 9: Proposed parking changes – Deborah Place, Eastwood

## COMMUNITY CONSULTATION

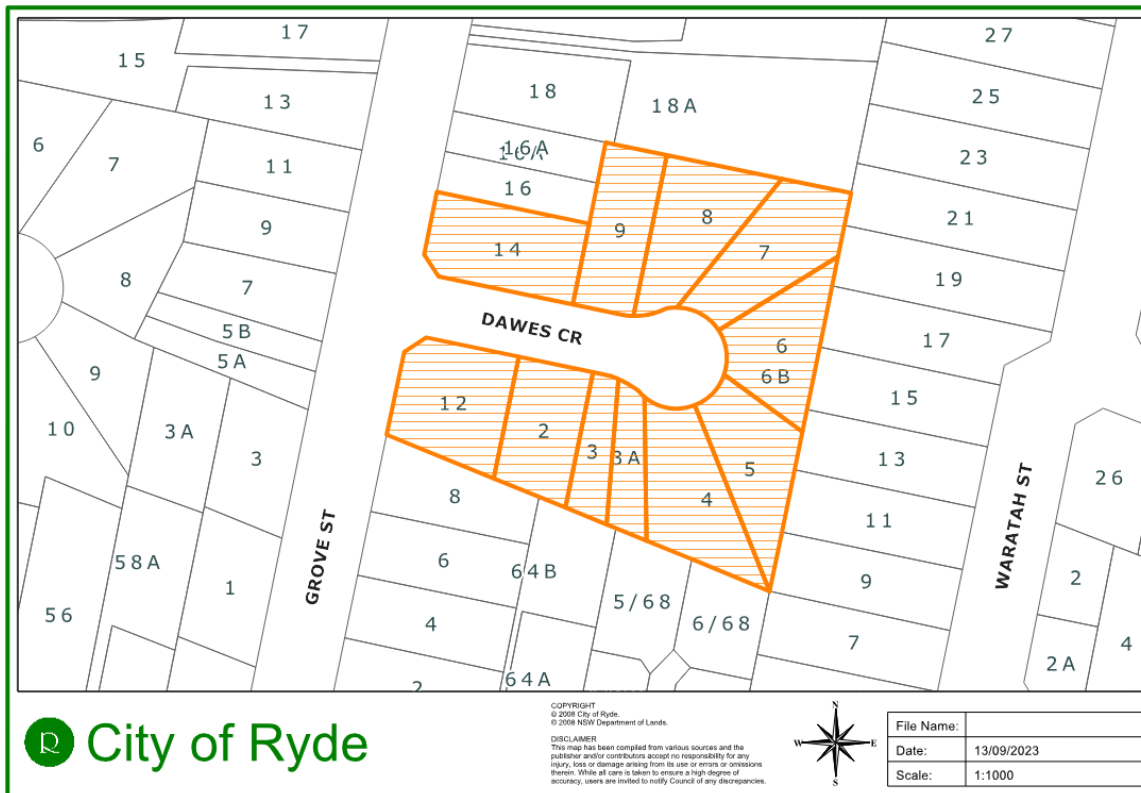
“Have Your Say” community consultation was conducted for two weeks in November 2023. Flyers and Letters were distributed to residents impacted by these parking restrictions. Doorknock surveys were carried out to the properties that have been directly impacted by these parking restrictions. **Figures 10 – 16** show the location of properties consulted. A dedicated webpage was also created on Council’s website, where residents were able to provide their feedback online. Summary of the public consultation results is provided in **Table 1** below.

Location	Response received	Supported	DO NOT support	Undecided	Not Specific
Dawes Crescent	7	6	–	–	1
Anthony Road	3	2	–	–	1
Blair Street	3	2	–	–	1
Gladstone Avenue	13	12	–	–	1
Fay Place	3	2	–	–	1
Flinders Road	6	4	–	–	1
Deborah Place	5	3	1	–	1

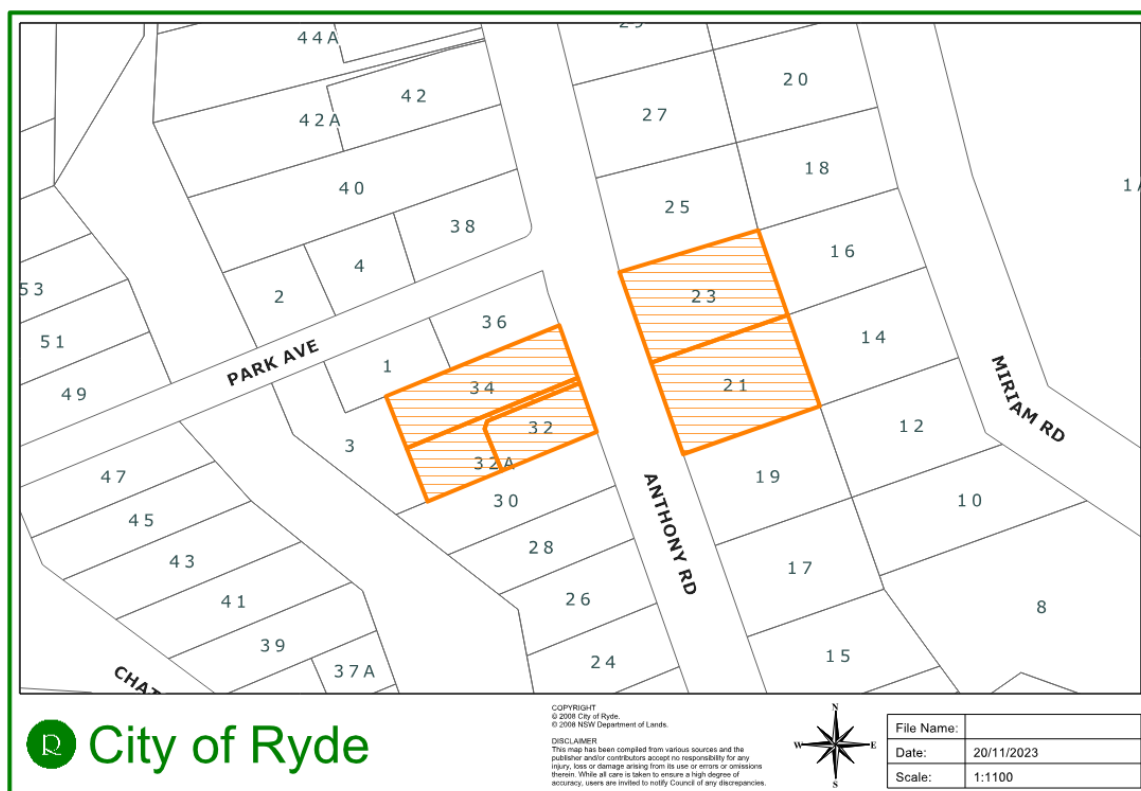
**Table 1: Summary of survey results**

Generally, Council received unanimous support for proposed parking changes on all streets except Deborah Place. One objection was received on the proposed parking restriction on Deborah Place which was related to concerns on the loss of on-street parking. Council has reached out to the resident and have resolved their concerns by reducing the length of the proposed “NO STOPPING” zones.

No community consultation was required for Falconer Street, West Ryde because the proposed changes are at the frontage of new development at 58-60 Falconer Street, West Ryde.



**Figure 10: Consultation area - Daves Crescent**



**Figure 11: Consultation area - Anthony Road**

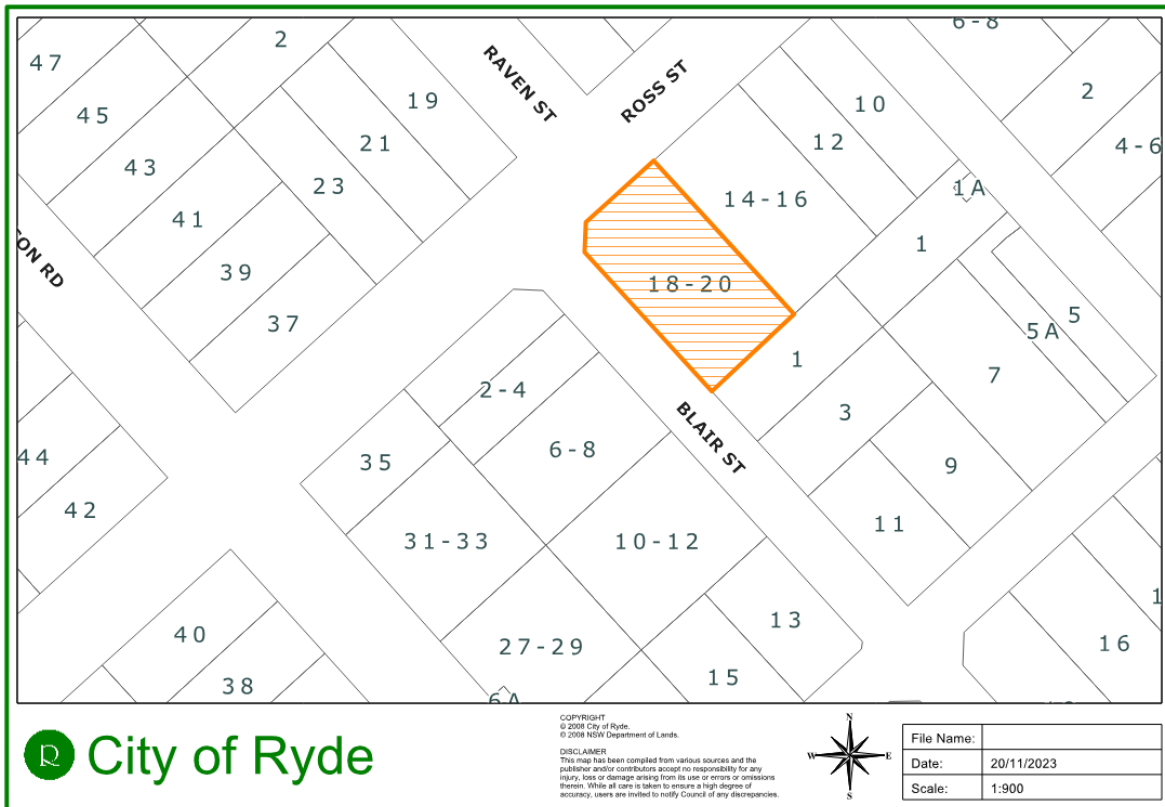


Figure 12: Consultation area - Blair Street

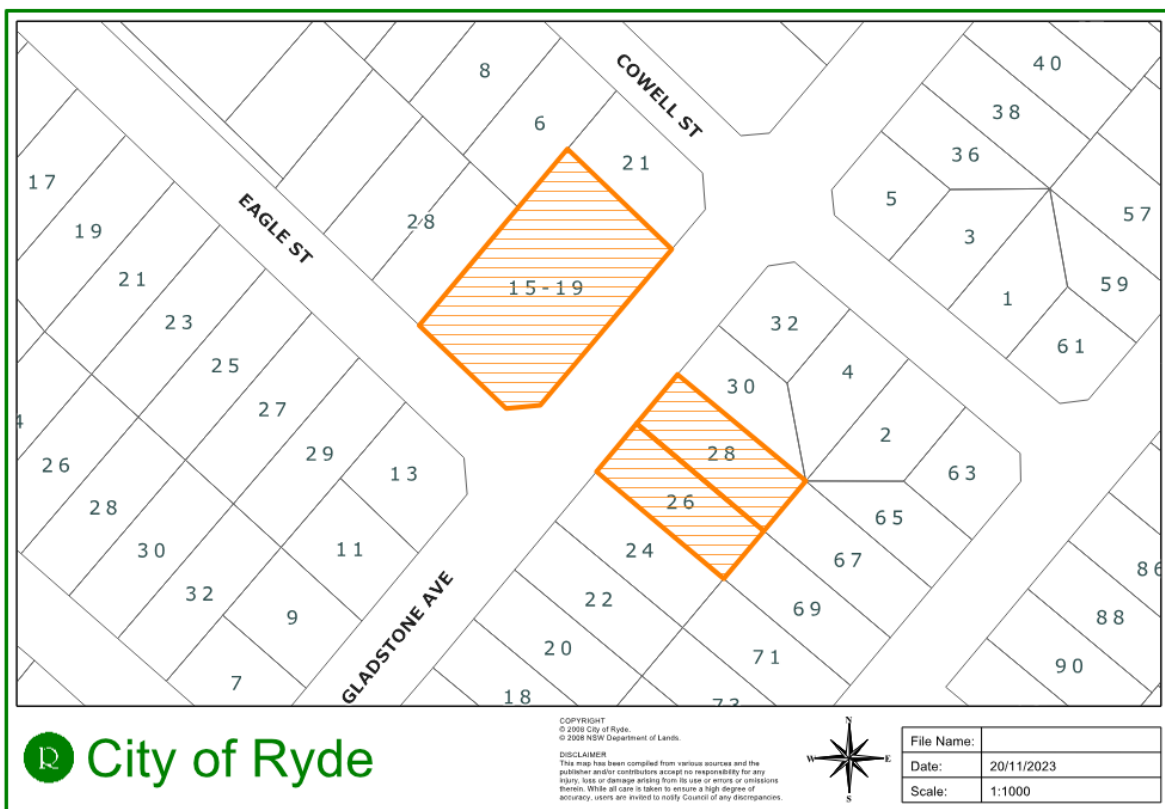
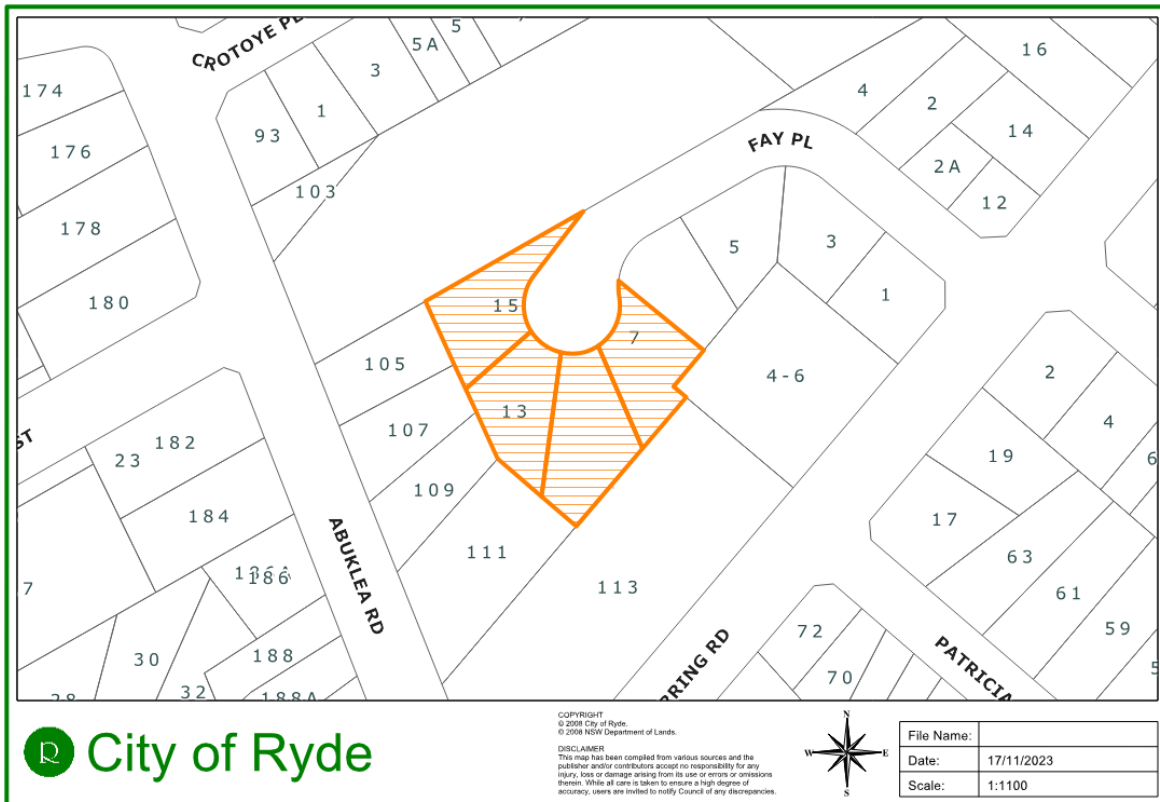
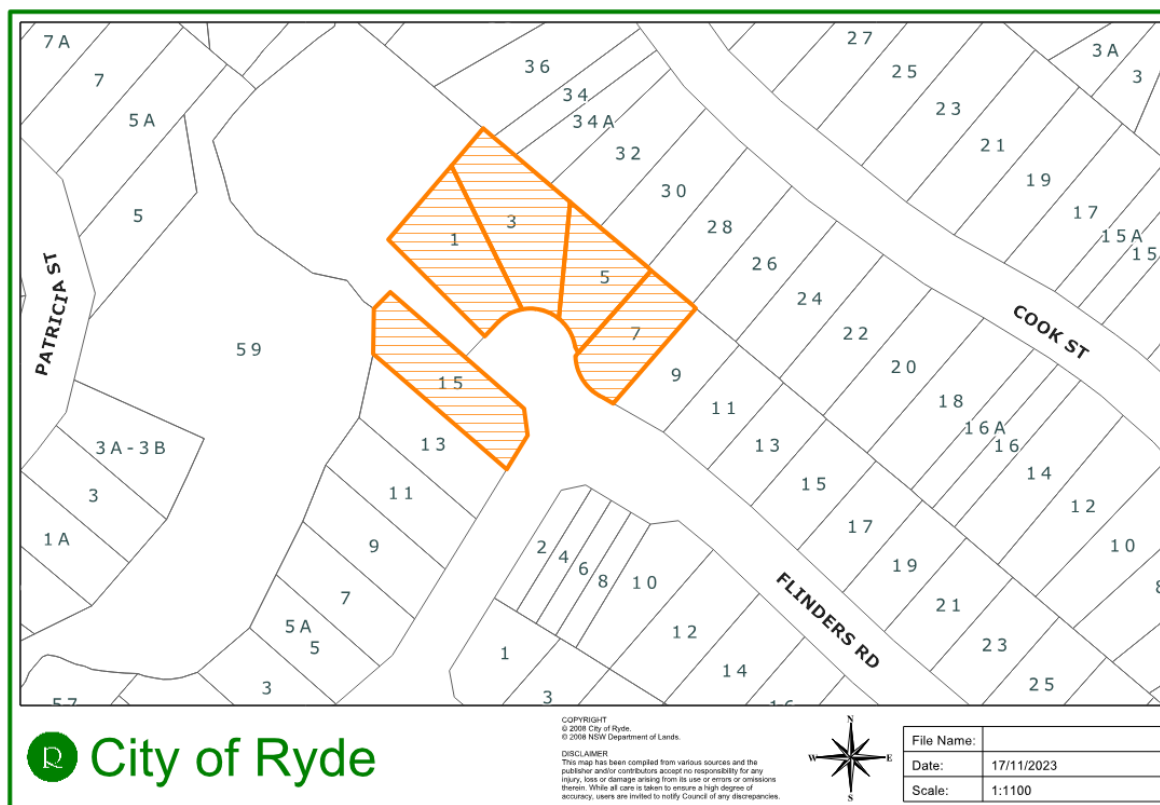


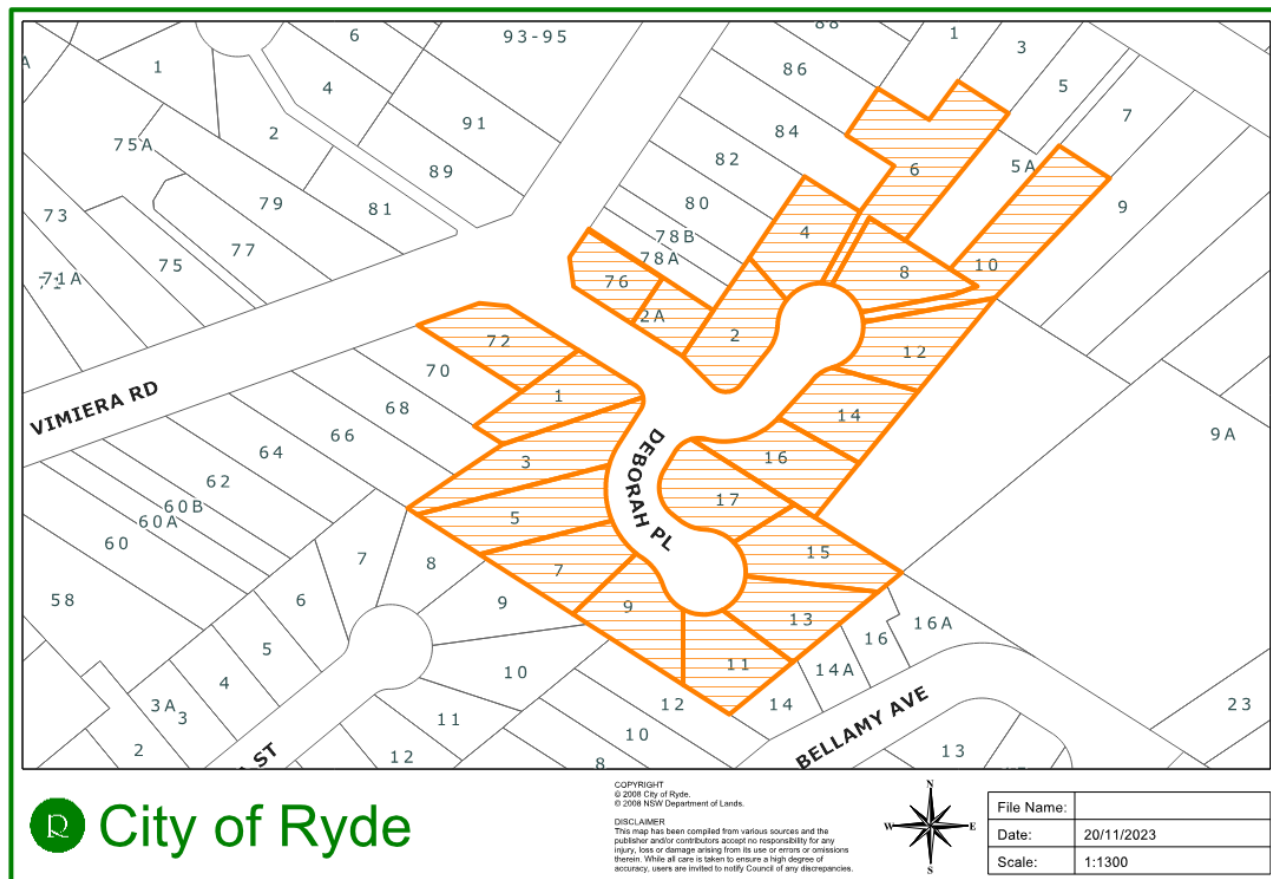
Figure 13: Consultation area - Gladstone Avenue



**Figure 14: Consultation area – Fay Place, Marsfield**



**Figure 15: Consultation area – Flinders Road, North Ryde**



**Figure 16: Consultation area – Deborah Place, Eastwood**

## RECOMMENDATION:

The Ryde Traffic Committee recommends that: -

- “NO PARKING 5AM-11AM THURSDAY WASTE VEHICLES EXCEPTED” restriction be installed at the cul-de-sac on Dawes Crescent, Eastwood.
- 5m long “NO PARKING 5AM-11AM WEDNESDAY WASTE VEHICLES EXCEPTED” restriction be installed at the frontage of 32-34 Anthony Road, West Ryde.
- 6.5m long “NO PARKING 5AM-11AM TUESDAY WASTE VEHICLES EXCEPTED” restriction be installed on Blair Street at the frontage of 18-20 Ross Street, Gladesville.
- 16m long “NO PARKING 5AM-11AM MONDAY WASTE VEHICLE EXCEPTED” restriction be installed at the frontage of 15-17 Gladstone Avenue, Ryde.
- “NO PARKING 5AM-11AM THURSDAY WASTE VEHICLE EXCEPTED” at the cul-de-sac on Fay Place, Marsfield.
- “NO PARKING 5AM-11AM FRIDAY WASTE VEHICLE EXCEPTED” restrictions be installed at the cul-de-sac on Flinders Road, North Ryde.
- 14m long “NO PARKING 5AM-11AM FRIDAY WASTE VEHICLE EXCEPTED” restriction be installed at the frontage of 58-60 Falconer Street, West Ryde.



- h) “NO PARKING: 5AM-11AM THURS, WASTE VEHICLES EXCEPTED” restriction be installed at the two cul-de-sacs on Deborah Place, Eastwood.
- i) “NO STOPPING” zones be installed at the property frontage of 2 and 17 Deborah Place, Eastwood.

**ITEM (B)                      ELLIOTT AVENUE, EAST RYDE**

**SUBJECT:                    NO STOPPING**

ELECTORATE:            LANE COVE  
WARD:                    EAST  
ROAD CLASS:            NON-CLASSIFIED  
OFFICER:                I SHAIK

Traffic Committee Members are required to advise whether they have any pecuniary or non-pecuniary interest about the item discussed below.

**PROPOSAL**

Council is proposing to install a 12m long "NO STOPPING" zone on the western side of Elliott Avenue between the driveway servicing no. 90 Elliot Avenue and existing statutory "NO STOPPING" zone.

**Figure 1** shows the location of the proposed "NO STOPPING" zone.



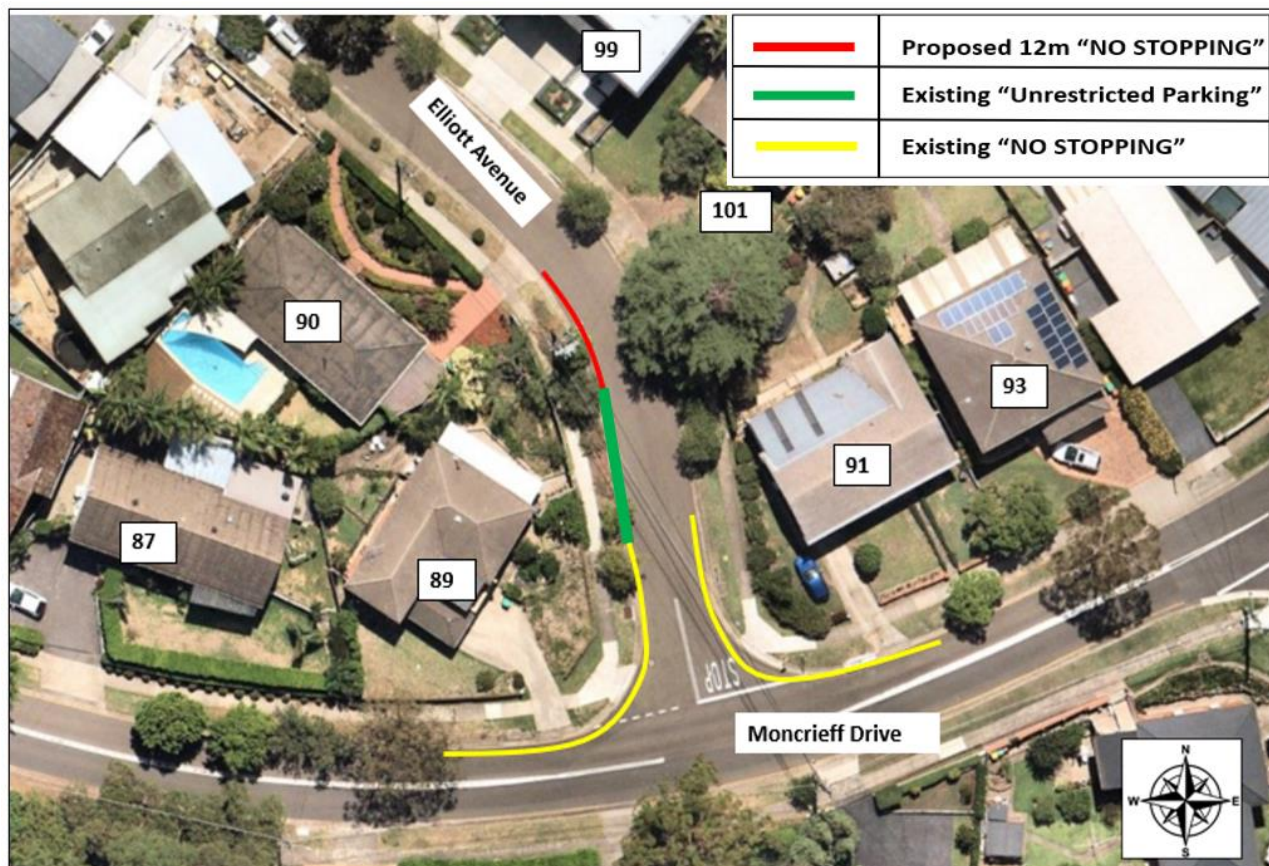
**Figure 1: Location Plan**

## DISCUSSION

When vehicles are parked at this location on Elliott Avenue, they restrict two-way traffic flow and reduce sight lines for oncoming vehicles.

To address this safety concern, Council is proposing to install a 12m long "NO STOPPING" zone on the western side of Elliott Avenue outside of 89 Moncrieff Drive.

Please refer to **Figure 2** below for more details.



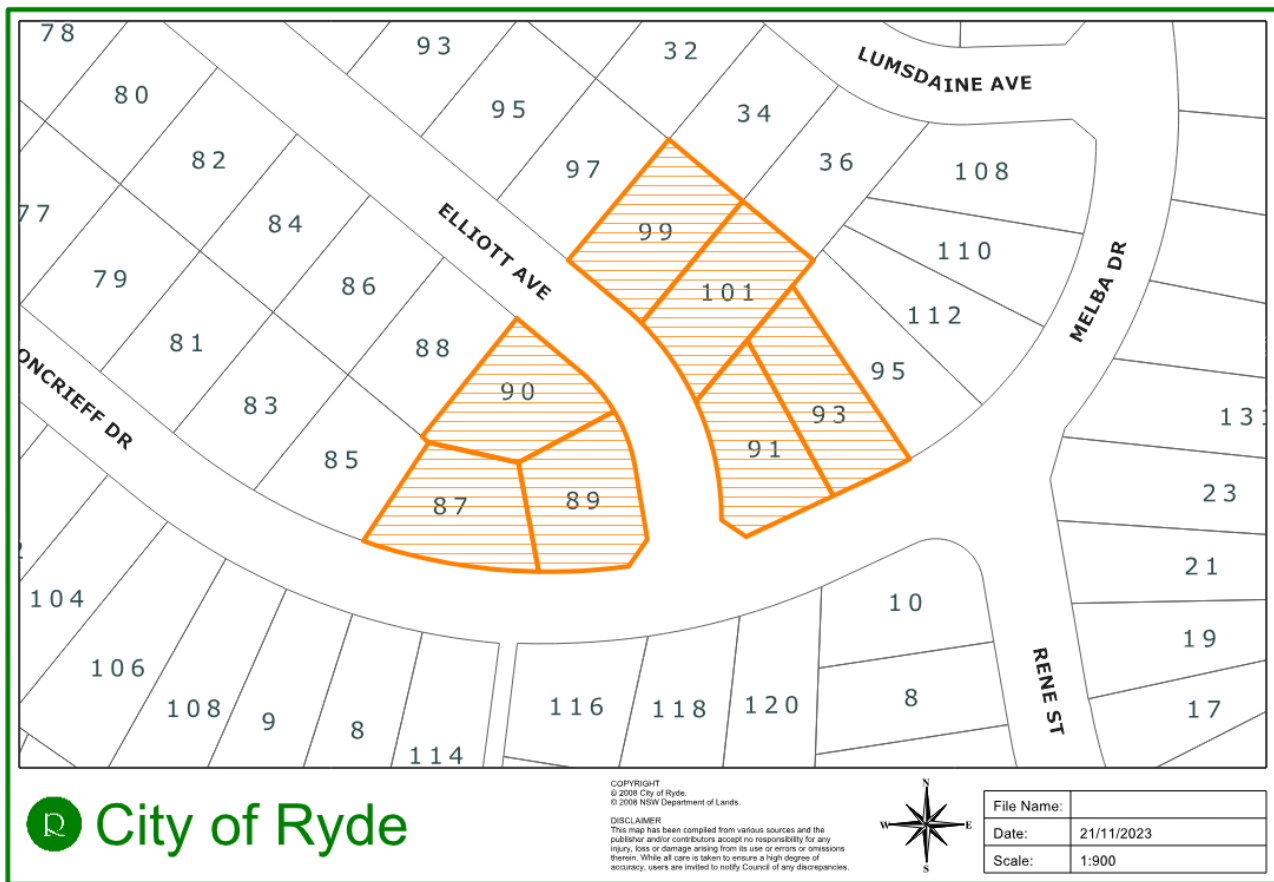
*Figure 2: Proposed "NO STOPPING" zone on Elliott Avenue, East Ryde.*

## CONSULTATION

Notification letters were distributed to the following seven (7) properties shown in **Figure 3** below, allowing two (2) weeks for feedback. No objections were received about the proposed parking restrictions.

**Figure 3** below shows the location of properties consulted.

## TRAFFIC CALMING



**Figure 3: Distribution map for community consultation.**

## RECOMMENDATION:

The Ryde Traffic Committee recommends that: -

- a) A 12m long "NO STOPPING" zone be installed on the western side of Elliott Avenue outside of 89 Moncrieff Drive, East Ryde.

<b>ITEM (C)</b>	<b>FARRINGTON PARADE, NORTH RYDE</b>
<b>SUBJECT:</b>	<b>PEDESTRIAN REFUGE – KERB REALIGNMENT</b>
<b>ELECTORATE:</b>	RYDE
<b>WARD:</b>	EAST
<b>ROAD CLASS:</b>	NON-CLASSIFIED
<b>OFFICER:</b>	K WELLS

Traffic Committee Members are required to advise whether they have any pecuniary or non-pecuniary interest about the item discussed below.

## PROPOSAL

Council is proposing to install the following measures at the intersection of Farrington Parade and Truscott Street, North Ryde:

- A pedestrian refuge (subject to availability of funds) on Farrington Parade, North Ryde, at the intersection of Truscott Street, as per Transport for NSW Technical Directions.
- Realignment of the intersection by kerb extensions to improve traffic conditions (subject to availability of funds).

**Figure 1** shows the location of the proposed pedestrian refuge.



**Figure 1: Location Plan**

## DISCUSSION

Council recently obtained funding as part of the NSW Active Transport Program for the construction of a continuous footpath along Truscott Street, between Coxs Road and Edmondson Street, North Ryde, to improve access to Truscott Street School.

An opportunity has been identified as part of this new pedestrian link project to incorporate a pedestrian refuge on Farrington Parade. This refuge will have a dual purpose of improving pedestrian safety and amenity, while providing localised traffic calming on Farrington Parade.

Similarly, this provides an opportunity to realign the intersection of Farrington Parade. This alignment is extremely poor by current standards with wide radius curves and excessive (12m) carriageway width. The current alignment of the road is shown in **Figure 2**.

Alteration to the kerb alignment will create a more direct pedestrian path, improve the traffic conditions, reduce ongoing pavement maintenance and allow for the retention of existing street trees.



*Figure 2 – Site Plan – Current conditions, Farrington Parade and Truscott Street, North Ryde*

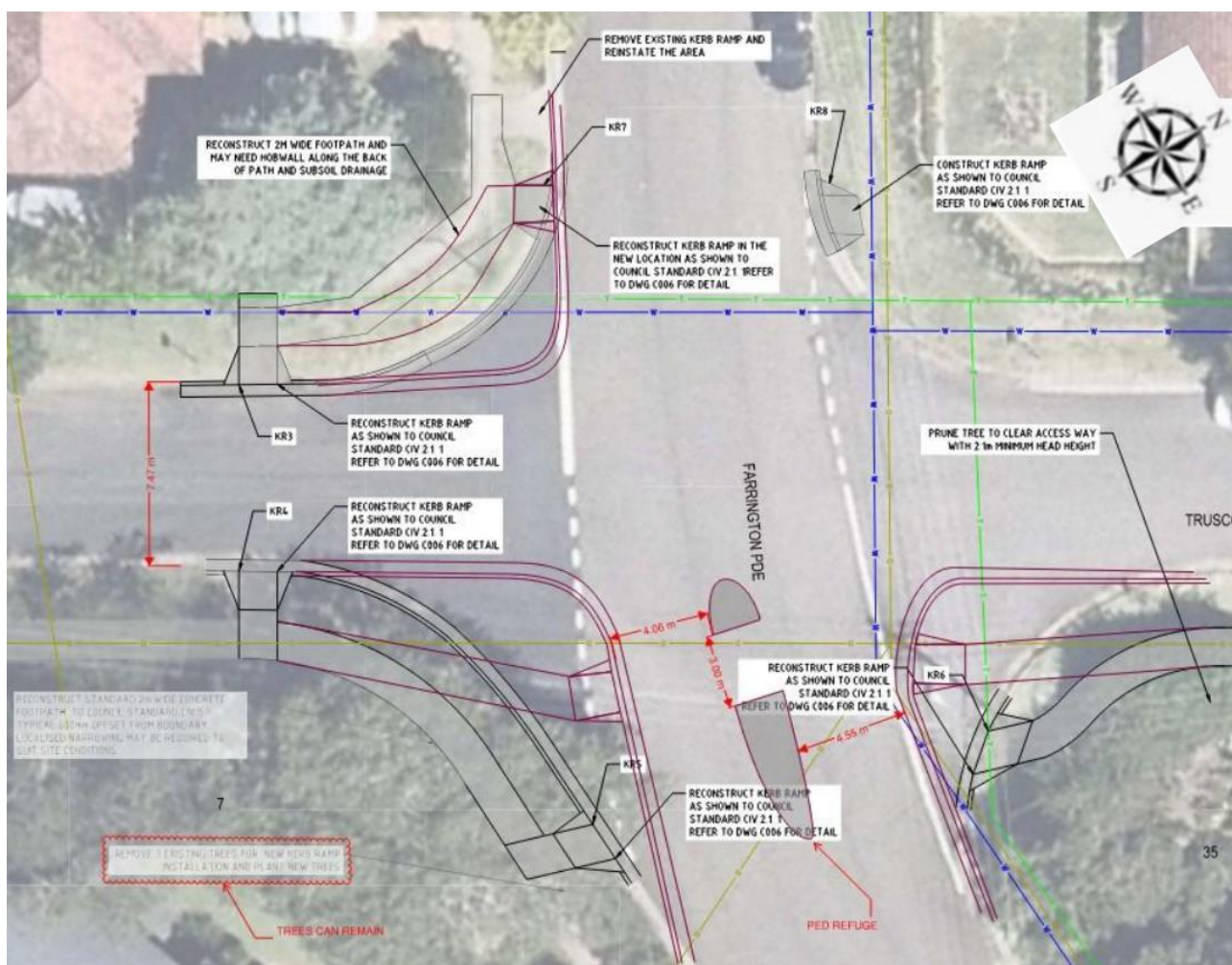
Please refer to concept design in **Figure 3** showing the proposed refuge location and the realignment of the kerb, in Red, with the initial concept shown in black.

## FUNDING

The footpath project has already been funded through a grant program, with construction to commence in the 23/24 financial year. If possible, the refuge island will be installed simultaneously with the footpath construction. The delivery of the pedestrian refuge component on Farrington Parade will be subject to availability of funds.

## CONSULTATION

This project does not affect access to abutting developments or results in loss of on-street parking. As such community consultation was not required. However, affected residents will be notified prior to the commencement of any construction activity.



**Figure 3 – Concept design of a pedestrian refuge and kerb realignment, Farrington Parade and Truscott Street.**

**RECOMMENDATION:**

The Ryde Traffic Committee recommends that: -

- a) A pedestrian refuge be installed (subject to availability of funds) on Farrington Parade, North Ryde, at the intersection of Truscott Street, as per Transport for NSW Technical Directions.
- b) The intersection of Truscott Street and Farrington Parade be realigned (subject to availability of funds) by kerb extensions to improve the traffic conditions.

**ITEM (D) PARKES STREET, WEST RYDE**

**SUBJECT: KERB BLISTERS**

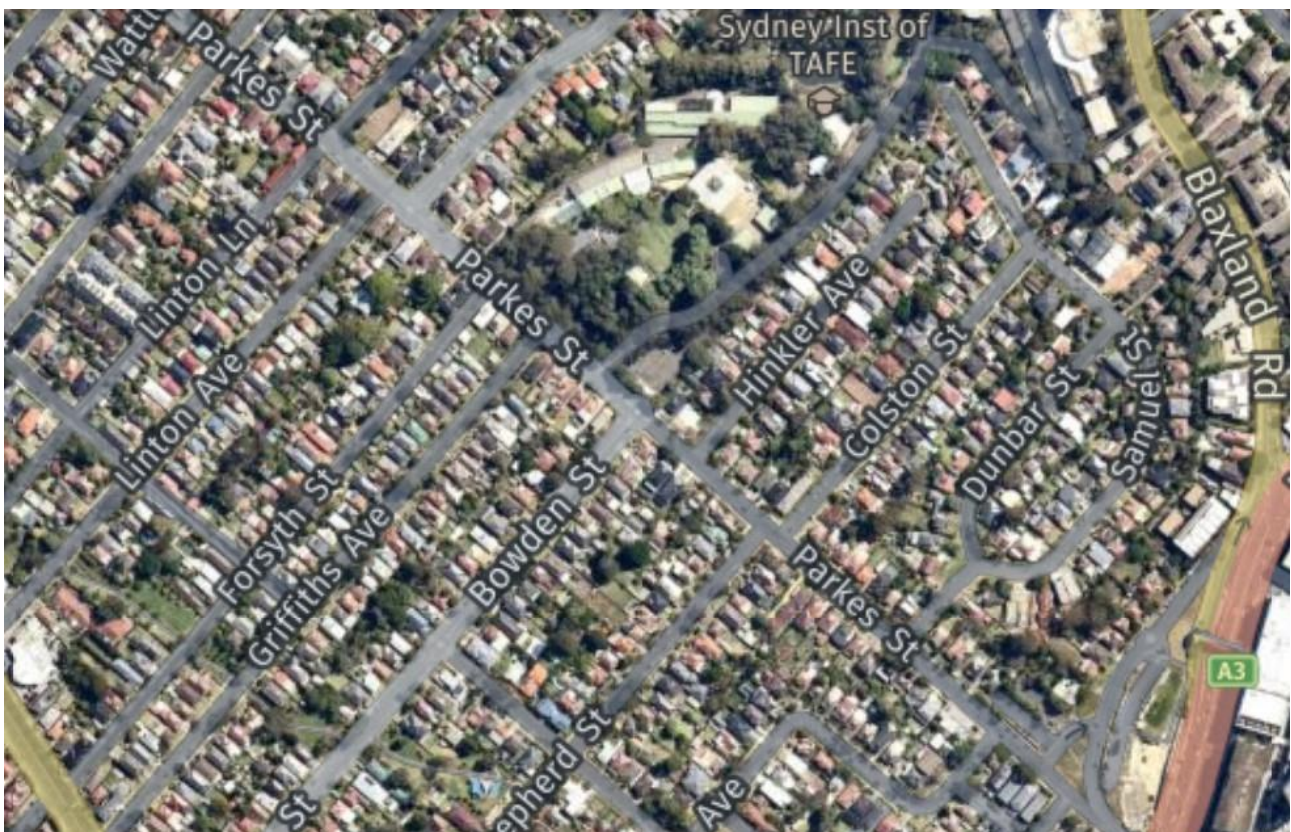
ELECTORATE: RYDE  
WARD: CENTRAL  
ROAD CLASS: NON-CLASSIFIED  
OFFICER: K WELLS

Traffic Committee Members are required to advise whether they have any pecuniary or non-pecuniary interest about the item discussed below.

**PROPOSAL**

Council is proposing to install a series of traffic calming devices on Parkes Street intersections (at Falconer Street, Clarke Street, Melville Street, Linton Avenue, Griffiths Avenue, Bowden Street, Colston Street, Shephard Street, Hinkler Avenue, Lee Avenue, Samuel Street) between Falconer Street and Lee Avenue, West Ryde.

**Figure 1** shows the locations of the proposed traffic calming measures.



**Figure 1: Location Plan**

## DISCUSSION

Parkes Street functions as a collector road between Ryde and West Ryde. Due to the parallel alignment to Victoria Road, it is frequently used by motorists seeking to avoid the localised congestion on Victoria Road at the intersection of Devlin Street, particularly during the morning peak period.

Traffic counts conducted in the area show a traffic volume of 7750 vehicles/day, with an 85% vehicle speed of 58km/h. Several incidents have occurred on this section, a few at intersections, which has prompted Council to apply for blackspot funding along this length of road.

The intent of the treatment is to highlight the intersections on Parkes Street by the installation of kerb blister islands. This has several effects on the traffic flow.

1. It highlights the intersections for motorists on Parkes Street.
2. The islands narrow the carriageway on Parkes Street, altering the driver perception of a long uninterrupted straight section of road.
3. Intersection treatments of this type allow the hold line on side streets to be brought slightly forward, improving the sight distance for motorists entering Parkes Street.

This treatment type is recognised by Transport for NSW as an effective method of reducing rates of vehicle crashes and lowering speeds along a length of road. This project was submitted under the 2023-24 Australian Blackspot program. Council is still waiting on the funding confirmation from Transport for NSW.

A swept path analysis has been done by Council which demonstrates that the islands will not have an impact on the ability to traverse the intersections.

As the intersection of Melville Street and Parkes Street is roundabout controlled, the kerb blister treatment type is not suitable. To maintain the traffic calming effects along the route Council has opted for speed cushions at this location.

**Figures 2 to 5** show the details of the proposed changes.

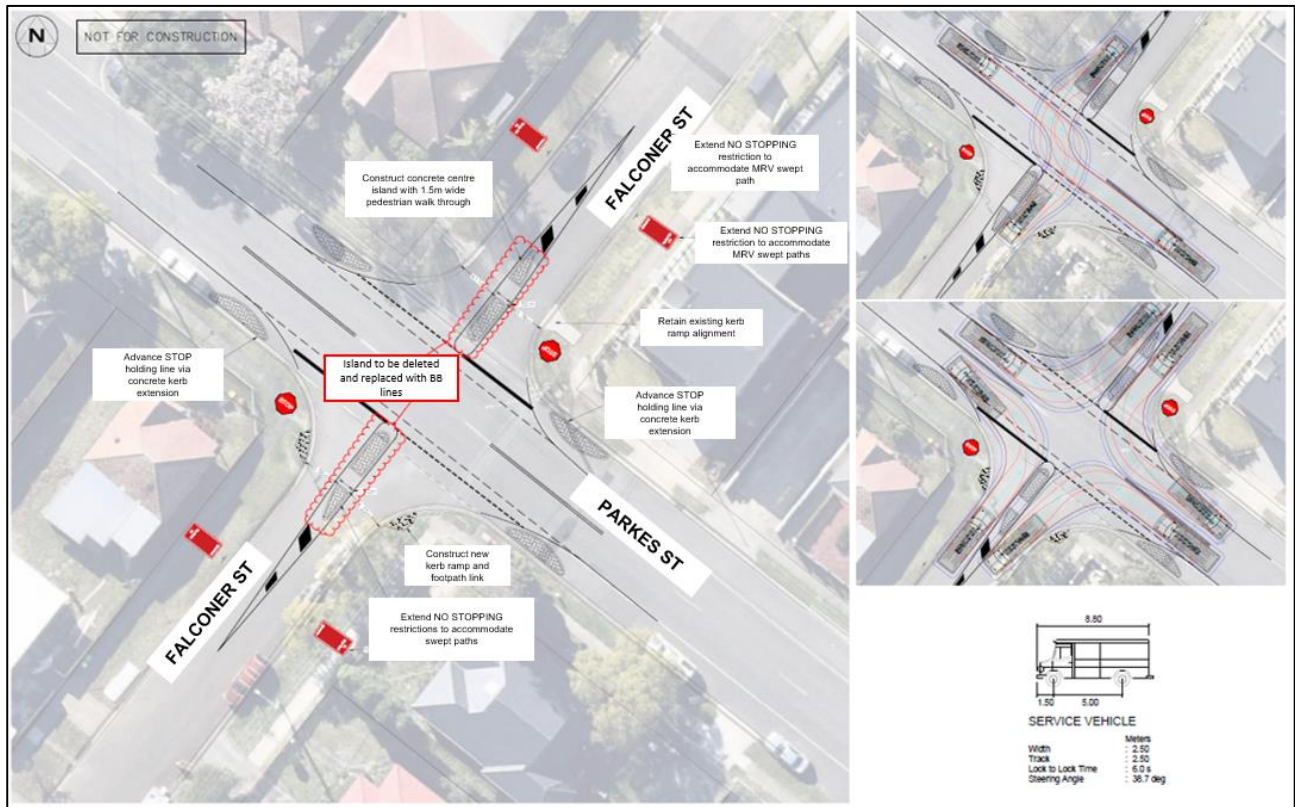
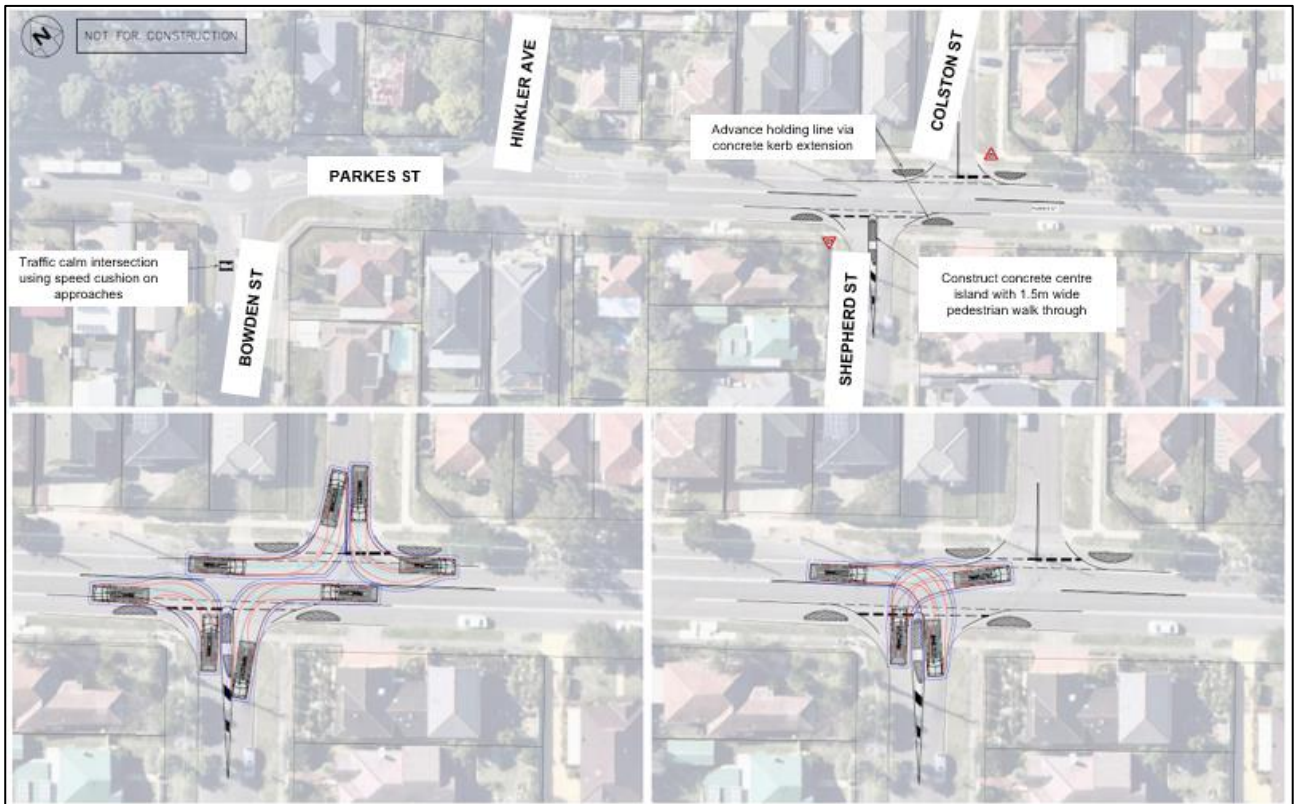


Figure 2 – Falconer Street, West Ryde



Figure 3 – Clarke St, Linton Ave, Melville St, Griffiths Ave, Forsyth St, West Ryde



**Figure 4 – Bowden St, Hinkler Ave, Shepherd St, Colston St, West Ryde**



**Figure 5 – Samuel St, Lee Ave, West Ryde**

**FUNDING**

Council is awaiting confirmation from Transport of NSW on the outcomes of the 2023-24 Australian Blackspot program.

**CONSULTATION**

This project does not affect access to abutting developments or results in loss of on-street parking. As such community consultation was not required. However, affected residents will be notified prior to the commencement of any construction activity.

**RECOMMENDATION:**

The Ryde Traffic Committee recommends that: -

- a) Traffic calming devices be installed along Parkes Street intersections, West Ryde at the following locations:
  - 1. Falconer Street
  - 2. Clarke Street
  - 3. Melville Street
  - 4. Linton Avenue
  - 5. Griffiths Avenue
  - 6. Bowden Street
  - 7. Colston Street
  - 8. Shephard Street
  - 9. Hinkler Avenue
  - 10. Lee Avenue
  - 11. Samuel Street

**ITEM (E) CHATHAM ROAD, WEST PARADE & HILLVIEW ROAD  
WEST RYDE & EASTWOOD**

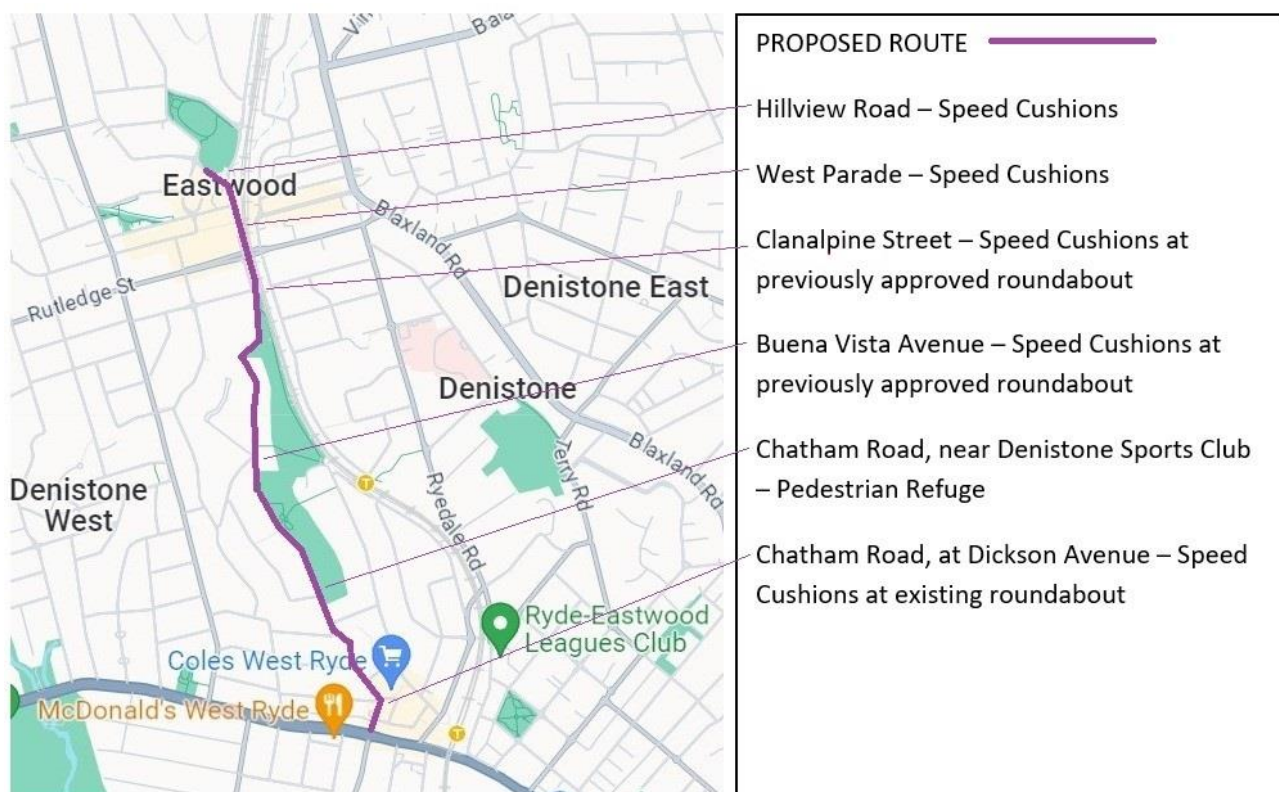
**SUBJECT: TRAFFIC CALMING**

ELECTORATE: RYDE  
WARD: WEST / CENTRAL  
ROAD CLASS: NON-CLASSIFIED  
OFFICER: K WELLS

Traffic Committee Members are required to advise whether they have any pecuniary or non-pecuniary interest about the item discussed below.

**PROPOSAL**

Council is proposing to install a series of traffic calming devices along a route consisting of Chatham Road, West Parade and Hillview Road, in West Ryde and Eastwood. **Figure 1** shows the locations of the proposed traffic calming along the length of the route.



**Figure 1: Location Plan**

## DISCUSSION

Chatham Road operates as a local link between West Ryde and Eastwood. Traffic counts conducted in the area show a traffic volume of 5898 vehicles/day, with an 85% vehicle speed of 57km/h.

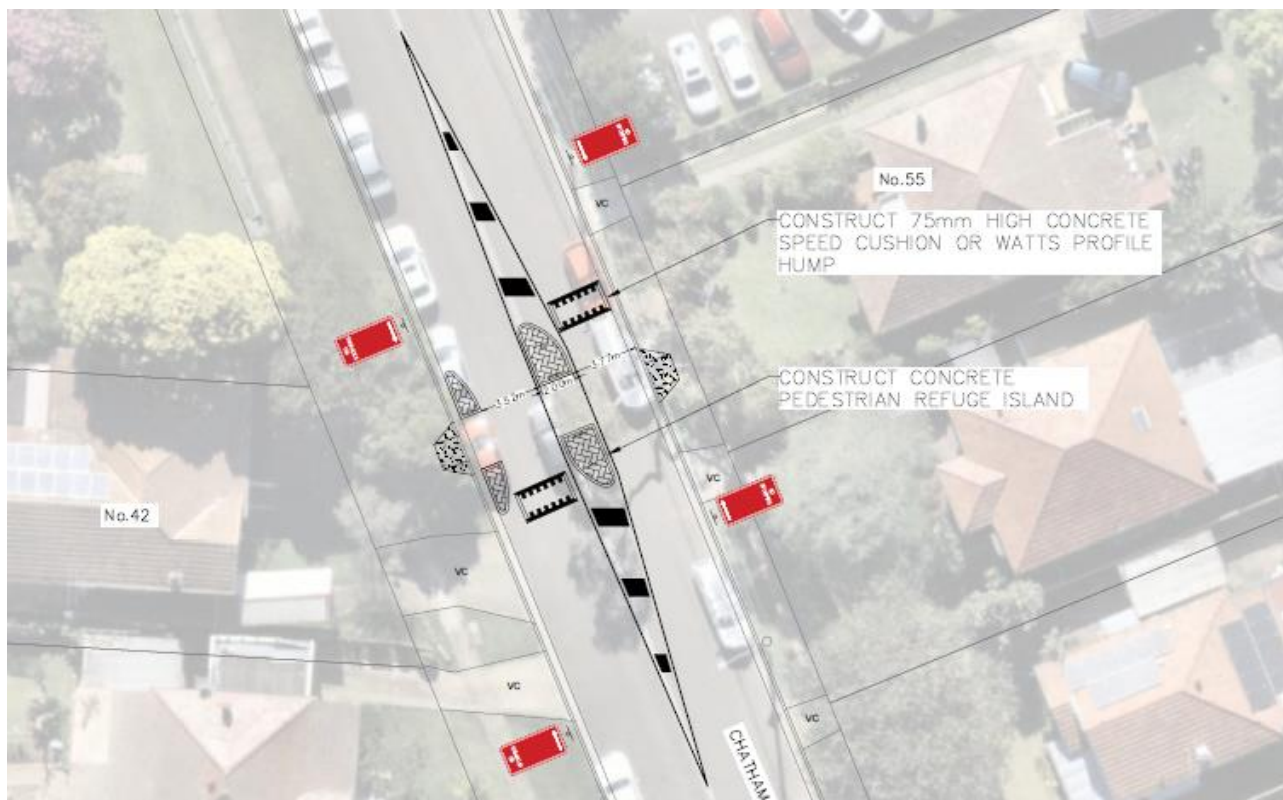
Several incidents have occurred on this section, many at intersections, which has prompted Council to apply for blackspot funding along this road corridor.

The intent is to keep speeds lower by the placement of traffic calming devices at regular intervals. The primary treatment for the route is the installation of watts profile speed humps to lower vehicle speeds along the full length of the corridor.

Other than the speed humps Council proposes to install a pedestrian refuge on Chatham Road, near Denistone Sports Club, which has an observed pedestrian demand, largely generated by the club and nearby recreational activities. The location of the refuge is a concept only and will require consultation with affected residents prior to the creation of a detailed design. Pedestrian refuges serve a dual purpose of improving pedestrian amenity and providing localised road narrowing and horizontal deflection to act as traffic calming.

Council is seeking in principle support for the refuge only as it will require further investigation prior to installation. The proposed location is shown below in **Figure 2**.

These treatment types are recognised by Transport for NSW as an effective method of reducing rates of vehicle crashes and lowering speeds along a length of road. This project has been endorsed by TfNSW, and Council is awaiting the results of the blackspot funding for the financial year.



**Figure 2 – Proposed location of pedestrian refuge – Chatham Road, West Ryde.**

The locations of the speed humps are at intersections along the route. The majority of incidents along the route are occurring at intersections and the intention is to lower the speeds of vehicles on approach, which allows for greater reaction time for motorists.

**Figure 3** shows the locations of traffic calming devices.



**Figure 3 – Locations of proposed traffic calming (speed humps) along the route.**

**FUNDING**

There is no funding available for this project. Council is awaiting confirmation of the blackspot funding application.

**CONSULTATION**

This project is seeking in principle support for the traffic calming along the route. The installation of the pedestrian refuge will require consultation with affected residents prior to a detailed design. The location of the refuge may vary in order to minimise the loss of on street parking in the residential area.

**RECOMMENDATION:**

The Ryde Traffic Committee recommends that: -

- a) Route traffic calming be installed along a route that includes Chatham Road, West Parade and Hillview Road in West Ryde and Eastwood (subject to availability of funds).
- b) That in principle support be given to the installation of a pedestrian refuge on Chatham Road, near Denistone Sports Club.

**ITEM (F)                      RYDE TRAFFIC COMMITTEE (RTC)****SUBJECT:                      2024 MEETING DATES**

ELECTORATE:      RYDE  
WARD:                ALL  
OFFICER:            I SHAIK

Traffic Committee Members are required to advise whether they have any pecuniary or non-pecuniary interest about the item discussed below.

**PROPOSAL**

The RTC meetings for 2024 are scheduled on the following dates:

- 1) 22 February 2024
- 2) 21 March 2024
- 3) 24 April 2024
- 4) 27 June 2024
- 5) 25 July 2024
- 6) 26 September 2024
- 7) 24 October 2024 and
- 8) 21 November 2024

**DISCUSSION**

There is a traffic committee meeting proposed every month with the exception of January, May, August and December as these periods coincide or close to school holidays which impact on public consultation, traffic surveys and investigations.

**RECOMMENDATION**

The Ryde Traffic Committee recommends that:

- a) The 2024 Ryde Traffic Committee meetings be held on the following dates:

1. 22 February 2024
2. 21 March 2024
3. 24 April 2024
4. 27 June 2024
5. 25 July 2024
6. 26 September 2024
7. 24 October 2024 and
8. 21 November 2024

<b>ITEM (G)</b>	<b>ROAD SAFETY UPDATE</b>
<b>SUBJECT:</b>	<b>ROAD SAFETY PROGRAMS</b>
<b>ELECTORATE:</b>	RYDE / LANE COVE
<b>WARD:</b>	ALL
<b>OFFICER:</b>	L PEARS

Traffic Committee Members are required to advise whether they have any pecuniary or non-pecuniary interest with regards to the items discussed below.

### **TRANSPORT FOR NEW SOUTH WALES (TfNSW) FUNDED PROGRAMS**

The next Child Car Seat Checking Day will be held on 21 November at Blenheim Park.

A Walking Safely for Seniors presentation was delivered to participants of a falls prevention group on 9 November.

### **COUNCIL FUNDED PROGRAMS**

#### **Community Engagement**

Council is delivering a series of road safety presentations to local community groups throughout November, targeting the Chinese, Iranian and Hispanic communities.

Road safety information will be provided at the Community Expo on 23 November at North Ryde School of Arts.

The next Safer Driving for Seniors presentation will be held in Marsfield on 30 November.

### **RECOMMENDATION**

The Ryde Traffic Committee recommends that:

- a) The Road Safety report be received and noted.