



19 May 2016

File: COR2009/206

NOTICE OF MEETING

You are advised of the following meeting:

Thursday 19 May 2016

Ryde Traffic Committee Meeting

Committee Room 1, Level 5, Civic Centre, 1 Devlin Street, Ryde - 10.00am

MEMBERS

City of Ryde (Chair)..... Director City Works & Infrastructure
Roads and Maritime Services of NSW Sydney North Region
NSW Police Force Ryde Local Area Command
Member for Ryde (2 items)..... The Hon. V Dominello MP
Member for Lane Cove (1 items)..... The Hon. A Roberts MP

ADVISORS

Sydney Buses Western Region

Committee members and advisors are invited to attend the next meeting of the Traffic Committee. Alternatively, please forward comments on any matter to City of Ryde's Team Leader - Traffic Services, Mr Greg Holding, via email gholding@ryde.nsw.gov.au by 5pm Tuesday, 17 May 2016. If no comments are received, it is intended to deal with the matters in accordance with the Agenda proposals.

Councillors with an interest in any Agenda item should forward comments to City of Ryde's Team Leader - Traffic Services, Mr Greg Holding, via email gholding@ryde.nsw.gov.au by 5pm Tuesday, 17 May 2016.



Meeting Date: Thursday, 19 May 2016
Location: Committee Room 1, Level 5, Civic Centre, 1 Devlin Street, Ryde
Time: 10.00am

NOTICE OF BUSINESS

APOLOGIES

DECLARATIONS OF INTEREST

CONFIRMATION OF PREVIOUS MINUTES

The minutes of the Ordinary Meeting of the Ryde Traffic Committee held on 17 March 2016 were read and confirmed as a true record of the proceedings at the conclusion of the meeting.

MATTERS ARISING FROM PREVIOUS MINUTES

MATTERS FOR CONSIDERATION

ITEM (A)	LINSLEY STREET, GLADESVILLE
SUBJECT:	GLADESVILLE PUBLIC SCHOOL DROP-OFF/PICK-UP ZONE
ELECTORATE:	LANE COVE
WARD:	EAST
ROAD CLASS:	NON-CLASSIFIED
REFERENCE:	T2016-00452
OFFICER:	L PEARS

ITEM (B)	GLADSTONE AVENUE, RYDE
SUBJECT:	INTERSECTION FORMALISATION AT MORRISON ROAD
ELECTORATE:	LANE COVE
WARD:	CENTRAL
ROAD CLASS:	NON-CLASSIFIED
REFERENCE:	D15/126542 & T2015-01604
OFFICER:	S WOOD



ITEM (C)	DURHAM CLOSE, MACQUARIE PARK
SUBJECT:	NO PARKING
ELECTORATE:	RYDE
WARD:	CENTRAL
ROAD CLASS:	NON-CLASSIFIED
REFERENCE:	D15/97239 & T2015-01439
OFFICER:	S WOOD

EXTRA ITEMS

GENERAL BUSINESS

ADDENDUMS

ADDENDUM 1	MARCH AND MAY RYDE TRAFFIC COMMITTEE REPORTS
-------------------	---



ITEM (A)	LINSLEY STREET, GLADESVILLE
SUBJECT:	GLADESVILLE PUBLIC SCHOOL DROP-OFF/PICK-UP ZONE
ELECTORATE:	LANE COVE
WARD:	EAST
ROAD CLASS:	NON-CLASSIFIED
REFERENCE:	T2016-00452
OFFICER:	L PEARS

INTRODUCTION

City of Ryde has received representation from Gladesville Public School and the Gladesville Public School P&C requesting consideration be given to converting two existing 'NO PARKING 8AM-9.30AM 2.30PM-4PM SCHOOL DAYS' zones in Linsley Street, Gladesville to 'P5MIN 8AM-9.30AM 2.30PM-4PM SCHOOL DAYS'.

BACKGROUND

Gladesville Public School P&C, with support from City of Ryde and Ryde LAC, has recently implemented a Kiss & Ride marshalling and education program for the use of the drop-off/pick-up zones in Linsley Street. This location has had ongoing safety and congestion issues due to the movement of vehicles in and around the drop-off/pick-up zones located either side of the raised pedestrian crossing, directly outside the school.

CONTEXT

1. Linsley Street is a local road with a 7 m wide carriageway and operates one-way, from Victoria Road through to Morrison Road.
2. The existing parking control measures in Linsley Street, between Coulter Street and Orr Street:
 - 'NO PARKING 8AM-9.30AM 2.30PM-4PM SCHOOL DAYS' on the School side of the street,
 - 'NO STOPPING 8AM-9.30AM 2.30PM-4PM SCHOOL DAYS' opposite the School, between Coulter Street and the raised pedestrian crossing, and
 - 'NO PARKING 8AM-9.30AM 2.30PM-4PM SCHOOL DAYS' opposite the school, between the raised pedestrian crossing and Orr Street.

LEGISLATION, STANDARDS & GUIDELINES

- [NSW] *Road Rules 2014* Rule 168 No parking signs
- [NSW] *Road Rules 2014* Rule 205 Parking for longer than indicated



CONSULTATION

The School Principal and P&C are in favour of the proposed changes. Council's Ranger and Parking Services unit was also consulted and supports the proposed changes.

DISCUSSION

The Kiss & Ride program consists of parent volunteers providing marshalling during morning drop-off and afternoon pick-up periods, plus accompanying education for parents on how to use the Kiss & Ride area correctly to minimise risk to children. Information distributed to all parents includes guidelines on entering, exiting and queuing within the Kiss & Ride area, with a map on a 'looping' route. Assistance and safety equipment for volunteers has been provided. In addition, maintenance and upgrade works on footpath, signage and crossing has begun and relevant works requests logged with RMS. Since implementing the program, there has been a noticeable improvement in the safe movement of traffic and pedestrians in Linsley Street.

City of Ryde has been working with the school and P&C to evaluate implementation and identify resources and actions that could improve the effectiveness of the program. This proposal, below, is a result of this evaluation process. The Kiss & Ride zones located after the crossing are not supervised and not clearly visible to children waiting inside the school gate area. Instead, these areas would provide an effective means for parents needing to park and leave their cars to assist children to and from the school grounds.

PROPOSAL

To convert the existing 'NO PARKING 8AM-9.30AM 2.30PM-4PM SCHOOL DAYS' zones in Linsley Street, Gladesville between the raised pedestrian crossing, located outside the Gladesville Public School, and Orr Street, to 'P5min 8AM-9.30AM 2.30PM-4PM SCHOOL DAYS'.

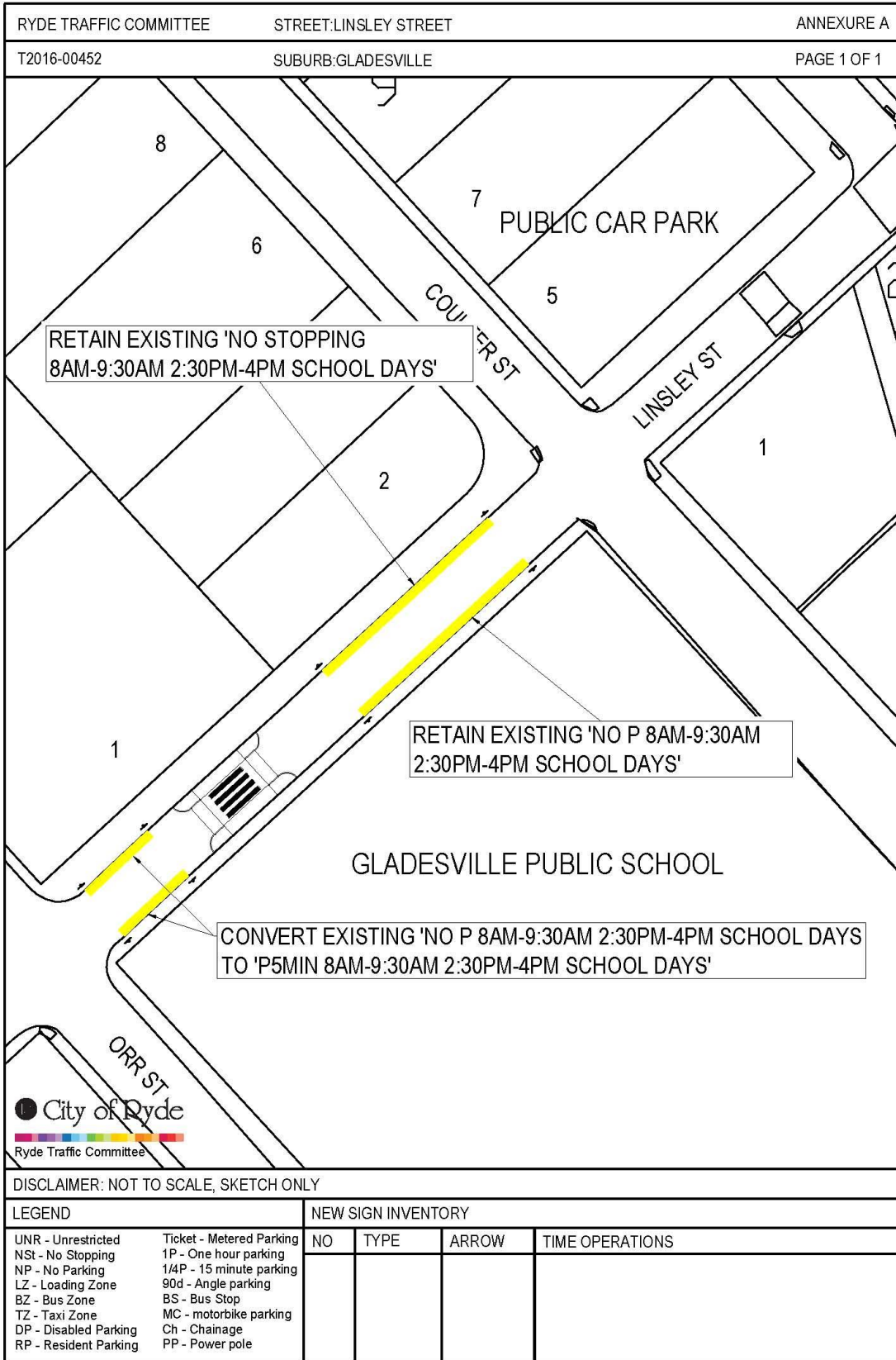


COPYRIGHT
 © 2016 City of Ryde
 © 2016 NSW Department of Lands

DISCLAIMER
 This map has been compiled from various sources and the City of Ryde and/or contributors accept no responsibility for any errors, loss or damage arising from its use or reliance or otherwise. Users are advised to verify the accuracy of any information shown. Users are invited to verify Council of any discrepancies.



File Name:	
Date:	29/03/2016
Scale:	1:300





ITEM (B)	GLADSTONE AVENUE, RYDE
SUBJECT:	INTERSECTION FORMALISATION AT MORRISON ROAD
ELECTORATE:	LANE COVE
WARD:	CENTRAL
ROAD CLASS:	NON-CLASSIFIED
REFERENCE:	D15/126542 & T2015-01604
OFFICER:	S WOOD

INTRODUCTION

City of Ryde has received representation from a resident of Gladstone Avenue requesting consideration be given to improving sight distance for vehicles exiting Gladstone Avenue onto Morrison Road, Ryde.

CONTEXT

1. The intersection of Morrison Road and Gladstone Avenue is a 'T'-intersection and there are no other intersection controls at this location.
2. There are no formal parking controls signposted in Morrison Road at this location and the road topography creates sightlines of less than 30 m for vehicles exiting Gladstone Avenue.
3. Near misses have been reported by the resident.

LEGISLATION, STANDARDS & GUIDELINES

- Australian Standards' *AS 1742.2:- 2009 MUTCD – Part 2 Traffic control devices for general use*
- [NSW] *Road Rules 2014* Rule 67 Stopping and giving way at a stop sign or stop line at an intersection without traffic lights
- [NSW] *Road Rules 2014* Rule 197 Stopping on a path, dividing strip, nature strip, painted island or traffic island

CONSULTATION

A letter has been distributed to local residents advising them of the proposal.



DISCUSSION

Australian Standards recommends installing a ‘STOP’ sign and associated linemarking when sightlines are 30 m or less and alternative measures to improve conditions are not feasible. However, even with 15 m of ‘NO STOPPING’ in Morrison Road sightlines would be less than 30 m.

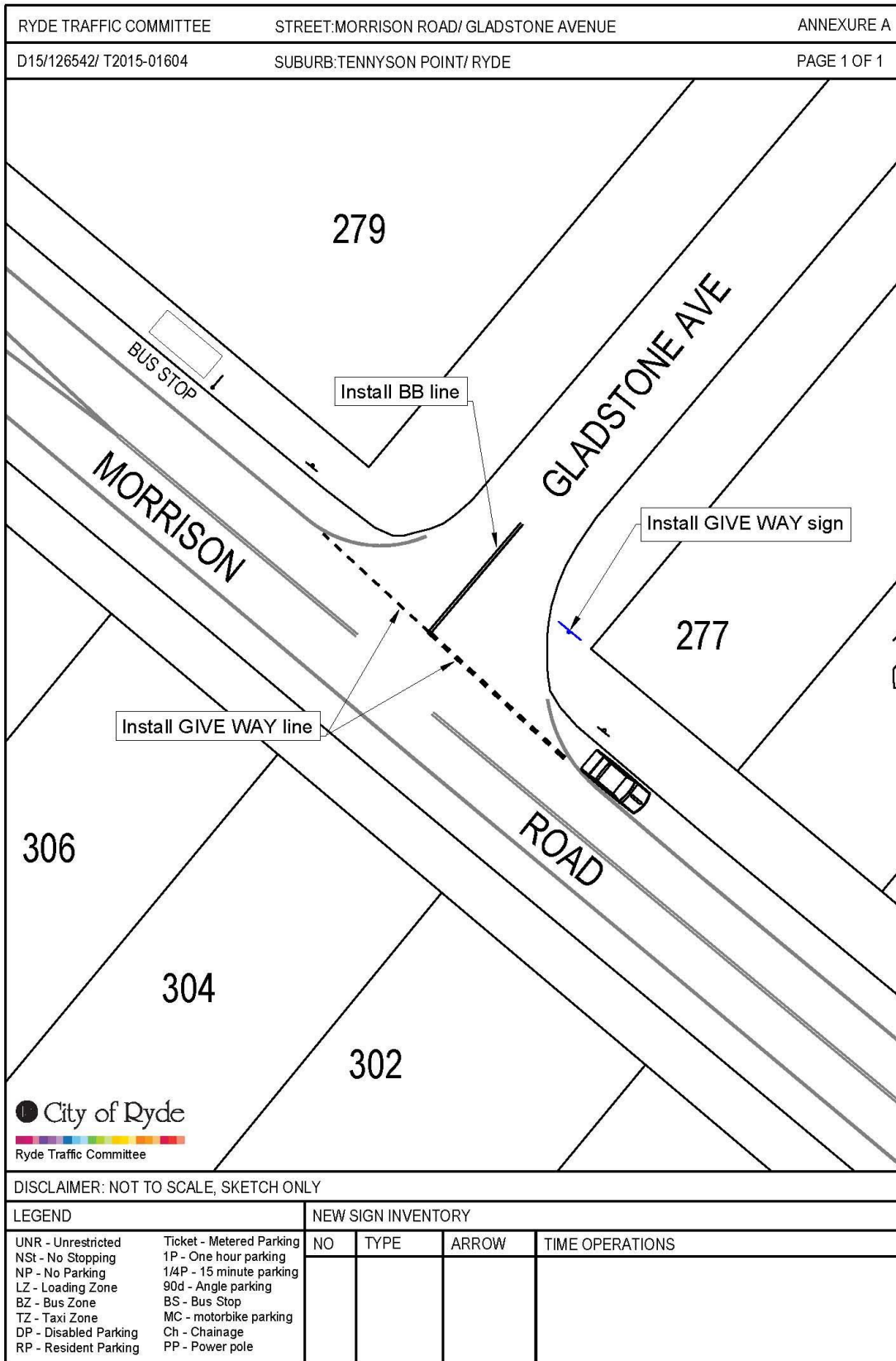
By installing a ‘GIVEWAY’ sign and bringing the ‘GIVEWAY’ line forward, it is only necessary to install 10 m of ‘NO STOPPING’ either side of the intersection. This solution improves sightlines in excess of 30 m and does not require the loss of any legal on-street parking spaces.

PROPOSAL

To install a ‘GIVEWAY’ sign and associated linemarking in Gladstone Avenue at Morrison Road, Ryde as shown in the attached drawing.



File Name:	
Date:	29/03/2016
Scale:	1:800



**ITEM (C) DURHAM CLOSE, MACQUARIE PARK**

SUBJECT: NO PARKING
ELECTORATE: RYDE
WARD: CENTRAL
ROAD CLASS: NON-CLASSIFIED
REFERENCE: D15/97239 & T2015-01439
OFFICER: S WOOD

INTRODUCTION

City of Ryde has received representation from a number of residents of Durham Close requesting consideration be given to installation of 'NO PARKING' control measures on the northern side of Durham Close, Macquarie Park.

BACKGROUND

City of Ryde received two petitions, containing a total of 99 signatures, from the residents of Durham Close in August and November 2015 requesting the installation of parking control measures in Durham Close to improve sightlines around the two bends.

CONTEXT

1. Parking in Durham Close is currently unrestricted and it is heavily parked during the day, Monday to Friday.
2. An indented parking bay opposite 44 Khartoum Road provides space for 4 vehicles.
3. Two private driveways within Durham Close provide access to over 100 dwellings, each with off-street parking.
4. Durham Close is 8 m wide at its eastern end, widening to 11 m at its western end.
5. There are 'NO STOPPING' restrictions at the intersection of Durham Close and Khartoum Road. These extend into Durham Close for 19 m on the southern side and 32 m on the northern side (across the first driveway to 44 Khartoum Road).

LEGISLATION, STANDARDS & GUIDELINES

- [NSW] *Road Rules 2014* Rule 168 No Parking Signs



CONSULTATION

Local residents were surveyed to ascertain the level of support for installing 23 m and 21 m 'NO PARKING MON-FRI 9:30AM-4PM' zones in Durham Close, outside 44 Khartoum Road and 2 Durham Close, respectively.

Properties consulted	123
Responses received	48
Supported	47
Not Supported	1
Undecided	0

Following the consultation period, local residents were advised that, following a positive response to the survey, City of Ryde intends to table the matter at Ryde Traffic Committee.

DISCUSSION

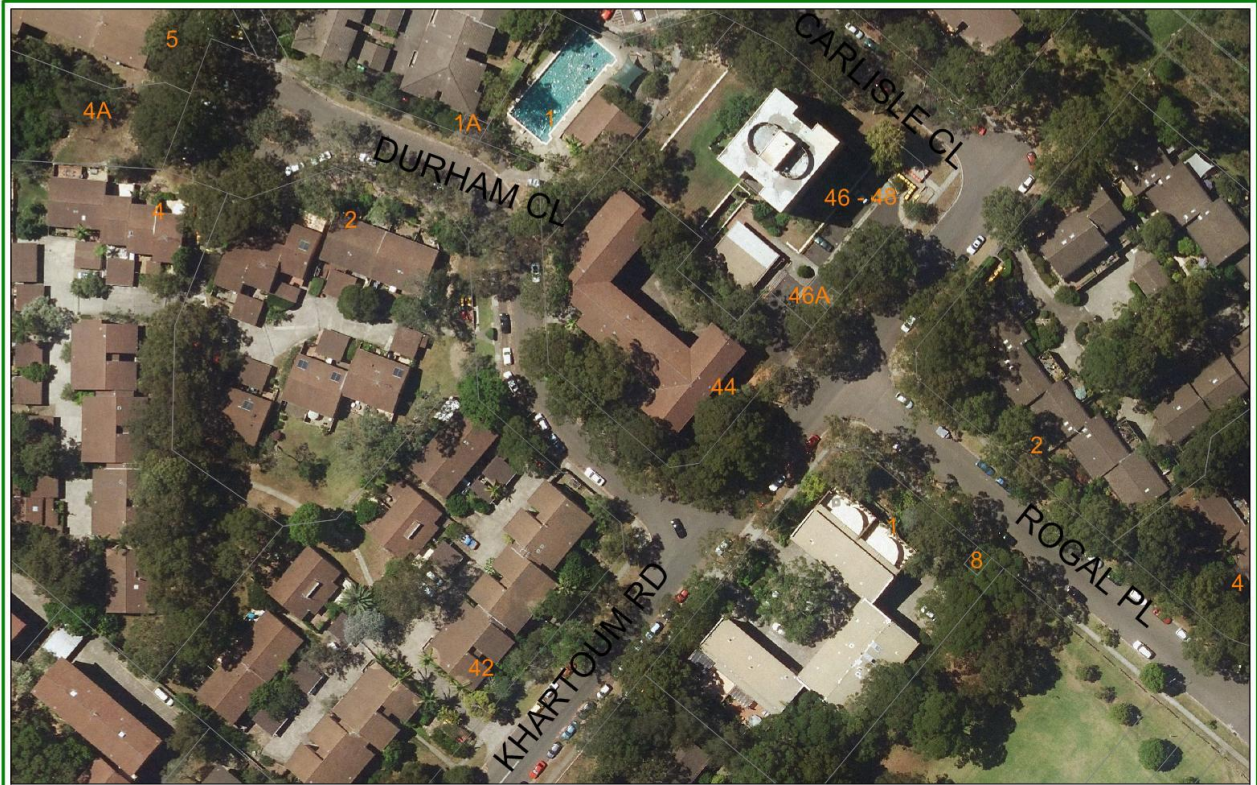
The southern end of Khartoum Road is subject to twelve-hour parking control measures and as a consequence the unrestricted northern end, including Durham Close, is regularly used by motorists who wish to park during the day and walk to the Macquarie Park business area.

The existing situation in Durham Close allows vehicles to legally park on both sides, including around the two bends. This reduces the available road width and does not allow two vehicles to pass unimpeded, requiring motorists to give way. The reduction in sightlines and effective carriageway width caused by vehicles parking on the inner radius of the bend is creating potential conflict when motorists traverse the bend and further restricts visibility of oncoming traffic for pedestrians wishing to cross in these locations.

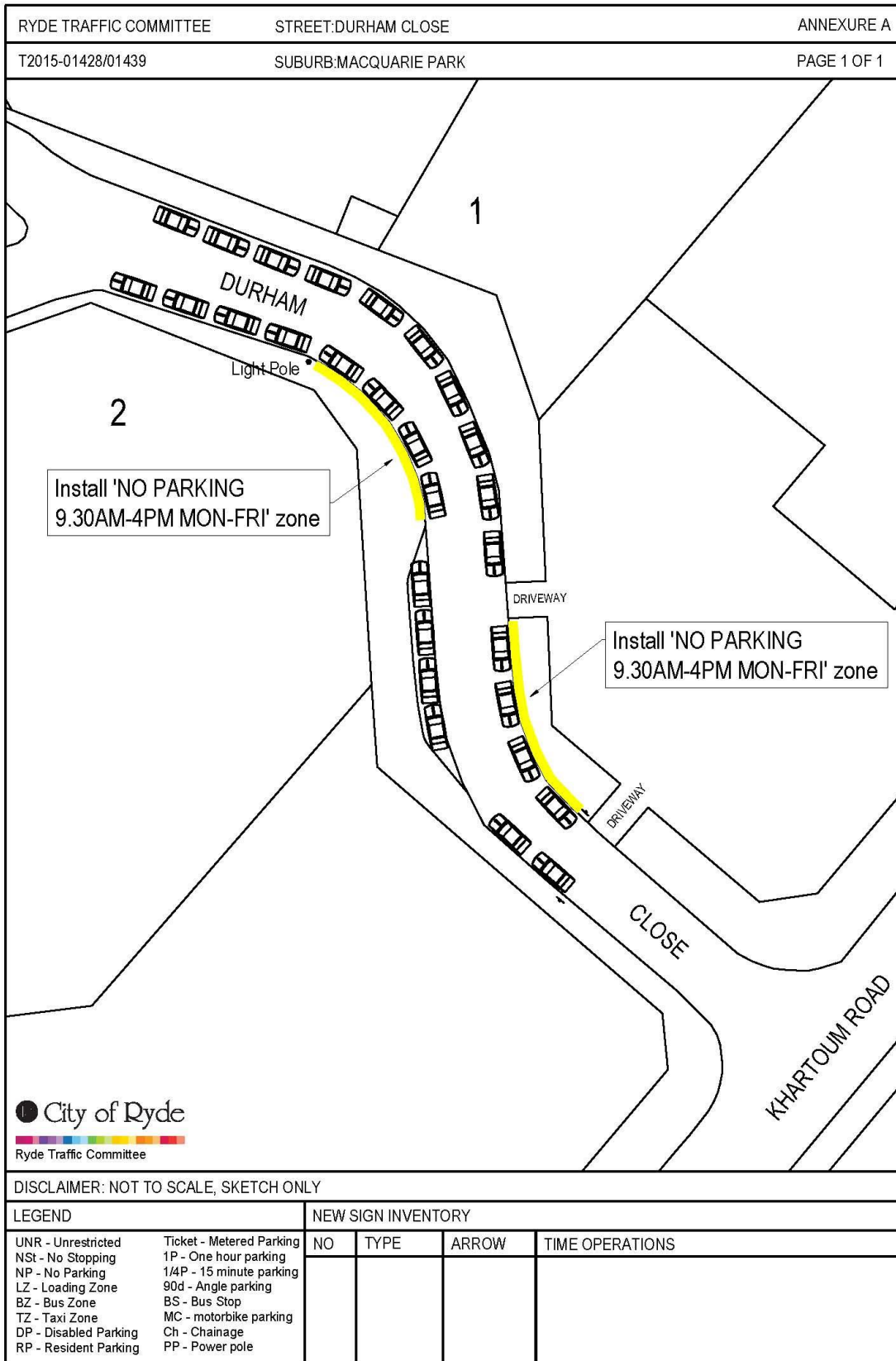
Therefore it is recommended that, to improve sightlines and reduce the potential for conflicts to occur, 'NO PARKING MON-FRI 9:30AM-4PM' control measures be installed around the inside of the two bends. Residents have specifically asked for 'NO PARKING' so that vehicles are still able to stop to drop-off/pick-up goods/passengers if required. This will effect a total of eight car spaces.

PROPOSAL

1. To install a 23 m 'NO PARKING MON-FRI 9:30AM-4PM' zone in Durham Close, outside 44 Khartoum Road, Macquarie Park.
2. To install a 21 m 'NO PARKING MON-FRI 9:30AM-4PM' in Durham Close, outside 2 Durham Close, Macquarie Park.



File Name:	
Date:	29/03/2016
Scale:	1:700



ADDENDUM 1 - MARCH AND MAY RYDE TRAFFIC COMMITTEE REPORTS

Over the last several months, City of Ryde has experienced an increase in the number and complexity of requests to change traffic and parking measures, including:

- larger projects, such as:
 - Ryde East Public School (Badajoz Road and Twin Street),
 - Childcare Centre at 21 Winbourne Street, and
 - Morrison Road local area traffic management scheme,
- complex investigations, which determined that the existing conditions are the most appropriate,
- Development Applications and associated permits,
- Councillor and state Member of Parliament representations, and
- general requests from the public.

This has required an increase in administration and often lengthy investigations for the Traffic Team, including referrals to RMS. Combined with recent staff illnesses, this has reduced the resources available to table proposals at the Ryde Traffic Committees in March and May.

In order to better manage the limited resources of Council, alternative methods are being investigated, including:

- prioritising all investigations,
- streamlining administration processes,
- reducing the turn-around period to approve minor changes, and
- undertaking low-priority investigations on an area-wide basis, as resources allow.

Further details of the changes will be discussed at the Ryde Traffic Committee meeting.