

## 1901 - 1902: Harry Curzon Smith's School

Agincourt Road, Marsfield

## Early 1900s?: Mr Hoskins

Agincourt Road, Marsfield

## Eastwood College

1904 - 1908: Lucy Ellen Rigby

Trelawney Street, Eastwood

1910 - 1917: Misses Hartley

Adelaide Mary Hartley, Lizzie Clarenza Hartley,  
Theodosia Tryphena Hartley and Mrs Elizabeth  
Hartley

Trelawney Street, Eastwood

1918: Miss C Liggins

Duntroon Street, Eastwood  
(now part of Rutledge Street)

1907 - 1908: Miss Chatfield

Agincourt Road, Marsfield

1908: Fanny Spier Dyason

Ethel Street, Eastwood

1917: Mrs M Walker

Rothsay Avenue, Ryde

1920 - 1922: Misses Nielsen

Genevieve/Jensena May Nielsen, Violet  
Susannah Nielsen at the home of Camilla/  
Camellia Olivia Nielsen

*Elsinore*, 20 Osborne Avenue, Putney

1928: Edith Keith

2 - 4 Auld Avenue, Eastwood

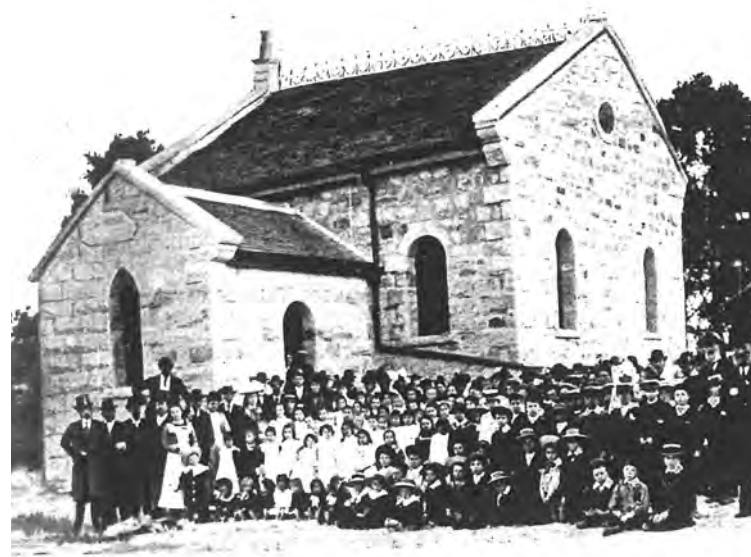
## Braemer College

c. 1929 - c. 1931: Eastwood

c. 1931 - c. 1942: 1 Railway Avenue, Eastwood

c. 1942 - c. 1956: 4 Auld Avenue, Eastwood

(also at Dundas) Principals included Marjorie Gordon and  
Dorothy Knutsen/Knutsen



Henry Curzon Smith's School  
at Marsfield, 1901 - 1902

## Want to know more?

Contact the Local Studies and  
Family History Librarian

### RYDE LIBRARY

1 Pope Street, Ryde NSW 2112  
(within Top Ryde City Shopping Centre)  
Tel: (02) 9952 8353  
Email: rydelibrary@ryde.nsw.gov.au

Access your library online at  
[www.ryde.nsw.gov.au/library](http://www.ryde.nsw.gov.au/library)  
Email: rydelibrary@ryde.nsw.gov.au

# Classical and Commercial Academies, Ladies' Seminaries and Private Schools

Ryde Local Government Area  
in the 19th and 20th centuries



Lifestyle and opportunity  
@ your doorstep

This is a list of individuals who established or operated schools described variously as classical and/or commercial academies, ladies' seminaries or private schools. It does not include government or major denominational schools such as those operated by the Anglican or Catholic churches though some of those listed had strong religious associations: Rev Thomas Aitken of Tamworth Lodge was a Presbyterian minister; Joseph Kemish also operated a Baptist Sunday School.

For some schools the only information available is a name and date with no indication of an exact location. Likewise, evidence of the existence of a school may come to light only when it closes down.

For those run by, for example, the 'Misses Hartley' or 'Misses Nielsen' it is an educated guess as to how many of the unmarried women living at that address were involved in the running of the school!

This list has been compiled from a number of historical and genealogical resources. Acknowledgment is given to the work of P A Coghlan in Education, religion and life at Kissing Point (Ryde), 1792-1879. Additional information may be available in the Local Studies Collection at Top Ryde Library.

Also, if you have the names of individuals or schools to add or additional information about any of those listed please contact the Local Studies Librarian.



**Helenie**, Meadowbank  
site of a school in 1846

**1825: Thomas Bowden**  
***Australian Boarding School***  
'On the banks of the Parramatta River'

**1842 - 1843, 1846 - 1847: James Douglas**  
At Kissing Point

**1843 - 1853: Reverend George Turner**  
At Kissing Point

**1845: Christopher Meyers**  
At Kissing Point, 'near the Steamer Wharf, adjoining the Church'

**1846: J J Davies**  
At ***Helenie***

**1846 - 1848: Joseph and Harriet Kemish**  
At Kissing Point

**1849 - 1850: Sarah Clift**  
At Ryde

**1849 - 1850: H H Fleming**  
Bedlam Road

**1850 - 1852: Elizabeth Small**  
At Ryde

**1852 - 1854: Charles Stevens**  
At Ryde

**1853: Louisa Emmett**  
At Ryde

**1853 - 1859: Ellen Salmon**  
At ***Stokes Cottage***

**1854: John Locket**  
At Ryde

**1856: John/James Stone**  
At Ryde

**1857 - 1860: Rev Thomas Aitken**  
At ***Tamworth Lodge***

**1864: Elizabeth Jurd**  
At Ryde

**1864: Henry Delves**  
At Ryde

**1882: Mrs T J Baxter**  
Seminary, Parramatta Road  
(now Victoria Road, west of Top Ryde)

**1887 - 1889: Catherine Richmond**  
At ***Laurel Bank***, Gladesville Road, Ryde  
(now Victoria Road)



***Willandra***, Ryde  
site of Rydal Mount School, 1891 - 1889

**1891 - 1889: Ellen Pye**  
'Rydal Mount' at ***Willandra***

**1894, 1897: Celia Hogan**  
**1896: Peter Hogan**  
Gladesville Road, Gladesville  
(now Victoria Road)