

SPRING 2024

LIVE. WORK. PLAY.

**Your guide
to what's on
in your City**

**News in
your City**



**Granny Smith
Festival guide**



**Ryde Shine
Ability
Competition**



To view the magazine online visit
www.ryde.nsw.gov.au/LiveWorkPlay

 **City of Ryde**

Community message

A MESSAGE FOR THE CITY OF RYDE

Welcome to the spring edition of Live. Work. Play. magazine, which once again offers a fantastic round-up of Council news, activities, and events as the days grow longer and the temperature starts to heat up.

In the City of Ryde, spring is all about the famous Granny Smith Festival, which is the biggest event on our annual calendar.

This much-loved community street fair returns on Saturday 19 October from 9.00am – 8.30pm, so get ready for an action-packed day of family fun in the heart of Eastwood.

The Festival is celebrating 39 years in 2024 and will feature old favourites and new activities, with amusement rides, market stalls, food trucks, performances, a youth zone, and kids' activities, ending the night with a not-to-be-missed grand finale and fireworks spectacular.

The secret to the Granny Smith Festival's enduring popularity is its community character which sees over 230 stallholders and 500 performing artists in attendance and up to 1,000 local participants proudly taking part in the grand street parade that kicks off the fun.

Last year's Festival attracted a bumper crowd estimated at 80,000, making it not only the City of Ryde's biggest day but also one of Sydney's best attended events.

Inside this issue you'll find a full run-down of what's happening at the 2024 Granny Smith Festival, so you'll be able to start planning your day early.

It truly is a day out not to be missed so round up your family and friends and get ready to enjoy an unforgettable experience.

News

Hsinchu Park MoU

The City of Ryde has taken the first step in opening its vital Macquarie Park Innovation District to the international semiconductor industry by signing a Memorandum of Understanding (MoU) with Taiwan's Hsinchu Science Park Bureau.

The MoU, digitally signed by both parties at formal ceremonies held simultaneously in Taiwan and at City of Ryde's Council Chambers on Tuesday 9 July 2024, was approved by Council at its meeting on Tuesday 24 October 2023.

Cooperation between Council and the Hsinchu Science Park – which houses the world's top two semiconductor companies among its more than 400 high-tech businesses – will focus on the advancement of the semiconductor industry, the biomedical industry, and the incubation of start-up companies.

The historic agreement means that Macquarie Park Innovation District can play a key role for Australia in an essential global industry that produces the computer chips needed to run everything from household appliances, smartphones and cars to submarines and medical equipment.

Under the terms of the MoU, City of Ryde and Hsinchu Science Park will work together on information sharing and technology collaboration, bilateral contacts and partnership development, and the encouragement of knowledge-based industries in both regions.

Eastwood Masterplan

Council endorsed the proposed vision of the Eastwood Masterplan at its July 2024 Meeting, marking the first steps of transformative action for one of our Local Government Area's (LGA) most important town centres.

The masterplan has been designed to collaboratively shape the future of Eastwood through a community-centred approach, ensuring that development and change are both sustainable and reflective of local needs and values.

It will tackle critical urban issues such as parking, traffic congestion, and flooding, while simultaneously laying down strategic frameworks for traffic and transport, housing, economic development and local strategic planning.

Central to the plan is the commitment to architectural and urban design excellence, guiding both the evolution of public spaces and private developments.

It will seek to protect Eastwood's character, open spaces and cultural identity, ensuring that growth is both appropriate and underpinned by adequate infrastructure. Additionally, the plan seeks to capitalise on the economic and access opportunities presented by the NSW Government's Ryde Hospital redevelopment.

At the July meeting, Council further endorsed the next phases of the Eastwood Masterplan, which include technical studies and masterplan drafting.

Connect with libraries

Volunteer at our libraries

Volunteering is a great way for you to connect with the community and to use your skills and time to help others. City of Ryde Libraries offer a whole range of programs and services, and there's opportunities to volunteer in children's programs, local history, English conversation teachers, or Justice of the Peace services. Submit your expression of interest and find out more at www.ryde.nsw.gov.au/LibraryVolunteer



Library Exhibition Program

We are calling for expressions of interest to hold an exhibition in one of our library gallery spaces. The aim of the Library Exhibition Program is to present a varied and informative arts and cultural program annually which connects to our local communities while supporting and showcasing the myriad of diverse creatives, artists and groups working across the Ryde local government area. Find out more at www.ryde.nsw.gov.au/LibraryExhibitions

Meadowbank netball courts



Council is seeking clarity from the NSW Government on the timeline surrounding the establishment of the West Ryde Multi-Sports Facility, which is to become the new home to the Eastwood Ryde Netball Association (ERNA).

The move follows a decision at Council's July 2024 Ordinary Meeting to continue annual audits of the existing 28 Meadowbank Park courts and the spending of up to \$50,000 per annum on defect repairs.

An audit undertaken in November 2023 identified 23 courts that have a range of defects such as cleaning, repainting, minor cracking, sinkholes, hydrostatic mounds, water ponding and trip hazards.

The audit and repairs will be carried out until ERNA transitions to the new facility at the former Marsden High School site.

Council further determined at the July meeting to write to NSW Education Minister Prue Car to reconfirm the State Government's commitment to delivering the netball facility at 22 Winbourne Street, West Ryde and to get an update on the timeline for the project.

Growing our canopy



We're committed to improving the green cover across our City. Trees and plants can help reduce surface temperatures, provide cleaner air and make the City of Ryde a better place to live and play.

As part of our dedication to this goal, we completed a street tree planting program which saw approximately 1,200 new street trees planted across the suburbs of Eastwood, Meadowbank, Denistone West and West Ryde.

This project received funding from the NSW Government's 'Greening our City' program.

Our efforts continued through to the National Tree Day event in July, our biggest one yet. Council staff and 168 enthusiastic volunteers rolled up their sleeves with 1,400 native trees, shrubs, grasses and groundcovers planted.

OVAL PERFORMANCE HIGHLIGHTS



• BLUEY LIVE EXPERIENCE

- DEAF PERCEPTION
- HOT POTATO BAND



• THE WIGGLES SOUND SYSTEM FEATURING DJ DOROTHY

- AMY CHASE BAND



Q&A WITH BIG STRONG JOHN FROM THE WIGGLES

What are you looking forward to most about performing at the Granny Smith Festival?

I'm really excited to be able to have a DJ dance party with everyone at the Granny Smith Festival as Dorothy the Dinosaur plays some of her favourite remixed wiggly tunes. It will be a fun nostalgic party for the whole family.

Are any of The Wiggles local to Ryde?

Yes, I was born and grew up in Ryde and used to attend the Granny Smith Festival as a child and teenager.

What is DJ Dorothy's favourite song to spin?

The Hot Potato remix is a great high energy track and Dorothy loves to see adults who grew up with The Wiggles and children dancing and singing along.

What is one thing you have learnt whilst being a Wiggle?

I have learnt the art of entertaining children and the importance and power of a smile. Watching The Wiggles as a child and now being able to have an influence on the next generation is an amazing, fulfilling feeling.



 City of Ryde
PRESENTS

LIFT OUT
FESTIVAL
GUIDE



**GRANNY
SMITH
FESTIVAL**

**SATURDAY
19 OCTOBER 2024**

**9.00am – 8.30pm
EASTWOOD**



FOR THE FULL ONLINE PROGRAM GO TO

RYDE.EVENTS/GSF

FESTIVAL HIGHLIGHTS



RYDE EASTWOOD LEAGUES CLUB PARADE

Find the perfect spot along Rowe Street at 9.30am for the Ryde Eastwood Leagues Club sponsored parade. See marching bands, dance groups, cultural performances and festival floats.



STALLS

With up to 230 stalls there's an epic amount of stalls to shop your heart out across the whole event! Make sure to check out the Granny Smith Festival webpage to see if your favourite stall will be there.



FESTIVAL STAGES

Support our local talent at one of our six festival stages, featuring a diverse lineup of singers, dance groups, bands, orchestras, and multicultural performances. Plus, kids can catch the Bluey Live Experience on the Oval Stage at 12.00pm and 2.00pm.



COMPETITIONS

You won't want to miss entering one of our competitions which include: The Big Apple Singing Competition and Apple Pie Eating Contest, plus more! There will be great prizes on offer. Register online if you think you have what it takes!



AFL PLAY FAMILY ZONE

Join us in the AFL PLAY Family Zone inside Eastwood Public School, with action packed fun for all ages! Test your kicking skills on our giant inflatable, challenge your family to a game of AFL23 on the PlayStation 5, and see if you have what it takes to take a leap on our jump test!



EASTWOOD PUBLIC SCHOOL

The school will come to life with plenty of activities for the whole family. Have your face painted, take a pony ride*, visit the animal farm and enjoy bubbles while dancing to the resident DJ. Capture a photo with Granny, grab a Granny Smith apple and refuel at the food hub with plenty of seating and shade options available!



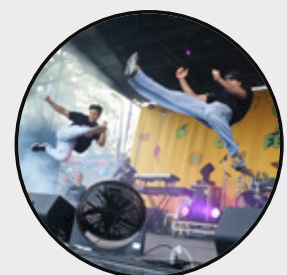
BUFFALO VALE GARDEN BAR

Relax at the Buffalo Vale Garden Bar on the Oval from 10.00am onwards. Sit back and enjoy the live entertainment while sipping apple-themed cocktails and gin, perfect for the Granny Smith Festival!



CARNIVAL FUN AND CAMEL RIDES

Head over to the Oval and West Parade for a carnival experience packed with rides and games for everyone. Ride coupons can be purchased at the ticket booths on the Oval and West Parade. Camel rides* are also available on the Top Oval from 10.00am – 3.00pm.



FINALE SHOW

The night kicks off with Deaf Perception performing on the Oval Stage. Come dance along with Hot Potato Band, while The Wiggles Sound System featuring DJ Dorothy keeps the kids entertained. We'll end the night with an epic performance by the family-friendly Amy Chase Band and a spectacular fireworks display at 8.00pm.

*Additional charges apply.

LEGEND

- POLICE
- BUS STOP
- TRAIN STATION
- PARKING
- ACCESSIBLE PARKING
- ACCESSIBLE DROP-OFF
- PARADE ROUTE
- ROAD CLOSURE
- PARADE ROAD CLOSURE 8.00 – 11.30AM
- ST JOHN FIRST AID / LOST CHILDREN
- BOTTLE AND REFILL BUBBLER STATION
- STAGE
- WALK WAY
- FOOD TRUCK
- SEATING
- FOOD HUB
- BAR AREA
- CITY OF RYDE STALL
- FESTIVAL INFORMATION STALL / LOST CHILDREN
- STALLS
- ACCESSIBLE TOILETS

FESTIVAL OPERATING HOURS

- Rowe Street, The Avenue and Eastwood Public School 9.00am – 3.30pm
- Progress Avenue and Hillview Road 9.00am – 4.30pm
- Eastwood Plaza 9.00am – 5.30pm
- Eastwood Oval and West Parade 9.00am – 8.30pm

GRANNY SMITH FESTIVAL

19 OCT 2024



FOOD HUBS AND SEATING

There will be two main food hubs located on West Parade near the train station and at Eastwood Public School that will consist of a range of different cuisines.

Grab some delicious food and take a seat at the allocated seating areas nearby to rest and recharge before heading off again to explore the Festival. This is also a great meeting spot to catch up with friends and family.



Look out for the food hub icon located on the Festival map.



PLAN YOUR TRIP



The Festival attracts a large crowd which can mean parking is limited. Leave the car at home and catch a bus, train or the Shop Ryder free shuttle service.

Visit Trip Planner at www.transportnsw.info to organise your journey from start to finish or visit ryde.events/GettingtoGSF

Scan the QR code for more details.



ACCESSIBLE DROP OFF ZONE



If you have a mobility parking permit and require close access to the Festival, use our Drop-off zone. Entry is via Trelawney Street located on the map. There is limited mobility parking located at Eastwood Shopping Centre and Glen Street car park.

INTERACTIVE MAP

Visit our interactive online map. Here you can navigate through the Festival and discover up to 230 stallholders.

Browse through a wide range of items from various artisan stalls or treat yourself to something new and unique.

View the map here: ryde.events/GSFmap



SPONSORS

PRESENTED BY

 City of Ryde



Lifestyle and opportunity at your doorstep

GOLD SPONSOR



SILVER SPONSORS



OPTUS



BRONZE SPONSORS



THANK YOU TO OUR EMERGENCY SERVICES



A big thank you to all of our emergency services from St John Ambulance, SES, Fire & Rescue NSW and NSW Police for contributing to the success of the Granny Smith Festival.

For more information about our emergency services on the day visit ryde.events/EmergencyServices



Ryde shines for People with Disability



We're inviting People with Disability to enter the Ryde Shine Ability Talent Competition! Whether your gift is singing, dancing, playing a musical instrument or another unique talent, we want to hear from you.

Up to eight (8) finalists will be selected to perform onstage at the North Ryde School of Arts on International Day of People with Disability (IDPWD) on 3 December.

Competition prizes total \$7,500. Winners will also receive a three-month contract with Diverse Talent Management and be invited to perform at Council events in 2025.

This competition is for People with Disability who are living, working, studying or participating in social activities in the City of Ryde.

Applications close on Friday 18 October 2024.

For more information, call 9952 8222 or visit www.ryde.nsw.gov.au/RydeShineAbility



Artist-in-Residence Program

Local painter and mixed media artist, Louisa Chan, has been selected for the 2024/2025 Artist-in-Residence Program.

Louisa utilises her art as a transformative language to uplift mental health, inspire and bring healing and engagement across diverse communities.

Louisa's aim is to demonstrate the power of art to enhance cognitive function, emotional resilience and overall mental health, thus contributing to a healthier, more connected community.

The Artist-in-Residence (AiR) Program focuses on the development of artists by providing recipients with a spacious studio environment in which to pursue and further extend their art practice.

The studio space is at Westward Cottage at 8 Turner Street Ryde. For more information, visit www.ryde.nsw.gov.au/AiR



Discover the Rhythms of Ryde, where every day spaces transform into extraordinary experiences through live music. From intimate pop-ups to vibrant drumming, Ryde bursts into life day and night.

You are invited to join this journey of music, connection and sensory exploration featuring local and visiting artists. Embrace the magic of live music. Embrace your Rhythm of Ryde.

For more information, visit www.ryde.nsw.gov.au/RhythmsofRyde

Saturday 9 November | Starry Starry Night at Lachlan's Line Park

Immerse yourself in this community al fresco event with enchanting melodies from Ryde's local string quartets.

Saturday 7 December | Drumming at Lachlan's Line Auditorium

Join renowned drummer Simon Barker for a masterclass and jam session where you'll dive into the depths of rhythmic expression.



City of Ryde

Youth Creative Competition 2024

Health and Wellbeing

There's still time to enter!

Entries close 31 October 2024

Open to young creatives aged 12-24 years who live, work or study in the City of Ryde.

Visit www.ryde.nsw.gov.au/CreativeComp



Have your say on the future of the City of Ryde

City of Ryde's Community Strategic Plan (CSP) outlines our vision, aspirations, and priorities for the City for the next 10 years and provides a high-level roadmap for how we will get there, together.

This long-term strategy responds to the latest forecasts on how the City will grow and change, ensuring the City of Ryde remains a vibrant place to live, work, and play.

A revised CSP is being developed to refine our collective vision, aspirational outcomes, and strategic priorities for the City from 2025 through to 2035.

We are providing our community and key stakeholders with opportunities to contribute to the revision of the plan to help us understand whether the key outcome areas from the current CSP are still relevant. Your input will help us ensure that our vision and priorities continue to reflect our community and guide our next Four-Year Delivery Program and One-Year Operational Plan.

For more information and to have your say on the future of the City of Ryde, please visit www.ryde.nsw.gov.au/HaveYourSay/CSP2035



Provide your feedback

Your feedback is important for the future of the City of Ryde.

We invite our community to share their views and suggestions on a variety of plans, projects, and proposals that may affect daily life. Community feedback plays an important role in decisions made by Council. So, if you live, work, or play in the City of Ryde, we want to hear from you!

Please visit our Have Your Say page at www.ryde.nsw.gov.au/HaveYourSay or scan the QR code below to see which topics are open for feedback. Be sure to check the Have Your Say page often to view any new consultations.



Scan to Have Your Say



Translation Assistance
한국어 | 中文

Getting rid of batteries the safe way



What do electronic toys, mobile phones, power tools and vapes have in common? They all contain batteries. Did you know that in Australia 10,000 fires are caused by batteries?

Batteries carry the real risk of sparking fires in waste trucks and processing facilities and should never be thrown away in kerbside bins. This includes batteries hidden inside toys, phones and vapes.

Any toy with lights, digital features or noise will generally contain a battery. All vapes use batteries, which may be rechargeable or removable while mobile phones also use batteries, which may be removable.

To safely manage and dispose of batteries inside your devices:

- Removable batteries that are no longer working can be taken to one of Council's problem waste stations. Supermarkets, electronics stores and shopping centres often have an accredited B-Cycle disposal station too. If the rest of the item contains electrical components, it can generally be recycled at the Northern Sydney Community Recycling Centre (CRC) as e-waste.
- Toys can be donated to Toys for Joy at Big W
- Mobile phones can be taken to one of Council's problem waste stations or any Mobile Muster drop-off point.
- The CRC in Artarmon accepts batteries, mobile phones and small electrical items.
- Used, removable batteries should be taped over at the terminals to prevent accidental sparking. This also reduces risks if accidentally swallowed by children or pets.
- Vape batteries can be disposed of in B-Cycle disposal stations found in supermarkets and shopping centres. Please remember to remove the battery from the vape before disposal.

Your one-stop drop-off point for recycling electronic devices and batteries is the CRC in Artarmon. The CRC accepts a number of hard to recycle household wastes. More details and opening hours can be found here www.ryde.nsw.gov.au/CRC.

Take charge of your battery waste and help maintain a safe working environment for waste service staff.

For more information, visit

www.ryde.nsw.gov.au/BatteryWaste

Customer Service Centre

Phone: 9952 8222

After hours assistance: 9952 8222

Email: cityofryde@ryde.nsw.gov.au

Address: 1 Pope Street, Ryde
(within Top Ryde City shopping centre)

Postal address:

Locked Bag 2069, North Ryde NSW 1670

Report an issue online: www.ryde.nsw.gov.au/report

www.ryde.nsw.gov.au

Social media:   /CityofRyde

Libraries

Ryde Library – 9952 8352

Address: 1 Pope Street, Ryde

Eastwood Library – 9952 8375

Address: Cnr Hillview Road and West Parade, Eastwood

Gladesville Library – 9952 8378

Address: 6 Pittwater Road, Gladesville

North Ryde Library – 9952 8377

Address: 201 Coxs Road, North Ryde

West Ryde Library – 9952 8376

Address: 2 Graf Avenue, West Ryde

Ryde Aquatic Leisure Centre

Address: 504 Victoria Road, Ryde

Enter carpark from Karen Moras Drive, Ryde
(between Margaret and Weaver Streets)

Phone: 8878 5111

This magazine is 100 percent recyclable.

Please place in your yellow lidded recycling bin when you're finished reading.

City of Ryde acknowledges the Traditional Custodians of this land, the Wallumedegal Clan of the Darug nation. Council also pays respect to Elders both past, present and emerging and extends that respect to other Aboriginal and Torres Strait Islander peoples.



Subscribe to
CITY NEWS

YOUR MONTHLY GUIDE TO
WHAT'S ON IN YOUR CITY

SCAN TO
SUBSCRIBE

