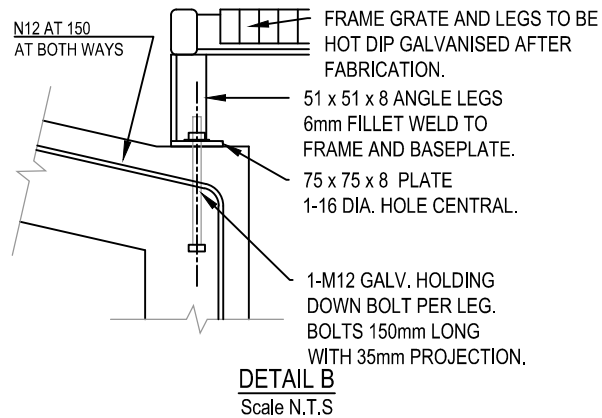


SURCHARGE GRATE

SURCHARGE PIT GRATES TO BE CLASS "C"
(REFER TO AS 3996)
GRATES ARE HINGED AND LOCKABLE.

NOTES

1. IN CASE THE PIT IS USED AS A SURCHARGE PIT THE COVER HAS TO BE SECURELY CONNECTED TO THE WALLS
2. STEP IRONS TO BE PROVIDED FOR PITS DEEPER THAN 1000mm AND PLACED ON A WALL CLEAR OF FLOW WHERE POSSIBLE REFER TO SWD.5.1.1 FOR DETAIL.
3. THE COMPRESSIVE STRENGTH OF ALL CONCRETE USED SHALL BE 25MPa AT 28 DAYS.
4. REFER TO SWD.9.1.1 FOR MINIMUM PIPE COVER.
5. ALL INTERNAL PIT CORNERS TO BE PROVIDED WITH BENCHING OR 30 RADIUS TO IMPROVE FLOW.
6. WHERE DEPTH EXCEEDS 1200mm WALLS TO BE REINFORCED IN ACCORDANCE WITH THE TABLE SHOWN ON SWD.1.1.1
7. PRE-CAST CONCRETE PITS MAY BE INSTALLED IN ACCORDANCE WITH MANUFACTURERS SPECIFICATIONS AND TO THE DIRECTION OF THE SUPERINTENDENT.
8. SELECTED GRANULAR MATERIAL BACKFILL SHALL BE PLACED TO FILL ALL EXCAVATED VOIDS. (REFER TO AS 3725-2007)
9. DN100 AGI DRAINAGE PIPE 3.0m LONG WRAPPED IN FABRIC SOCK TO BE PLACED ADJACENT TO INLET PIPES ON BOTH SIDES AND 100mm MINIMUM ABOVE PIT FLOOR. SURROUND SUBSOIL DRAINAGE PIPE/AGLINE WITH 7mm CLEAN BLUE METAL.
10. 50mm MINIMUM CONCRETE COVER UNLESS NOTED OTHERWISE.
11. ALL DIMENSIONS ARE IN MILLIMETRES UNLESS NOTED OTHERWISE (U.N.O.)



COPYRIGHT © 2011 City of Ryde - ALL RIGHTS RESERVED
No part of this document shall be modified or reproduced without written permission.
Go to www.ryde.nsw.gov.au/disclaimer to view the Standard Drawings Disclaimer

APPROVED VP DESIGN MANAGER	DATE 18/12/17..
DRAWING NUMBER	REVISION
SWD.1.7.3	B