

NOTES

1. ALL GRATED KERB INLET PITS (ON GRADE) SHALL BE PROVIDED WITH AN INLET AS SPECIFIED ON DESIGN DRAWINGS ON THE HIGHER SIDE OF THE PIT.
2. STEP IRONS TO BE PROVIDED FOR PITS DEEPER THAN 1000mm AND PLACED ON A WALL CLEAR OF FLOW WHERE POSSIBLE REFER TO SWD.5.1.1 FOR DETAIL.
3. THE COMPRESSIVE STRENGTH OF ALL CONCRETE USED SHALL BE 25MPa AT 28 DAYS.
4. REFER TO SWD.9.1.1 FOR MINIMUM PIPE COVER.
5. ALL INTERNAL PIT CORNERS TO BE PROVIDED WITH BENCHING OR 30 RADIUS TO IMPROVE FLOW.
6. WHERE DEPTH EXCEEDS 1200mm WALLS TO BE REINFORCED IN ACCORDANCE WITH THE TABLE SHOWN ON SWD.1.1.1
7. SELECTED GRANULAR MATERIAL BACKFILL SHALL BE PLACED TO FILL ALL EXCAVATED VOIDS. (REFER TO AS 3725-2007)
8. APPROVED PRE CAST CONCRETE PITS MAY BE USED IN ACCORDANCE WITH MANUFACTURERS SPECIFICATION AND TO THE DIRECTION OF THE SUPERINTENDENT.
9. DN100 AGI DRAINAGE PIPE 3.0m LONG WRAPPED IN FABRIC SOCK TO BE PLACED ADJACENT TO INLET PIPES ON BOTH SIDES AND 100mm MINIMUM ABOVE PIT FLOOR. SURROUND SUBSOIL DRAINAGE PIPE/AGLINE WITH 7mm CLEAN BLUE METAL.
10. 50mm MINIMUM CONCRETE COVER UNLESS NOTED OTHERWISE.
11. ALL DIMENSIONS ARE IN MILLIMETRES UNLESS NOTED OTHERWISE (U.N.O.)

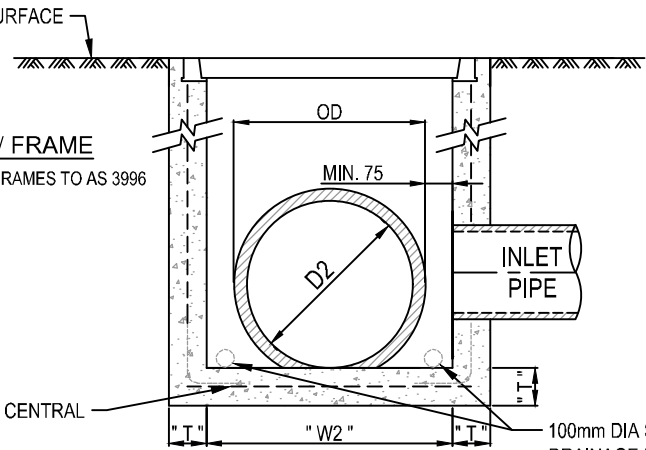
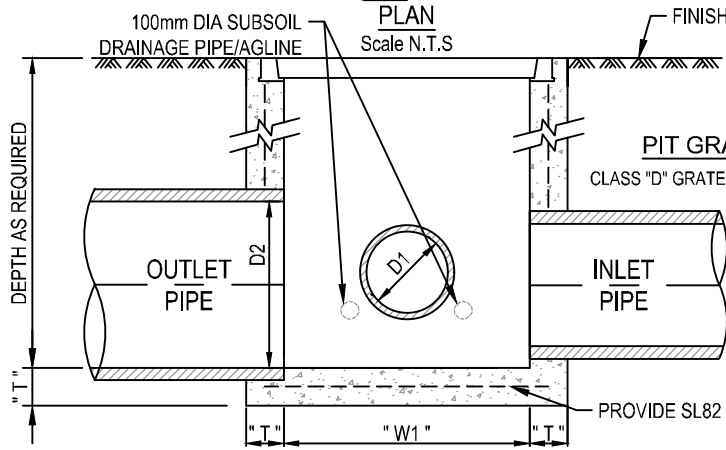
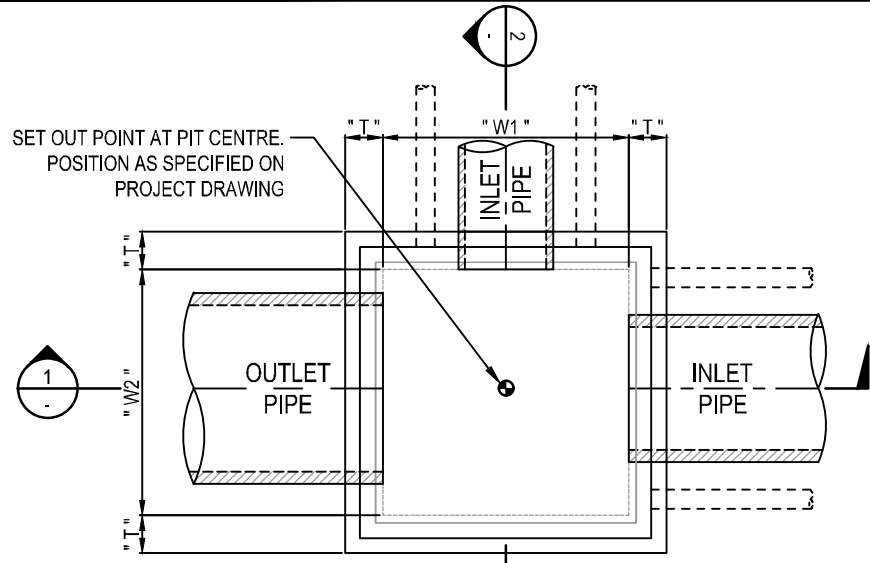
PIT DEPTH

0 - 2m	T = 150
2m - 2.5m	T = 200

PIT SIZE TABLE

INLET PIPE DIAMETER (D1)	MINIMUM PIT WIDTH (W1)	OUTLET PIPE DIAMETER (D2)	MINIMUM PIT WIDTH (W2)
225	600	225	600
300	600	300	600
375	600	375	600
450	600	450	600
525	680	525	680
600	760	600	760
675	830	675	830
750	900	750	900
825	990	825	990
900	1050	900	1050
1050	1200	1050	1200
1200	1370	1200	1370

PIT SIZE TABLE ONLY CONSIDERS PIPE CONNECTION PERPENDICULAR TO THE PIT WALL. MINIMUM 75mm CLEARANCE BETWEEN PIPE OD AND INTERNAL WALL FACE. INTERNAL PIT WIDTH SHALL BE INCREASED TO ACCOMMODATE THE PIPE AT AN ANGLE



COPYRIGHT © 2011 City of Ryde - ALL RIGHTS RESERVED
 No part of this document shall be modified or reproduced without written permission.
 Go to www.ryde.nsw.gov.au/disclaimer to view the Standard Drawings Disclaimer

ABN: 81 621 292 610
 LEVEL 1, BUILDING 0, BINARY CENTRE, 3 RICHARDSON PLACE, NORTH RYDE NSW 2113
 Locked Bag 2069
 NORTH RYDE NSW 1670
 Email: cityofryde@ryde.nsw.gov.au
 Web: www.ryde.nsw.gov.au
 Tel: (02) 9952 8222
 Fax: (02) 9952 9070

STANDARD DRAWING
STANDARD JUNCTION PIT

APPROVED VP DESIGN MANAGER	DATE 18/12/17
DRAWING NUMBER	REVISION
SWD.1.8.1	D



COPYRIGHT © 2011 City of Ryde - ALL RIGHTS RESERVED - No part of this document shall be reproduced without written permission.