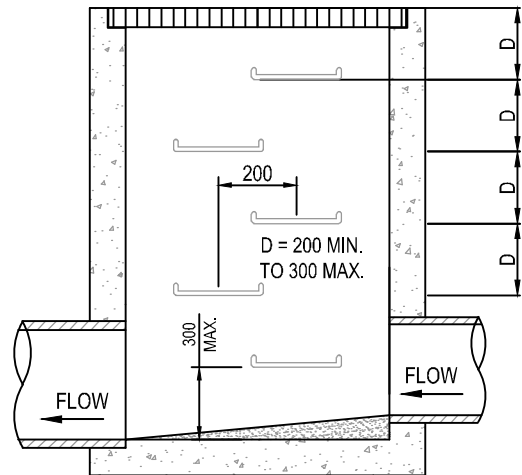
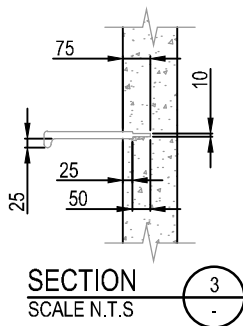


SECTION 1
SCALE N.T.S.

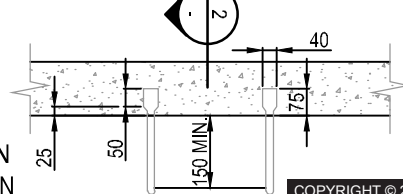


SECTION 2
SCALE N.T.S.



SECTION 3
SCALE N.T.S.

L = 350 FOR SINGLE COLUMN
L = 150 FOR DOUBLE COLUMN

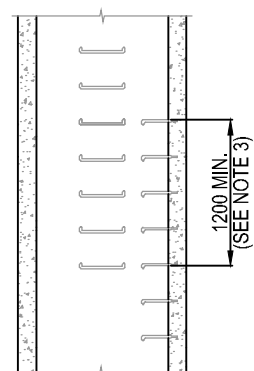


DETAIL A
Scale N.T.S.

COPYRIGHT © 2011 City of Ryde - ALL RIGHTS RESERVED
No part of this document shall be modified or reproduced without written permission.
Go to www.ryde.nsw.gov.au/disclaimer to view the Standard Drawings Disclaimer

NOTES:

- PITS DEEPER THAN 1200mm SHALL BE FITTED WITH STEP IRONS.
- STEP IRONS TO BE LOCATED:
 - DIRECTLY BELOW THE OPENING IN THE COVER.
 - DESIRABLY ON A WALL WITHOUT PIPE OPENINGS.
 - DESIRABLY ON ONE OF THE LONG SIDES OF THE PIT.
- IN SITUATIONS WHEN STEP IRONS ARE REQUIRED TO TRANSITION TO THE OTHER WALL FACE, AN OVERLAP OF 1.2m SHALL BE PROVIDED. SEE STEP IRONS OVERLAP DETAIL.
- MATERIAL FOR STEP-IRONS TO BE STRUCTURAL GRADE 250 MADE TO AS1204. STEP IRONS TO HAVE SHARP EDGES ROUNDED AND BE HOT-DIPPED GALVANIZED.
- PROPRIETARY STEPS SUCH AS THE GATIC PS2-PF POLYPROPYLENE STEPS (OR APPROVED EQUIVALENT) MAY BE USED AND INSTALLED ACCORDING TO THE MANUFACTURERS SPECIFICATIONS.
- ALL PITS TO BE LOCATED A MINIMUM OF 1000mm CLEAR OF VEHICLE CROSSINGS
- ALL DIMENSIONS IN MILLIMETRES UNLESS NOTED OTHERWISE.



STEP IRON OVERLAP
Scale N.T.S.