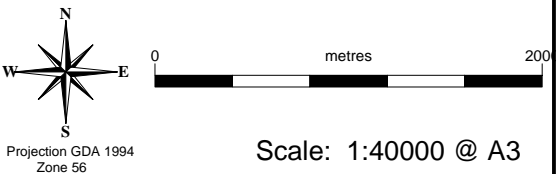
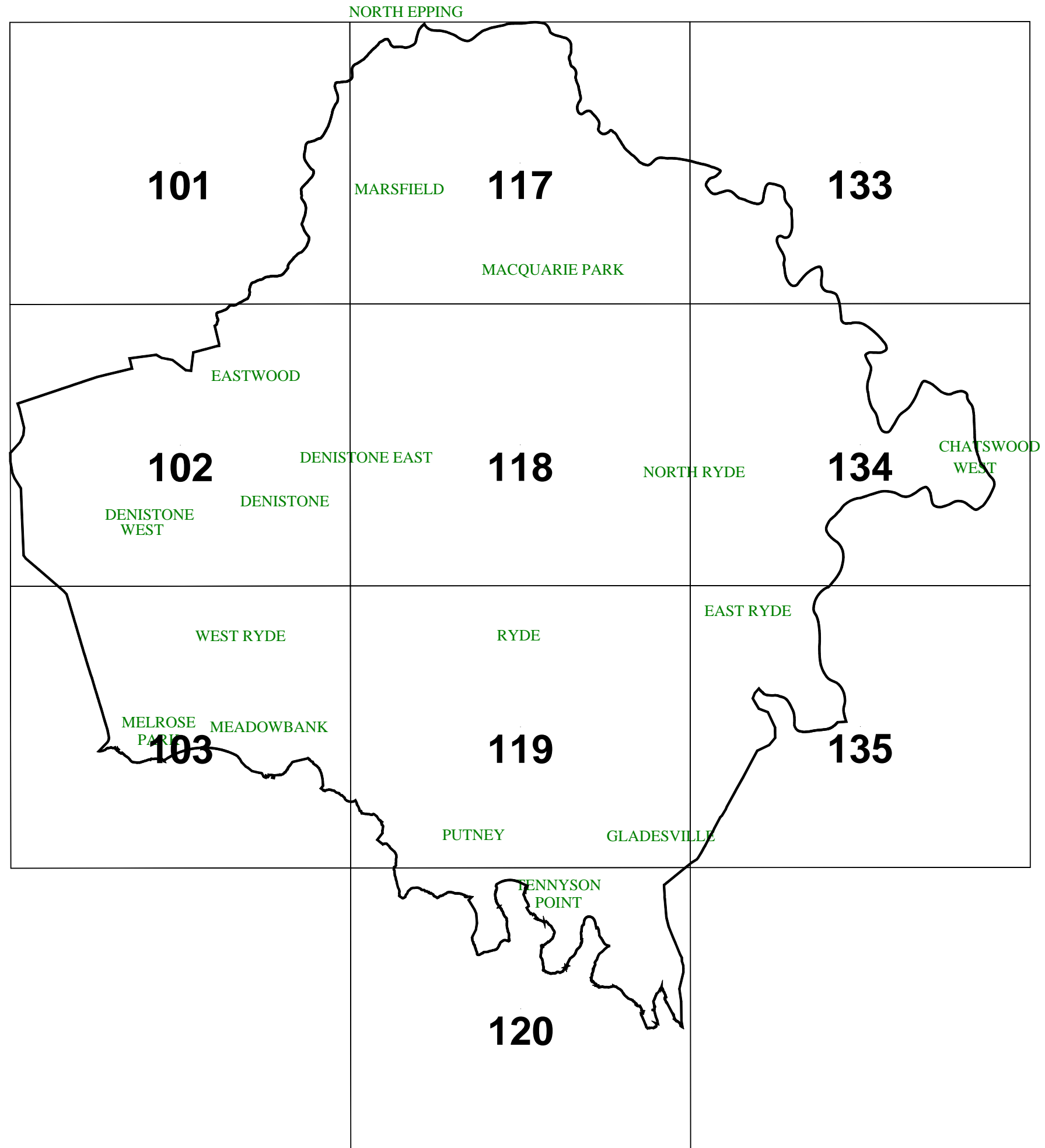




SHEET LOCATIONS



Map identification number: Map number	Authorized by:
As amended by:	





Ryde Section 94  
Development  
Contributions  
Plan 2007

Open Space and Recreation Facilities

Sheet No. OSR-101

Proposed Works

- 1

1. North Ryde Park  
a. Improvements 1 playing field  
b. Clubhouse and amenity buildings improvements  
c. Playground
- 2

2. Santa Rosa Park  
a. Improvements 3 playing fields  
b. Clubhouse and amenity buildings improvements  
c. Playground
- 3

3. Pidding Park - equivalent 2 full size fields
- 4

4. Ann Thorn park - refurbishment including play equipment
- 5

5. Memorial Park - refurbishment and landscaping
- 6

6. Fontenoy Park - redevelopment of unstructured open space
- 7

7. Ryde Park
- 8

8. Teenage/young adult playground
9. Boulevard tree planting
- 10

10. Foreshore Parks - Putney to Gladesville embellishment
- 11

11. Eastwood Park
- 12

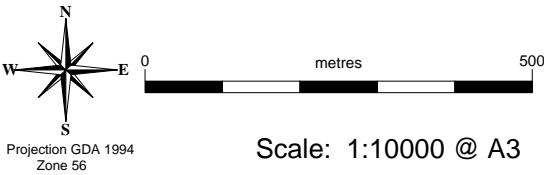
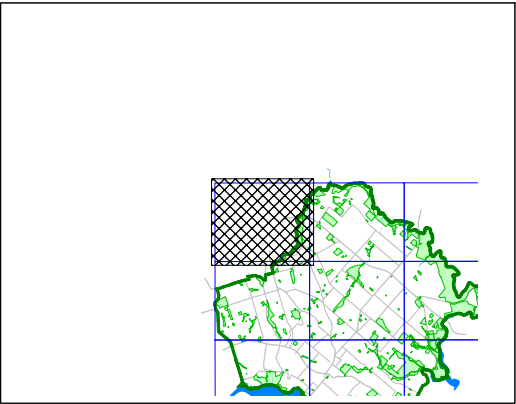
12. ELS Hall improvements
- 13

13. Shepherds Bay open space - land acquisition and improvements
- 14

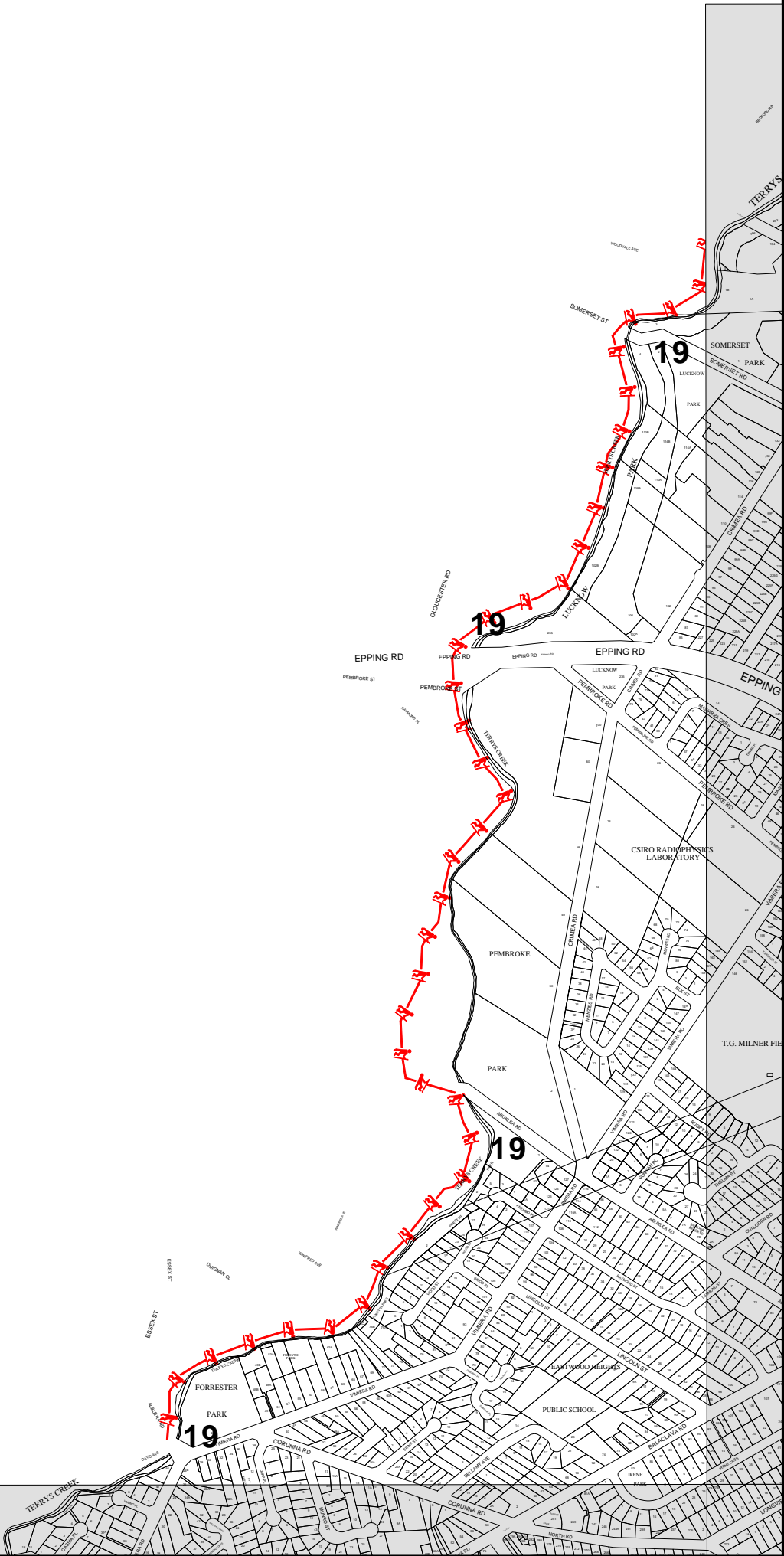
14. Meadowbank Park improvements
- 15

15. Macquarie Park  
a. New parks acquisition  
b. Linear parks construction
16. Kittys Creek Trail in Portius Park
17. Shrimptons Creek Trail
18. Buffalo Creek Trail
19. Terrys Creek Trail

Not all works might be included on this sheet  
Cadastre 29/10/2007 © Dept of Lands



Map identification number: 6700-CON-OSR-101-010-311207	Authorized by:
As amended by:	







# Ryde Section 94 Development Contributions Plan 2007

## Open Space and Recreation Facilities

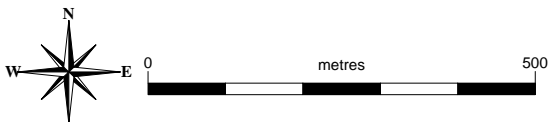
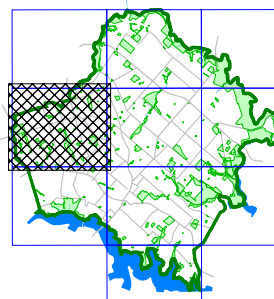
Sheet No. OSR-102

### Proposed Works

1. North Ryde Park
  - a. Improvements 1 playing field
  - b. Clubhouse and amenity buildings improvements
  - c. Playground
2. Santa Rosa Park
  - a. Improvements 3 playing fields
  - b. Clubhouse and amenity buildings improvements
  - c. Playground
3. Pidding Park - equivalent 2 full size fields
4. Ann Thorn park - refurbishment including play equipment
5. Memorial Park - refurbishment and landscaping
6. Fontenoy Park - redevelopment of unstructured open space
7. Ryde Park
8. Teenage/young adult playground
9. Boulevard tree planting
10. Foreshore Parks - Putney to Gladesville embellishment
11. Eastwood Park
12. ELS Hall improvements
13. Shepherds Bay open space - land acquisition and improvements
14. Meadowbank Park improvements
15. Macquarie Park
  - a. New parks acquisition
  - b. Linear parks construction
16. Kittys Creek Trail in Portius Park
17. Shrimptons Creek Trail
18. Buffalo Creek Trail
19. Terrys Creek Trail

Not all works might be included on this sheet

Cadastre 29/10/2007 © Dept of Lands



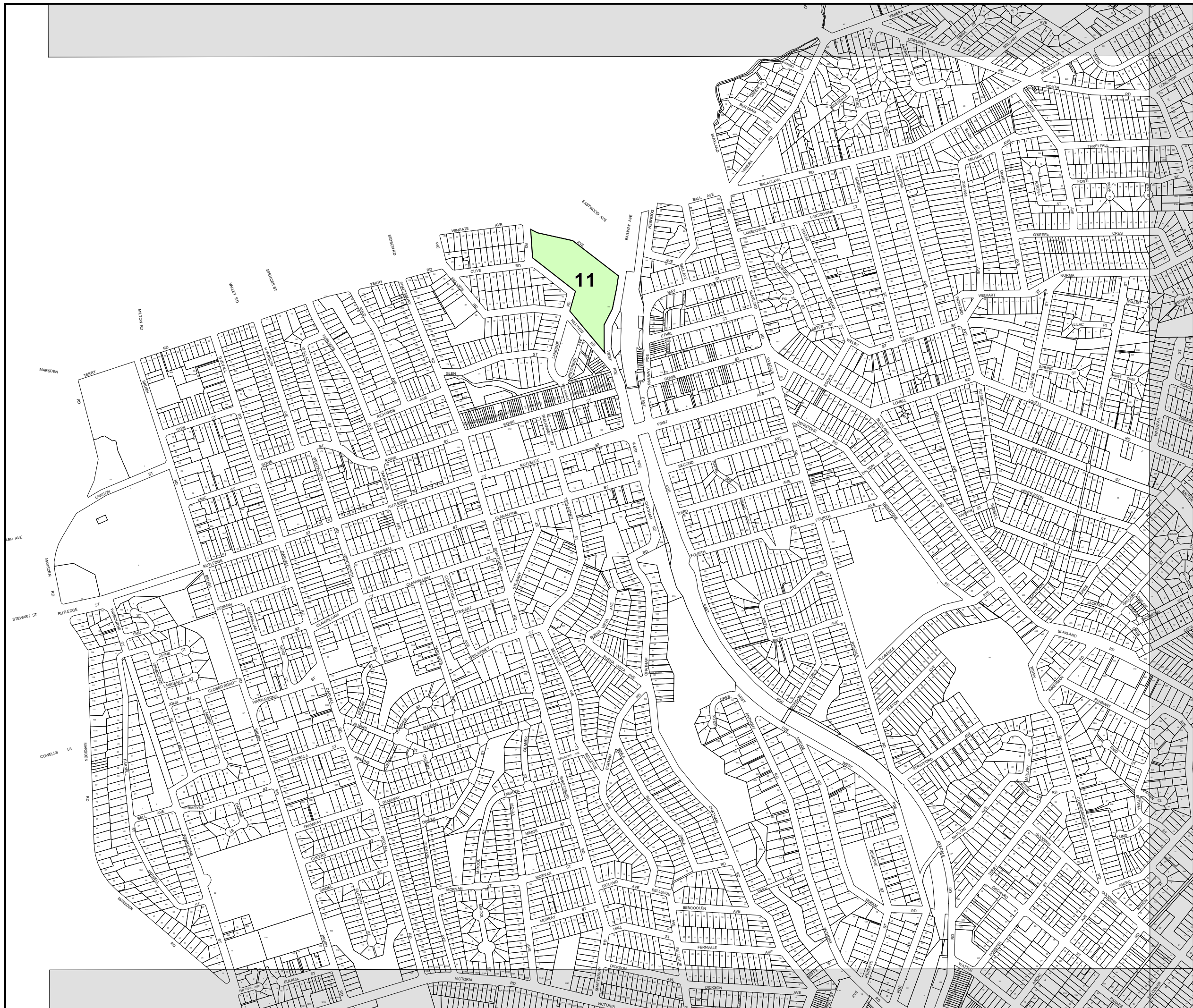
Projection GDA 1994  
Zone 56

Scale: 1:10000 @ A3

Map identification number:  
6700-CON-OSR-102-010-311207

Authorized by:

As amended by:







# Ryde Section 94 Development Contributions Plan 2007

## Open Space and Recreation Facilities

Sheet No. OSR-103

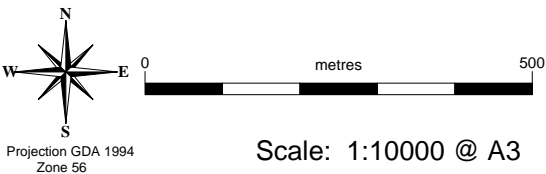
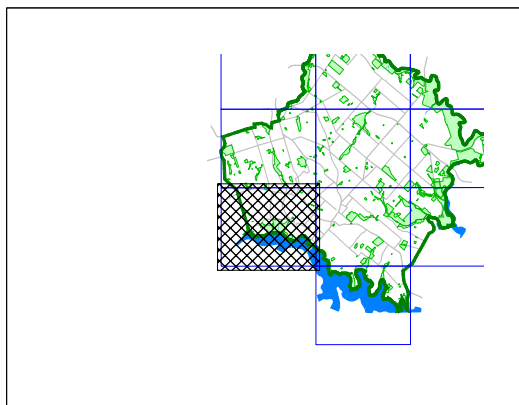
### Proposed Works

1. North Ryde Park
  - a. Improvements 1 playing field
  - b. Clubhouse and amenity buildings improvements
  - c. Playground
2. Santa Rosa Park
  - a. Improvements 3 playing fields
  - b. Clubhouse and amenity buildings improvements
  - c. Playground
3. Pidding Park - equivalent 2 full size fields
4. Ann Thorn park - refurbishment including play equipment
5. Memorial Park - refurbishment and landscaping
6. Fontenoy Park - redevelopment of unstructured open space
7. Ryde Park
8. Teenage/young adult playground
9. Boulevard tree planting
10. Foreshore Parks - Putney to Gladesville embellishment
11. Eastwood Park
12. ELS Hall improvements
13. Shepherds Bay open space - land acquisition and improvements
14. Meadowbank Park improvements
15. Macquarie Park
  - a. New parks acquisition
  - b. Linear parks construction

16. Kittys Creek Trail in Portius Park
17. Shrimptons Creek Trail
18. Buffalo Creek Trail
19. Terrys Creek Trail

Not all works might be included on this sheet

Cadastre 29/10/2007 © Dept of Lands

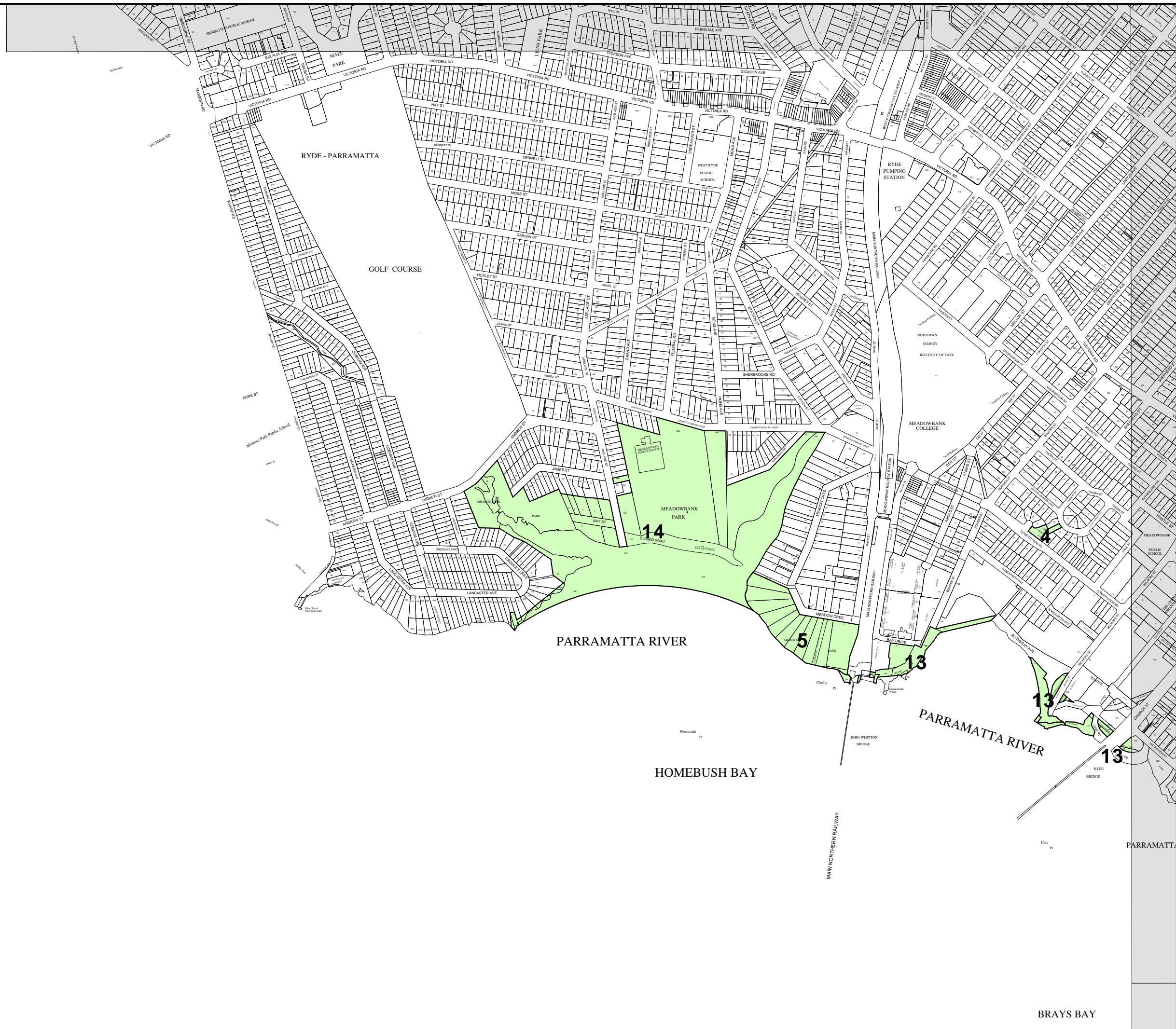


Scale: 1:10000 @ A3

Map identification number:  
6700-CON-OSR-103-010-311207

Authorized by:

As amended by:







# Ryde Section 94 Development Contributions Plan 2007

## Open Space and Recreation Facilities

Sheet No. OSR-117

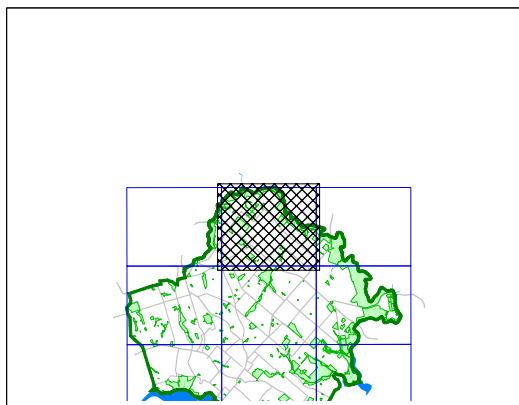
### Proposed Works

1. North Ryde Park
  - a. Improvements 1 playing field
  - b. Clubhouse and amenity buildings improvements
  - c. Playground
2. Santa Rosa Park
  - a. Improvements 3 playing fields
  - b. Clubhouse and amenity buildings improvements
  - c. Playground
3. Pidding Park - equivalent 2 full size fields
4. Ann Thorn park - refurbishment including play equipment
5. Memorial Park - refurbishment and landscaping
6. Fontenoy Park - redevelopment of unstructured open space
7. Ryde Park
8. Teenage/young adult playground
9. Boulevard tree planting
10. Foreshore Parks - Putney to Gladesville embellishment
11. Eastwood Park
12. ELS Hall improvements
13. Shepherds Bay open space - land acquisition and improvements
14. Meadowbank Park improvements
15. Macquarie Park
  - a. New parks acquisition
  - b. Linear parks construction

16. Kittys Creek Trail in Portius Park
17. Shrimptons Creek Trail
18. Buffalo Creek Trail
19. Terrys Creek Trail

Not all works might be included on this sheet

Cadastre 29/10/2007 © Dept of Lands

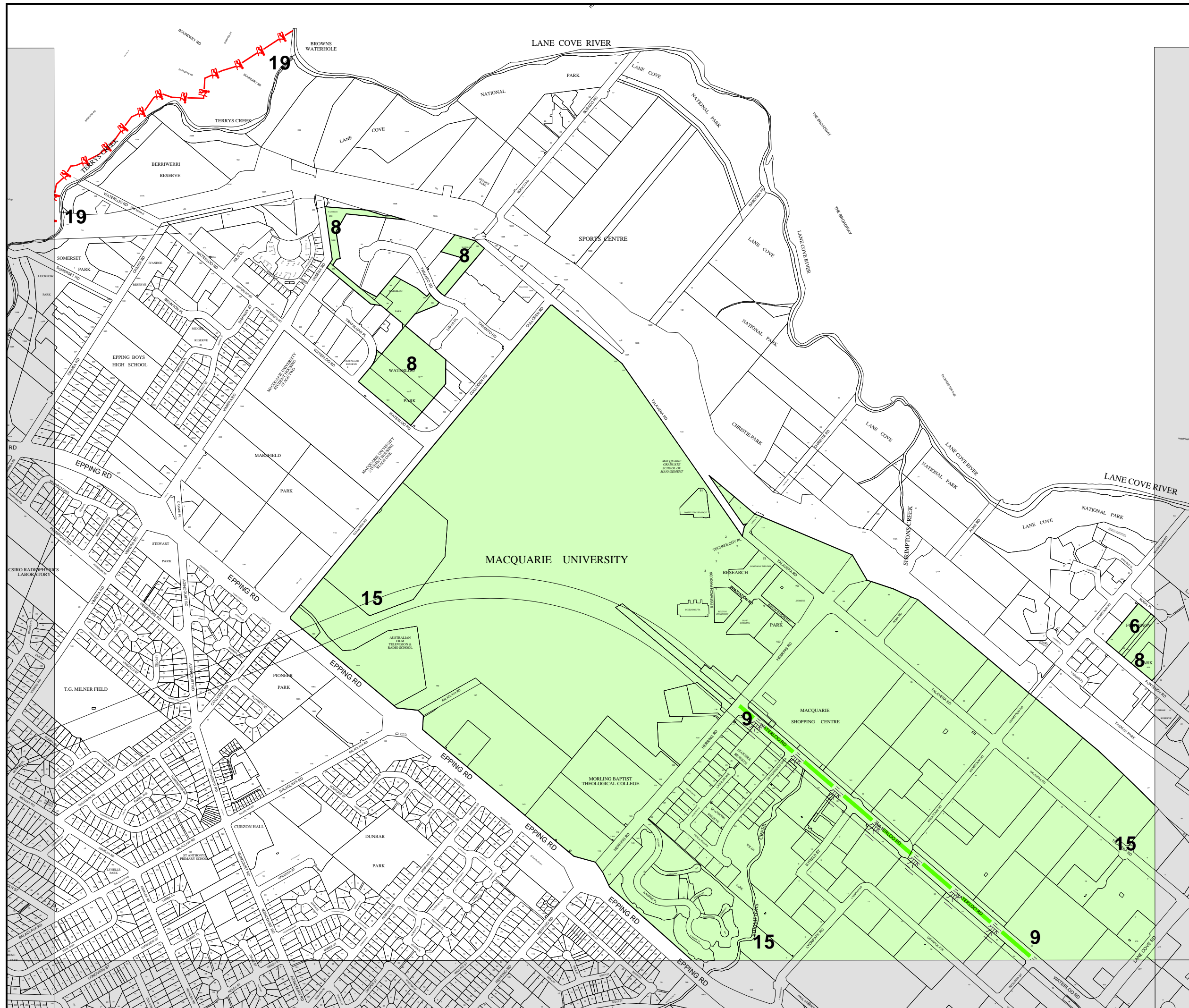


Scale: 1:10000 @ A3

Map identification number:  
6700-CON-OSR-117-010-311207

As amended by:

Authorized by:







# Ryde Section 94 Development Contributions Plan 2007

## Open Space and Recreation Facilities

Sheet No. OSR-118

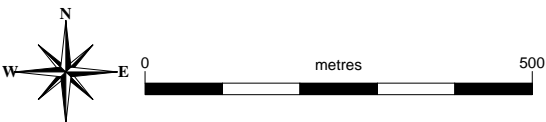
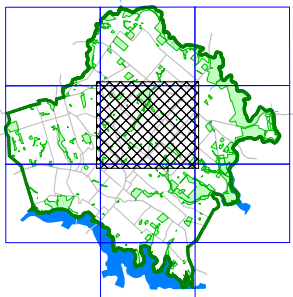
### Proposed Works

1. North Ryde Park
  - a. Improvements 1 playing field
  - b. Clubhouse and amenity buildings improvements
  - c. Playground
2. Santa Rosa Park
  - a. Improvements 3 playing fields
  - b. Clubhouse and amenity buildings improvements
  - c. Playground
3. Pidding Park - equivalent 2 full size fields
4. Ann Thorn park - refurbishment including play equipment
5. Memorial Park - refurbishment and landscaping
6. Fontenoy Park - redevelopment of unstructured open space
7. Ryde Park
8. Teenage/young adult playground
9. Boulevard tree planting
10. Foreshore Parks - Putney to Gladesville embellishment
11. Eastwood Park
12. ELS Hall improvements
13. Shepherds Bay open space - land acquisition and improvements
14. Meadowbank Park improvements
15. Macquarie Park
  - a. New parks acquisition
  - b. Linear parks construction

16. Kittys Creek Trail in Portius Park
17. Shrimptons Creek Trail
18. Buffalo Creek Trail
19. Terrys Creek Trail

Not all works might be included on this sheet

Cadastre 29/10/2007 © Dept of Lands



Projection GDA 1994  
Zone 56

Scale: 1:10000 @ A3

Map identification number:  
6700-CON-OSR-118-010-311207

Authorized by:

As amended by:







# Ryde Section 94 Development Contributions Plan 2007

## Open Space and Recreation Facilities

Sheet No. OSR-119

### Proposed Works

- 1

1. North Ryde Park  
a. Improvements 1 playing field  
b. Clubhouse and amenity buildings improvements  
c. Playground
- 2

2. Santa Rosa Park  
a. Improvements 3 playing fields  
b. Clubhouse and amenity buildings improvements  
c. Playground
- 3

3. Pidding Park - equivalent 2 full size fields
- 4

4. Ann Thorn park - refurbishment including play equipment
- 5

5. Memorial Park - refurbishment and landscaping
- 6

6. Fontenoy Park - redevelopment of unstructured open space
- 7

7. Ryde Park
- 8

8. Teenage/young adult playground
- 9

9. Boulevard tree planting
- 10

10. Foreshore Parks - Putney to Gladesville embellishment
- 11

11. Eastwood Park
- 12

12. ELS Hall improvements
- 13

13. Shepherds Bay open space - land acquisition and improvements
- 14

14. Meadowbank Park improvements
- 15

15. Macquarie Park  
a. New parks acquisition  
b. Linear parks construction
- 16

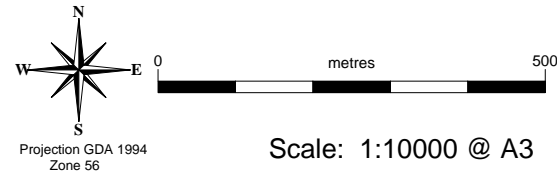
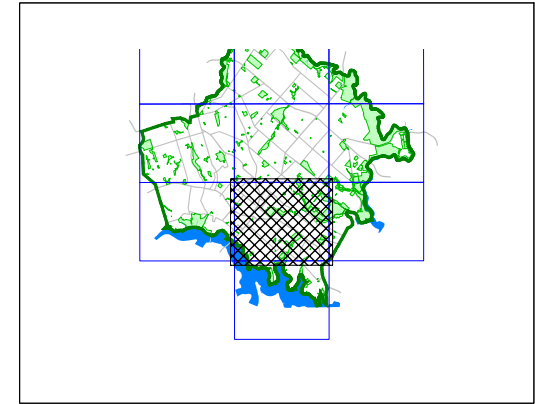
16. Kittys Creek Trail in Portius Park
- 17

17. Shrimptons Creek Trail
- 18

18. Buffalo Creek Trail
- 19

19. Terrys Creek Trail

Not all works might be included on this sheet  
Cadastre 29/10/2007 © Dept of Lands



Map identification number: 6700-CON-OSR-119-010-311207  
Authorized by:  
As amended by:







Ryde Section 94  
Development  
Contributions  
Plan 2007

Open Space and Recreation Facilities

Sheet No. OSR-120

Proposed Works

- 1

1. North Ryde Park  
a. Improvements 1 playing field  
b. Clubhouse and amenity buildings improvements  
c. Playground
- 2

2. Santa Rosa Park  
a. Improvements 3 playing fields  
b. Clubhouse and amenity buildings improvements  
c. Playground
- 3

3. Pidding Park - equivalent 2 full size fields
- 4

4. Ann Thorn park - refurbishment including play equipment
- 5

5. Memorial Park - refurbishment and landscaping
- 6

6. Fontenoy Park - redevelopment of unstructured open space
- 7

7. Ryde Park
- 8

8. Teenage/young adult playground
- 9

9. Boulevard tree planting
- 10

10. Foreshore Parks - Putney to Gladesville embellishment
- 11

11. Eastwood Park
- 12

12. ELS Hall improvements
- 13

13. Shepherds Bay open space - land acquisition and improvements
- 14

14. Meadowbank Park improvements
- 15

15. Macquarie Park  
a. New parks acquisition  
b. Linear parks construction
- 16

16. Kittys Creek Trail in Portius Park
- 17

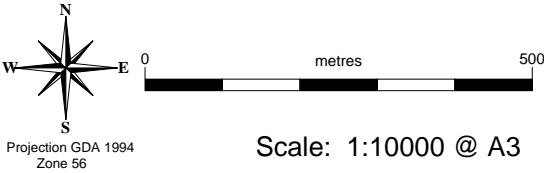
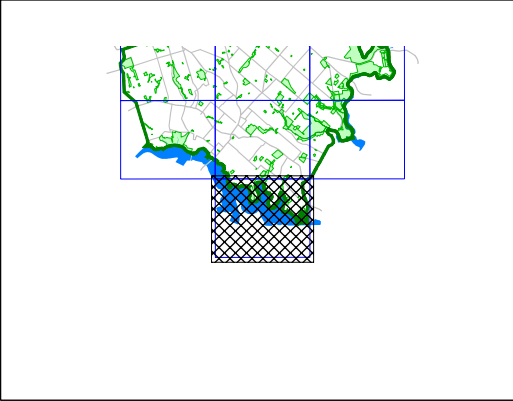
17. Shrimptons Creek Trail
- 18

18. Buffalo Creek Trail
- 19

19. Terrys Creek Trail

Not all works might be included on this sheet

Cadastre 29/10/2007 © Dept of Lands







Ryde Section 94  
Development  
Contributions  
Plan 2007

Open Space and Recreation Facilities

Sheet No. OSR-133

Proposed Works

- 1

1. North Ryde Park  
a. Improvements 1 playing field  
b. Clubhouse and amenity buildings improvements  
c. Playground
- 2

2. Santa Rosa Park  
a. Improvements 3 playing fields  
b. Clubhouse and amenity buildings improvements  
c. Playground
- 3

3. Pidding Park - equivalent 2 full size fields
- 4

4. Ann Thorn park - refurbishment including play equipment
- 5

5. Memorial Park - refurbishment and landscaping
- 6

6. Fontenoy Park - redevelopment of unstructured open space
- 7

7. Ryde Park
- 8

8. Teenage/young adult playground
- 9

9. Boulevard tree planting
- 10

10. Foreshore Parks - Putney to Gladesville embellishment
- 11

11. Eastwood Park
- 12

12. ELS Hall improvements
- 13

13. Shepherds Bay open space - land acquisition and improvements
- 14

14. Meadowbank Park improvements
- 15

15. Macquarie Park  
a. New parks acquisition  
b. Linear parks construction
- 16

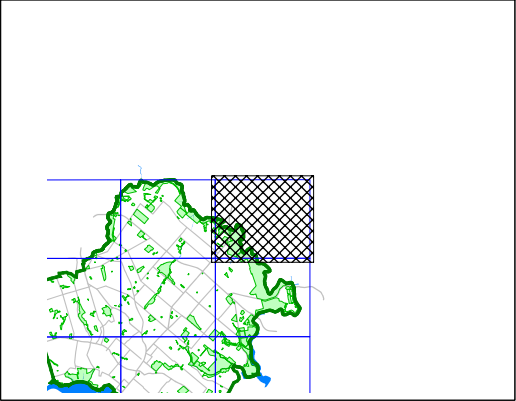
16. Kittys Creek Trail in Portius Park
- 17

17. Shrimptons Creek Trail
- 18

18. Buffalo Creek Trail
- 19

19. Terrys Creek Trail

Not all works might be included on this sheet  
Cadastre 29/10/2007 © Dept of Lands



N

E

S

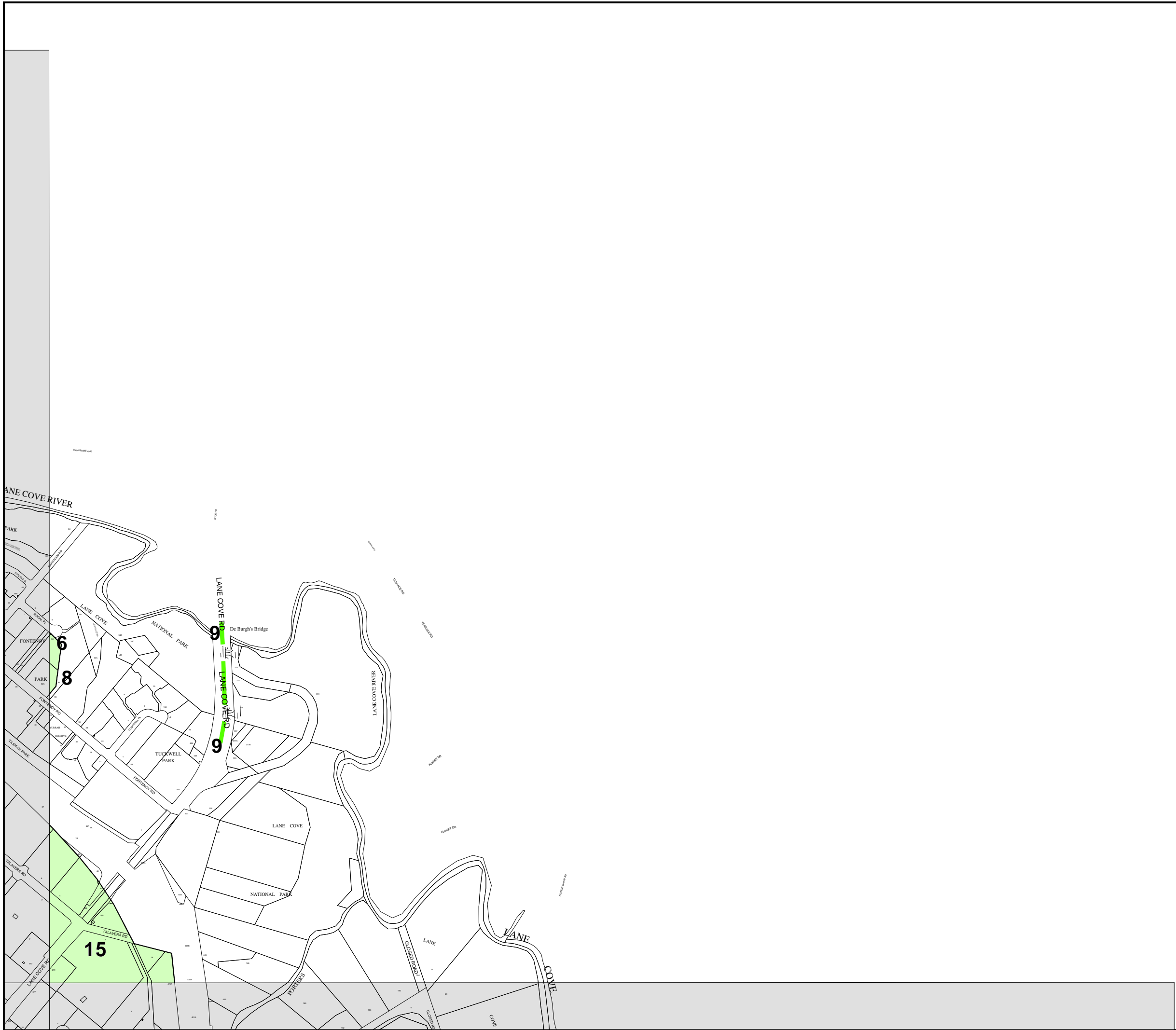
W

0metres500

Projection GDA 1994  
Zone 56

Scale: 1:10000 @ A3

Map identification number: 6700-CON-OSR-133-010-311207	Authorized by:
As amended by:	







# Ryde Section 94 Development Contributions Plan 2007

## Open Space and Recreation Facilities

Sheet No. OSR-134

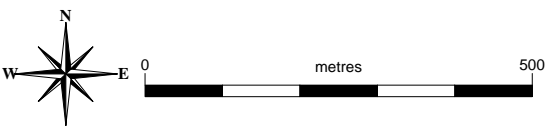
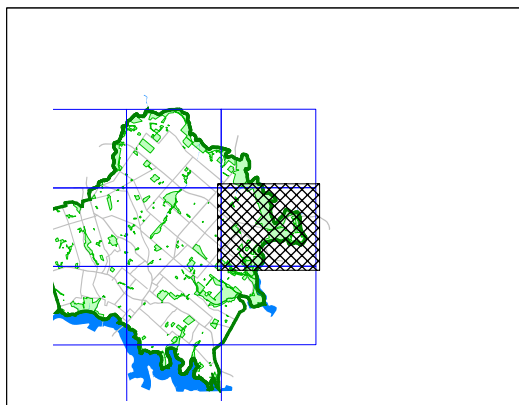
### Proposed Works

1. North Ryde Park
  - a. Improvements 1 playing field
  - b. Clubhouse and amenity buildings improvements
  - c. Playground
2. Santa Rosa Park
  - a. Improvements 3 playing fields
  - b. Clubhouse and amenity buildings improvements
  - c. Playground
3. Pidding Park - equivalent 2 full size fields
4. Ann Thorn park - refurbishment including play equipment
5. Memorial Park - refurbishment and landscaping
6. Fontenoy Park - redevelopment of unstructured open space
7. Ryde Park
8. Teenage/young adult playground
9. Boulevard tree planting
10. Foreshore Parks - Putney to Gladesville embellishment
11. Eastwood Park
12. ELS Hall improvements
13. Shepherds Bay open space - land acquisition and improvements
14. Meadowbank Park improvements
15. Macquarie Park
  - a. New parks acquisition
  - b. Linear parks construction

16. Kittys Creek Trail in Portius Park
17. Shrimptons Creek Trail
18. Buffalo Creek Trail
19. Terrys Creek Trail

Not all works might be included on this sheet

Cadastre 29/10/2007 © Dept of Lands



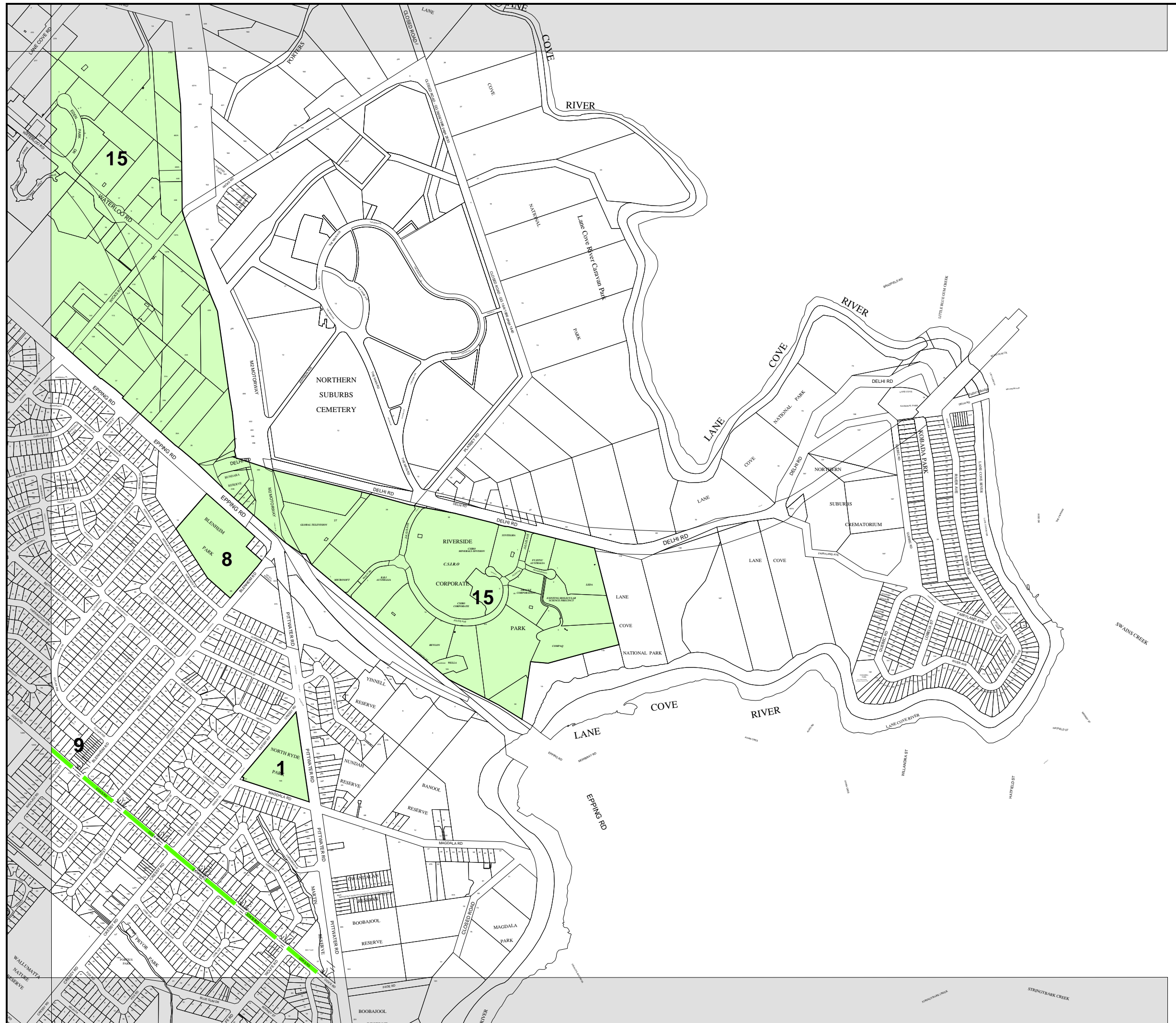
Projection GDA 1994  
Zone 56

Scale: 1:10000 @ A3

Map identification number:  
6700-CON-OSR-134-010-311207

Authorized by:

As amended by:







# Ryde Section 94 Development Contributions Plan 2007

## Open Space and Recreation Facilities

Sheet No. OSR-135

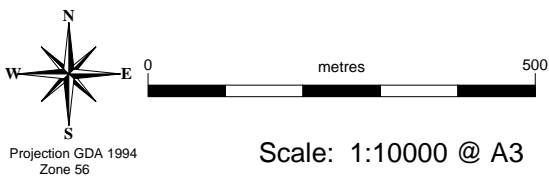
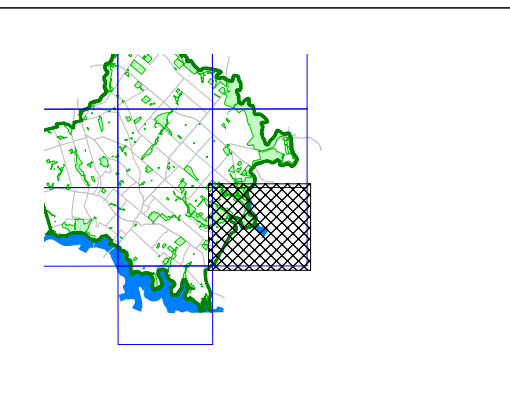
### Proposed Works

1. North Ryde Park
  - a. Improvements 1 playing field
  - b. Clubhouse and amenity buildings improvements
  - c. Playground
2. Santa Rosa Park
  - a. Improvements 3 playing fields
  - b. Clubhouse and amenity buildings improvements
  - c. Playground
3. Pidding Park - equivalent 2 full size fields
4. Ann Thorn park - refurbishment including play equipment
5. Memorial Park - refurbishment and landscaping
6. Fontenoy Park - redevelopment of unstructured open space
7. Ryde Park
8. Teenage/young adult playground
9. Boulevard tree planting
10. Foreshore Parks - Putney to Gladesville embellishment
11. Eastwood Park
12. ELS Hall improvements
13. Shepherds Bay open space - land acquisition and improvements
14. Meadowbank Park improvements
15. Macquarie Park
  - a. New parks acquisition
  - b. Linear parks construction

16. Kittys Creek Trail in Portius Park
17. Shrimptons Creek Trail
18. Buffalo Creek Trail
19. Terrys Creek Trail

Not all works might be included on this sheet

Cadastre 29/10/2007 © Dept of Lands



Map identification number:  
6700-CON-OSR-135-010-311207

As amended by:

Authorized by:

