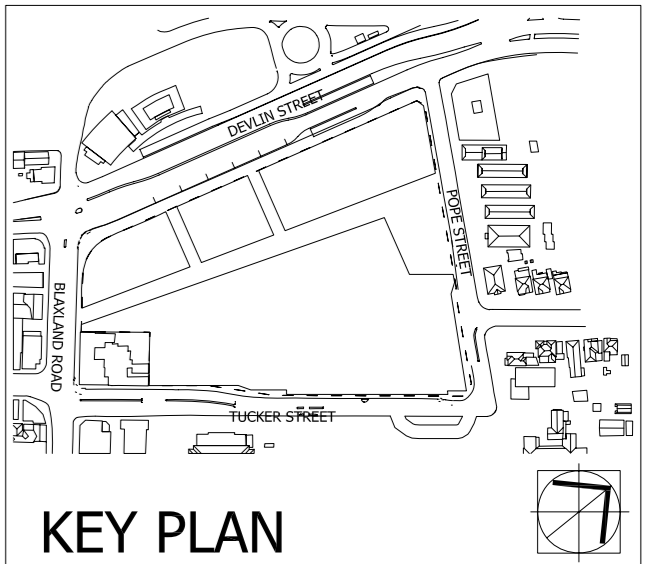


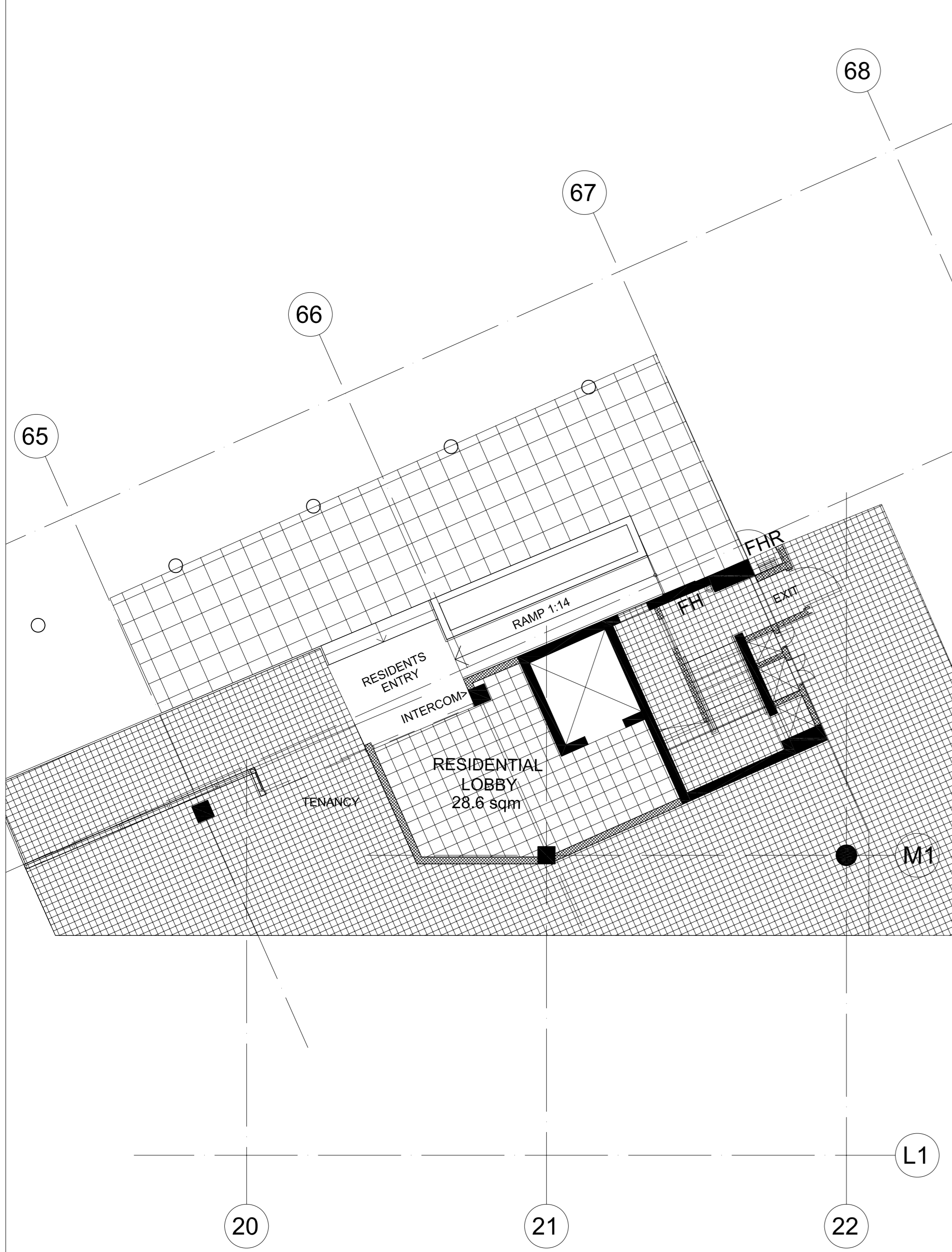
These designs, plans and specifications and the copyright therein are the property of Bovis Lend Lease Pty Limited and must not be used, reproduced or copied wholly or in part without the written permission of Bovis Lend Lease.



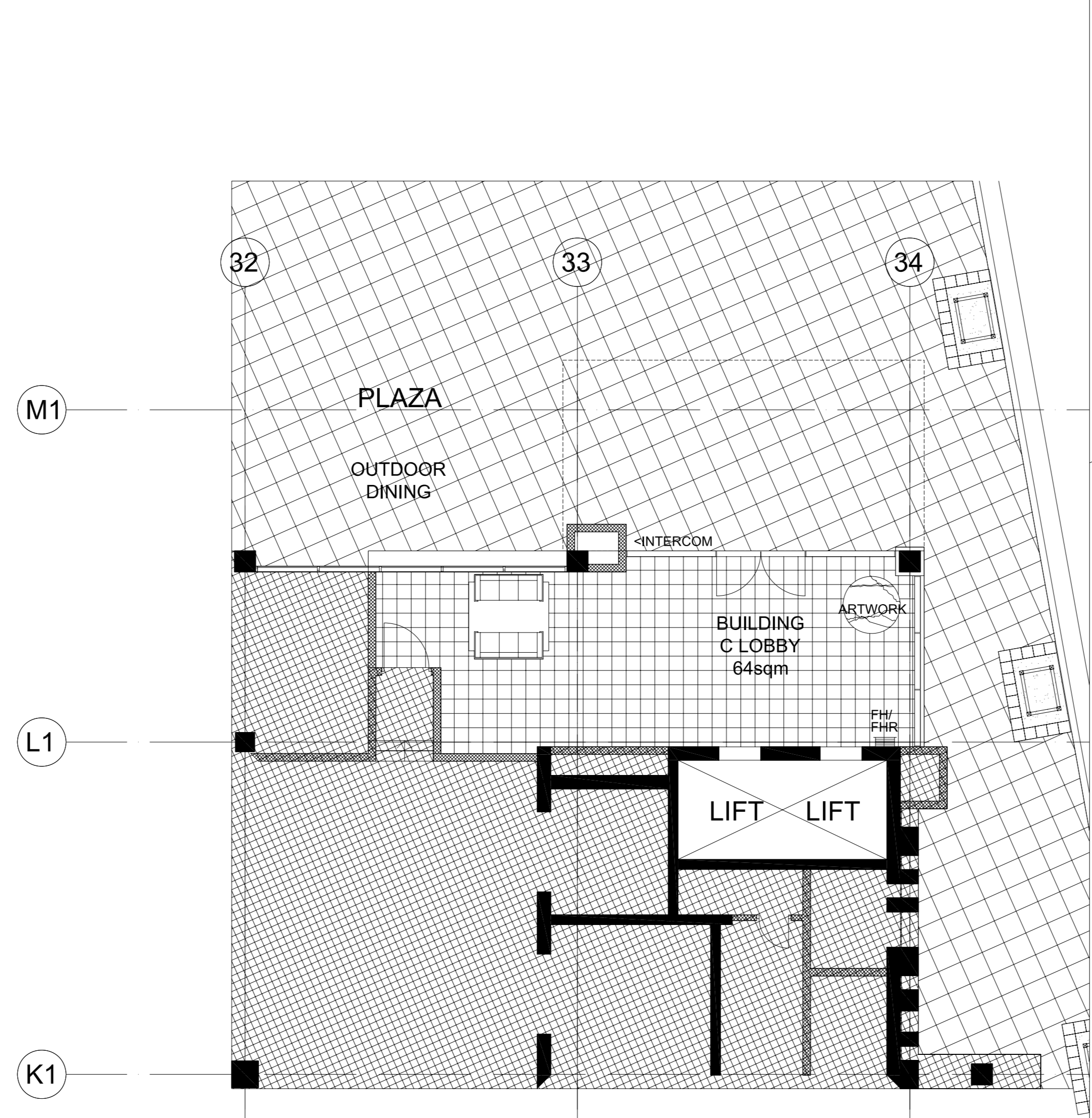
KEY PLAN

DA SUBMISSION

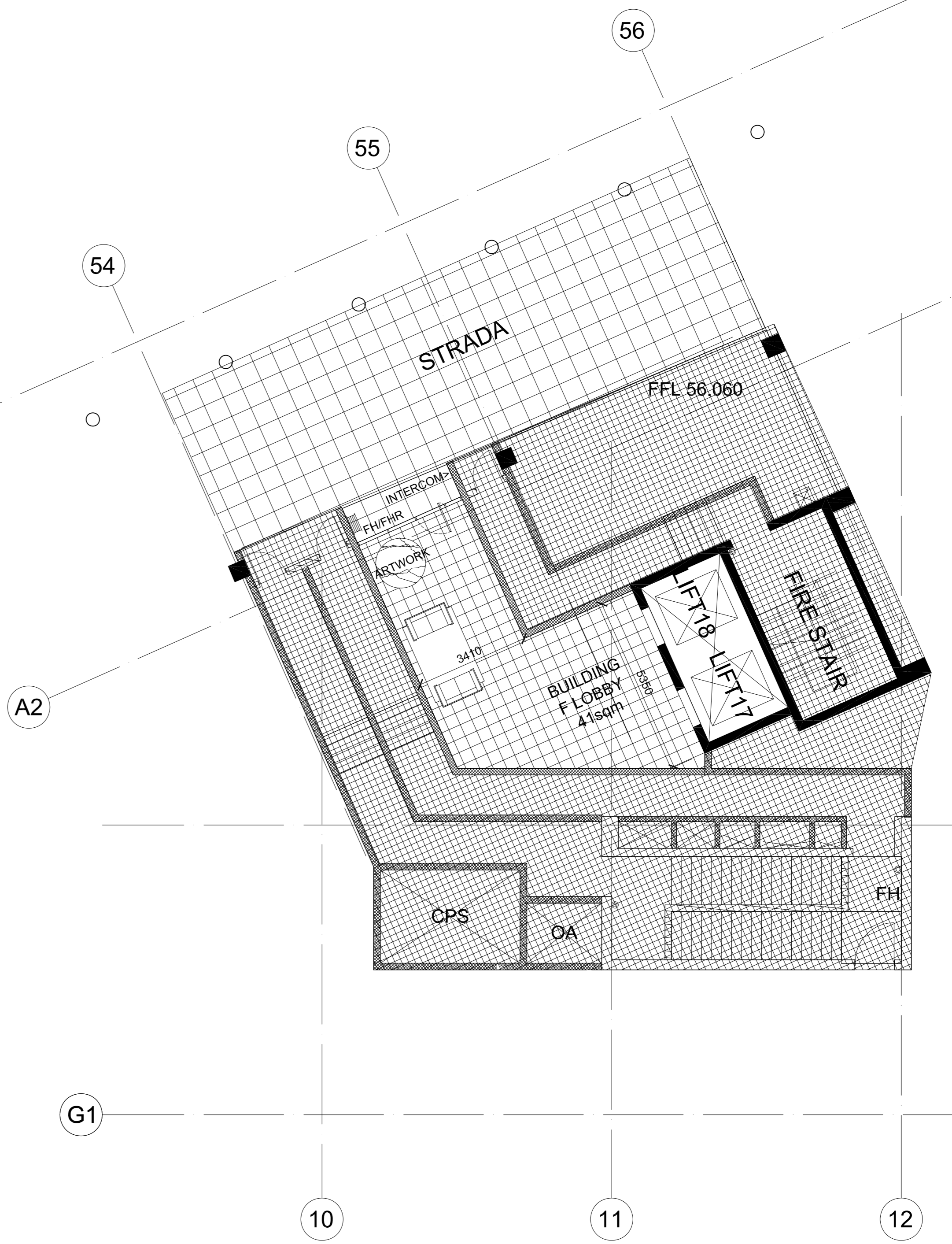
BDG B LOBBY



BDG C LOBBY



BDG F LOBBY



P6	FINAL ISSUE FOR COMMENTS (M+P)	05.06.08
P6	FINAL ISSUE FOR COMMENTS (M+P)	18.07.08
P7	PRELIMINARY ISSUE (M+P)	18.06.08
O1	DA SUBMISSION	27.10.08
REVISION	DESCRIPTION	DATE



Project Management:
Bovis Lend Lease Pty. Limited
 30 The Bovey St, Rosewood Road
 Millers Point NSW 2000

Master Planner and Master Architect:
Lend Lease design
 Architect: Graham Warwick Jones
 Registration No. 4005

Retail Architects:
Lend Lease design in collaboration with Krikis Tayler Retail
 Architect: Nicholas Taylor
 Registration No. 5686

Residential Architects:
Marchese & Partners International Pty Ltd
 Architect: Steven Zappala
 Registration No. 6325

Landscape Architects:
Oculus Landscape Architects
 Landscape Architect: Robert Earl
 Registration No. 000511

Commercial Architects:
Lend Lease design in collaboration with Krikis Tayler Architects

Client Representative
WT Partnership Aust. Pty. Ltd.
 Level 25, Northpoint, 100 Miller Street
 North Sydney NSW 1585



PROJECT
TOP RYDE SHOPPING CENTRE REDEVELOPMENT STAGE 2

DRAWING TITLE
DA STAGE 1 RESIDENTIAL LOBBY PLAN

DRAWN 06001 JL CHECKED ML
 PROJECT NO. 06001

SCALE 1:100 @ B1 SIZE

DRAWING NO. ISSUE
DA2 2.14 P8