

CONCEPT PROPOSAL BUILDING ENVELOPES
(BUILDING DESIGNS WITHIN CONCEPT ENVELOPES ARE INDICATIVE ONLY AND SUBJECT TO FUTURE DEVELOPMENT APPLICATIONS)

CONCEPT PROPOSAL BUILDING ENVELOPES
(BUILDING DESIGNS WITHIN CONCEPT ENVELOPES ARE INDICATIVE ONLY AND SUBJECT TO FUTURE DEVELOPMENT APPLICATIONS)

DA Building B & F
August 2008



- KEY - PROPOSED USAGE
- SHOP
 - REFRESHMENT ROOM
 - COMMERCIAL PREMISES
 - RECREATION AREA
 - COMMUNITY FACILITIES
 - PLACE OF ASSEMBLY
 - CHILD CARE CENTRE
 - PLACE OF PUBLIC WORSHIP
 - RESIDENTIAL
- THE FOLLOWING USAGES ARE EXCLUDED FROM THE DEFINITION OF N.U.F.A. (NET USABLE FLOOR AREA)
- MALL / CIRCULATION
 - CORE ELEMENTS / VERTICAL TRANSPORT
 - FIRE STAIRS / PASSAGES
 - SERVICE AREAS / AMENITIES / R.O.M.
 - TRAFFIC - ENTRY
 - TRAFFIC - EXIT
 - BELOW GROUND



Bovis
Lend Lease

Prepared by:
Bovis Lend Lease Pty. Limited
100 Victoria Road
Sydney NSW 2000

Land Lease design:
KIMBLE TAYLOR ARCHITECTS
100 Victoria Road
Sydney NSW 2000

Author:
Mackenzie & Partners International Pty Ltd
100 Victoria Road
Sydney NSW 2000

Author:
Douglas Landscape Architects
100 Victoria Road
Sydney NSW 2000

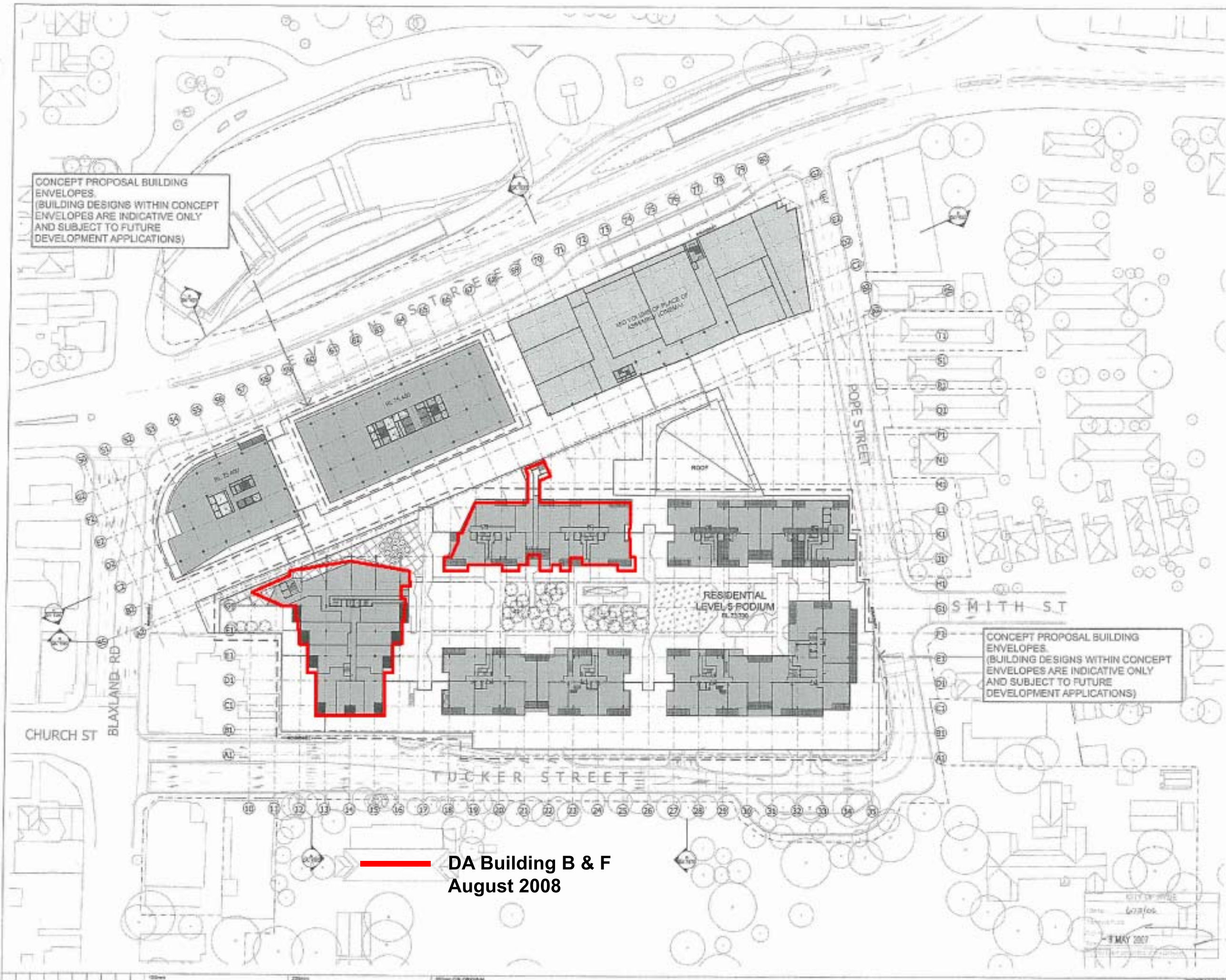
Land Lease design in collaboration with
KIMBLE TAYLOR ARCHITECTS

City of Ryde
100 Victoria Road
Sydney NSW 2000

PROJECT
TOP RYDE SHOPPING CENTRE REDEVELOPMENT

SHEDDING TITLE
LEVEL 5 RESIDENTIAL RL 75.700

DATE: 10/10/07
PROJECT NO: 010
SCALE: 1:400
DRAWING NO: 1050
DATE: 10/10/07
DA: 1050 01



CONCEPT PROPOSAL BUILDING ENVELOPES. (BUILDING DESIGNS WITHIN CONCEPT ENVELOPES ARE INDICATIVE ONLY AND SUBJECT TO FUTURE DEVELOPMENT APPLICATIONS)

CONCEPT PROPOSAL BUILDING ENVELOPES. (BUILDING DESIGNS WITHIN CONCEPT ENVELOPES ARE INDICATIVE ONLY AND SUBJECT TO FUTURE DEVELOPMENT APPLICATIONS)

DA Building B & F
August 2008

KEY PLAN

KEY - PROPOSED USAGE

- SHOP
- REFRESHMENT ROOM
- COMMERCIAL PREMISES
- RECREATION AREA
- COMMUNITY FACILITIES
- PLACE OF ASSEMBLY
- CHILD CARE CENTRE
- PLACE OF PUBLIC WORSHIP
- RESIDENTIAL

THE FOLLOWING USAGES ARE EXCLUDED FROM THE DEFINITION OF N.U.F.A. (NET USABLE FLOOR AREA.)

- HALL / CIRCULATION
- CORE ELEMENTS / VERTICAL TRANSPORT
- FIRE STAIRS / PASSAGES
- SERVICE AREAS / AMENITIES / B.O.H.
- TRAFFIC - ENTRY
- TRAFFIC - EXIT
- BELOW GROUND

Bovis
Land Lease

Project:
Bovis Land Lease Pty Limited
Level 6 & 7 Residential / Commercial

Architect:
Level Lease Design
Level Lease Design in collaboration with
Krisa Taylor Architects

Structural Engineer:
Marsden & Partners International Pty Ltd

City of Ryde
Project No. 522/08
Date: 8 MAY 2007

PROJECT
TOP RYDE SHOPPING CENTRE REDEVELOPMENT

SHOWN HERE
LEVEL 6 & 7 RESIDENTIAL / COMMERCIAL

DRAWN BY: [] IN CHARGE BY: [] CHECKED BY: []

SCALE: 1:500

DRAWING NO. DA: 1060

01

CONCEPT PROPOSAL BUILDING ENVELOPES.
(BUILDING DESIGNS WITHIN CONCEPT ENVELOPES ARE INDICATIVE ONLY AND SUBJECT TO FUTURE DEVELOPMENT APPLICATIONS)

CONCEPT PROPOSAL BUILDING ENVELOPES.
(BUILDING DESIGNS WITHIN CONCEPT ENVELOPES ARE INDICATIVE ONLY AND SUBJECT TO FUTURE DEVELOPMENT APPLICATIONS)

DA Building B & F
August 2008

KEY PLAN

KEY - PROPOSED USAGE

- SHOP
- REFRESHMENT ROOM
- COMMERCIAL PREMISES
- RECREATION AREA
- COMMUNITY FACILITIES
- PLACE OF ASSEMBLY
- CHILD CARE CENTRE
- PLACE OF PUBLIC WORSHIP
- RESIDENTIAL

THE FOLLOWING USAGES ARE EXCLUDED FROM THE DEFINITION OF R.U.F.A. (NET USABLE FLOOR AREA.)

- HALL / CIRCULATION
- CORE ELEMENTS / VERTICAL TRANSPORT
- FIRE STAIRS / PASSAGES
- SERVICE AREAS / AMENITIES / B.O.M.
- TRAFFIC - ENTRY
- TRAFFIC - EXIT
- BELOW GROUND

Project Manager:
Bovis Lend Lease Pty. Limited
177 Collins Street
Melbourne VIC 3000

Lead Designer:
Lend Lease Design
Level 11, 100 Collins Street
Melbourne VIC 3000

Lead Designer in collaboration with:
Kilva Taylor Architects
Level 11, 100 Collins Street
Melbourne VIC 3000

Architect:
Marchion & Partners International Pty Ltd
Level 11, 100 Collins Street
Melbourne VIC 3000

Design Landscape Architects:
Lend Lease Design
Level 11, 100 Collins Street
Melbourne VIC 3000

Review Architect:
Lend Lease Design in collaboration with
Kilva Taylor Architects
Level 11, 100 Collins Street
Melbourne VIC 3000

City of Ryde
6/22/05

8 MAY 2008

PROJECT:
TOP RYDE SHOPPING CENTRE REDEVELOPMENT

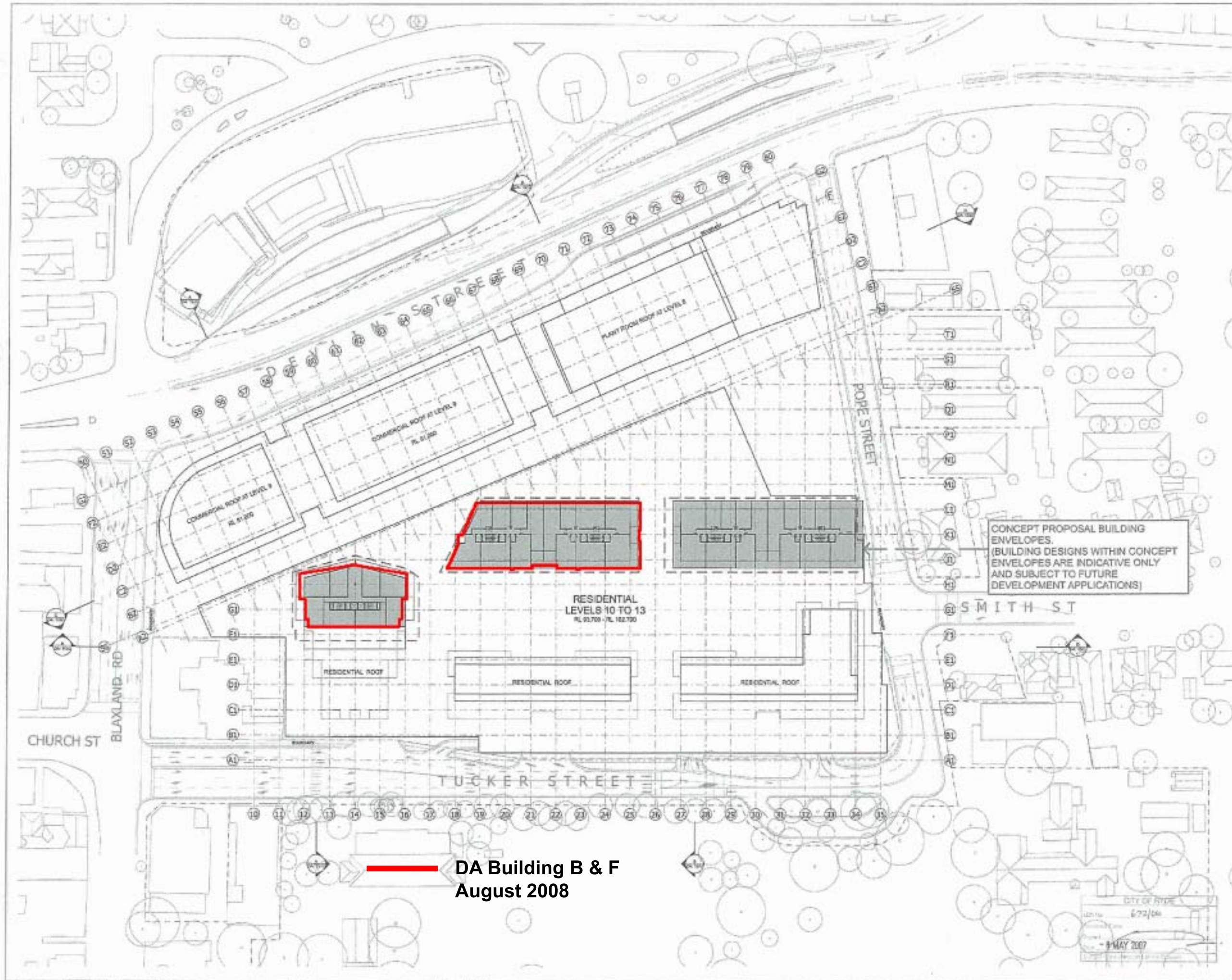
DRAWING TITLE:
LEVEL 8 & 9 RESIDENTIAL / COMMERCIAL

DRAWN BY: SA
PROJECT NO: 618

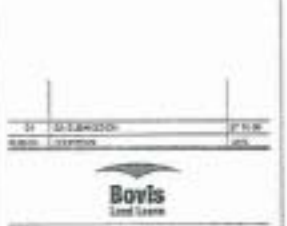
SCALE: 1:500

DRAWING NO: 1080

ISSUE: 01



- KEY - PROPOSED USAGE
- SHOP
 - REFRESHMENT ROOM
 - COMMERCIAL PREMISES
 - RECREATION AREA
 - COMMUNITY FACILITIES
 - PLACE OF ASSEMBLY
 - CHILD CARE CENTRE
 - PLACE OF PUBLIC WORSHIP
 - RESIDENTIAL
- THE FOLLOWING USAGES ARE EXCLUDED FROM THE DEFINITION OF R.U.F.A. (NET USABLE FLOOR AREA.)
- HALL / CIRCULATION
 - CORE ELEMENTS / VERTICAL TRANSPORT
 - FIRE STAIRS / PASSAGES
 - SERVICE AREAS / AMENITIES / B.O.H.
 - TRAFFIC - ENTRY
 - TRAFFIC - EXIT
 - BELOW GROUND



Bovis
Lend Lease

Developed by Bovis Lend Lease Pty. Limited
111 Pitt Street Sydney NSW 2000

Designed by Land Lease design
200 Pitt Street Sydney NSW 2000

Architects: **Woods Bagot** in collaboration with **Woods Bagot**
111 Pitt Street Sydney NSW 2000

Structural Engineers: **Stanton & Partners International Pty Ltd**
111 Pitt Street Sydney NSW 2000

Landscape Architects: **Oculus Landscape Architects**
111 Pitt Street Sydney NSW 2000

Interior Design: **Land Lease design in collaboration with**
Sida & Taylor Architects

City of Ryde
111 Pitt Street Sydney NSW 2000

PROJECT
TOP RYDE SHOPPING CENTRE REDEVELOPMENT

DRAWING TITLE
LEVEL 10 TO 13 RESIDENTIAL

DRAWN BY SA CHECKED BY
PROJECT NO. 210

SCALE 1:500

DATE 1 MAY 2007

DA: 1100 01