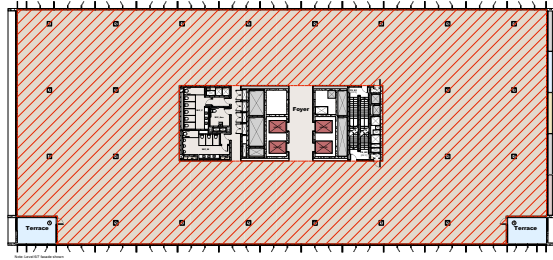
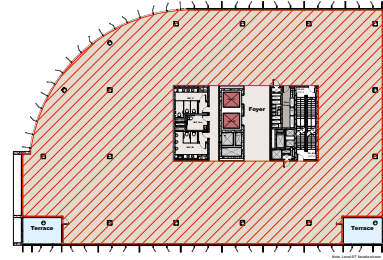


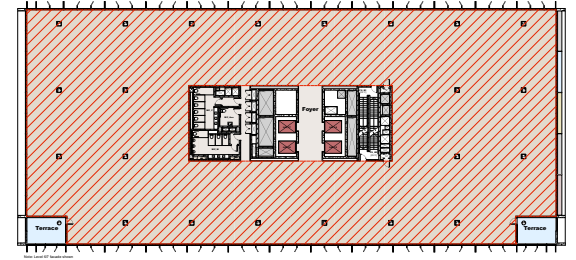
Building A



Building B



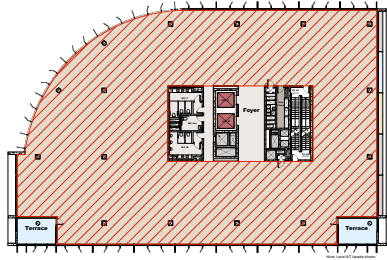
Building A



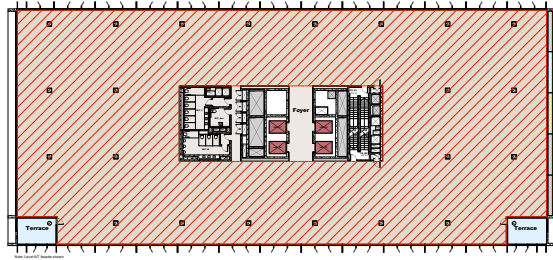
Building B

01 Level 5

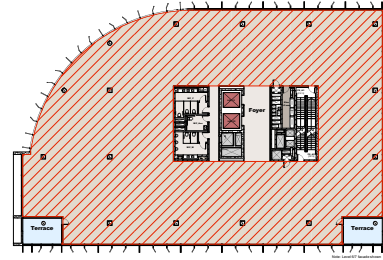
01 Level 6



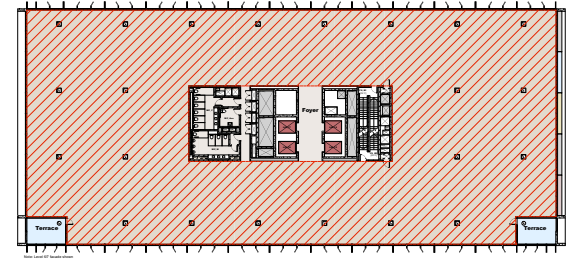
Building A



Building B



Building A



Building B

01 Level 7

01 Level 8

LEGEND:



NUFA

Net Useable Floor Area (NUFA):

- Definition - Floor Space excluding:
  - walls, stairs, lobbies, corridors & other space permanently set aside for circulation
  - lift wells & service ducts
  - toilets & space permanently set aside for common storage
  - plant, machinery & service areas including service corridors & garbage areas
  - terraces, balconies or like space with walls less than 1.5m high

Area Schedule (NUFA):

Level	Building A	Building B	Total
Level 5	1107m <sup>2</sup>	1827m <sup>2</sup>	2934m <sup>2</sup>
Level 6	1107m <sup>2</sup>	1827m <sup>2</sup>	2934m <sup>2</sup>
Level 7	1107m <sup>2</sup>	1827m <sup>2</sup>	2934m <sup>2</sup>
Level 8	1107m <sup>2</sup>	1827m <sup>2</sup>	2934m <sup>2</sup>
<b>Total</b>			<b>11738m<sup>2</sup></b>

No.	Date	Appr	Revision Notes
J	27/09/09	DS	DA Submission
I	24	-	-
H	12/09/09	DS	DA Submission
G	03/09/09	DS	Council Review

