

EXISTING STREET VIEW (VIEW FROM LOCATION 1)  
REFER TO PLAN BELOW FOR LOCATION. PHOTO WAS TAKEN ON 3 AUGUST 2019

EXISTING



PARALLEL PARKING  
ALONG PRINCES ST

NON COMPLIANT  
DRIVEWAYS ALONG  
THE NORTHERN END  
OF PRINCES STREET

EXISTING ROAD  
SURFACE IN POOR  
CONDITION

ADDITIONAL ITEMS  
(NOT SHOWN):

- NEW BUS TURNING  
AREA AT THE  
SOUTHERN END OF  
PRINCES STREET.
- PARALLEL PARKING  
LANE ALONG THE  
NORTHBOUND SIDE  
OF PRINCES STREET  
BETWEEN ARGYLE  
AVENUE AND  
BUFFALO ROAD
- FOOTPATH  
UPGRADES  
INCLUDING PRAM  
RAMPS.

ARTIST'S IMPRESSION SHOWING 60 DEGREE ANGLES PARKING SPACES, KERB  
REALIGNMENT AND MEDIAN ISLAND UPGRADE - VIEW FROM LOCATION 1

PROPOSED



WHEEL  
STOPS TO BE  
PROVIDED

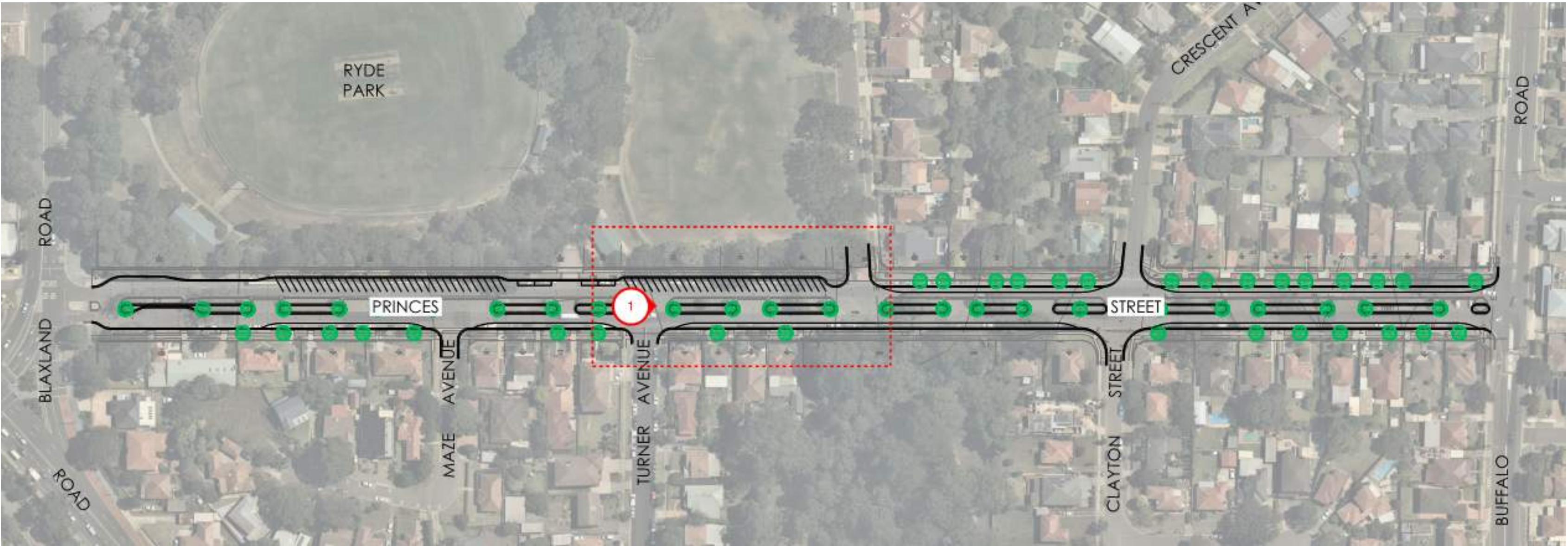
EXISTING KERB  
LINE SHIFTED  
1.2M WIDER  
THAN CURRENT  
POSITION

60 DEGREE  
REVERSE IN  
ANGLED PARKING  
PROVIDING 26  
ADDITIONAL  
SPACES

KERB AND  
CARRIAGEWAY  
ADJUSTED TO REMOVE  
NON-COMPLIANT  
DRIVEWAYS AND STOP  
VEHICLE SCRAPING

3M WIDE  
MEDIAN  
ISLAND  
  
NEW TREES OF NATIVE  
SPECIES TO BE PLANTED  
(SIZE IN 5 YEARS TIME)

SITE PLAN AND LOCATION MAP - PRINCES STREET BETWEEN BUFFALO ROAD AND BLAXLAND ROAD



SITE PLAN AND LOCATION MAP - INSET ENLARGED VIEW

