

Disability Inclusion Action Plan

Questions for you to think about

Easy Read version



How to use this document



City of Ryde wrote this document. When you see the word 'we', it means City of Ryde.



We wrote this information in an easy to read way.

We use pictures to explain some ideas.

Not bold
bold

We have written some words in **bold**.

This means the letters are thicker and darker.

We explain what these words mean.



This Easy Read document is a summary of another document. This means it only includes the most important ideas.



You can find the other document on our website at www.ryde.nsw.gov.au/DIAP



You can ask for help to read this document.

A friend, family member or support person may be able to help you.

Our Disability Inclusion Action Plan



We are updating our Disability Inclusion Action Plan.

This plan talks about what we want to do to make the City of Ryde more:



- **accessible**



- **inclusive.**



When something is accessible, everyone can use it.



When something is inclusive, everyone can take part.



We have a law in New South Wales called the *Disability Inclusion Act 2014* (the Act).



The Act explains the rules that everyone must follow.



The Act makes sure people with disability in New South Wales are treated fairly.



The Act also says we must have a Disability Inclusion Action Plan.

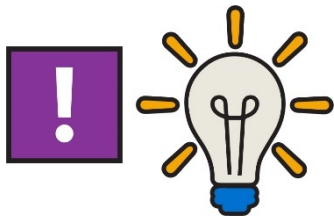


Our plan talks about what we have done over the last 4 years to make City of Ryde more:

- accessible
- inclusive.



Our plan has 4 main **themes**.



Themes are important ideas that come up in different areas of our work and lives.



1. Our **attitudes**

Attitudes are what you:



- think
- feel
- believe.



2. Accessible communities



3. Helping people get good jobs



4. Services and communication



Each of these themes has a list of actions.

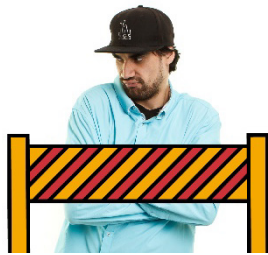
These are the things we will do to reach our goals.

We explain the themes on the following pages.



We want to know what you think about these themes and the changes we want to make.

Barriers people with disability face



We know people with disability face **barriers** when they want to take part in the community.



A barrier is something that stops you from doing something you:

- need to do
- want to do.

Some of these barriers include:



- our attitudes
- moving around the city
- getting a good job
- finding and using our services.

We have ideas about how to:



- take away these barriers



- make life better for people with disability.



We'd like to know what you think about these barriers too.

Our attitudes



We want to change our thinking about people with disability.



This will help more people with disability feel welcome in our community.

We want to talk to more people with disability to work out:



- what barriers they face



- how we can help.



We want to train our staff to:

- make our information accessible
- work with people with disability.



We want to change how we share information about people with disability with the City of Ryde.

1

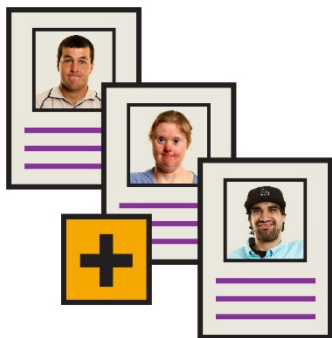


This will help make sure that people with disability only need to tell us their story once when they want to use our services.



We want to make our events more:

- accessible
- inclusive.



We want to have more pictures of people with disability in our documents.



We will celebrate events for people with disability.



We want to work with other organisations to make our community more inclusive.

Moving around the city

We want to work out:



- what barriers people with disability face



- how we can remove them.



We want to make a better way for people with disability to ask us for more accessible:

- ramps
- pathways.



We want to make our playgrounds more accessible.



When we make new public spaces, we want to think about how to make them accessible.

We want to make our signs:



- clear



- easy to understand.



We want to work with the NSW Government to make public transport more accessible.

Getting a good job

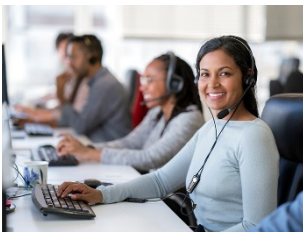


We want to make our **workplace** more accessible.

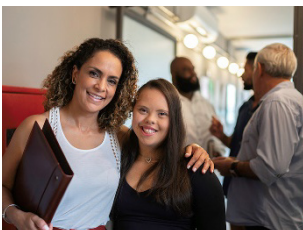
A workplace is any place you might work, such as:



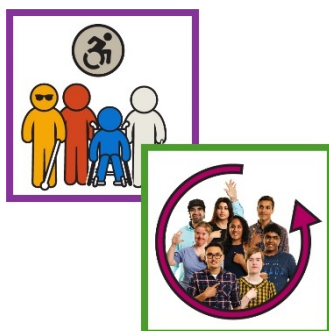
- an office



- a customer service centre.



We want to support our staff if they look after a person with disability.



We want to make how we hire people more:

- accessible
- inclusive.



We want to work with other organisations to hire more people with disability.



We want more people with disability to:

- **volunteer** with us
- learn new things.

When you volunteer, you:



- work but you don't get paid.



- do work that helps other people.



We want to work with other businesses to hire more people with disability.

Finding and using our services



We want to make our plans for the future more:

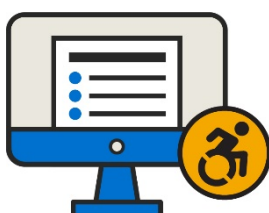
- accessible
- inclusive.



We want to make our websites more accessible.



We want to include people with disability when we make our websites.



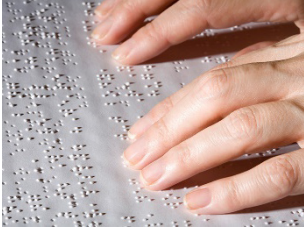
We want to make all our documents accessible.

We want to write train our staff how to write in a way that is:

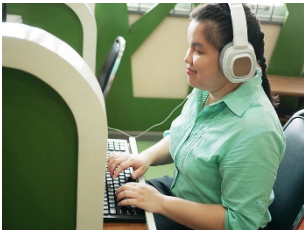


- clear
- easy to understand.

We want to make other versions of our documents, like:



- Braille



- audio.



We want to make it easy for people with disability to tell us what they think.



We want to include people with disability when we make decisions that affect them.

Questions for you to think about

We want to know what you think about:



- what we need to do



- our ideas.

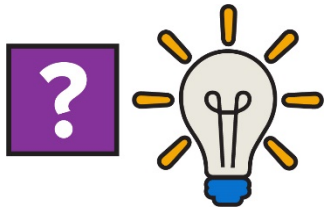
You can answer:



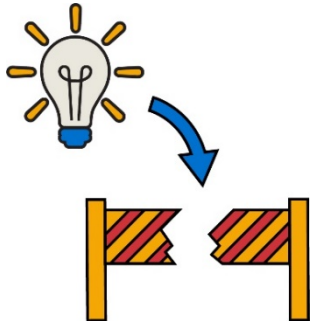
- all of the questions



- some of the questions.



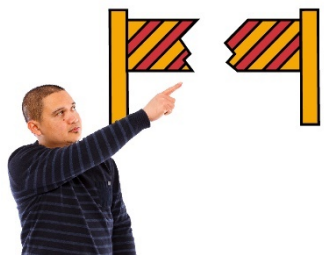
What do you think about our ideas?



Do you think our ideas will help take away barriers for people with disability?

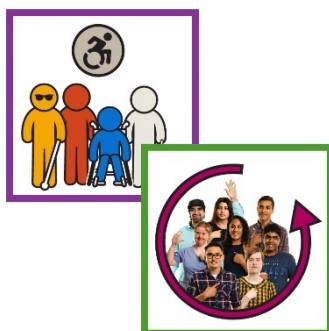


What other barriers should we look at?



How can we help take these barriers away?

What are the most important things we should do to make City of Ryde more:



- accessible?
- inclusive?



Do you think we have talked about everything we can do to make City of Ryde more:

- accessible?
- inclusive?



Is there anything we have left out?

How to tell us what you think



You can tell us what you think on our website.



www.ryde.nsw.gov.au/DIAP



We will think about what you have told us when we write our new plan.

Contact us



9952 8222



cityofryde@ryde.nsw.gov.au



City of Ryde
Locked Bag 2069
North Ryde
NSW 1670



www.ryde.nsw.gov.au/DIAP



The Information Access Group created this Easy Read document using stock photography and custom images. The images may not be reused without permission. For any enquiries about the images, please visit **www.informationaccessgroup.com**. Quote job number 4053-A.