

Hunters Hill Lane Cove Parramatta Ryde Bush Fire Management Committee

Bush Fire Risk Management Plan 2019-2024



Table of Contents

<i>Glossary</i>	6
<i>Chapter 1. Introduction</i>	7
1.1 Background	7
1.2 Aim and Objectives	7
1.3 Description of the Hunters Hill Lane Cove Parramatta Ryde BFMC Area	8
1.3.1 Location and land tenure	8
1.3.2 Climate and bush fire season	8
1.3.3 Population and demographic information	8
1.3.4 History of bush fire frequency and ignition cause	8
<i>Chapter 2. Identifying and Assessing the Bush Fire Risk</i>	9
2.1 Process	9
2.2 Communication and Consultation	9
2.3 Identifying the Bush Fire Risk	10
2.3.1 Assets	10
2.3.2 Assessing the Bush Fire Risk - Consequence	11
2.3.3 Assessing the Bush Fire Risk - Likelihood	12
2.3.4 Identifying the level of risk	12
2.3.5 Evaluating the Bush Fire Risk	12
2.3.6 Prioritising Treatments	12
2.3.7 Risk Acceptability	13
<i>Chapter 3. Treating the Risk</i>	14
3.1 Bush Fire Management Zones	14
3.2 BFMC Wide Treatments	15
3.3 Asset Specific Treatments	16
3.4 Fire Thresholds	17
3.5 Annual Works Programs	19
3.6 Implementation	19
<i>Chapter 4. Performance Monitoring and Reviewing</i>	20
4.1 Review	20
4.2 Monitoring	20
4.3 Reporting	20
4.4 Performance Measurements	20
<i>Appendix 1 Community Participation Strategy</i>	22
<i>Appendix 2 Asset Register</i>	24
<i>Appendix 3 Treatment Register</i>	30
<i>Appendix 4 Map Display Areas</i>	44

List of Tables

<i>Table 1-1 Land Tenure</i>	8
<i>Table 2-1 Risk acceptability and mitigation</i>	13
<i>Table 3-1 Bush Fire Management Zones</i>	14
<i>Table 3-2 Asset specific treatments used in the Hunters Hill Lane Cove Parramatta Ryde BFMC area</i>	17
<i>Table 3-3 Fire Thresholds for Vegetation Categories</i>	18

List of Figures

<i>Figure 2-1 Overview of the risk assessment process</i>	9
---	---

Hunters Hill Lane Cove Parramatta Ryde Bush Fire Management Committee Member Agencies

Fire & Rescue NSW
Hunters Hill Shire Council
Ryde City Council
NSW Police
Department of Trade and Investment – Crown Lands
M2 Motorway

Office of Environment and Heritage - NPWS
Lane Cove Council
Parramatta City Council
Ausgrid
Nature Conservation Council – NSW
SOPA

Authorisation

In accordance with Part 3 Division 4 of the Rural Fires Act 1997, this Draft Plan has been prepared by the Hunters Hill Lane Cove Parramatta Ryde Bush Fire Management Committee and has been endorsed at the BFMC meeting on 25th February 2016 for submission to the Bush Fire Coordinating Committee.

Recommended

Cr. Pam Palmer
Chairperson
Hunters Hill Lane Cove Parramatta Ryde Bush Fire Management
Committee

Approved

On behalf of the
NSW Bush Fire Coordinating Committee

Amendment List

Amendment		Entered	
Number	Date	Signature	Date

Glossary

Assets: anything valued by the community which includes houses, crops, heritage buildings and places, infrastructure, the environment, businesses, and forests, that may be at risk from bush fire.

Bush Fire: a general term used to describe fire in vegetation, includes grass fire.

Bush Fire Hazard: the potential severity of a bush fire, which is determined by fuel load, fuel arrangement and topography under a given climatic condition.

Bush Fire Risk: the chance of a bush fire igniting, spreading and causing damage to the community or the assets they value.

Bush Fire Risk Management: a systematic process that provides a range of treatments which contribute to the wellbeing of communities and the environment, which suffer the adverse effects of wildfire/bush fire.

Bush Fire Threat: potential bush fire exposure of an asset due to the proximity and type of a hazard and the slope on which the hazard is situated.

Consequence: outcome or impact of a bush fire event.

Fire Fighting Authorities: the NSW Rural Fire Service, NSW Fire Brigades, the National Parks and Wildlife Service and Forests NSW.

Likelihood: the chance of a bush fire igniting and spreading.

Major Bush Fire: A bush fire which requires the attendance of multiple brigades or causes damage to property or injury to one or more persons.

Display area: geographic area determined by the Bush Fire Management Committee which is used to provide a suitable area and scale for community participation and mapping display purposes.

Recovery costs: the capacity of an asset to recover from the impacts of a bush fire.

Risk Acceptance: an informed decision to accept the consequences and the likelihood of a particular risk.

Risk Analysis: a systematic process to understand the nature of and to deduce the level of risk.

Risk Assessment: the overall process of risk identification, risk analysis and risk evaluation.

Risk Identification: the process of determining what, where, when, why, and how something could happen.

Risk Treatment: the process of selection and implementation of measures to modify risk.

Vulnerability: the susceptibility of an asset to the impacts of bush fire.

Chapter 1. Introduction

1.1 Background

Under the *Rural Fires Act 1997* the Bush Fire Coordinating Committee (BFCC) must constitute a Bush Fire Management Committee (BFMC) for each area in the State, which is subject to the risk of bush fires. Each BFMC is required to prepare and submit to the BFCC a draft Bush Fire Risk Management Plan (BFRMP).

A BFRMP is a strategic document that identifies community assets at risk and sets out a five-year program of coordinated multi-agency treatments to reduce the risk of bush fire to the assets. Treatments may include such things as hazard reduction burning, grazing, community education, fire trail maintenance and establishing community fireguard groups.

Annual programs to implement the treatments identified in this plan will be undertaken by the relevant land managers and fire fighting authorities.

In exercising its functions under the *Rural Fires Act 1997*, including the preparation of a draft bush fire risk management plan, the Hunters Hill Lane Cove Parramatta Ryde BFMC is required to have regard to the principles of ecologically sustainable development (ESD).

This document and the accompanying maps together form the BFRMP for the Hunters Hill Lane Cove Parramatta Ryde BFMC area.

This BFRMP has been prepared by the Hunters Hill Lane Cove Parramatta Ryde BFMC and covers both public and private lands. This BFRMP must be reviewed and updated within each successive five-year period from the constitution of the BFMC.

The BFCC recognises that climate change has the potential to increase bush fire risk. The risk assessment process applied in this BFRMP is based on current climatic conditions. The BFCC will monitor information on climate change and will modify the process when necessary.

1.2 Aim and Objectives

The **aim** of this BFRMP is to minimise the risk of adverse impact of bush fires on life, property and the environment.

The **objectives** of this BFRMP are to:

- reduce the number of human-induced bush fire ignitions that cause damage to life, property and the environment;
- manage fuel to reduce the rate of spread and intensity of bush fires, while minimising environmental/ecological impacts;
- reduce the community's vulnerability to bush fires by improving its preparedness; and
- effectively contain fires with a potential to cause damage to life, property and the environment.

1.3 Description of the Hunters Hill Lane Cove Parramatta Ryde BFMC Area

1.3.1 Location and land tenure

The Hunters Hill Lane Cove Parramatta Ryde *BFMC* area occupies the North Western shore of Sydney Harbour and extends along the northern side of the Parramatta River up to the M2 Motorway.

The area covered by the Hunters Hill Lane Cove Parramatta Ryde BFMC is 14,036 hectares and includes the land tenures outlined in Table 1.

Table 1-1 Land Tenure

Land Manager*	% of BFMC area
National Parks & Wildlife Service (OEH)	1%
Forests NSW	N/A
Trade and Investment – Crown Lands	5%
Local Government	14%
Private	80%
Other**	N/A

1.3.2 Climate and bush fire season

The typical / average climate in the Hunters Hill Lane Cove Parramatta Ryde BFMC area is for uniform rainfall throughout the year, although higher rainfall can be experienced in the months of February to March. The Bush Fire season generally runs from October to March, in which high daytime temperatures are expected.

Prevailing weather conditions associated with the Bush Fire season in the Hunters Hill Lane Cove Parramatta Ryde BFMC area are strong North West winds, low humidity and high temperatures. These conditions combined with predominantly dry sclerophyll vegetation dramatically influence the behaviour of Bush Fires in the area. Although Bush Fires may occur at any time of the year, the highest probability of Bush Fires occurs in December and January.

1.3.3 Population and demographic information

The population of the Hunters Hill Lane Cove Parramatta Ryde BFMC area is approximately 387,958 people. The major population centres are Hunters Hill, Parramatta, Harris Park Ryde, Epping, Carlingford and Lane Cove.

1.3.4 History of bush fire frequency and ignition cause

The Hunters Hill Lane Cove Parramatta Ryde BFMC area has on average 8 Bush Fires per year, of which none can be considered a major fire.

The main sources of ignition in the Hunters Hill Lane Cove Parramatta Ryde BFMC areas are deliberate ignitions, campfires, fire by misadventure & lightning strikes.

Chapter 2. Identifying and Assessing the Bush Fire Risk

2.1 Process

The Australia/New Zealand Standard ISO 31000:2009 Risk Management - Principles and guidelines was used as the basis for the risk assessment process. See Figure 2.1 for the steps involved. For a detailed description of the process undertaken see the Bush Fire Risk Management Planning Guidelines for Bush Fire Management Committees on the RFS website: www.rfs.nsw.gov.au.

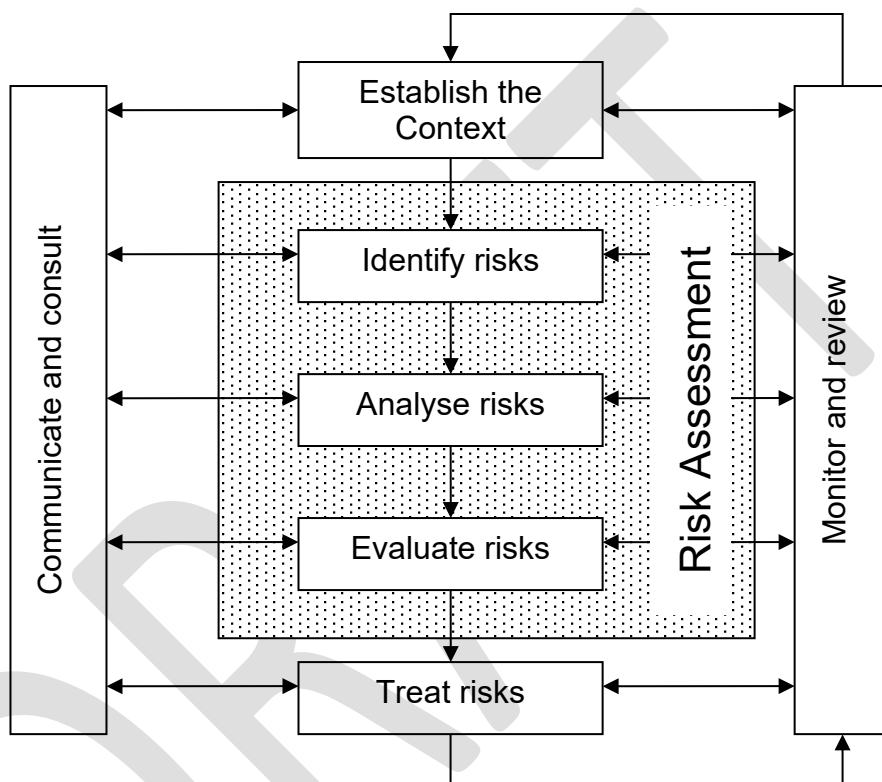


Figure 2-1 Overview of the risk assessment process

2.2 Communication and Consultation

Community participation is an integral part of risk management. The Community Participation Strategy involved developing and implementing a process to address the needs, issues and concerns of stakeholders within the BFMC area in regard to the BFRMP.

See Appendix 1 for the Community Participation Strategy used by the Hunters Hill Lane Cove Parramatta Ryde BFMC in preparing this BFRMP.

2.3 Identifying the Bush Fire Risk

Identifying the level of bush fire risk firstly involved identifying important community assets considered to be at risk from bush fire in the Hunters Hill Lane Cove Parramatta Ryde BFMC area, and then assessing the likelihood and consequence ratings.

2.3.1 Assets

BFMC members and the community, identified assets within the Hunters Hill Lane Cove Parramatta Ryde BFMC that they believed were at risk of bush fire.

The assets were divided into four asset types:

Human settlement

- Residential areas including urban bushland interface areas and rural properties;
- Special Fire Protection areas including schools, hospitals, nursing homes, and tourist facilities; and
- Other human settlement areas including commercial and industrial areas where distinct from major towns.
- Neighbourhood Safer Place (NSP) is defined by the *Rural Fires Act 1997* as *land or a building designated as a neighbourhood safer place under section 62C*. NSPs provide a place of last resort for people during a bush fire. All designated NSP locations for NSW are available at www.rfs.nsw.gov.au.

Economic

- Agricultural; e.g. major silos, regional saleyards, cropping/grazing land;
- Commercial/industrial e.g. major industries, waste treatment plants, sawmills;
- Infrastructure e.g. large power lines, gas and oil pipelines, railway lines, electricity substations, communication facilities;
- Tourist and recreational e.g. tourist sites and facilities, resorts, retreats;
- Mines;
- Commercial forests e.g. pine plantations, eucalypt plantations and commercial native forests; and
- Drinking water catchments.
- Military facilities

Environmental

- Threatened species, populations and ecological communities and Ramsar wetlands;
- Locally important species and ecological communities, such as species and ecological communities especially sensitive to fire.

Cultural

- Aboriginal significance – Aboriginal places and items of significance;
- Non-indigenous heritage – places and items arising from the early occupation of NSW by European or other non-indigenous settlers; and
- Other cultural assets – community halls, clubs and recreational facilities.

See Appendix 2 for the full list of assets identified in the Hunters Hill Lane Cove Parramatta Ryde BFRMP area. See maps 1-3 for the location of assets to be treated under this BFRMP

2.3.2 Assessing the Bush Fire Risk - Consequence

Once the assets were identified, the consequence of a bush fire impacting on these assets was assessed.

See Appendix 2 for the consequence ratings assigned to each asset identified in the Hunters Hill Lane Cove Parramatta Ryde BFRMP area.

The different asset types had different assessment processes used to determine the consequence. These processes are identified below.

Human settlement

A potential fire behaviour model using vegetation type, slope and separation distance was used to produce a threat rating for human settlement assets. The vulnerability of the asset to a bush fire was also assessed and a rating assigned. These ratings were then used to assess the consequence of a bush fire impacting upon a human settlement asset.

Special Fire Protection (SFP) assets were considered inherently more vulnerable to bush fire due to mobility capacity, knowledge or other issues relating to their inhabitants, (e.g. the elderly, infirm, children or tourists) and therefore stricter requirements for vulnerability assessment and rating were applied. Due to circumstances surrounding NSPs and their use during a bush fire, stricter requirements for vulnerability assessment and rating will also apply to these assets.

Economic

The level of economic impact e.g. local, regional or state, as well as the economic recovery costs (how long and complicated a financial recovery will be) of the asset were identified. These ratings were used to assess the consequence of a bush fire impacting upon an economic asset.

Environmental

Environmental assets with known minimum fire threshold were assessed to determine if they were at risk of a bush fire within the 5 year life of the BFRMP using fire history *and fire threshold* data. Those environmental assets which were within or above the fire threshold were not assessed in the BFRMP, as the negative impact of a fire within the 5 year period was determined as being low and may even be of benefit to the asset and surrounding habitat.

The vulnerability of an environmental asset was determined by its conservation status and its geographic extent (distribution across the landscape). Vulnerability and potential impact of bush fire were used to assess the consequence of a bush fire impacting upon an environmental asset.

Cultural

For non-indigenous historical, Aboriginal and other cultural assets a potential fire behaviour model using fuel load, slope and proximity was used to produce a threat rating. The physical vulnerability of the asset to a bush fire was also assessed. These ratings were then used to assess the consequence of a bush fire impacting upon a cultural asset.

2.3.3 Assessing the Bush Fire Risk - Likelihood

For all asset types the likelihood of a bush fire occurring was assessed. This involves considering fire history, including ignition cause and patterns, known fire paths, access, containment potential and potential fire run (size of the vegetated area). See Appendix 2 for the likelihood ratings assigned to each asset identified in the Hunters Hill Lane Cove Parramatta Ryde BFMC area.

2.3.4 Identifying the level of risk

The consequence and likelihood ratings were then used to identify the level of risk. See Appendix 2 for the risk ratings assigned to each asset identified in the Hunters Hill Lane Cove Parramatta Ryde BFMC area.

2.3.5 Evaluating the Bush Fire Risk

Once the risk ratings for each asset were identified, they were evaluated to:

- a) confirm that risk levels identified in the risk analysis process are appropriate and reflect the relative seriousness of the bush fire risk;
- b) identify which assets require treatments; and
- c) identify treatment priorities.

2.3.6 Prioritising Treatments

No organisation has limitless resources to deal with adverse risk. It is therefore necessary to define priorities. The bush fire risk ratings determined were used to prioritise the risk treatments, i.e. areas of extreme risk were considered first for treatment, then very high, then high then medium then low.

Treatments used within this five year Bush Fire Risk Management Plan can be applied annually, periodically throughout the life of the Plan, as deemed necessary due to changing risk or as a single targeted event.

2.3.7 Risk Acceptability

Risks below a certain level were assessed as not requiring treatment within the life of this plan Table 2-1. This is due to a combination of public education; general mitigation works and Fire agencies response times and resources availability. Within the Hunters Hill Lane Cove Parramatta Ryde BFMC area the level of acceptability is 'Medium'. Areas of medium and low risk are likely to be managed by routine procedures and so do not require a specific application of resources.

Table 2-1 Risk acceptability and mitigation

Risk Rating	Mitigation
Extreme	Application of specific and coordinated treatment strategies as defined within this Bush Fire Risk Management Plan
Very High	
High	
Medium	Land owners / manages may apply the identified treatment strategy as part of their routine annual works, maintenance and inspection programs
Low	

All NSPs for a BFMC area will require ongoing treatment by the applicable landowner to ensure that the asset remains viable as a place of last resort for people during a bush fire. Therefore, all NSP assets are allocated specific treatments in this Plan, regardless of the level of bush fire risk identified and the risk acceptability nominated by the Hunters Hill Lane Cove Parramatta Ryde BFMC.

Chapter 3. Treating the Risk

3.1 Bush Fire Management Zones

Bush Fire Management Zones were identified within the Hunters Hill Lane Cove Parramatta Ryde BFMC area and mapped (see maps 1-3). These zones identify the fire management intent for a specific area. See Table 3.1 for descriptions of the zones and their purposes. The four categories of Bush Fire Management Zones are:

- Asset Protection Zone (APZ);
- Strategic Fire Advantage Zone (SFAZ);
- Land Management Zone (LMZ); and
- Fire Exclusion Zone (FEZ).

Some of these zones (usually Land Management Zones) may be further classified within this category by the land manager, e.g. LMZ -Heritage Management Zone (NPWS).

LMZs that have been identified as a polygon on the map will have defined management objectives. Below is a list of each identified LMZ and its associated management objectives.

Table 3-1 Bush Fire Management Zones

Zone	Purpose	Suppression Objective(s)	Zone characteristics
Asset Protection Zone	To protect human life, property and highly valued public assets and values.	To enable the safe use of Direct Attack suppression strategies within the zone. To minimise Bush Fire impacts on undefended assets.	As per RFS document <i>Standards for Asset Protection Zones</i> .
Strategic Fire Advantage Zone	To provide strategic areas of fire protection advantage which will reduce the speed and intensity of Bush Fires, and reduce the potential for spot fire development; To aid containment of wildfires to existing management boundaries.	To improve the likelihood and safe use of: Parallel Attack suppression strategies within the zone. and/or Indirect Attack (back burning) in high to very high fire weather conditions within the zone. To reduce the likelihood of: Crown fire development within the zone. and/or Spot fire ignition potential from the zone	Zone width related to suppression objectives and dependent upon: <ul style="list-style-type: none"> • Topography • Aspect • Spotting propensity • Location of adjacent firebreaks • Mosaic pattern of treatment Assess Overall Fuel Hazard (OFH) once vegetation communities reach minimum fire thresholds within this plan. Management practices should aim to achieve mosaic fuel reduction patterns so that the majority of the SFAZ has an OFH of less than high.
Land Management Zone	To meet relevant land management objectives in areas where APZs or SFAZs are not appropriate.	As per the land management and fire protection objectives of the responsible land management agency. To reduce the likelihood of spread of fires. To undertake mosaic burning	As appropriate to achieve land management e.g. heritage and/or fire protection e.g. broad scale mosaic burning objectives.
Fire Exclusion Zone	To exclude Bush Fires.	N/A	Variable dependant on size of fire sensitive area requiring protection.

NB: OFH refers the Overall Fuel Hazard Guide as described in the document published by (Dept. of Sustainability and Environment 3rd ed. 1999); State-wide procedures for assessment of fuel hazard will be developed in conjunction with the BFCC.

Note: All areas that are not mapped or described as APZs or SFAZs are considered as LMZs.

3.2 BFMC Wide Treatments

BFMC wide treatments are activities which reduce the overall bush fire risk within the BFMC area and are undertaken on an ongoing basis as part of normal business. These treatments are not linked to specific assets in the BFRMP, rather they are applied across all or part of the BFMC area as designated by legislation or agency policy. BFMC wide treatments include the following:

- **Reviewing the bush fire prone land map**

These maps identify bush fire prone land and are used to trigger whether a development application is assessed using *Planning for Bush Fire Protection*¹.

- **Ensuring developments in bush fire prone land comply with *Planning for Bush Fire Protection***

This assessment process requires new applications for development to include bush fire protection measures.

- **Using the Local Environment Plan/s (LEPs) to control developments in areas with a bush fire risk**

LEPs can be used to exclude development in extreme bush fire risk areas or where bush fire protection measures cannot be incorporated.

- **Varying the standard bush fire danger period as required**

In years where the weather is particularly adverse the bush fire danger period may be brought in early or extended. This is assessed every year by the BFMC.

- **Requiring permits during the bush fire danger period**

In the bush fire danger period, a fire safety permit is required to light a fire in the open. Permits specify conditions such as firefighting equipment that must be on site, or restrict burns based on weather conditions.

- **Prosecution of arsonists/offenders**

Under the *Rural Fires Act 1997* persons may be prosecuted for breaching the conditions on a fire permit, lighting a fire during a Total Fire Ban, allowing fire to escape their property, or other breaches of the Act.

¹ NSW Rural Fire Service 2006 *Planning for Bush Fire Protection: A guide for councils, planners, fire authorities and developers*.

- **Investigation of bush fire cause**

All bush fires which do not have a known cause are investigated to identify how they started.

- **Normal fire suppression activities**

Responding to bush fire is a normal business activity for the fire fighting authorities.

- **Assessing and managing compliance with strategic fire fighting resource allocation provisions**

Strategic fire fighting resource allocation provisions is the process used to identify the number of stations, brigades and appliances required in an area, and considers members, training, assets and hazards.

- **Preparation of a S52 Operations Coordination Plan**

The Operations Coordination Plan is prepared biannually and sets out how coordinated fire fighting will occur. It includes specific operational restrictions on fire fighting techniques in certain areas, where fires will be managed from, and how agencies involved can communicate during operations.

- **Fire Management Plans or Plans of Management**

Some land management agencies have developed fire management plans or plans of management with specific fire or fuel management strategies, for example a Forests NSW Regional Fuel Management Risk Plan, a NPWS Fire Management Strategy. These publicly exhibited plans form the basis for operational fire planning on public parks, reserves and forests.

- **Bush Fire Hazard Complaints**

If someone is concerned about possible bush fire hazards on a neighbouring property or any other land, then this can be reported to the RFS Commissioner or their local RFS Fire Control Centre. The complaint will be investigated and may result in a notice being issued to the landowner or manager to reduce the hazard.

3.3 Asset Specific Treatments

There are five broad strategy groups available to treat the bush fire risk to assets identified in the BFRMP.

The types of asset specific treatments in each strategy group used in the Hunters Hill Lane Cove Parramatta Ryde BFMC areas are listed below. A full list of the treatment strategies in the Hunters Hill Lane Cove Parramatta Ryde BFMC area are in Appendix 3.

Table 3-2 Asset specific treatments used in the Hunters Hill Lane Cove Parramatta Ryde BFMC area

Strategy	Targeted treatments used in the Hunters Hill Lane Cove Parramatta Ryde BFMC area
Ignition Management	Suspend fire generated activities on days of very high to extreme fire danger. Undertake patrols of National Parks during TOBANS. Close National Parks and managed bushland reserves as required.
Hazard Reduction	Manage fuel loads; bushland structure and accessibility Perform annual maintenance along APZ and maintain annual Hazard Reduction Works Program Manage land as per agency Fire Management Plans
Community Education	Manage CFU as per FRNSW policy Community information, (Letterbox drops)
Preparedness	Inspect and maintain fire trail as required Manage CFU as per FRNSW policy Review Pre-incident plans Undertake site inspections as required

3.4 Fire Thresholds

The vegetation in the Hunters Hill Lane Cove Parramatta Ryde BFMC area was classified into fire threshold categories (Table 3.3).

Table 3-3 Fire Thresholds for Vegetation Categories

Vegetation formation	Minimum SFAZ Threshold	Minimum LMZ Threshold	Maximum Threshold	Notes
Rainforest	NA	NA	NA	Fire should be avoided.
Alpine complex	NA	NA	NA	Fire should be avoided.
Wet Sclerophyll forest (shrubby sub formation)	25	30	60	Crown fires should be avoided in the lower end of the interval range.
Wet Sclerophyll forest (grassy sub formation)	10	15	50	Crown fires should be avoided in the lower end of the interval range.
Grassy woodland	5	8	40	Minimum interval of 10 years should apply in the southern Tablelands area. Occasional intervals greater than 15 years may be desirable.
Grassland	2	3	10	Occasional intervals greater than 7 years should be included in coastal areas. There was insufficient data to give a maximum interval; available evidence indicates maximum intervals should be approximately 10 years.
Dry sclerophyll forest (shrub/grass sub formation)	5	8	50	Occasional intervals greater than 25 years may be desirable.
Dry sclerophyll forest (shrub sub formation)	7	10	30	Occasional intervals greater than 25 years may be desirable.
Heathlands	7	10	30	Occasional intervals greater than 20 years may be desirable.
Freshwater wetlands	6	10	35	Occasional intervals greater than 30 years may be desirable.
Forested wetlands	7	10	35	Some intervals greater than 20 years may be desirable.
Saline wetlands	NA	NA	NA	Fire should be avoided.
Semi-arid woodlands (grassy sub formation)	6	9	No max	Not enough data for a maximum fire interval.
Semi-arid woodlands (shrubby sub formation)	10	15	No Max	Not enough data for a maximum fire interval.
Arid shrublands (chenopod sub formation)	NA	NA	NA	Fire should be avoided.
Arid shrublands (acacia sub formation)	10	15	No Max	Not enough data for a maximum fire interval.

3.5 Annual Works Programs

The land management agencies and fire fighting authorities responsible for implementing the treatments identified in this plan will include those treatments in their annual works programs detailing how, when, and where the required activities will be undertaken.

The Hunters Hill Lane Cove Parramatta Ryde BFMC has four annual works programs, these are;

1. Prescribed Burning (Broad area & Piles)
2. Mechanical and Manual works
3. Community Engagement / Education
4. Fire Access Fire Trails (FAFT) – Annual inspections and maintenance as required.

3.6 Implementation

When the treatments identified in this BFRMP are implemented there are a number of issues that need to be considered by the responsible agency including environmental assessments and approvals, smoke management and prescribed burn plans.

Chapter 4. Performance Monitoring and Reviewing

4.1 Review

This BFRMP must be reviewed and updated within each successive five-year period from the constitution of the BFMC. The Hunters Hill Lane Cove Parramatta Ryde BFMC will also review this plan as necessary to account for any changes in context or risk. This may be triggered by a range of circumstances, including but not limited to:

- changes to the BFMC area, organisational responsibilities or legislation;
- changes to the bush fire risk in the area; or
- following a major fire event.

4.2 Monitoring

The BFMC is required to monitor progress towards the completion of treatment works listed in the BFRMP, and the timeliness of the works.

4.3 Reporting

The BFMC is required to report annually to the BFCC on its progress in implementing the bush fire risk management activities identified in this plan.

4.4 Performance Measurements

State wide performance measurements which are linked to the BFRMP have been identified by the BFCC. All BFMCs must use these to monitor and report on their success in reducing the bush fire risk in their BFMC area.

Appendices

Appendix 1 Community Participation Strategy

Appendix 2 Asset Register

Appendix 3 Treatment Register

Appendix 4 Maps Display Area

Map 1	Hunters Hill
Map 2	Lane Cove
Map 3	Parramatta
Map 4	Ryde

Appendix 1 Community Participation Strategy

Target Audience	Method of Communication	Method of Notification	Key messages/ purpose	Resources	Notes & Responsibility
Bushland-interface residents	Local Newspaper print advertisement. Document link on Land Managers websites	Media Release, Mayoral Column, Letters to LGA Precincts, website, Flyer, Poster	Introduce BFRMP, community issues, discuss treatment options & community responsibilities	Media article, Flyers/posters, website, agency representatives, host webpage link, feedback email address	<ul style="list-style-type: none"> FRNSW to draft print advertisement. Land Managers to place advertisement, and maintain host link on website FRNSW to collate feedback
Broader Community	Local Newspaper print advertisement. Document link on Land Managers websites	Media Release, Mayoral Column, Letters to LGA Precincts, website, Flyer, Poster	Introduce BFRMP, community issues, discuss treatment options, community responsibilities	Media article, Flyers/posters, website, agency representatives, host webpage link, feedback email address	<ul style="list-style-type: none"> FRNSW to draft print advertisement. Land Managers to place advertisement, and maintain host link on website FRNSW to collate feedback
Mayor, Councillor & CEO Briefing	Advising letter and explanation of the Bush Fire Risk Plan Send hard copy of Draft Plan	Advising Letter to CEO / General Manager	Introduce BFRMP, Implications for agency	Letter, host webpage link, feedback email address	<ul style="list-style-type: none"> FRNSW to draft & send letter / copy of BFRMP to identify focus group Land Managers to maintain host link on website. FRNSW to collate feedback

Target Audience	Method of Communication	Method of Notification	Key messages/ purpose	Resources	Notes & Responsibility
Staff Briefing	Agency email and webpage link	Email	Introduce BFRMP, Implications for agency	Email, host webpage link, feedback email address	<ul style="list-style-type: none"> Land Managers to maintain host link on website. Land Managers to send email.
Interest Groups (Bushcare etc)	Local Newspaper print advertisement. Document link on Land Managers websites	Media Release, Mayoral Column, Letters to LGA Precincts, website, Flyer, Poster	Introduce BFRMP, community issues, discuss treatment options, community responsibilities	Media article, Flyers/posters, website, agency representatives, host webpage link, feedback email address	<ul style="list-style-type: none"> FRNSW to draft print advertisement. Land Managers to place advertisement, and maintain host link on website FRNSW to collate feedback
CFU	FRNSW email CFU members	FRNSW CFU Officer, to email CFU members and advise of BFRMP	Introduce BFRMP, community issues; discuss treatment options, community responsibilities, and CFU involvement and policies.	Letter, host webpage link, feedback email address	<ul style="list-style-type: none"> Land Managers to maintain host link on website. FRNSW BFO to send email to CFU Officer.
Draft Exhibition	Static display material	Newspaper advertisements	Final public exhibition requirement	Static display materials and copies of Draft BFRMP	<ul style="list-style-type: none"> Land Managers to host display Land Managers to place advertisement, and maintain host link on website FRNSW to collate feedback via email

Appendix 2 Asset Register

Non Mapped Assets

Asset ID	Priority	Asset name	Risk	Likelihood	Consequence	Asset type	Asset sub type	Display area
0	1B	Aboriginal Sites - LCNP	Extreme	Likely	Catastrophic	Cultural	Aboriginal Significance	LANE COVE RYDE
0	1B	Aboriginal Heritage Sites - Lane Cove	Extreme	Likely	Catastrophic	Cultural	Aboriginal Significance	LANE COVE RYDE
0	2A	Telstra Telecommunication Tower - Lane Cove West	Very High	Likely	Major	Economic	Infrastructure	LANE COVE
0	2A	Aboriginal Heritage Significance - Ryde	Very High	Likely	Major	Cultural	Aboriginal Significance	RYDE
0	2A	Porters Creek Bridge	Very High	Likely	Major	Cultural	Non Indigenous	RYDE
0	2A	LCNP stonework	Very High	Likely	Major	Cultural	Non Indigenous	RYDE
0	2A	Aboriginal Heritage Sites - Hunters Hill	Very High	Likely	Major	Cultural	Aboriginal Significance	HUNTERS HILL
0	3A	Flora	High	Likely	Moderate	Environment	Vulnerable	ALL
0	3A	Fauna	High	Likely	Moderate	Environment	Vulnerable	ALL
0	3A	Fidden's Wharf	High	Likely	Moderate	Cultural	Non Indigenous	LANE COVE
0	4	Locally Rare Plants	Medium	Likely	Minor	Environment	Other	LANE COVE
0	NA	LCNP Boatshed	Low	Unlikely	Moderate	Cultural	Non Indigenous	RYDE

Mapped Assets

Asset ID	Priority	Asset name	Risk	Likelihood	Consequence	Asset type	Asset sub type	Display area
1	1A	The Kings School & Tara Anglican School for Girls	Extreme	Almost certain	Catastrophic	Human Settlement	Special Fire Protection	PARRAMATTA
2	1A	Hunts Creek Lower Precinct Urban Properties	Extreme	Almost certain	Catastrophic	Human Settlement	Residential	PARRAMATTA
3	1A	Darling Mills Precinct (South) Urban Properties	Extreme	Almost certain	Catastrophic	Human Settlement	Residential	PARRAMATTA
4	1B	Busaco Road	Extreme	Likely	Catastrophic	Human Settlement	Residential	RYDE
5	1B	Residential, North Ryde	Extreme	Likely	Catastrophic	Human Settlement	Residential	RYDE
6	1B	Lane Cove River Tourist Park	Extreme	Likely	Catastrophic	Human Settlement	Special Fire Protection	RYDE
7	1B	Crimea Road	Extreme	Likely	Catastrophic	Human Settlement	Residential	RYDE
8	1B	St Therese Primary School	Extreme	Likely	Catastrophic	Human Settlement	Special Fire Protection	RYDE
9	1B	Ryde Hospital	Extreme	Likely	Catastrophic	Human Settlement	Special Fire Protection	RYDE
10	1B	Montessori Pre-School	Extreme	Likely	Catastrophic	Human Settlement	Special Fire Protection	RYDE
11	1B	De Burghs Cottage	Extreme	Likely	Catastrophic	Human Settlement	Residential	RYDE
12	1B	Electricity Transmission Lines	Extreme	Likely	Catastrophic	Economic	Infrastructure	LANE COVE RYDE
13	1B	Possum Corner - child care centre	Extreme	Likely	Catastrophic	Human Settlement	Special Fire Protection	LANE COVE
14	1B	Quebec Road Residents	Extreme	Likely	Catastrophic	Human Settlement	Residential	RYDE
15	1B	KU Osborne Park Preschool	Extreme	Likely	Catastrophic	Human Settlement	Special Fire Protection	LANE COVE
16	1B	Centenary Avenue Residential	Extreme	Likely	Catastrophic	Human Settlement	Residential	PARRAMATTA
17	1B	Parramatta Dam Wall	Extreme	Likely	Catastrophic	Cultural	Non Indigenous	PARRAMATTA
18	2A	Telstra Sub Station	Very High	Likely	Major	Economic	Infrastructure	RYDE
19	2A	AusGrid facility and compound	Very High	Likely	Major	Economic	Infrastructure	RYDE
20	2A	Energy Australia Power Sub Station	Very High	Likely	Major	Economic	Infrastructure	LANE COVE
21	2A	Standish St, Greenwich	Very High	Likely	Major	Human Settlement	Residential	LANE COVE
22	2A	Wicks Road Waste Transfer Station	Very High	Likely	Major	Economic	Commercial	RYDE
23	2A	River Avenue - Residential	Very High	Likely	Major	Human Settlement	Residential	RYDE
24	2A	Riverside Corporate Park	Very High	Likely	Major	Economic	Commercial	RYDE
25	2A	Pembroke Electrical Sub Station	Very High	Likely	Major	Economic	Infrastructure	RYDE
26	2A	Terrys Creek - Residential	Very High	Likely	Major	Human Settlement	Residential	RYDE
27	2A	Kittys Creek - Residential	Very High	Likely	Major	Human Settlement	Residential	RYDE
28	2A	New Horizons	Very High	Likely	Major	Economic	Commercial	RYDE
29	2A	Field of Mars Residential 2	Very High	Likely	Major	Human Settlement	Residential	RYDE

**Annex A to
Bush Fire Coordinating Committee
Policy No. 1/2008**

30	2A	Barton Reserve Residential	Very High	Likely	Major	Human Settlement	Residential	RYDE
31	2A	Denistone Park - Residential	Very High	Likely	Major	Human Settlement	Residential	RYDE
32	2A	Darvall Park - Residential	Very High	Likely	Major	Human Settlement	Residential	RYDE
33	2A	Brush Farm Park - Residential 1	Very High	Likely	Major	Human Settlement	Residential	RYDE
34	2A	Myall Reserve - Residential	Very High	Likely	Major	Human Settlement	Residential	RYDE
35	2A	Bundara Reserve - Residential	Very High	Likely	Major	Human Settlement	Residential	RYDE
36	2A	Buffalo Creek Reserve	Very High	Likely	Major	Human Settlement	Residential	HUNTERS HILL
37	2A	Brush Farm Park Residential 2	Very High	Likely	Major	Human Settlement	Residential	RYDE
38	2A	Best Street Private Residential	Very High	Likely	Major	Human Settlement	Residential	LANE COVE
39	2A	Field of Mars Residential 1	Very High	Likely	Major	Human Settlement	Residential	RYDE
40	2A	CSIRO Radiophysics Laboratory	Very High	Likely	Major	Economic	Infrastructure	RYDE
41	2A	Warraroon Reserve West Side 2 - Riverview	Very High	Likely	Major	Human Settlement	Residential	LANE COVE
42	2A	Warraroon Reserve West Side 1 - Riverview	Very High	Likely	Major	Human Settlement	Residential	LANE COVE
43	2A	Lane Cove Industrial Estate	Very High	Likely	Major	Economic	Commercial	LANE COVE
44	2A	Loyalty Road Industrial Area	Very High	Likely	Major	Economic	Commercial	PARRAMATTA
45	2A	Moxhams Peninsula Residential	Very High	Likely	Major	Human Settlement	Residential	PARRAMATTA
46	2A	Terry Creek Residential North	Very High	Likely	Major	Human Settlement	Residential	PARRAMATTA
47	2A	Terry Creek Residential South	Very High	Likely	Major	Human Settlement	Residential	PARRAMATTA
48	2A	Newington Armoury Facility	Very High	Likely	Major	Cultural	Non Indigenous	PARRAMATTA
49	2A	Sydney Water Facility	Very High	Likely	Major	Economic	Infrastructure	RYDE
50	2B	Hunts Creek Upper Precinct Urban Properties	Very High	Possible	Catastrophic	Human Settlement	Residential	PARRAMATTA
51	3A	Koonjeree Picnic Area	High	Likely	Moderate	Economic	Tourist and Recreational	RYDE
52	3A	SC Johnson - chemical factory	High	Likely	Moderate	Economic	Commercial	LANE COVE
53	3A	Office Block - Epping Rd	High	Likely	Moderate	Economic	Commercial	LANE COVE
54	3A	Eden Garden Retail Centre	High	Likely	Moderate	Economic	Commercial	RYDE
55	3A	Northern Suburbs Cemetery	High	Likely	Moderate	Cultural	Non Indigenous	RYDE
56	3A	North Ryde RSL Club	High	Likely	Moderate	Economic	Commercial	RYDE
57	3A	Banool, Nundah Reserves	High	Likely	Moderate	Human Settlement	Residential	RYDE
58	3A	Field of Mars Cemetery	High	Likely	Moderate	Cultural	Non Indigenous	RYDE
59	3A	Field of Mars Environmental Education Centre	High	Likely	Moderate	Human Settlement	Special Fire Protection	RYDE
60	3A	Brush Farm Park Sports Facilities	High	Likely	Moderate	Economic	Tourist and Recreational	RYDE
61	3A	Tunks Hill Picnic Area	High	Likely	Moderate	Economic	Tourist and Recreational	RYDE
62	3A	Scribbly Gums Picnic Area	High	Likely	Moderate	Economic	Tourist and Recreational	RYDE
63	3A	Commandment Rock Picnic Area	High	Likely	Moderate	Economic	Tourist and Recreational	RYDE

**Annex A to
Bush Fire Coordinating Committee
Policy No. 1/2008**

64	3A	Cottonwood Glen Picnic Area	High	Likely	Moderate	Economic	Tourist and Recreational	RYDE
65	3A	Carters Creek Picnic Area	High	Likely	Moderate	Economic	Tourist and Recreational	RYDE
66	3A	Moola Picnic Area	High	Likely	Moderate	Economic	Tourist and Recreational	RYDE
67	3A	Illoura and Blue Wren Picnic Area	High	Likely	Moderate	Economic	Tourist and Recreational	RYDE
68	3A	Lane Cove Boatshed	High	Likely	Moderate	Economic	Tourist and Recreational	RYDE
69	3A	Blackman Park Synthetic Sports complex	High	Likely	Moderate	Economic	Tourist and Recreational	LANE COVE
70	3A	Northern Suburbs Crematorium & Gardens	High	Likely	Moderate	Cultural	Non Indigenous	RYDE
71	3A	Epping Aquatic Leisure Centre	High	Likely	Moderate	Economic	Tourist and Recreational	PARRAMATTA
72	3A	Christie Park	High	Likely	Moderate	Economic	Tourist and Recreational	RYDE
73	3A	Waterloo Park Residential	High	Likely	Moderate	Human Settlement	Residential	RYDE
74	3B	St Ignatius College - Riverview	High	Possible	Major	Human Settlement	Special Fire Protection	LANE COVE
75	3B	Darling Mills Ck. Precinct (Murray Farm) Urban Properties	High	Possible	Major	Human Settlement	Residential	PARRAMATTA
76	3C	Montefiore Jewish Home	High	Unlikely	Catastrophic	Human Settlement	Special Fire Protection	HUNTERS HILL
77	3C	Warraroon Reserve East Side - Longueville	High	Unlikely	Catastrophic	Human Settlement	Residential	LANE COVE
78	3C	Tennyson Park Residential - Bridge St, River Rd - Riverview	High	Unlikely	Catastrophic	Human Settlement	Residential	LANE COVE
79	3C	Tennyson Park Residential - College St Sth	High	Unlikely	Catastrophic	Human Settlement	Residential	LANE COVE
80	3C	Wood St, Lane Cove West	High	Unlikely	Catastrophic	Human Settlement	Residential	LANE COVE
81	3C	Aged and Disability Housing - Lane Cove West	High	Unlikely	Catastrophic	Human Settlement	Special Fire Protection	LANE COVE
82	3C	Greenwich Hospital	High	Unlikely	Catastrophic	Human Settlement	Special Fire Protection	LANE COVE
83	3C	East Ryde Public School	High	Unlikely	Catastrophic	Human Settlement	Special Fire Protection	RYDE
84	3C	Riverglade Reserve Residential 1	High	Unlikely	Catastrophic	Human Settlement	Residential	HUNTERS HILL
85	3C	Marist Sisters College	High	Unlikely	Catastrophic	Human Settlement	Special Fire Protection	HUNTERS HILL
86	3C	Moore St - Lane Cove West	High	Unlikely	Catastrophic	Human Settlement	Residential	LANE COVE
87	3C	Allambie Peninsula Residential	High	Unlikely	Catastrophic	Human Settlement	Residential	PARRAMATTA
88	3C	Northmead Public School	High	Unlikely	Catastrophic	Human Settlement	Special Fire Protection	PARRAMATTA
89	3C	Courtland's Age Care	High	Unlikely	Catastrophic	Human Settlement	Special Fire Protection	PARRAMATTA
90	3C	Beecroft Residential	High	Unlikely	Catastrophic	Human Settlement	Residential	PARRAMATTA
91	3C	Ryde Secondary College	High	Unlikely	Catastrophic	Human Settlement	Special Fire Protection	RYDE
92	4	Valleyview Rd, Greenwich	Medium	Unlikely	Major	Human Settlement	Residential	LANE COVE
93	4	M2 Offices & Toll points	Medium	Unlikely	Major	Economic	Infrastructure	RYDE
94	4	Fairylands	Medium	Likely	Minor	Economic	Tourist and Recreational	RYDE
95	4	Mowbray Rd, Merinda, Pinaroo Rd - Lane Cove	Medium	Unlikely	Major	Human Settlement	Residential	LANE COVE
96	4	Osborne Rd - Lane Cove	Medium	Unlikely	Major	Human Settlement	Residential	LANE COVE
97	4	Ryde SES	Medium	Likely	Minor	Human Settlement	Special Fire Protection	RYDE

**Annex A to
Bush Fire Coordinating Committee
Policy No. 1/2008**

98	4	Magdala Park	Medium	Likely	Minor	Economic	Tourist and Recreational	RYDE
99	4	Burrows Park	Medium	Unlikely	Major	Human Settlement	Residential	RYDE
100	4	Field of Mars Visitors Centre	Medium	Unlikely	Major	Human Settlement	Special Fire Protection	RYDE
101	4	De Burghs entrance box	Medium	Likely	Minor	Economic	Tourist and Recreational	RYDE
102	4	Sugarloaf Carpark	Medium	Likely	Minor	Economic	Tourist and Recreational	RYDE
103	4	Sydney Water compound River Ave	Medium	Unlikely	Major	Economic	Infrastructure	RYDE
104	4	Child Care Centre - Happy Kids Kindergarten	Medium	Unlikely	Major	Human Settlement	Special Fire Protection	LANE COVE
105	4	Orion Rd Child Care Centre	Medium	Unlikely	Major	Human Settlement	Special Fire Protection	LANE COVE
106	4	Residents - Kelly's Bush	Medium	Unlikely	Major	Human Settlement	Residential	HUNTERS HILL
107	4	Boronia Park Residential 2	Medium	Unlikely	Major	Human Settlement	Residential	HUNTERS HILL
108	4	Francis St Reserve	Medium	Unlikely	Major	Human Settlement	Residential	HUNTERS HILL
109	4	Theological College	Medium	Unlikely	Major	Human Settlement	Special Fire Protection	HUNTERS HILL
110	4	Riverglade Reserve Residential 2	Medium	Unlikely	Major	Human Settlement	Residential	HUNTERS HILL
111	4	Meriton Complex - Residential mixed use.	Medium	Unlikely	Major	Human Settlement	Residential	LANE COVE
112	4	Sherwood Street Residential	Medium	Unlikely	Major	Human Settlement	Residential	PARRAMATTA
113	4	Redbank Road Residential	Medium	Unlikely	Major	Human Settlement	Residential	PARRAMATTA
114	4	Model Farms Residential	Medium	Unlikely	Major	Human Settlement	Residential	PARRAMATTA
115	4	Yarrabee Residential	Medium	Unlikely	Major	Human Settlement	Residential	PARRAMATTA
116	4	Vineyard Creek Residential	Medium	Unlikely	Major	Human Settlement	Residential	PARRAMATTA
117	4	Galarangi Residential	Medium	Unlikely	Major	Human Settlement	Residential	PARRAMATTA
118	4	Kerry Residential	Medium	Unlikely	Major	Human Settlement	Residential	PARRAMATTA
119	4	Ryde Bus Depot	Medium	Unlikely	Major	Economic	Commercial	RYDE
120	4	East Ryde Scout Hall	Medium	Likely	Minor	Economic	Tourist and Recreational	RYDE
121	NA	Boronia Park Residential 1	Low	Unlikely	Moderate	Human Settlement	Residential	HUNTERS HILL
122	NA	Factory Warehouse - Mowbray Rd	Low	Unlikely	Moderate	Economic	Commercial	LANE COVE
123	NA	Elizabeth Pde, Gordon Cres, Kullah Pde - Lane Cove North	Low	Unlikely	Moderate	Human Settlement	Residential	LANE COVE
124	NA	Myee Cres to Cope St - Lane Cove West	Low	Unlikely	Moderate	Human Settlement	Residential	LANE COVE
125	NA	Macquarie University Sports Centre	Low	Unlikely	Minor	Economic	Tourist and Recreational	RYDE
126	NA	Brush Park Bowling Club	Low	Unlikely	Moderate	Economic	Commercial	RYDE
127	NA	Sugarloaf Point picnic area	Low	Unlikely	Minor	Economic	Tourist and Recreational	RYDE
128	NA	Blackman Park Tennis Club	Low	Unlikely	Minor	Economic	Tourist and Recreational	LANE COVE
129	NA	Epping Boys High (School)	Low	Unlikely	Moderate	Human Settlement	Special Fire Protection	RYDE
130	NA	NSP - St Ignatius College Junior School	Low	Unlikely	Moderate	Human Settlement	Other	LANE COVE
131	NA	NSP - Bayview Park Greenwich	Low	Unlikely	Moderate	Human Settlement	Other	LANE COVE

**Annex A to
Bush Fire Coordinating Committee
Policy No. 1/2008**

132	NA	NSP - Woodford Bay Bicentennial Reserve	Low	Unlikely	Moderate	Human Settlement	Other	LANE COVE
133	NA	NSP - Pottery Green Lane Cove	Low	Unlikely	Moderate	Human Settlement	Other	LANE COVE
134	NA	NSP - Kingsford Smith Oval Longueville	Low	Unlikely	Moderate	Human Settlement	Other	LANE COVE
135	NA	NSP - Linley Point Reserve	Low	Unlikely	Moderate	Human Settlement	Other	LANE COVE
136	NA	NSP - Marjorie York Playground	Low	Unlikely	Moderate	Human Settlement	Other	LANE COVE
137	NA	NSP - Carpark Macquarie Shopping Centre	Low	Unlikely	Moderate	Human Settlement	Other	RYDE
138	NA	NSP - Monash Park	Low	Unlikely	Moderate	Human Settlement	Other	RYDE
139	NA	Bundilla Scout Camp	Low	Unlikely	Minor	Economic	Tourist and Recreational	PARRAMATTA
140	NA	John Curtin Community Education Centre	Low	Unlikely	Minor	Economic	Tourist and Recreational	PARRAMATTA
141	NA	Lake Parramatta Kiosk Recreation Area	Low	Unlikely	Minor	Economic	Tourist and Recreational	PARRAMATTA

Appendix 3 Treatment Register

Non Mapped Assets

Priority (Risk Rating)	Asset ID	Asset Name	MDA	Class	Strategy	Treatment ID	Action Description	Responsible Agencies	Support Agencies	Year	Year	Year	Year	Year
1B (Extreme)	0	Aboriginal Sites - LCNP	RYDE	Cultural Heritage										
	0	Aboriginal Heritage Sites - Lane Cove	LANE COVE	Cultural Heritage										
2A (Very High)	0	Telstra Telecommunication Tower - Lane Cove West	LANE COVE	Economic	Hazard Reduction	41	SFAZ - Veneman's Reach end of Mars Rd	LGA	FRNSW	[1920]	[2021]	[2122]	[2223]	[2324]
					Hazard Reduction	29	APZ - 35 Sirius Rd Lane Cove West	Private AusGrid	LGA AusGrid	[1920]	[2021]	[2122]	[2223]	[2324]
					Hazard Reduction	27	Maintain APZ - Old Pacific Power Site	LGA Private		[1920]	[2021]	[2122]	[2223]	[2324]
					Hazard Reduction	28	APZ - Blackman Park	LGA		[1920]	[2021]	[2122]	[2223]	[2324]
					Hazard Reduction	30	LMZ - Veneman's Reach	LGA		[1920]	[2021]	[2122]	[2223]	[2324]
	0	Aboriginal Heritage Significance - Ryde	RYDE	Cultural Heritage										
	0	Porters Creek Bridge	RYDE	Cultural Heritage	Hazard Reduction	54	Maintain SFAZ - Tunks Hill	OEH	FRNSW	[1920]	[2021]	[2122]	[2223]	[2324]
	0	LCNP stonework	RYDE	Cultural Heritage										
3A (High)	0	Fauna	ALL	Environmental										
	0	Flora	ALL	Environmental										
	0	Fidden's Wharf	LANE COVE	Cultural Heritage	Hazard Reduction	54	Maintain SFAZ - Tunks Hill	OEH	FRNSW	[1920]	[2021]	[2122]	[2223]	[2324]
	0	LCNP Boatshed	RYDE	Cultural Heritage										

**Annex A to
Bush Fire Coordinating Committee
Policy No. 1/2008**

Mapped Assets

Priority (Risk Rating)	Asset ID	Asset Name	MDA	Class	Strategy	Treatment ID	Action Description	Responsible Agencies	Support Agencies	Year	Year	Year	Year	Year
1A (Extreme)	1	The Kings School & Tara Anglican School for Girls	PARRAMATTA	Human Settlement	Preparedness	5	Site inspection & review of Pre Incident Plan	FRNSW		[1920]	[2021]	[2122]	[2223]	[2324]
					Hazard Reduction	6	Undertake mechanical and / or prescribed burning	Private	FRNSW	[1920]	[2021]	[2122]	[2223]	[2324]
					Preparedness	9	Inspect fire trails and maintain as required	Private	LGA	[1920]	[2021]	[2122]	[2223]	[2324]
					Hazard Reduction	8	Manage APZ fuel by mechanical work or pile burning	Private	FRNSW	[1920]	[2021]	[2122]	[2223]	[2324]
	2	Hunts Creek Lower Precinct Urban Properties	PARRAMATTA	Human Settlement	Hazard Reduction	4	Undertake mechanical and / or prescribed burning	LGA Sydney Water	FRNSW	[1920]	[2021]	[2122]	[2223]	[2324]
					Preparedness	10	Inspect fire trails and maintain as required	LGA		[1920]	[2021]	[2122]	[2223]	[2324]
					Preparedness	11	Maintain CFU	FRNSW		[1920]	[2021]	[2122]	[2223]	[2324]
					Community Education	7	Annual letter with key bushfire safety messages.	LGA		[1920]	[2021]	[2122]	[2223]	[2324]
	3	Darling Mills Precinct (South) Urban Properties	PARRAMATTA	Human Settlement	Hazard Reduction	4	Undertake mechanical and / or prescribed burning	LGA Sydney Water	FRNSW	[1920]	[2021]	[2122]	[2223]	[2324]
					Community Education	7	Annual letter with key bushfire safety messages.	LGA		[1920]	[2021]	[2122]	[2223]	[2324]
					Preparedness	11	Maintain CFU	FRNSW		[1920]	[2021]	[2122]	[2223]	[2324]
					Preparedness	10	Inspect fire trails and maintain as required	LGA		[1920]	[2021]	[2122]	[2223]	[2324]
1B (Extreme)	4	Busaco Road	RYDE	Human Settlement	Hazard Reduction	14	SFAZ - Busaco Road	OEH		[1920]	[2021]	[2122]	[2223]	[2324]
					Hazard Reduction	23	APZ - Busaco Road	LGA OEH		[1920]	[2021]	[2122]	[2223]	[2324]
					Ignition Management	34	Restrict close reserve from public access	OEH	FRNSW Police	[1920]	[2021]	[2122]	[2223]	[2324]
					Community Education	26	Annual letter with key bushfire safety messages.	LGA		[1920]	[2021]	[2122]	[2223]	[2324]

**Annex A to
Bush Fire Coordinating Committee
Policy No. 1/2008**

	5	Residential, North Ryde	RYDE	Human Settlement	Hazard Reduction	15	SFAZ - Durham Reserve	OEH	LGA	[1920]	[2021]	[2122]	[2223]	[2324]
					Hazard Reduction	16	SFAZ - Tuckwell Place A	OEH	LGA	[1920]	[2021]	[2122]	[2223]	[2324]
					Hazard Reduction	17	SFAZ - Tuckwell Place B	OEH	LGA	[1920]	[2021]	[2122]	[2223]	[2324]
					Community Education	26	Annual letter with key bushfire safety messages.	LGA		[1920]	[2021]	[2122]	[2223]	[2324]
	6	Lane Cove River Tourist Park	RYDE	Human Settlement	Hazard Reduction	21	SFAZ - Scribbly Gums	OEH	FRNSW	[1920]	[2021]	[2122]	[2223]	[2324]
					Hazard Reduction	22	SFAZ - Carters Creek A	OEH	FRNSW	[1920]	[2021]	[2122]	[2223]	[2324]
					Community Education	26	Annual letter with key bushfire safety messages.	LGA		[1920]	[2021]	[2122]	[2223]	[2324]
					Ignition Management	34	Restrict close reserve from public access	OEH	FRNSW Police	[1920]	[2021]	[2122]	[2223]	[2324]
	7	Crimea Road	RYDE	Human Settlement	Hazard Reduction	12	SFAZ - Berriwerri Reserve	OEH	LGA	[1920]	[2021]	[2122]	[2223]	[2324]
					Hazard Reduction	13	SFAZ - Woodvale Ave	OEH	LGA;FRNSW	[1920]	[2021]	[2122]	[2223]	[2324]
					Preparedness	24	Maintain APZ	LGA Private		[1920]	[2021]	[2122]	[2223]	[2324]
					Community Education	26	Annual letter with key bushfire safety messages.	LGA		[1920]	[2021]	[2122]	[2223]	[2324]
	8	St Therese Primary School	RYDE	Human Settlement	Preparedness	24	Maintain APZ	LGA Private		[1920]	[2021]	[2122]	[2223]	[2324]
					Community Education	26	Annual letter with key bushfire safety messages.	LGA		[1920]	[2021]	[2122]	[2223]	[2324]
	9	Ryde Hospital	RYDE	Human Settlement	Hazard Reduction	25	LMZ - Ryde Hospital	Dept of Health		[1920]	[2021]	[2122]	[2223]	[2324]
	10	Montessori Preschool	RYDE	Human Settlement	Preparedness	24	Maintain APZ	LGA Private		[1920]	[2021]	[2122]	[2223]	[2324]
					Community Education	26	Annual letter with key bushfire safety messages.	LGA		[1920]	[2021]	[2122]	[2223]	[2324]
	11	De Burghs Cottage	RYDE	Human Settlement	Hazard Reduction	18	SFAZ - Riverside Drive entry	OEH	FRNSW	[1920]	[2021]	[2122]	[2223]	[2324]
					Hazard Reduction	19	SFAZ - Blue Hole	OEH	FRNSW	[1920]	[2021]	[2122]	[2223]	[2324]
					Hazard Reduction	20	SFAZ - Bloodwoods A	OEH	FRNSW	[1920]	[2021]	[2122]	[2223]	[2324]

**Annex A to
Bush Fire Coordinating Committee
Policy No. 1/2008**

2A (Very High)	12	Electricity Transmission Lines	LANE COVE;RYDE	Economic	Hazard Reduction	29	APZ - 35 Sirius Rd Lane Cove West	Private AusGrid	LGA AusGrid	[1920]	[2021]	[2122]	[2223]	[2324]
					Hazard Reduction	27	Maintain APZ - Old Pacific Power Site	LGA Private		[1920]	[2021]	[2122]	[2223]	[2324]
					Hazard Reduction	28	APZ - Blackman Park	LGA		[1920]	[2021]	[2122]	[2223]	[2324]
					Hazard Reduction	30	LMZ - Ventemans Reach	LGA		[1920]	[2021]	[2122]	[2223]	[2324]
					Hazard Reduction	31	Maintain SFAZ - Magdala Road	OEH		[1920]	[2021]	[2122]	[2223]	[2324]
	13	Possum Corner - child care centre	LANE COVE	Human Settlement	Community Education	26	Annual letter with key bushfire safety messages.	LGA		[1920]	[2021]	[2122]	[2223]	[2324]
					Hazard Reduction	32	LMZ - Epping Rd Plateau (west)	LGA		[1920]	[2021]	[2122]	[2223]	[2324]
	14	Quebec Road Residents	RYDE	Human Settlement	Hazard Reduction	35	Undertake mechanical and / or prescribed burning	LGA	FRNSW	[1920]	[2021]	[2122]	[2223]	[2324]
					Hazard Reduction	33	SFAZ - River Avenue	OEH		[1920]	[2021]	[2122]	[2223]	[2324]
	15	KU Osborne Park Preschool	LANE COVE	Human Settlement	Community Education	26	Annual letter with key bushfire safety messages.	LGA		[1920]	[2021]	[2122]	[2223]	[2324]
					Hazard Reduction	35	Undertake mechanical and / or prescribed burning	LGA	FRNSW	[1920]	[2021]	[2122]	[2223]	[2324]
	16	Centenary Avenue Residential	PARRAMATTA	Human Settlement	Community Education	26	Annual letter with key bushfire safety messages.	LGA		[1920]	[2021]	[2122]	[2223]	[2324]
					Hazard Reduction	35	Undertake mechanical and / or prescribed burning	LGA	FRNSW	[1920]	[2021]	[2122]	[2223]	[2324]
	17	Parramatta Dam Wall	PARRAMATTA	Cultural Heritage	Hazard Reduction	35	Undertake mechanical and / or prescribed burning	LGA	FRNSW	[1920]	[2021]	[2122]	[2223]	[2324]
2A (Very High)	18	Telstra Sub Station	RYDE	Economic	Hazard Reduction	61	LMZ - Darvall Park	LGA		[1920]	[2021]	[2122]	[2223]	[2324]
	19	AusGrid facility and compound	RYDE	Economic	Preparedness	57	Maintain agency maintenance / inspection program.	Energy agency		[1920]	[2021]	[2122]	[2223]	[2324]
	20	Energy Australia Power Sub Station	LANE COVE	Economic	Hazard Reduction	40	SFAZ - Ventemans Reach (below Mars Rd)	LGA	AusGrid	[1920]	[2021]	[2122]	[2223]	[2324]
					Preparedness	57	Maintain agency maintenance / inspection program.	Energy agency		[1920]	[2021]	[2122]	[2223]	[2324]
	21	Standish St, Greenwich	LANE COVE	Human Settlement	Hazard Reduction	39	APZ - Lane Cove Golf Course & River Rd	LGA		[1920]	[2021]	[2122]	[2223]	[2324]
					Community Education	58	Annual letter with key bushfire safety	LGA		[1920]	[2021]	[2122]	[2223]	[2324]
					Hazard Reduction	38	LMZ - Gore Creek Reserve	LGA		[1920]	[2021]	[2122]	[2223]	[2324]
	22	Wicks Road Waste Transfer Station	RYDE	Economic	Hazard Reduction	66	Undertake mechanical and / or prescribed burning	LGA	FRNSW	[1920]	[2021]	[2122]	[2223]	[2324]

**Annex A to
Bush Fire Coordinating Committee
Policy No. 1/2008**

	23	River Avenue - Residential	RYDE	Human Settlement	Hazard Reduction	44	SFAZ - Kobada Rocks	OEH		[1920]	[2021]	[2122]	[2223]	[2324]
					Hazard Reduction	45	SFAZ - Quebec Road	LGA OEH	FRNSW	[1920]	[2021]	[2122]	[2223]	[2324]
					Hazard Reduction	33	SFAZ - River Avenue	OEH		[1920]	[2021]	[2122]	[2223]	[2324]
					Community Education	26	Annual letter with key bushfire safety messages.	LGA		[1920]	[2021]	[2122]	[2223]	[2324]
	24	Riverside Corporate Park	RYDE	Economic	Hazard Reduction	43	SFAZ - Delhi Road A	OEH	FRNSW	[1920]	[2021]	[2122]	[2223]	[2324]
	25	Pembroke Electrical Sub Station	RYDE	Economic	Hazard Reduction	62	Maintain APZ	LGA AusGrid		[1920]	[2021]	[2122]	[2223]	[2324]
					Hazard Reduction	49	LMZ - Pembroke Park	LGA	FRNSW	[1920]	[2021]	[2122]	[2223]	[2324]
	26	Terrys Creek - Residential	RYDE	Human Settlement	Hazard Reduction	49	LMZ - Pembroke Park	LGA	FRNSW	[1920]	[2021]	[2122]	[2223]	[2324]
					Hazard Reduction	62	Maintain APZ	LGA AusGrid		[1920]	[2021]	[2122]	[2223]	[2324]
					Community Education	58	Annual letter with key bushfire safety	LGA		[1920]	[2021]	[2122]	[2223]	[2324]
	27	Kittys Creek - Residential	RYDE	Human Settlement	Hazard Reduction	42	LMZ - Portius Park	LGA	FRNSW	[1920]	[2021]	[2122]	[2223]	[2324]
					Hazard Reduction	46	SFAZ - Wallumatta Nature Reserve	OEH		[1920]	[2021]	[2122]	[2223]	[2324]
					Hazard Reduction	62	Maintain APZ	LGA AusGrid		[1920]	[2021]	[2122]	[2223]	[2324]
					Community Education	58	Annual letter with key bushfire safety	LGA		[1920]	[2021]	[2122]	[2223]	[2324]
	28	New Horizons	RYDE	Economic	Hazard Reduction	46	SFAZ - Wallumatta Nature Reserve	OEH		[1920]	[2021]	[2122]	[2223]	[2324]
	29	Field of Mars Residential 2	RYDE	Human Settlement	Hazard Reduction	36	LMZ Field of Mars - Manage fuel loads as required	LGA	FRNSW	[1920]	[2021]	[2122]	[2223]	[2324]
					Hazard Reduction	62	Maintain APZ	LGA AusGrid		[1920]	[2021]	[2122]	[2223]	[2324]
					Community Education	58	Annual letter with key bushfire safety	LGA		[1920]	[2021]	[2122]	[2223]	[2324]
	30	Barton Reserve Residential	RYDE	Human Settlement	Hazard Reduction	48	LMZ - Barton Reserve	LGA	FRNSW	[1920]	[2021]	[2122]	[2223]	[2324]
					Hazard Reduction	62	Maintain APZ	LGA AusGrid		[1920]	[2021]	[2122]	[2223]	[2324]
					Community Education	58	Annual letter with key bushfire safety	LGA		[1920]	[2021]	[2122]	[2223]	[2324]
	31	Denistone Park - Residential	RYDE	Human Settlement	Hazard Reduction	50	LMZ - Denistone Park	LGA	FRNSW	[1920]	[2021]	[2122]	[2223]	[2324]
					Hazard Reduction	62	Maintain APZ	LGA AusGrid		[1920]	[2021]	[2122]	[2223]	[2324]
					Community Education	58	Annual letter with key bushfire safety	LGA		[1920]	[2021]	[2122]	[2223]	[2324]

**Annex A to
Bush Fire Coordinating Committee
Policy No. 1/2008**

	32	Darvall Park - Residential	RYDE	Human Settlement	Hazard Reduction	37	LMZ - Darvall Park	LGA		[1920]	[2021]	[2122]	[2223]	[2324]
					Hazard Reduction	62	Maintain APZ	LGA AusGrid		[1920]	[2021]	[2122]	[2223]	[2324]
					Community Education	58	Annual letter with key bushfire safety	LGA		[1920]	[2021]	[2122]	[2223]	[2324]
	33	Brush Farm Park - Residential 1	RYDE	Human Settlement	Hazard Reduction	51	LMZ - Brush Farm Park	LGA	FRNSW	[1920]	[2021]	[2122]	[2223]	[2324]
	34	Myall Reserve - Residential	RYDE	Human Settlement	Hazard Reduction	62	Maintain APZ	LGA AusGrid		[1920]	[2021]	[2122]	[2223]	[2324]
					Hazard Reduction	52	LMZ - Myall Reserve	LGA	FRNSW	[1920]	[2021]	[2122]	[2223]	[2324]
	35	Bundara Reserve - Residential	RYDE	Human Settlement	Hazard Reduction	53	LMZ - Bundara Reserve	LGA	FRNSW	[1920]	[2021]	[2122]	[2223]	[2324]
	36	Buffalo Creek Reserve	HUNTERS HILL	Human Settlement	Hazard Reduction	56	LMZ Field of Mars - Manage fuel loads as required	LGA	FRNSW	[1920]	[2021]	[2122]	[2223]	[2324]
					Hazard Reduction	47	LMZ - Lane Cove Nat Park Fire Management Strategy	OEH	LGA;FRNSW	[1920]	[2021]	[2122]	[2223]	[2324]
					Community Education	58	Annual letter with key bushfire safety	LGA		[1920]	[2021]	[2122]	[2223]	[2324]
	37	Brush Farm Park Residential 2	RYDE	Human Settlement	Hazard Reduction	51	LMZ - Brush Farm Park	LGA	FRNSW	[1920]	[2021]	[2122]	[2223]	[2324]
	38	Best Street Private Residential	LANE COVE	Human Settlement	Community Education	58	Annual letter with key bushfire safety	LGA		[1920]	[2021]	[2122]	[2223]	[2324]
					Hazard Reduction	59	Undertake mechanical and / or prescribed burning	LGA	FRNSW	[1920]	[2021]	[2122]	[2223]	[2324]
	39	Field of Mars Residential 1	RYDE	Human Settlement	Community Education	58	Annual letter with key bushfire safety	LGA		[1920]	[2021]	[2122]	[2223]	[2324]
					Hazard Reduction	62	Maintain APZ	LGA AusGrid		[1920]	[2021]	[2122]	[2223]	[2324]
					Hazard Reduction	36	LMZ Field of Mars - Manage fuel loads as required	LGA	FRNSW	[1920]	[2021]	[2122]	[2223]	[2324]
	40	CSIRO Radiophysics Laboratory	RYDE	Economic	Hazard Reduction	49	LMZ - Pembroke Park	LGA	FRNSW	[1920]	[2021]	[2122]	[2223]	[2324]
	41	Warraroon Reserve West Side 2 - Riverview	LANE COVE	Human Settlement	Community Education	58	Annual letter with key bushfire safety	LGA		[1920]	[2021]	[2122]	[2223]	[2324]
					Hazard Reduction	55	LMZ - Warraroon Reserve	LGA	FRNSW	[1920]	[2021]	[2122]	[2223]	[2324]
	42	Warraroon Reserve West Side 1 - Riverview	LANE COVE	Human Settlement	Community Education	58	Annual letter with key bushfire safety	LGA		[1920]	[2021]	[2122]	[2223]	[2324]
					Hazard Reduction	55	LMZ - Warraroon Reserve	LGA	FRNSW	[1920]	[2021]	[2122]	[2223]	[2324]
					Hazard Reduction	60	APZ - Maintain fuel loads	LGA		[1920]	[2021]	[2122]	[2223]	[2324]
	43	Lane Cove Industrial Estate	LANE COVE	Economic	Hazard Reduction	40	SFAZ - Ventemans Reach (below Mars Rd)	LGA	AusGrid	[1920]	[2021]	[2122]	[2223]	[2324]
					Preparedness	57	Maintain agency maintenance / inspection program.	Energy agency		[1920]	[2021]	[2122]	[2223]	[2324]
					Hazard Reduction	30	LMZ - Ventemans Reach	LGA		[1920]	[2021]	[2122]	[2223]	[2324]

**Annex A to
Bush Fire Coordinating Committee
Policy No. 1/2008**

	44	Loyalty Road Industrial Area	PARRAMATTA	Economic	Hazard Reduction	63	Inspect APZ's and maintain as required	LGA		[1920]	[2021]	[2122]	[2223]	[2324]
					Hazard Reduction	64	Undertake mechanical and / or prescribed burning	LGA Private	FRNSW	[1920]	[2021]	[2122]	[2223]	[2324]
	45	Moxhams Peninsula Residential	PARRAMATTA	Human Settlement	Hazard Reduction	64	Undertake mechanical and / or prescribed burning	LGA Private	FRNSW	[1920]	[2021]	[2122]	[2223]	[2324]
					Community Education	58	Annual letter with key bushfire safety	LGA		[1920]	[2021]	[2122]	[2223]	[2324]
	46	Terry Creek Residential North	PARRAMATTA	Human Settlement	Community Education	58	Annual letter with key bushfire safety	LGA		[1920]	[2021]	[2122]	[2223]	[2324]
					Hazard Reduction	64	Undertake mechanical and / or prescribed burning	LGA Private	FRNSW	[1920]	[2021]	[2122]	[2223]	[2324]
	47	Terry Creek Residential South	PARRAMATTA	Human Settlement	Community Education	58	Annual letter with key bushfire safety	LGA		[1920]	[2021]	[2122]	[2223]	[2324]
2B (Very High)					Hazard Reduction	64	Undertake mechanical and / or prescribed burning	LGA Private	FRNSW	[1920]	[2021]	[2122]	[2223]	[2324]
	48	Newington Armoury Facility	PARRAMATTA	Cultural Heritage	Hazard Reduction	65	Undertake mechanical and / or prescribed burning	OEH SOPA	FRNSW	[1920]	[2021]	[2122]	[2223]	[2324]
	49	Sydney Water Facility	RYDE	Economic	Hazard Reduction	59	Undertake mechanical and / or prescribed burning	LGA	FRNSW	[1920]	[2021]	[2122]	[2223]	[2324]
3A (High)	50	Hunts Creek Upper Precinct Urban Properties	PARRAMATTA	Human Settlement	Preparedness	67	Inspect fire trails and maintain as required	LGA		[1920]	[2021]	[2122]	[2223]	[2324]
					Preparedness	68	Maintain CFU	FRNSW		[1920]	[2021]	[2122]	[2223]	[2324]
					Hazard Reduction	66	Undertake mechanical and / or prescribed burning	LGA	FRNSW	[1920]	[2021]	[2122]	[2223]	[2324]
	51	Koonjeree Picnic Area	RYDE	Economic	Hazard Reduction	70	SFAZ - Delhi Road entrance	OEH		[1920]	[2021]	[2122]	[2223]	[2324]
	52	SC Johnson - chemical factory	LANE COVE	Economic	Hazard Reduction	69	LMZ - Lake at SC Johnson	Private	LGA	[1920]	[2021]	[2122]	[2223]	[2324]
					Preparedness	80	Undertake annual maintenance roster / inspection	Private		[1920]	[2021]	[2122]	[2223]	[2324]
	53	Office Block - Epping Rd	LANE COVE	Economic	Preparedness	80	Undertake annual maintenance roster / inspection	Private		[1920]	[2021]	[2122]	[2223]	[2324]
					Hazard Reduction	72	Maintain LMZ - Pumphouse Reserve	LGA	FRNSW	[1920]	[2021]	[2122]	[2223]	[2324]
	54	Eden Garden Retail Centre	RYDE	Economic	Hazard Reduction	73	APZ - Mown area	OEH		[1920]	[2021]	[2122]	[2223]	[2324]
					Hazard Reduction	74	APZ - Tunks Hill	OEH		[1920]	[2021]	[2122]	[2223]	[2324]
	55	Northern Suburbs Cemetery	RYDE	Cultural Heritage	Hazard Reduction	84	Undertake mechanical or prescribed burning	OEH	FRNSW	[1920]	[2021]	[2122]	[2223]	[2324]
	56	North Ryde RSL Club	RYDE	Economic	Hazard Reduction	82	Maintain APZ	OEH		[1920]	[2021]	[2122]	[2223]	[2324]
	57	Banool, Nundah Reserves	RYDE	Human Settlement	Hazard Reduction	79	SFAZ - Nundah reserve	OEH		[1920]	[2021]	[2122]	[2223]	[2324]
					Hazard Reduction	82	Maintain APZ	OEH		[1920]	[2021]	[2122]	[2223]	[2324]

**Annex A to
Bush Fire Coordinating Committee
Policy No. 1/2008**

	58	Field of Mars Cemetery	RYDE	Cultural Heritage	Preparedness	80	Undertake annual maintenance roster / inspection	Private		[1920]	[2021]	[2122]	[2223]	[2324]
					Hazard Reduction	81	Undertake mechanical and / or prescribed burning	LGA	FRNSW	[1920]	[2021]	[2122]	[2223]	[2324]
					Hazard Reduction	83	Maintain APZ	LGA		[1920]	[2021]	[2122]	[2223]	[2324]
	59	Field of Mars Environmental Education Centre	RYDE	Human Settlement	Hazard Reduction	81	Undertake mechanical and / or prescribed burning	LGA	FRNSW	[1920]	[2021]	[2122]	[2223]	[2324]
					Preparedness	80	Undertake annual maintenance roster / inspection	Private		[1920]	[2021]	[2122]	[2223]	[2324]
	60	Brush Farm Park Sports Facilities	RYDE	Economic	Hazard Reduction	83	Maintain APZ	LGA		[1920]	[2021]	[2122]	[2223]	[2324]
					Hazard Reduction	81	Undertake mechanical and / or prescribed burning	LGA	FRNSW	[1920]	[2021]	[2122]	[2223]	[2324]
	61	Tunks Hill Picnic Area	RYDE	Economic	Hazard Reduction	74	APZ - Tunks Hill	OEH		[1920]	[2021]	[2122]	[2223]	[2324]
					Hazard Reduction	54	Maintain SFAZ - Tunks Hill	OEH	FRNSW	[1920]	[2021]	[2122]	[2223]	[2324]
	62	Scribbly Gums Picnic Area	RYDE	Economic	Hazard Reduction	21	SFAZ - Scribbly Gums	OEH	FRNSW	[1920]	[2021]	[2122]	[2223]	[2324]
					Hazard Reduction	75	SFAZ - Commandment Rock	OEH	FRNSW	[1920]	[2021]	[2122]	[2223]	[2324]
	63	Commandment Rock Picnic Area	RYDE	Economic	Hazard Reduction	75	SFAZ - Commandment Rock	OEH	FRNSW	[1920]	[2021]	[2122]	[2223]	[2324]
	64	Cottonwood Glen Picnic Area	RYDE	Economic	Hazard Reduction	75	SFAZ - Commandment Rock	OEH	FRNSW	[1920]	[2021]	[2122]	[2223]	[2324]
	65	Carters Creek Picnic Area	RYDE	Economic	Hazard Reduction	76	SFAZ - Delhi Road B	OEH	FRNSW	[1920]	[2021]	[2122]	[2223]	[2324]
					Hazard Reduction	77	SFAZ - Ironbark Corner	OEH		[1920]	[2021]	[2122]	[2223]	[2324]
	66	Moola Picnic Area	RYDE	Economic	Hazard Reduction	78	SFAZ - Moola/Illoura/Koonjeree picnic areas	OEH		[1920]	[2021]	[2122]	[2223]	[2324]
	67	Illoura and Blue Wren Picnic Area	RYDE	Economic	Hazard Reduction	78	SFAZ - Moola/Illoura/Koonjeree picnic areas	OEH		[1920]	[2021]	[2122]	[2223]	[2324]
					Hazard Reduction	71	SFAZ - Delhi Road C	OEH		[1920]	[2021]	[2122]	[2223]	[2324]
	68	Lane Cove Boatshed	RYDE	Economic	Hazard Reduction	78	SFAZ - Moola/Illoura/Koonjeree picnic areas	OEH		[1920]	[2021]	[2122]	[2223]	[2324]
	69	Blackman Park Synthetic Sports complex	LANE COVE	Economic	Hazard Reduction	81	Undertake mechanical and / or prescribed burning	LGA	FRNSW	[1920]	[2021]	[2122]	[2223]	[2324]
	70	Northern Suburbs Crematorium & Gardens	RYDE	Cultural Heritage	Hazard Reduction	71	SFAZ - Delhi Road C	OEH		[1920]	[2021]	[2122]	[2223]	[2324]
					Hazard Reduction	78	SFAZ - Moola/Illoura/Koonjeree picnic areas	OEH		[1920]	[2021]	[2122]	[2223]	[2324]
	71	Epping Aquatic Leisure Centre	PARRAMATTA	Economic	Hazard Reduction	81	Undertake mechanical and / or prescribed burning	LGA	FRNSW	[1920]	[2021]	[2122]	[2223]	[2324]
	72	Christie Park	RYDE	Economic	Hazard Reduction	81	Undertake mechanical and / or prescribed burning	LGA	FRNSW	[1920]	[2021]	[2122]	[2223]	[2324]
					Hazard Reduction	83	Maintain APZ	LGA		[1920]	[2021]	[2122]	[2223]	[2324]

**Annex A to
Bush Fire Coordinating Committee
Policy No. 1/2008**

	73	Waterloo Park Residential	RYDE	Human Settlement	Hazard Reduction	86	SFAZ - Busaco Road	OEH		[1920]	[2021]	[2122]	[2223]	[2324]
					Community Education	85	Annual letter with key bushfire safety messages	LGA		[1920]	[2021]	[2122]	[2223]	[2324]
3B (High)	74	St Ignatius College - Riverview	LANE COVE	Human Settlement	Preparedness	87	Maintain CFU	Private	FRNSW	[1920]	[2021]	[2122]	[2223]	[2324]
					Hazard Reduction	88	Undertake mechanical and / or prescribed burning	Private	FRNSW	[1920]	[2021]	[2122]	[2223]	[2324]
	75	Darling Mills Ck. Precinct (Murray Farm) Urban Properties	PARRAMATTA	Human Settlement	Hazard Reduction	89	Undertake mechanical and / or prescribed burning	LGA RMS	FRNSW	[1920]	[2021]	[2122]	[2223]	[2324]
					Community Education	90	Annual letter with key bushfire safety messages.	LGA		[1920]	[2021]	[2122]	[2223]	[2324]
3C (High)	76	Montefiore Jewish Home	HUNTERS HILL	Human Settlement	Hazard Reduction	92	Maintain APZ - Boronia Park	LGA		[1920]	[2021]	[2122]	[2223]	[2324]
					Community Education	85	Annual letter with key bushfire safety messages	LGA		[1920]	[2021]	[2122]	[2223]	[2324]
	77	Warraroon Reserve East Side - Longueville	LANE COVE	Human Settlement	Hazard Reduction	60	APZ - Maintain fuel loads	LGA		[1920]	[2021]	[2122]	[2223]	[2324]
					Hazard Reduction	55	LMZ - Warraroon Reserve	LGA	FRNSW	[1920]	[2021]	[2122]	[2223]	[2324]
					Community Education	58	Annual letter with key bushfire safety	LGA		[1920]	[2021]	[2122]	[2223]	[2324]
	78	Tennyson Park Residential - Bridge St, River Rd - Riverview	LANE COVE	Human Settlement	Community Education	85	Annual letter with key bushfire safety messages	LGA		[1920]	[2021]	[2122]	[2223]	[2324]
					Hazard Reduction	95	LMZ - Tennyson Park	LGA	FRNSW	[1920]	[2021]	[2122]	[2223]	[2324]
	79	Tennyson Park Residential - College St Sth	LANE COVE	Human Settlement	Hazard Reduction	95	LMZ - Tennyson Park	LGA	FRNSW	[1920]	[2021]	[2122]	[2223]	[2324]
					Community Education	85	Annual letter with key bushfire safety messages	LGA		[1920]	[2021]	[2122]	[2223]	[2324]
	80	Wood St, Lane Cove West	LANE COVE	Human Settlement	Hazard Reduction	100	Undertake mechanical and / or prescribed burning	LGA	FRNSW	[1920]	[2021]	[2122]	[2223]	[2324]
					Community Education	85	Annual letter with key bushfire safety messages	LGA		[1920]	[2021]	[2122]	[2223]	[2324]
	81	Aged and Disability Housing - Lane Cove West	LANE COVE	Human Settlement	Hazard Reduction	101	APZ - Maintain fuel loads	LGA		[1920]	[2021]	[2122]	[2223]	[2324]
					Hazard Reduction	96	LMZ - Lovetts Reserve / Blackman Park	LGA		[1920]	[2021]	[2122]	[2223]	[2324]
	82	Greenwich Hospital	LANE COVE	Human Settlement	Preparedness	102	Site inspection & review of Pre Incident Plan	FRNSW		[1920]	[2021]	[2122]	[2223]	[2324]
					Hazard Reduction	93	LMZ - Bob Campbell Oval	LGA		[1920]	[2021]	[2122]	[2223]	[2324]
					Hazard Reduction	94	LMZ - Gore Creek Reserve	LGA		[1920]	[2021]	[2122]	[2223]	[2324]
	83	East Ryde Public School	RYDE	Human Settlement	Community Education	85	Annual letter with key bushfire safety messages	LGA		[1920]	[2021]	[2122]	[2223]	[2324]
					Preparedness	102	Site inspection & review of Pre Incident Plan	FRNSW		[1920]	[2021]	[2122]	[2223]	[2324]

**Annex A to
Bush Fire Coordinating Committee
Policy No. 1/2008**

	84	Riverglade Reserve Residential 1	HUNTERS HILL	Human Settlement	Community Education	85	Annual letter with key bushfire safety messages	LGA		[1920]	[2021]	[2122]	[2223]	[2324]
					Hazard Reduction	98	Maintain APZ - Richmond Cres	LGA		[1920]	[2021]	[2122]	[2223]	[2324]
					Hazard Reduction	99	Maintain APZ - Riverglade Reserve	LGA		[1920]	[2021]	[2122]	[2223]	[2324]
	85	Marist Sisters College	HUNTERS HILL	Human Settlement	Community Education	85	Annual letter with key bushfire safety messages	LGA		[1920]	[2021]	[2122]	[2223]	[2324]
					Hazard Reduction	97	Maintain APZ - Weil Park Sport Field	LGA		[1920]	[2021]	[2122]	[2223]	[2324]
					Preparedness	102	Site inspection & review of Pre Incident Plan	FRNSW		[1920]	[2021]	[2122]	[2223]	[2324]
	86	Moore St - Lane Cove West	LANE COVE	Human Settlement	Community Education	85	Annual letter with key bushfire safety messages	LGA		[1920]	[2021]	[2122]	[2223]	[2324]
					Hazard Reduction	91	LMZ - Lower Stringybark Creek (below Epping Rd)	LGA		[1920]	[2021]	[2122]	[2223]	[2324]
	87	Allambie Peninsula Residential	PARRAMATTA	Human Settlement	Community Education	85	Annual letter with key bushfire safety messages	LGA		[1920]	[2021]	[2122]	[2223]	[2324]
					Hazard Reduction	100	Undertake mechanical and / or prescribed burning	LGA	FRNSW	[1920]	[2021]	[2122]	[2223]	[2324]
	88	Northmead Public School	PARRAMATTA	Human Settlement	Hazard Reduction	100	Undertake mechanical and / or prescribed burning	LGA	FRNSW	[1920]	[2021]	[2122]	[2223]	[2324]
					Preparedness	102	Site inspection & review of Pre Incident Plan	FRNSW		[1920]	[2021]	[2122]	[2223]	[2324]
4 (Medium)	89	Courtland's Age Care	PARRAMATTA	Human Settlement	Hazard Reduction	100	Undertake mechanical and / or prescribed burning	LGA	FRNSW	[1920]	[2021]	[2122]	[2223]	[2324]
					Preparedness	102	Site inspection & review of Pre Incident Plan	FRNSW		[1920]	[2021]	[2122]	[2223]	[2324]
	90	Beecroft Residential	PARRAMATTA	Human Settlement	Community Education	85	Annual letter with key bushfire safety messages	LGA		[1920]	[2021]	[2122]	[2223]	[2324]
					Hazard Reduction	100	Undertake mechanical and / or prescribed burning	LGA	FRNSW	[1920]	[2021]	[2122]	[2223]	[2324]
	91	Ryde Secondary College	RYDE	Human Settlement	Preparedness	102	Site inspection & review of Pre Incident Plan	FRNSW		[1920]	[2021]	[2122]	[2223]	[2324]
					Hazard Reduction	100	Undertake mechanical and / or prescribed burning	LGA	FRNSW	[1920]	[2021]	[2122]	[2223]	[2324]
	92	Valleyview Rd, Greenwich	LANE COVE	Human Settlement	Community Education	113	Annual letter with key bushfire safety messages.	LGA		[1920]	[2021]	[2122]	[2223]	[2324]
					Hazard Reduction	105	Maintain LMZ - Bushland Park (eastern embankment)	LGA		[1920]	[2021]	[2122]	[2223]	[2324]
	93	M2 Offices & Toll points	RYDE	Economic	Hazard Reduction	106	APZ - create and maintain	Private	RMS	[1920]	[2021]	[2122]	[2223]	[2324]
					Hazard Reduction	115	Undertake mechanical and / or prescribed burning	LGA	FRNSW	[1920]	[2021]	[2122]	[2223]	[2324]
	94	Fairylands	RYDE	Economic	Hazard Reduction	84	Undertake mechanical or prescribed burning	OEH	FRNSW	[1920]	[2021]	[2122]	[2223]	[2324]

**Annex A to
Bush Fire Coordinating Committee
Policy No. 1/2008**

	95	Mowbray Rd, Merinda, Pinaroo Rd - Lane Cove	LANE COVE	Human Settlement	Hazard Reduction	103	Maintain APZ Epping Rd, Orion Road, Moore St	LGA RMS		[1920]	[2021]	[2122]	[2223]	[2324]
					Hazard Reduction	107	SFAZ - Epping Rd Plateau	LGA	FRNSW	[1920]	[2021]	[2122]	[2223]	[2324]
					Hazard Reduction	108	SFAZ - Batten Reserve - Pinaroo St	LGA	FRNSW	[1920]	[2021]	[2122]	[2223]	[2324]
					Hazard Reduction	104	LMZ - Batten Reserve	LGA	FRNSW	[1920]	[2021]	[2122]	[2223]	[2324]
	96	Osborne Rd - Lane Cove	LANE COVE	Human Settlement	Hazard Reduction	109	LMZ - Osborne Rd	LGA	FRNSW	[1920]	[2021]	[2122]	[2223]	[2324]
					Community Education	58	Annual letter with key bushfire safety	LGA		[1920]	[2021]	[2122]	[2223]	[2324]
					Community Education	113	Annual letter with key bushfire safety messages.	LGA		[1920]	[2021]	[2122]	[2223]	[2324]
	97	Ryde SES	RYDE	Human Settlement	Hazard Reduction	115	Undertake mechanical and / or prescribed burning	LGA	FRNSW	[1920]	[2021]	[2122]	[2223]	[2324]
	98	Magdala Park	RYDE	Economic	Hazard Reduction	115	Undertake mechanical and / or prescribed burning	LGA	FRNSW	[1920]	[2021]	[2122]	[2223]	[2324]
	99	Burrows Park	RYDE	Human Settlement	Hazard Reduction	117	Maintain APZ	LGA		[1920]	[2021]	[2122]	[2223]	[2324]
					Community Education	113	Annual letter with key bushfire safety messages.	LGA		[1920]	[2021]	[2122]	[2223]	[2324]
					Hazard Reduction	115	Undertake mechanical and / or prescribed burning	LGA	FRNSW	[1920]	[2021]	[2122]	[2223]	[2324]
	100	Field of Mars Visitors Centre	RYDE	Human Settlement	Hazard Reduction	115	Undertake mechanical and / or prescribed burning	LGA	FRNSW	[1920]	[2021]	[2122]	[2223]	[2324]
	101	De Burghs entrance box	RYDE	Economic	Hazard Reduction	110	SFAZ - Bloodwoods B	OEH	FRNSW	[1920]	[2021]	[2122]	[2223]	[2324]
					Hazard Reduction	111	SFAZ - Riverside Drive VES	FRNSW	FRNSW	[1920]	[2021]	[2122]	[2223]	[2324]
	102	Sugarloaf Carpark	RYDE	Economic	Hazard Reduction	119	Undertake mechanical and / or prescribed burning	OEH	FRNSW	[1920]	[2021]	[2122]	[2223]	[2324]
	103	Sydney Water compound River Ave	RYDE	Economic	Hazard Reduction	33	SFAZ - River Avenue	OEH		[1920]	[2021]	[2122]	[2223]	[2324]
	104	Child Care Centre - Happy Kids Kindergarten	LANE COVE	Human Settlement	Hazard Reduction	107	SFAZ - Epping Rd Plateau	LGA	FRNSW	[1920]	[2021]	[2122]	[2223]	[2324]
					Hazard Reduction	104	LMZ - Batten Reserve	LGA	FRNSW	[1920]	[2021]	[2122]	[2223]	[2324]
					Community Education	113	Annual letter with key bushfire safety messages.	LGA		[1920]	[2021]	[2122]	[2223]	[2324]
	105	Orion Rd Child Care Centre	LANE COVE	Human Settlement	Hazard Reduction	103	Maintain APZ Epping Rd, Orion Road, Moore St	LGA RMS		[1920]	[2021]	[2122]	[2223]	[2324]
					Community Education	113	Annual letter with key bushfire safety messages.	LGA		[1920]	[2021]	[2122]	[2223]	[2324]
	106	Residents - Kelly's Bush	HUNTERS HILL	Human Settlement	Hazard Reduction	114	Maintain APZ	LGA		[1920]	[2021]	[2122]	[2223]	[2324]
			HUNTERS HILL	Human Settlement	Community Education	113	Annual letter with key bushfire safety messages.	LGA		[1920]	[2021]	[2122]	[2223]	[2324]
	107	Boronia Park Residential 2	HUNTERS HILL	Human Settlement	Hazard Reduction	112	Maintain APZ - Boronia Park	LGA		[1920]	[2021]	[2122]	[2223]	[2324]
					Community Education	113	Annual letter with key bushfire safety messages.	LGA		[1920]	[2021]	[2122]	[2223]	[2324]

**Annex A to
Bush Fire Coordinating Committee
Policy No. 1/2008**

	108	Francis St Reserve	HUNTERS HILL	Human Settlement	Community Education	113	Annual letter with key bushfire safety messages.	LGA		[1920]	[2021]	[2122]	[2223]	[2324]
	109	Theological College	HUNTERS HILL	Human Settlement	Hazard Reduction	118	Undertake mechanical and / or prescribed burning	Private	FRNSW	[1920]	[2021]	[2122]	[2223]	[2324]
	110	Riverglade Reserve Residential 2	HUNTERS HILL	Human Settlement	Community Education	113	Annual letter with key bushfire safety messages.	LGA		[1920]	[2021]	[2122]	[2223]	[2324]
	111	Meriton Complex - Residential mixed use.	LANE COVE	Human Settlement	Preparedness	116	Undertake annual maintenance roster / inspection	Private		[1920]	[2021]	[2122]	[2223]	[2324]
	112	Sherwood Street Residential	PARRAMATTA	Human Settlement	Community Education	113	Annual letter with key bushfire safety messages.	LGA		[1920]	[2021]	[2122]	[2223]	[2324]
					Hazard Reduction	115	Undertake mechanical and / or prescribed burning	LGA	FRNSW	[1920]	[2021]	[2122]	[2223]	[2324]
	113	Redbank Road Residential	PARRAMATTA	Human Settlement	Community Education	113	Annual letter with key bushfire safety messages.	LGA		[1920]	[2021]	[2122]	[2223]	[2324]
					Hazard Reduction	115	Undertake mechanical and / or prescribed burning	LGA	FRNSW	[1920]	[2021]	[2122]	[2223]	[2324]
	114	Model Farms Residential	PARRAMATTA	Human Settlement	Hazard Reduction	115	Undertake mechanical and / or prescribed burning	LGA	FRNSW	[1920]	[2021]	[2122]	[2223]	[2324]
					Community Education	113	Annual letter with key bushfire safety messages.	LGA		[1920]	[2021]	[2122]	[2223]	[2324]
	115	Yarrabee Residential	PARRAMATTA	Human Settlement	Hazard Reduction	115	Undertake mechanical and / or prescribed burning	LGA	FRNSW	[1920]	[2021]	[2122]	[2223]	[2324]
					Community Education	113	Annual letter with key bushfire safety messages.	LGA		[1920]	[2021]	[2122]	[2223]	[2324]
	116	Vineyard Creek Residential	PARRAMATTA	Human Settlement	Community Education	113	Annual letter with key bushfire safety messages.	LGA		[1920]	[2021]	[2122]	[2223]	[2324]
					Hazard Reduction	115	Undertake mechanical and / or prescribed burning	LGA	FRNSW	[1920]	[2021]	[2122]	[2223]	[2324]
	117	Galaringi Residential	PARRAMATTA	Human Settlement	Community Education	113	Annual letter with key bushfire safety messages.	LGA		[1920]	[2021]	[2122]	[2223]	[2324]
					Hazard Reduction	115	Undertake mechanical and / or prescribed burning	LGA	FRNSW	[1920]	[2021]	[2122]	[2223]	[2324]
	118	Kerry Residential	PARRAMATTA	Human Settlement	Community Education	113	Annual letter with key bushfire safety messages.	LGA		[1920]	[2021]	[2122]	[2223]	[2324]
					Hazard Reduction	115	Undertake mechanical and / or prescribed burning	LGA	FRNSW	[1920]	[2021]	[2122]	[2223]	[2324]
	119	Ryde Bus Depot	RYDE	Economic	Hazard Reduction	115	Undertake mechanical and / or prescribed burning	LGA	FRNSW	[1920]	[2021]	[2122]	[2223]	[2324]
	120	East Ryde Scout Hall	RYDE	Economic	Community Education	113	Annual letter with key bushfire safety messages.	LGA		[1920]	[2021]	[2122]	[2223]	[2324]
NA (Low)	121	Boronia Park Residential 1	HUNTERS HILL	Human Settlement	Hazard Reduction	127	Maintain APZ - Princes St	LGA		[1920]	[2021]	[2122]	[2223]	[2324]
	122	Factory Warehouse - Mowbray Rd	LANE COVE	Economic	Hazard Reduction	128	LMZ - Epping Plateau	LGA	FRNSW	[1920]	[2021]	[2122]	[2223]	[2324]
					Preparedness	129	Undertake annual maintenance roster / inspection	Private		[1920]	[2021]	[2122]	[2223]	[2324]
	123	Elizabeth Pde, Gordon Cres, Kullah Pde - Lane Cove North	LANE COVE	Human Settlement	Hazard Reduction	123	LMZ - Elizabeth Pde	LGA	FRNSW	[1920]	[2021]	[2122]	[2223]	[2324]
					Community Education	130	Annual letter with key bushfire safety messages.	LGA		[1920]	[2021]	[2122]	[2223]	[2324]

**Annex A to
Bush Fire Coordinating Committee
Policy No. 1/2008**

	124	Myee Cres to Cope St - Lane Cove West	LANE COVE	Human Settlement	Hazard Reduction	122	APZ - Behind Myee Cres	Private	LGA	[1920]	[2021]	[2122]	[2223]	[2324]
					Hazard Reduction	125	LMZ - The Boreen	LGA	FRNSW	[1920]	[2021]	[2122]	[2223]	[2324]
	125	Macquarie University Sports Centre	RYDE	Economic	Hazard Reduction	131	Undertake mechanical and / or prescribed burning	LGA OEH	FRNSW MU	[1920]	[2021]	[2122]	[2223]	[2324]
	126	Brush Park Bowling Club	RYDE	Economic	Community Education	130	Annual letter with key bushfire safety messages.	LGA		[1920]	[2021]	[2122]	[2223]	[2324]
	127	Sugarloaf Point picnic area	RYDE	Economic	Hazard Reduction	121	LMZ - Sugarloaf Point	OEH		[1920]	[2021]	[2122]	[2223]	[2324]
	128	Blackman Park Tennis Club	LANE COVE	Economic	Hazard Reduction	120	LMZ - Manage fuel loads	LGA	FRNSW	[1920]	[2021]	[2122]	[2223]	[2324]
	129	Epping Boys High (School)	RYDE	Human Settlement	Preparedness	129	Undertake annual maintenance roster / inspection	Private		[1920]	[2021]	[2122]	[2223]	[2324]
	130	NSP - St Ignatius College Junior School	LANE COVE	Human Settlement	Preparedness	126	Conduct Annual Inspection	LGA		[1920]	[2021]	[2122]	[2223]	[2324]
	131	NSP - Bayview Park Greenwich	LANE COVE	Human Settlement	Preparedness	126	Conduct Annual Inspection	LGA		[1920]	[2021]	[2122]	[2223]	[2324]
	132	NSP - Woodford Bay Bicentennial Reserve	LANE COVE	Human Settlement	Preparedness	126	Conduct Annual Inspection	LGA		[1920]	[2021]	[2122]	[2223]	[2324]
	133	NSP - Pottery Green Lane Cove	LANE COVE	Human Settlement	Preparedness	126	Conduct Annual Inspection	LGA		[1920]	[2021]	[2122]	[2223]	[2324]
	134	NSP - Kingsford Smith Oval Longueville	LANE COVE	Human Settlement	Preparedness	126	Conduct Annual Inspection	LGA		[1920]	[2021]	[2122]	[2223]	[2324]
	135	NSP - Linley Point Reserve	LANE COVE	Human Settlement	Preparedness	126	Conduct Annual Inspection	LGA		[1920]	[2021]	[2122]	[2223]	[2324]
	136	NSP - Marjorie York Playground	LANE COVE	Human Settlement	Preparedness	126	Conduct Annual Inspection	LGA		[1920]	[2021]	[2122]	[2223]	[2324]
	137	NSP - Carpark Macquarie Shopping Centre	RYDE	Human Settlement	Preparedness	126	Conduct Annual Inspection	LGA		[1920]	[2021]	[2122]	[2223]	[2324]
	138	NSP - Monash Park	RYDE	Human Settlement	Preparedness	126	Conduct Annual Inspection	LGA		[1920]	[2021]	[2122]	[2223]	[2324]
	139	Bundilla Scout Camp	PARRAMATTA	Economic	Hazard Reduction	124	Undertake mechanical and / or prescribed burning	LGA	FRNSW	[1920]	[2021]	[2122]	[2223]	[2324]
	140	John Curtin Community Education Centre	PARRAMATTA	Economic	Hazard Reduction	124	Undertake mechanical and / or prescribed burning	LGA	FRNSW	[1920]	[2021]	[2122]	[2223]	[2324]
	141	Lake Parramatta Kiosk Recreation Area	PARRAMATTA	Economic	Hazard Reduction	124	Undertake mechanical and / or prescribed burning	LGA	FRNSW	[1920]	[2021]	[2122]	[2223]	[2324]

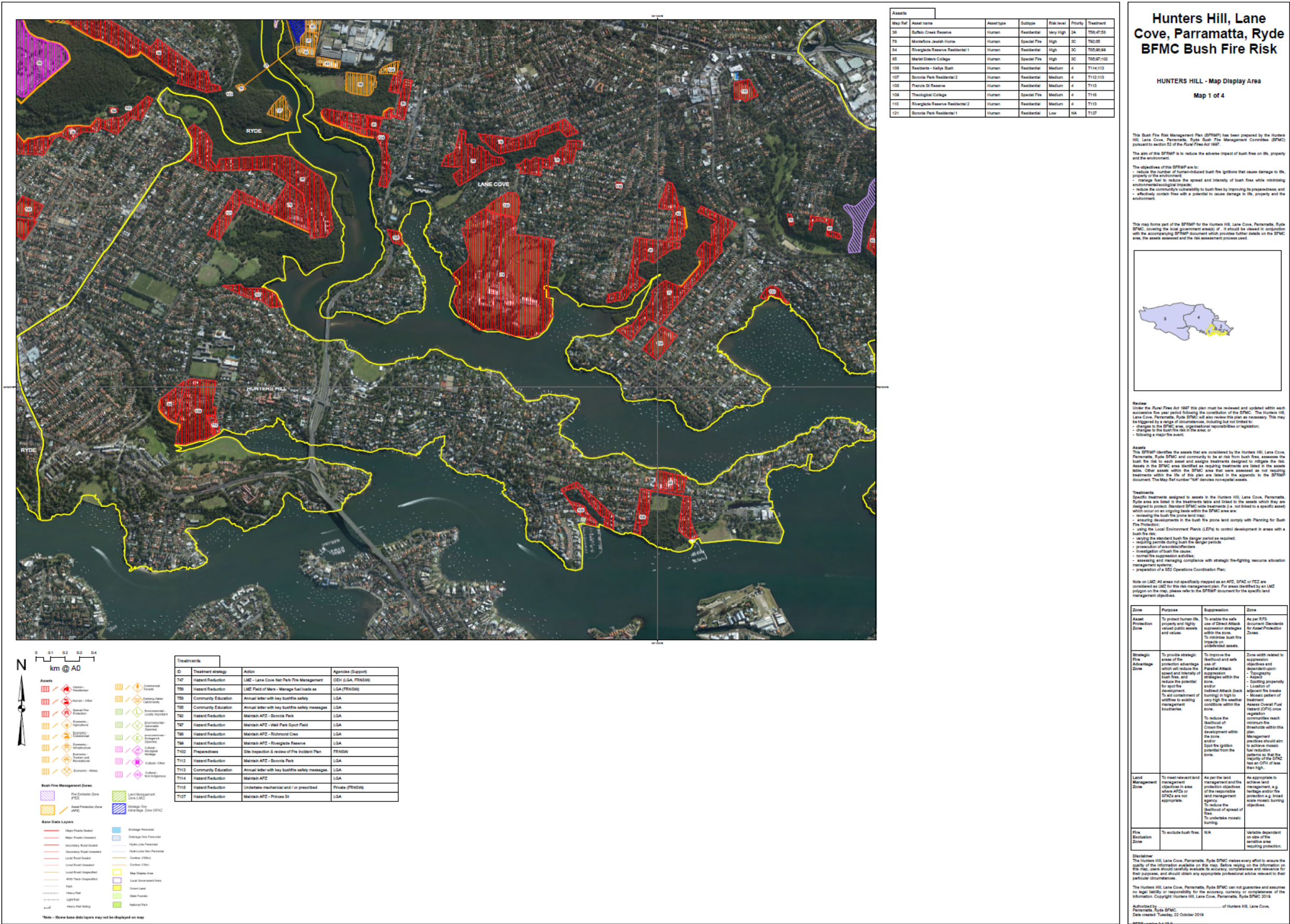
DRAFT

Appendix 4 Map Display Areas

- Hunters Hill
- Lane Cove
- Parramatta
- Ryde

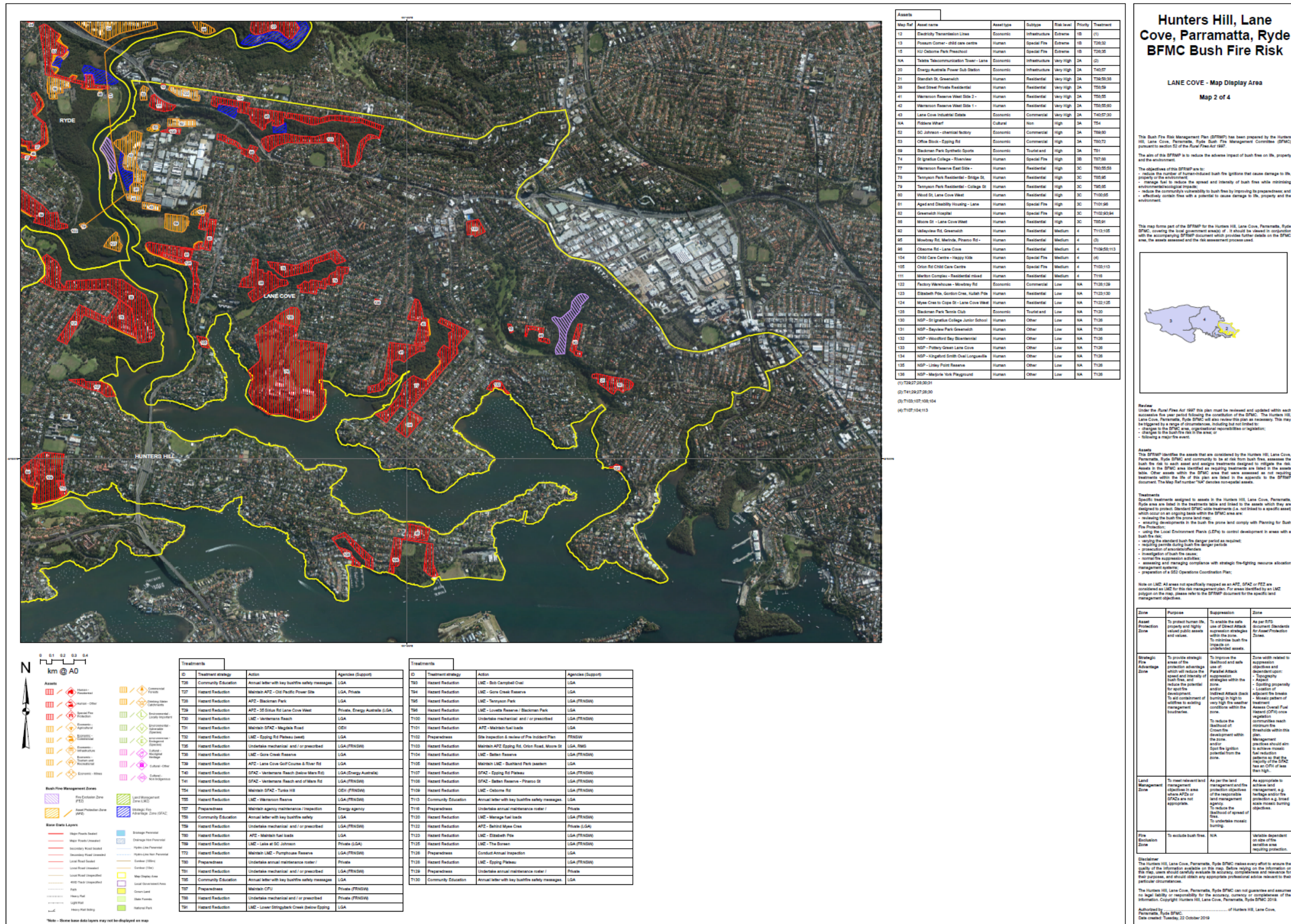
DRAFT

DRAFT

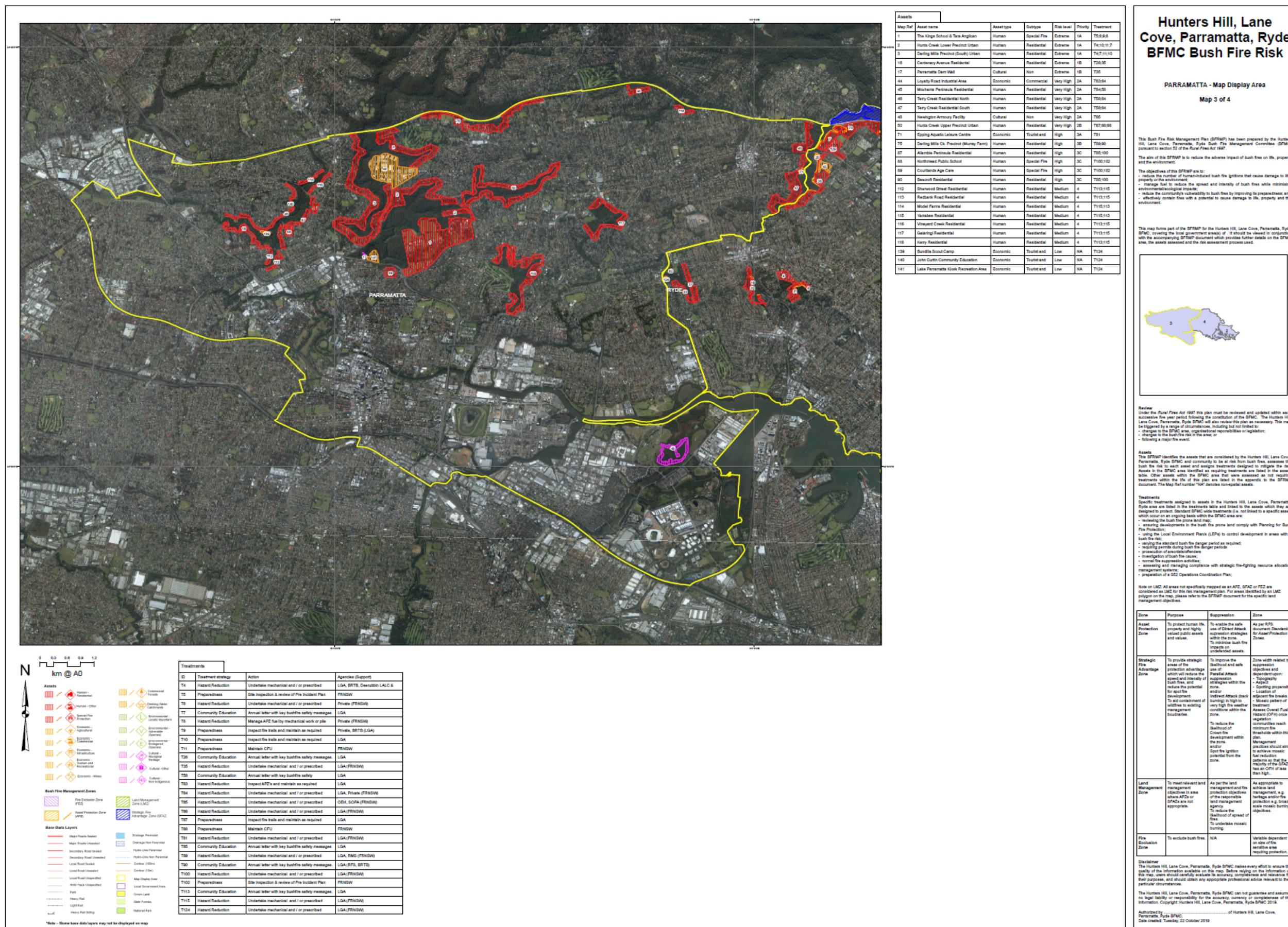


DRAFT

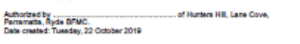
This page is intentionally blank



This page is intentionally blank



This page is intentionally blank



This page is intentionally blank

DRAFT