



Anzac Park

Draft Masterplan Report for Stage 2 Consultation

February 2022



CONTENTS PAGE

1.0 INTRODUCTION

1.1 ANZAC PARK AERIAL	2
1.2 BACKGROUND	3

2.0 CONTEXT

2.1 RYDE CONTEXT	5
2.2 SITE LOCALITY	6
2.3 SURROUNDING GREEN SPACE	7
2.4 SURROUNDING LAND USE	8
2.5 SITE HISTORY	9
2.6 DEMOGRAPHICS	10

3.0 SITE ANALYSIS

3.1 SITE CHARACTER	12
3.2 EXISTING MOVEMENT	13
3.3 EXISTING FACILITIES	14
3.4 EXISTING ENVIRONMENT	15
3.5 EXISTING HERITAGE AND SIGNIFICANT FEATURES	16
3.6 OPPORTUNITIES & CONSTRAINTS	17

4.0 DESIGN STRATEGY

4.1 VISIONS & PRINCIPLES	19
4.2 DESIGN APPROACH	20
4.3 PROPOSED ARRANGEMENT	21
4.4 PROPOSED MOVEMENT	22
4.5 PROPOSED SPATIAL ARRANGEMENT	23
4.6 PROPOSED PLANTING	24

5.0 MASTERPLAN

5.1 OVERALL PLAN	26
5.2 DETAILED PLAN 01	27
5.3 DETAILED PLAN 02	28
5.4 SECTIONS 01	29
5.5 SECTIONS 02	30
5.6 SECTIONS 03	31
5.7 PRECEDENT IMAGES 01	32
5.8 PRECEDENT IMAGES 02	33
5.9 PRECEDENT IMAGES 03	34
5.10 PERSPECTIVE 01	35
5.11 PERSPECTIVE 02	36
5.12 PERSPECTIVE 03	37
5.13 PERSPECTIVE 04	38
5.14 PERSPECTIVE 05	39
5.15 PERSPECTIVE 06	40
5.12 PLANTING PALETTE	41
5.13 CIRCULATION	42
5.14 LIGHTING	43
5.15 STAGING	44
5.16 REFERENCES	45

REVISION TABLE

REVISION	DATE	STATUS
1	09/12/2021	Initial draft for review
2	25/01/2022	Draft for Stage 2 Community Consultation
3	02/02/2022	Draft for Stage 2 Community Consultation
4	10/02/2022	Draft for Stage 2 Community Consultation



1.0 INTRODUCTION



Anzac Park is located in West Ryde to the east of West Ryde Train Station and town centre. Anzac Park (the Park) is approximately 150m from West Ryde Station and 50m from the town centre making it within close proximity to infrastructure and services. Anzac Park is bounded on all four sides by streets including Ryedale Lane to the west, Wattle Street to the north, Anzac Avenue to the east and Herbert Street to the south.

Anzac Park measures approximately 1.22 hectares with topography falling gently from the west to east as the lowest point. The Park is predominantly characterised by the diagonal pathway axis that splits the Park into four quadrants. The Park is also characterised by the strong avenues of deciduous trees along the main axis pathways, around the north perimeter as well as the dense tree clusters to the north east corner.

The Park features the children’s playground constructed in 2020 to the north east, ANZAC commemorative plaques and flag poles in the centre and open recreation picnic space to the west, south and east. A small amenities building was constructed in 1986/1987 and is located to the north east underneath the dense tree canopies. The Park is known for hosting a number of community events such as the ANZAC Day Ceremony and West Ryde Garden Bar.

In the interest of the community and growing West Ryde population, City of Ryde Council has developed a Masterplan for Anzac Park that will incorporate passive and active recreation.

The Masterplan aims to provide the framework for how the Park will be upgraded over the next 20 years. This strategic plan aims to meet the current and future recreational needs of the community and user groups, while ensuring sustainable and efficient use and ecological outcomes. This Masterplan incorporates the site’s surrounding context, while maximising the Park’s potential for the broader community.

The goals of this Masterplan are to:

- Improve connectivity to the surrounding West Ryde context and town centre
- Improve existing active and passive recreation uses
- Introduce new and exciting active and passive recreation uses including multi-purpose facilities
- Make Anzac Park a hub for community events and recreation within West Ryde
- Identify improvement projects so the Park best services the future needs of the community
- Demonstrate effective future provision, conservation, planning and development of facilities
- Guide Council over the next 20 years on how the park will be upgraded
- Identify stages for implementation which may be suitable for future external grant funting opporunities

Relating Strategic Council Documents

There are a number of strategic documents that provide context in regard to Anzac Park. These documents include:

Draft West Ryde Town Centre Revitalisation Strategy (2019)
Anzac Park is identified as part of the West Ryde Town Centre Area within the *Draft West Ryde Town Centre Revitalisation Strategy*. The Park is also identified as a significant recreational space and of heritage value. In respect to connectivity, the strategy describes Anzac Park as a space that contributes to the walkability of the town centre due to the direct pathway networks running through the centre. These pathway networks are highly utilised by pedestrians travelling to and from the town centre and particularly West Ryde Station.

Draft Green Links Masterplan (2021)
Anzac Park sits within the Meadowbank/ West Ryde Precinct as part of the *Draft Green Links Masterplan*. This precinct provides connection between the Parramatta River and Blaxland Road for pedestrians and cyclists. Within the Meadowbank/ West Ryde Precinct the Green Link Shared User Path is proposed along Wattle Street adjacent Anzac Park, running between Hermitage and Ryedale Roads. This Shared User Path will ultimately provide Anzac Park with increased connectivity across the wider City of Ryde local government area.

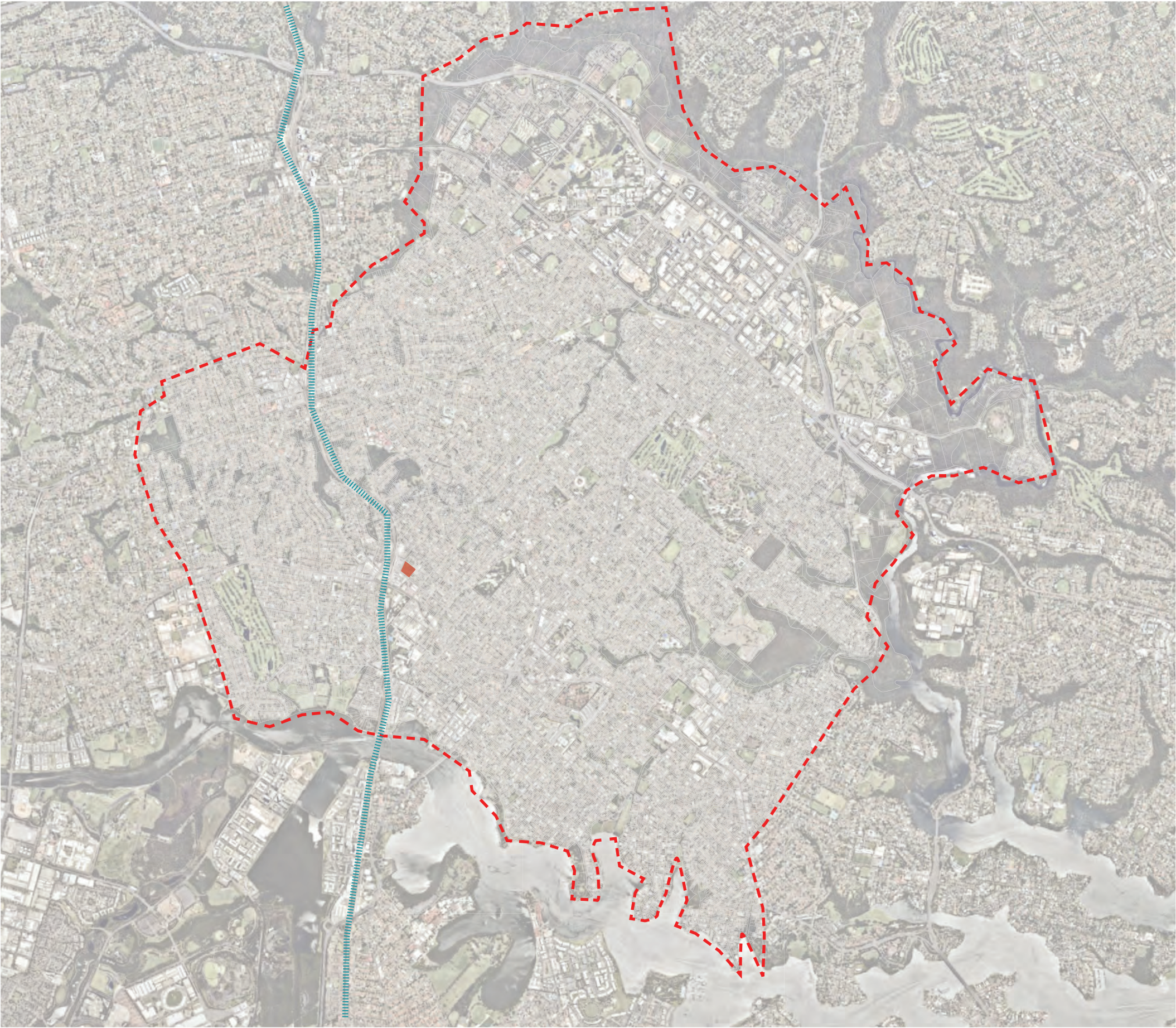
Integrated Open Space Plan (2012)
Anzac Park is identified within the *Integrated Open Space Plan* as a Level 3 Open Space within the open space hierarchy between Levels 1 and 4. Level 3 typically represents the 2nd smallest open spaces within City of Ryde, with Level 4 representing the smallest open space areas. Anzac Park as Level 3 attracts a greater level of use, encourage longer stays and contribute to the identity and character of the local area. These spaces also provide convenient access to pas-sive and active recreational opportunities for local residents of all age groups.

Children’s Play Implementation Plan (2019)
The 2019 *Children’s Play Implementation Plan* identifies Anzac Park as 1 of 16 parks with play-grounds to be upgraded. In 2020 the playground in Anzac Park was entirely replaced with a new district level playground including custom designed timber play structure, water play and toddler play zone.








2.0 CONTEXT








LEGEND

-  CITY OF RYDE LOCAL GOVERNMENT AREA (LGA) BOUNDARY
-  ANZAC PARK LOCATION
-  TRAIN LINE



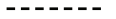





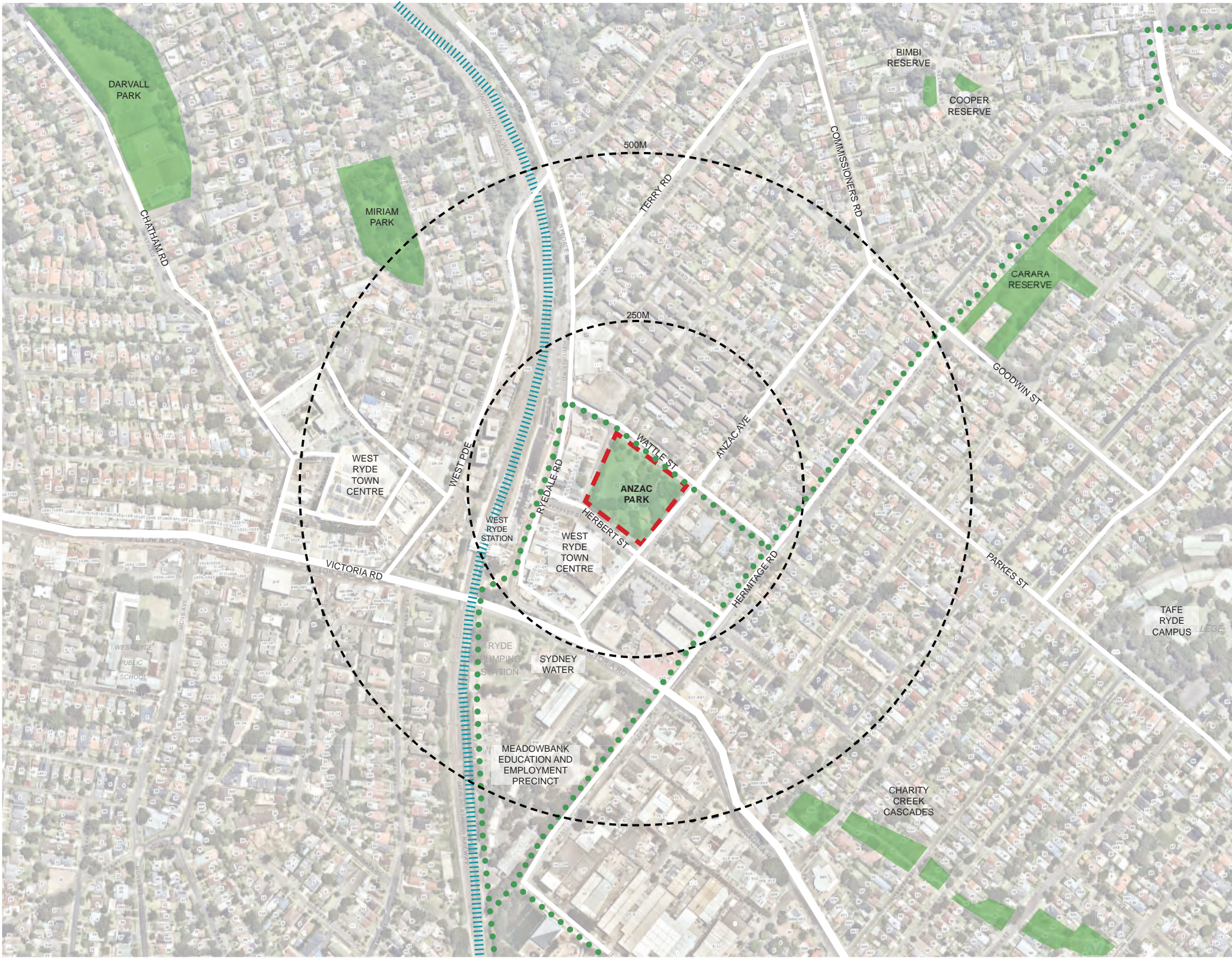
LEGEND

-  ANZAC PARK BOUNDARY
-  CONTEXT RADIUS
-  MAJOR ROAD CORRIDOR
-  TRAIN LINE
-  FUTURE ACTIVE TRANSPORT ROUTE (REFER GREEN LINKS MASTERPLAN)

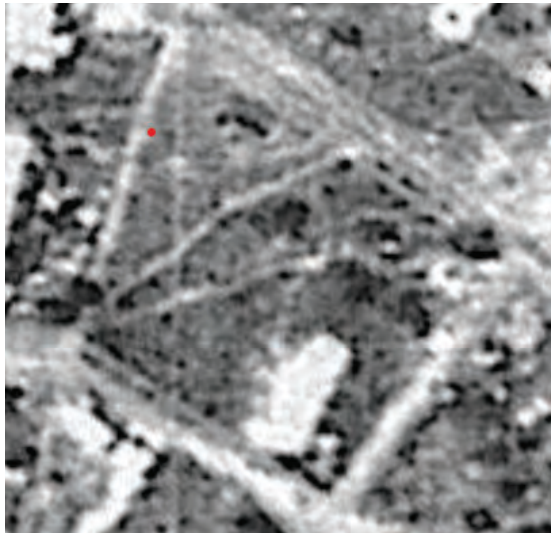


LEGEND

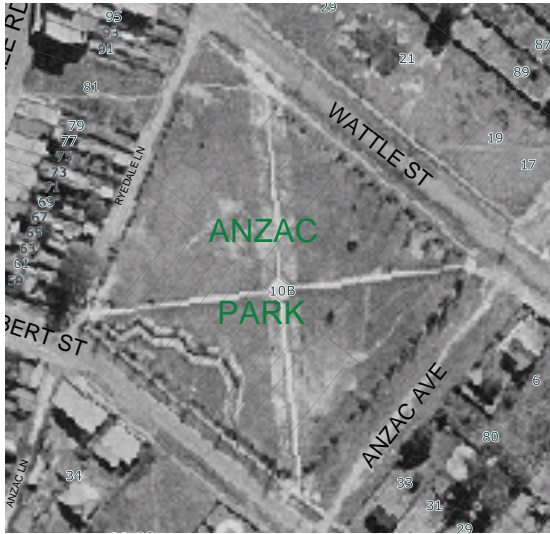
-  ANZAC PARK BOUNDARY
-  SURROUNDING PARKS & RESERVES
-  CONTEXT RADIUS
-  MAJOR ROAD CORRIDOR
-  TRAIN LINE
-  FUTURE ACTIVE TRANSPORT ROUTE (REFER GREEN LINKS MASTERPLAN)







1930 Aerial Photograph¹¹



1943 Aerial Photograph¹¹



1956 Aerial Photograph¹¹



1965 Aerial Photograph¹¹



1978 Aerial Photograph¹¹



1982 Aerial Photograph¹¹



1995 Aerial Photograph¹¹



2006 Aerial Photograph¹¹



2010 Aerial Photograph¹¹

ANZAC PARK HISTORICAL TIMELINE

1919 - First suggestion that a park was needed in West Ryde by Councillors.¹

1926 - Alternative uses for the current site were suggested including bitumen concrete plant.²

1935 - The Parks and Lighting Committee inspected the land in Wattle Street, Herbert Street and Anzac Avenue in February.³

1936 - The Parks & Lighting Committee recommended that the offer to acquire land be approved.⁸ Council needed to forward £1077 to acquire all land with frontage to Herbert, Wattle and Anzac Streets.⁸

1937 – Wattle Street Park becomes Anzac Park. At the meeting of the Parks Committee on 13 March 1937 there were reports presented on a number of parks including the 'Wattle Street Park', later decided 'Anzac Park'.⁹ The committee recommended the following works; fencing, planting of Oleaner and Poplar trees, levelling and grassing and pavilion shelter.¹⁰

1938-1943 - Works were undertaken including tree planting and the prominent diagonal pathways. By 1943 slit trenches were constructed along Herbert St due to the fear of air raid attacks during World War II.¹¹

1956-1961 - Turf netball courts were constructed in north west portion of Anzac Park.¹¹

1965 - Netball Courts were removed.¹¹

1971 - Plans for beautification were prepared including new planting and toilet block adjacent the corner of Herbert and Ryedale Lane (no toilet block was completed).¹¹

1978 - New plans were prepared including car barriers, shrub and tree planting, adventure playground and junior playground as well as entry pergola at the Wattle Street and Anzac Avenue entry.¹¹

1980 - Additional planting, playground, entry pergola and lighting completed.¹¹

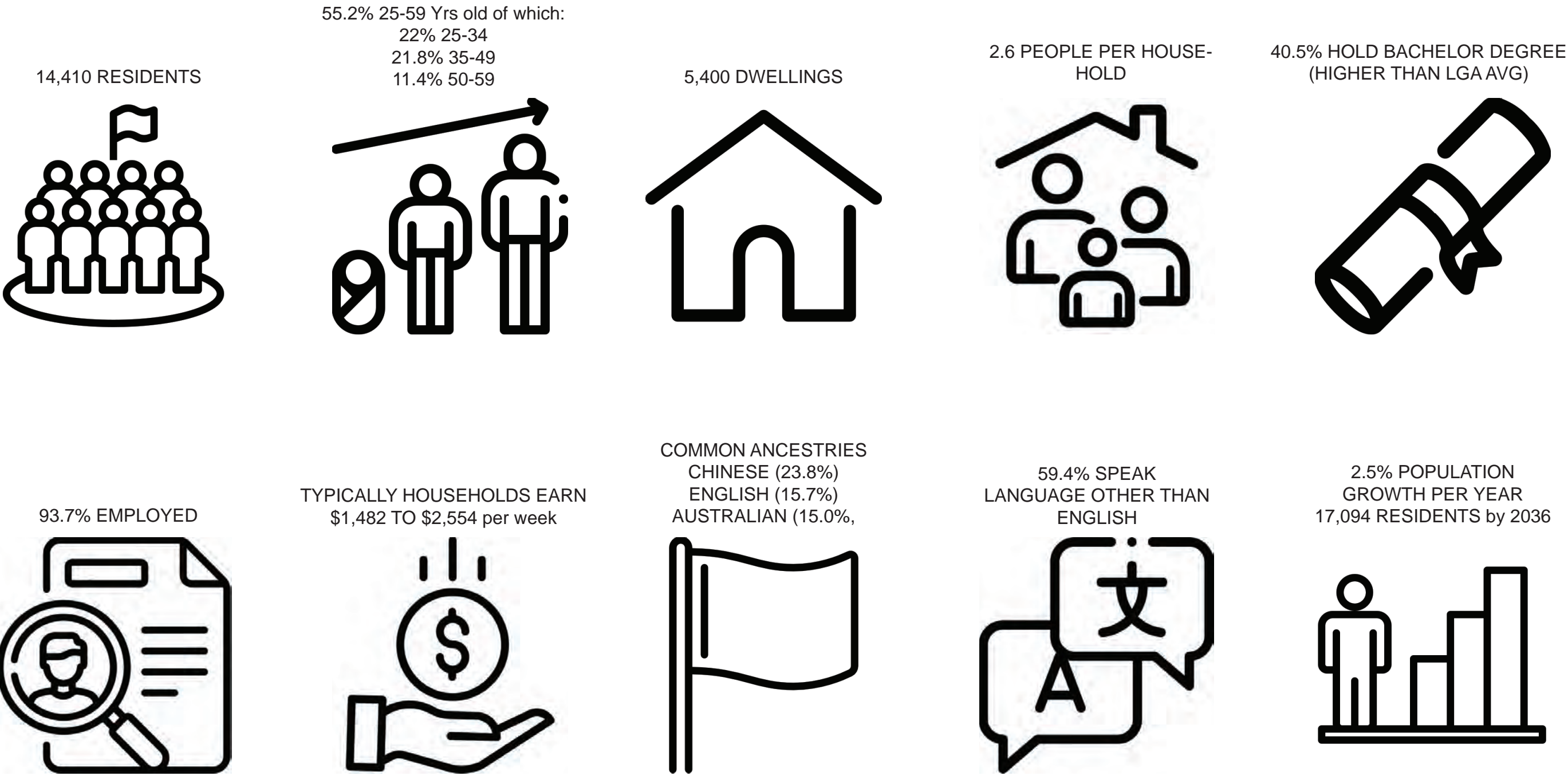
1986-1987 - Current toilet block constructed.¹¹

2003 - Upgrade works were undertaken including additional pathways, BBQs, formalised garden beds with planting, playground relocation to adjacent Anzac Avenue and new park furniture.¹¹

2018 - In respect to Centenary of ANZAC Day (2018), commemorative plaques were installed in the central garden bed.¹¹

2021/2022 - Anzac Park Masterplan prepared.

WEST RYDE DEMOGRAPHICS



(Australian Bureau of Statistics, 2016)¹²



3.0 SITE ANALYSIS

SITE CHARACTER



ANZAC MEMORIAL



DECIDUOUS TREES
FORMAL PLANTING



OPEN SPACE



DISTRICT LEVEL PLAY-
GROUND & DENSE TREE
CANOPIES



STRUCTURED
PATHWAYS



LEGEND

- SITE BOUNDARY
- MAJOR PEDESTRIAN MOVEMENT
- MINOR PEDESTRIAN MOVEMENT
- ↔ LEVEL (ACCESSIBLE) ENTRY/ EXIT POINTS
- ↔ ENTRY AT GRADE
- ↔ MOVEMENT ACROSS PATHWAY
- //// PEDESTRIAN CROSSINGS
- PEDESTRIAN ISLAND REFUGE
- B BUS STOP
- P CAR PARKING



LEGEND

- SITE BOUNDARY
- ↔ FORMAL ENTRY/ EXIT POINTS
- STRUCTURED RECREATION
- OPEN RECREATION
- AMENITIES
- ANZAC MEMORIAL



LEGEND

- SITE BOUNDARY
- SOLAR MOVEMENT
- WIND MOVEMENT
- VEGETATION
- 1:100 FLOODING
- SLOPING TOPOGRAPHY



LEGEND

— SITE BOUNDARY

ELEMENTS OF SITE SIGNIFICANCE

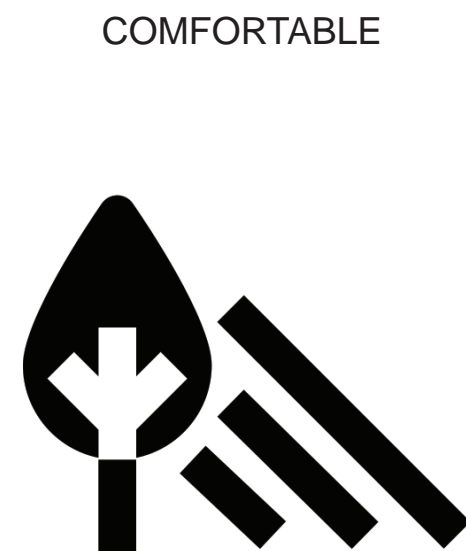
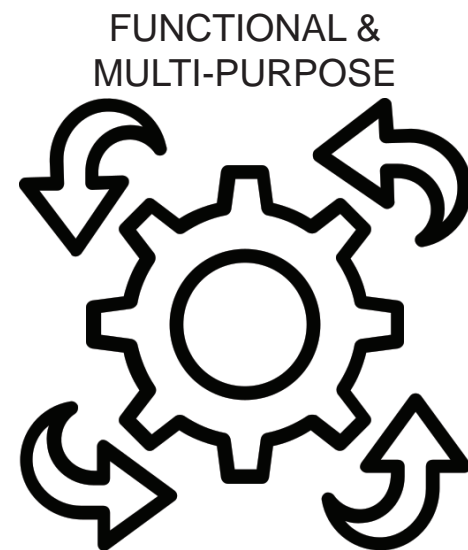
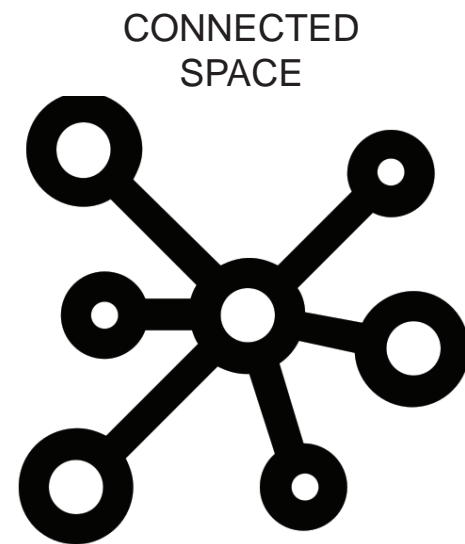
ELEMENTS OF HERITAGE AND CULTURAL SIGNIFICANCE

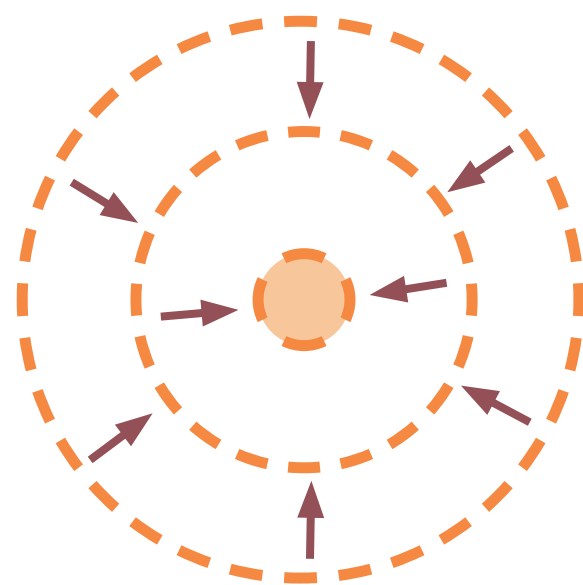


- LEGEND**
- SITE BOUNDARY
 - ↔ INCREASED INTERNAL PARK CONNECTIVITY
 - ↔ INCREASE EXTERNAL PARK CONNECTIVITY
 - ✱ INCREASE ACTIVATION
 - OPPORTUNITY TO WORK WITH TOPOGRAPHY/ SLOPE
 - VIEW VANTAGE POINT
 - INCREASE PLANTING/ TREE CANOPY
 - EXTENSION TO PLAYGROUND
 - FORMALISED COMMUNITY EVENT SPACE
 - ~ POOR VISIBILITY INTO PARK
 - ◊ SHARED ZONE (REAR ACCESS RETAINED)
 - ... FUTURE ACTIVE TRANSPORT ROUTE (REFER GREEN LINKS MASTERPLAN)

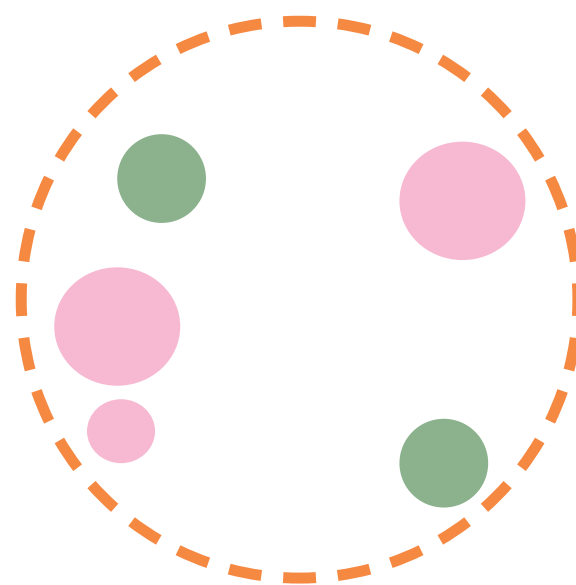


4.0 DESIGN STRATEGY

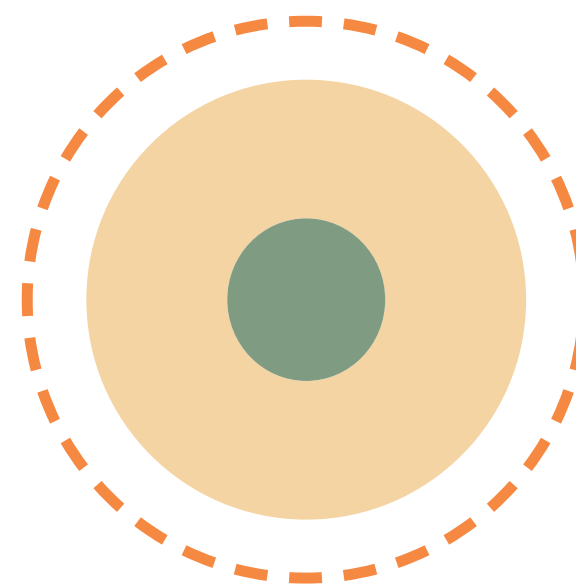




ACTIVATION OF
PARK CORE



DESIGNATED ACTIVE
& PASSIVE RECREATIONAL
ZONES



TOWNCENTRE PARK
AS 'URBAN OASIS'
AND REFUGE



LEGEND

- SITE BOUNDARY
- PARK ENTRY/ EXIT POINTS
- PLAY ZONE
- SHELTER/ BBQ
- ACTIVE RECREATION
- COMMUNITY EVENTS ZONE
- LANE WY ACTIVATION / SHARED ZONE
- ANZAC MEMORIAL
- AMPHITHEATRE
- REFLECTION SPACE/ HISTORIC INTERPRETATION
- PICNIC SPACE
- ACTIVE RECREATION/ EVENTS
- SENIOR ACTIVITIES
- FITNESS ZONE
- PASSIVE REFLECTION
- PROPOSED AMENITIES BUILDING



LEGEND

- SITE BOUNDARY
- ↔ PARK ENTRY EXIT
- MAJOR PEDESTRIAN MOVEMENT
- MINOR PEDESTRIAN MOVEMENT
- ↔ MOVEMENT ACROSS PATHWAY
- /// PEDESTRIAN CROSSING
- PEDESTRIAN REFUGE ISLAND
- B BUS STOP
- P CAR PARKING



LEGEND

- SITE BOUNDARY
- ↔ PARK ENTRY EXIT
- MAJOR PEDESTRIAN MOVEMENT (OUTSIDE PARK)
- MAJOR PEDESTRIAN MOVEMENT (WITHIN PARK)
- MINOR PEDESTRIAN MOVEMENT
- //// PEDESTRIAN CROSSING
- PEDESTRIAN REFUGE ISLAND
- B BUS STOP
- P CAR PARKING



LEGEND

SITE BOUNDARY

Existing
Platanus acerifolia

Existing
Fraxinus raywoodii

Existing
Celtis australis

Existing
Lophostemon confertus

Existing
Jacaranda mimosifolia

Proposed
Fraxinus raywoodii

Proposed
Platanus acerifolia

Proposed
WSUD Swale



5.0 MASTERPLAN



- ### LEGEND
- 1. Existing ANZAC memorial with plaques to be updated
 - 2. Widened circular path with bench seating and memorial planting
 - 3. Flexible open space for recreation/ events, including rigging and power for temporary event staging
 - 4. Flag Poles
 - 5. Terraced seating/ amphitheatre with shade trees and turf overlooking open green and community event space
 - 6. Open green for recreation, community events and group picnics
 - 7. Ryedale Lane shared zone with contemporary paving pattern and removable bollards for community events, rear access to properties retained
 - 8. Ryedale Lane plaza space adjoining shared zone with provision for food trucks
 - 9. Seniors exercise and dexterity equipment with shade structure
 - 10. BBQ and picnic shelters with accessible picnic settings
 - 11. Provision for future potential expansion of playground with junior and intermediate play opportunities
 - 12. Existing playground
 - 13. New amenities building with accessible facilities
 - 14. Active recreation area including table tennis tables
 - 15. Fitness equipment zone
 - 16. Picnic and reflection area for smaller groups
 - 17. Fixed seating, tables for reflection and quiet study, with historic interpretation for past WWII trenches and air raid shelter
 - 18. Expansion of avenue tree planting to formalise park structure plus provide greenery and shade
 - 19. Existing tree avenue with improved pathway connections and path lighting
 - 20. Shared User Path
 - 21. On-Street parking with accessible parking spaces



REMOVABLE BOLLARDS TO
EXPAND SPACE FOR LARGE
COMMUNITY EVENTS

RYEDALE LANE SHARED ZONE
WITH FEATURE CONTEMPORARY
PAVING (REAR ACCESS TO
PROPERTIES RETAINED)

OPEN GREEN FOR RECREATION,
COMMUNITY EVENTS AND GROUP
PICNICS

OVERHEAD CATENARY LIGHTING
FOR NIGHT COMMUNITY EVENTS

PLAZA SPACE AS CONTINUATION
OF SHARED ZONE FOR
COMMUNITY EVENTS

PROVISION FOR FOOD TRUCK
PARKING WITHIN PLAZA SPACE

TREES TO PROVIDE SHADE AND
GREENERY ACROSS PLAZA SPACE

TERRACED SEATING/
AMPHITHEATRE WITH SHADE
TREES AND TURF OVERLOOKING
OPEN GREEN AND COMMUNITY
EVENT SPACE

DIRECT STAIR
ACCESS TO OPEN GREEN

EXISTING TREE AVENUE
RETAINING INCLUDING MORE
PATHWAY CONNECTIONS

SHARED USER PATH
TO WEST RYDE STATION

DESIGNATED SENIORS
EXERCISE AND DEXTERITY
TRAINING EQUIPMENT WITH
SHADE STRUCTURE

CENTRAL BBQ AREA WITH
ACCESSIBLE PICNIC SETTINGS
AND SHELTERS OVERLOOKING
PLAYGROUND AND PICNIC AREA

AVENUE TREE PLANTING
AS CONTINUATION OF EXISTING
TO INCREASE CANOPY
COVERAGE WITH PATH
LIGHTING

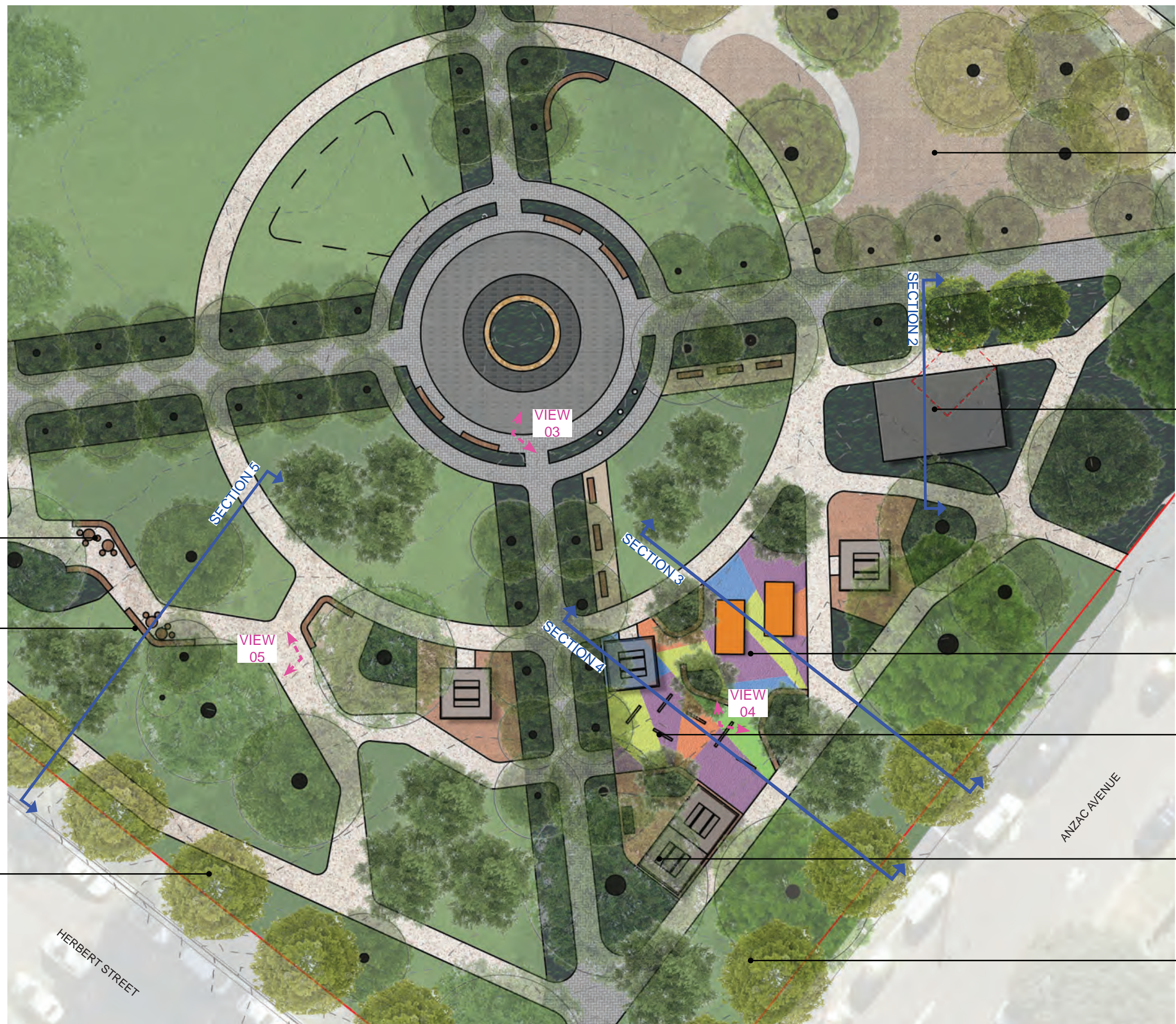
PROVISION FOR FUTURE
POTENTIAL EXPANSION OF
EXISTING PLAYGROUND WITH
JUNIOR AND INTERMEDIATE
PLAY OPPORTUNITIES

FLEXIBLE OPEN SPACE FOR
RECREATION/ EVENTS, INCLUDES
RIGGING POINTS AND POWER
FOR TEMPORARY STAGING

WIDENED CENTRAL PATH AND
BENCH SEATING TO INCREASE
PASSIVE ACTIVATION

EXISTING ANZAC MEMORIAL WITH
PLAQUES TO BE UPDATED

LOCATION OF FLAG
POLES



EXISTING
PLAYGROUND

NEW AMENITIES BUILDING
WITH ACCESSIBLE FACILITIES

ACTIVE RECREATION
AREA INCLUDING TABLE
TENNIS TABLES

DESIGNATED FITNESS ZONE
WITH FIXED EQUIPMENT
CIRCUIT

SHELTER WITH ACCESSIBLE
PICNIC TABLES

AVENUE TREE PLANTING TO
INCREASE CANOPY COVERAGE
AND PARK STRUCTURE

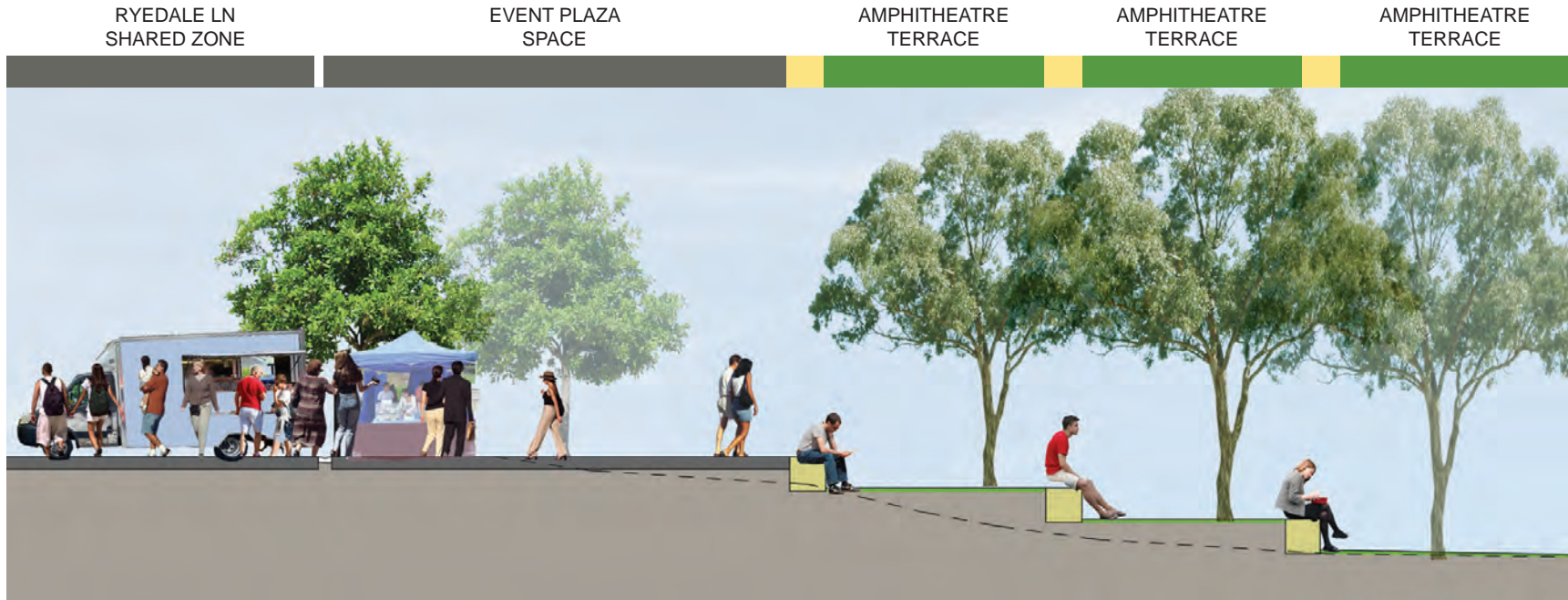
FIXED TABLES AND SEATING
FOR QUIET REFLECTION AND
STUDY

REFLECTION SPACE WITH
HISTORIC INTERPRETATION OF
WWII AIR RAID SLIT TRENCHES
FORMALLY IN THIS LOCATION

AVENUE TREE PLANTING TO
INCREASE CANOPY COVERAGE
AND PARK STRUCTURE



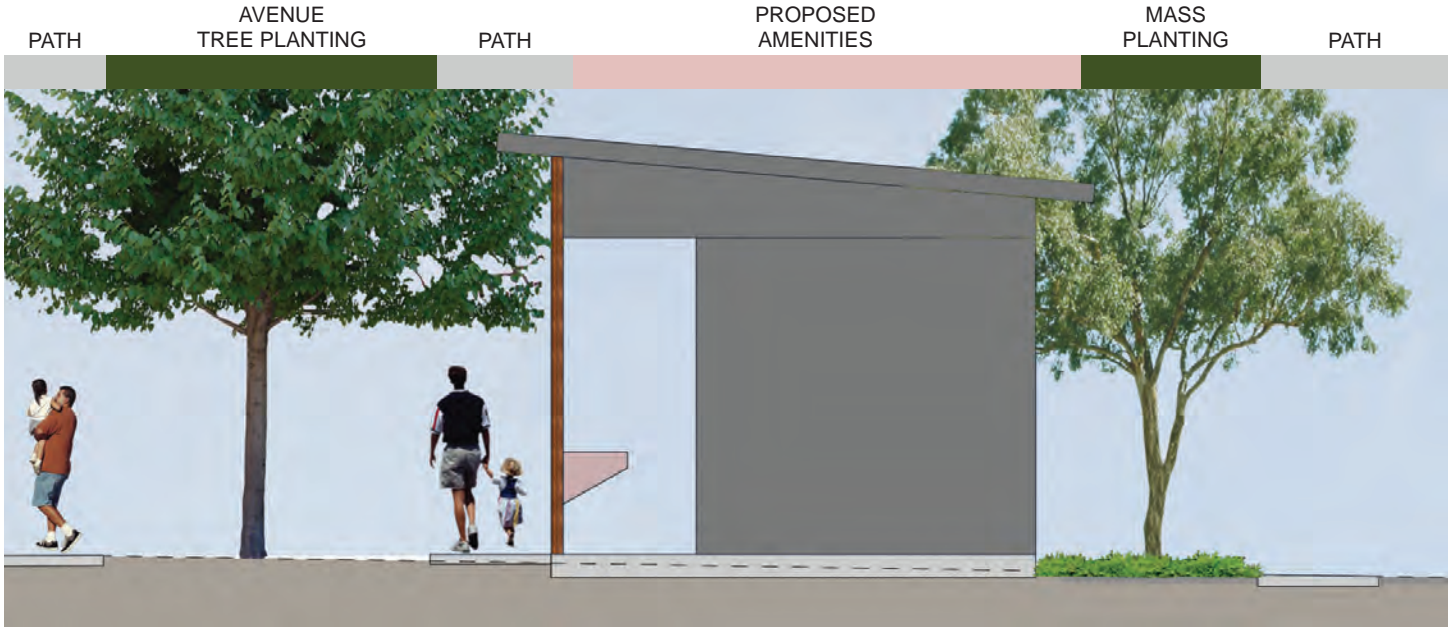
SECTION 01
SCALE 1:200 @A3



SECTION 01-A
SCALE 1:100 @A3



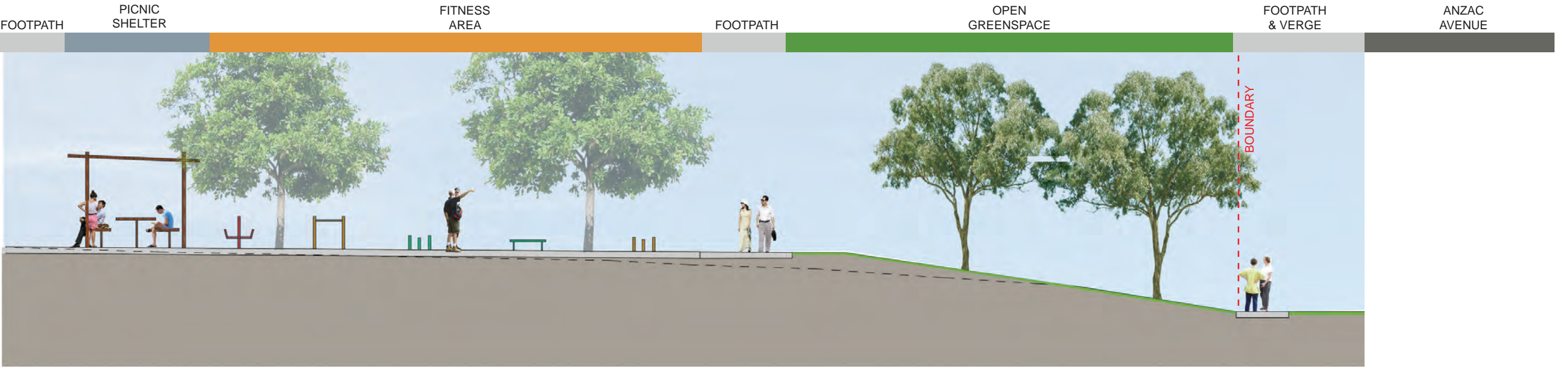
SECTION 01-B
SCALE 1:100 @A3



SECTION 02
SCALE 1:100 @A3



SECTION 03
SCALE 1:100 @A3



SECTION 04
SCALE 1:100 @A3



SECTION 05
SCALE 1:100 @A3

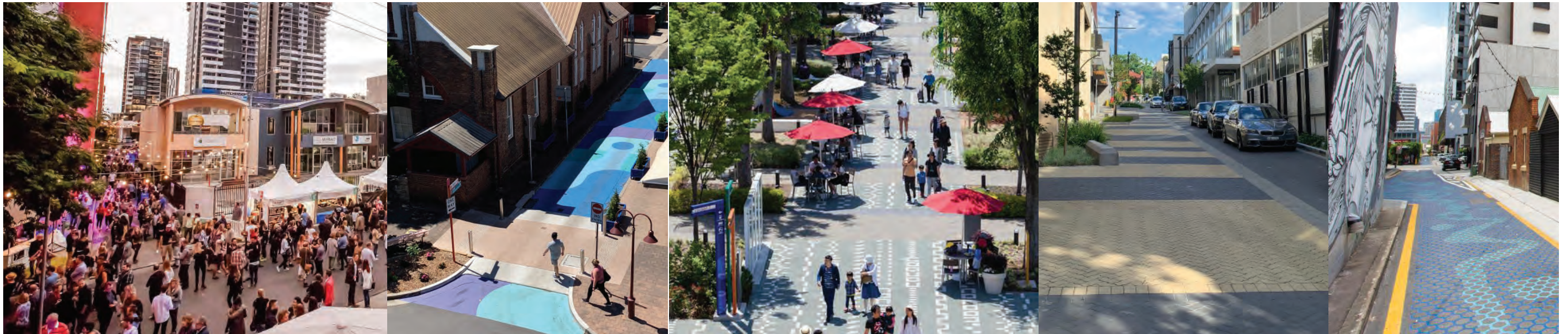
PICNIC AND EVENT SPACE



AMPHITHEATRE & TEMPORARY STAGE



SHARED ZONE & PLAZA SPACE



AMENITIES BUILDING



GAMES AND FITNESS AREA



SENIORS EXERCISE EQUIPMENT



REFLECTION & STUDY SPACE















TREES



Fraxinus raywoodii (Claret Ash) *Lophostemon confertus* (Brush Box) *Brachychiton populneus* (Qld Bottle Tree) *Platanus acerifolius* (London Plane Tree) *Eucalyptus fibrosa* (Red Ironbark) *Eucalyptus haemastoma* (Scribbly Gum) *Eucalyptus tereticornis* (Forest Red Gum)

SHRUBS



Buxus microphylla japonica (Japanese Box) *Rosmarinus officinalis* (Rosemary) *Nandina domestica* 'Gulf Stream' (Nandina) *Callistemon viminalis* 'Better John' (Dwarf Callistemon)

GRASSES & GROUNDCOVERS












Liriope muscari 'Just Right' (Giant Liriope) *Trachelospermum jasminoides* (Stair Jasmine) *Myoporum parvifolium* (Creeping Boobialla)

WSUD STORMWATER
DETENTION



Ficinia nodosa (Knobby Club Rush) *Imperata cylindrica* (Cogon Grass) *Carex appressa* (Club Rush)



- LEGEND**
-  PARK ENTRY EXIT
 -  MAJOR PEDESTRIAN MOVEMENT
 -  MINOR PEDESTRIAN MOVEMENT
 -  FUTURE ACTIVE TRANSPORT ROUTE (REFER GREENLINKS MASTERPLAN)
 -  PEDESTRIAN CROSSING
 -  PEDESTRIAN REFUGE
 -  BUS STOP
 -  CAR PARKING
 -  ACCESSIBLE PARKING



LEGEND

- MAJOR PATHWAY POST TOP LIGHTING
 - MINOR PATHWAY POST TOP LIGHTING
 - AMPHITHEATRE POST LIGHTING
 - FLAG POLE UP LIGHTING
 - CATENARY OVERHEAD LIGHTING
 - STRIP LIGHTING IN AMPHITHEATRE WALLS
 - SHELTER AND AMENITIES LIGHTING
 - 'FAIRY' LIGHTING UP TREE TRUNKS
- (LOCATIONS SHOWN ARE CONCEPTUAL ONLY)



STAGING

Stage 1

- Demolition of existing amenities building
- New amenities building
- Shelters & BBQ
- Circulation pathways and lighting
- Fitness circuit
- Table tennis tables
- Furniture and fixtures
- Tree planting

Stage 2

- Main circulation pathways and lighting
- Widened central pathway
- Recreation/ temporary stage area
- Tree planting
- Upgrade flag poles
- ANZAC Memorial and plaques to upgraded

Stage 3

- Ryedale Lane shared zone and lighting
- Plaza space
- Amphitheatre
- Tree planting
- Circulation pathways

Stage 4

- Playground extension
- BBQ and Picnic Shelters and lighting
- Senior exercise and dexterity equipment

Stage 5

- Passive recreational zone
- Seating and study zone
- Historical interpretation zone
- Circulation pathways and lighting
- Tree planting
- Picnic shelter

Stage 6

- Green Links Shared User Path (Green Links Masterplan)

References

¹Minutes of Ordinary meeting 5 December 1919
²M C I Levy, Wallumetta: a history of Ryde and its districts. 1792 to 1945, p.246
³Parks & Lighting Committee Report 2 February 1935
⁴Parks & Lighting Committee Report 30 March 1935
⁵Parks & Lighting Committee Report 1 June 1935
⁶Parks & Lighting Committee Report 1 June 1935
⁷Parks & Lighting Committee Report 6 November 1935
⁸Parks & Lighting Committee Report 16 May 1936
⁹Parks Committee Report 13 March 1937
¹⁰Parks Committee Report 13 March 1937
¹¹Anzac Park West Ryde Background and History, A. Phippen, 2021

