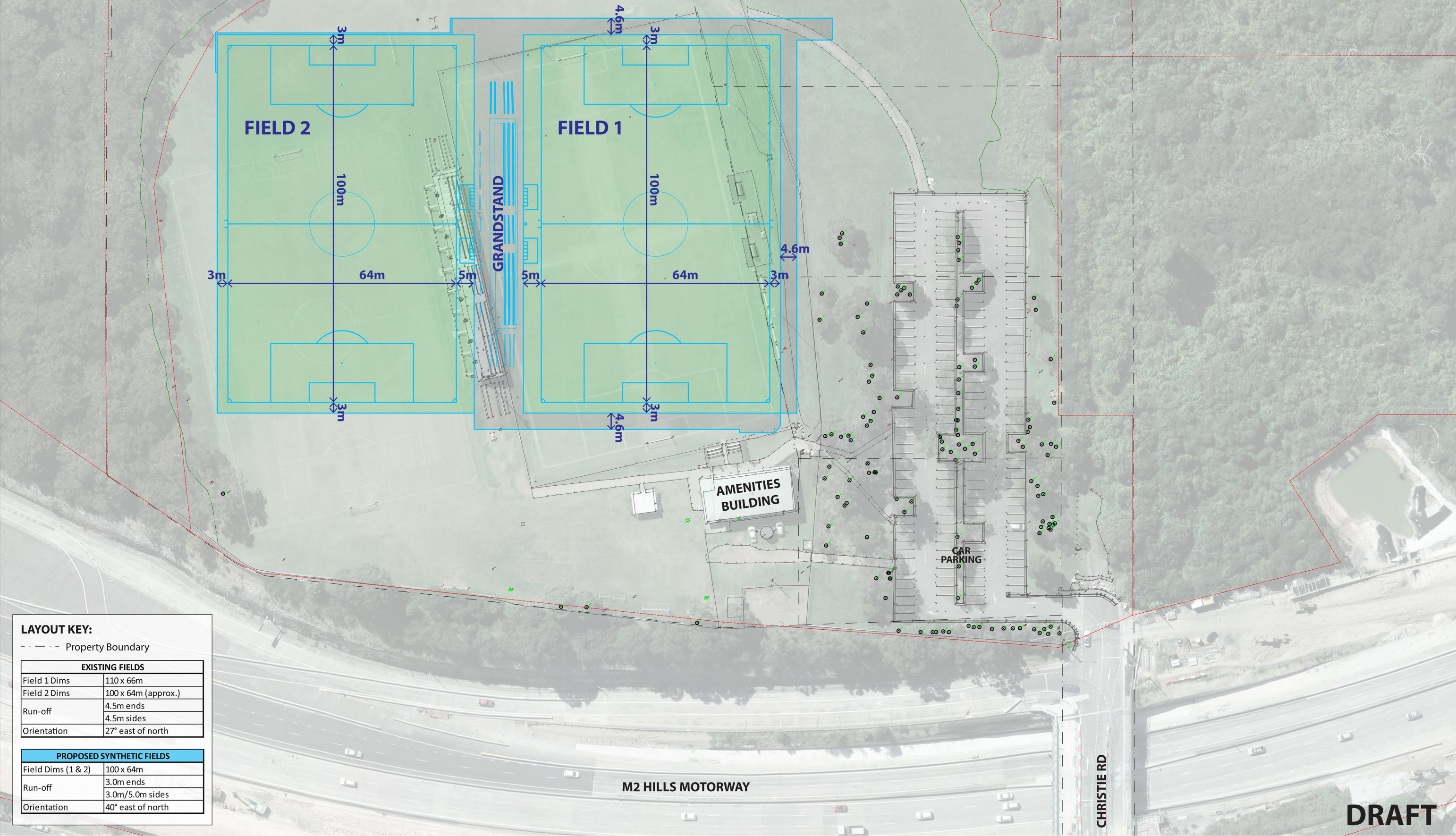


LANE COVE
NATIONAL PARK

LANE COVE
NATIONAL PARK



LAYOUT KEY:

- - - - - Property Boundary

EXISTING FIELDS	
Field 1 Dims	110 x 66m
Field 2 Dims	100 x 64m (approx.)
Run-off	4.5m ends
	4.5m sides
Orientation	27° east of north

PROPOSED SYNTHETIC FIELDS	
Field Dims (1 & 2)	100 x 64m
Run-off	3.0m ends
	3.0m/5.0m sides
Orientation	40° east of north

