



Gannan & McCauley Parks

DRAFT MASTERPLAN REPORT

Stage 3 Community Consultation 25 March - 17 April 2019

City of Ryde

Locked Bay 2069
NORTH RYDE NSW 1670
Phone: (02) 9952 8222
Email: cityofryde@ryde.nsw.gov.au
Web: www.ryde.nsw.gov.au

 City of Ryde

BACKGROUND

Gannan and McCauley Park's are located in Ryde, and are 4.51 hectares in combined size. The site is a former quarry, with steep embankments on two sides and residential properties on all boundaries. The playing field is currently used for cricket in summer and baseball in winter.

A masterplan is required to ensure Gannan Park and McCauley Park meet the growing needs of the community and sporting groups for the next 15 years.



TALKING TO THE COMMUNITY

Community consultation has taken place to find out what people like about the parks, what they don't like, and what they think could be improved.

Flagship Communications undertook consultation in late 2017 and May 2018. During the first round of consultation, Council listened to the community and during the second round, a draft masterplan was presented for feedback. People gave their feedback via online surveys, interviews and drop-in sessions.

The Gannan and McCauley Park masterplan addresses the following themes as raised through the consultation:

Getting to the site

- Improves pedestrian connections to the site
- Incorporates new park entrance signage

Thoughts on site

- Retains the village commons profile of the site
- Expands garden beds to enhance the amenity of the site

Impact on residents

- Mitigates the impacts on residents through optimising the car park
- Maintains and enhances the biodiversity of the Parks
- Relocates seating away from residents, where possible

Sports activities

- Maximises and provides a multiprogrammable grass open space
- Supports the current and future users of the parks

Natural environment

- Incorporates bush regeneration throughout McCauley Park and the embankment
- Increases habitat for local fauna
- Identifies stormwater harvesting for irrigation
- Utilises WSUD to treat the run off from the car park
- New bins to address littering

Facilities

- Increases the amount of seating and shading around the site
- Provides new picnic and drinking fountain facilities
- Includes two outdoor fitness nodes
- Encloses and increases the number of cricket nets to 3
- Relocates the amenities building to better service users

Night activities

- Sports field lighting has been included. Council is required to lodge a Development Application including traffic, acoustics and light spill report

Maintenance

- Plants out the embankment slopes with new trees, shrubs and groundcovers
- Develops a regular maintenance program for the trees across the site

Dogs

- Doggy bins and bags to be installed
- Maintains the parks as on leash

Playground

- Expands the playground to include a new combination unit with slide.
- Integrates play experiences into the natural setting of the parks

SPORT AND RECREATION STRATEGY

The City of Ryde Sport and Recreation Strategy 2016-2026 that has been adopted by Council recommended the following actions for Gannan Park:

- Investigate to convert Gannan Park into two full sized football pitches with sportsfield lighting.
- Upgrade ancillary facilities at Gannan Park to accommodate the new uses.
- Review the design and location of sports amenity buildings to ensure appropriate physical access.

SITE ANALYSIS

Views to the city

Opportunity to frame view corridors with tree planting



Residential frontage

Provides good passive surveillance



Village green

Large open grass area creates opportunity for perimeter path/scooter track



Steep embankment

Opportunity to provide formal and informal pathways and seating areas



Overland flow

Can be redirected to ecological system that provides improved natural amenity



Bushland planting

Opportunity for increased planting to embankment and areas along boundary



Multiple entry points

Connect entry points to path network to create good permeability



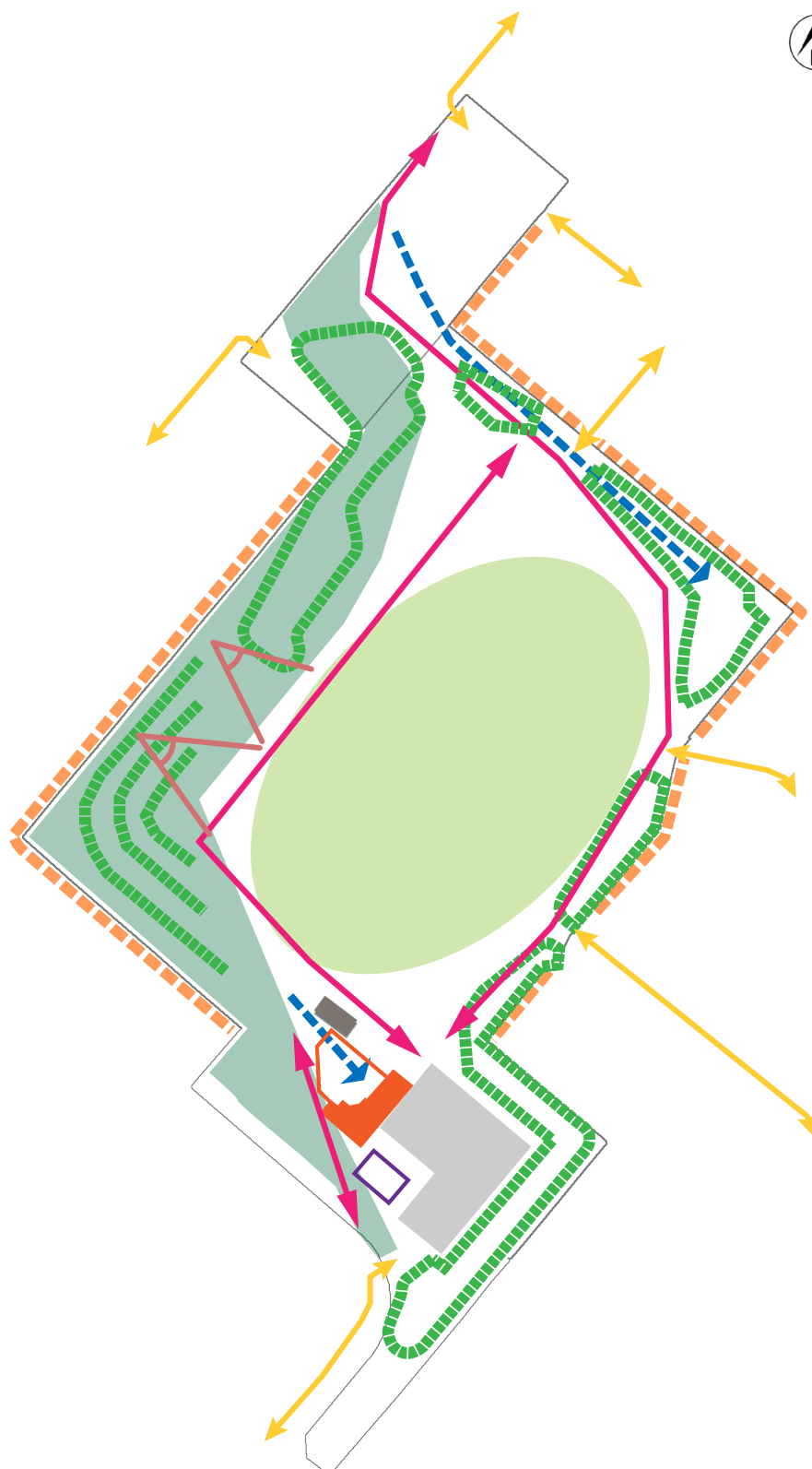
Amenities building

Opportunity to relocate to provide better access and connection to the park



Playground

Opportunity to expand to provide more variety and connection to park



KEY DESIGN PRINCIPLES

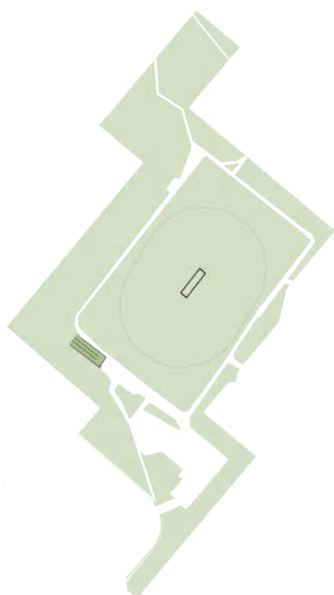
- Design flexible open spaces that can adapt to meet changing needs
- Integrate passive recreation opportunities throughout the park
- Keep the local village green feel
- Provide a focal gathering area
- Enhance the environmental qualities

DRAFT MASTERPLAN

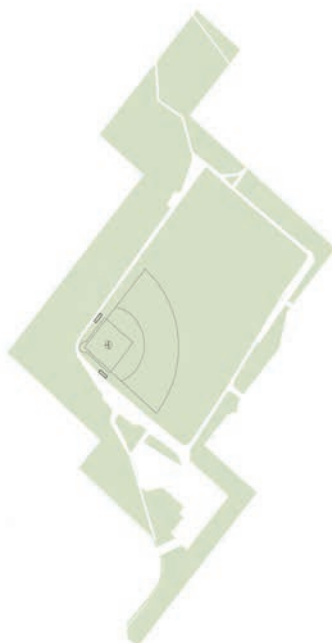


SPORTSFIELDS

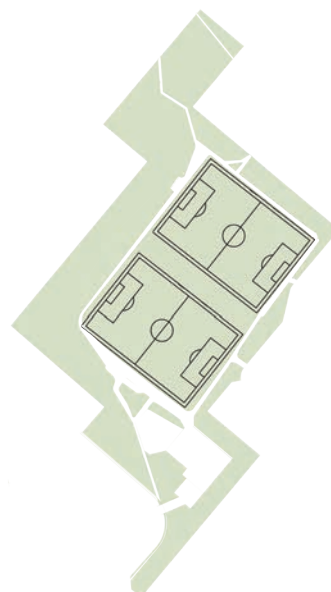
Summer - cricket



Winter - baseball



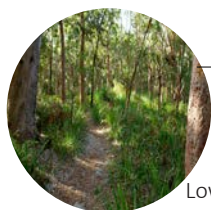
Potential soccer fields



VEGETATION



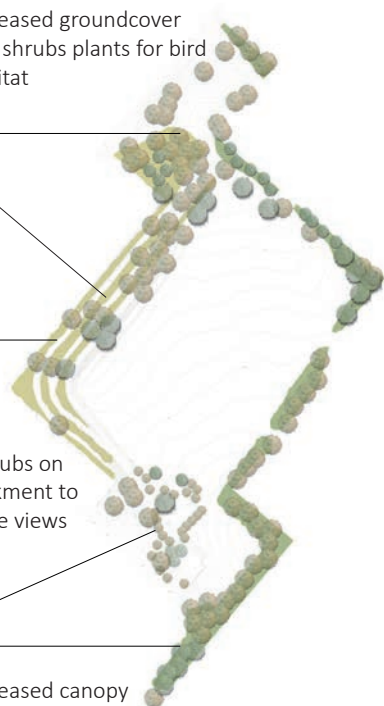
Increased groundcover and shrubs plants for bird habitat



Low shrubs on embankment to preserve views



Increased canopy cover for shade



SEATING



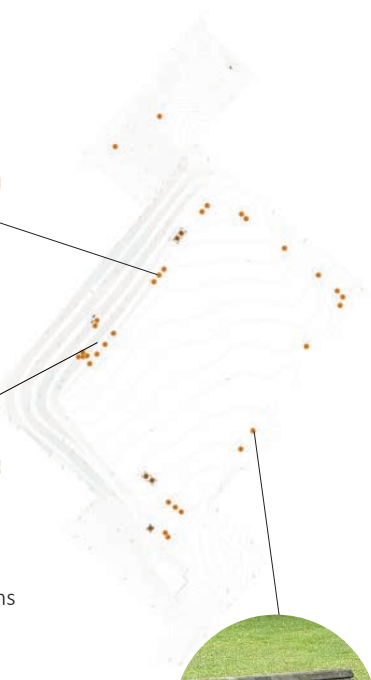
Sandstone blocks



Informal seating platforms for sports spectators



Park benches around the park perimeter

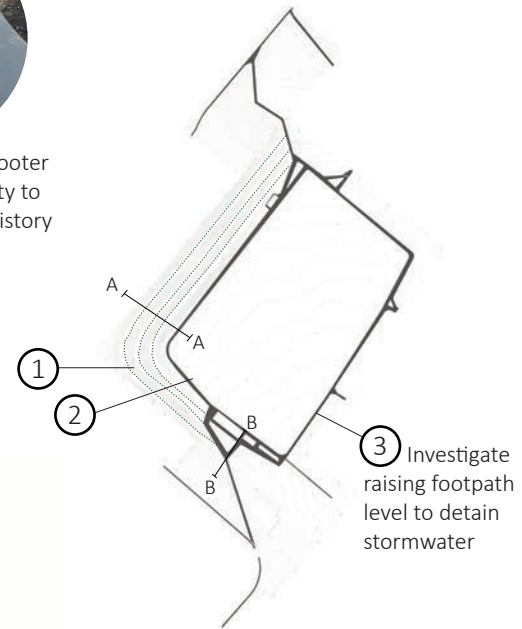


PATHS



- ① Grass trails to explore the natural area

- ② All weather scooter track. Materiality to reference the history of the site.



NEW AMENITIES



Expanded playground with nature play elements

Drinking fountains

Picnic Facilities

Accessible amenities building with stormwater harvesting



Indicative image of North Bondi amenities
Source: Sam Architects