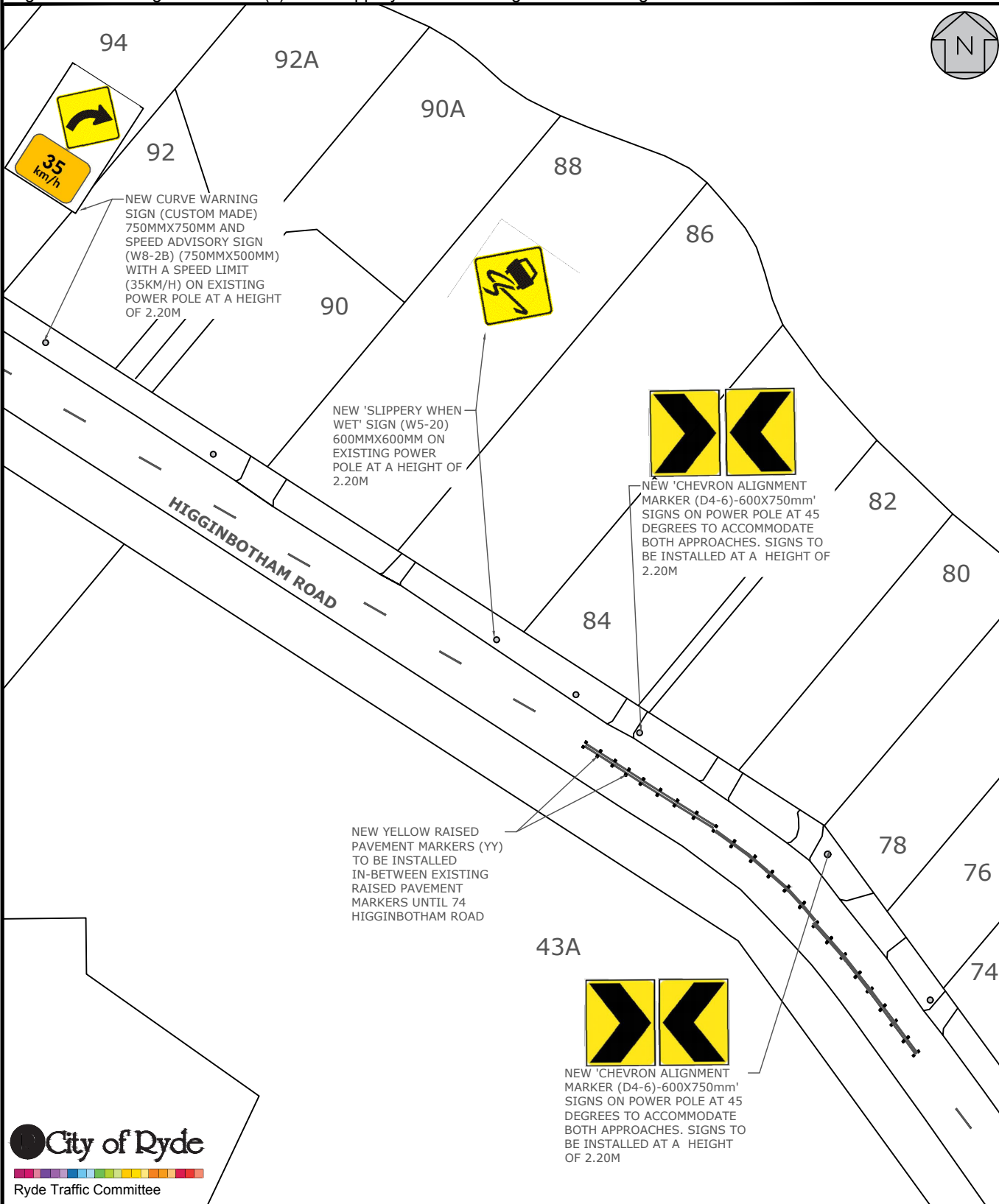


# T2019-00421 - Installation of Signs and RRPM in Higginbotham Road, Ryde

Please install: (a) 4 Chevron Alignment Signs(D4-6) (b) Yellow RRPM (c) New curve warning Sign and 35km/h speed limit Sign on an Existing Power Pole (d) New 'Slippery When Wet' Sign on an Existing Power Pole.



DISCLAIMER: NOT TO SCALE, SKETCH ONLY

## LEGEND

UNR - Unrestricted  
 NSt - No Stopping  
 NP - No Parking  
 LZ - Loading Zone  
 BZ - Bus Zone  
 TZ - Taxi Zone  
 DP - Disabled Parking  
 RP - Resident Parking

Ticket - Metered Parking  
 1P - One hour parking  
 1/4P - 15 minute parking  
 90d - Angle parking  
 BS - Bus Stop  
 MC - motorbike parking  
 Ch - Chainage  
 PP - Power pole

## NEW SIGN INVENTORY

NO	TYPE	ARROW	TIME OPERATIONS
2	CHEVRON	R	
2	CHEVRON	L	
1	W8-2B		
1	W5-20		