

CONSERVATION OF BRUSH FARM HOUSE IN EASTWOOD

Progress Photographs

BASEMENT



Removal of concrete slab in progress



Desalination of stone walls in progress



Installation of electrical services completed



Installation of air-conditioning units completed

GROUND FLOOR



Demolition works in progress



Demolition works in progress



Archaeological investigation in progress



Demolition works completed

GROUND FLOOR



Replacement of floor structure in progress



Replacement of floor structure completed



Replacement of wall panels in progress



New partition walls in progress

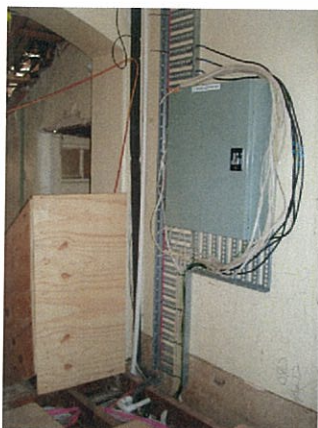
FIRST FLOOR



Demolition works in progress



Replacement of floor structure completed



Installation of electrical services in progress



Walls repair works and new windows completed

EXTERNAL WORKS



Demolition of rear verandah completed



Construction of footings in progress



Replacement of roof structure in progress



Replacement of roofing cover in progress



Roof works in Central Wing completed



Removal of existing paint in progress



Construction of new rear verandah in progress



Re-construction of balcony structure in progress