

CONSERVATION OF BRUSH FARM HOUSE IN EASTWOOD

Progress Photographs

BASEMENT



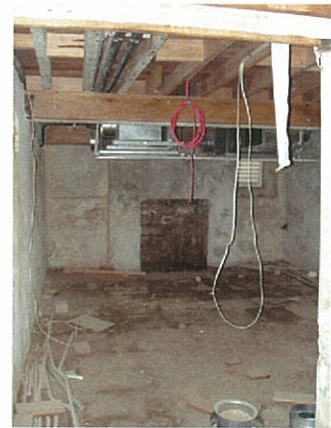
Installation of windows completed



Installation of electrical switchboard completed



Desalination of walls completed



Removal of concrete slab completed

GROUND FLOOR



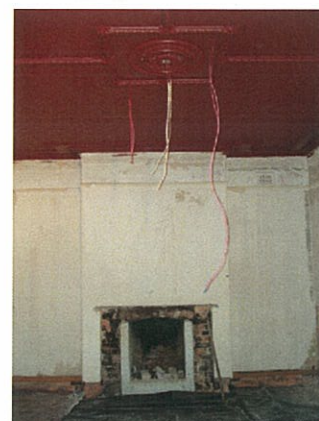
Repair works to brick walls completed



Stripping of old paint on walls and ceiling completed



Installation of new timber flooring completed



Stripping of old paint on ceilings completed

FIRST FLOOR



Installation of new timber flooring in progress



Installation of new timber flooring completed



Repair of lath and plaster walls in progress



Replacement of wall plaster and ceilings completed

EXTERNAL WORKS



Installation of roofing sheets nearing completion



External wall repair and plastering completed



Front balcony floor and balustrade completed



External wall repair and plastering completed