

# Another City of Ryde infrastructure project

For a connected and accessible city



## WORK NOTIFICATION

### NEW KAYAK LAUNCHING PLATFORM

AT PONTOON NEAR ERMINGTON BOAT RAMP,  
WHARF ROAD, MELROSE PARK

The City of Ryde is committed to the delivery of high-quality infrastructure, including upgrades to increase safe recreational use of boat ramps.

As part of the commitment, Council will build a new, safe launching platform for kayaks and other light recreational boats at the pontoon near Ermington boat ramp, Wharf Rd, Melrose Park.

#### What will the work involve?

- Supply and retrofit the kayak launching platform to the existing pontoon located adjacent to Ermington boat ramp.

#### When will the work take place?

The work is scheduled to commence from **Monday 26 February 2024** and is expected to be completed in **one week**, weather permitting. The work will be undertaken from Monday to Friday, between 7.00am and 5.00pm.

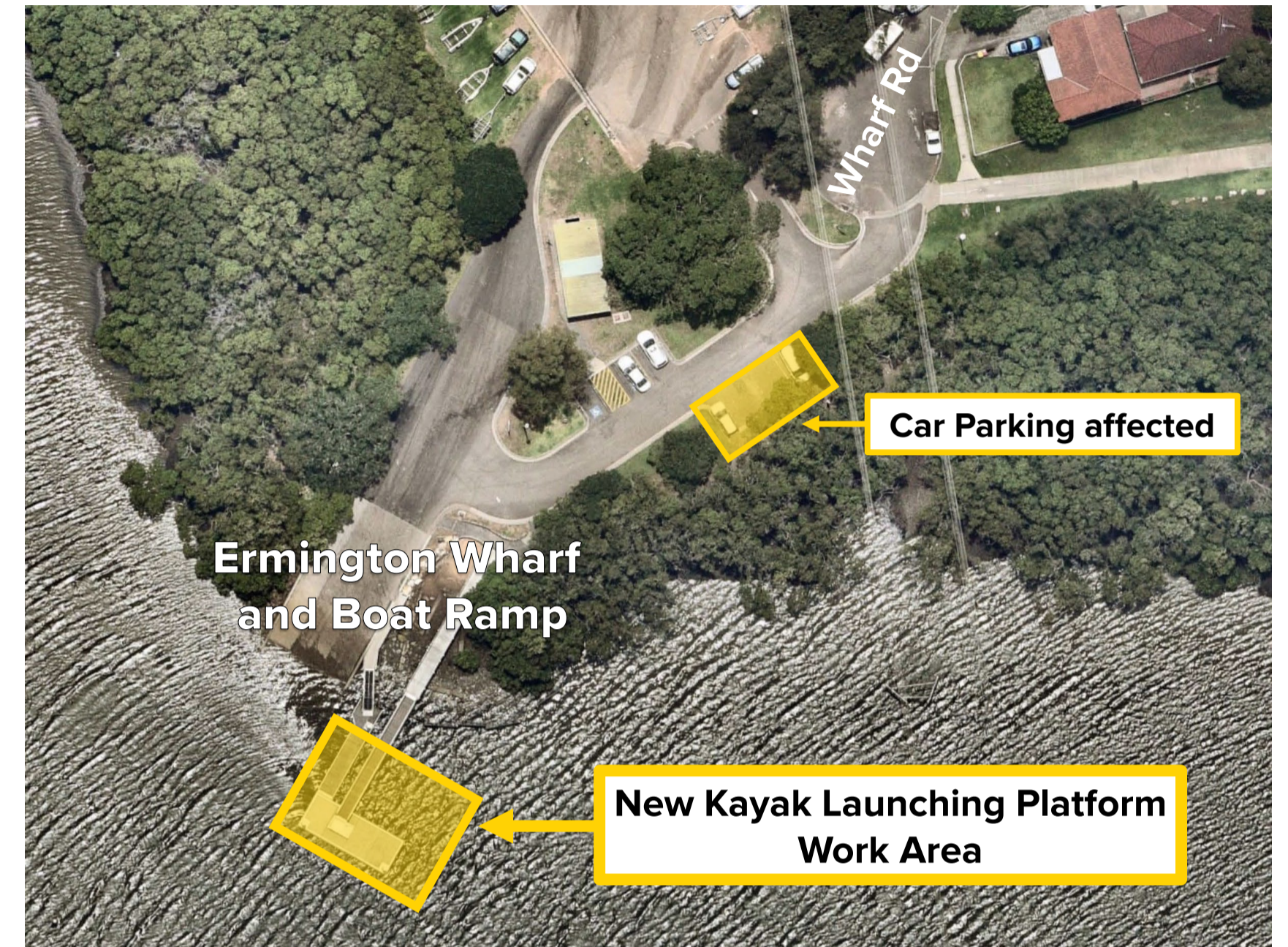
#### Changed Conditions

The car park spaces opposite the amenities building will be unavailable during this work.

The Ermington Wharf and Boat Ramp will also be inaccessible from Wednesday 28 February 2024 – Thursday 29 February 2024.

Some noise disturbance can be expected at times while this work is completed, however the work will be managed to minimise disturbance as much as practically possible.

We apologise for any inconvenience this work may cause and appreciate your cooperation.



Map is for reference only. Exact location may vary.

#### For further information please contact:

##### City of Ryde

Contact: David Chan, Project Manager

Phone: (02) 9952 8222

Email: DavidChan@ryde.nsw.gov.au

##### Contractor | Baker Built

Contact: Daniel Hayman, Project Manager

Phone: 0436 289 943

Email: daniel.hayman@bakerbuilt.com.au



Translation Assistance

한국어  
中文

[www.ryde.nsw.gov.au/projects](http://www.ryde.nsw.gov.au/projects)

*under the Open Space, Sport and Recreation Program*

 City of Ryde