

# TOWARDS INNOVATION AND SUSTAINABILITY



*Ryde will be “an innovative city, a leader in environmental, economic and social sustainability”.* City Vision

# Key Outcome Areas

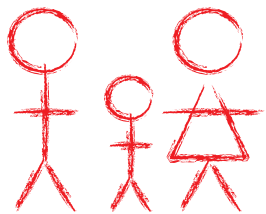
Our vision is clear that achieving sustainability outcomes is not a destination, but rather a journey of continuous improvements, key changes and innovative solutions to the social, economic, environmental and governance challenges that Council and the community face.

The principles of sustainability underpin both the value systems and actions of the City of Ryde, and we are committed to creating and maintaining an ecologically sustainable City through recognising, protecting and enhancing the City's natural areas, heritage and a culture of sustainability.

Council continues to work towards building sustainability considerations into all practice, procedure and policy making, which is ideal for creating corporate and community advances towards sustainable living.

Our key planning documents build on Council's commitment to sustainability and a continuing program of improvement and support for the City of Ryde's journey towards sustainability.

We have evaluated the sustainability considerations in accordance with key outcome areas in Council's Management Plan as follows and developed our Integrated Planning Framework to measure our performance. Essentially the services fall under the following Four Key Outcome areas:



## SOCIAL (PEOPLE)

- Community Wellbeing
- Cultural Development
- Recreational Services



## ECONOMIC (ASSETS)

- Infrastructure and Assets
- Facilities and Transport
- Economic Development



## ENVIRONMENT

- Planning and Development
- Natural Environment
- Human Health



## GOVERNANCE

- Financial, People and Knowledge Management
- Public Relations and Customer Service
- Corporate Governance

# How do we measure our performance?

Council has in place an Integrated Planning Framework. This framework establishes a performance management system which:

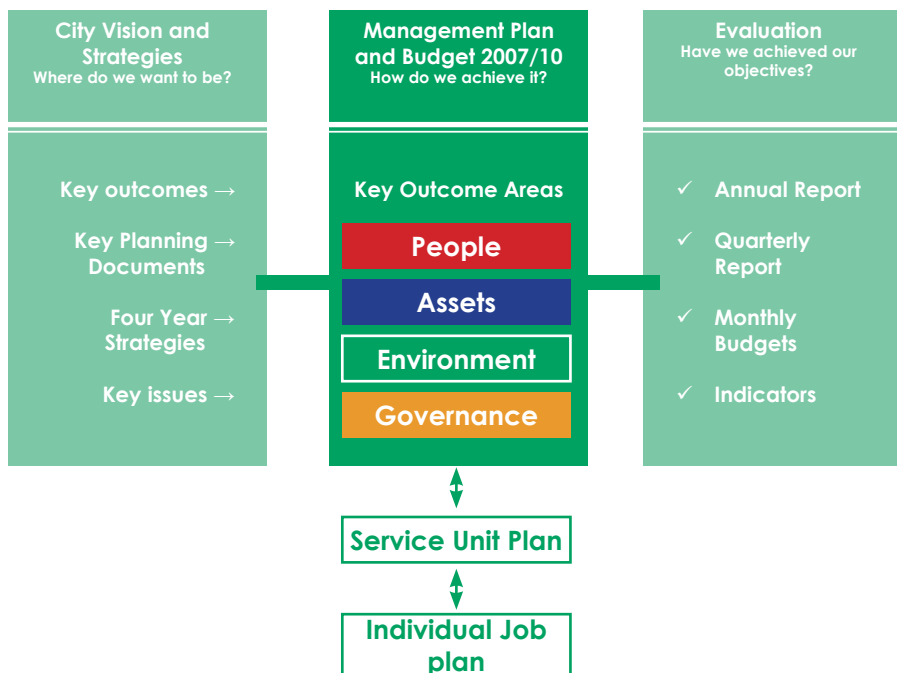
- ensures Council's Management Plan sets the strategic direction and contain clear measures of performance to enable an assessment to be made on the progress in achieving the Community's Vision.
- ensures accountability to the community and other stakeholders through open and transparent processes and reporting
- ensures an organisational approach to delivering on the community's vision, which is performance-based and incorporates continuous improvement.

The framework is currently being reviewed to incorporate the Sustainable Service Review process. Council will review all 21 service units over a five year program to challenge how we deliver our services, consultation with the community on the delivery of services, compare our services with the best on offer and implement a continuous improvement plan to ensure we are providing the community with best value in service delivery.

Council's Service Unit Plans feed into individual staff performance plans and are reviewed half yearly to monitor progress. The diagram below illustrates Council's Integrated Planning Framework.

The framework is designed to deliver on the City Vision through an integrated corporate planning process.

## INTEGRATED PLANNING FRAMEWORK



## Review and Improve

The Long Term City Strategy, 20 year Financial Strategy and 20 year Asset Management Strategy will be revisited with the community in 2009/10 to establish the 2030 vision for Ryde. It is proposed this vision will be revisited every four years in line with the election term for councils.