


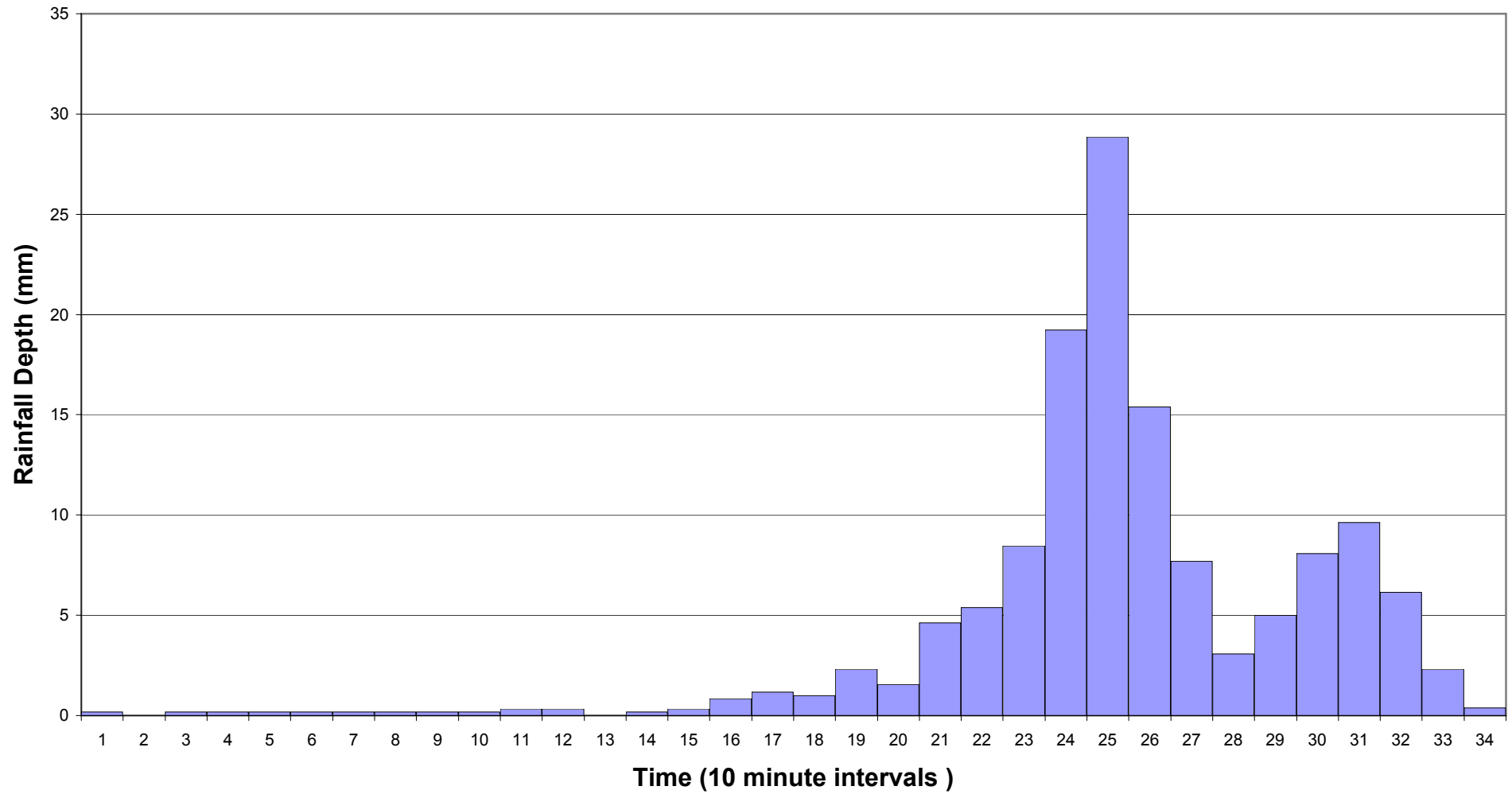


**LEGEND**

-  Study Area
-  LGA Boundary
-  Catchment Boundary

**Figure 2:**  
**Lane Cove River Catchment**

**Figure 3: November 1984 Marsfield Rainfall Temporal Pattern  
(Start at 3:00am 8 November)**



## Notes

The majority of the topography utilised in this model has been based on current conditions as details of the actual topographical conditions at the time of the flood are not known precisely. In areas where the topography has changed, the model results may not be accurate.

Inundation beyond the Macquarie Park catchment is not shown.

0 400 800  
metres

NORTH

## LEGEND Water Depth (m)

0.1 to 0.2
0.2 to 0.4
0.4 to 0.6
0.6 to 0.8
0.8 to 1.0
1.0 to 1.5
1.5 to 2.0
> 2.0

LGA Boundary

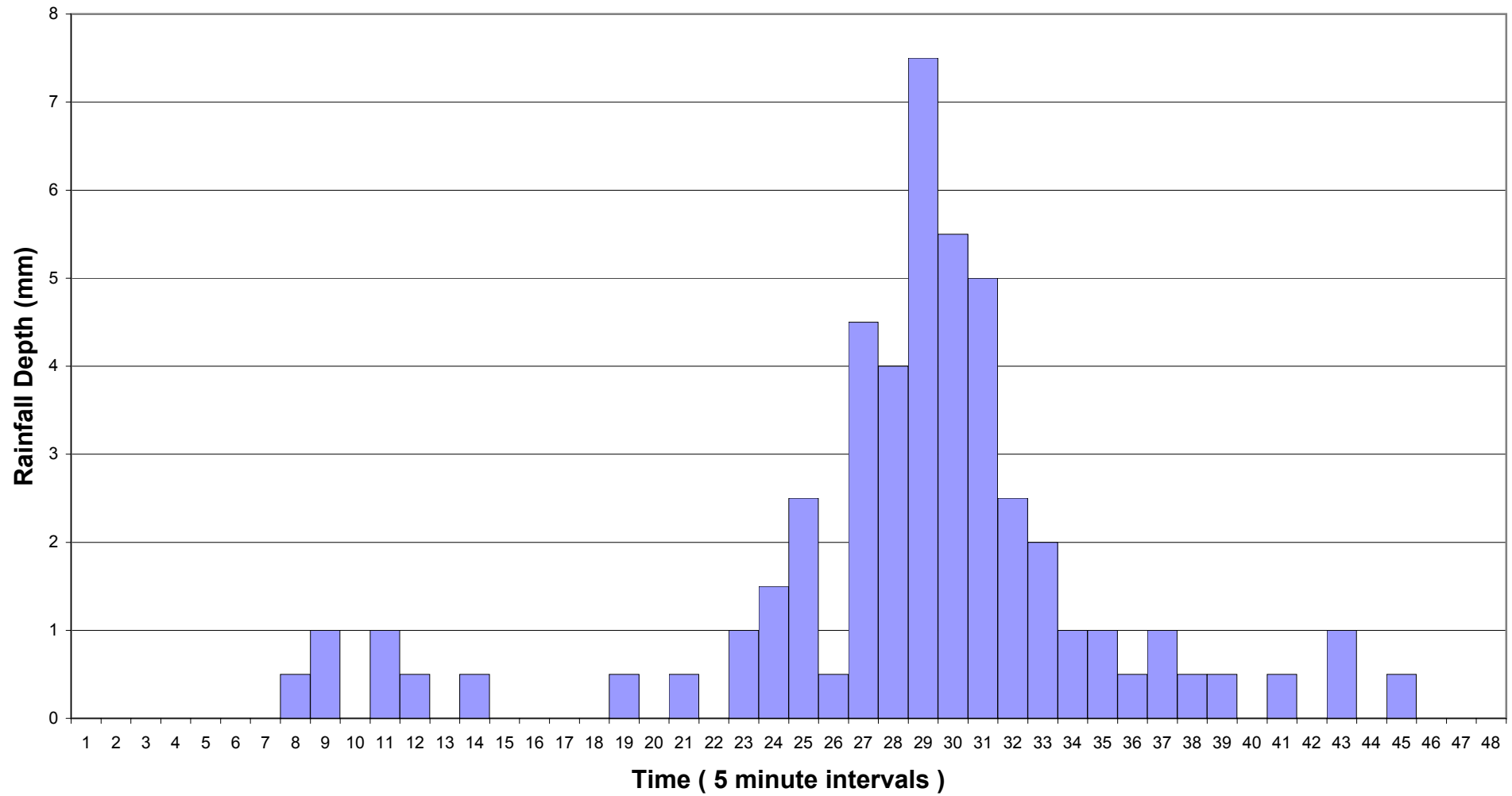
  
**Bewsher**

Job No: J1609  
File: Fig4\_MP\_CalNov64\_02.wor  
Date: 4 May 10

City of Ryde - Macquarie Park Floodplain Risk Management Study and Plan

**Figure 4:**  
**Simulation of November 1984 Flood**

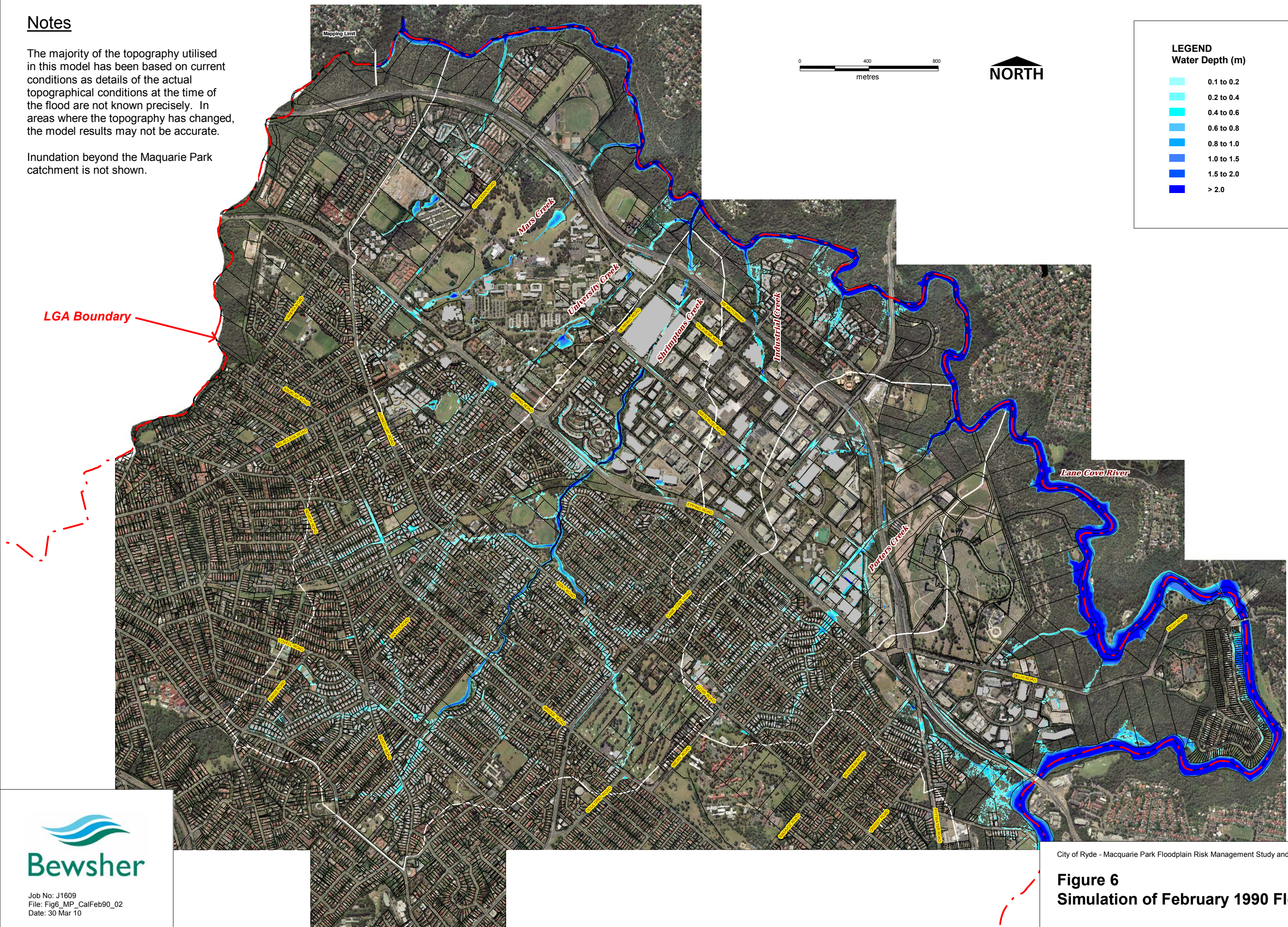
**Figure 5: February 1990 Ryde Pump Station Rainfall Temporal Pattern  
(Start at 4:00am 7 February)**



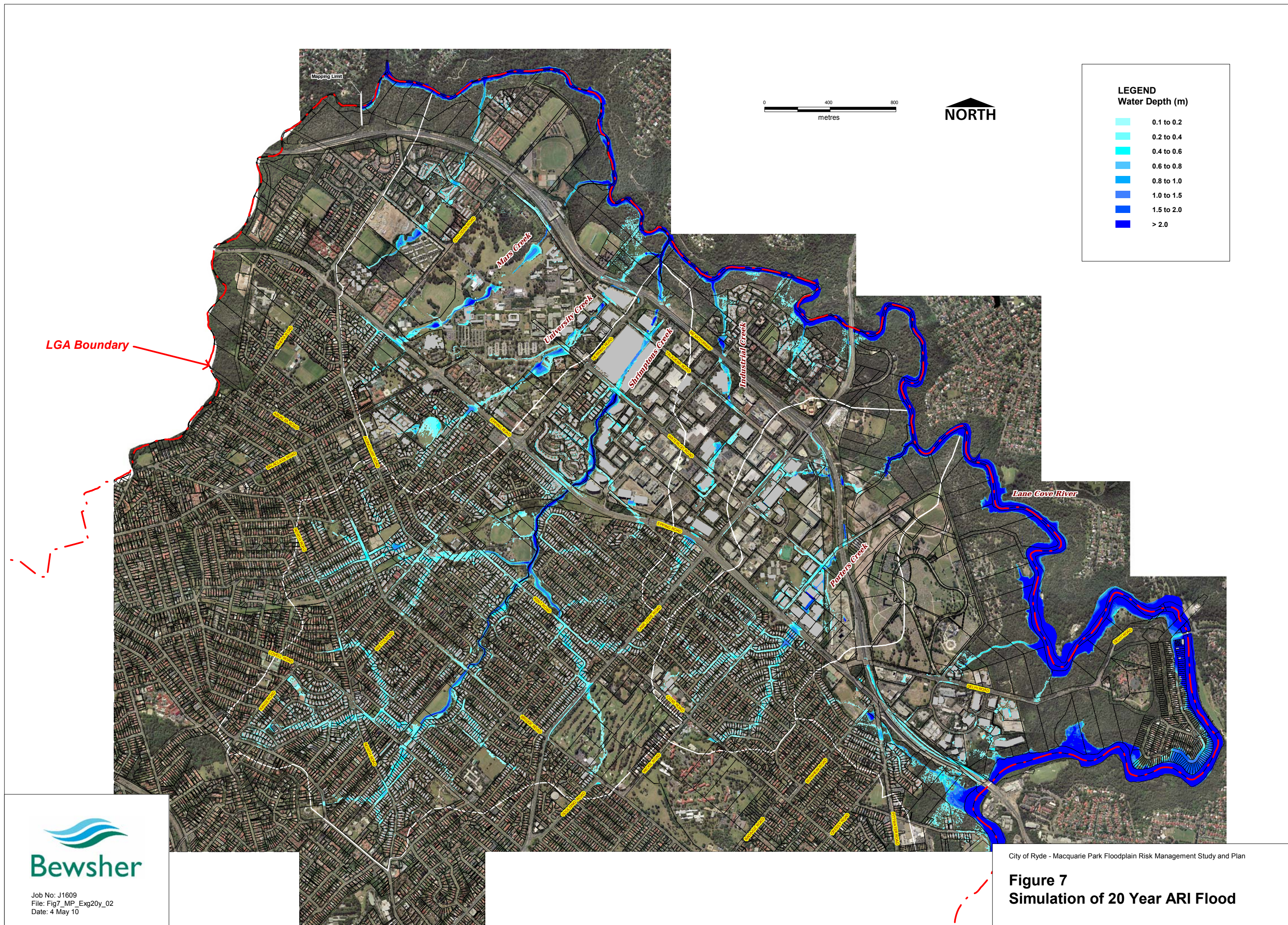
## Notes

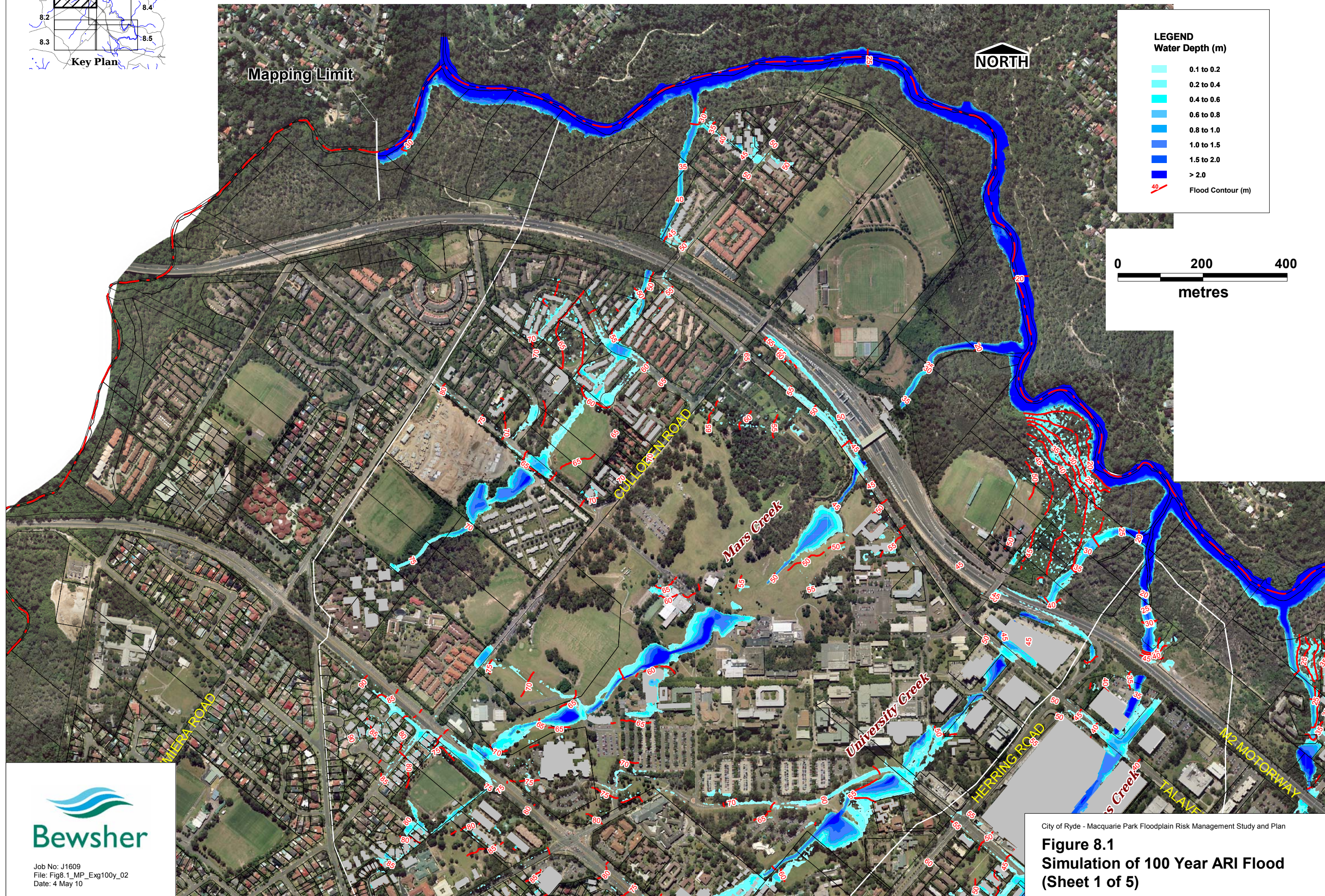
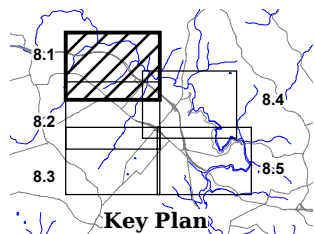
The majority of the topography utilised in this model has been based on current conditions as details of the actual topographical conditions at the time of the flood are not known precisely. In areas where the topography has changed, the model results may not be accurate.

Inundation beyond the Maquarie Park catchment is not shown.



**Figure 6**  
**Simulation of February 1990 Flood**



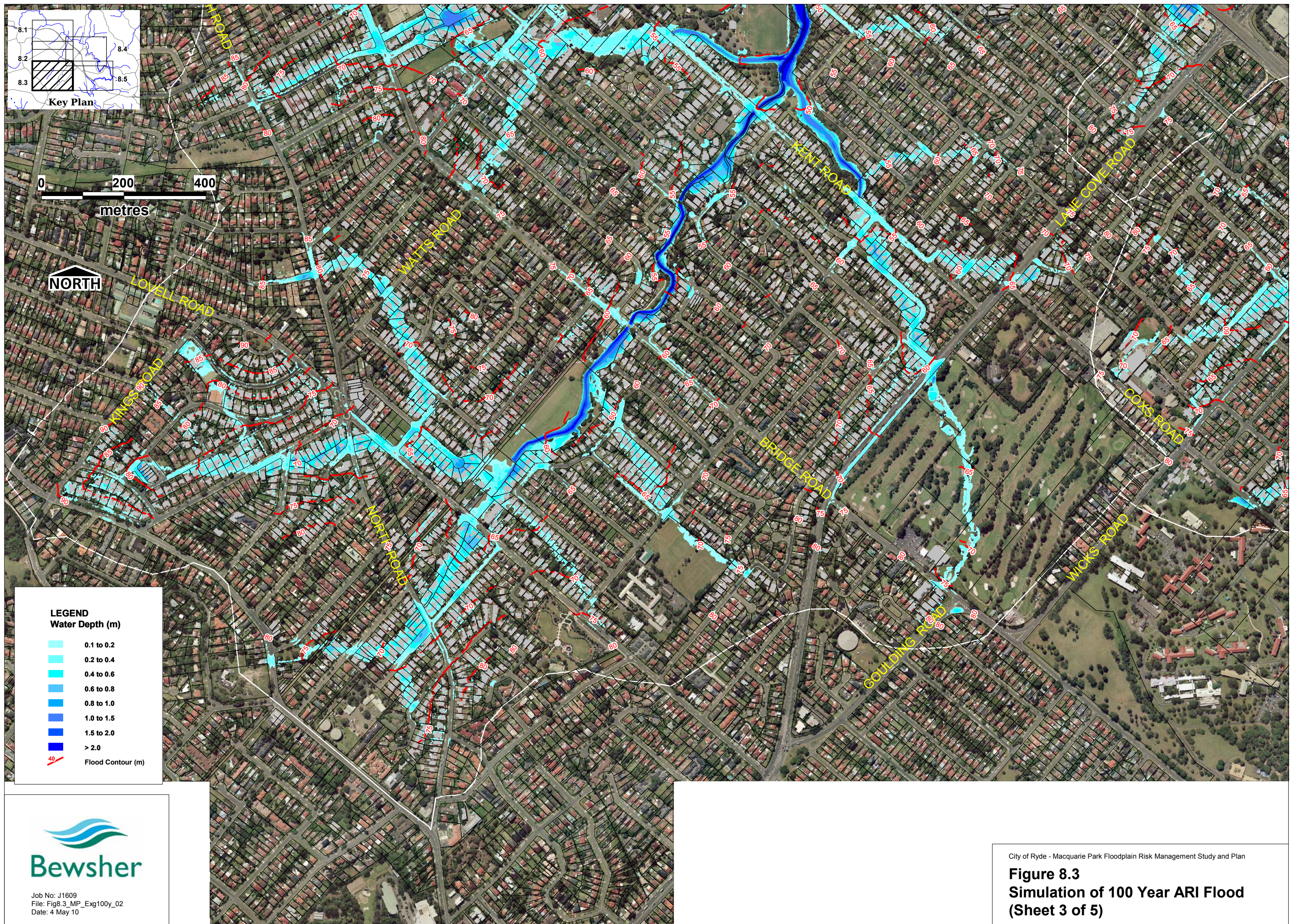


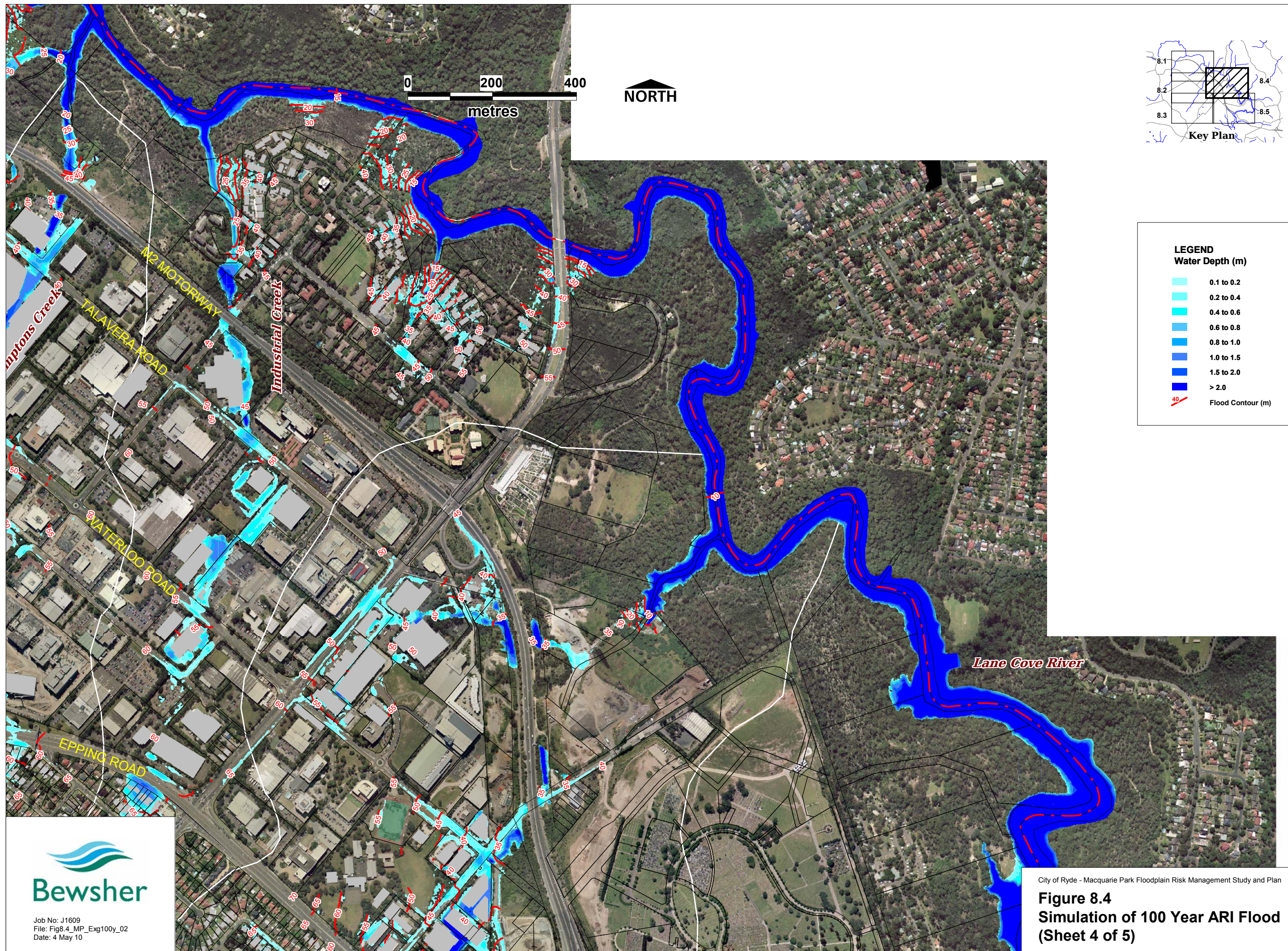
Job No: J1609  
File: Fig8.1\_MP\_Exg100y\_02  
Date: 4 May 10

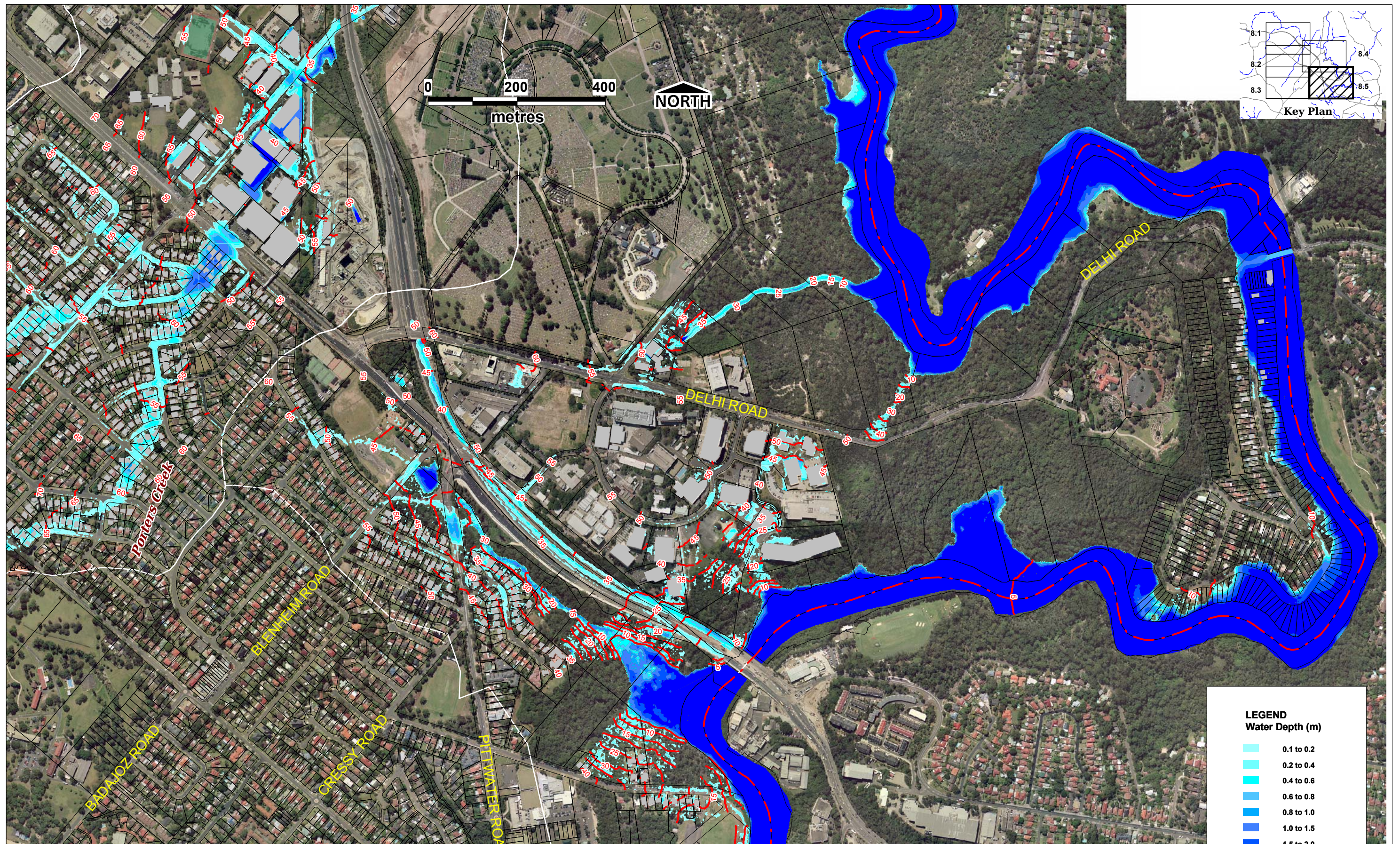
City of Ryde - Macquarie Park Floodplain Risk Management Study and Plan

**Figure 8.1**  
**Simulation of 100 Year ARI Flood**  
**(Sheet 1 of 5)**









**LEGEND**  
**Water Depth (m)**

<span style="color: lightblue;">■</span>	0.1 to 0.2
<span style="color: cyan;">■</span>	0.2 to 0.4
<span style="color: blue;">■</span>	0.4 to 0.6
<span style="color: blue;">■</span>	0.6 to 0.8
<span style="color: blue;">■</span>	0.8 to 1.0
<span style="color: blue;">■</span>	1.0 to 1.5
<span style="color: blue;">■</span>	1.5 to 2.0
<span style="color: blue;">■</span>	> 2.0
<span style="color: red;">---</span>	Flood Contour (m)



Job No: J1609  
File: Fig8.5\_MP\_Exg100y\_02  
Date: 4 May 10

City of Ryde - Macquarie Park Floodplain Risk Management Study and Plan

**Figure 8.5**  
**Simulation of 100 Year ARI Flood**  
**(Sheet 5 of 5)**

