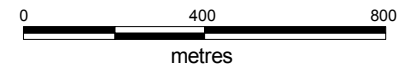


Notes

The majority of the topography utilised in this model has been based on current conditions as details of the actual topographical conditions at the time of the flood are not known precisely. In areas where the topography has changed, the model results may not be accurate.

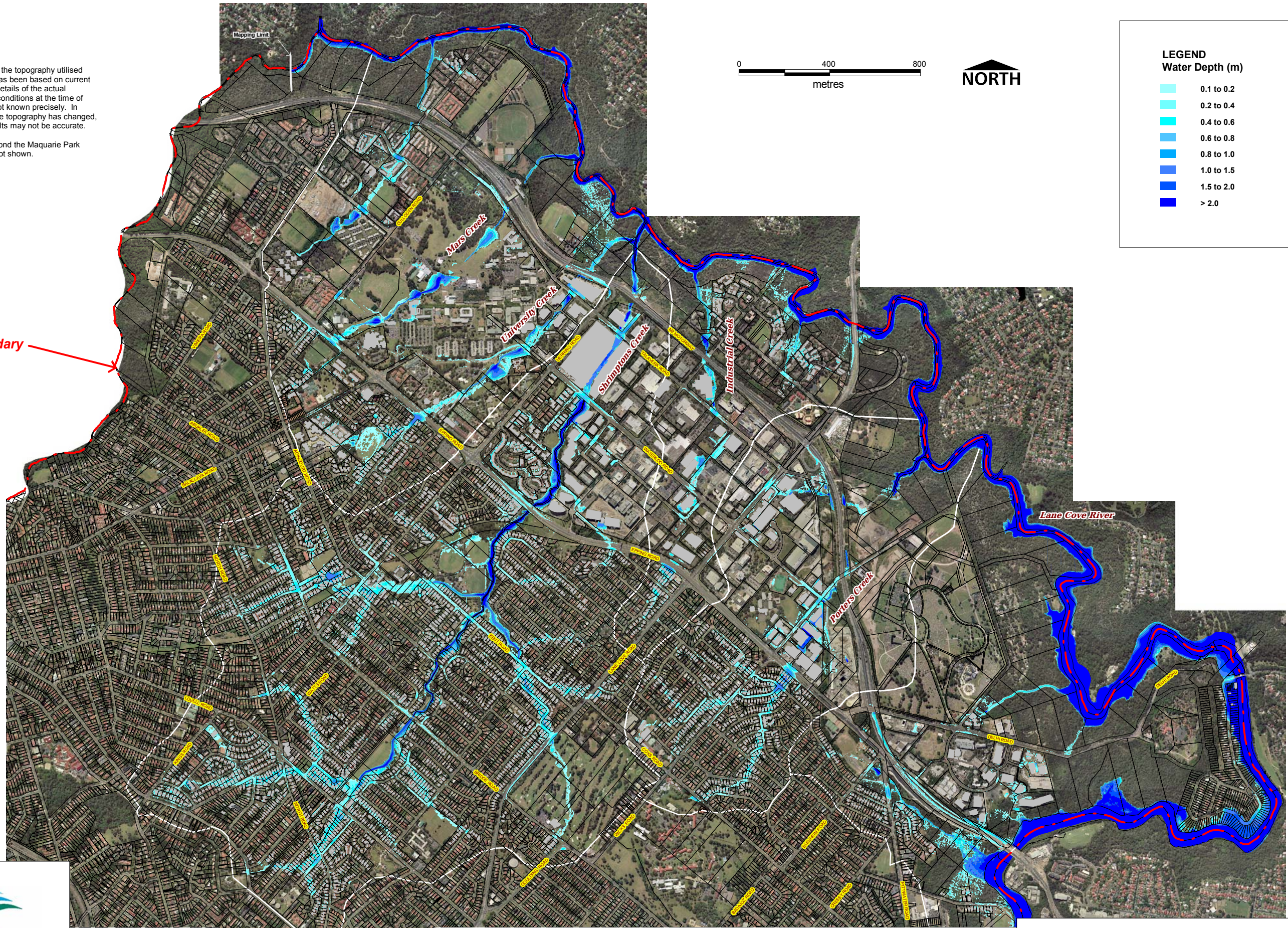
Inundation beyond the Maquarie Park catchment is not shown.



LEGEND
Water Depth (m)

- 0.1 to 0.2
- 0.2 to 0.4
- 0.4 to 0.6
- 0.6 to 0.8
- 0.8 to 1.0
- 1.0 to 1.5
- 1.5 to 2.0
- > 2.0

LGA Boundary



Job No: J1609
File: Fig4_MP_CalNov84_02.wor
Date: 4 May 10

City of Ryde - Macquarie Park Floodplain Risk Management Study and Plan

Figure 4:
Simulation of November 1984 Flood