








**LEGEND**  
Flood Level Increase (m)

	< 0.01
	0.01 - 0.05
	0.05 - 0.1
	0.1 - 0.2
	0.2 - 0.5
	> 0.5
	New Areas of Flooding

0 1  
kilometres

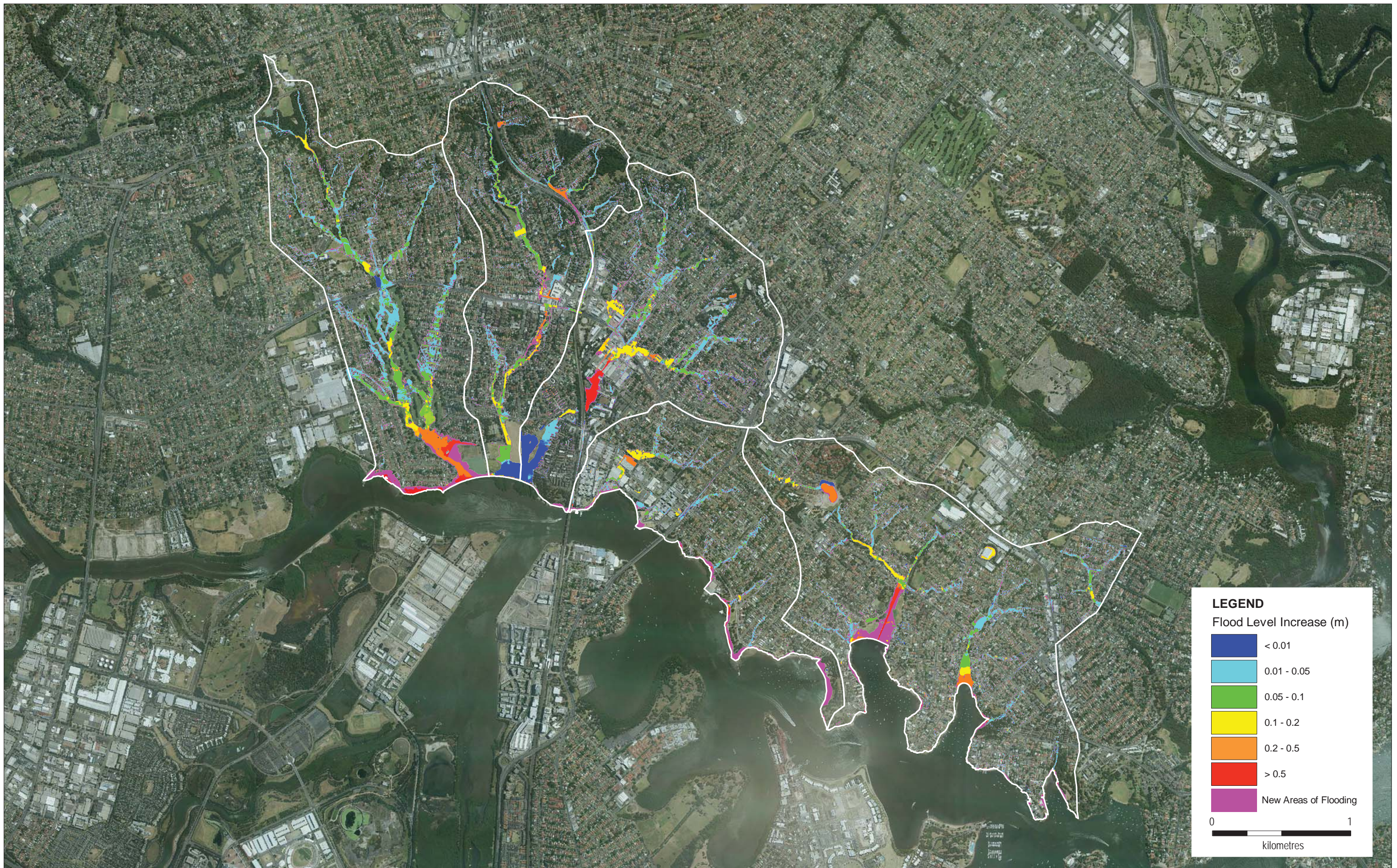


Datum: GDA 1994  
Coordinate System: MGA Zone 56

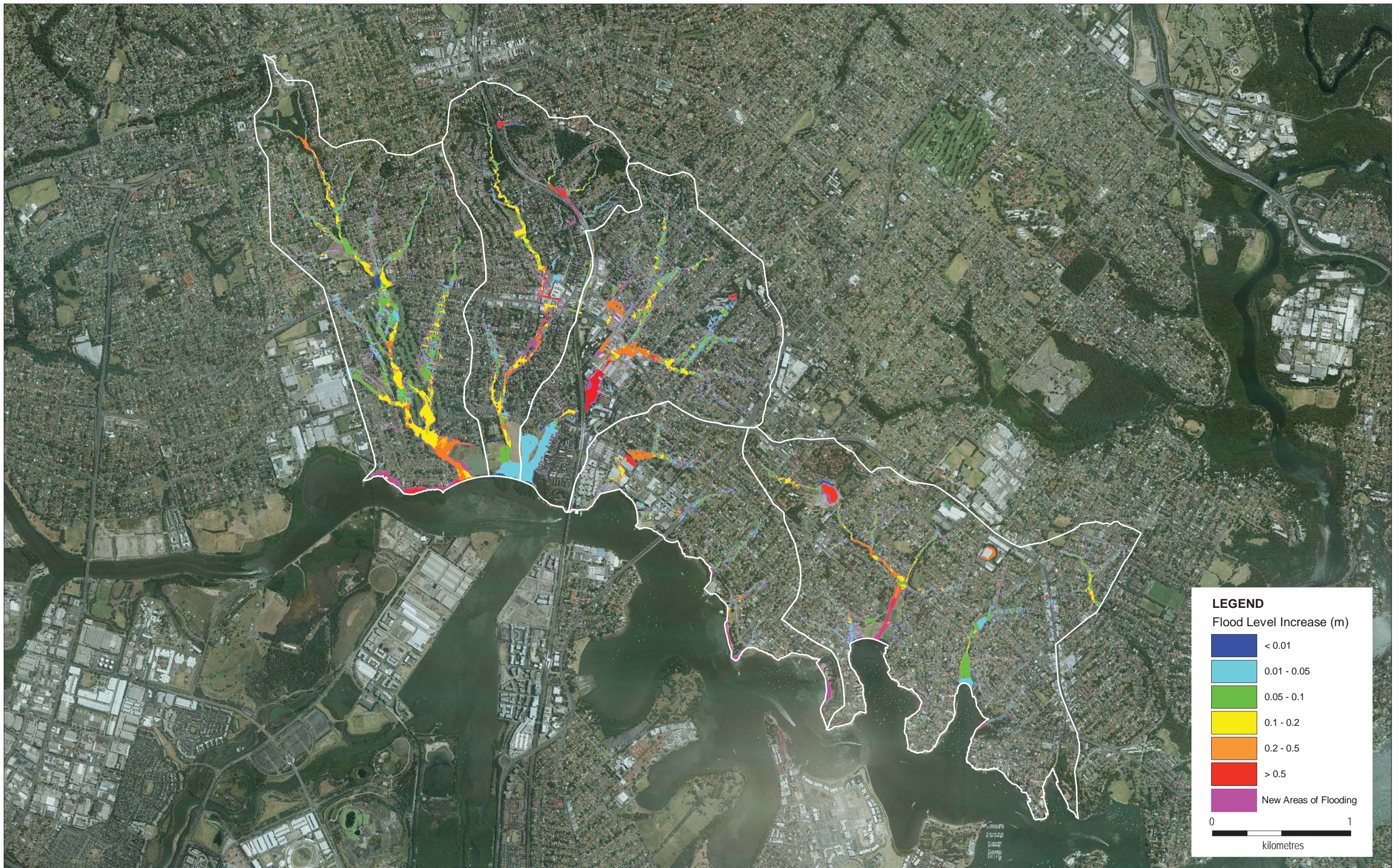
Parramatta River - Ryde Sub-Catchments  
Flood Study and Floodplain Risk Management Plan

**Impact of Climate Change on Flood Level**  
**20% Increase in Rainfall Intensity, 2050 Sea Level**

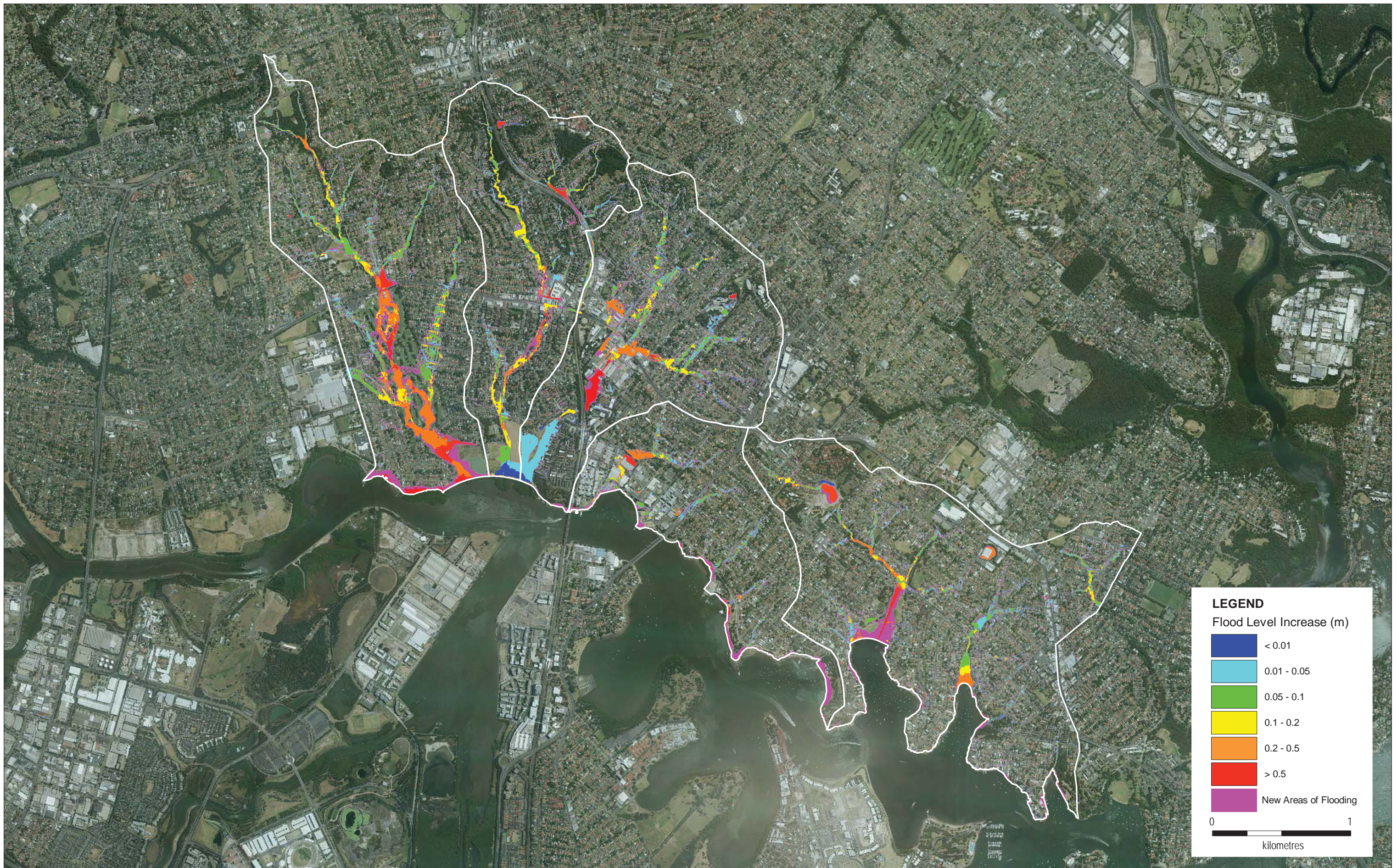






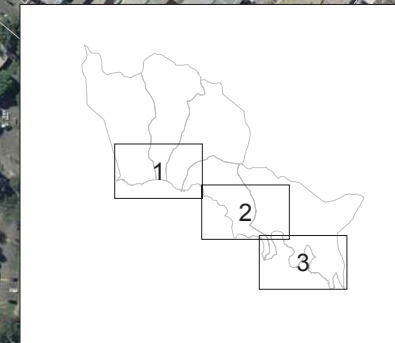








NOTE: Inundation extents derived from Aerial Laser Survey ground elevations



**LEGEND**  
Tidal Inundation Extents - Existing Sea Level

- 5% AEP Ocean Level (1.34m AHD)
- Highest Astronomical Tide (1.15m AHD)
- Mean High Water Spring (0.68m AHD)

0 200  
metres



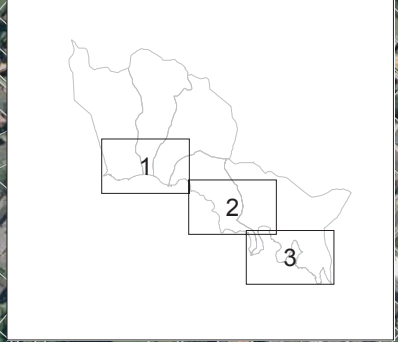
Datum: GDA 1994  
Coordinate System: MGA Zone 56

Parramatta River - Ryde Sub-Catchments  
Flood Study and Floodplain Risk Management Plan

**Tidal Inundation Extents - Existing Sea Level**  
Sheet 1 of 3



NOTE: Inundation extents derived from Aerial Laser Survey ground elevations



**LEGEND**  
Tidal Inundation Extents - Existing Sea Level

- 5% AEP Ocean Level (1.34m AHD)
- Highest Astronomical Tide (1.15m AHD)
- Mean High Water Spring (0.68m AHD)

0 200  
metres

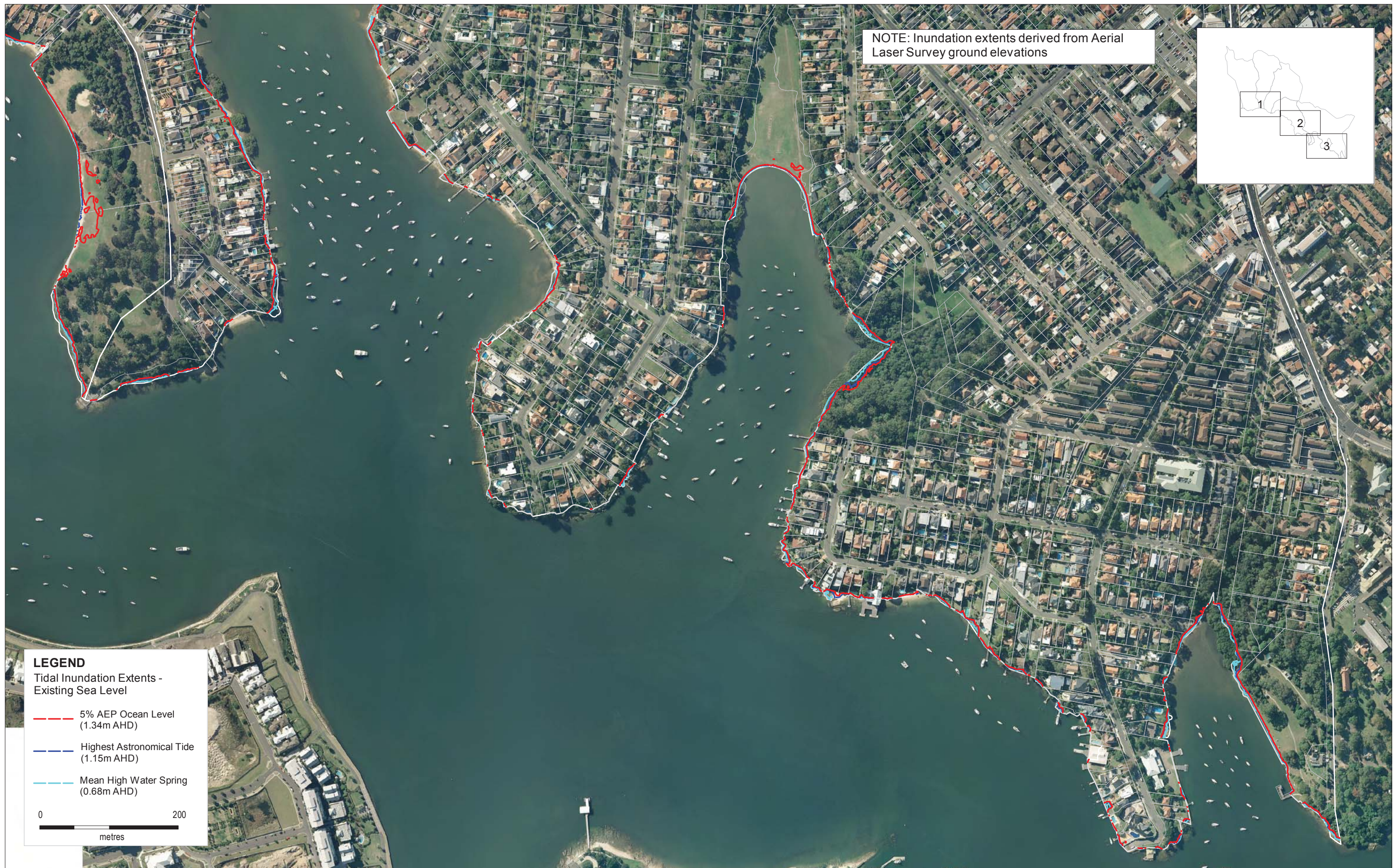


Datum: GDA 1994  
Coordinate System: MGA Zone 56

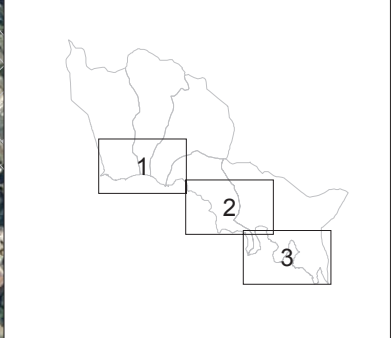
Parramatta River - Ryde Sub-Catchments  
Flood Study and Floodplain Risk Management Plan

**Tidal Inundation Extents - Existing Sea Level**  
Sheet 2 of 3





NOTE: Inundation extents derived from Aerial Laser Survey ground elevations



**LEGEND**  
Tidal Inundation Extents - Existing Sea Level

- 5% AEP Ocean Level (1.34m AHD)
- Highest Astronomical Tide (1.15m AHD)
- Mean High Water Spring (0.68m AHD)

0 200  
metres



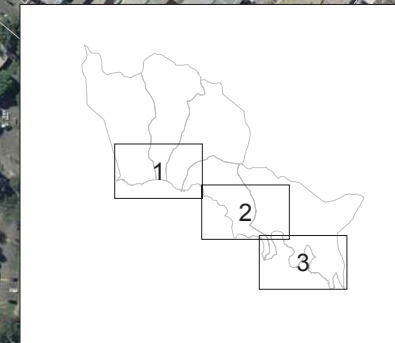
Datum: GDA 1994  
Coordinate System: MGA Zone 56

Parramatta River - Ryde Sub-Catchments  
Flood Study and Floodplain Risk Management Plan

**Tidal Inundation Extents - Existing Sea Level**  
Sheet 3 of 3



NOTE: Inundation extents derived from Aerial Laser Survey ground elevations



**LEGEND**  
Tidal Inundation Extents - 2050 Sea Level

- 5% AEP Ocean Level (1.74m AHD)
- Highest Astronomical Tide (1.55m AHD)
- Mean High Water Spring (1.08m AHD)

0 200  
metres



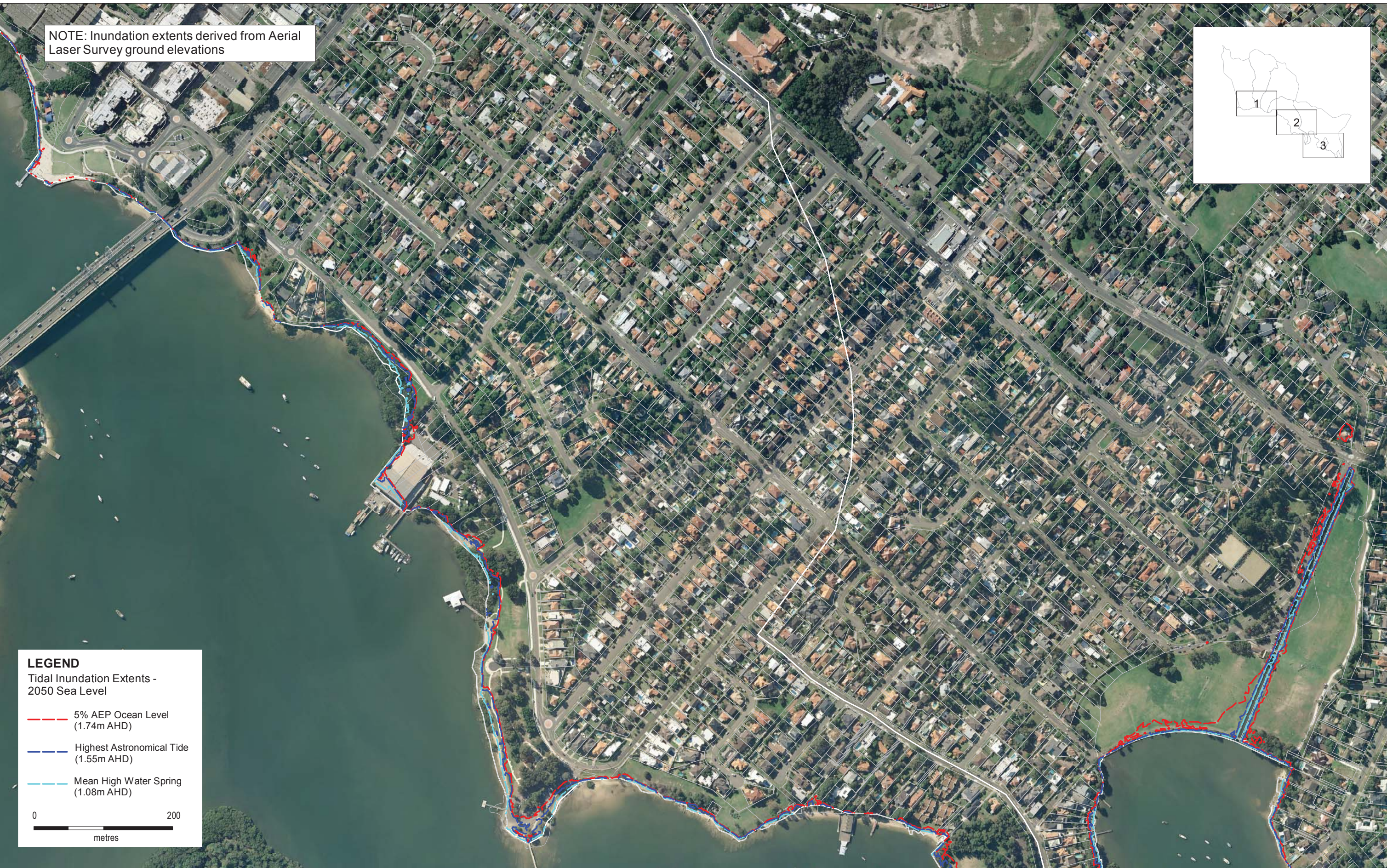
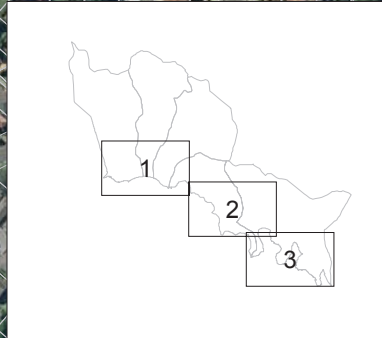
Datum: GDA 1994  
Coordinate System: MGA Zone 56

Parramatta River - Ryde Sub-Catchments  
Flood Study and Floodplain Risk Management Plan

**Tidal Inundation Extents - 2050 Sea Level**  
Sheet 1 of 3



NOTE: Inundation extents derived from Aerial Laser Survey ground elevations



**LEGEND**  
Tidal Inundation Extents - 2050 Sea Level

- 5% AEP Ocean Level (1.74m AHD)
- Highest Astronomical Tide (1.55m AHD)
- Mean High Water Spring (1.08m AHD)

0 200  
metres

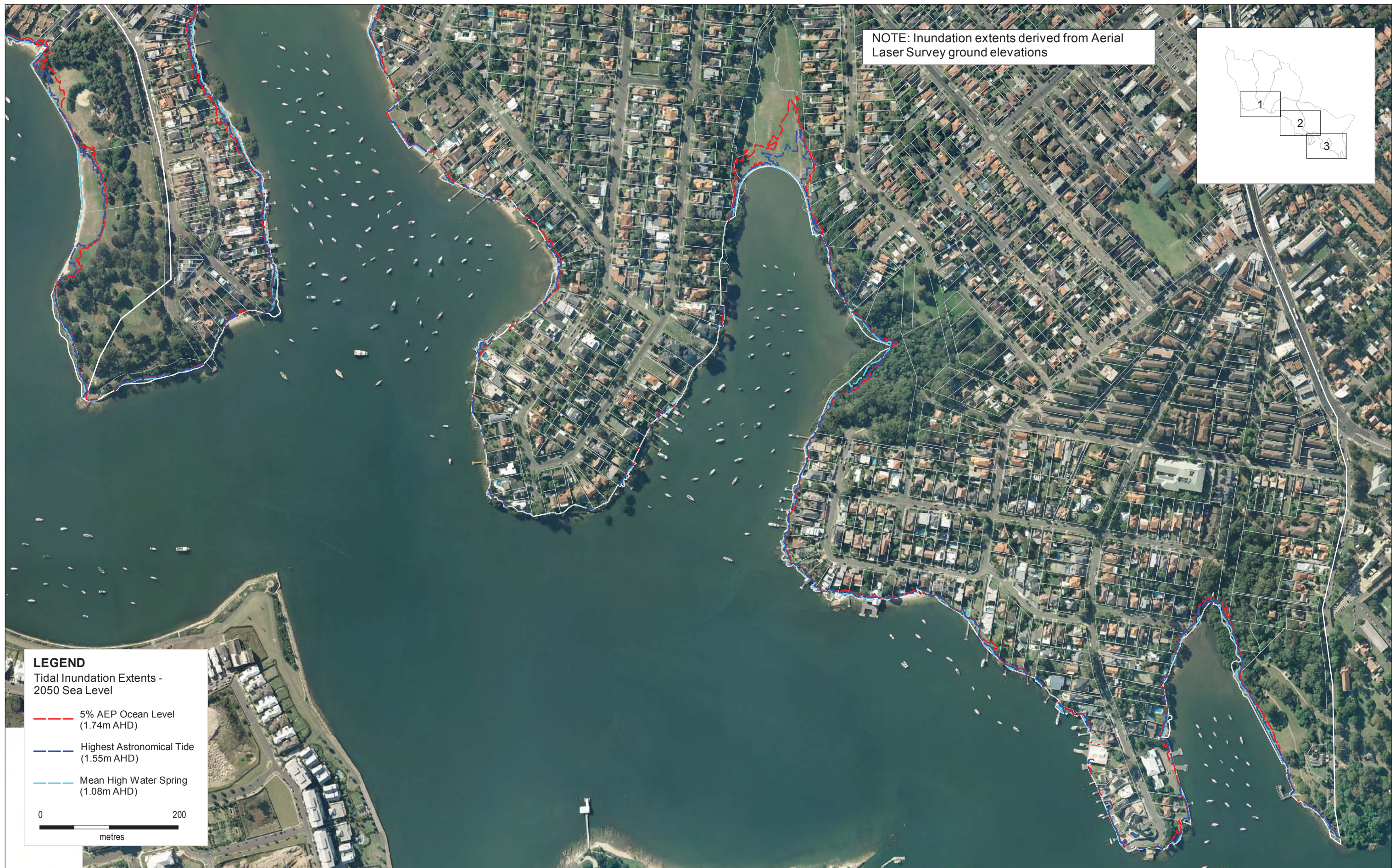


Datum: GDA 1994  
Coordinate System: MGA Zone 56

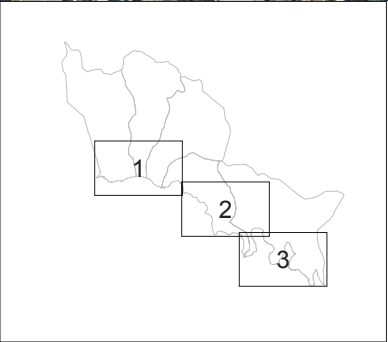
Parramatta River - Ryde Sub-Catchments  
Flood Study and Floodplain Risk Management Plan

**Tidal Inundation Extents - 2050 Sea Level**  
Sheet 2 of 3





NOTE: Inundation extents derived from Aerial Laser Survey ground elevations



**LEGEND**  
Tidal Inundation Extents - 2050 Sea Level

- 5% AEP Ocean Level (1.74m AHD)
- Highest Astronomical Tide (1.55m AHD)
- Mean High Water Spring (1.08m AHD)

0 200  
metres



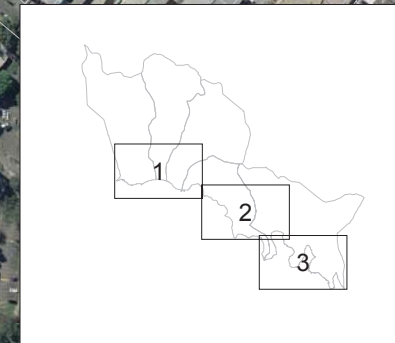
Datum: GDA 1994  
Coordinate System: MGA Zone 56

Parramatta River - Ryde Sub-Catchments  
Flood Study and Floodplain Risk Management Plan

**Tidal Inundation Extents - 2050 Sea Level**  
Sheet 3 of 3



NOTE: Inundation extents derived from Aerial Laser Survey ground elevations



**LEGEND**  
Tidal Inundation Extents - 2100 Sea Level

- 5% AEP Ocean Level (2.24m AHD)
- Highest Astronomical Tide (2.05m AHD)
- Mean High Water Spring (1.58m AHD)

0 200  
metres



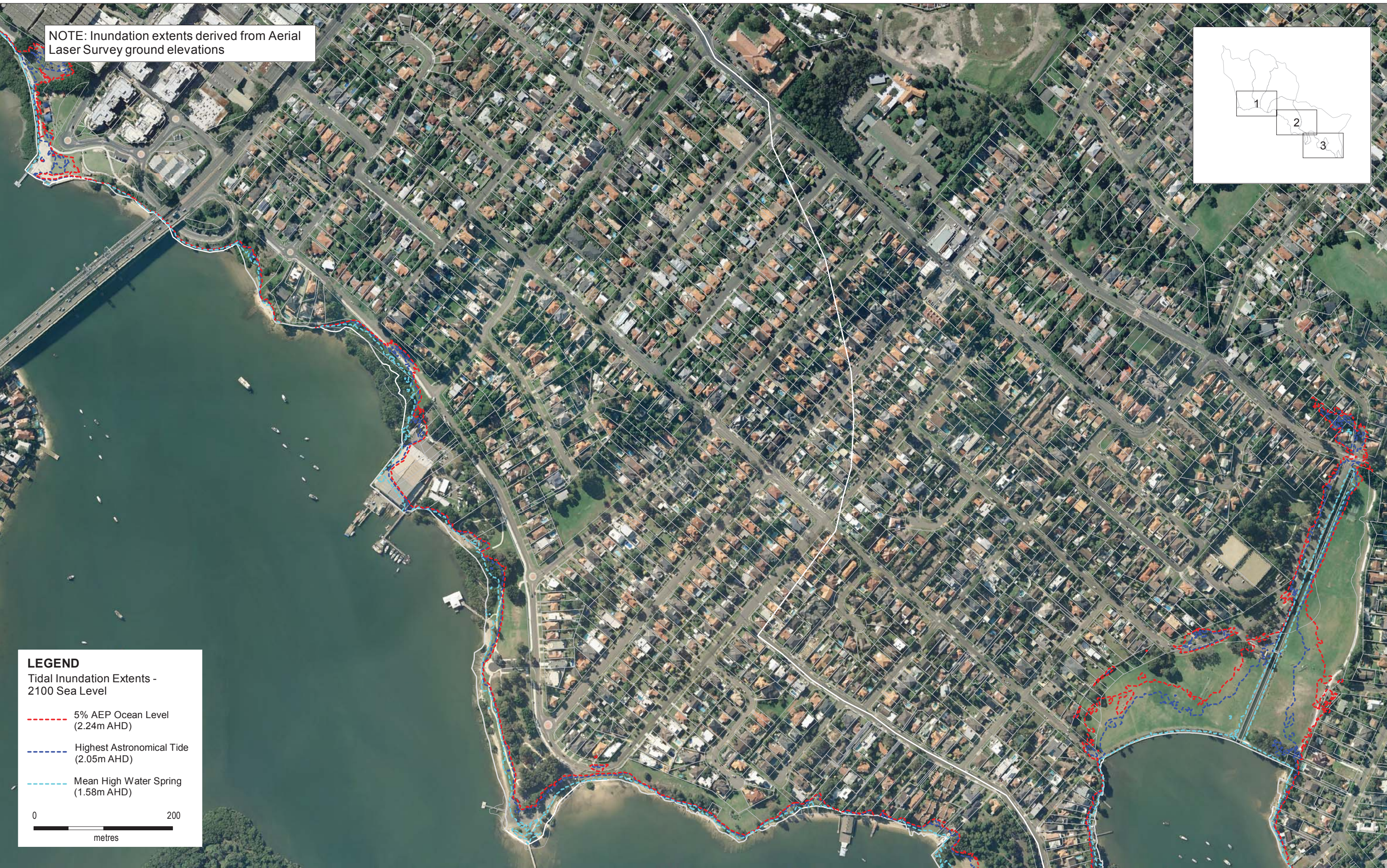
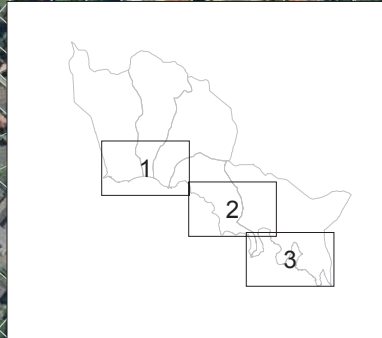
Datum: GDA 1994  
Coordinate System: MGA Zone 56

Parramatta River - Ryde Sub-Catchments  
Flood Study and Floodplain Risk Management Plan

**Tidal Inundation Extents - 2100 Sea Level**  
Sheet 1 of 3



NOTE: Inundation extents derived from Aerial Laser Survey ground elevations



**LEGEND**  
Tidal Inundation Extents - 2100 Sea Level

- 5% AEP Ocean Level (2.24m AHD)
- Highest Astronomical Tide (2.05m AHD)
- Mean High Water Spring (1.58m AHD)

0 200  
metres

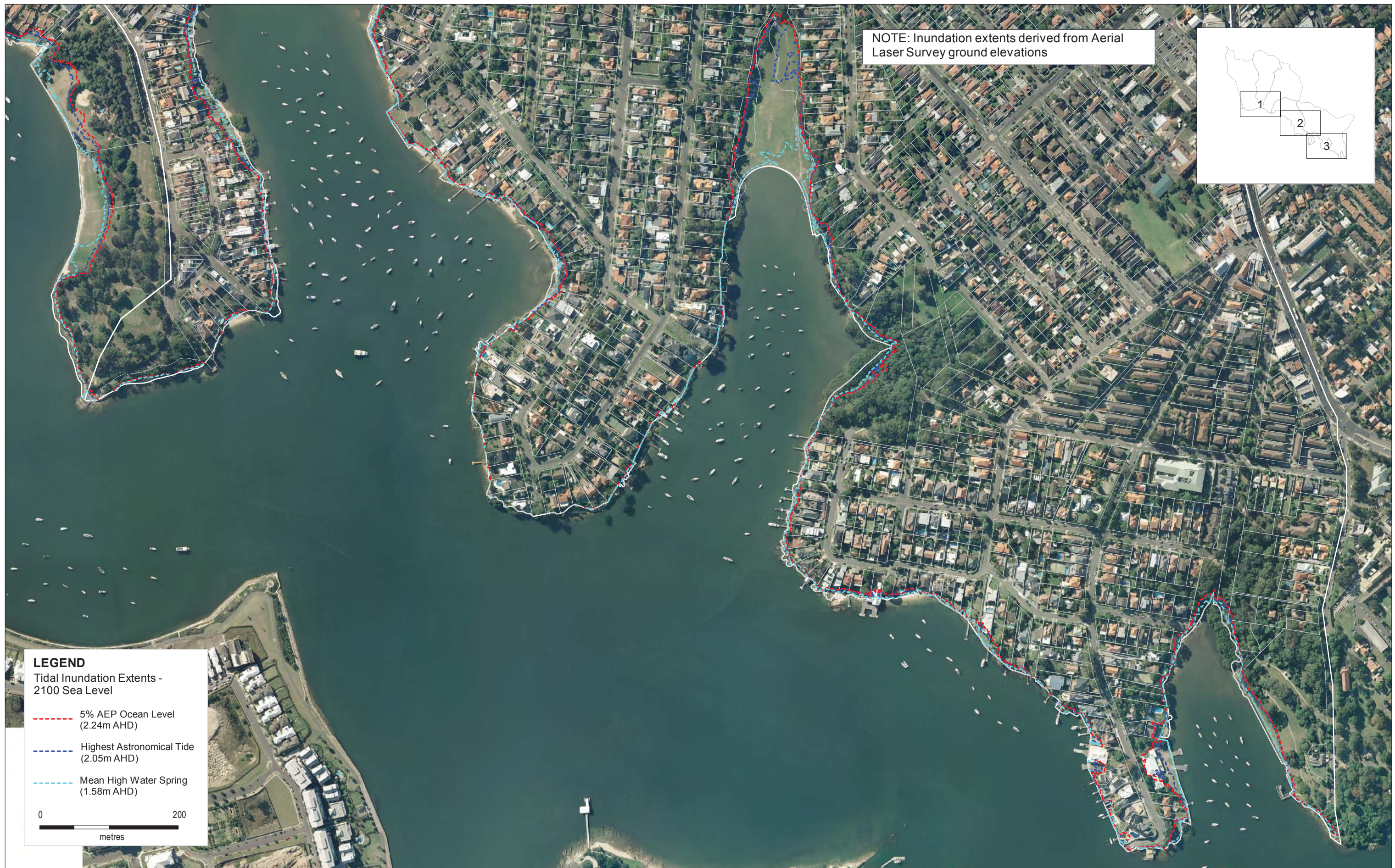


Datum: GDA 1994  
Coordinate System: MGA Zone 56

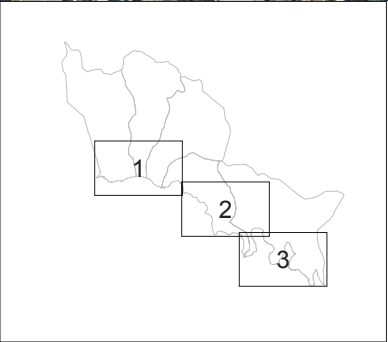
Parramatta River - Ryde Sub-Catchments  
Flood Study and Floodplain Risk Management Plan

**Tidal Inundation Extents - 2100 Sea Level**  
Sheet 2 of 3





NOTE: Inundation extents derived from Aerial Laser Survey ground elevations



**LEGEND**  
Tidal Inundation Extents - 2100 Sea Level

- - - 5% AEP Ocean Level (2.24m AHD)
- - - Highest Astronomical Tide (2.05m AHD)
- - - Mean High Water Spring (1.58m AHD)

0 200  
metres



Datum: GDA 1994  
Coordinate System: MGA Zone 56

Parramatta River - Ryde Sub-Catchments  
Flood Study and Floodplain Risk Management Plan

**Tidal Inundation Extents - 2100 Sea Level**  
Sheet 3 of 3