



ANZAC PARK MASTERPLAN REPORT ADOPTED BY COUNCIL

26 May 2022

 City of Ryde
Lifestyle and opportunity
@ your doorstep

CONTENTS PAGE

1.0 INTRODUCTION

1.1 ANZAC PARK AERIAL..... 2

1.2 BACKGROUND..... 3

2.0 CONTEXT

2.1 RYDE CONTEXT 5

2.2 SITE LOCALITY 6

2.3 SURROUNDING GREEN SPACE..... 7

2.4 SURROUNDING LAND USE 8

2.5 SITE HISTORY..... 9

2.6 DEMOGRAPHICS..... 10

3.0 SITE ANALYSIS

3.1 SITE CHARACTER 12

3.2 EXISTING MOVEMENT 13

3.3 EXISTING FACILITIES 14

3.4 EXISTING ENVIRONMENT 15

3.5 EXISTING HERITAGE AND SIGNIFICANT FEATURES 16

3.6 OPPORTUNITIES & CONSTRAINTS 17

4.0 DESIGN STRATEGY

4.1 VISIONS & PRINCIPLES 19

4.2 DESIGN APPROACH 20

4.3 PROPOSED ARRANGEMENT 21

4.4 PROPOSED MOVEMENT 22

4.5 PROPOSED SPATIAL ARRANGEMENT 23

4.6 PROPOSED PLANTING 24

5.0 MASTERPLAN

5.1 OVERALL PLAN 26

5.2 DETAILED PLAN 01..... 27

5.3 DETAILED PLAN 02 28

5.4 SECTIONS 01 29

5.5 SECTIONS 02 30

5.6 SECTIONS 03 31

5.7 PRECEDENT IMAGES 01 32

5.8 PRECEDENT IMAGES 02 33

5.9 PRECEDENT IMAGES 03 34

5.10 PERSPECTIVE 01 35

5.11 PERSPECTIVE 02 36

5.12 PERSPECTIVE 03 37

5.13 PERSPECTIVE 04 38

5.14 PERSPECTIVE 05 39

5.15 PERSPECTIVE 06 40

5.16 PLANTING PALETTE 41

5.17 CANOPY COVERAGE 42

5.18 CIRCULATION 43

5.19 LIGHTING 44

5.20 STAGING 45

5.21 REFERENCES 46

Masterplan Report, plans, images and sections prepared by:



DOCUMENT CONTROL

REVISION	DATE	STATUS
1	09/12/2021	Initial draft for review
2	01/02/2022	Draft for Stage 2 Community Consultation
3	14/04/2022	Draft for Council Adoption
4	24/05/2022	Final Masterplan Adopted by Council
5	26/05/2022	Amended Masterplan Adopted by Council



1.0 INTRODUCTION



Anzac Park is located in West Ryde to the east of West Ryde Train Station and town centre. Anzac Park (the Park) is approximately 150m from West Ryde Station and 50m from the town centre making it within close proximity to infrastructure and services. Anzac Park is bounded on all four sides by streets including Ryedale Lane to the west, Wattle Street to the north, Anzac Avenue to the east and Herbert Street to the south.

Anzac Park measures approximately 1.22 hectares with topography falling gently from the west to east as the lowest point. The Park is predominantly characterised by the diagonal pathway axis that splits the Park into four quadrants. The Park is also characterised by the strong avenues of deciduous trees along the main axis pathways, around the north perimeter as well as the dense tree clusters to the north east corner.

The Park features the children’s playground constructed in 2020 to the north east, ANZAC commemorative plaques and flag poles in the centre and open recreation picnic space to the west, south and east. A small amenities building was constructed in 1986/1987 and is located to the north east underneath the dense tree canopies. The Park is known for hosting a number of community events such as the ANZAC Day Ceremony and West Ryde Garden Bar.

In the interest of the community and growing West Ryde population, City of Ryde Council has developed a Masterplan for Anzac Park that will incorporate passive and active recreation.

The Masterplan aims to provide the framework for how the Park will be upgraded over the next 20 years. This strategic plan aims to meet the current and future recreational needs of the community and user groups, while ensuring sustainable and efficient use and ecological outcomes. This Masterplan incorporates the site’s surrounding context, while maximising the Park’s potential for the broader community.

The goals of this Masterplan are to:

- Improve connectivity to the surrounding West Ryde context and town centre
- Improve existing active and passive recreation uses
- Introduce new and exciting active and passive recreation uses including multi-purpose facilities
- Make Anzac Park a hub for community events and recreation within West Ryde
- Identify improvement projects so the Park best services the future needs of the community
- Demonstrate effective future provision, conservation, planning and development of facilities
- Guide Council over the next 20 years on how the park will be upgraded
- Identify stages for implementation which may be suitable for future external grant funding opportunities

Relating Strategic Council Documents

There are a number of strategic documents that provide context in regard to Anzac Park. These documents include:

Draft West Ryde Town Centre Masterplan (2022)

Council is planning for the future of the West Ryde Town Centre by preparing the West Ryde Town Centre Masterplan (draft) to help encourage the rejuvenation of the area into a distinctive, vibrant, and attractive local centre.

The draft West Ryde Town Centre Masterplan includes the following key points which are applicable to Anzac Park:

- One of the objectives of the West Ryde Town Centre Masterplan is to: improve access to and functionality of existing open spaces to maximise their benefit to the local community, including Anzac Park, Darvall Park and the Sydney Water site.
- New developments should be responsive to the desired village character of Ryedale Road to the west and the existing open space characteristics of Anzac Park.
- Anzac Park is considered to be an important existing open space that is to be protected from overshadowing.
- Future active transport and public transport links in immediate vicinity of Anzac Park.

Draft Green Links Masterplan (2021)

Anzac Park sits within the Meadowbank/ West Ryde Precinct as part of the *Draft Green Links Masterplan*. This precinct provides connection between the Parramatta River and Blaxland Road for pedestrians and cyclists. Within the Meadowbank/ West Ryde Precinct the Green Link Shared User Path is proposed along Wattle Street adjacent Anzac Park, running between Hermitage and Ryedale Roads. This Shared User Path will ultimately provide Anzac Park with increased connectivity across the wider City of Ryde local government area.

Integrated Open Space Plan (2012)

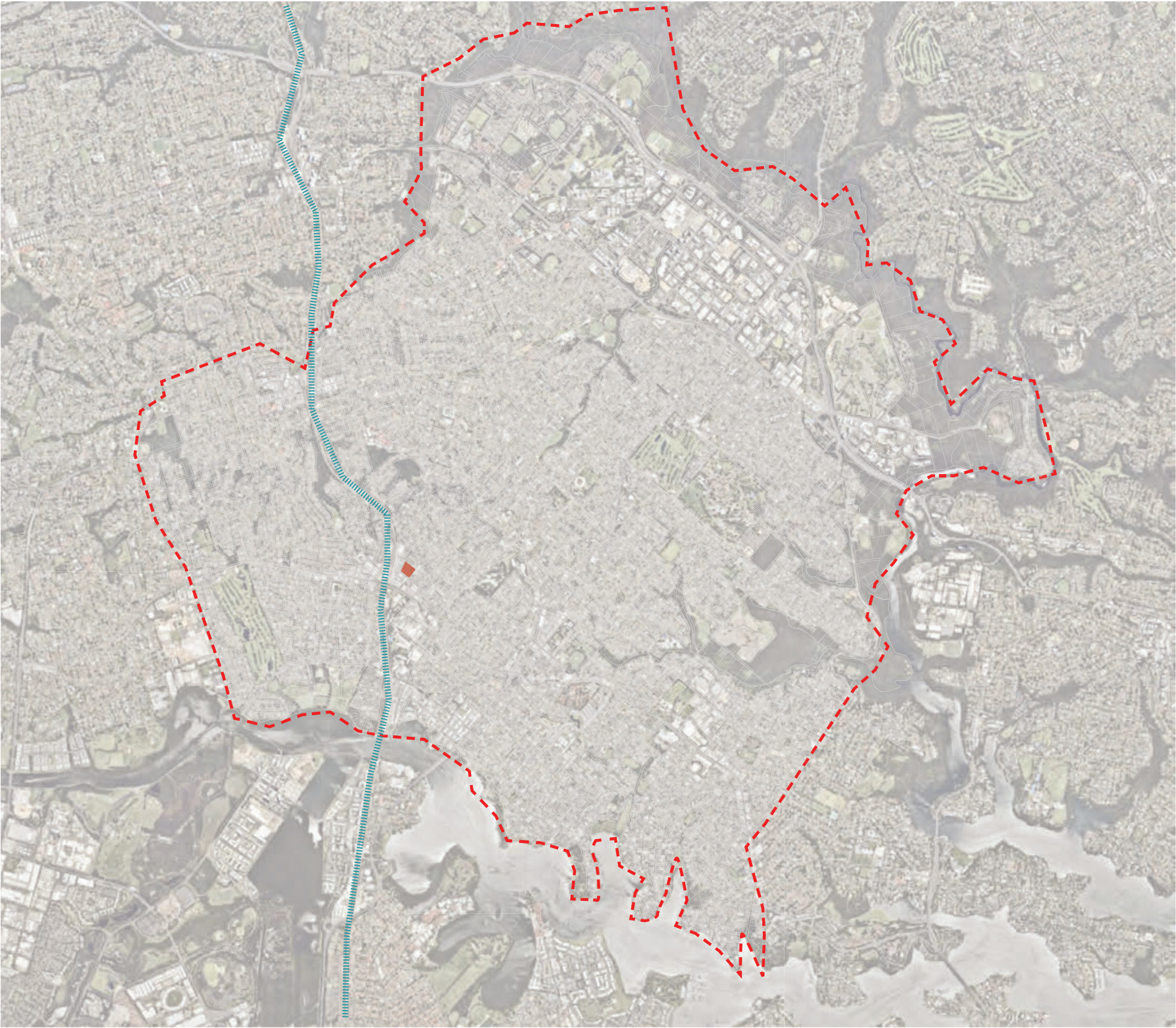
Anzac Park is identified within the *Integrated Open Space Plan* as a Level 3 Open Space within the open space hierarchy between Levels 1 and 4. Level 3 typically represents the 2nd smallest open spaces within City of Ryde, with Level 4 representing the smallest open space areas. Anzac Park as Level 3 attracts a greater level of use, encourage longer stays and contribute to the identity and character of the local area. These spaces also provide convenient access to passive and active recreational opportunities for local residents of all age groups.

Children’s Play Implementation Plan (2019)








2.0 CONTEXT



LEGEND

-  CITY OF RYDE LOCAL GOVERNMENT AREA (LGA) BOUNDARY
-  ANZAC PARK LOCATION
-  TRAIN LINE



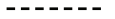





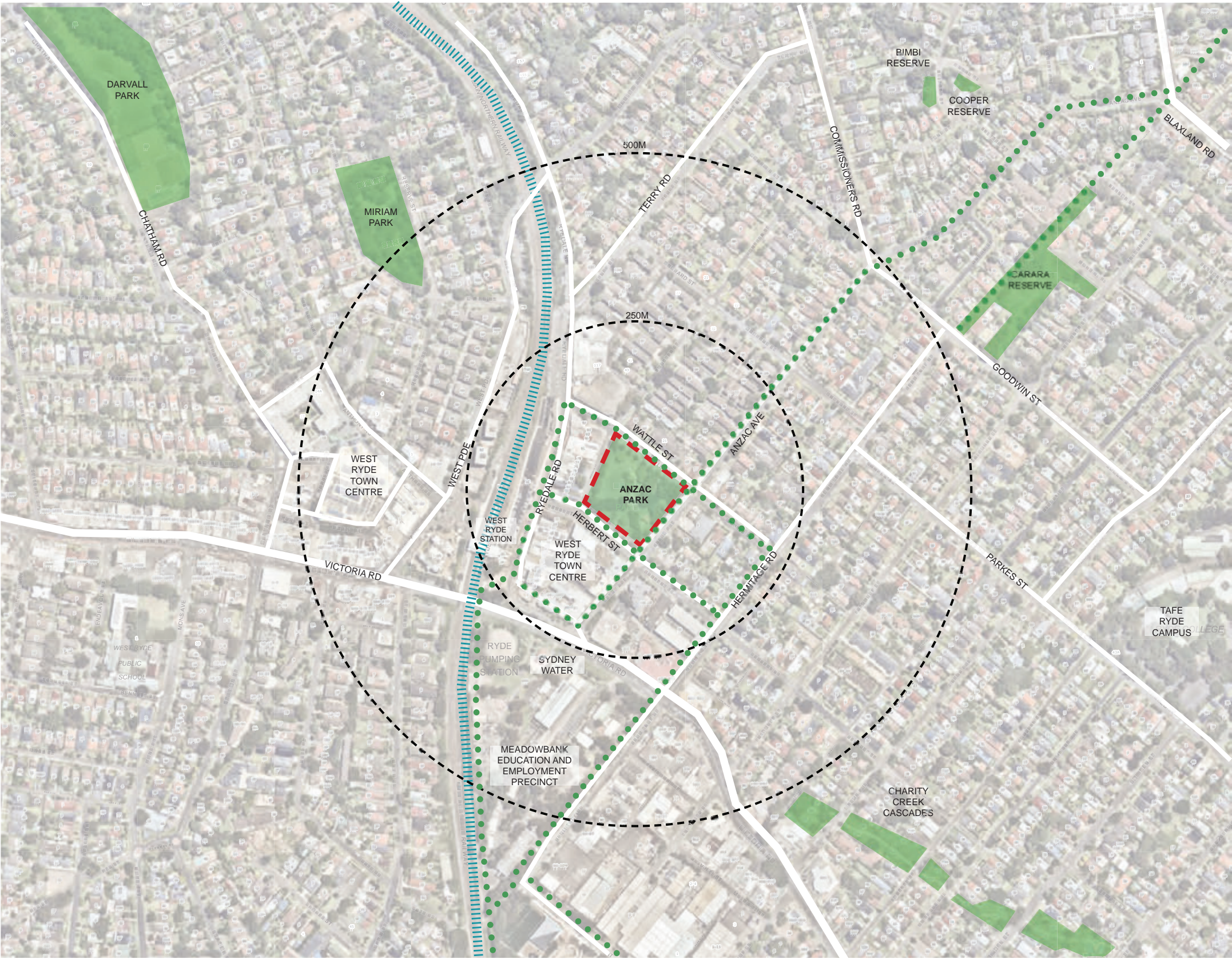
LEGEND

- ANZAC PARK BOUNDARY
- CONTEXT RADIUS
- MAJOR ROAD CORRIDOR
- TRAIN LINE
- FUTURE ACTIVE TRANSPORT ROUTE (REFER GREEN LINKS MASTERPLAN)

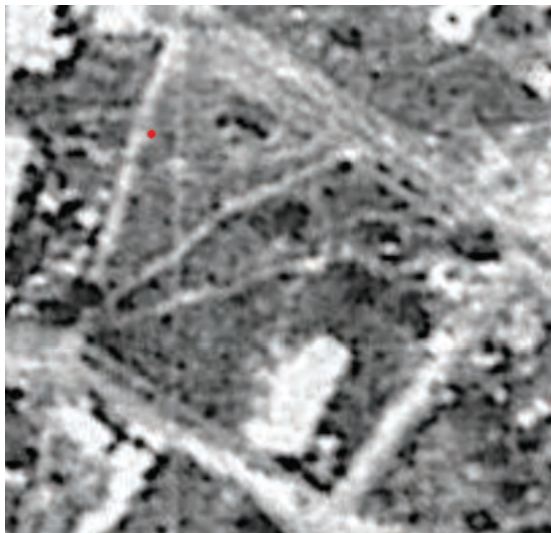


LEGEND

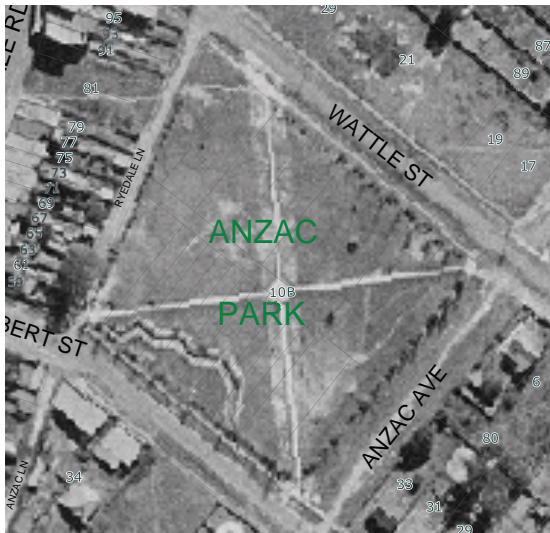
-  ANZAC PARK BOUNDARY
-  SURROUNDING PARKS & RESERVES
-  CONTEXT RADIUS
-  MAJOR ROAD CORRIDOR
-  TRAIN LINE
-  FUTURE ACTIVE TRANSPORT ROUTE (REFER GREEN LINKS MASTERPLAN)







1930 Aerial Photograph¹¹



1943 Aerial Photograph¹¹



1956 Aerial Photograph¹¹



1965 Aerial Photograph¹¹



1978 Aerial Photograph¹¹



1982 Aerial Photograph¹¹



1995 Aerial Photograph¹¹



2006 Aerial Photograph¹¹



2010 Aerial Photograph¹¹

ANZAC PARK HISTORICAL TIMELINE

1919 - First suggestion that a park was needed in West Ryde by Councillors.¹

1926 - Alternative uses for the current site were suggested including bitumen concrete plant.²

1935 - The Parks and Lighting Committee inspected the land in Wattle Street, Herbert Street and Anzac Avenue in February.³

1936 - The Parks & Lighting Committee recommended that the offer to acquire land be approved.⁸ Council needed to forward £1077 to acquire all land with frontage to Herbert, Wattle and Anzac Streets.⁸

1937 – Wattle Street Park becomes Anzac Park. At the meeting of the Parks Committee on 13 March 1937 there were reports presented on a number of parks including the ‘Wattle Street Park’, later decided ‘Anzac Park’.⁹ The committee recommended the following works; fencing, planting of Oleander and Poplar trees, leveling and grassing and pavilion shelter.¹⁰

1938-1943 - Works were undertaken including tree planting and the prominent diagonal pathways. During World War II by 1943 zig-zag slit trenches were constructed along Herbert St due to the fear of air raid attacks during.¹¹ A fake Victoria Road alignment was also put through the Park to confuse enemy aerial bombers.

1956-1961 - Turf netball courts were constructed in north west portion of Anzac Park.¹¹

1965 - Netball Courts were removed.¹¹

1971 - Plans for beautification were prepared including new planting and toilet block adjacent the corner of Herbert and Ryedale Lane (no toilet block was completed).¹¹

1978 - New plans were prepared including car barriers, shrub and tree planting, adventure playground and junior playground as well as entry pergola at the Wattle Street and Anzac Avenue entry.¹¹

1980 - Additional planting, playground, entry pergola and lighting completed.¹¹

1986-1987 - Current toilet block constructed.¹¹

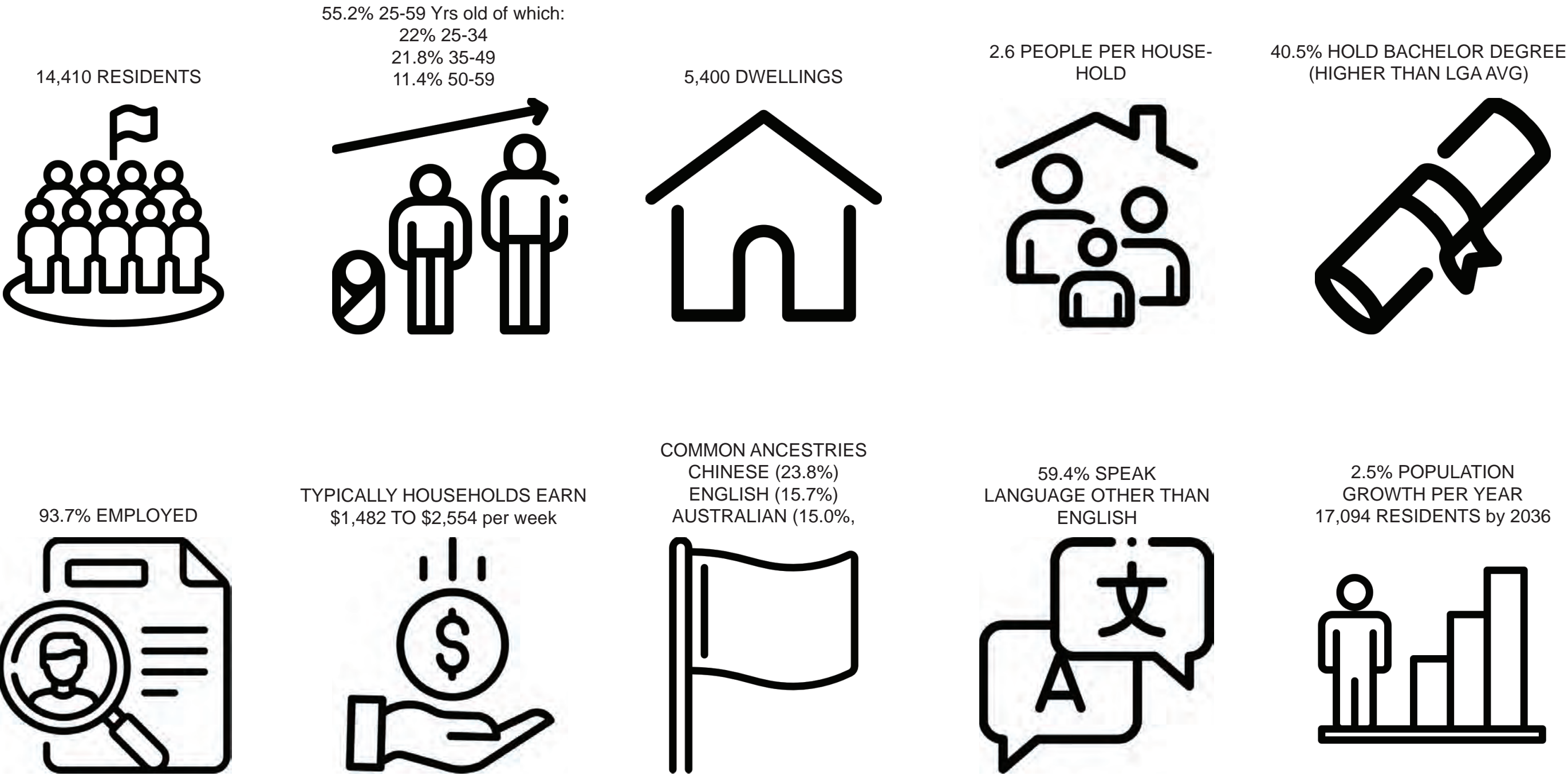
2003 - Upgrade works were undertaken including additional pathways, BBQs, formalised garden beds with planting, playground relocation to adjacent Anzac Avenue and new park furniture.¹¹

2018 - In respect to Centenary of ANZAC Day (2018), commemorative plaques were installed in the central garden bed.¹¹

2019-2020 – Council’s Heritage Review in 2019 identified Anzac Park as “Heritage Item”. The Heritage Review Planning Proposal went through extensive community consultation in September – November 2019 and reported to Council on 12 December 2019. The Ryde Local Environment Plan (2014) was amended on 27 November 2020 to incorporate the new heritage items/areas, including Anzac Park.

2021/2022 - Anzac Park Masterplan prepared.

WEST RYDE DEMOGRAPHICS



(Australian Bureau of Statistics, 2016)¹²



3.0 SITE ANALYSIS

SITE CHARACTER



ANZAC MEMORIAL



DECIDUOUS TREES
FORMAL PLANTING



OPEN SPACE



DISTRICT LEVEL PLAY-
GROUND & DENSE TREE
CANOPIES



STRUCTURED
PATHWAYS



LEGEND

- SITE BOUNDARY
- MAJOR PEDESTRIAN MOVEMENT
- MINOR PEDESTRIAN MOVEMENT
- ↔ LEVEL (ACCESSIBLE) ENTRY/ EXIT POINTS
- ↔ ENTRY AT GRADE
- ↔ MOVEMENT ACROSS PATHWAY
- //// PEDESTRIAN CROSSINGS
- PEDESTRIAN ISLAND REFUGE
- B BUS STOP
- P CAR PARKING



LEGEND

- SITE BOUNDARY
- ↔ FORMAL ENTRY/ EXIT POINTS
- STRUCTURED RECREATION
- OPEN RECREATION
- AMENITIES
- ANZAC MEMORIAL



LEGEND

- SITE BOUNDARY
- SOLAR MOVEMENT
- WIND MOVEMENT
- VEGETATION
- 1:100 FLOODING
- SLOPING TOPOGRAPHY



LEGEND

— SITE BOUNDARY

ELEMENTS OF SITE SIGNIFICANCE

ELEMENTS OF HERITAGE AND CULTURAL SIGNIFICANCE



LEGEND

SITE BOUNDARY

INCREASED INTERNAL PARK CONNECTIVITY

INCREASE EXTERNAL PARK CONNECTIVITY

INCREASE ACTIVATION

OPPORTUNITY TO WORK WITH TOPOGRAPHY/ SLOPE

VIEW VANTAGE POINT

INCREASE PLANTING/ TREE CANOPY

EXTENSION TO PLAYGROUND

FORMALISED COMMUNITY EVENT SPACE

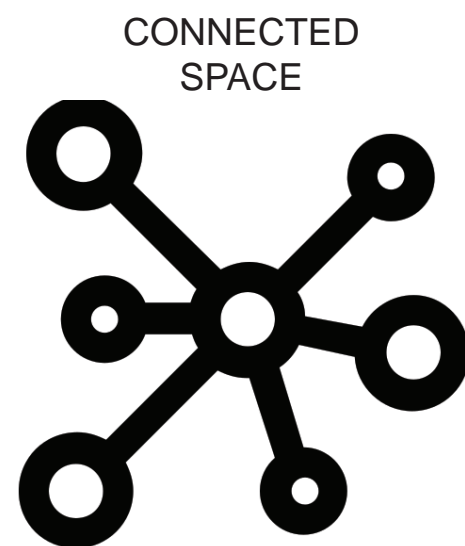
POOR VISIBILITY INTO PARK

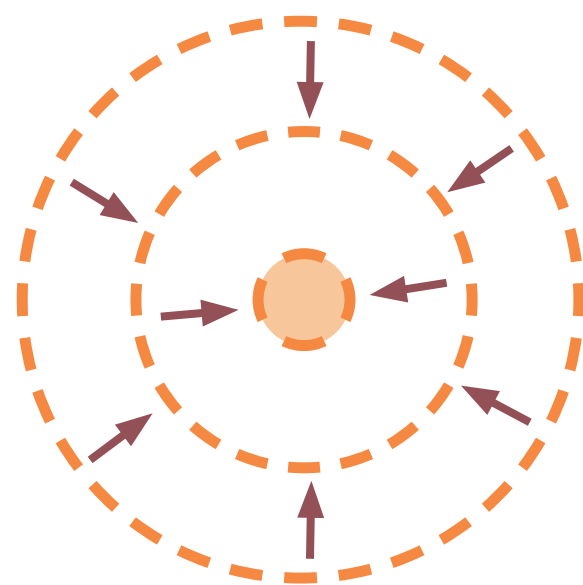
SHARED ZONE (REAR ACCESS RETAINED)

FUTURE ACTIVE TRANSPORT ROUTE (REFER GREEN LINKS MASTERPLAN)

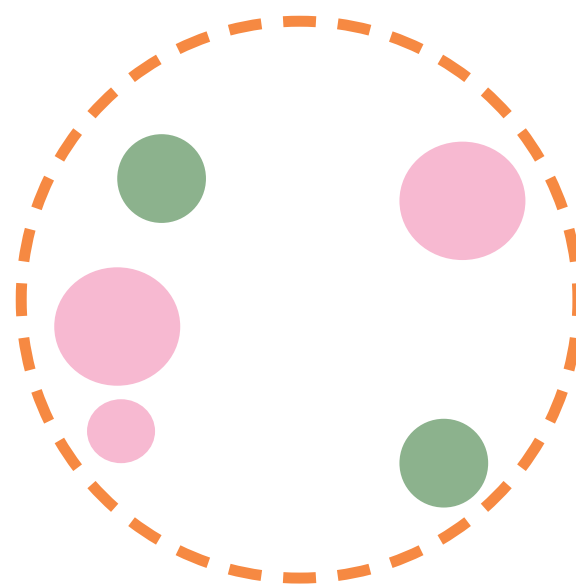


4.0 DESIGN STRATEGY

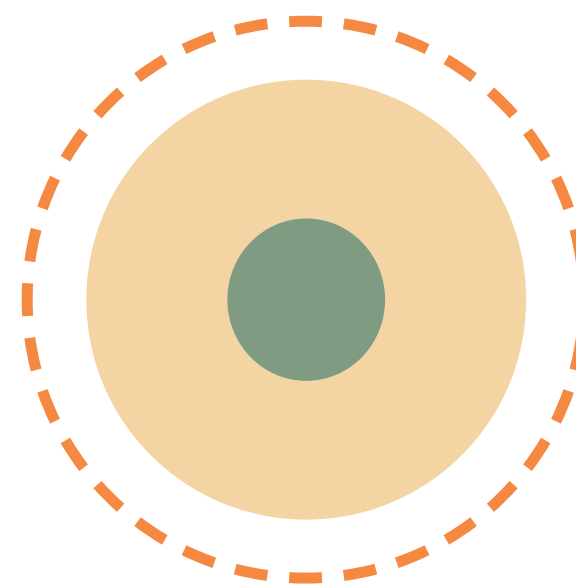




ACTIVATION OF
PARK CORE



DESIGNATED ACTIVE
& PASSIVE RECREATIONAL
ZONES



TOWNCENTRE PARK
AS 'URBAN OASIS'
AND REFUGE



LEGEND

SITE BOUNDARY

PARK ENTRY/ EXIT POINTS

PLAY ZONE

SHELTER/ BBQ

ACTIVE RECREATION

COMMUNITY EVENTS ZONE

LANE WY ACTIVATION / SHARED ZONE

ANZAC MEMORIAL

AMPHITHEATRE

REFLECTION SPACE/ HISTORIC INTERPRETATION

PICNIC SPACE

ACTIVE RECREATION/ EVENTS

SENIOR ACTIVITIES

FITNESS ZONE

PASSIVE REFLECTION

PROPOSED AMENITIES BUILDING



LEGEND

- SITE BOUNDARY
- ↔ PARK ENTRY EXIT
- MAJOR PEDESTRIAN MOVEMENT
- MINOR PEDESTRIAN MOVEMENT
- ↔ MOVEMENT ACROSS PATHWAY
- //// PEDESTRIAN CROSSING
- PEDESTRIAN REFUGE ISLAND
- B BUS STOP
- P CAR PARKING



LEGEND

SITE BOUNDARY

PARK ENTRY EXIT

MAJOR PEDESTRIAN
MOVEMENT (OUTSIDE
PARK)

MAJOR PEDESTRIAN
MOVEMENT (WITHIN
PARK)

MINOR PEDESTRIAN
MOVEMENT

PEDESTRIAN
CROSSING

PEDESTRIAN REFUGE
ISLAND

B

BUS STOP

P

CAR PARKING



LEGEND

SITE BOUNDARY

Existing
Platanus acerifolia

Existing
Fraxinus raywoodii

Existing
Celtis australis

Existing
Lophostemon confertus

Existing
Jacaranda mimosifolia

Proposed
Fraxinus raywoodii

Proposed
Platanus acerifolia

Proposed
WSUD Swale

NOTE:

Preliminary tree assessment was conducted in the preparation of this Masterplan.

Some existing trees, especially along the axis paths, are likely to reach senescence and exceed their maximum natural lifespan within coming 20 years.

A succession plan for progressive replacement plantings is to be developed based on formal assessment of tree conditions:

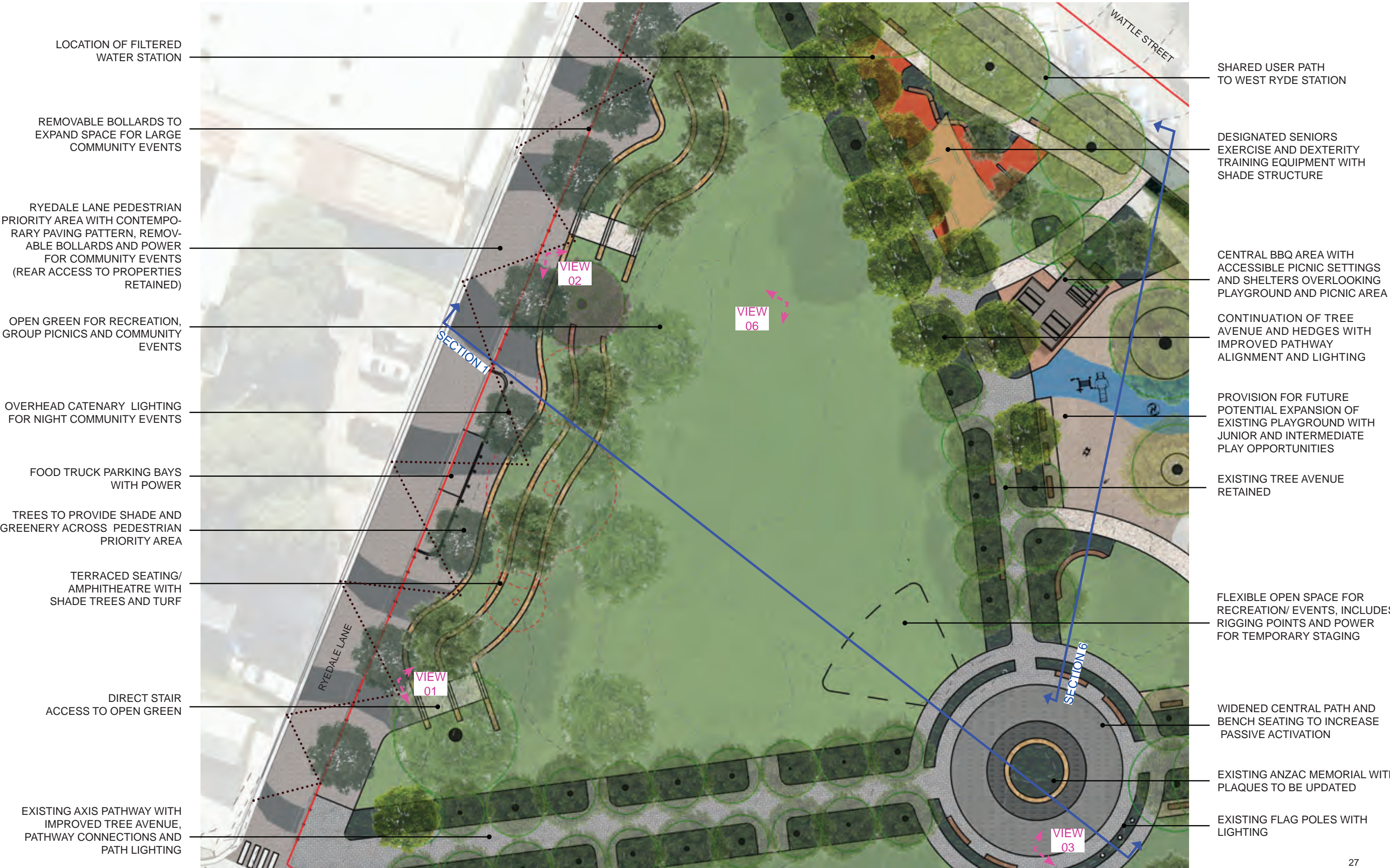
- * High priority for replacement (1-5 years)
- * Medium priority for replacement (6-10 years)
- * Low priority for replacement (11-20 year)
- * Ongoing - Replacement not required.

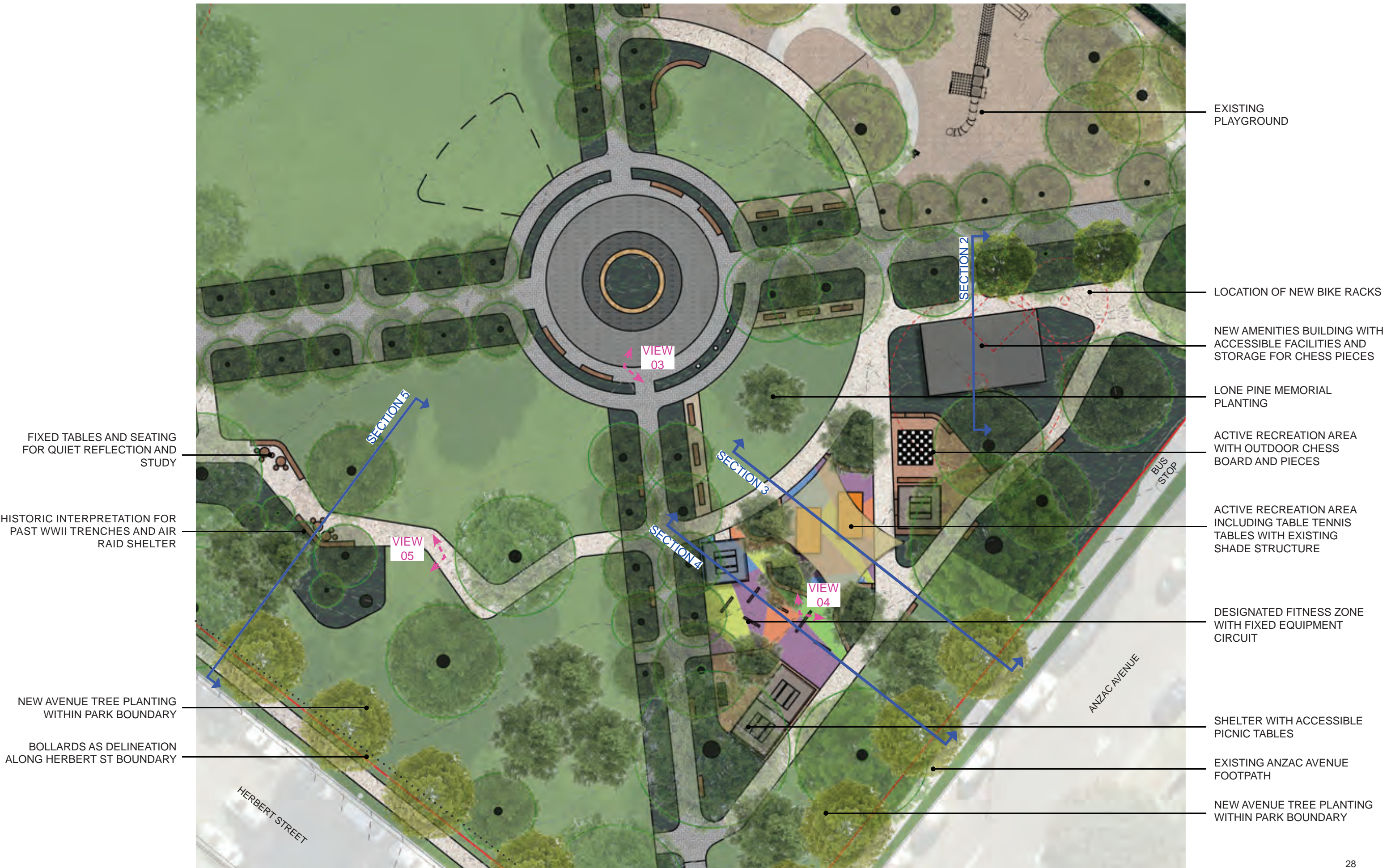


5.0 MASTERPLAN



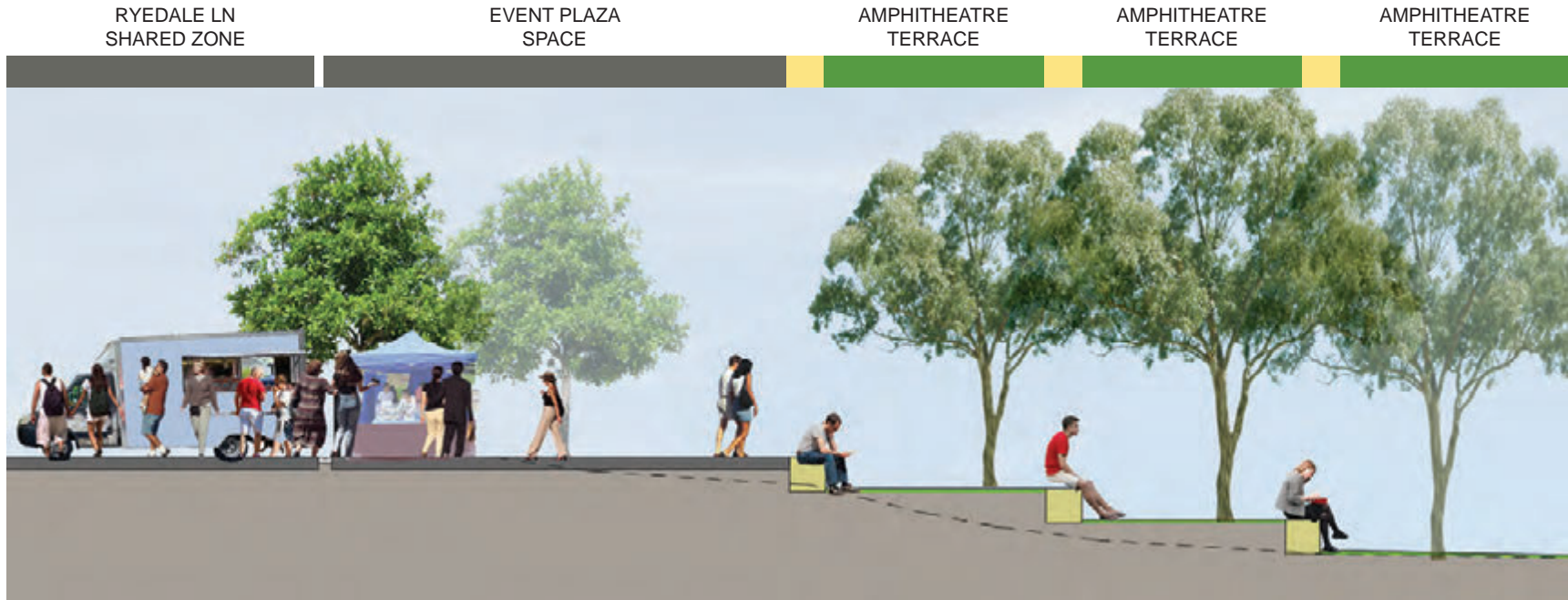
- LEGEND**
1. Existing ANZAC memorial with plaques to be updated
 2. Widened circular path with bench seating and memorial planting
 3. Flexible open space for recreation/ events, including rigging and power for temporary event staging
 4. Flag Poles with lighting
 5. Terraced seating amphitheatre with shade trees and turf
 6. Open green for recreation, group picnics and community events
 7. Ryedale Lane pedestrian priority area with contemporary paving pattern, removable bollards and power for community events (rear access to properties retained)
 8. Ryedale Lane pedestrian priority area with food truck parking bays and power
 9. Seniors exercise and dexterity equipment with shade structure
 10. BBQ and picnic shelters with accessible picnic settings
 11. Provision for future potential expansion of playground with junior and intermediate play opportunities
 12. Existing playground
 13. New amenities building with accessible facilities, storage for chess pieces and bike racks adjacent
 14. Active recreation area including outdoor chess board and table tennis tables with shade structure
 15. Fitness equipment zone
 16. Picnic and reflection area for smaller groups
 17. Fixed seating, tables for reflection and quiet study, with historic interpretation for past WWII trenches and air raid shelter
 18. Continuation of tree avenue with improved pathway alignment, hedges and lighting
 19. Existing tree avenue and hedges with improved pathway connections and path lighting
 20. Shared User Path
 21. On-Street parking with accessible parking spaces
 22. New avenue tree planting within park boundary







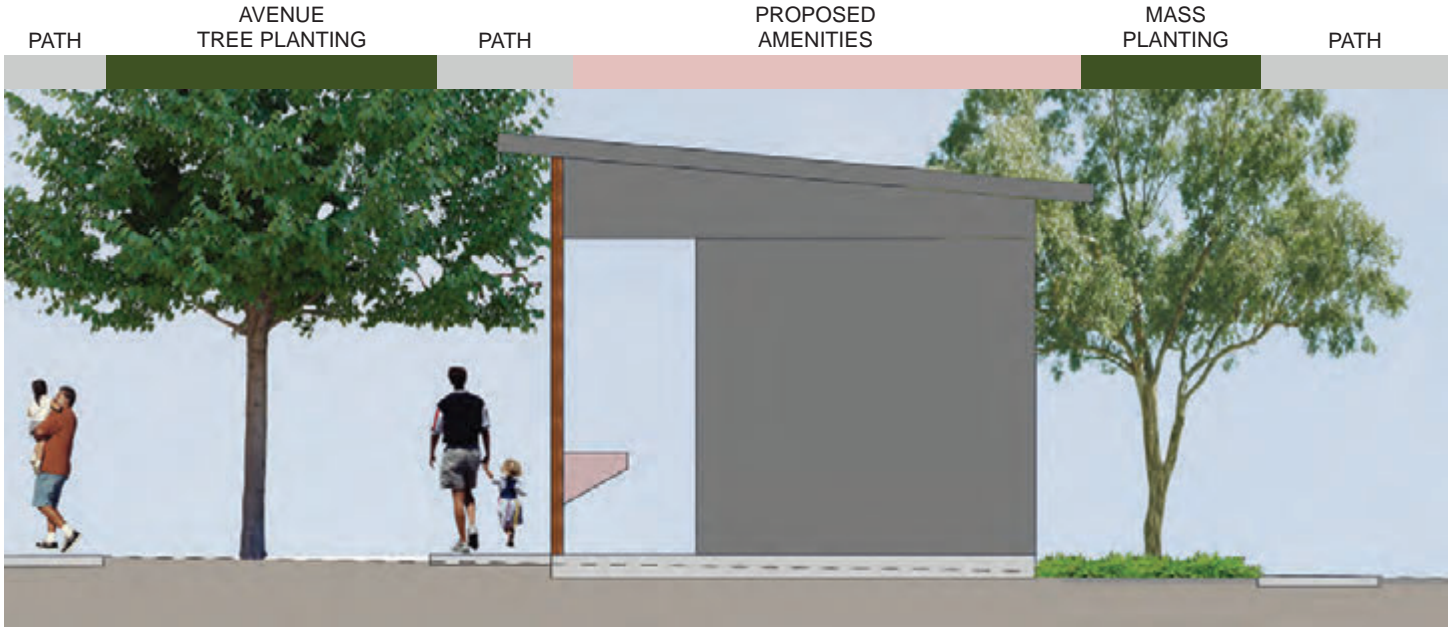
SECTION 01
SCALE 1:200 @A3



SECTION 01-A
SCALE 1:100 @A3



SECTION 01-B
SCALE 1:100 @A3



SECTION 02
SCALE 1:100 @A3



SECTION 03
SCALE 1:100 @A3



SECTION 04
SCALE 1:100 @A3



SECTION 05
SCALE 1:100 @A3



SECTION 06
SCALE 1:100 @A3

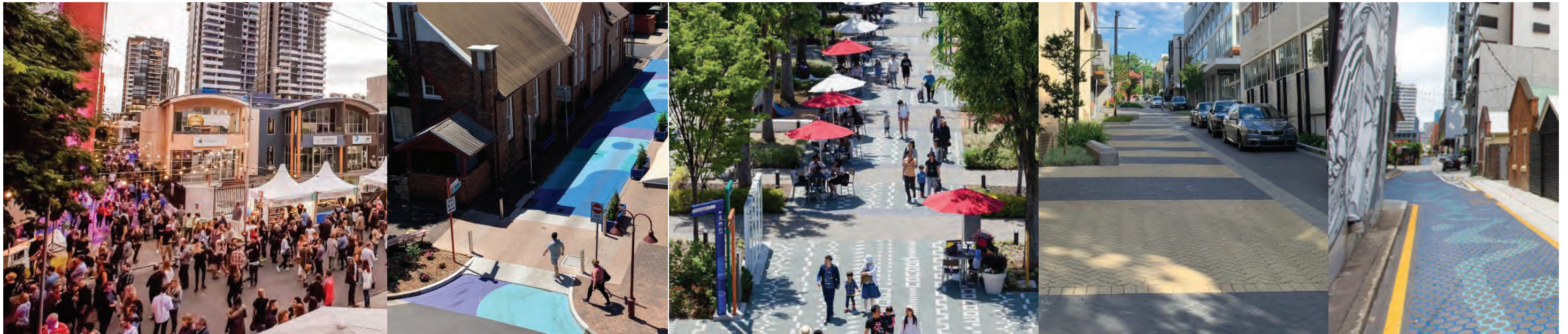
PICNIC AND EVENT SPACE



AMPHITHEATRE & TEMPORARY STAGE



SHARED ZONE & PLAZA SPACE



AMENITIES BUILDING



GAMES AND FITNESS AREA



SENIORS EXERCISE EQUIPMENT



REFLECTION & STUDY SPACE



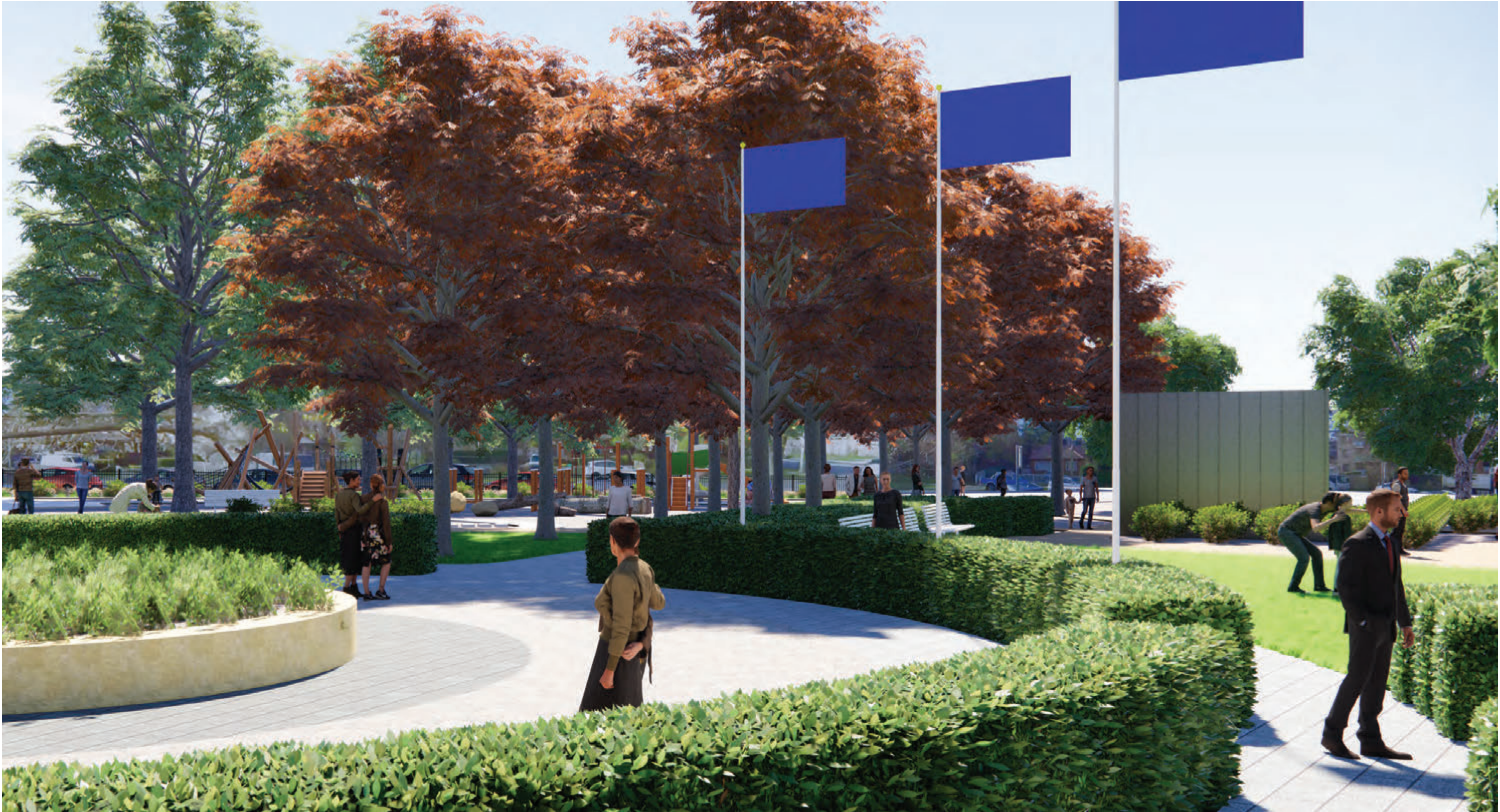
GENERAL PARK FURNITURE



(INDICATIVE SELECTIONS)













TREES



Fraxinus raywoodii
(Claret Ash)



Lophostemon confertus
(Brush Box)



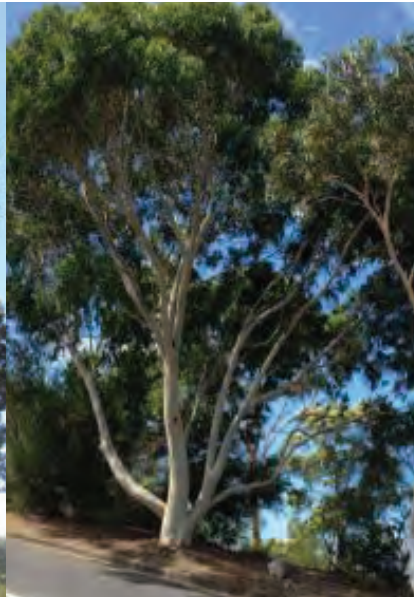
Brachychiton populneus
(Qld Bottle Tree)



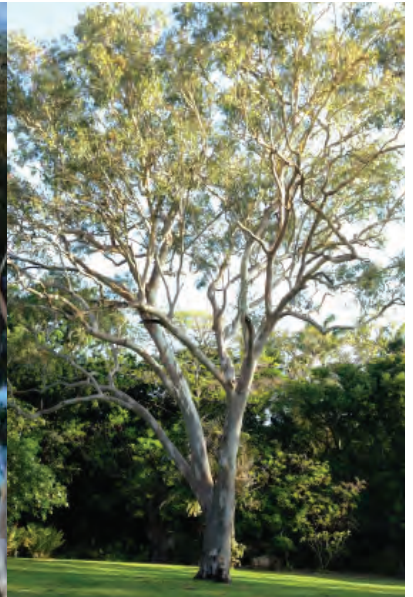
Platanus acerifolius
(London Plane Tree)



Eucalyptus fibrosa
(Red Ironbark)



Eucalyptus haemastoma
(Scribbly Gum)



Eucalyptus tereticornis
(Forest Red Gum)



Pistacia chinensis
(Chinese Pistache)



Pinus brutia
(Lone Pine Tree)

SHRUBS



Buxus microphylla japonica
(Japense Box)



Rosmarinus officinalis
(Rosemary)



Nandina domestica
'Gulf Stream'
(Nandina)



Callistemon viminalis 'Better John'
(Dwarf Callistemon)

GRASSES & GROUNDCOVERS



Liriope muscari 'Just Right'
(Giant Liriope)



Trachelospermum jasminoides
(Stair Jasmine)



Myoporum parvifolium
(Creeping Boobialla)

WSUD STORMWATER
DETENTION



Ficinia nodosa
(Knobby Club Rush)

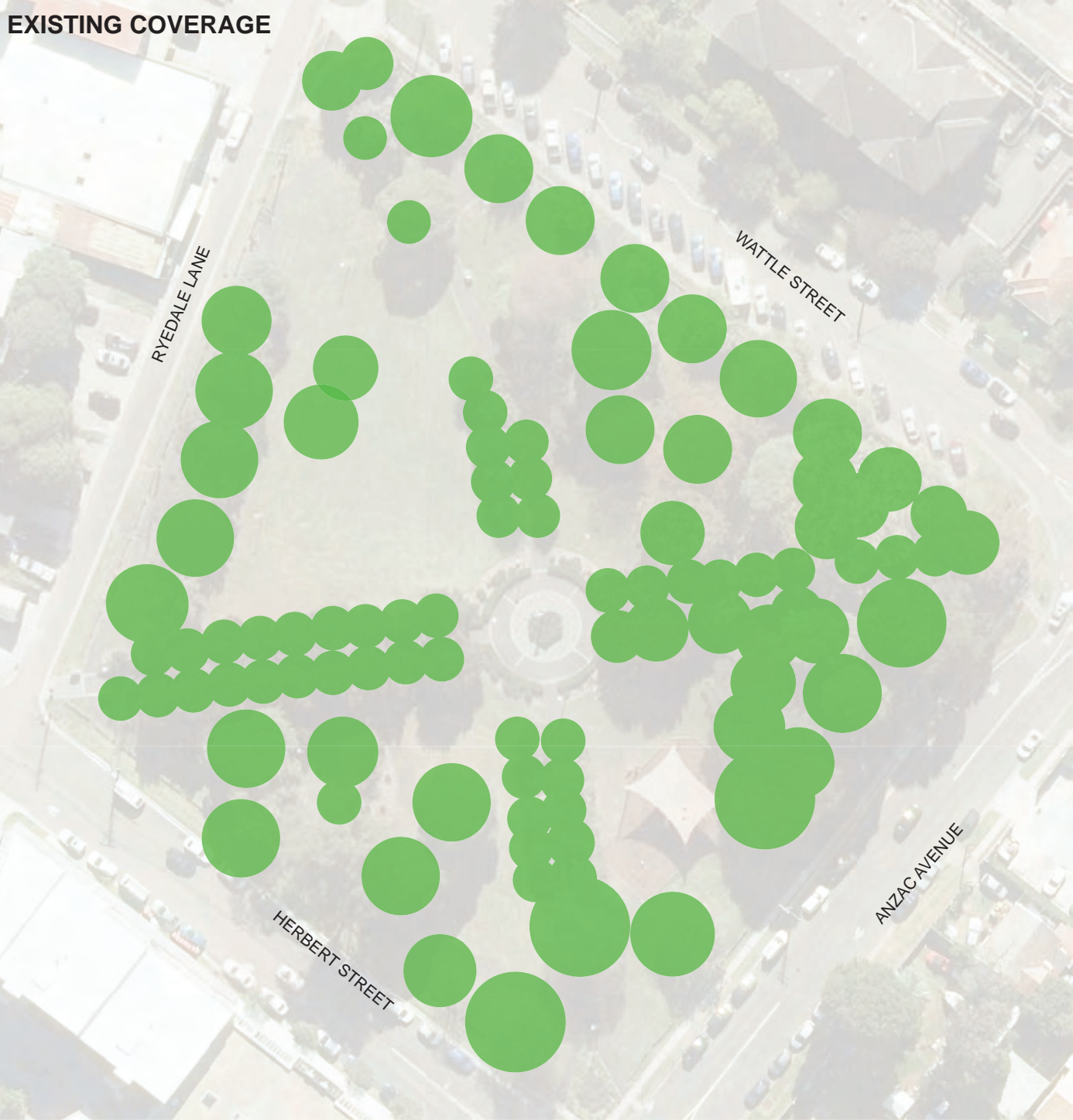


Imperata cylindrica
(Cogon Grass)



Carex appressa
(Club Rush)

EXISTING COVERAGE



PLANTING PRINCIPLES

- Continue and enhance avenue tree planting on axis pathways
- Avenue tree planting to Herbert Street and Anzac Avenue frontages
- Native evergreen tree planting within passive and active zones for shade and greenery
- Deciduous trees along axis pathways and frontages to provide character and solar access











PROPOSED COVERAGE



APPROXIMATE CANOPY CALCULATIONS

Existing 37% of overall site
Proposed 59% of overall site area



- LEGEND**
-  PARK ENTRY EXIT
 -  MAJOR PEDESTRIAN MOVEMENT
 -  MINOR PEDESTRIAN MOVEMENT
 -  FUTURE ACTIVE TRANSPORT ROUTE (REFER GREENLINKS MASTERPLAN)
 -  PEDESTRIAN CROSSING
 -  PEDESTRIAN REFUGE
 -  BUS STOP
 -  CAR PARKING
 -  ACCESSIBLE PARKING
 -  CAR SHARE PARKING



LEGEND

- MAJOR PATHWAY POST TOP LIGHTING
 - MINOR PATHWAY POST TOP LIGHTING
 - AMPHITHEATRE POST LIGHTING
 - FLAG POLE UP LIGHTING
 - ⋯ CATENARY OVER-HEAD LIGHTING
 - STRIP LIGHTING IN AMPHITHEATRE WALLS
 - SHELTER AND AMENITIES LIGHTING
 - 'FAIRY' LIGHTING UP TREE TRUNKS
- (LOCATIONS SHOWN ARE CONCEPTUAL ONLY)

NOTE:

Existing CCTV on-site to be upgraded to digital platform. Locations for cameras, poles and camera angles to be reviewed to ensure appropriate coverage and sight lines are achieved for the current park layout and future park configurations as the Masterplan is progressively implemented.



STAGING

- Stage 1**
- Demolition of existing amenities building
 - New amenities building
 - Shelters & BBQ
 - Bike Racks
 - Circulation pathways and lighting
 - Fitness circuit
 - Table tennis tables
 - Outdoor chess board
 - Furniture and fixtures
 - Tree planting
 - Undergrounding of Anzac Street powerlines

- Stage 2**
- Main circulation pathways and lighting
 - Widened central pathway
 - Recreation/ temporary stage area
 - Tree planting
 - Upgrade flag poles
 - ANZAC Memorial and plaques to upgraded

- Stage 3**
- Ryedale Lane shared zone and lighting
 - Plaza space
 - Amphitheatre
 - Tree planting
 - Circulation pathways
 - Undergrounding of Ryedale Lane powerlines

- Stage 4**
- Playground extension
 - BBQ and Picnic Shelters
 - Pathways and lighting
 - Senior exercise and dexterity equipment
 - Shade structure above exercise equipment

- Stage 5**
- Passive recreational zone
 - Seating and study zone
 - Historical interpretation zone
 - Circulation pathways and lighting
 - Tree planting
 - Undergrounding of Herbert Street powerlines
 - Park delineation bollards/ fence

- Stage 6**
- Green Links Shared User Path (Green Links Masterplan)
 - Undergrounding of Wattle Street powerlines

- Other/Ongoing**
- CCTV review and upgrade
 - Tree assessments and succession plan for progressive replacement plantings (if/as required)
 - Pedestrian crossings in adjoining local streets.

References

¹Minutes of Ordinary meeting 5 December 1919
²M C I Levy, Wallumetta: a history of Ryde and its districts. 1792 to 1945, p.246
³Parks & Lighting Committee Report 2 February 1935
⁴Parks & Lighting Committee Report 30 March 1935
⁵Parks & Lighting Committee Report 1 June 1935
⁶Parks & Lighting Committee Report 1 June 1935
⁷Parks & Lighting Committee Report 6 November 1935
⁸Parks & Lighting Committee Report 16 May 1936
⁹Parks Committee Report 13 March 1937
¹⁰Parks Committee Report 13 March 1937
¹¹Anzac Park West Ryde Background and History, A. Phippen, 2021

