



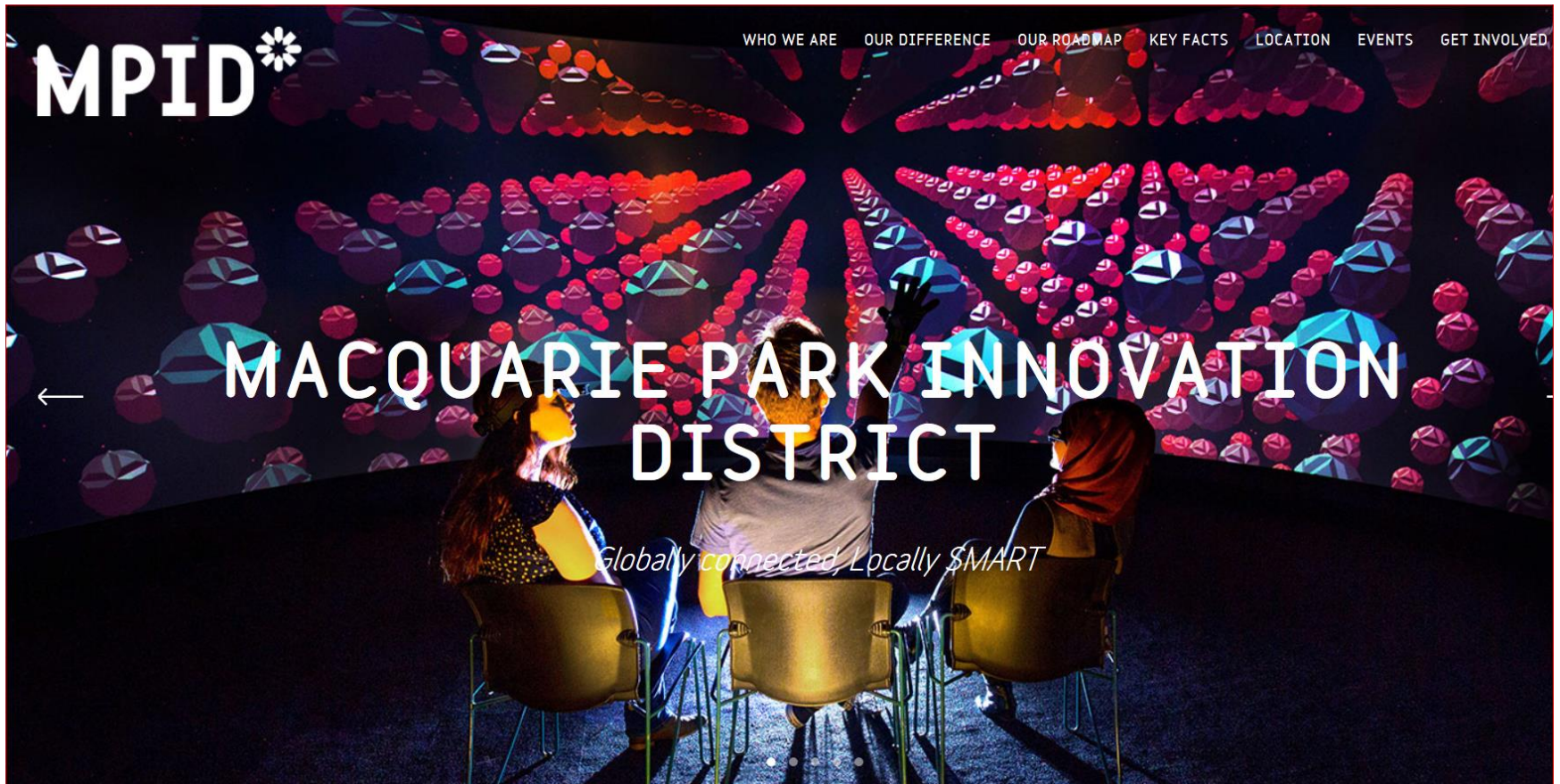
Macquarie Park Forum

3 November 2016

Agenda

- Welcome
- Macquarie Park Innovations District
- Sydney Metro – North West Stage 1
- Strategic Review - Macquarie Park
- Macquarie Park Car Parking
- Night Time Economy – project update
- Connect Macquarie Park +North Ryde
- General Business

Macquarie Park Innovation District



Sydney Metro – NWRL project



Sydney Metro

Australia's biggest public transport project

Transport for NSW – Infrastructure & Services

Macquarie Park Forum
4 November 2016

Daniel Cavallo – Director, Metropolitan Bus and Ferry Planning

Bus services for Macquarie Park

- Bus services are provided from across Sydney to the Macquarie Park area, including the Lower North Shore, Inner West, Northern Beaches, Western Sydney and North West Sydney
- Around 1,400 extra weekly bus services since 2011 to improve access to Macquarie Park, responding to customer demand and growth in the area
- 2016/17 Growth Services Program includes improvements to Routes M41 (Hurstville), 197 (Mona Vale), 292 (Marsfield), 506 (East Ryde), 518 (Top Ryde), 611 (Blacktown), 619 & 621 (Castle Hill) and 740 (Stanhope Gardens)



Sydney Metro

Macquarie Park Forum

4 November 2016



Jane Richardson | Director, Project Integration

Overview

1. Introduction and Context
2. Sydney Metro Overview & Update
3. Epping to Chatswood Conversion and Upgrade
4. Q&A



“

the customer
is at the

centre

of everything we do at

transport

”



KEY

- Sydney Metro Northwest – open 2019
- Sydney Metro City & Southwest alignment
- Upgrade and conversion to metro rail
- Sydney Trains suburban network

More than 65 km stand alone line

31 metro railway stations

Stage 1 – open 2019
train every 4 minutes

Stage 2 – open 2024
ultimate capacity – every 2 minutes



DURAL

Cudgong Road

Rouse Hill

Kellyville

Bella Vista

Showground

Norwest

Castle Hill

Cherrybrook

M7 Motorway

BLACKTOWN

M2 Motorway

Epping

Macquarie University

Macquarie Park

North Ryde

Chatswood

RYDE

Crows Nest

Victoria Cross

Barangaroo

Martin Place

Pitt Street

Central

Waterloo

LIDCOMBE

M4 Motorway

Bankstown

Lakemba

Belmore

Campsie

Canterbury

Hurlstone Park

Marrickville

Dulwich Hill

Sydenham

Punchbowl

Wiley Park

Sydney Metro Benefits



Allowing people to travel from one key centre to another in minutes



Improving access to jobs, education and recreation



Ultimate capacity
a train every two minutes under the CBD and an increase of up to 60 per cent across the wider network



Reduce crowding on trains, stations and platforms



Encouraging greater commercial development and job creation along the global economic corridor and west to Bankstown



Enabling housing and employment growth along the Global Economic Corridor and west to Bankstown

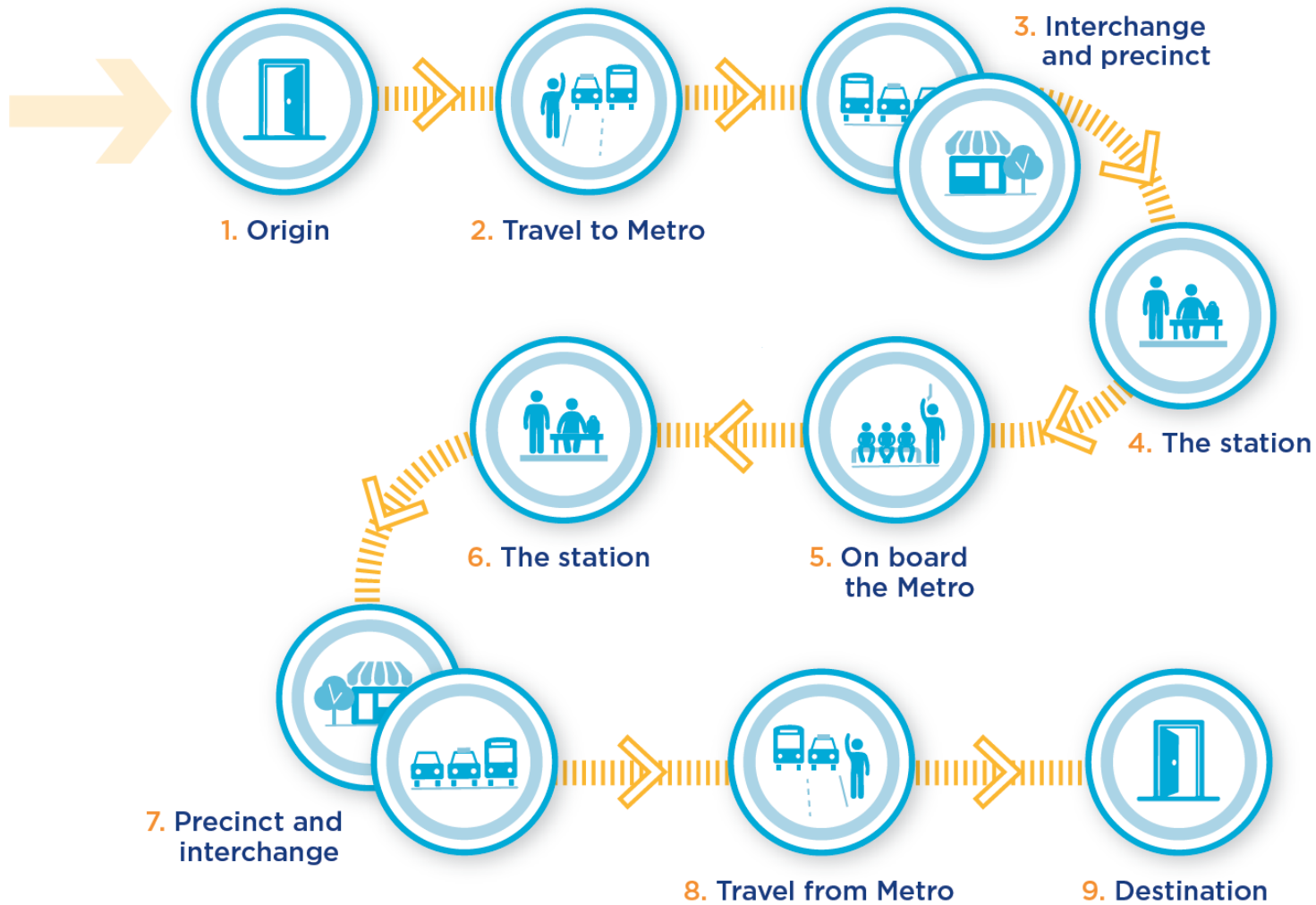


Stand-alone line
operating independently of the existing rail network, not subject to wider suburban delays

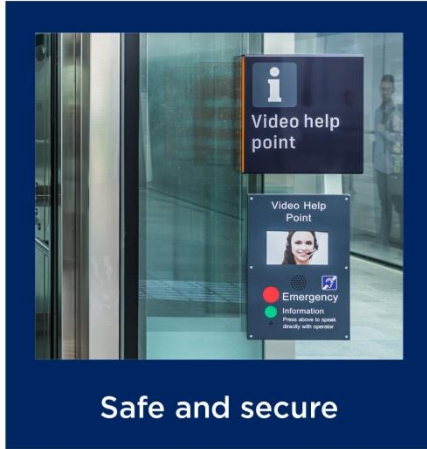


Connecting Sydney's economic centres with a boost of activity up to \$5 billion per year

The customer journey



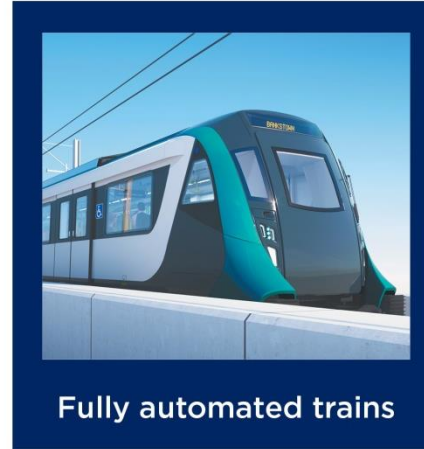
Customer Experience



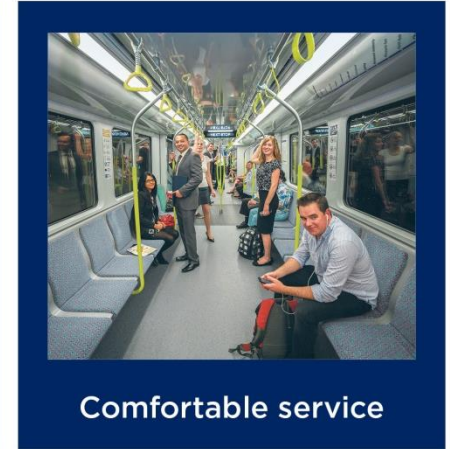
Safe and secure



Highly legible



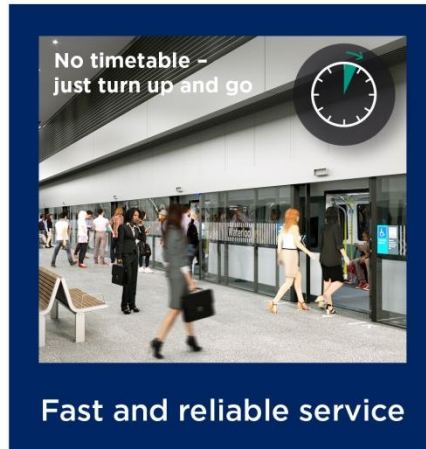
Fully automated trains



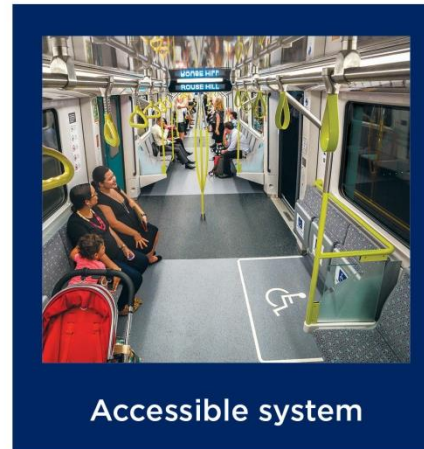
Comfortable service



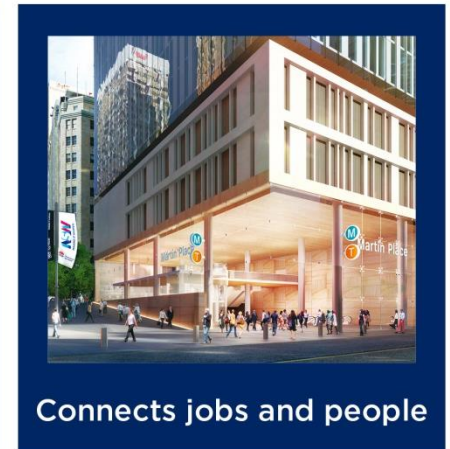
Move more people



Fast and reliable service



Accessible system



Connects jobs and people

Cudgegong Road

Rouse Hill

Kellyville

Bella Vista

Norwest

Showground

Castle Hill

Cherrybrook

**UNDER
CONSTRUCTION**

Epping

Macquarie University

Macquarie Park

North Ryde

Chatswood



Stage 1 – 36km

Open first half of 2019

8 new stations; 5 upgraded

4,000 car spaces

Legend

-  Sydney Metro Northwest alignment (tunnel)
-  Sydney Metro Northwest alignment (skytrain)
-  Sydney Metro City & Southwest alignment

DURAL

WAHROONGA

PARRAMATTA

RYDE

LIDCOMBE

DRUMMOYNE

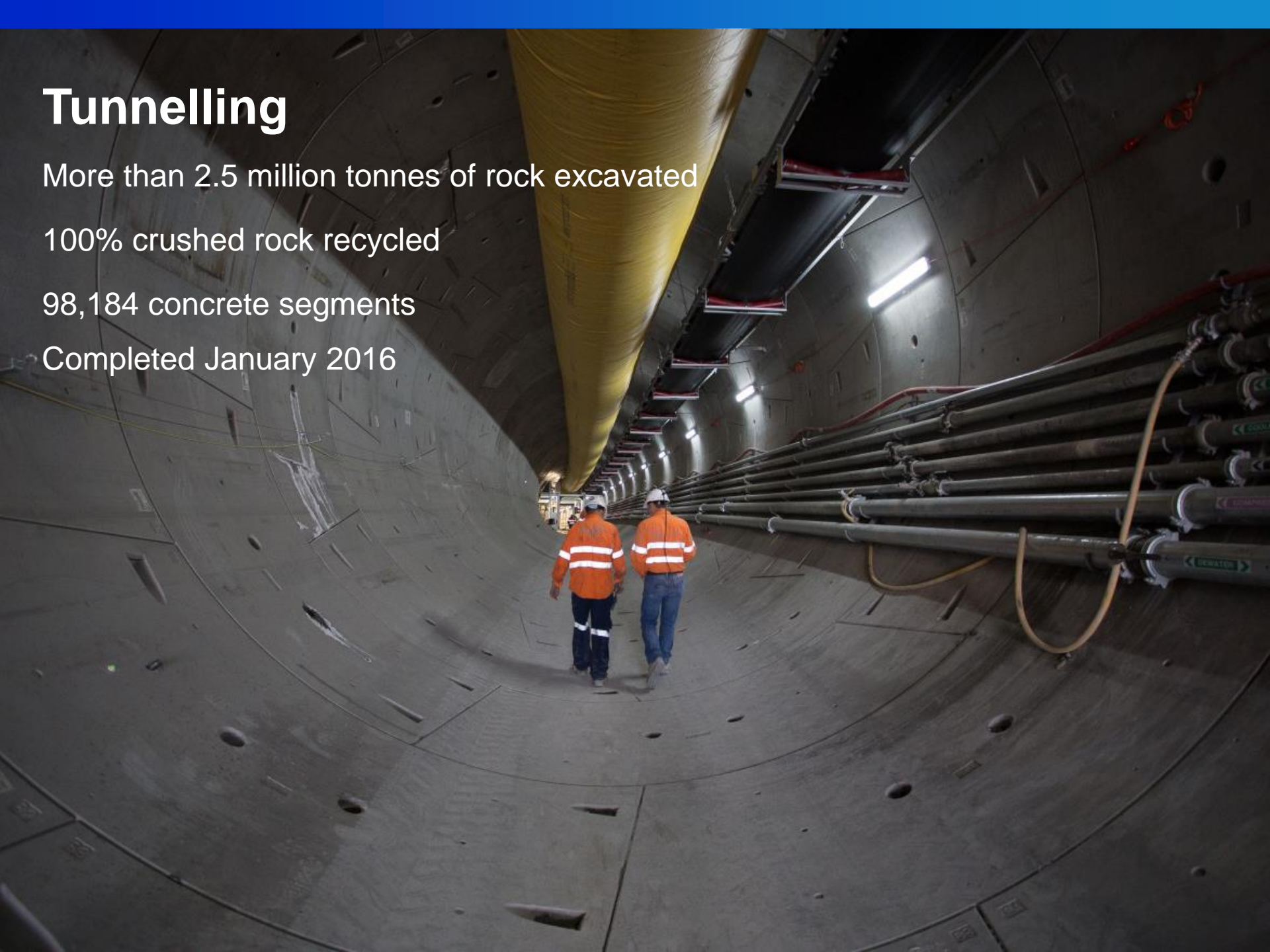
Tunnelling

More than 2.5 million tonnes of rock excavated

100% crushed rock recycled

98,184 concrete segments

Completed January 2016



Skytrain

121 piers
1,200 segments
124 spans

State of the art launch gantries
from Dubai

Gantries to lift segments into
place – enabling main arterial
roads to remain open during
construction

Rouse Hill Station



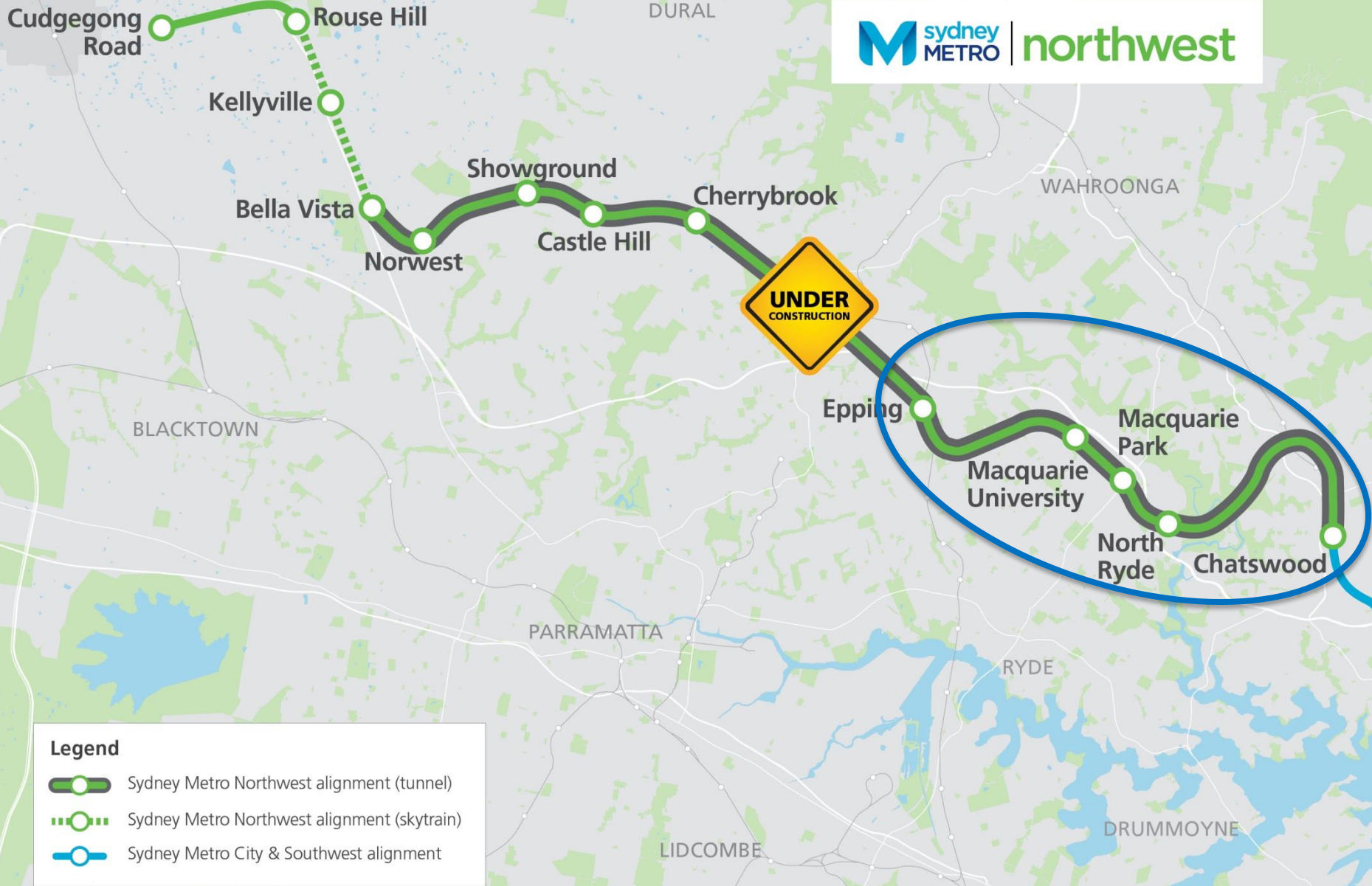
Sydney Metro Trains Facility



Epping to Chatswood railway



Epping to Chatswood Railway



Epping to Chatswood Railway

Key features of the Metro conversion include:

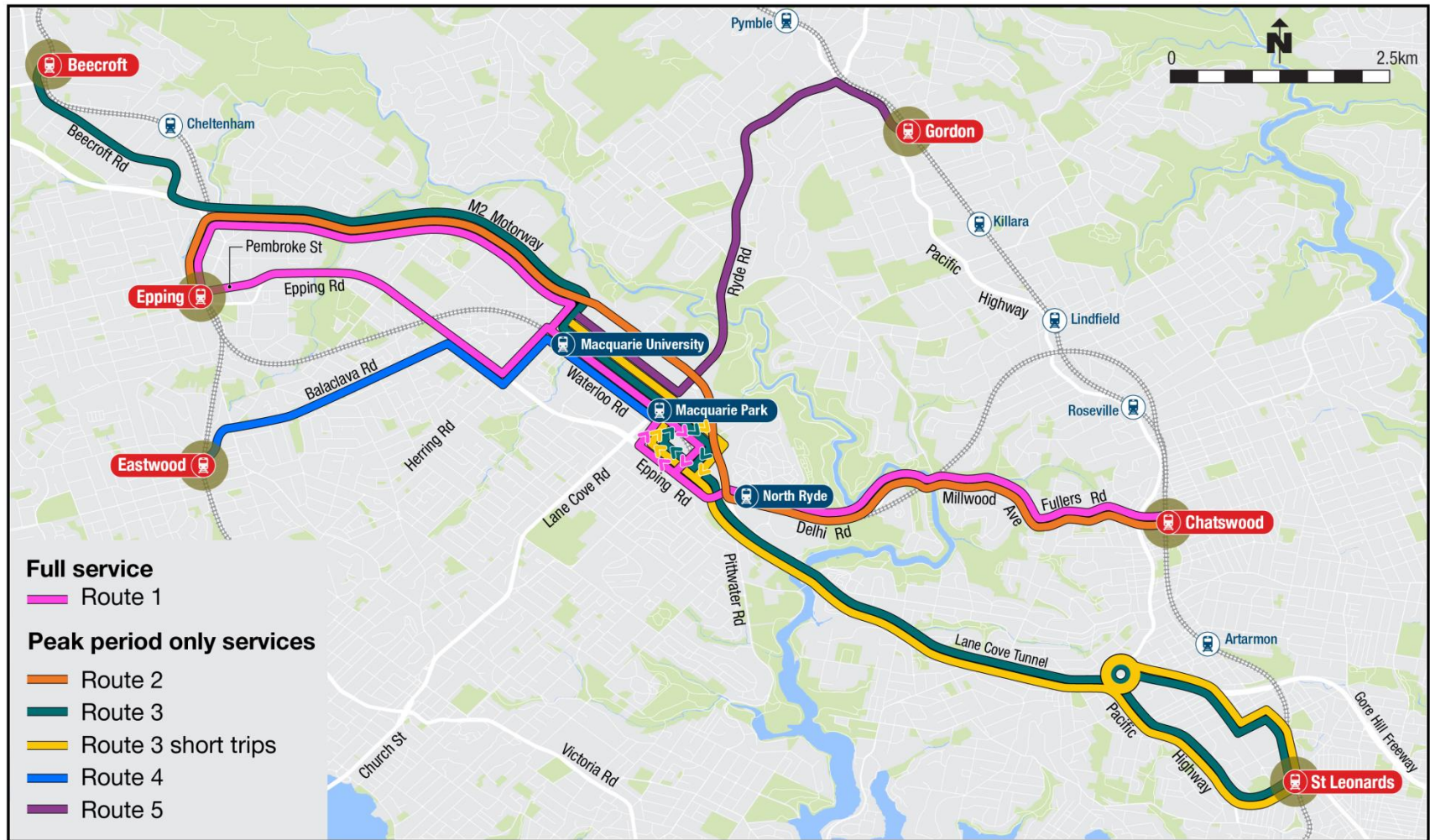
- Upgrading the Epping to Chatswood railway for new metro operations
- Rail track work including the removal and separation of rail signalling and power supplies
- New power systems
- Building modifications including the installation of platform screen doors, air control units and new lighting
- New rail operations including:
 - automatic train operation and protection
 - installation of more than 230 security cameras in the tunnels

Temporary closure of the Epping to Chatswood Railway for 6 to 7 months from late 2018

A temporary transport plan (rail replacement bus service) to maintain transport services

Exhibition of the Review of Environmental Factors occurred in 2014 with planning approval obtained in 2015

Temporary Transport - Peak Period Bus Routes



AM Peak: 6am to 10am

PM Peak: 3pm to 7pm

Route 1 services operate during all hours of rail operations

Transport for NSW – Further investigations for the long term transportation needs of Macquarie Park

Bus priority – support in principal

Behaviour change and travel demand – supported

Road network improvements in Macquarie Park Priority Precinct – supported

Ongoing bus service improvements – supported

Coordination of Temporary Transport Plan (TTP) with local bus services - supported

Stakeholder Engagement

2017 - Employers

- Refinement of Temporary Transport Plan (TTP) to enable forward planning
- Exploring travel demand initiatives
- Regular updates on broader TfNSW initiatives on improving transport in the Macquarie Park area
- Sydney Metro benefits

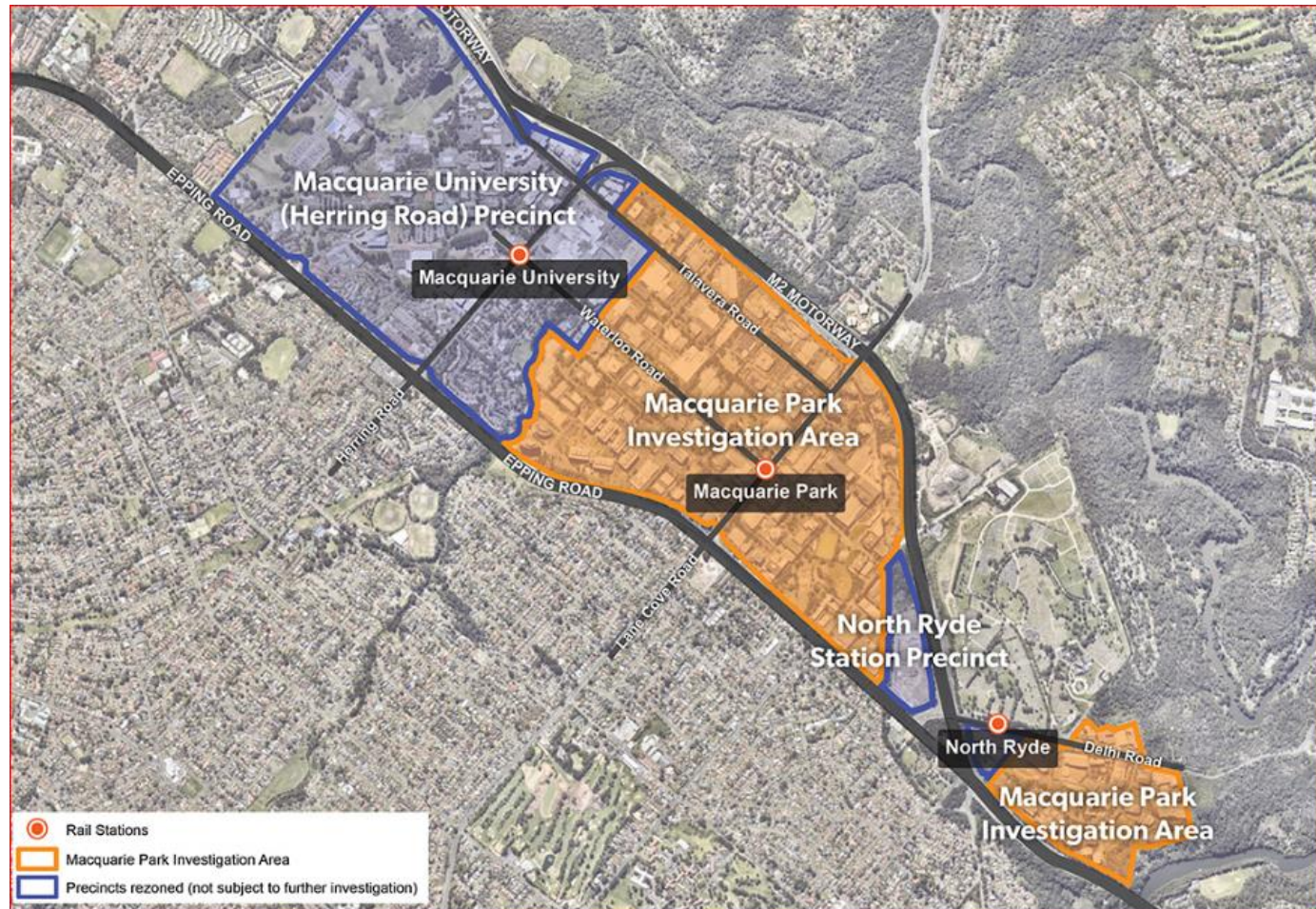
2018 – Customers and Community

- Temporary Transport Plan (TTP) information campaign
- Multi-channel approach to ensure maximum reach

Thank you



Strategic Review - Macquarie Park



Macquarie Park Investigation

Macquarie Park Forum

3 November 2016



What is the purpose of the investigation?

- To develop a vision and planning framework that transitions Macquarie Park from a business park to an activated employment centre.
- Principle objective of greater containment through place making.



What are we aiming to achieve?



A vibrant and enhanced commercial centre



Improved public domain and public spaces

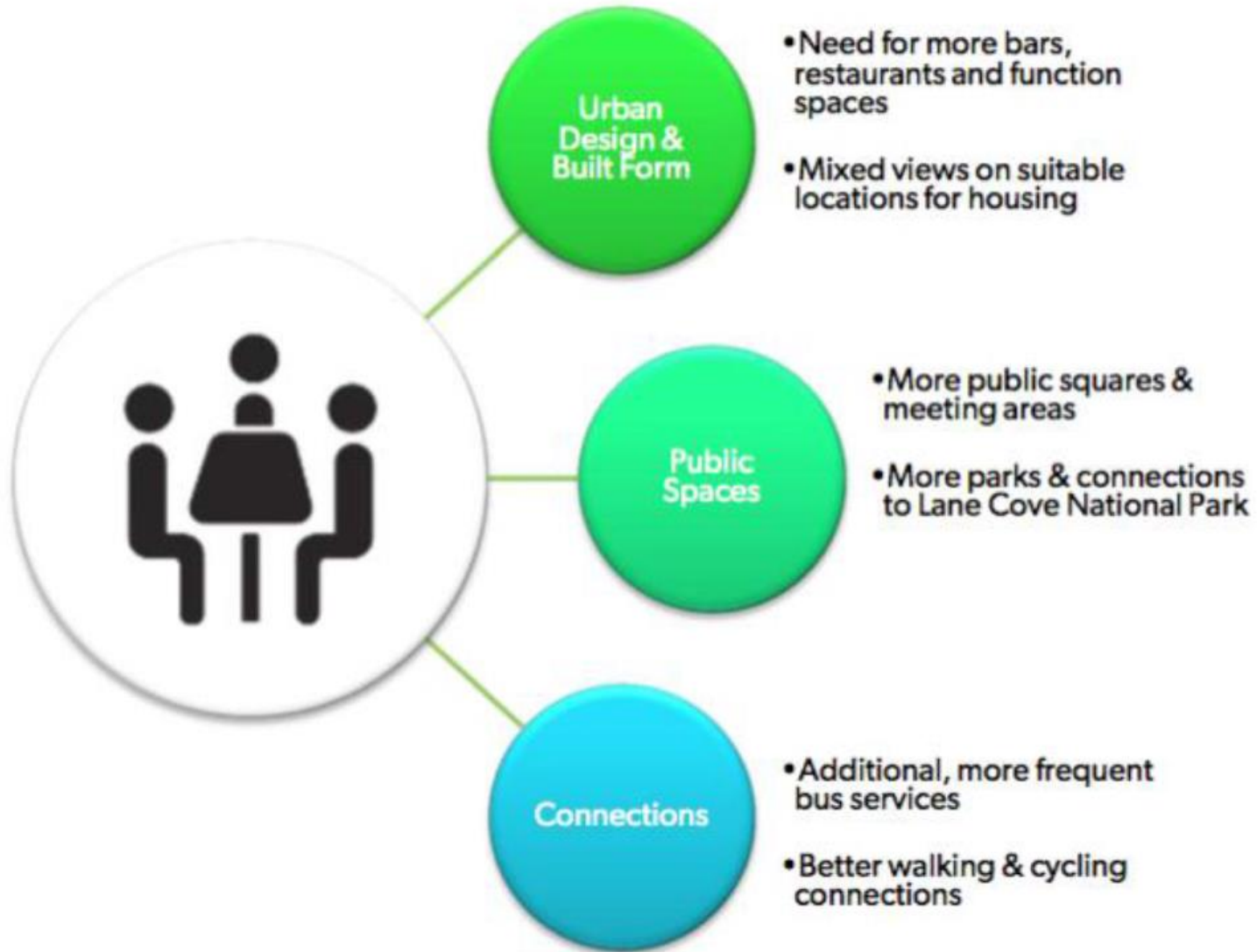


Greater mix of uses, including retail, civic and community uses

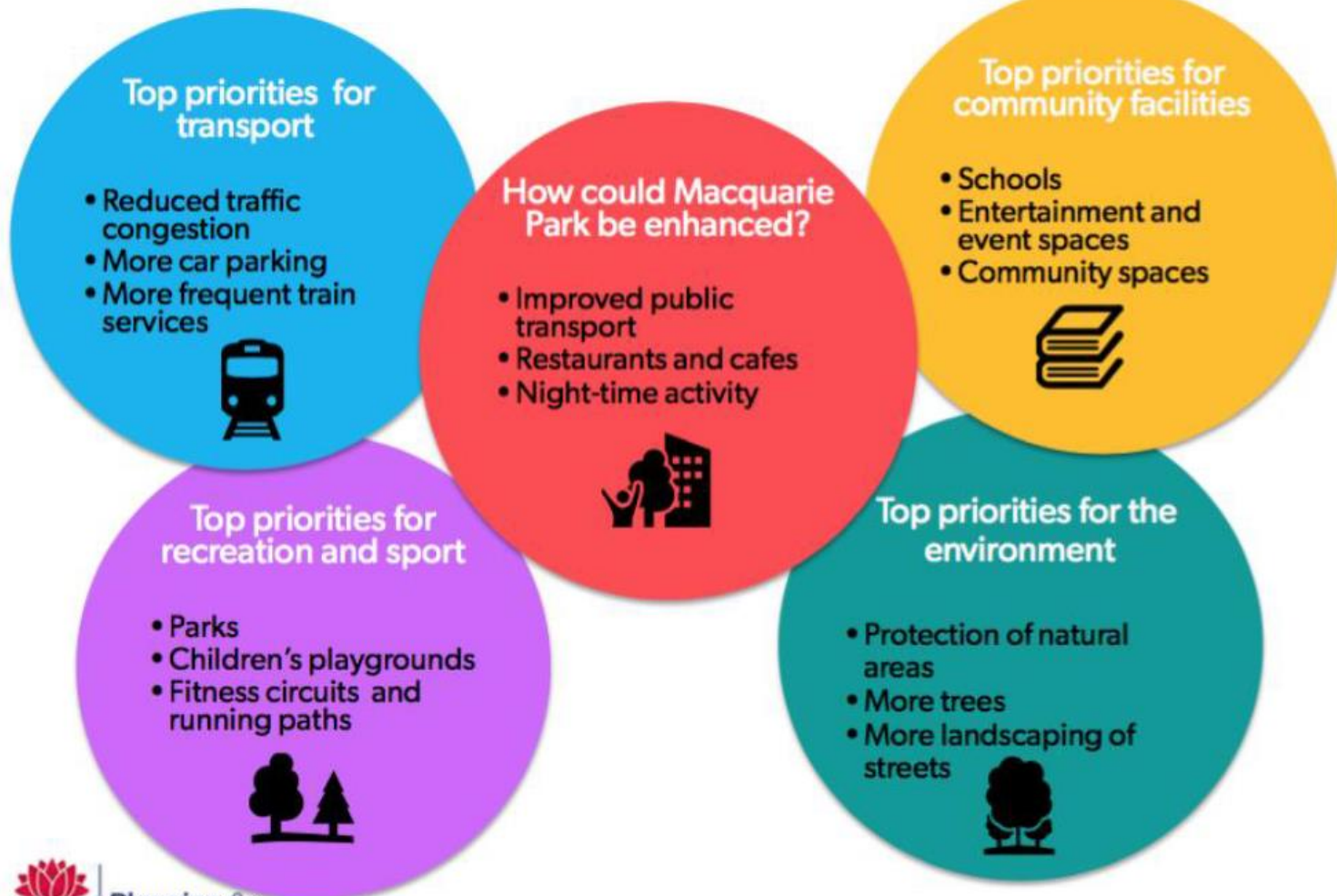


Better connections, including walking and cycling paths

Stakeholder Feedback - Employee Focus Group



Stakeholder Feedback - Online Survey



RBF, in conjunction with NSW Department of Planning & Environment, invites you to an essential breakfast about the future of Macquarie Park on Wednesday 23 November.

Upcoming Engagement



Join Minister for Innovation and Better Regulation and Member for Ryde the Hon Victor Dominello MP, NSW Chief Planner Gary White, Government Architect Peter Poulet and other leading minds for a lively panel discussion on the future of Macquarie Park as Australia's premier Innovation District.

Moderated by TV and radio presenter James O'Loughlin, this thought provoking breakfast event will give you a say about what makes Macquarie Park a great place to work – and what could make it even greater, such as better transport connections, improved public space and diversity of use.

WHEN	Wednesday 23 November 2016 Registration + networking 7.00am Breakfast 7.30am Event concludes 9.00am	COST	Ryde Business Forum members \$35 Non-members \$45 Corporate table of 8 \$280
WHERE	Macquarie Graduate School of Management 99 Talavera Road, Macquarie Park Parking onsite	RSVP	rydebusiness.com.au Enquiries to Marcella Letteri T: 9952 8948 E: rbfevents@rydebusiness.com.au

Next steps

**23
Nov**

Key Note Breakfast Event + Council Briefing

Dec

Release of Investigation Discussion Paper

**Early
2017**

Stage 1 Exhibition: Land Use and Infrastructure Strategy

**Thru
2017**

Stakeholder Consultation



Malcolm McDonald

Malcolm.mcdonald@planning.nsw.gov.au



Planning &
Environment

Macquarie Park Car Parking Review



Changes to off-street car parking rates were exhibited 21 September to 28 October 2016.

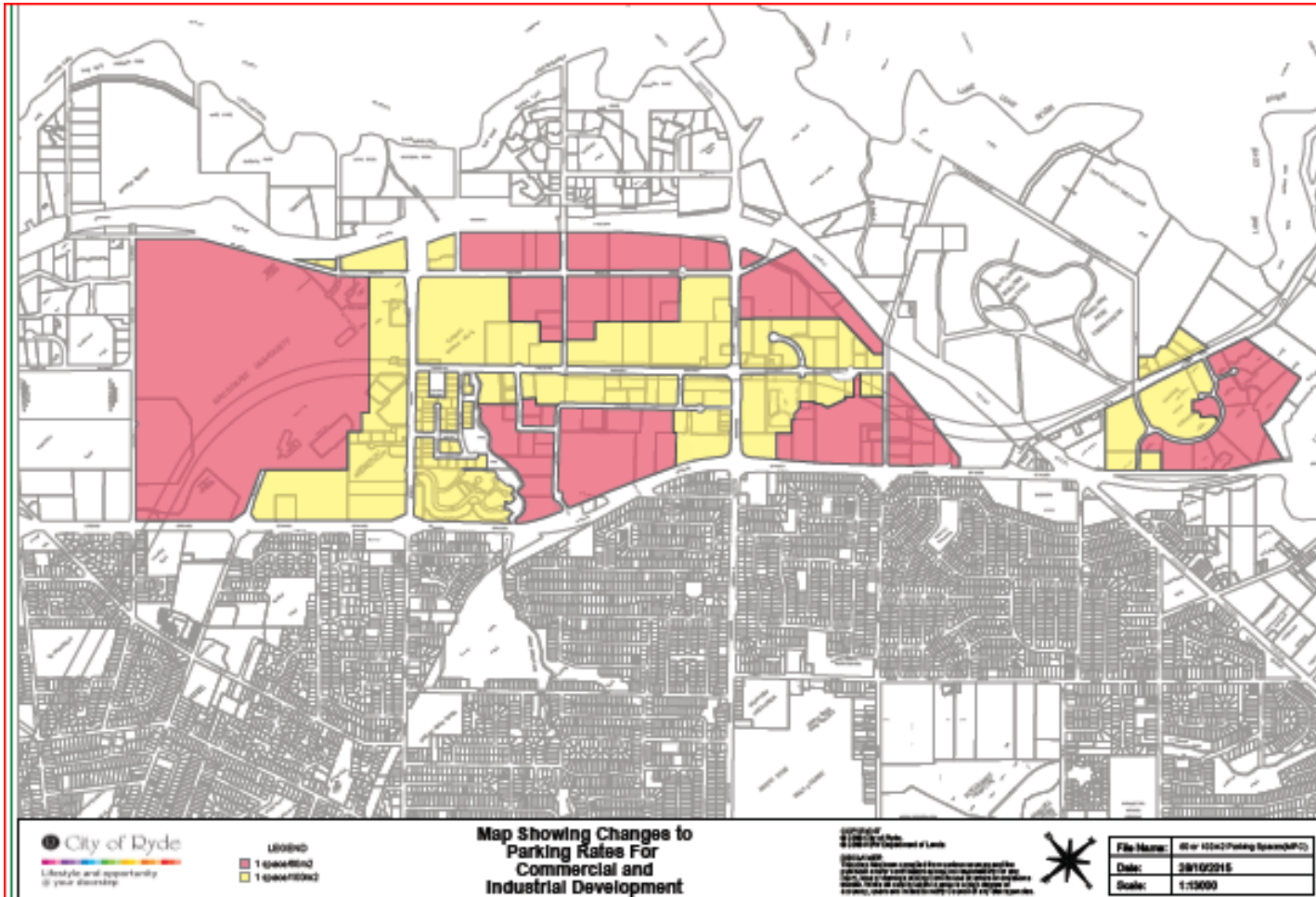
Key Changes:

- Moving car parking rates from the LEP to the DCP
- Reducing from three to two rates across the precinct (1/60 and 1/100)

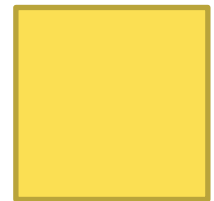
Next Steps

- Report to Council will be prepared (Feb 2016)
- DOP gazettes the changes

Proposed car parking rates



1/100



1/60



Night Time Economy Study

Community engagement during July – September 2016

- Ryde After 5 Have Your Say Page
- RydeAfter5 project postcards & posters
- Online survey (770 completed)
- Pop ups stalls (incl. Macquarie Park Optus Campus)
- Intercept surveying (incl. Macquarie University & train station)
- Social pin point & community map & ideas (189 comments)
- Consultation with committees & stakeholders



#RydeAfter5

Night Time Economy Study

Findings for Macquarie Park

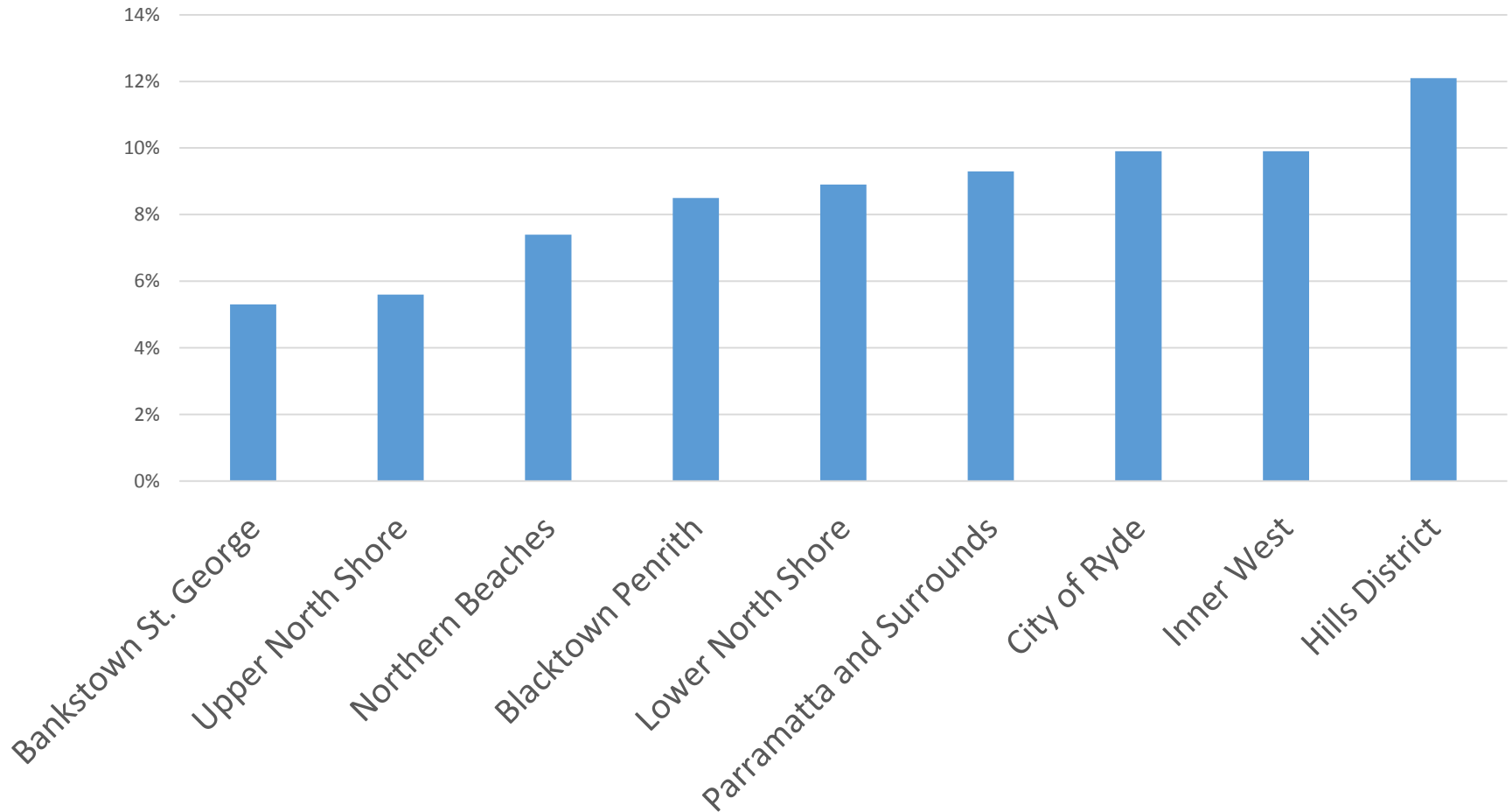
- **Visited** regularly at night by 54% of respondents
- Top **activities** – shopping, cinema, restaurants
- **Opportunities** – more restaurants, NTE hubs, venues that are not in Macquarie Centre, live music & cultural events, more safe & well lit public domain, public park
- **Challenges** – no street activity, NTE centralised in Macquarie Centre, limited public space
- 67% of respondents think it could be more activated at night



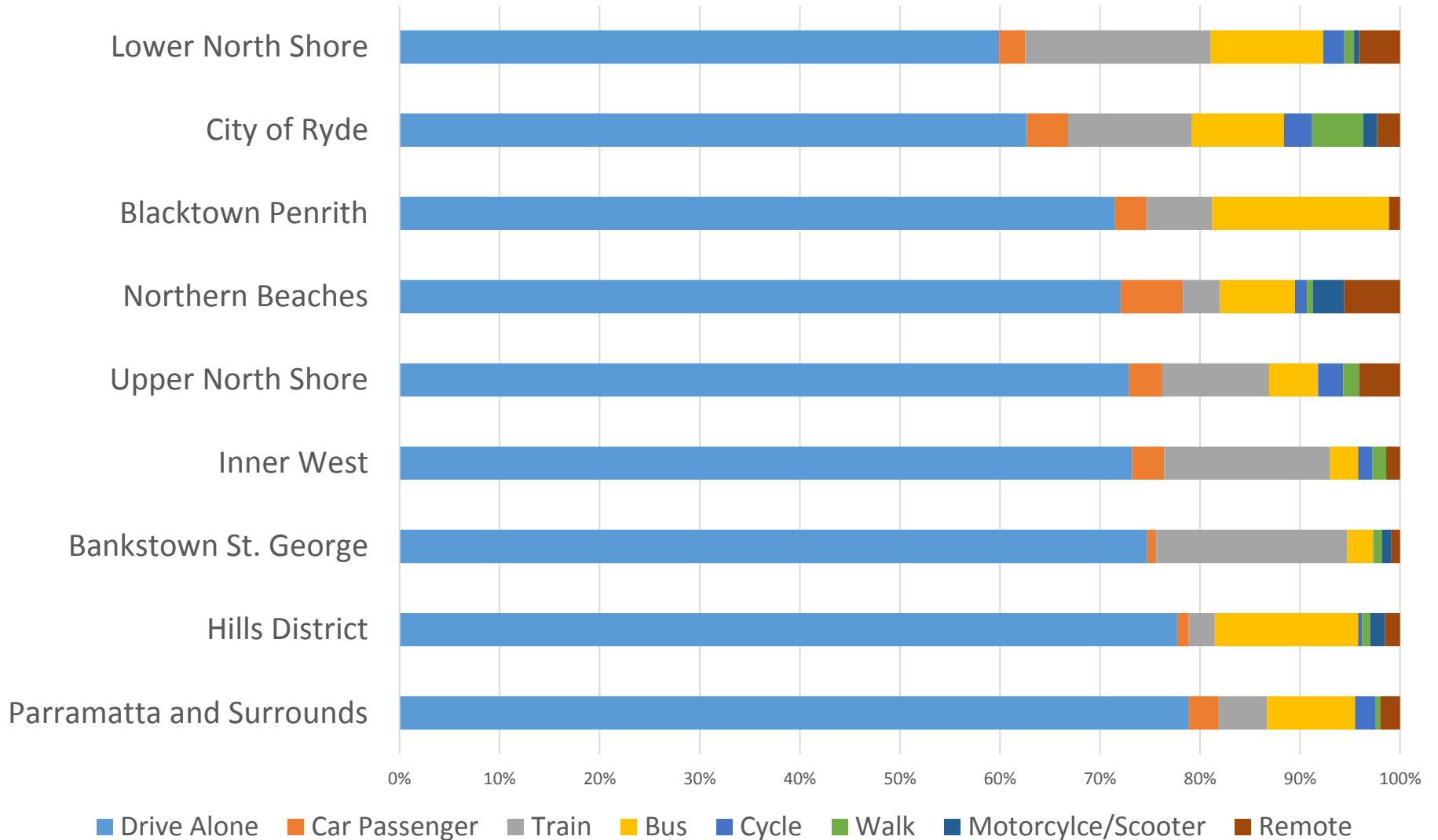
 **connect**
MACQUARIE PARK + NORTH RYDE
..... enjoy your ride

Macquarie Park
Forum
November 2016

Where do we come from...



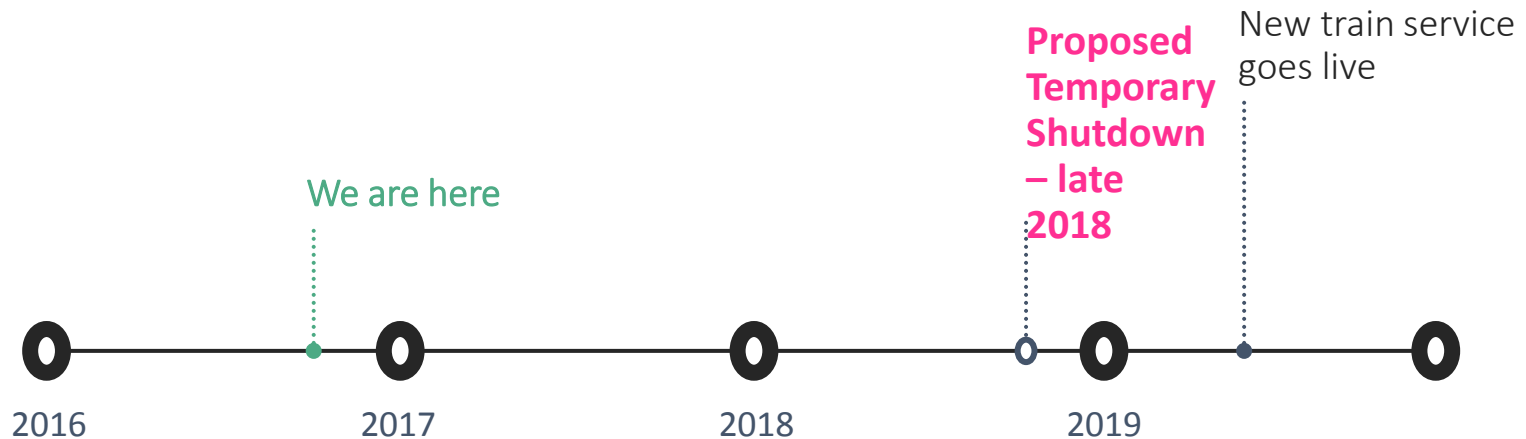
How did we get here...



Temporary rail shutdown

As the trusted adviser within the precinct, we will mitigate the travel disruption for Connect Members and the business community through the duration of Sydney Metro temporary

Timeline – Sydney Metro



Keeping TABs on 2018-19

Awareness

SS

2016-17 Campaigns include Co-Hop, Bus

and Flexiwork



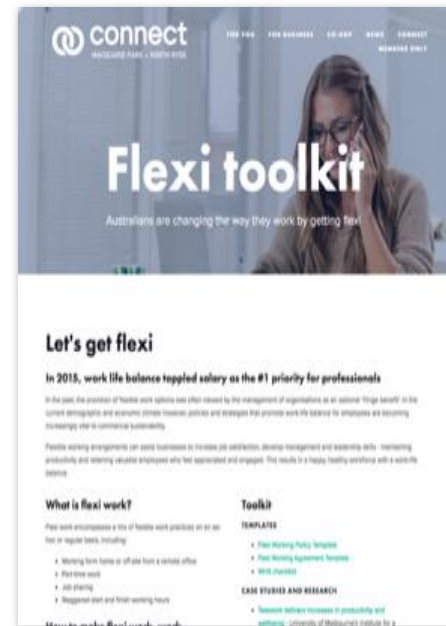
Remode

Don't drive-alone –
rideshare



Retime

Avoid the peak – use
travel apps to help
you plan



Reduce

Minimise travel - work from
home or other locations

Co-Hop and make a difference

3	8	1	7	6	KILOMETRES TRAVELLED
	6	0	8	3	DOLLARS SAVED
	7	7	4	6	KILOGRAMS GHG SAVED

Inform > Encourage change > Feedback > Ack

Co-Hop and make a difference

**HAPPIER
GREENER
CHEAPER
TRIPS TO WORK**


Make a difference with Co-Hop
ride share and improve everyone's
Macquarie Park commute.

@connect


Inform > Encourage change > Feedback > Ack

Co-Hop and make a difference

Log to win \$100 Macquarie voucher plus valet parking
by logging trips

Status: **Eligible** 

Qualifying Period Oct. 27 - Nov. 6, 2016 ♦ Deadline Nov. 6, 2016 ♦ Entries Made 0 (no max)



Log to win \$100
Macquarie voucher plus
valet parking

[Read More...](#)

Enter Contest!





Points Required **1**


Points Available **8**

Next Step *You are eligible*
to make 8 entries.

How to Earn Points



Calendar Entries 



Commuter Business Personal

User Activity

[View Details](#)

 **Connect Mac Park** shared an offer.
October 31 at 6:48am · 

Does your commute to work feel like an irritating waste of time? Try Co-Hop ride-share. Meet new friends, win prizes, save on petrol and parking costs while helping to save the planet and reduce congestion – all before you start work.



**HAPPIER
GREENER
CHEAPER
TRIPS TO WORK**

Make a difference with Co-Hop ride share and improve everyone's Macquarie Park commute.

Win up \$200 in Macquarie Centre vouchers ever week
Expires in 4 days

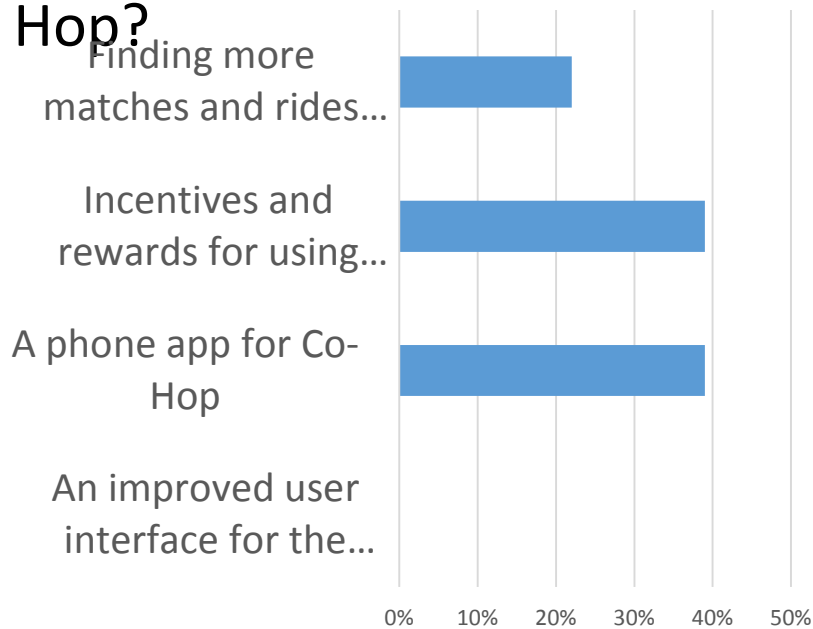
24 PEOPLE GOT THIS OFFER [Use Offer](#)

Inform > Encourage change > Feedback > Ack

Co-Hop and make a difference



What would be the best improvement for Co-Hop?



Inform > Encourage change > Feedback > Ack

Smarter transport

Join the conversation
today #zarapresents

www.connectmacpark.com

FOXTEL



BOC
A Member of The Linde Group

ARISTOCRAT



City of Ryde
Lifestyle and opportunity @ your doorstep

NOVARTIS



hunt & hunt
lawyers

MACQUARIE
University



NSW
GOVERNMENT | Transport
for NSW

AMPCAPITAL



OPTUS

Schneider
Electric

connect

General Business

- Next Meeting ... 18 February 2016