

# Macquarie Park Forum

16 February 2017



## Sky Train Viaduct Update





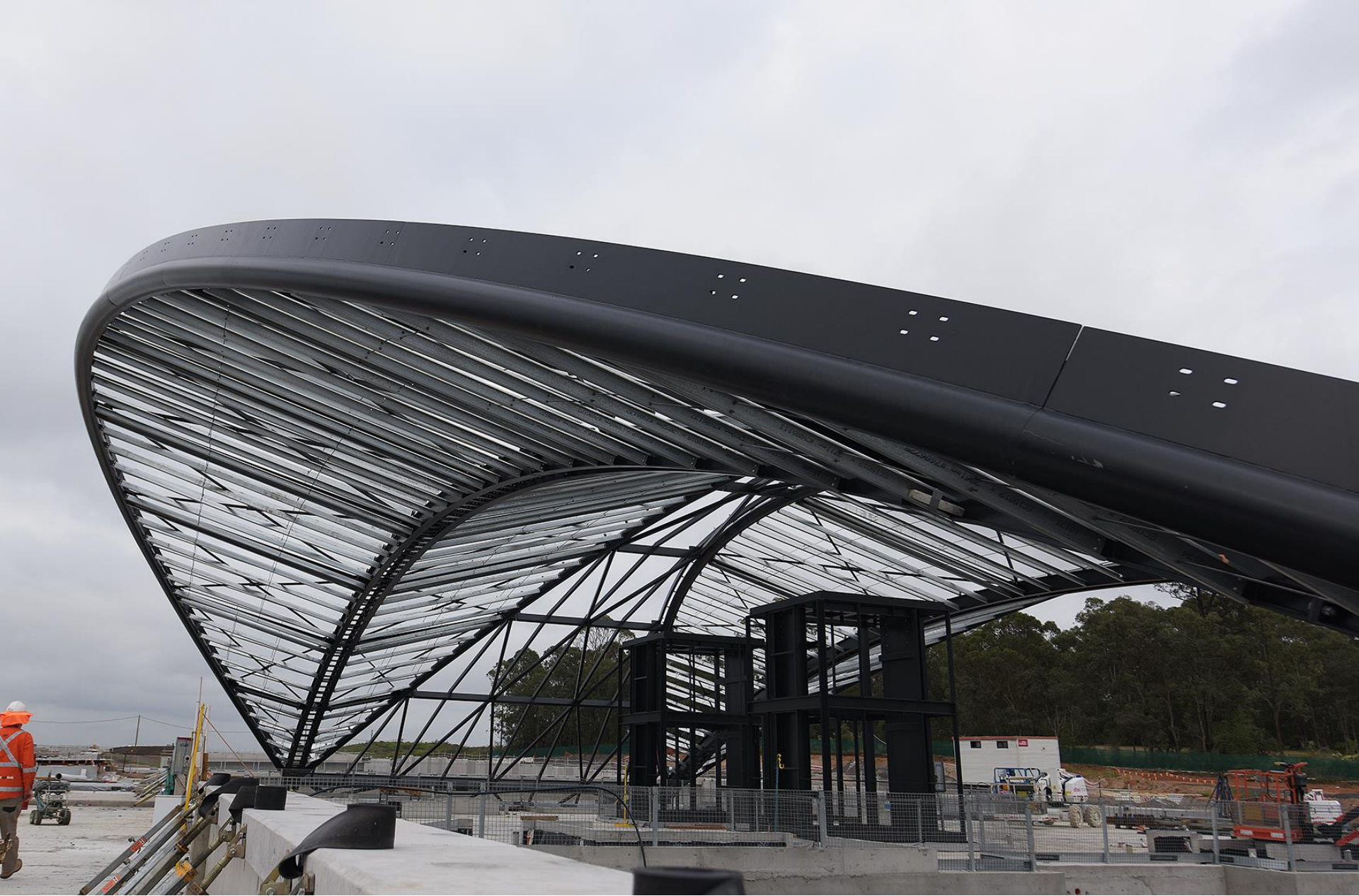
Sydney Metro Trains Facility (SMTF)





Approach to Cudgegong Road Station





## Cudgegong Road Station



Bella Vista Station





## Norwest Station

# Macquarie Park Access Plan - Actions

Action	Time frame
Work closely with Stakeholders including RCC, Connect, Businesses, Macquarie Centre, and Macquarie University	Underway
Establish a Macquarie Park Coordination taskforce to manage and monitor traffic and transport matters	Q1 2017
Collate data to understand travel demand (including previous studies)	Q1 2017
Identify current constraints of traffic and transport network	Q1 2017
Develop detailed action list	Q1 2017
Draft Macquarie Park Access Plan	Q2 2017
Action	Time frame
Regular Bus Service Plan (Non TTP)	Ongoing
Epping to Chatswood Temporary Transport Plan	2018/19



# Precinct Considerations

Bus Priority  
Infrastructure  
Program

Sydney Metro  
Temporary Travel  
Plan

Priority Growth  
Areas

Road Network  
Performance /  
Parking

DA's and  
Construction

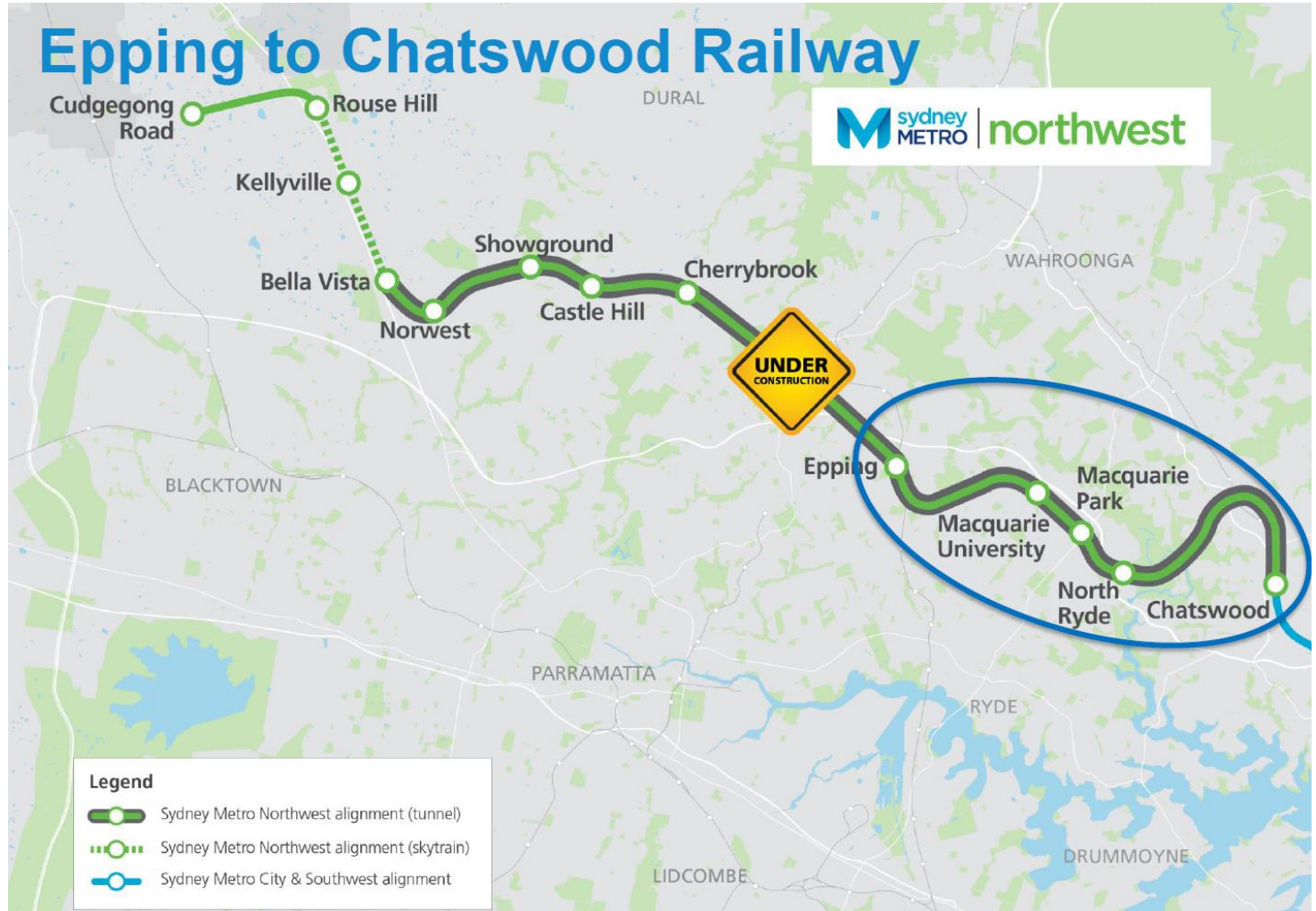
Travel Demand  
Management and  
Macquarie Park  
Connect

Freight and  
Servicing

Bus Service  
Planning

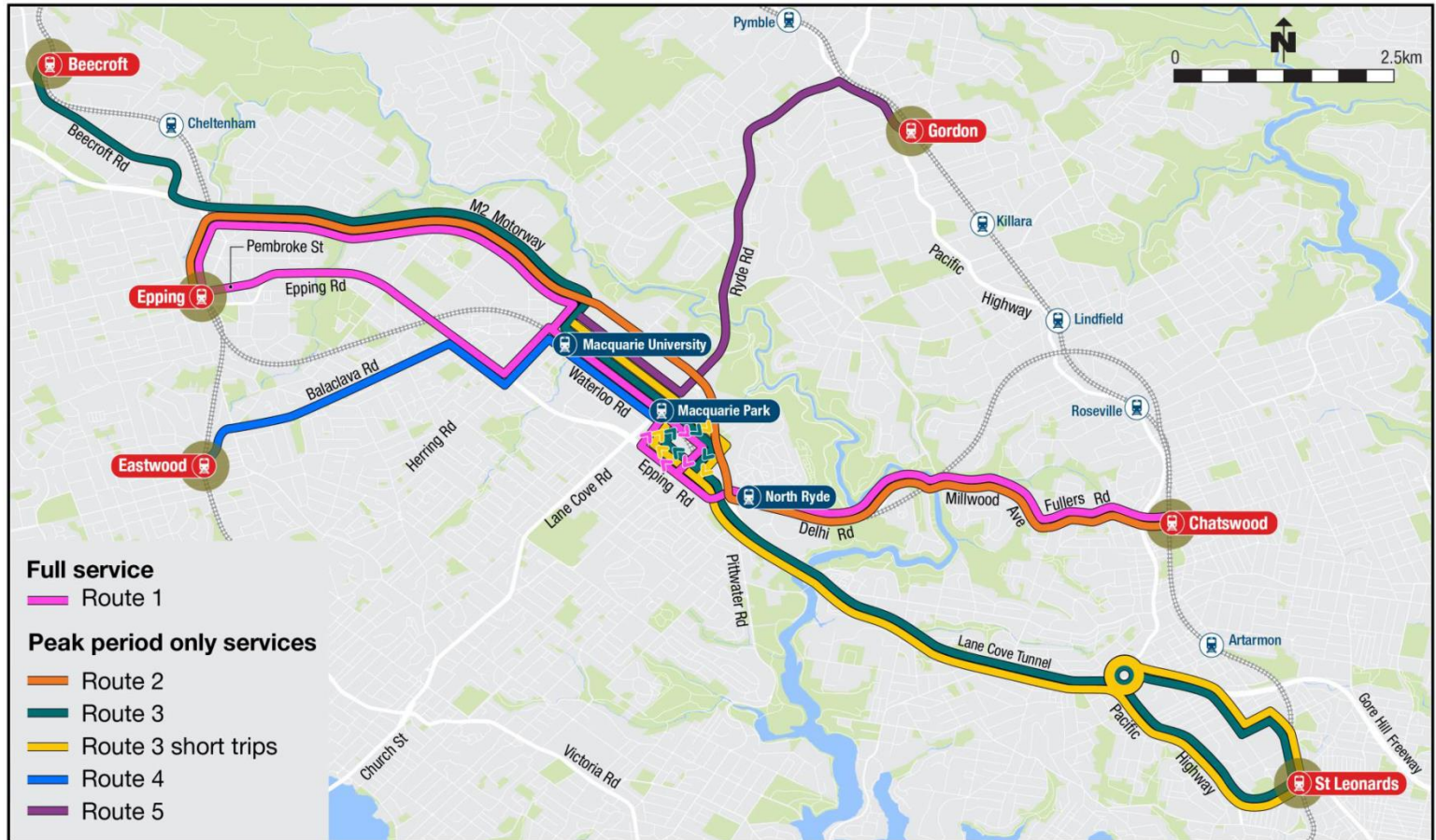
Sydney Metro

# Sydney Metro Temporary Travel Plan





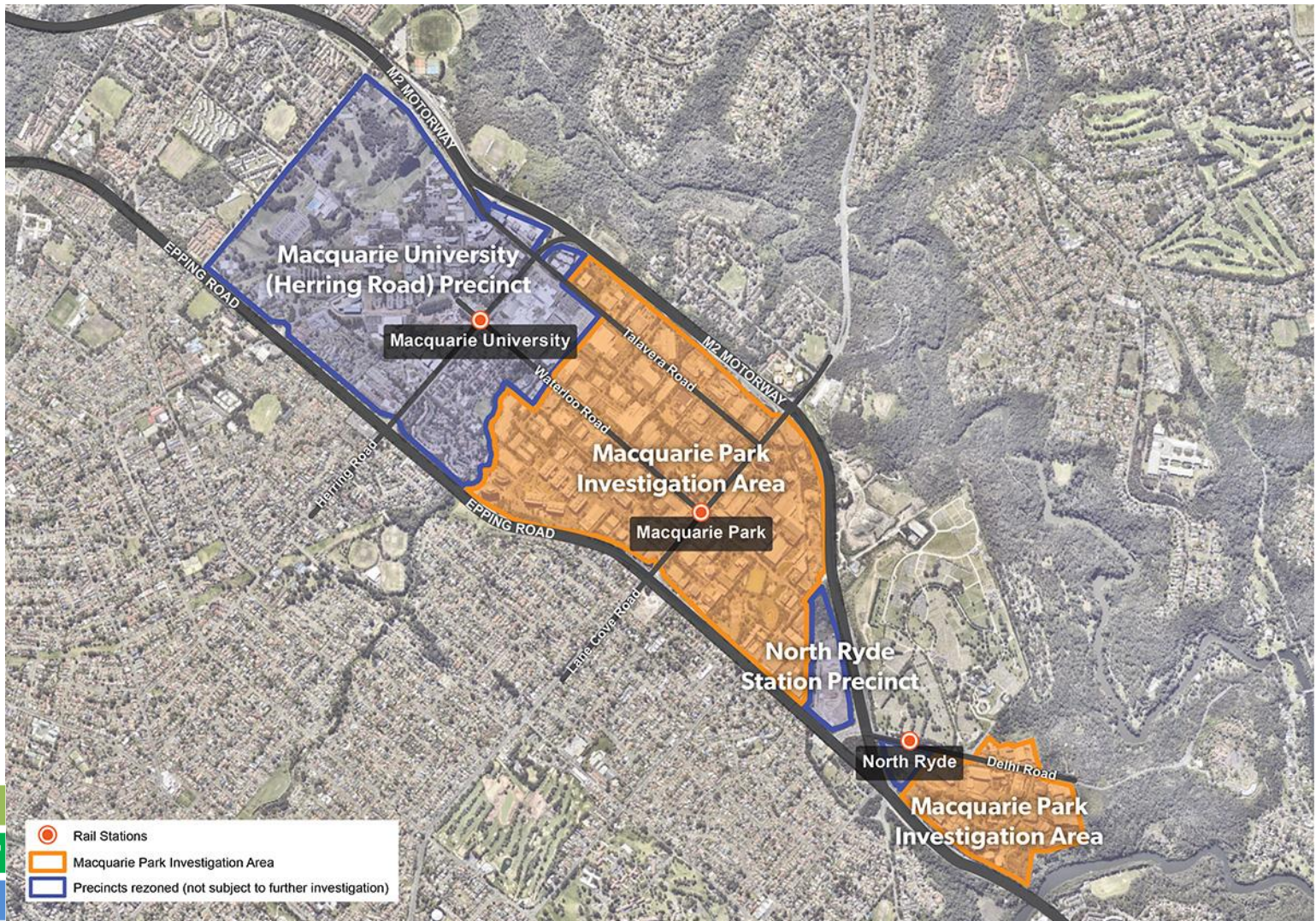
# Sydney Metro Temporary Travel Plan



Bus Priority Infrastructure Program	Sydney Metro Temporary Travel Plan	Priority Growth Areas
Road Network Performance	DA's and Construction	Travel Demand Management and Macquarie Park Connect
Freight and Servicing	Bus Service Planning	Sydney Metro

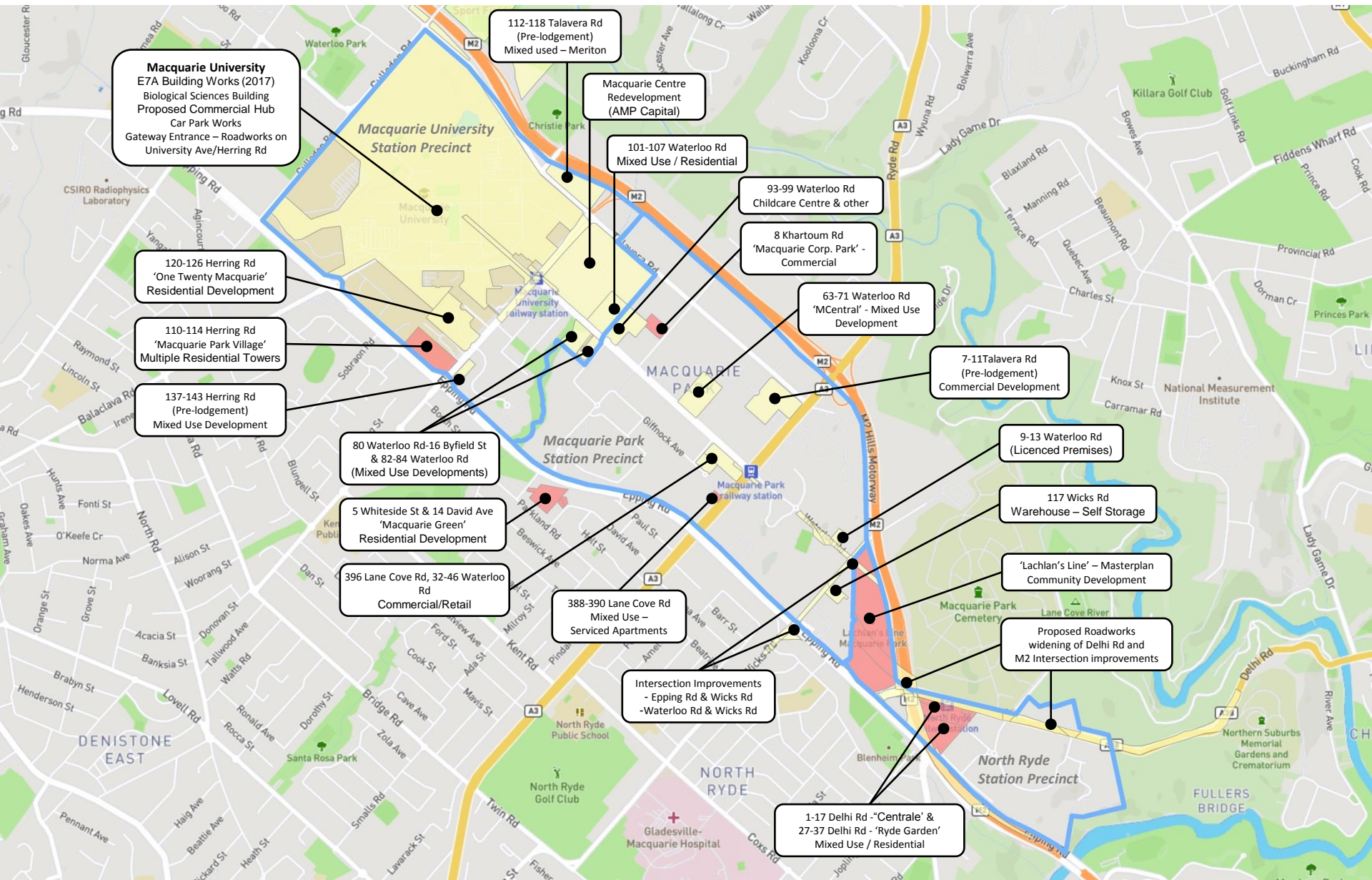


# Priority Growth Areas





# DA's and Construction



# Bus Service Planning

- Buses from across Sydney service the Macquarie Park area, including from the Lower North Shore, Inner West, Northern Beaches, Western Sydney and North West Sydney
- Around 1,400 extra weekly bus services have been implemented since 2011 to improve access to Macquarie Park, responding to customer demand and growth in the area
- 2016/17 Growth Services Program includes improvements to Routes M41 (Hurstville), 197 (Mona Vale), 292 (Marsfield), 506 (East Ryde), 518 (Top Ryde), 611 (Blacktown), 619 & 621 (Castle Hill) and 740 (Stanhope Gardens)





