



Macquarie Park Forum

TfNSW Update

March 2018

Sydney Coordination Office

Coordinates:

- Operational planning: traffic management and contingency planning
- Strategic and land use planning
- Communication of traffic and transport changes
- Freight planning for deliveries and servicing
- Business and community support
- Travel Demand Management



Precinct Considerations

Bus Priority and
Capacity
Improvements

ECRL Temporary
Transport Plan

Priority Growth
Areas

DA's and
Construction

Travel Demand
Management and
Connect Macquarie
Park + North Ryde

Freight and
Servicing

Road Network
Performance

Bus Service
Planning

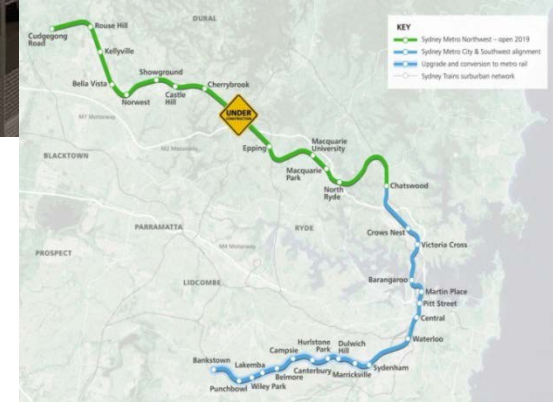
Sydney Metro

Action Plan

Manage and monitor the network	Work with stakeholders
Deliver infrastructure	Deliver services

Epping to Chatswood rail line closure

- Upgrade the Epping to Chatswood railway for new metro operations
- Rail track work including the removal and separation of rail signalling and power supplies
- Building modifications including installation of platform screen doors, air control units and new lighting
- New rail operations including:
 - automatic train operation and protection
 - installation of security cameras in the tunnels
- 6-7 months closure to carry out works for metro
- REF completed in 2014 and received planning approval in February 2015



Temporary Transport Plan

- 124 new low floor accessible buses, opal enabled and fully air conditioned
- Audio-visual screens (next stop information) and hearing loops
- Standard train fare on all Epping to Chatswood TTP bus services (includes 30% off-peak and Opal Transfer discount for transfers between modes)
- High frequency, turn up and go service
- Road and intersection upgrades, including bus priority measures to support the TTP and improve reliability



Wednesday, 5 July 2017

***Images and animation available below*

THOUSANDS OF EXTRA BUS SERVICES SUPPORT METRO BUILD

A \$49 million investment in more than 120 new buses, extra routes and thousands of added bus services will keep customers moving during the upgrade of the Epping to Chatswood line in late 2018 ahead of the start of Sydney Metro.

Minister for Transport and Infrastructure Andrew Constance said the rail upgrade would deliver a train every four minutes as part of Sydney Metro – Australia's biggest public transport project.

During the upgrade, customers will be able to catch seven new bus routes that will connect customers to impacted stations at least every six minutes at peak times, including a dedicated shuttle service to Macquarie University.

"We're on track for Sydney Metro Northwest, which will deliver reliable turn-up-and-go train services to North West customers when it opens in the first half of 2019," Mr Constance said.

"We're boosting bus services in and around the train stations from Epping to Chatswood to ensure customers can easily travel to the shops, work, study, and back home reliably and safely.

"This includes more than 30 buses in the morning peak hour from Epping to the Macquarie Park precinct and Chatswood in the peak."

Member for Ryde Victor Dominello said delivering extra services for the booming Macquarie Park district was vital during the upgrade to Metro.

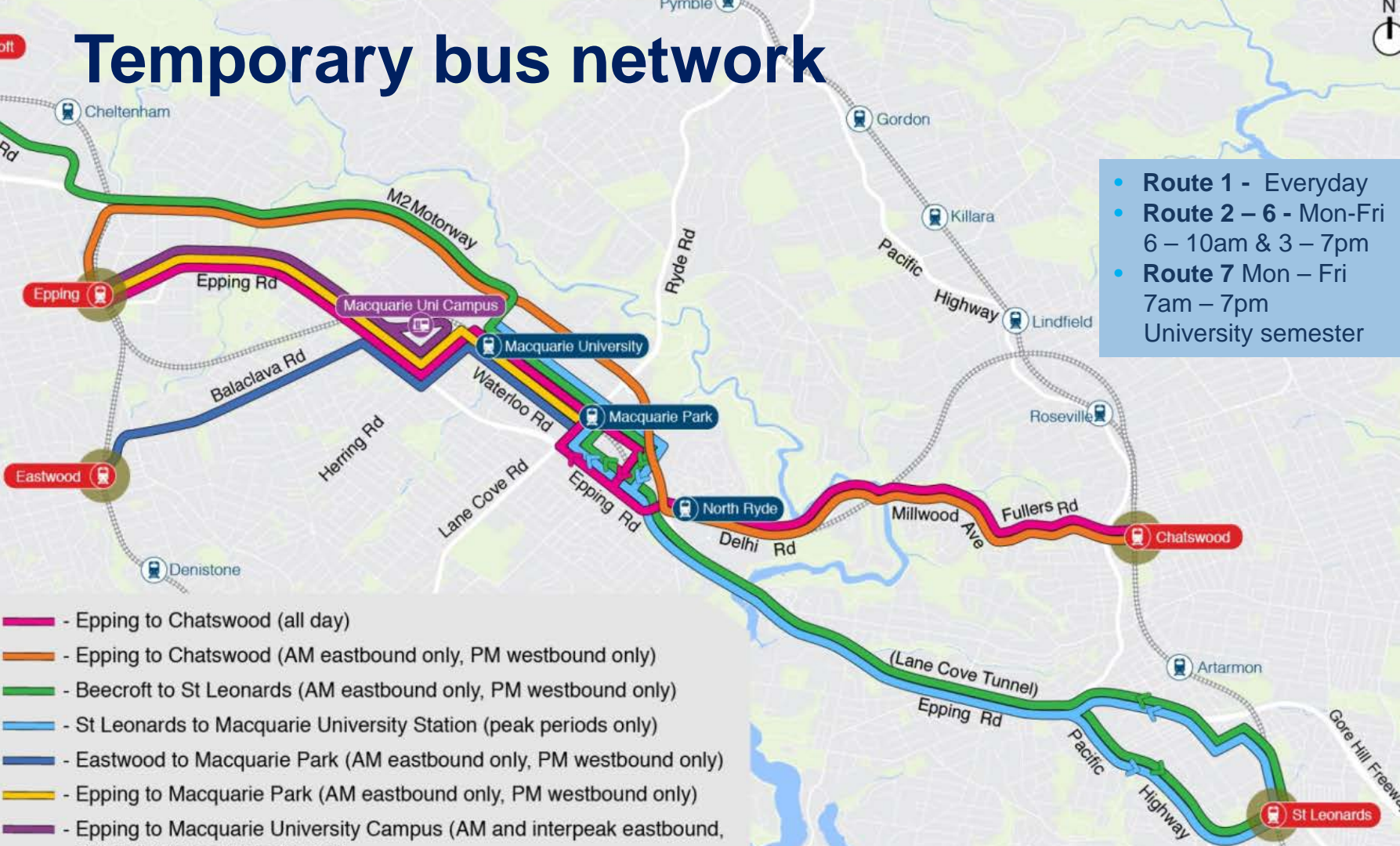
"Macquarie Park is a critical area not just for the people of Ryde but the economic strength for the people of NSW. It is essential that we deliver the infrastructure required to provide public transport for this area," Mr Dominello said.

Member for Epping Damien Tudehope said Sydney Metro is the most important piece of infrastructure for the future of Sydney's North West.

"The government is committed to minimising disruptions to commuters, and I welcome the announcement today of an investment in 120 new, additional buses while this essential project is delivered," Mr Tudehope said.

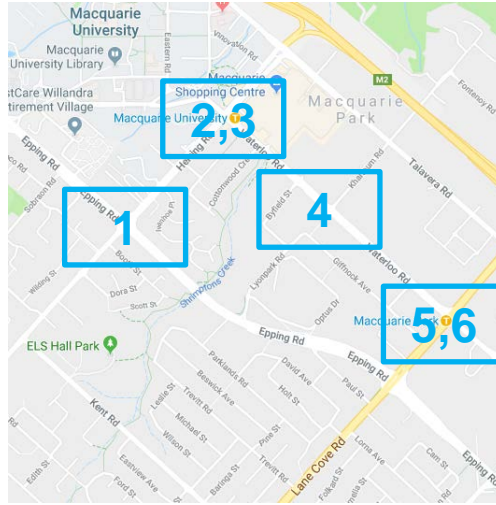
Temporary bus network

- **Route 1** - Everyday
- **Route 2 – 6** - Mon-Fri 6 – 10am & 3 – 7pm
- **Route 7** Mon – Fri 7am – 7pm University semester



- Route 1 - Epping to Chatswood (all day)
- Route 2 - Epping to Chatswood (AM eastbound only, PM westbound only)
- Route 3 - Beecroft to St Leonards (AM eastbound only, PM westbound only)
- Route 4 - St Leonards to Macquarie University Station (peak periods only)
- Route 5 - Eastwood to Macquarie Park (AM eastbound only, PM westbound only)
- Route 6 - Epping to Macquarie Park (AM eastbound only, PM westbound only)
- Route 7 - Epping to Macquarie University Campus (AM and interpeak eastbound)

Bus Priority Infrastructure Program: Stage 1



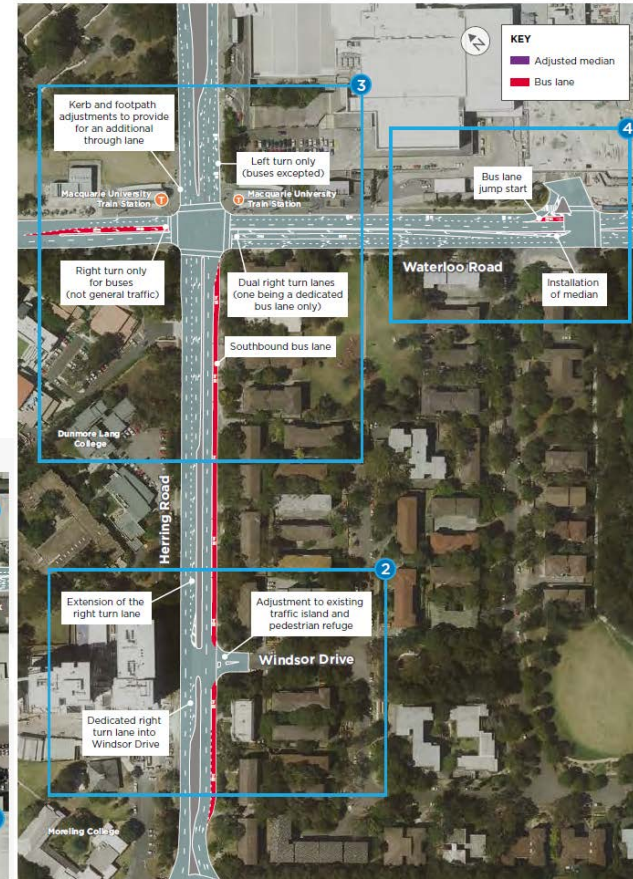
Herring Road and Epping Road



Waterloo Road and Lane Cove Road



Herring Road and Waterloo Road



Bus Service Planning

- Buses from the Lower North Shore, Inner West, Northern Beaches, Western Sydney and North West Sydney service the Macquarie Park area
- Around 1,400 extra weekly bus services have been implemented since 2011
- More buses added in 2016/17. Growth Services Program includes improvements across Hurstville, Mona Vale, Marsfield, East Ryde, Top Ryde, Blacktown, Castle Hill and Stanhope Gardens

Recently announced

- From 1 March 2018 New NightRide (N91) services will operate between Macquarie Park and Bondi Junction



Sydney Metro

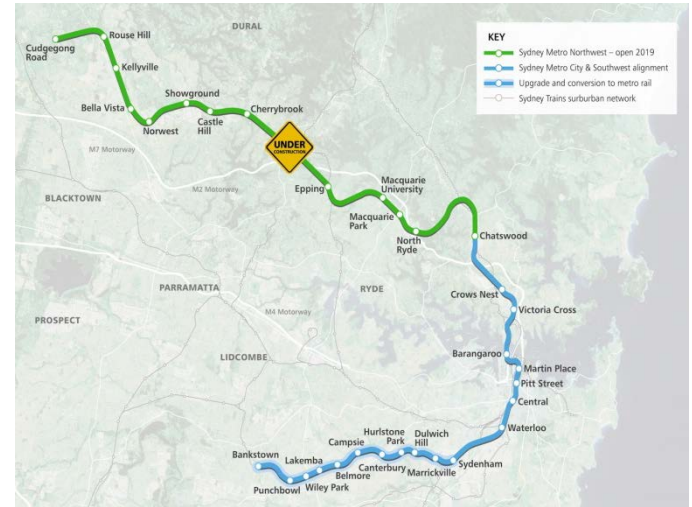
- Biggest public transport project, delivering 31 metro stations and over 66 kilometres of new metro rail
- Will provide a generation of world class, fast, safe and reliable trains with a turn up and go service

Stage 1: Sydney Metro Northwest

- \$83 billion project opens in the first half of 2019
- Metro train every four minutes in the peak
- Includes eight new metro stations & five upgraded stations

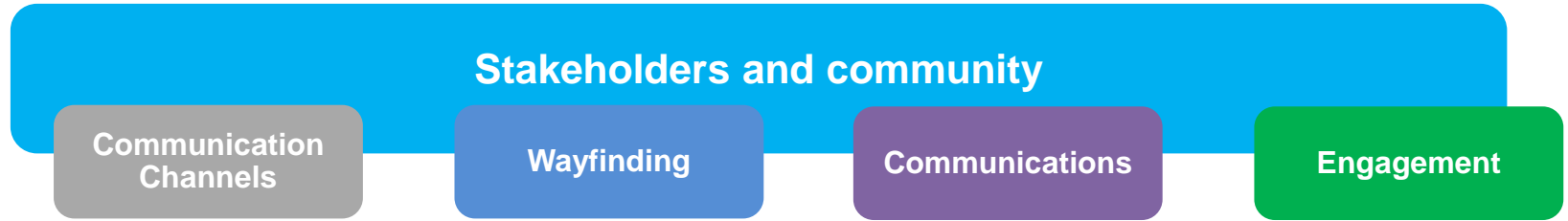
Stage 2: Sydney Metro City and Southwest

- 30 km extension from Chatswood, under Sydney Harbour, through new CBD stations and south west to Bankstown
- Opening in 2024 with seven new metro stations and eleven upgraded stations.





Communications & engagement approach



Keeping Macquarie Park moving



What is Travel Choices

- Travel Choices is a FREE resource.
- Established to help individuals, businesses and organisations manage impacts of construction in Sydney.
- Empower commuters to make informed travel choices.
- Shapes long term, sustainable travel behaviour, aligned to future workplaces.



Travel Choices is coming to Macquarie Park this year!



Use the disruption as a catalyst to shape long term sustainable travel behaviour

Support your organisation and your staff to adapt to the transport changes and keep Macquarie Park moving

Partner with organisations in Macquarie Park and North Ryde